

# SIGNATURE PARK

The pinnacle of nature that only a large complex can embrace

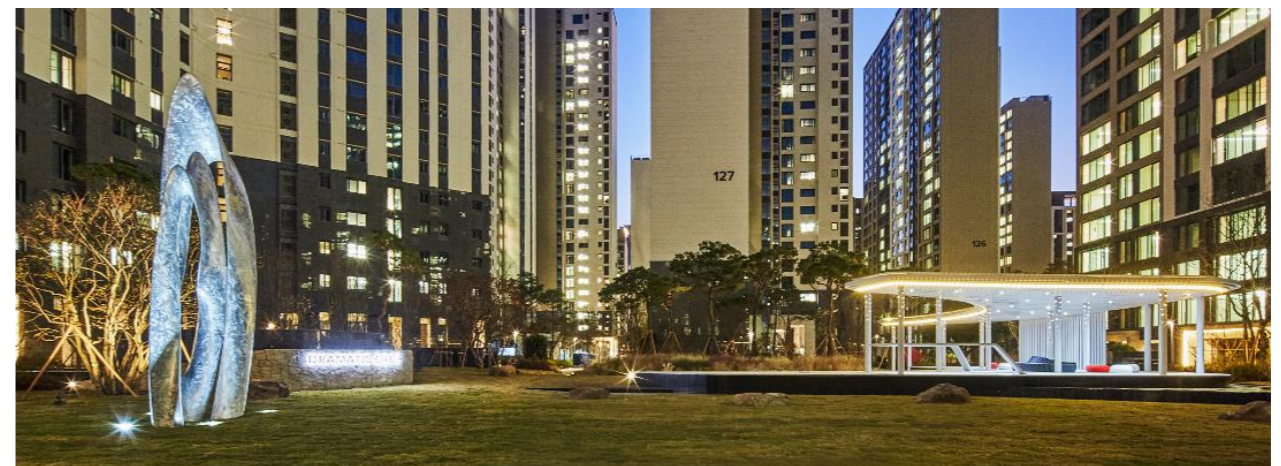


THE H FIRSTIER IPARK

## Project Statement

THE H FIRSTIER IPARK is an apartment complex adjacent to Daemo-san and Guryong-san, featuring a landscaping plan that considers ecological connectivity. It is a large-scale complex spanning 150,000m<sup>2</sup>, incorporating unique spaces and programs throughout the site.

Reflecting its prestigious status, THE H FIRSTIER IPARK has created two large-scale signature parks and five themed gardens. The signature parks blend water features, art works, community facilities like the IPARK Lounge and Pavilion, and artist gardens, promoting resident cohesion and continuous maintenance through gardening classes. The five themed gardens offer diverse seasonal experiences and support community activities of varying scales across the entire complex. Additionally, the seven playgrounds, each with unique themes and designs, incorporate landscape-oriented staging to harmonize with the surroundings, offering varied and engaging play experiences. The community fitness facilities cater to diverse age groups within the complex, ensuring comfort and accessibility for families, seniors, and children alike.



# Project Narrative & Statement

# Built Categories : Social and Community Health

# Location : block1, 310, Gaepo-ro, Gangnam-gu, Seoul, Korea

# Area : 145,842m<sup>2</sup> (block 1)

# Site condition

Gaepo-dong was developed in the 1960s as a large-scale development project to address Seoul's housing shortage, and most complexes were built as small apartments under five stories high. To accommodate many households, these areas were densely packed with uniform structures, ignoring cultural, geographical, and ecological contexts. In particular, THE H FIRSTIER IPARK stands as the largest complex in Gaepo-dong, and as time passed, buildings aged, and external spaces deteriorated, reconstruction began in the Gaepo-dong area in 2016. Presently, there's a continuous transition towards an environmentally friendly and upscale new residential environment.

# Design intent & program

THE H FIRSTIER IPARK is an apartment complex spanning 150,000m<sup>2</sup>, featuring two large-scale signature parks and five themed gardens. Additionally, it boasts seven playgrounds, each with unique themes and designs, incorporating landscape-oriented staging to harmonize with the surroundings, offering varied and engaging play experiences. The community fitness facilities cater to diverse age groups within the complex, ensuring comfort and accessibility for families, seniors, and children alike.

WONDERFUL MEADOW, one of the 2 SIGNATURE PARKS, features graceful curved water features and cascades framing the entire space, while large trees such as pine, East Asian hackberry, and sweet osmanthus create a rich backdrop. In addition, impactful artworks complement the space, presenting an impressive landscape. The oval IPARK Lounge, in harmony with this environment, serves as a shared lounge contributing to resident communication and community activation. It was designed with a stylish interior to reflect residents' pride and to facilitate community events tailored to different purposes without inconvenience, incorporating basic infrastructure such as heating, cooling, and sinks.

The Dramatic Circle is the second signature space designed in a circular form, where the IPARK Pavilion, resembling an objet d'art, and water features complement each other, defining the space's framework. Luxurious textures and forms of beautiful artworks add elegance to the entire field. Within the IPARK Pavilion, designer furniture is arranged to offer a sophisticated and leisurely focal landscape. Collaborating with garden artists, an oval-shaped garden was created, blending with the Pavilion, showcasing beautiful transformations throughout the four seasons, and presenting a uniquely beautiful landscape even at night.

The creation of 5 THEME GARDENS—Wild Canyon, Urban Garden, Boutique Garden, Welcome Forest, and Slow Garden—across the complex, each with a different landscape, provides residents with diverse seasonal experiences and supports community activities of varying scales.

# Collaboration / Resident Community

Through collaboration with garden designer, we have created artist gardens in various locations within the resident complex such as the Dramatic Circle, Urban Garden, and Wonderful Meadow. Additionally, by hosting gardening classes for residents in these artist gardens, we provide educational opportunities for those who have a passion for gardening and plants among the residents. It is expected that the community formed among them will serve as a driving force for maintaining the quality of the gardens within the resident complex continuously.

# Eco-friendly resident complex

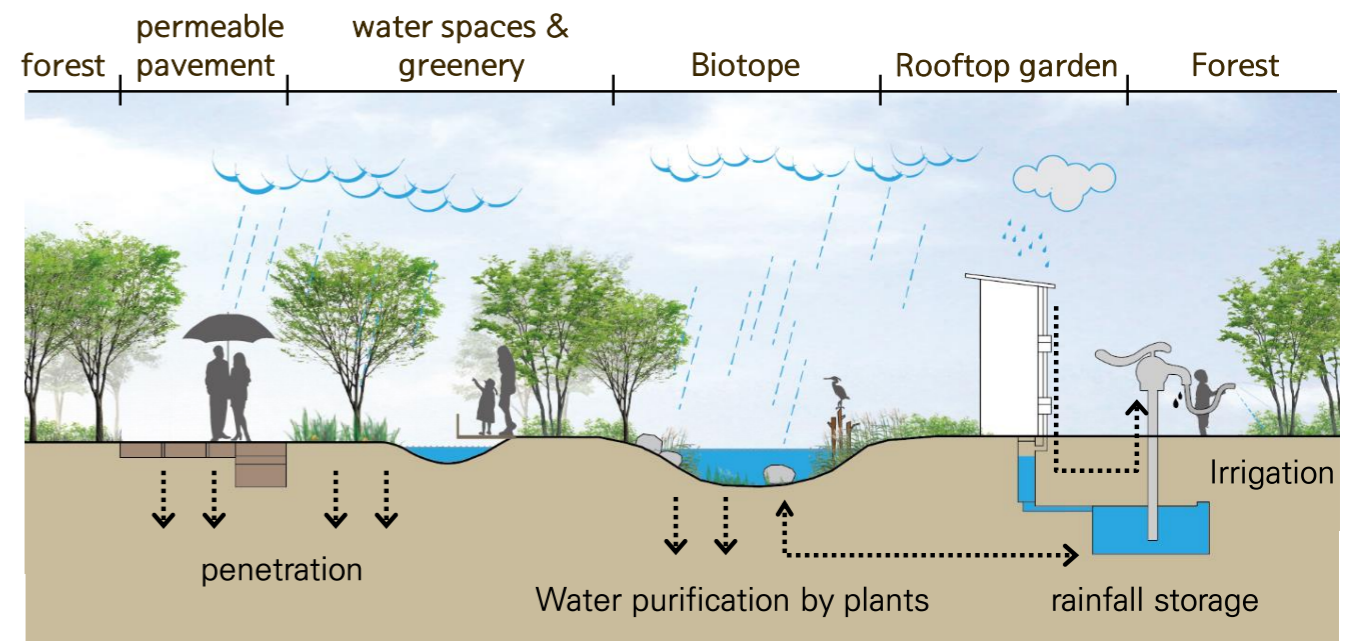
Located adjacent to Daemo-san and Guryong-san, this complex incorporates 60,000m<sup>2</sup> of green space, constituting 41% of the total resident area. It features multilayered forestation around the perimeter and diverse vegetation within, creating not only a scenic landscape but also an ecologically healthy environment. Additionally, 23% of the resident area, including emergency vehicle lanes and pedestrian pathways, is designed with permeable blocks and structures to facilitate smooth rainwater infiltration and circulation. Accumulated runoff is utilized for irrigation, and rooftop reservoirs collect water for plant maintenance. The extensive forests and planted areas attract local fauna, while biotopes support their growth. Playgrounds and gardens are equipped with mists, fountains, and waterfalls to address climate change adaptation efforts.

# Eco Friendly System

## Climate-resilience & Eco-friendly resident complex

Located adjacent to Daemo-san and Guryong-san, this complex incorporates 60,000m<sup>2</sup> of green space, constituting 41% of the total resident area. It features multilayered forestation around the perimeter and diverse vegetation within, creating not only a scenic landscape but also an ecologically healthy environment. Additionally, 23% of the resident area, including emergency vehicle lanes and pedestrian pathways, is designed with permeable blocks and structures to facilitate smooth rainwater infiltration and circulation. Accumulated runoff is utilized for irrigation, and rooftop reservoirs collect water for plant maintenance. The extensive forests and planted areas attract local fauna, while biotopes support their growth. Playgrounds and gardens are equipped with mists, fountains, and waterfalls to address climate change adaptation efforts.

## Facilities & Programs



## peripheral forests & permeable pavement



## Cooling mist & Biotope



## Waterfall & fountain

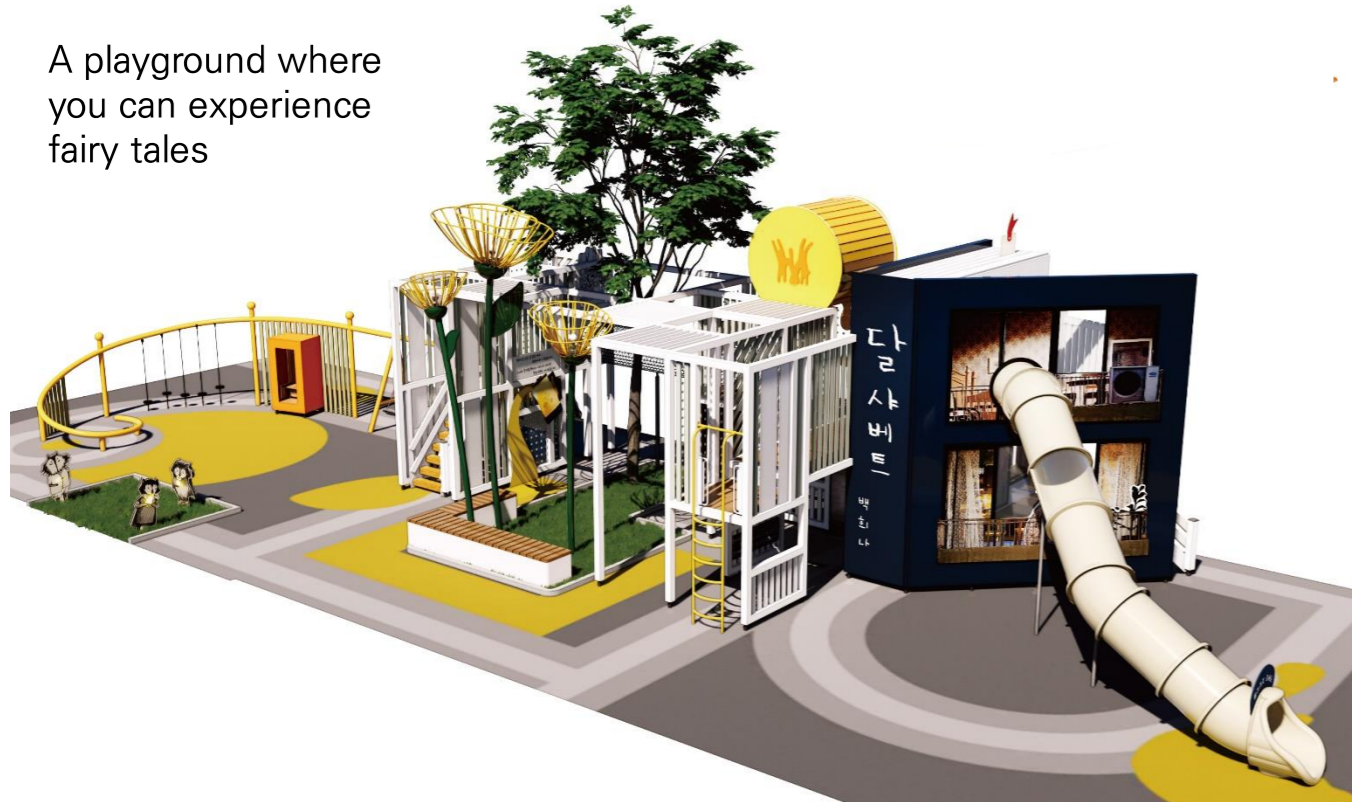


# Artist's work in Landscape

We introduce diverse artistic elements from various genres throughout the complex to provide residents with varied experiences and to stage an elegant landscape for the community.

## Co-work with tale artist

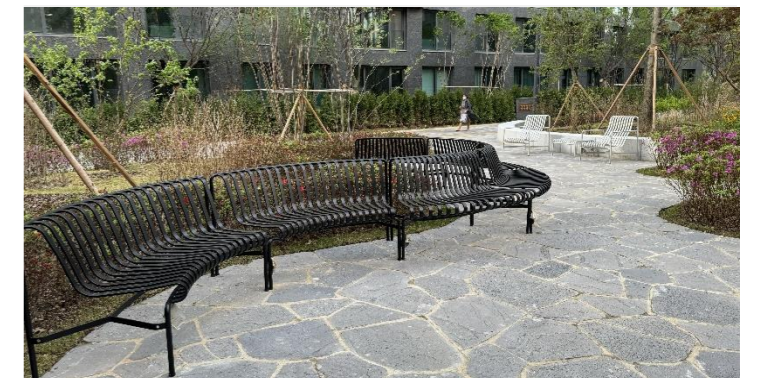
A playground where you can experience fairy tales



## Co-work with garden artist



## Designer's Collection Furniture



## Art Works



# Play & Athletics for every class of people

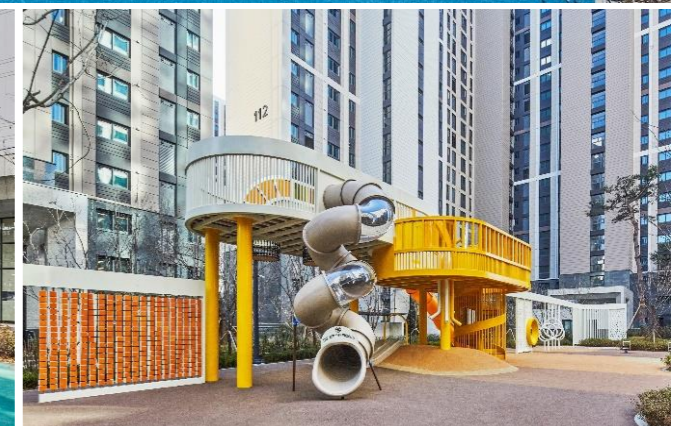
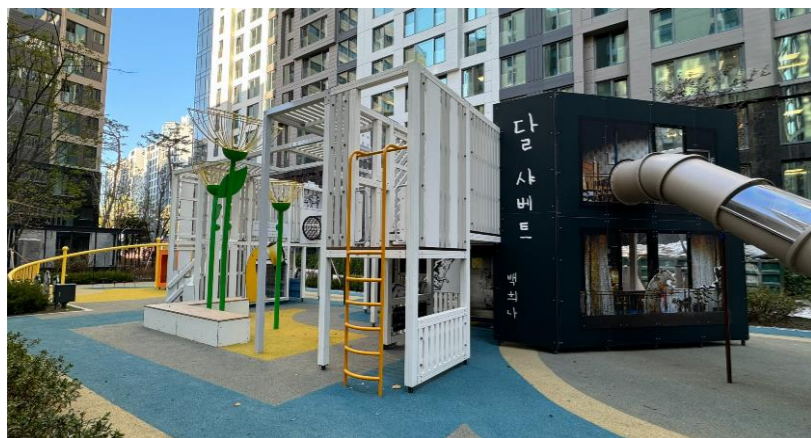
A diverse range of themed play areas and age-specific structured exercise programs ensure happiness for all residents.

it boasts seven playgrounds, each with unique themes and designs, incorporating landscape-oriented staging to harmonize with the surroundings, offering varied and engaging play experiences. The community fitness facilities cater to diverse age groups within the complex, ensuring comfort and accessibility for families, seniors, and children alike.

Athletics ground : senior, family, cross fit, adult fitness



7 Theme playgrounds : tales, character, mist, forest, music...



# IPARK Gardening Class with residents

## Collaborating with a Garden Designer to Create a Unique Garden

Through collaboration with garden designer, we have created artist gardens in various locations within the resident complex such as the Dramatic Circle, Urban Garden, and Wonderful Meadow. Additionally, by hosting gardening classes for residents in these artist gardens, we provide educational opportunities for those who have a passion for gardening and plants among the residents. It is expected that the community formed among them will serve as a driving force for maintaining the quality of the gardens within the resident complex continuously.

**seven seasons**

2024 HDC -  
*Gardening Class*

우리 아파트 정원 관리를 위해  
해야 할 일들을 배우는  
기초이론 및 실습 위주의 가드닝 수업.

Starts In March 2024  
Ends In November 2024.

**GARDENING CLASS  
SEASONAL PROGRAM**

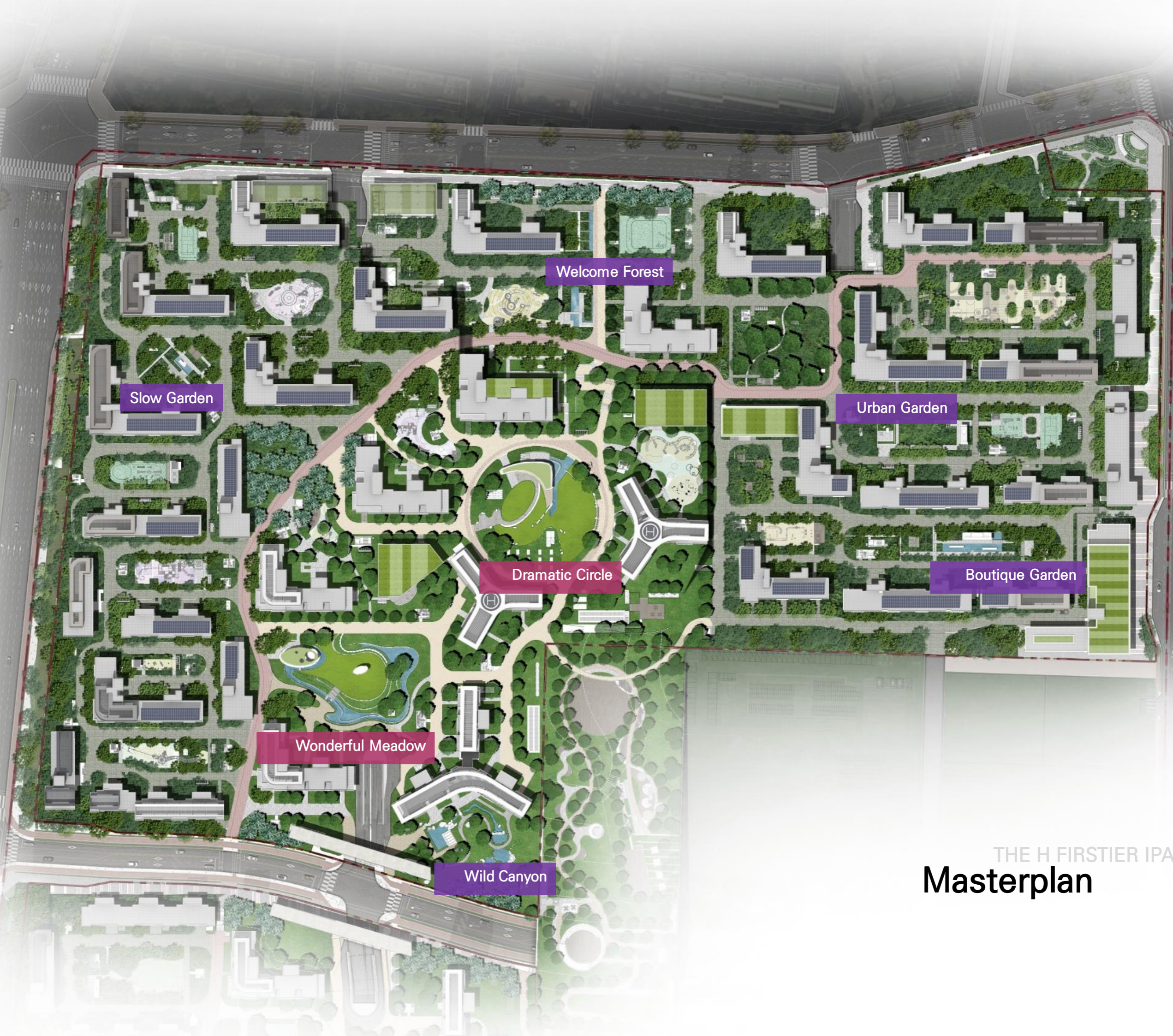
**Spring**  
What is planting & garden  
Soil & fertilizer  
Breeding / spring flower

**Summer**  
Blight & Weeds / mulching  
Perennial herb  
European Garden

**Fall**  
Healthy planting & Growing  
Grasses / plants of fall  
Seed Breeding

**Winter**  
Prepare for winter  
Bulb / Texture & winter Color





Welcome Forest

Slow Garden

Urban Garden

Boutique Garden

Dramatic Circle

Wonderful Meadow

Wild Canyon

THE H FIRSTIER IPARK  
**Masterplan**

# Wonderful Meadow

The main Signature park harmonizing resort-style water features with graceful curves and grassy courtyards.

A distinctive space with unique customization details, where free-flowing curved spaces create a diverse landscape that changes dynamically with the viewer's perspective.



# Wonderful Meadow

The main Signature park harmonizing resort-style water features with graceful curves and grassy courtyards.

A distinctive space with unique customization details, where free-flowing curved spaces create a diverse landscape that changes dynamically with the viewer's perspective.



# Wonderful Meadow

The main Signature park harmonizing resort-style water features with graceful curves and grassy courtyards.

A distinctive space with unique customization details, where free-flowing curved spaces create a diverse landscape that changes dynamically with the viewer's perspective.



# Wonderful Meadow *IPARK LOUNGE*

The oval IPARK Lounge, in harmony with this environment, serves as a shared lounge contributing to resident communication and community activation. In a sophisticated interior space, residents can enjoy day and night views with mists, fountains, and artworks, and engage in community activities.



# Dramatic Circle

A dramatically expansive open field unique to large-scale complexes

A circular space is adorned by the IPARK Pavilion, resembling objet d'art, complemented by water features, anchoring the center with luxurious textures and forms of exquisite artworks, elevating the entire space with elegance.



# Dramatic Circle

A dramatically expansive open field unique to large-scale complexes

A circular space is adorned by the IPARK Pavilion, resembling objet d'art, complemented by water features, anchoring the center with luxurious textures and forms of exquisite artworks, elevating the entire space with elegance.

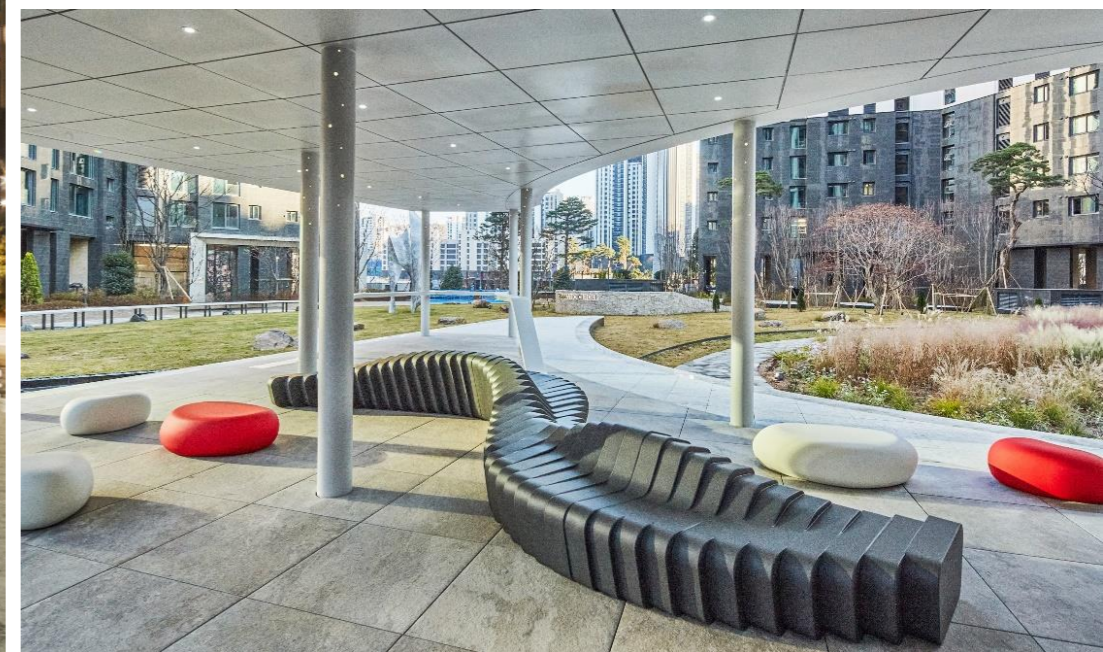
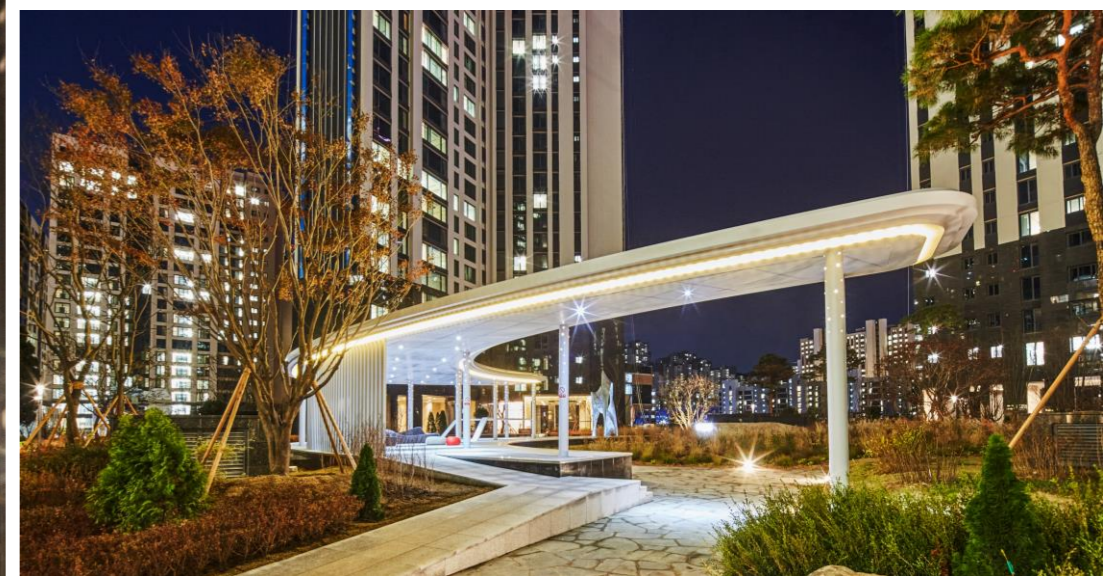
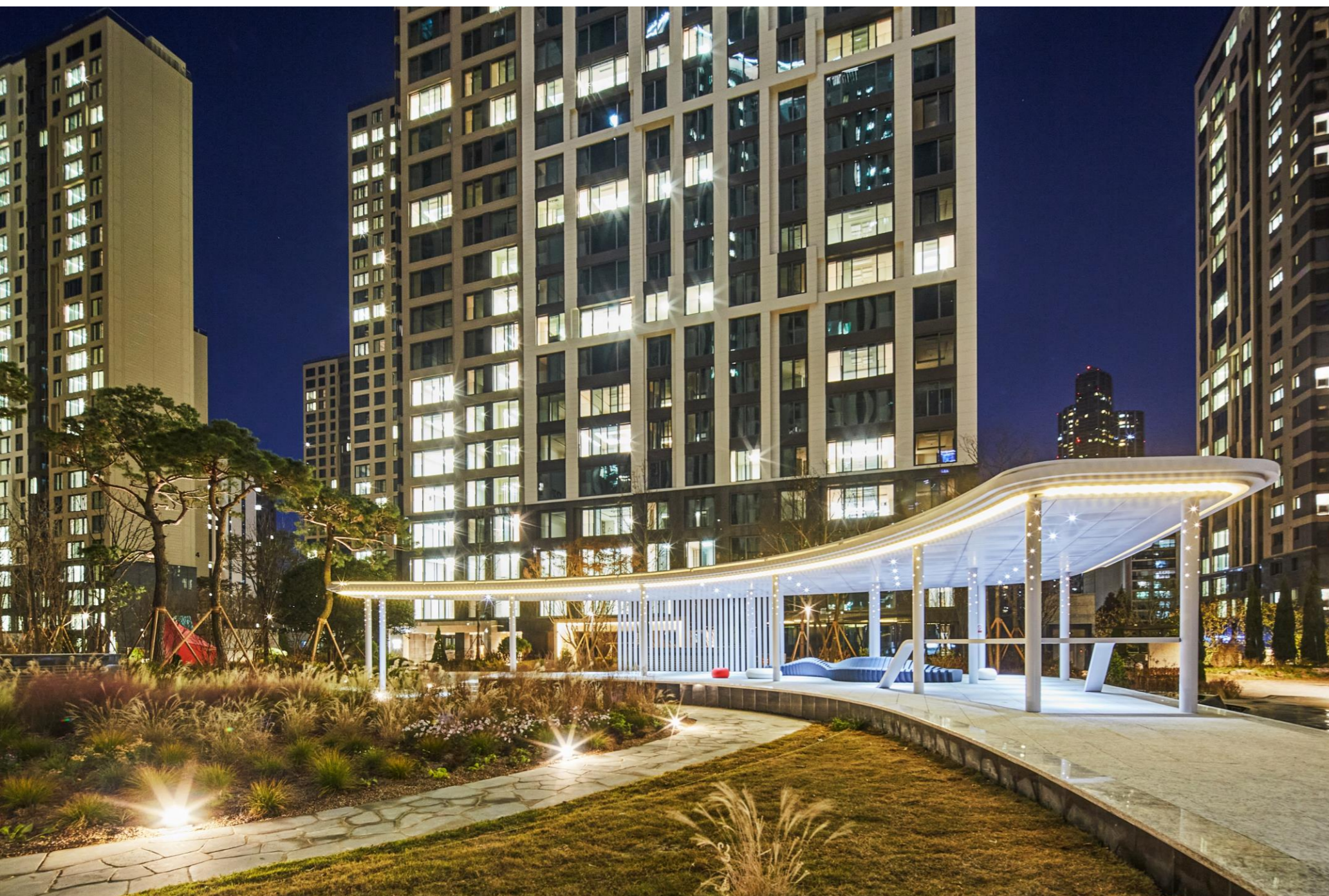


# Dramatic Circle *IPARK PAVILION*

The I-Park Pavilion, with a graceful form resembling that of a single white objet

Through designer facilities and night landscape displays, we aim to create a unique image.

Gardening classes, where residents participate, provide an educational opportunity for those passionate about gardens and plants. We hope that the community formed among them will become the driving force for maintaining the quality of the gardens within the complex.

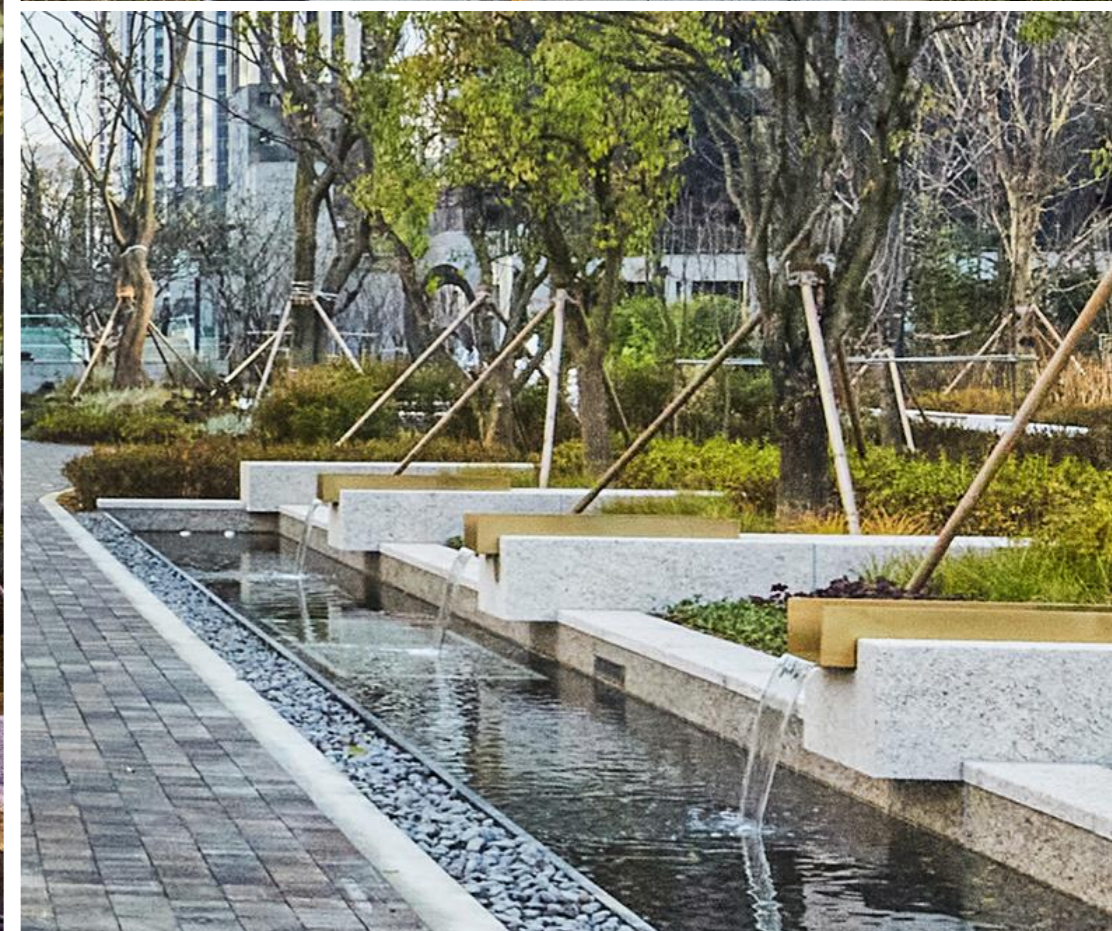
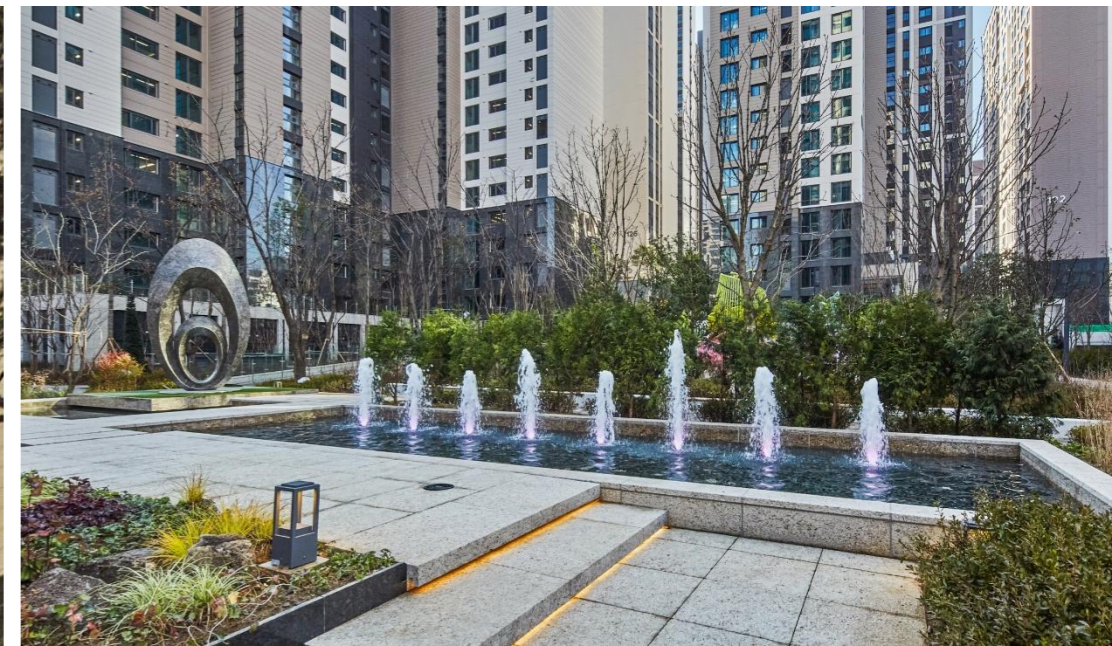
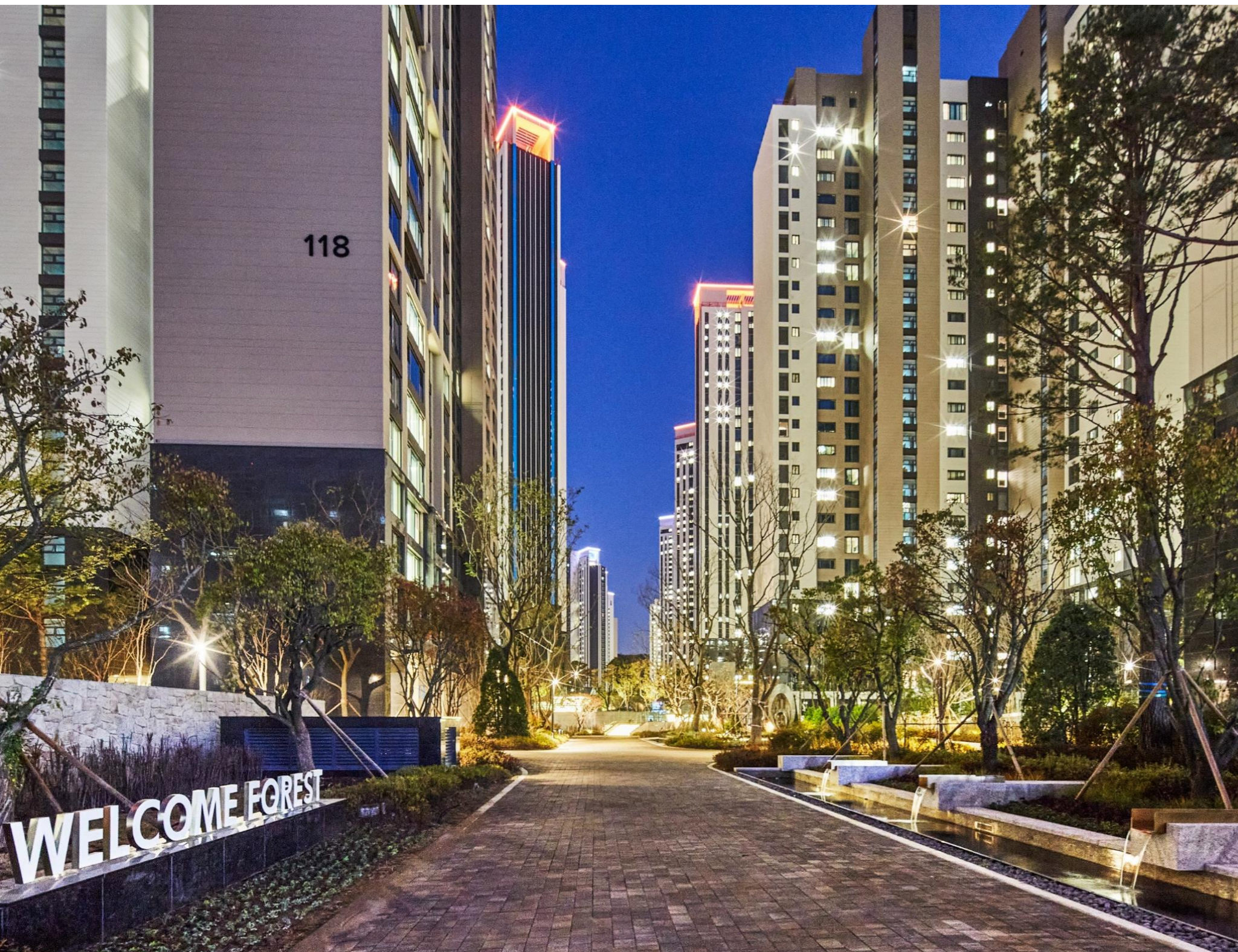


# Welcome Forest

A stunning space that sets the first impression of an enclave surrounded by lush natural beauty

Cascading ponds connected along the pathway and various ponds and gardens harmoniously blend together with terraced levels.

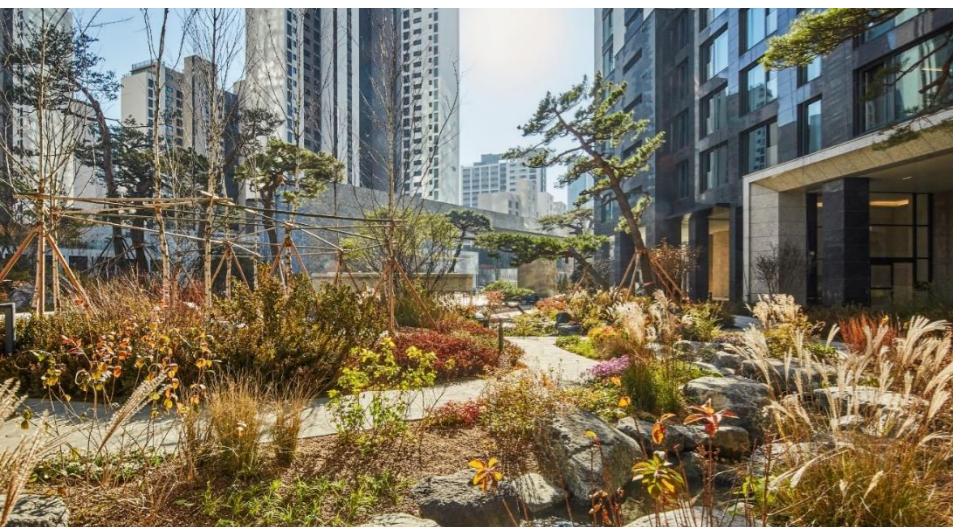
The artwork serves as a focal point of the scenery, creating a luxurious ambiance.



# Wild Canyon

A space that awakens the sense of nature in the city center and is carefully embodied through the formation of the land and the planting of various species

A garden where you can leisurely admire Seokgasan Mountain and Silgaecheon Stream from the pavilion and enjoy a walk in all four seasons while enjoying contemplation by naturally creating seasonal flowers and natural stones around Silgaecheon Stream.



# Boutique Garden

A garden where the gently flowing sound of water is beautiful, allowing you to experience a refined urban sensibility

Utilizing the characteristics of rectangular shapes, creating a linear space with grid-like details, a minimalist pavilion and pond are crafted, evoking a leisurely holiday atmosphere akin to a resort.



# Urban Garden

A subdued-colored teahouse and a beautiful European-style garden featuring immaculate lawns and seasonal plantings for all four seasons

A structured evergreen creates a neat framework, while the border garden along the walls presents varied appearances throughout the seasons.

Expansive lawns with majestic large trees serve as focal points, creating a spacious and leisurely garden.



# Slow Garden

A garden nestled in the heart of the city, where mist gently envelops the forest, exuding a serene yet mysterious charm

Sitting in a tea house with unique furniture and facing the rough-finished stone walls and water features, you can enjoy a tranquil garden with soft mist and lighting

