



HANGZHOU BAY, HANGZHOU, CHINA

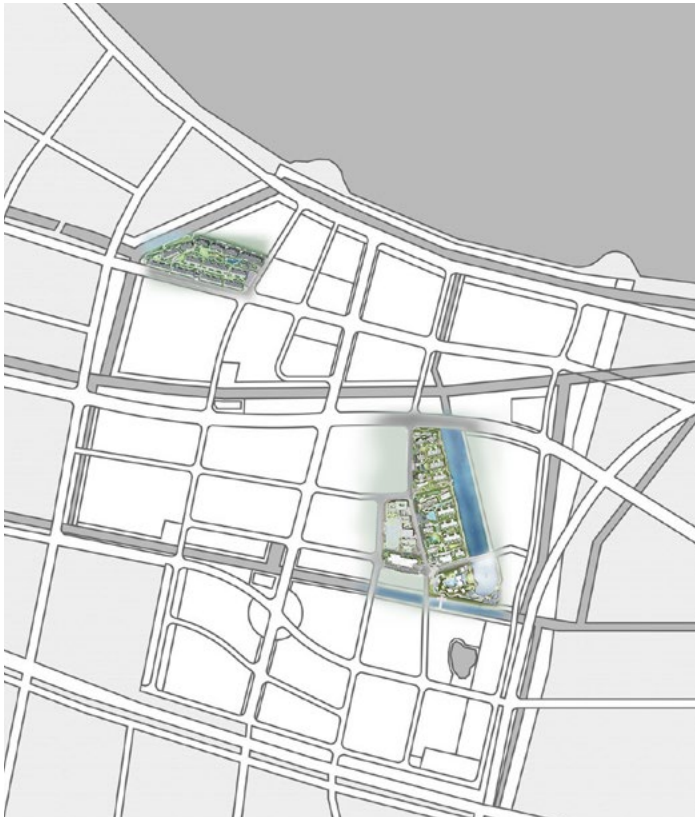
PROJECT STATEMENT

In consideration of the needs of residents' life and urban development, Hangzhou Bay project has successfully practiced a model of urban composite community for the city, which not only meets the diversified needs of urban life, but also creates a vibrant and humanistic community space to provide residents with a comfortable and convenient living experience. As a composite community, the naturally shared public open space promotes interaction and communication among residents and enhances the cohesion of the site.

Hangzhou Bay is a planning-level landscape project in the urban dimension, creating an open and shared complex super-large property with the logic of "city", and devoting itself to the creation of a vibrant and communicative community space. In terms of site planning, the community incorporates modern living patterns to meet the needs of different groups of people. At the same time, the public service facilities in the community have also been improved, bringing together convenient shopping mall, public green areas, fitness facilities, cultural and entertainment venues, etc., providing residents with a comfortable and rich lifestyle.



PROJECT NARRATIVE AND CONTENTS



Urban complex international communities have a strong sense of community, how to ensure the sustainable growth of the community linkage with the neighbourhood, incorporate multiple cultures to build a lifestyle suitable for modern living, and provide a sense of identity and belonging while maintaining vitality is an important topic of this community building exercise.

Urban & Social Significance | Since its launch in 2017, the Hangzhou Bay project has had an important demonstration and leading role in urban development, the whole project has lasted for 7 years and is fully completed in 2023. Its successful practice not only provides residents with a safe, livable and vibrant community environment, but also embodies the organic combination of human habitat and urban functions, which has a positive and far-reaching impact on promoting community coexistence and sharing, upgrading the quality of the city and improving the quality of life of residents.

Sustainable Eco-design Strategies | In order to realize the sustainable eco-design strategy, we take a comprehensive thinking approach, focusing on the balance of environment, society and people, and conduct a holistic landscape planning for the whole bay plate, with multi-disciplinary collaboration with developers, governmental departments, enterprises, communities and schools, to consider the wholeness of the ecosystem and to explore innovative solutions together. We are committed to creating environmentally friendly solutions, realizing the symbiosis between human and nature by living in harmony with nature, and creating green, healthy and sustainable international friendly communities.

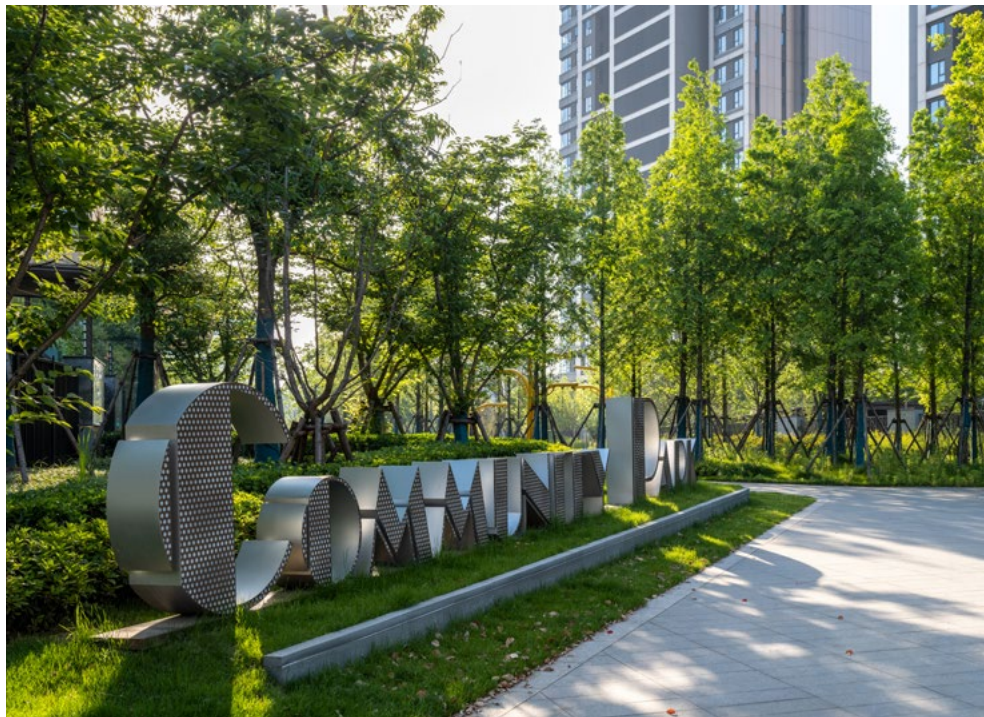
PUBLIC OPEN SPACES

Shared Social Gathering Place

The concept and practice of sustainable development of Hangzhou Bay community has far-reaching significance to the development of the region and even the city. The community park makes use of the unused or not yet reasonably utilized space between plots in the project area to create an urban micro-space that can be close to the lives of the residents in the neighborhood, providing a place for people to take a rest and activities while enhancing the value of the community, creating a pleasant living environment, and allowing the residents to enjoy the combination of nature and the city.





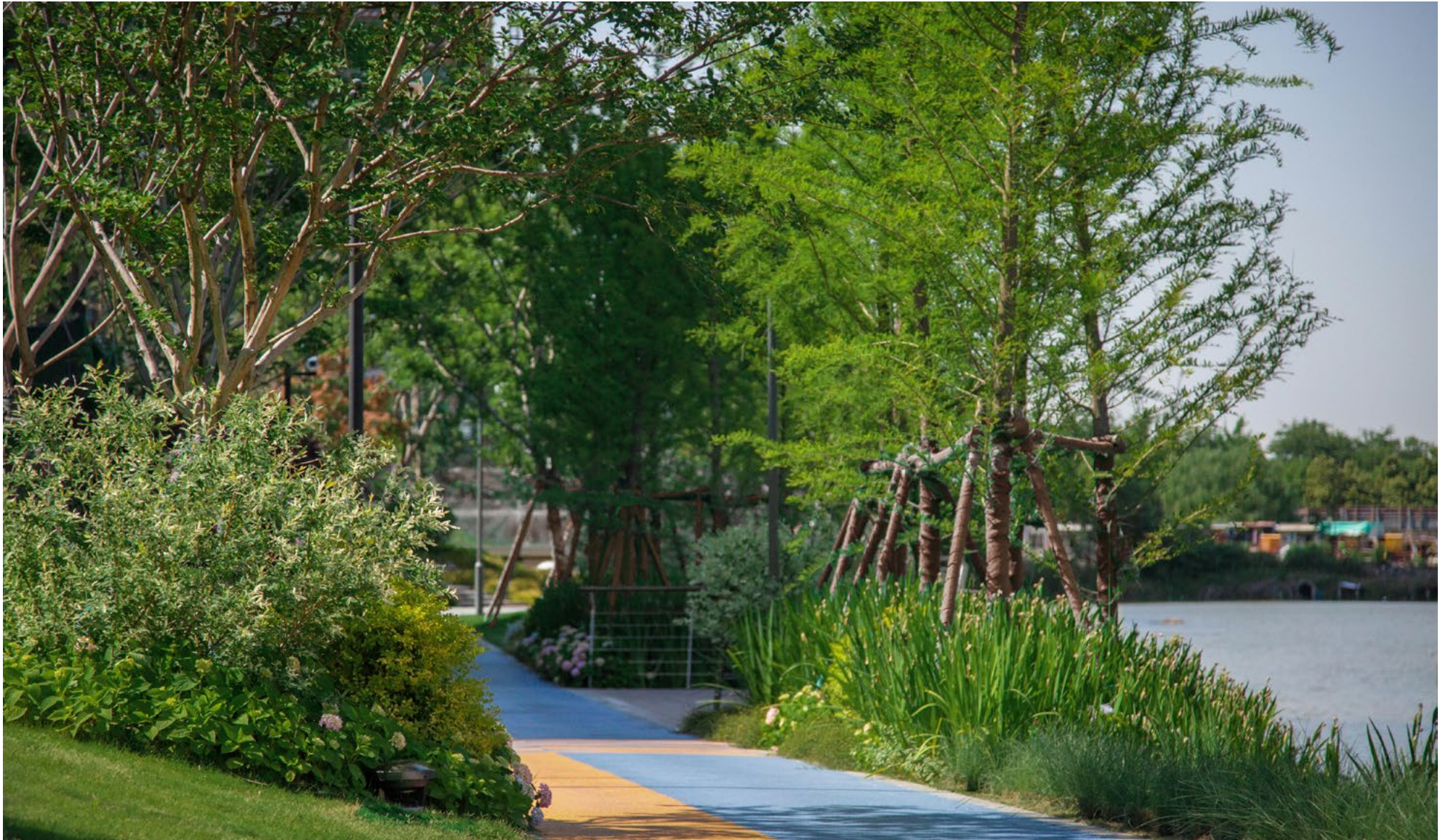




The community emphasizes the construction of an eco-friendly international community, maximizing the use of the site's existing natural resources through rational planning, and creating a waterfront green belt and a borderless park to provide landscaped recreational and children's activity space for the area, also creating a healthy and livable living environment for residents.



The community park provides a common gathering place for residents, injecting vitality and cohesion into the community, where residents can connect and socialize, thus promoting friendly relationships and interactions in the community.

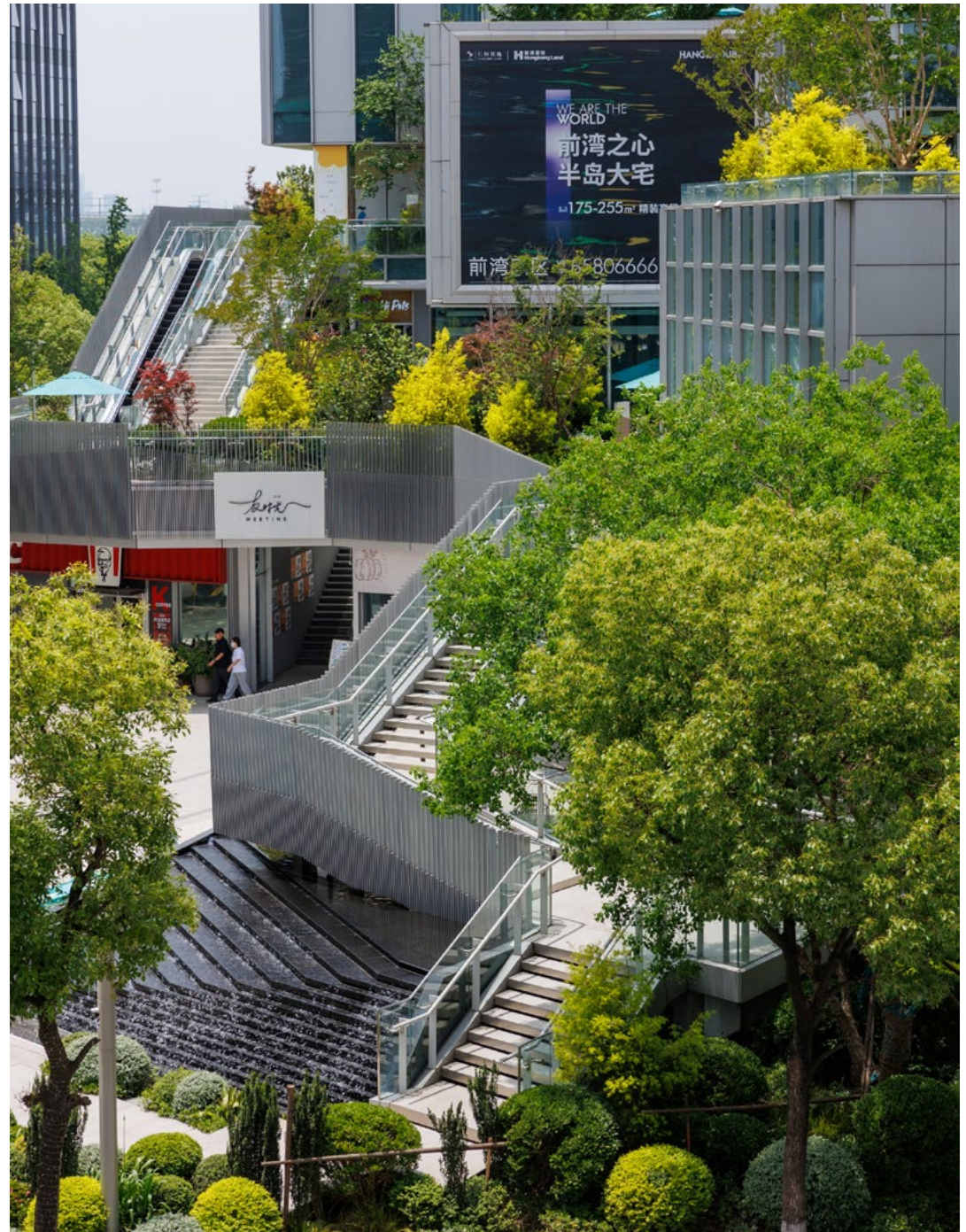


The park along the river is intended to create a low-maintenance simulation of the natural ecological environment. Using a large area of ornamental grasses, to ensure the continuity of the other seasons, the spatial transition nodes are dominated by persistent flowers and ornamental grasses, minimizing the cost of artificial maintenance while creating a rich natural gradation and the atmosphere of the four seasons is distinctive. Adhering to the principle of ecological nature, respecting the original laws of nature and the ecological circle, not only can bring the practical value of low maintenance and high ornamental, but in the long run, it can introduce nature into the city and integrate with each other.

COMMUNITY COMMERCIALS

Community Vitality Sharing Pulse

Community commercials are designed to meet the various needs of different users, linking multiple blocks in the neighbourhood and introducing multi-functional and flexible spaces to fill the gaps in leisure and entertainment of the daily life, creating diversified living experiences for residents and social opportunities for neighbours, so as to build a vibrant and sharing pulse in the community.







The plants at the entrance combined with the waterfall landscape create a forest-like commercial atmosphere, provide a comfortable and green spatial experience, and stimulate the vitality of the three-dimensional traffic flow. Simple and clean linear paving combined with ground lighting design makes the entrance more guiding. The boundary of the flexible plaza is slightly enclosed so that it can gather more popularity and thus meet the needs of various gathering and activity spaces.



Combined with the corners of the building to create a tree line space, interactive water features to attract children to participate in it, to enhance spatial interactivity and fun, combined with colourful graffiti open-air seating, to become a place for residents to stay and rest, communication and sharing, and to create opportunities for social interaction in the community neighbourhood.



Community commercials provide a diverse range of facilities, from supermarkets to restaurants, cafes to retail outlets, the area has a full range of business types. The commercial area becomes an extension of the community's daily activities, allowing residents to enjoy convenient services in a comfortable environment.

HABITAT FOR HUMANITY

Natural Symbiotic Park Experience

The multi-dimensional experience of the composite scene is created through the communion of man and nature, creating a livable and pleasant living environment for the residents. In the homecoming line, starting from the main entrance, along the central swimming pool area, and through the inter-house area for convenient homecoming. The rhythmic and orderly spatial organization leads the space opening and closing changes, to enhance the transition of spatial experience.





Based on Hangzhou's urban temperament, the concept of "trend" is extended into a panoramic trendy lifestyle, creating a park-like natural community experience in a modernist style.

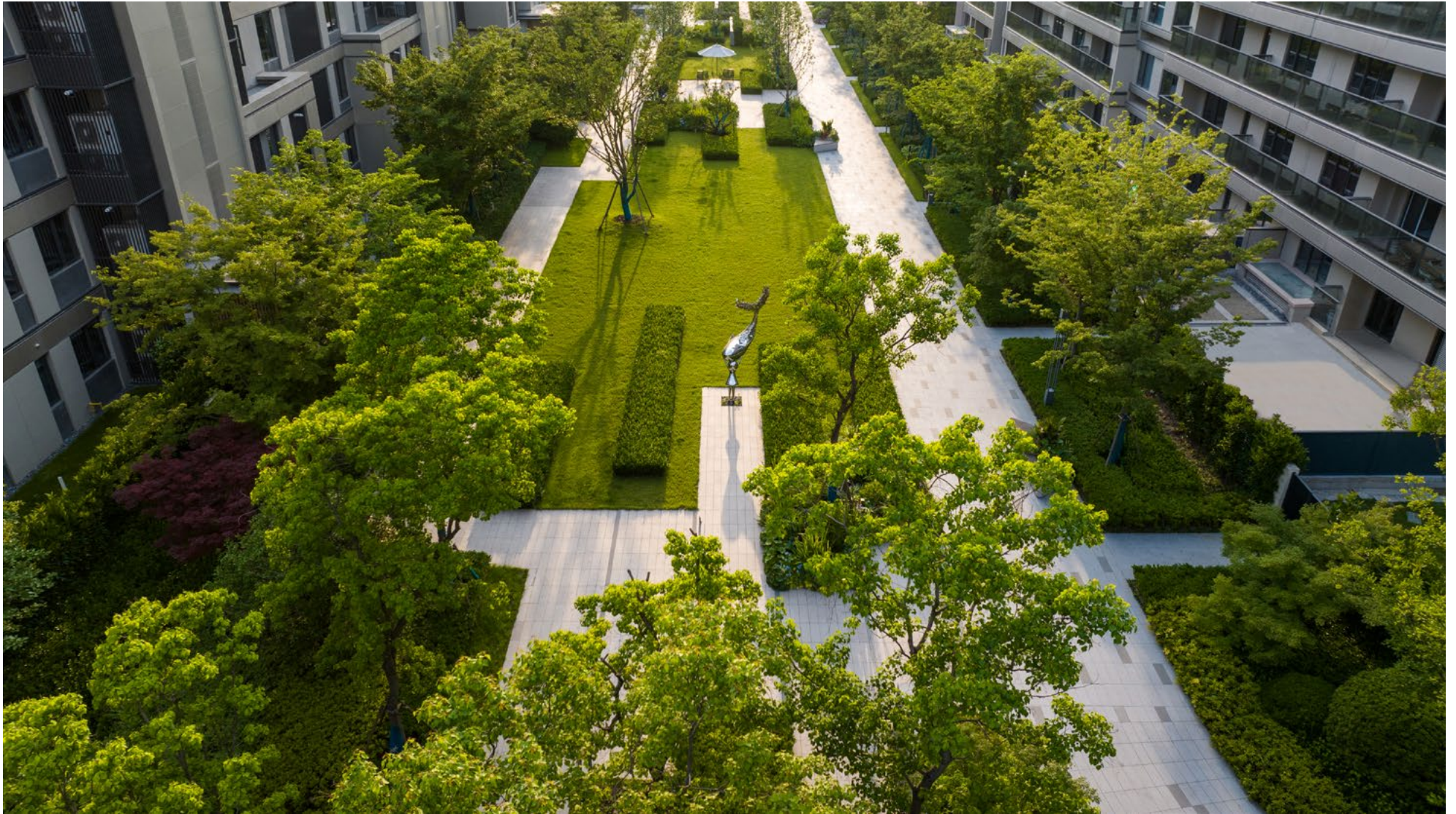




Abandoning complex lines and stacking techniques, the project creates a new definition of borderless living with comfortable scales and exquisite materials, redefining the hotel-like landscape experience.



The design focuses on creating the central core landscape area, outlining a rich spatial experience with a modern and simple design language while creating a comfortable and natural living scene. The language of "trend" connects the multi-functional places, creates the core axial landscape space and a whale-themed special activity space to meet the various needs of children in their different growth processes. The children's activity space under the canopy of trees provides an opportunity to get in touch with nature, and in the embrace of the sunny lawn and resting pavilions, children can relax and enjoy the beauty and tranquillity of nature.

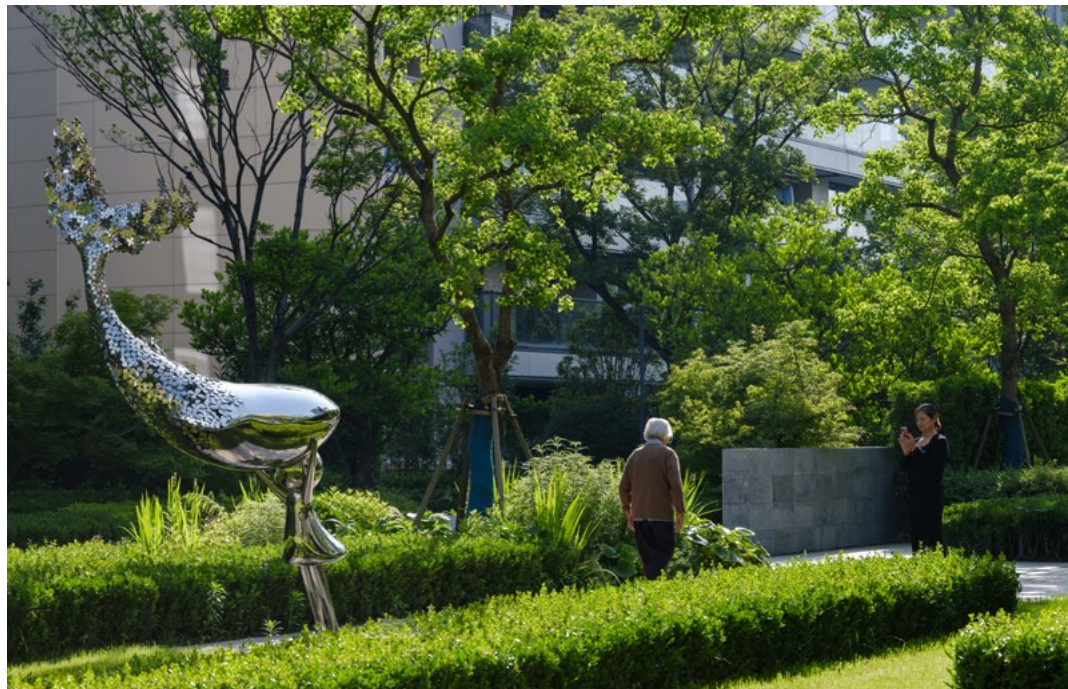


Combined with the building layout, the strip tree belt is introduced to form a green corridor, and at the same time, the approach of creating a natural forest is adopted to create a large park-like community, and the ultimate space is constructed by penetrating green plants.





The green background of the site is dominated by pure forest, and the concept of tree belt is integrated into the site, so that it can be better integrated with nature.



The introduction of colorful foliage plants enriches the seasonal changes of the site and creates a colorful plant space. Shrubs and ground covers are added to strengthen the sense of scale and enrich the visual diversity.

Comparison of spring and autumn

GREEN CAMPUS

Ecological and Natural Integration of Cultural Education

The community focuses on cultural heritage, considers all aspects of residents' lives, and provides high-quality schooling resources. The natural ecology garden school provides students with a rich and diverse learning environment by integrating teaching concepts with the landscape to create interesting and versatile functional venues.



THANKS