

TRX CITY PARK

Kuala Lumpur's People's Place





CONTENT

01 PROJECT STATEMENT
INTRODUCTION
PUBLIC ACCESSIBILITY
MALAYSIAN COMMUNITY SPACE

02 PROJECT NARRATIVE AND CONTENTS
DESIGN CONCEPT
CHALLENGES

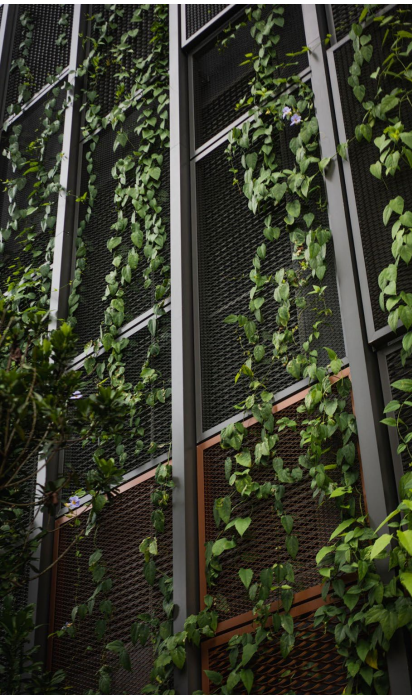
03 ENHANCING SOCIAL COHESION
SENSE OF PLACE
VISUAL WALKTHROUGH

04 BUILDING RESILIENCE THROUGH DESIGN
PLANTING TYPOLOGY
ETHNOBOTANICAL ZONES
PLANTING DESIGN

05 SUSTAINABLE DEVELOPMENT GOALS

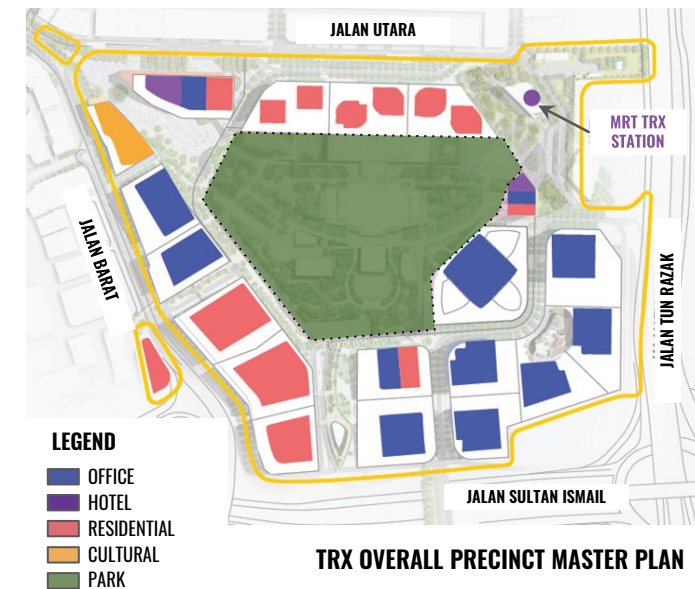


TRX CITY PARK



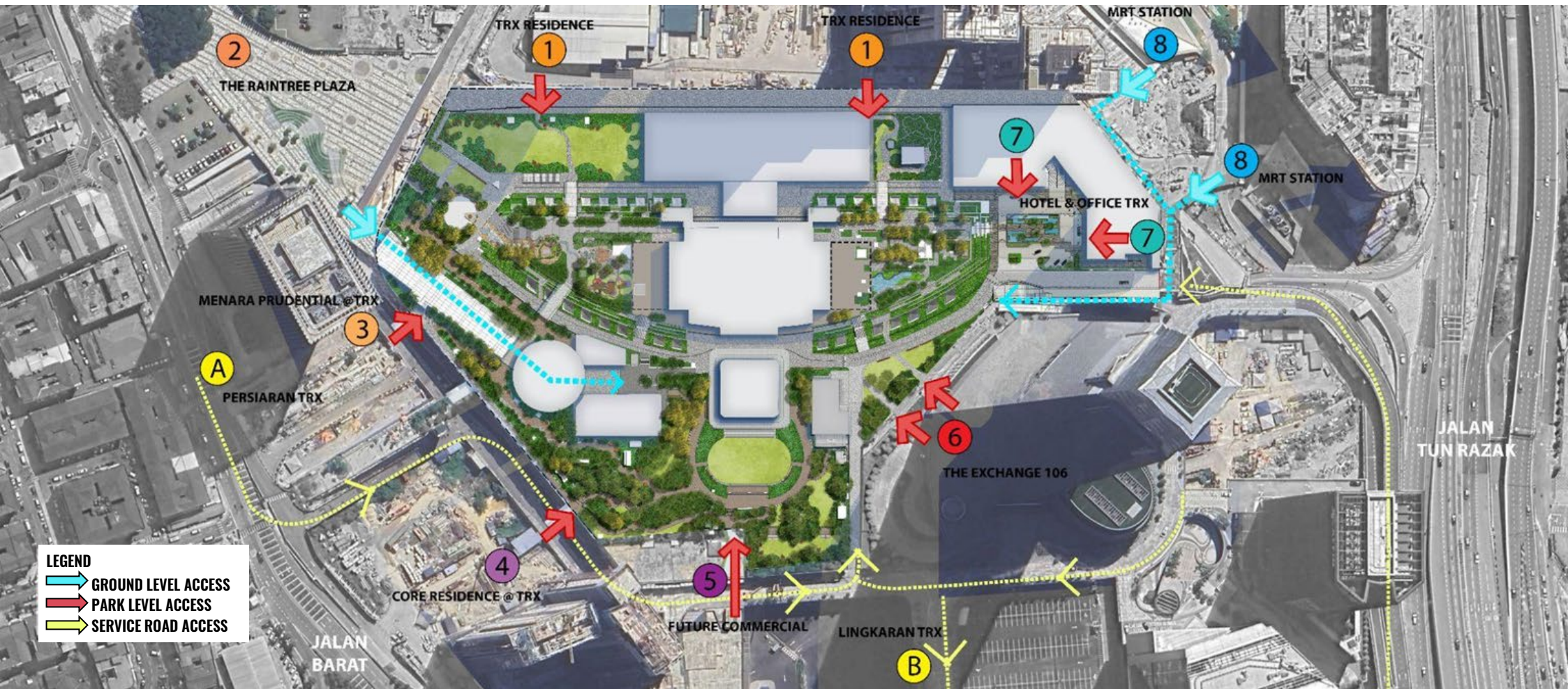
INTRODUCTION

TRX City Park in Kuala Lumpur spans more than **10 acres** and is the **largest elevated public park in Southeast Asia**. It is at the heart of the newly planned TRX district that includes the city's financial center and prime retail hub. It is the **first major public park** delivered in Kuala Lumpur for over 20 years.



01 PROJECT STATEMENT

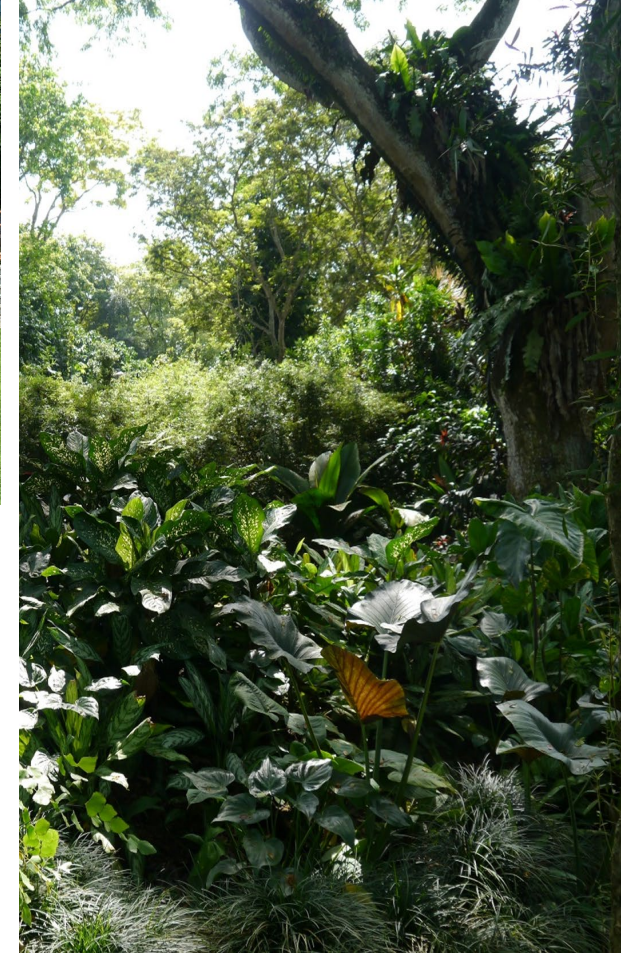
TRX CITY PARK



PUBLIC ACCESSIBILITY

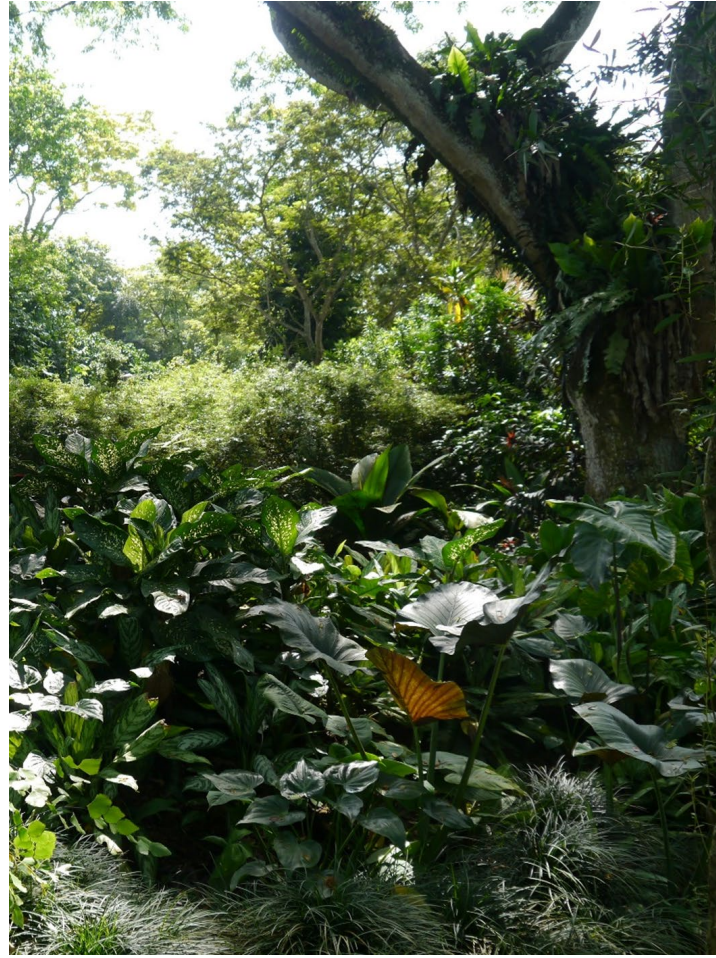
The contemporary rooftop park integrates seamlessly into the precinct's lifestyle quarter, providing an **oasis for the local community** in the **dense urban city**, an activated **event space** with large canopies, and **direct connectivity** to the expanding Mass Rapid Transit (MRT) public transport system with access points on all sides.

As a public park, it falls under the stewardship of Kuala Lumpur City Hall as a key part of the **public open space network** in line with the Kuala Lumpur Structure Plan 2040, which aims to transform **Kuala Lumpur** into a **green and sustainable city** for all.



MALAYSIAN COMMUNITY SPACE

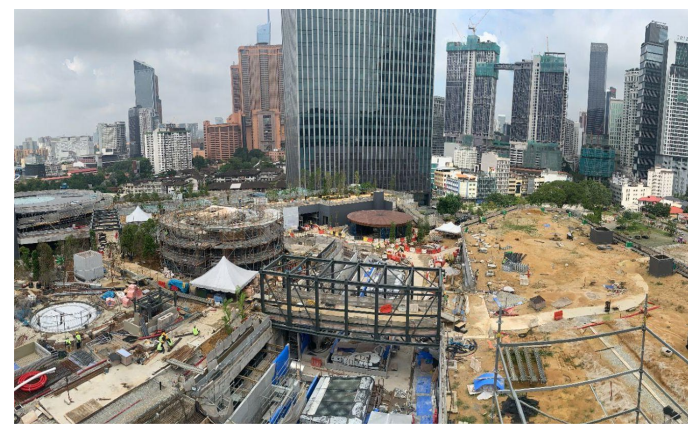
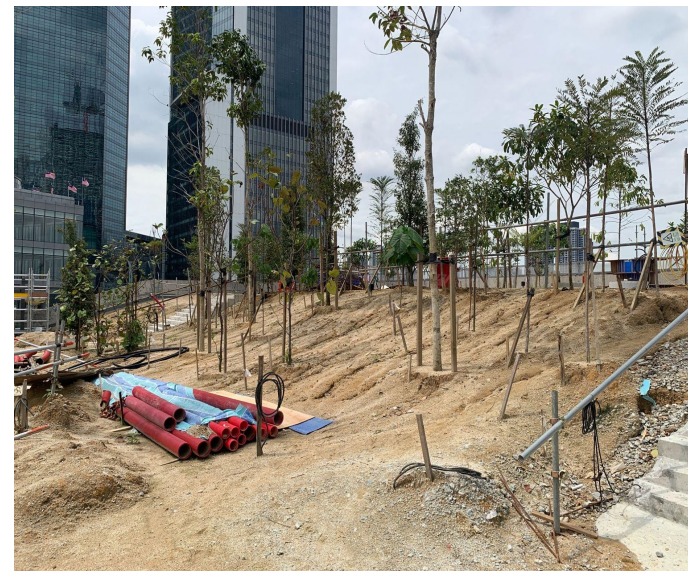
As a **community space** made for the **Malaysian public**, it encapsulates a distinctively local experience; the ethno-botanical roof top park has a dedicated children's play area, sculptures from local artists, and features **95% indigenous planting** with 49 tree species and nearly 180,000 locally sourced plants from around the country.



DESIGN CONCEPT

A key design concept for the park was to represent **diverse elements of the Malaysian landscape** in the layout to ground a distinct sense of place and references to a Malaysian identity. The Park is spread across two floor levels which has provided an opportunity to explore landscape types that could be associated with changes in topography.

This translates to distinct, active, and green interlinked community spaces. Key landscape typologies represented in the park include; **Forest edges, limestone outcrops, urban village, hillside ravines, hillside streams leading to coastal lowlands and landscapes that are modified by ethnobotanic planting.**



CHALLENGES OF AN ELEVATED PARK

As the entire rooftop site was comprised of buildings of differing heights, this created a **considerable variation of roof levels** in addition to variation in loading tolerances of each rooftop. The design concept for the rooftop park overturns the fragmented nature of individual **rooftops by conceptualizing them as a series of widely distinct indigenous Malaysian landscapes**. This unifies the spaces under a **strong Malaysian theme** and creates a narrative in the traversal of the park that goes hand-in-hand with grounding a sense of identity, place, and aesthetic value.



SENSE OF PLACE

The design approach integrates design elements that instil a strong sense of place with the underlying context that our local environment is both a necessity to be preserved, and a luxury to be enjoyed. By unifying a range of contrasting ecologies under **a single banner of Malaysian landscape**, the park depicts an active social and physical space that is not divided by communal differences, but instead, **celebrates the diversity of our own people** living on the land.



CONNECTIONS & LINKAGES

Design connectivity to the surrounding developments and public infrastructure was a key objective. Not only does the park connect to the ground level adjacent spaces, it is designed to interlink with adjacent buildings and elevated public spaces in the vicinity.

With multiple access points connecting to the surrounding public spaces, offices, and residences, it is impossible to close down the park, making it effectively operational for 24 hours a day.

Area of Park – 10.32 acres

Kuala Lumpur City Hall Stratified Park Area – 7.05 acres



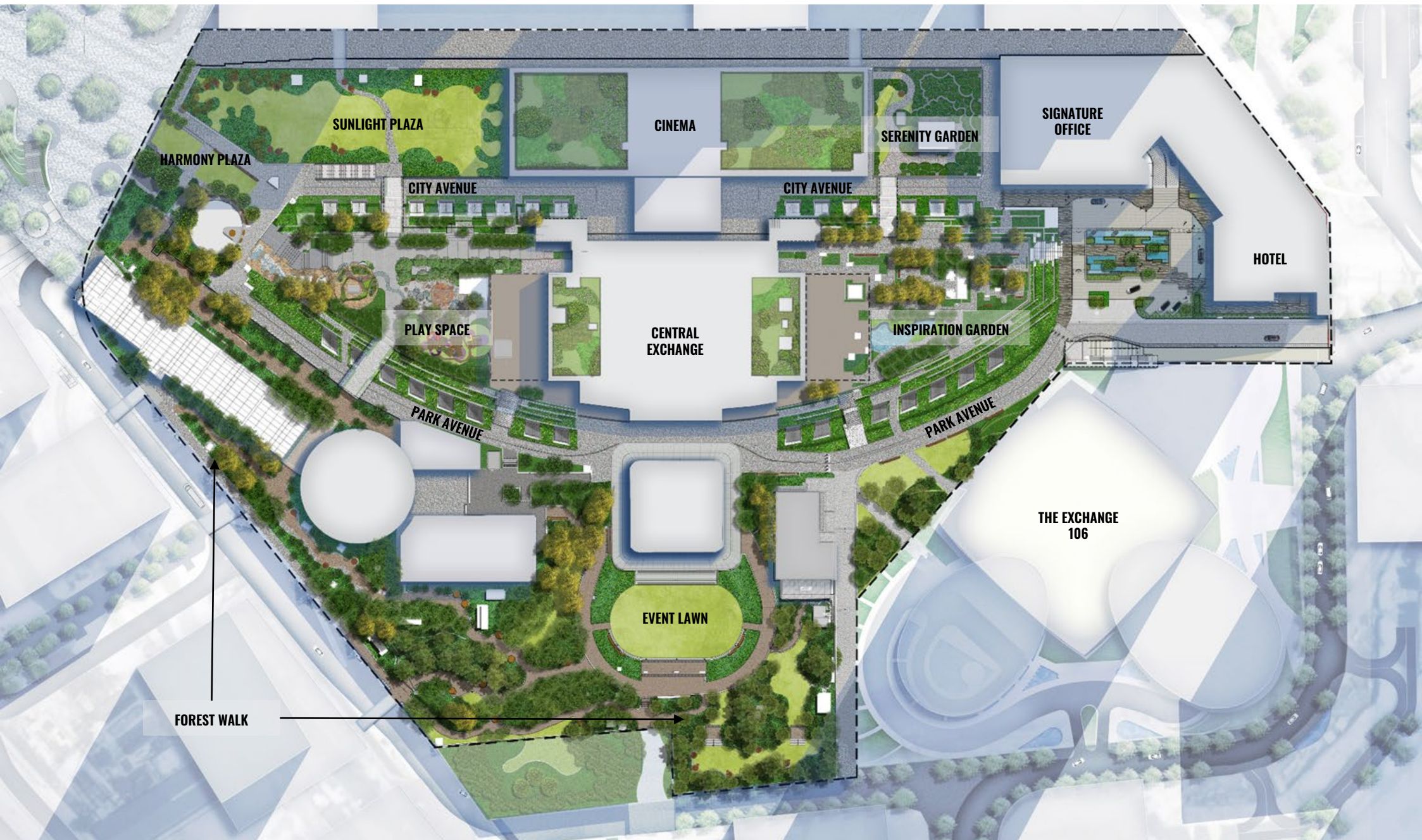
PUBLIC MEETING SPACES

In the context of the dense Kuala Lumpur city centre, a free and accessible public green space becomes a central point for community gatherings with both formal and informal event spaces catering to the multitude of monthly ethnic and religious festivities. In one of the most overworked and competitive cities in the world, facilitating leisure, spaces of relief, and connecting social groups is becoming increasingly important.



CHILDREN, LEARNING, AND PLAY

With a plethora of demarcated children's play areas, the park becomes a focal point for families on both weekends and weekdays after work. These spaces that include the water features, limestone caves, and playground provide interaction for social and group play for developing children. These elements also feature educative signage relating to the Malaysian natural landscape, at an appropriate linguistic difficulty.





Programmed events here will allow this space to be used for community events celebrations and concerts.

EVENT LAWN



Smaller open community spaces are scattered within the Forest Walk.

FOREST WALK ENCLAVE



The Forest Walk provides a green linkway to public transport and neighbouring infrastructure such as the new 106 financial center.

FOREST WALK ENCLAVE



The public park is secured with smart posts that diffuse light and allow for security monitoring.



The Forest Walk is created by the use of a large number and variety of Malaysian tree species and associated underplanting to provide a unique jungle experience on an urban rooftop.

FOREST WALK



The planting design creates distinct open community spaces throughout the 10 acre park.

FOREST WALK



Access points connect seamlessly at all corners of the elevated park, from both ground level and the neighbouring developments.

FOREST WALK: ETHNOBOTANIC PLANTING



The Nectar Garden hosts sweet smelling plants that attract butterflies and dragon flies. Dragonfly motifs and sculptures cement this square.

FOREST WALK: NECTAR GARDEN



Spaces such as the children's play area and open lawn are interlinked and easily accessible for OKU (Special Needs) persons.



Comprising of Water Play for younger children, Play Village integrated play structure for pre-school aged children through to early teens, the Play Cave experience for young teenagers and the Western Water Feature steps, for all to interact with.

PLAY SPACE



The play area with its water features and kinetic water playground remain ever popular with families, especially on weekends.



The waterfall in the 'limestone' cave play area flows into a traversable river section below.



The community play areas are lit in the evenings with security in the vicinity.



This climbing zone is modelled after Malaysia's natural limestone caves, with educative signage in the front.



The park is used also as a circuit for jogging and walking in the evening.

PARK AVENUE



The Sunlight Plaza is an open lawn space popular for community picnics and gatherings.



The distinct typologies of the park make for discrete community spaces which remain interlinked.

CITY AVENUE



Sculptures by local artists grounds the Malaysian identity of the park.



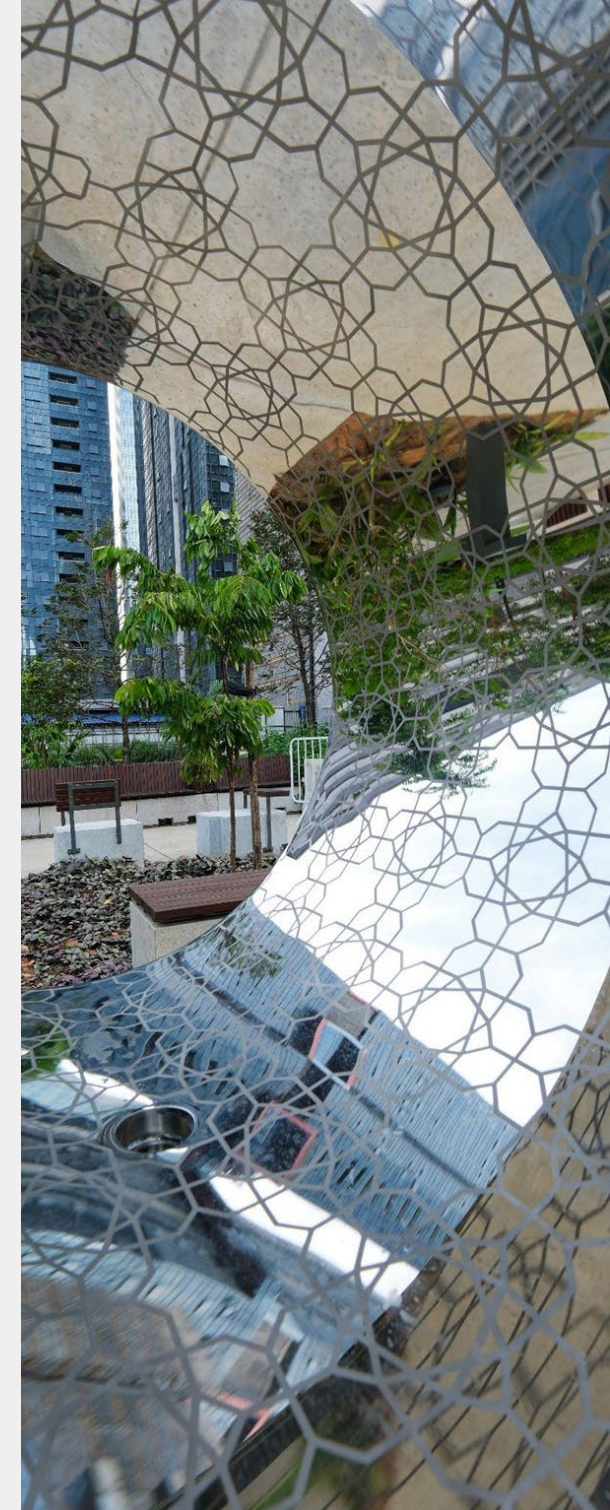
A promenade route around the park provides both a recreational resource and an opportunity to people watch and interact with others.



A quiet garden space refuge with a native fish pond in the centre. Plants are selected for both flower colour and fragrance in this space



A popular sculpture for community interaction and reflection.



INSPIRATION GARDEN



A collection of medicinal and edible plants that could be cultivated in kampung gardens provide a setting to the Surau.

Planting at TRX city park is designed to **define community spaces**. Plants have been selected to address the physical and **spatial design requirements** for each of the different scenarios throughout the park. A diversity of trees, climbers, mid-story and under-story plants have been chosen to provide a variety of functions such as creating enclosure, framing view-lines, and providing shelter. Plants have been selected to fulfil certain physical functions, but also must be suited to the **unique growing conditions of a large urban rooftop garden**.

In addition to the aesthetic and functional aspect of the planting design, an overlay of select feature plants throughout the **park narrates a story of Malaysia's unique ecosystems**. The planting design across the site celebrates the distinctive geographical and topographical plant typologies that are found across Malaysia and portrays them in an urban park setting. In achieving this, the plant selection is predominantly of native and naturalized plants. Other **ethnobotanic plant species** are introduced in some areas as cultural references, or to provide particular characteristics to enhance specific areas within the park.

Key Planting facts

Number of plant species used in the park

Number of shrub, herbaceous and understorey palm species – **139 No.**

Number of tree and palm species – **48 No.**

Total number of plants used in the park

Total Number of Shrubs, herbaceous and understorey palms planted – **almost 150,000 Nos.**

Total Number of Trees and Palms planted – **Over 1000 Nos.**

Plant species with strong Ethnobotanical associations:

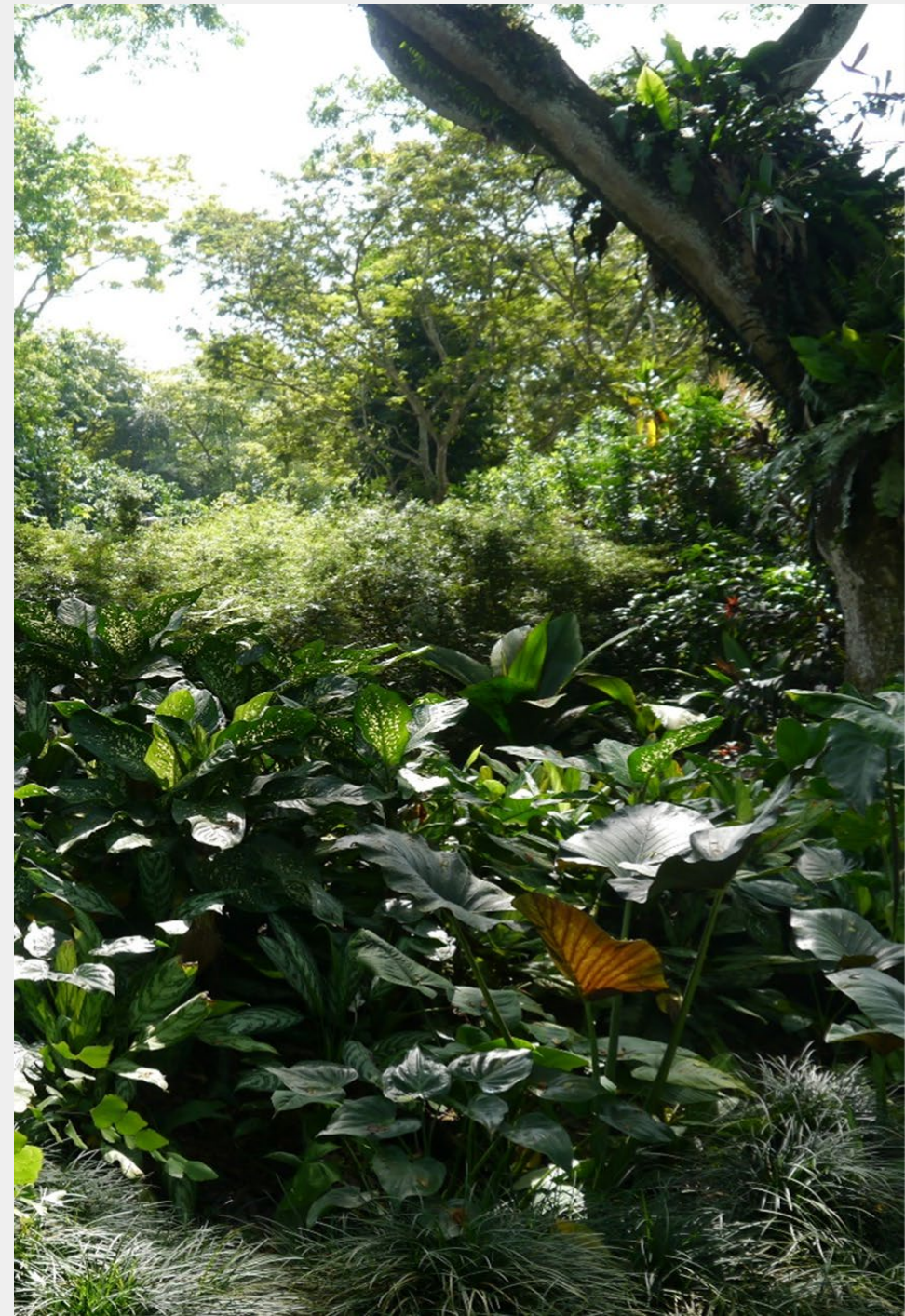
Shrubs, herbaceous and understorey palms **70%**

Trees and palms **85%**

Plant species that provide food sources for wildlife:

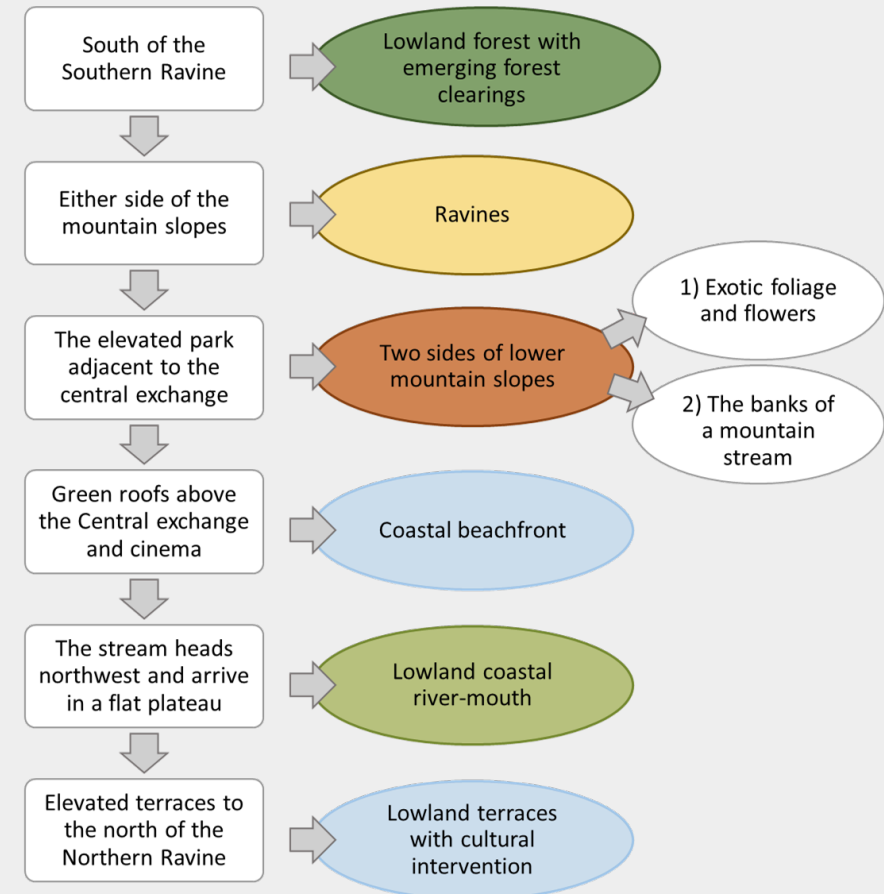
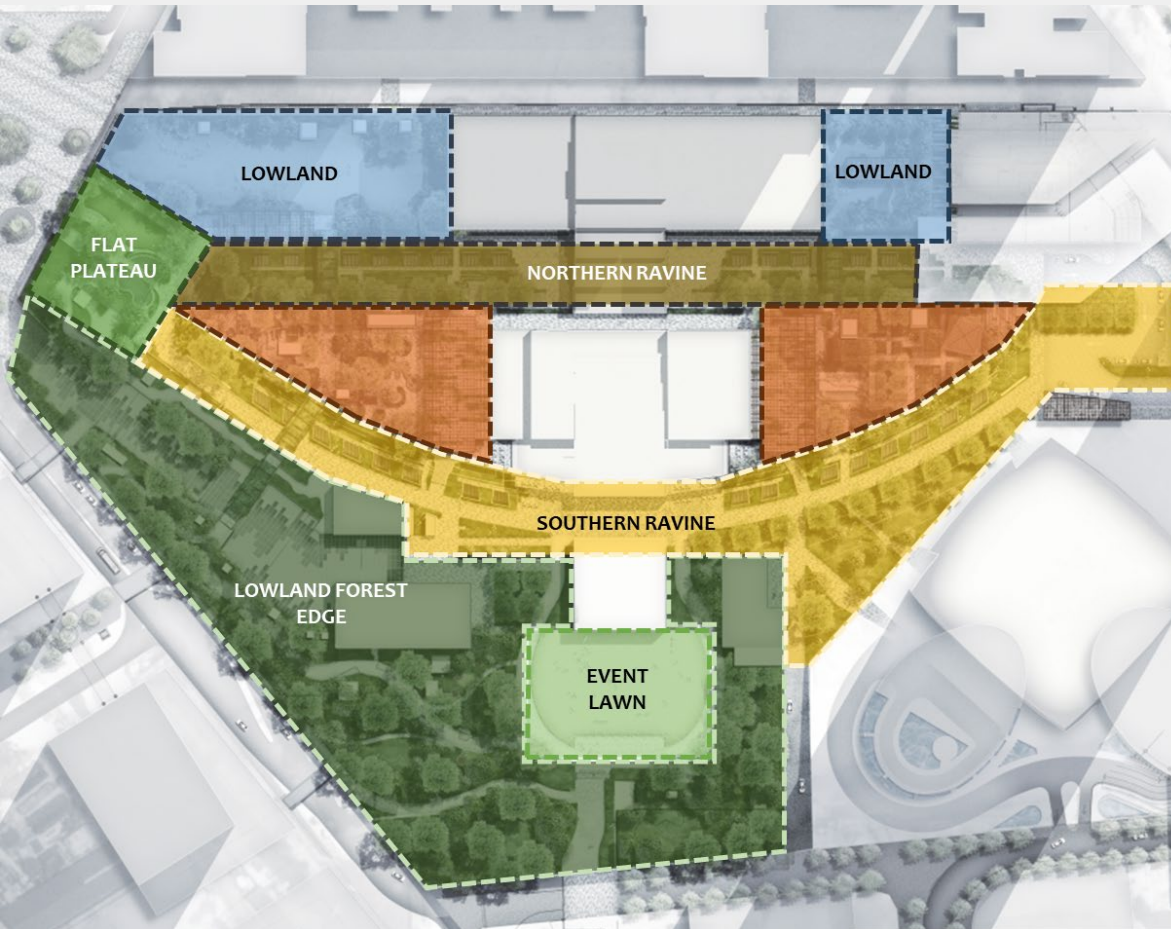
Shrubs, herbaceous and understorey palms **37%**

Tree and palms **38%**

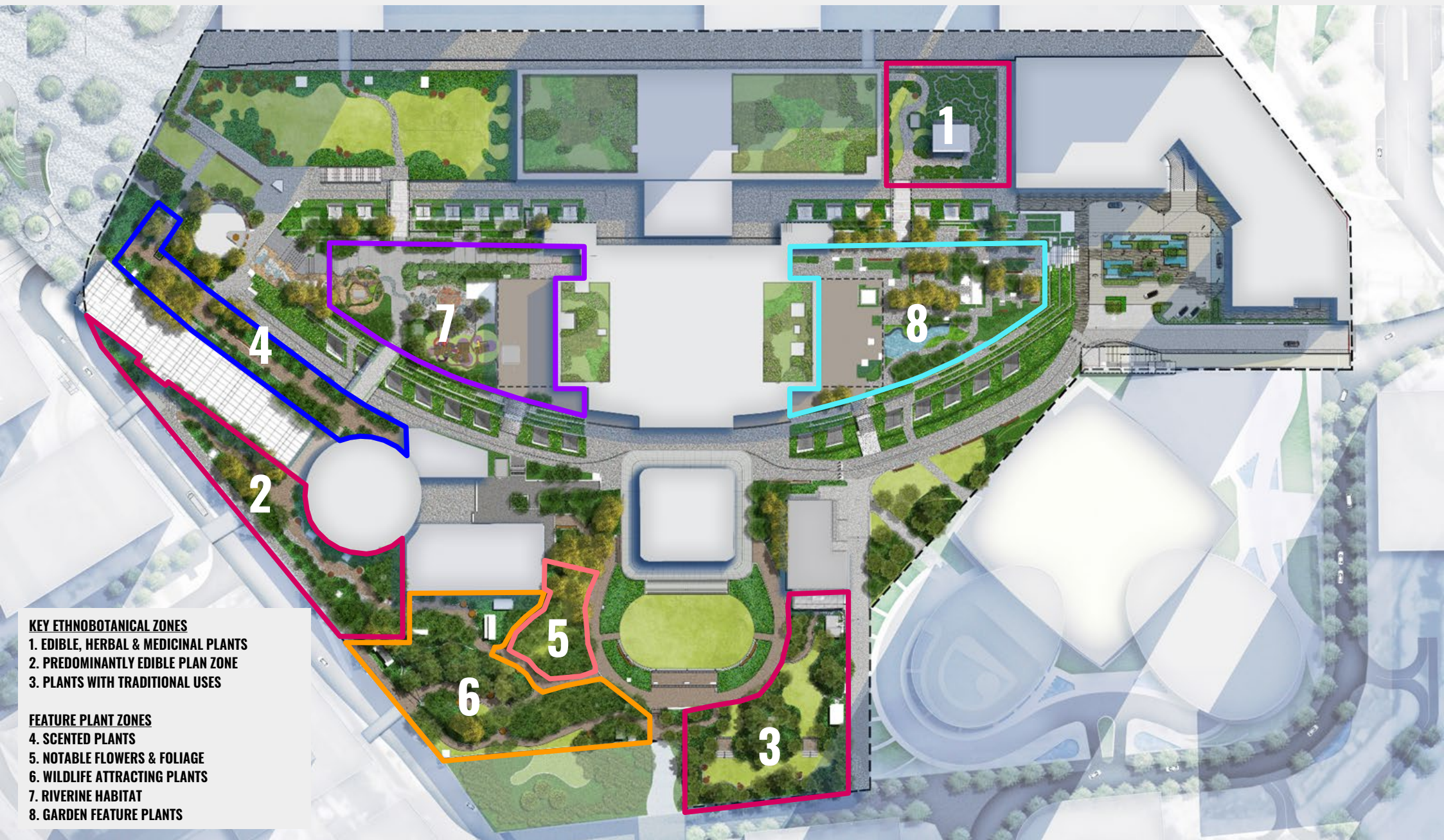


PLANT TYPOLOGY BASED ON CHANGES ON PARK FLOOR LEVEL

The changes in level that occur across the park allude to the plant typologies that are expressed through the park:



Plants types are selected to reflect the overall overriding narrative and to assimilate into the character of the different elements of the park.



Additional layers of plant theming laid over Malaysian landscape typologies.

OVERALL PARK – SIGNATURE PLANTS

Selected plants are of particular interest because of their special characteristics, distinctive features and Malaysian cultural significance.

***Tristaniopsis whiteana*****River Tristania / Pelawan**

A coastal plant with distinct smooth peeling bark that is orange-grey-brown in colour.

***Melaleuca cajuputi*****Paper Bark / Kayu Putih**

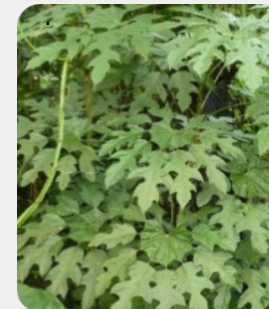
The leaves are silvery that exudes tea-tree smell when crushed. The trunk has flaky appearance and is whitish to greyish brown in colour.

***Eurycoma longifolia*****Long Jack / Tongkat Ali**

Common herbal shrub usually found along the slopes of hilly terrains of the Malaysia Rainforest. It is also known as Malaysian Ginseng

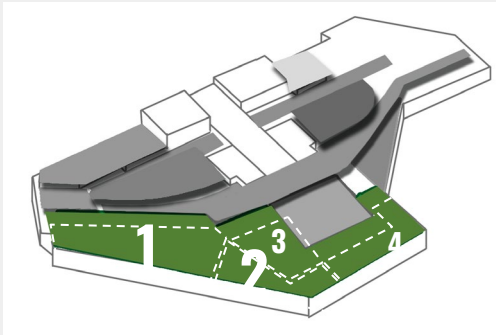
***Molineria latifolia*****Sweet Seed Plant / Kepala Puyuh**

Commonly cultivated in the food industry for its edible seeds. The leaves are used by the locals for wrapping foods particularly in Borneo.

***Trevesia burckii*****Ghost's Foot / Jari Hantu**

Remarkable for its unique and unusual pseudo-compound leaves.

PLANTING ZONES & KEY SPECIES

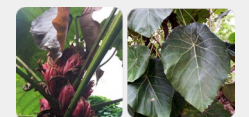


FOREST WALK



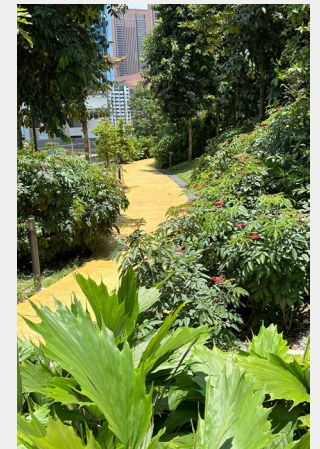
1. ETHNOBOTANICAL FOREST

Dense forest area with pathway surrounded by plants with various ethnobotanical uses.

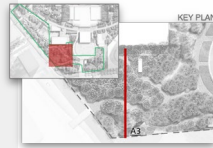
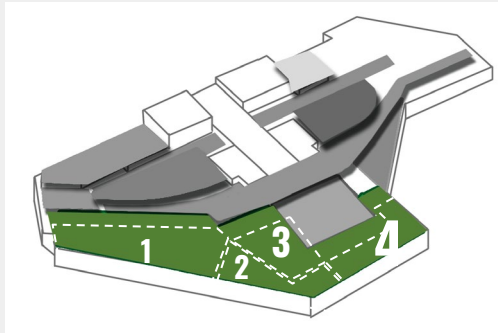
*Cynometra cauliflora**Ardisia elliptica**Flacourtia inermis**Gnetum gnemon**Etlingera elatior**Orthosiphon aristatus**Psidium littorale**Alocasia macrorrhizos**Cynometra cauliflora**Alocasia macrorrhizos*

2. HIGH AND LOW DENSITY FOREST

Dense forest planting softens hard building edge next to area of light, sparse planting offering clear views across.

*Flacourtia inermis**Gnetum gnemon**Macaranga grandifolia**Cynometra cauliflora**Etlingera elatior**Macaranga grandifolia**Ardisia elliptica**Psidium littorale**Orthosiphon aristatus**Cynometra cauliflora*

PLANTING ZONES & KEY SPECIES



3. THE FOREST WALK

Semi-dense forest planting with meandering forest walks offering filtered views throughout.



Sterculia parviflora



Selaginella sp.



Johannesteujsmannia altifrons



Arenga hookeriana



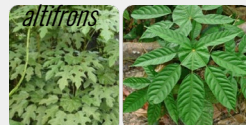
Sterculia parviflora



Costus speciosus



Spathoglottis unguiculata



Trevesia burckii



Diospyros buxifolia

4. THE MULTILAYERED FOREST

Dense to semi-dense forest layers (emergent, canopy, understorey, forest floor) planting along the park edge surrounding an open lawn space.



Cassia alata



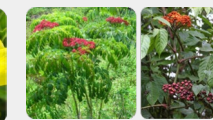
Psidium littorale



Strobilanthes crispus



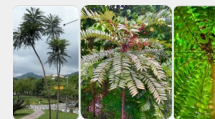
Leea guineensis



Dillenia suffr



Callicarpa formosana



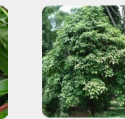
Eurycoma longifolia



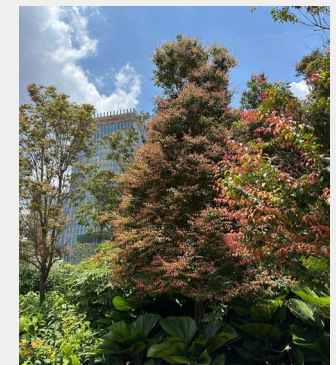
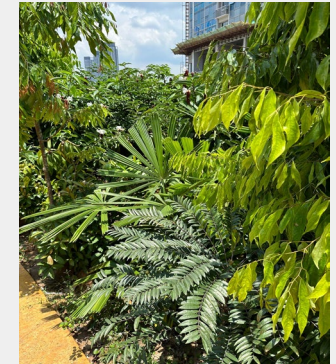
Eleocharis mastersii



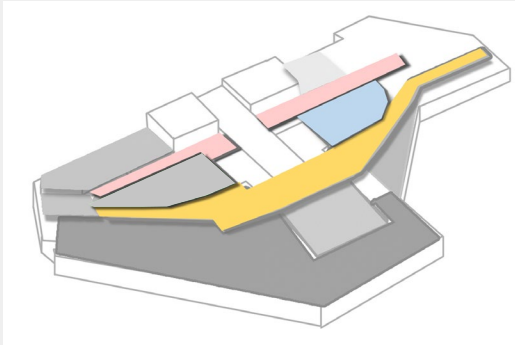
Costus speciosus



Baccaurea racemosa



PLANTING ZONES & KEY SPECIES



PARK AVENUE

Formal, open yet structured mass plantings of low groundcovers and grasses suited to growing in shallow soils.



Serissa japonica



Osmoxylon lineare



Melastoma malabathricum



Vitex rotundifolia



Mussaenda erythrophylla



Pseuderanthemum carruthersii

CITY AVENUE

Structured planting in layers for screening against the built form. Low planting centrally with tall accents and screening plants along the edges.



Areca catechu



Johannesteijsmannia lanceolata



Nephrolepis exaltata



Licuala peltata



Clerodendron paniculata



Epipremnum aureum

INSPIRATION GARDEN

Structured planting in layers for screening against the built form. Low planting centrally with tall accents and screening plants along the edges.



Kopsia arborea



Cassia x nealiae



Epipremnum aureum



Amesiodendron chinense



Caryota mitis



Clerodendrum paniculatum



Diospyros buxifolia



Justicia betonica



Pseuderanthemum andersonii



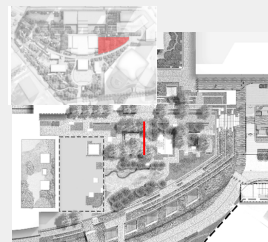
Alpinia mutica



Phyllanthus emblica



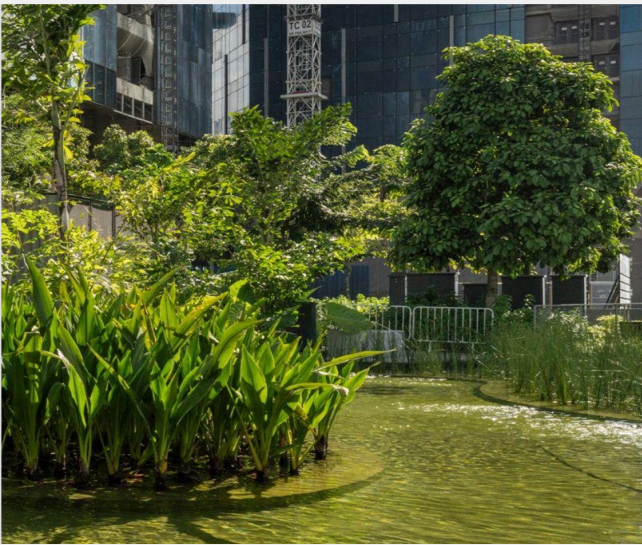
Nyctanthes arbor-tristis



SUSTAINABILITY INITIATIVES

THE Sustainable
SITES
Initiative®

TRX City Park has earned recognition as one of Malaysia's pioneering projects in sustainability with a **SITES Gold**, with full accreditation pending after one year of operation. **Sustainability initiatives** have been woven through the design and the construction process to be incorporated in the completed park. A clear legacy of this is illustrated through the park Planting designs, with the diversity and numbers of **locally indigenous plants**, the soils **insulating** the mall below, and plants providing **shade** to **cool** spaces below them. Evaporative cooling is also provided at the **garden fish pond**, which is stocked with native fish, and by the **Step Cascade Water Feature**. Throughout the park rainwater drainage from both planted and paved areas is captured by a **siphonic drainage system** which takes the water to a district recycling plant, where it is processed and brought back to the site for use as **grey water flushing** for the public toilets and **irrigation water** for the plants.





SUSTAINABLE CITIES AND REDUCED INEQUALITIES

The park contributes to Chapter 7 of Agenda 21 "Promoting sustainable human settlements development" in **integrating green spaces** into a high-density urban environment, **creating sustainable, accessible, and equity urban spaces** in Kuala Lumpur that is based on principles of connectivity.



In particular, the green park addresses **target 11.6** and **11.7 of SDG 11** (reduce the adverse per capita environmental impact of cities; provide universal access to safe, inclusive and accessible, green and public spaces) in its ample usage of **ethnobotanic plants, symphonic drainage recycling and irrigation system, and innately accessible zoning and walkways**.

This resonates also with target **10.2** of **SDG 9** (empower and promote the social, economic and political inclusion of all, irrespective of age, sex, disability, race, ethnicity, origin, religion or economic or other status)



QUALITY EDUCATION AND ECONOMIC GROWTH

The **educative elements** in the park (including planting signage, children's story, knowledge-sharing of indigenous plant uses) resonates too with **target 12.8** of **SDG 12** (ensure that people everywhere have the relevant information and awareness for sustainable development and lifestyles in harmony with nature) and **target 4.7** of **SDG 4** (ensure that all learners acquire the knowledge and skills needed to promote sustainable development).



The narrative of a **conserved Malaysian environment** that prospers with its modernisation and economic development speaks to **target 8.4** of **SDG 8** (Improve global resource efficiency in consumption and production and endeavour to decouple economic growth from environmental degradation).



TRX CITY PARK

Kuala Lumpur's People's Place