



Project Statement:

# **Shenzhen Gankeng Urban Field: The practice of pastoral aesthetics**

Location: Guanggong  
Area: 150,000 sqm



## An urban pastoral lifestyle destination within the Greater Bay Area.



### Project Statement:

Shenzhen's rapid development has turned a small fishing village into an international metropolis with 14 million population. Shenzhen has completed 100% urbanization in 40 years and has no rural areas left, which is very different from other cities in China.

Tapping into this distinctively "rural-less" nature of Shenzhen, we integrated the local Hakka culture to transform the site into farmland sceneries for experiencing rural Hakka life and wetlands for intimate contact with rainwater, crafting an urban farm experience. This provides a model for urbanization and developing cultural communities unique to Shenzhen, offering various lifestyle options.

Upon completion, the project enables convenient living for all, encouraging residents, tourists and the government to share a sense of upkeep. Hosting exhibitions, festivals and learning activities at the park helps strengthen cultural identity, attract more people and shape a new Shenzhen lifestyle.



# Masterplan

Wetlands: 30,000sqm

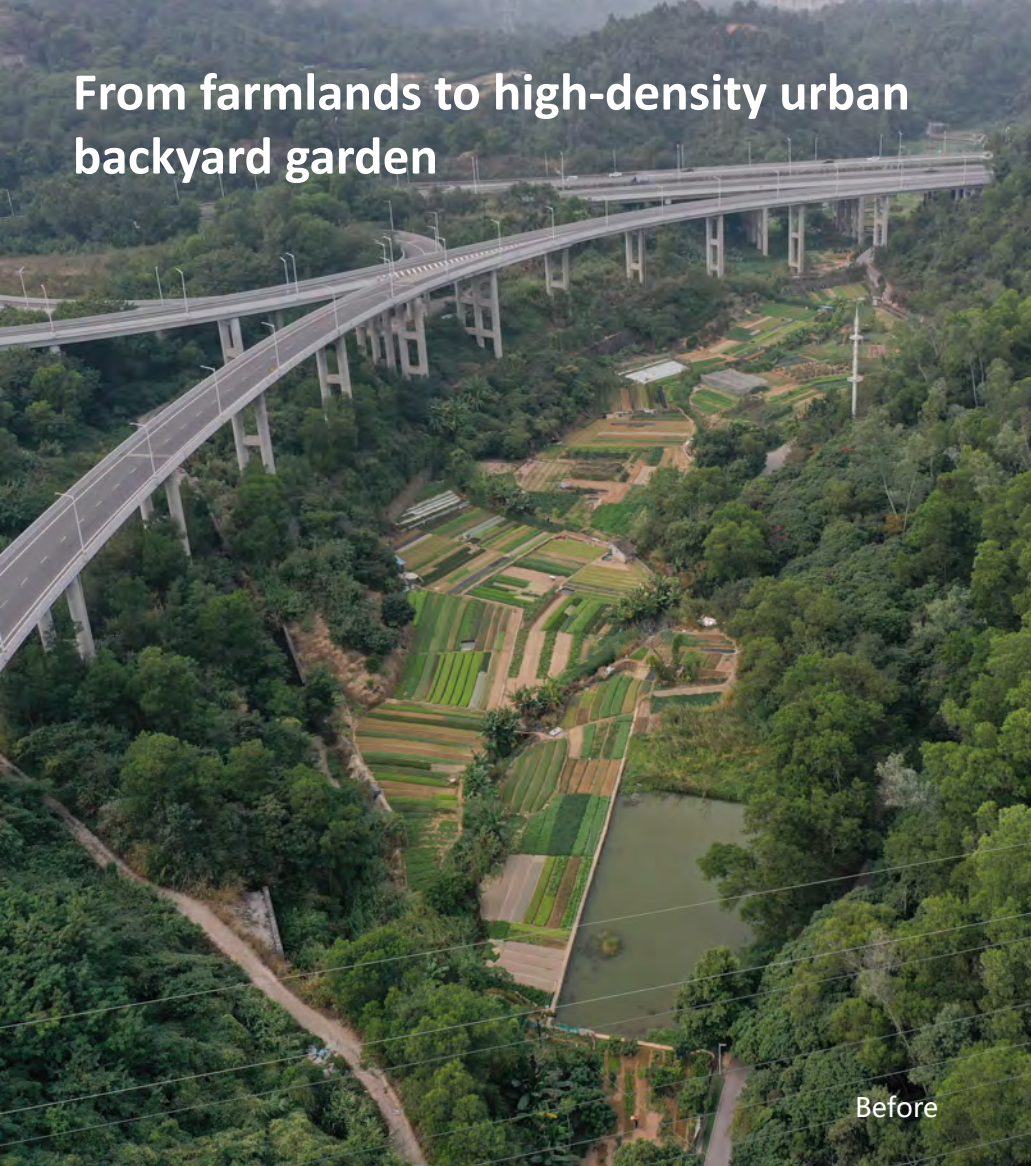
Field of Flowers: 60,000sqm



- ① Entrance Portico
- ② Lotus Pond
- ③ Emerald Bamboo Grove
- ④ Bamboo Pavilion Stage
- ⑤ Terrestrial Blossom Ocean
- ⑥ Maker's Place
- ⑦ Waterway Meanders
- ⑧ Lawn Arbor Pergola
- ⑨ Sunlit Lawn
- ⑩ Labyrinth greenhouse
- ⑪ Weaving Hill Courtyard
- ⑫ Blossom Patio
- ⑬ Wildflower Mountain Cabin
- ⑭ Campsite
- ⑮ Wetland Boardwalk
- ⑯ Tiger Pit Architecture
- ⑰ Camp Plaza



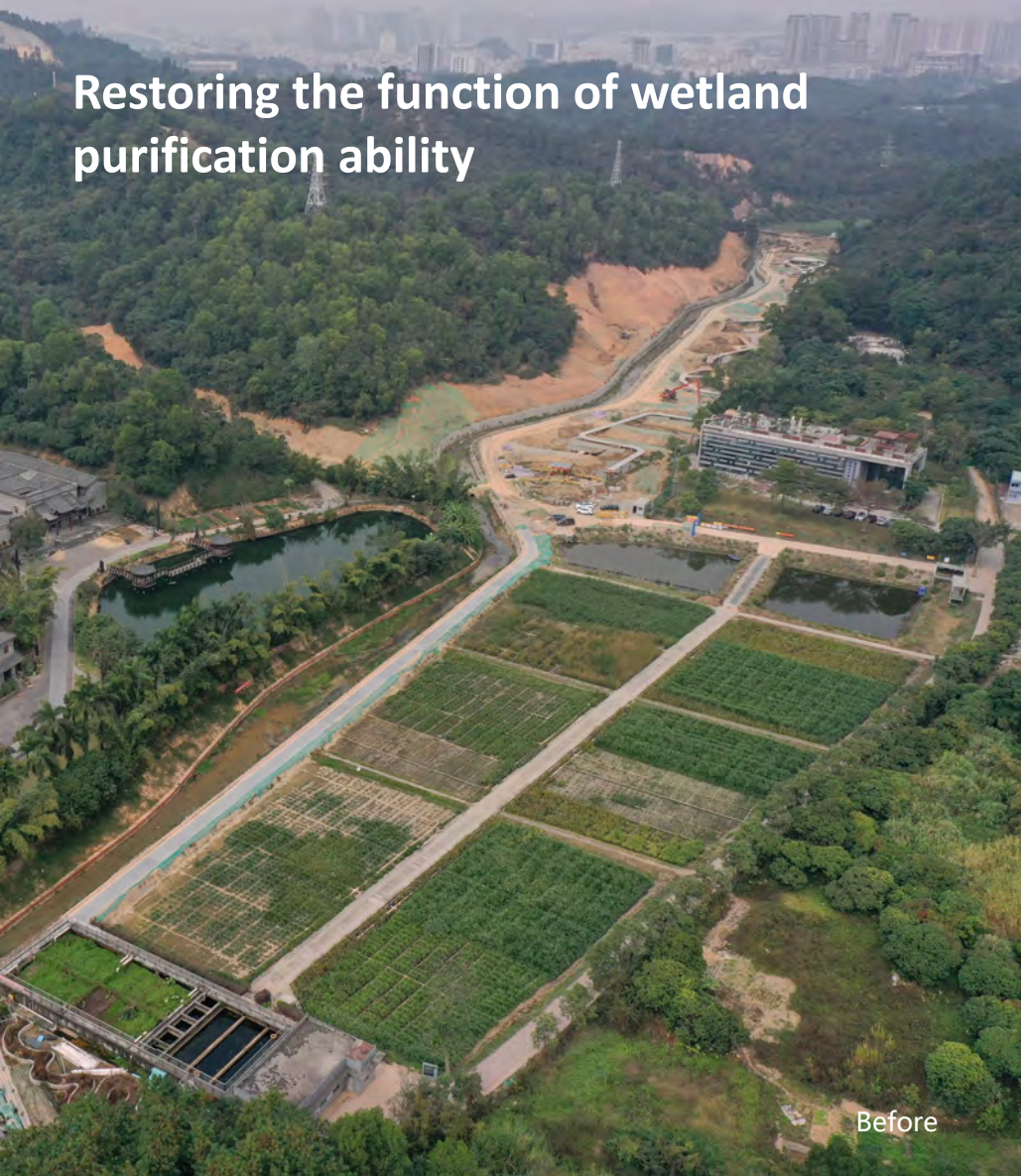
## From farmlands to high-density urban backyard garden



Before the renovation, the site is farmland for surrounding residents. The vegetation conditions of the surrounding mountains are relatively good. An expressway from the city passes through the base. We hope to make the best use of the surrounding mountain conditions and existing resources to transform it into a high-density urban backyard garden.



## Restoring the function of wetland purification ability



The site was a surface flow wetland system before the renovation, but it has lost its wetland function due to lack of maintenance and management. The surrounding high quality mountain condition is Shenzhen's rare green forest resources.



# 1. Preserve the authenticity of rural landscapes

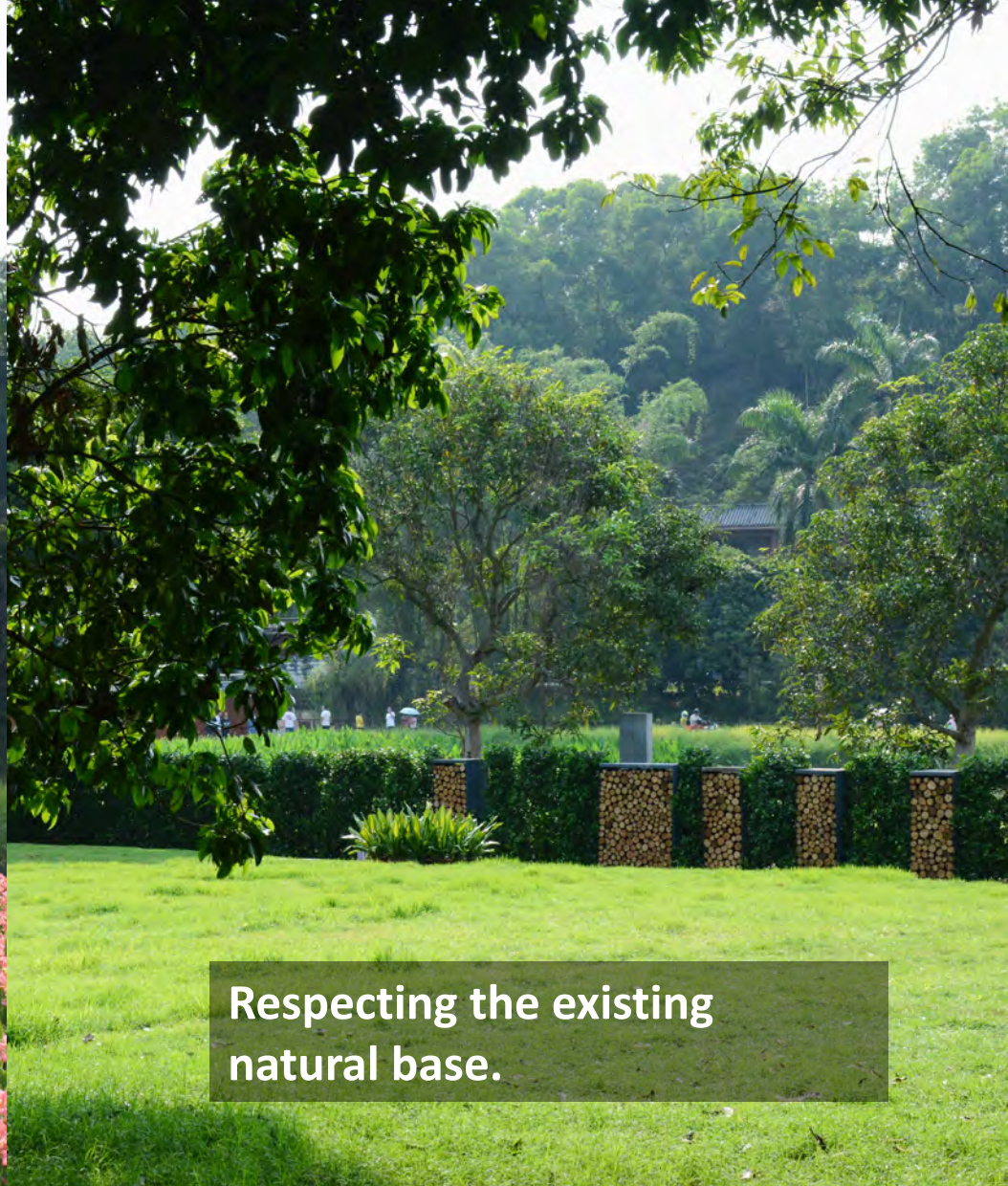


The original landscape base and natural habitat of the site are preserved intact.

Natural vegetation, including surrounding trees and shrubs, original farmland water systems, original riverbank trees, etc. are fully retained and repaired as the cultural memory of the site.

In the design of buildings and structures, Hakka architecture and bamboo weaving techniques are taken as inspiration.

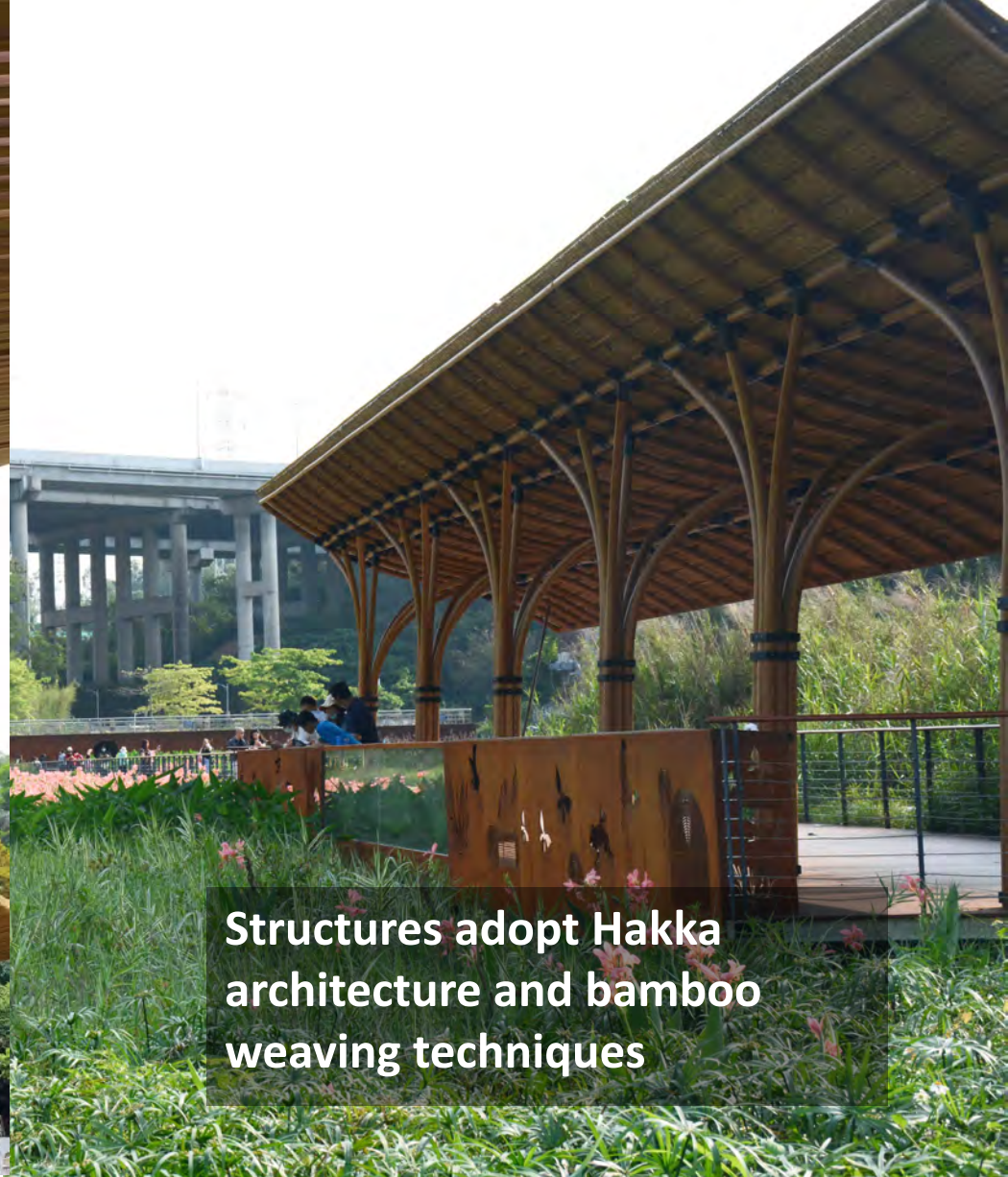




**Respecting the existing  
natural base.**

The design fully respects the existing trees, with not a single tree transplanted. The new landscape seamlessly connects with the original natural conditions, presenting an authentic natural appearance.





**Structures adopt Hakka architecture and bamboo weaving techniques**

Weaving methods are adopted as much as possible through light intervention, combined with material elements that conform to the local temperament, to create a new space that is both beautiful and environmentally friendly, forming a unified park impression with a uniform style in the whole area.



## 2. Productive and dynamic urban fields



On the basis of retaining the original local vegetation, productive crops have been introduced on the farmlands.

The meadows are covered with low-maintenance wild chrysanthemums, which are good medicinal materials. At the end of the flower valley, a maze flower room is set up with indoor coffee plants, greenhouse flowers and other activities. More than 30 kinds of plants are planted around the flower room.





**Planting large amount of  
productive crops.**

On the farmland, there is crop rotation in four seasons: rapeseed flowers in spring, sunflowers in summer and autumn, and rotation of gorgeous herbaceous wildflowers.





## Crop rotation of gorgeous herbaceous wildflowers .

By guiding natural drainage through the terrain of the fields, properly planning planting time and density, and accurately controlling the color and specifications of seedlings and flowers, we can achieve a sea of flowers landscape with flowers to appreciate all year round and abundant changes.





**Providing cultivation  
collocations of various plants.**

We have adopted a low-cost landscaping approach by sowing grass seeds. The diverse plant combinations provide Shenzhen citizens with an urban backyard garden where they can heal and enjoy nature in peace, which is quite rare under the conditions of a high-density city.



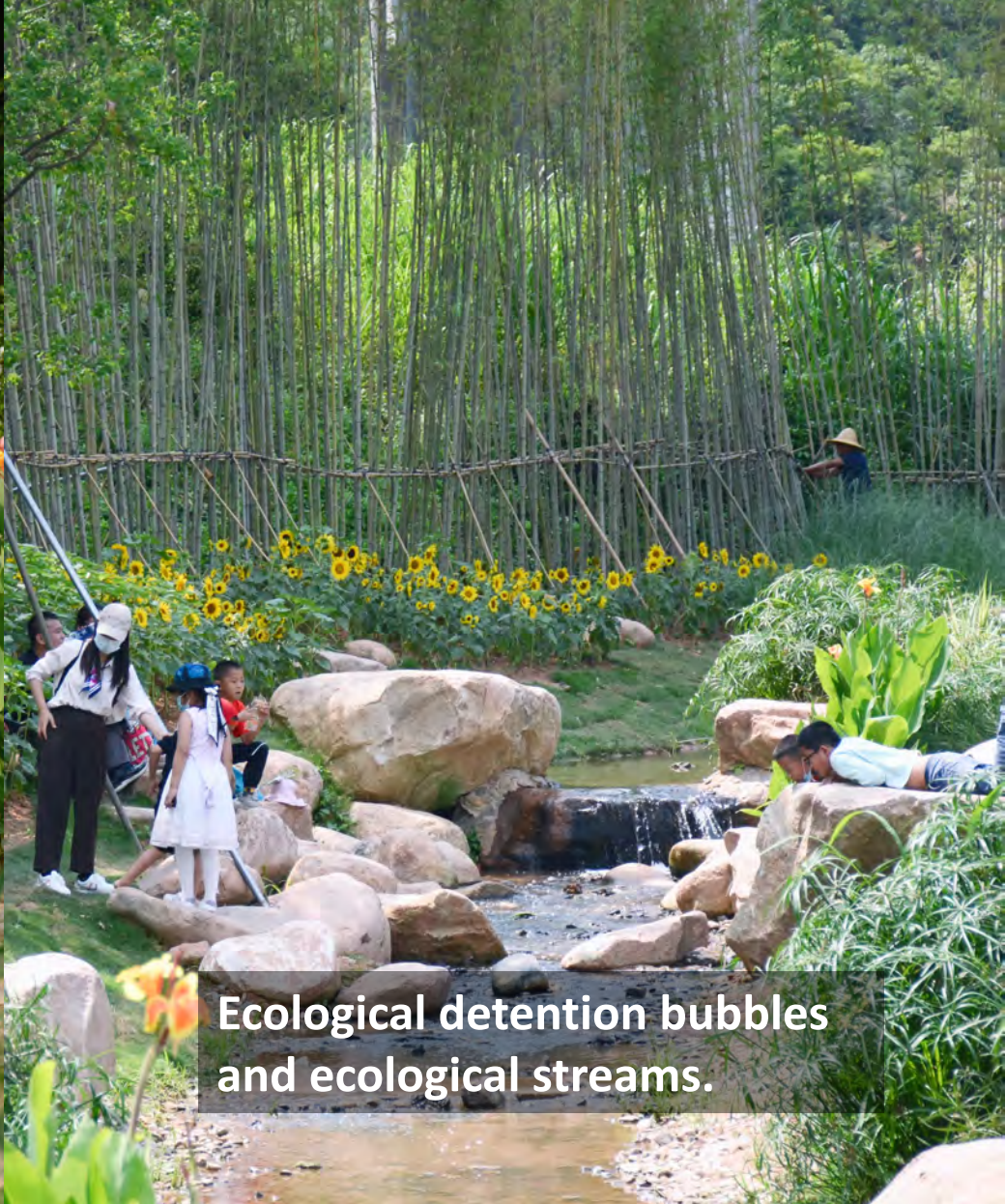
# 3. Natural sponge system



We work with experts from Shenzhen Institute of Environment and Ecology to adopt a new patented technology from the institute, using the second generation ultra-high efficiency artificial wetland purification technology.

It can purify more than 13 tons of sewage per day, with a hydraulic load increased by 3 times and pollutant removal ability increased by 30% compared with the first generation technology. Basically, there is no clogging and other problems, and the abandoned wetland comes to life again.





**Ecological detention bubbles  
and ecological streams.**

The original natural surface runoff system in the Blooming Valley venue is completely retained. An ecological stream with natural morphology is created in the center of the venue and eventually collects in an ecological detention bubble reproduced from the existing fish pond, intercepting rainwater in the venue and irrigating farmland and moistening the soil in the venue. It also provides a place for urban children to fish, catch shrimp and get close to nature, treating the nature deficiency syndrome of urban children.





**Restoring the function of  
wetland purification ability.**

The retained waterfront trees have re-engaged in dialogue with the fish pond. In addition to reshaping the sponge system of Blooming Valley, the ecological wetland will regain its water purification function from the existing abandoned wetland. The wetland area is about 2 hectares.



# 4 ● “practical”



The early involvement of the project planning and operation team is very important. Adequate space and logistical conditions can be reserved in the design stage to create a "practical" park that can be operated healthily in the follow-up and avoid excessive financial burden.

Unlike most rural projects, this project aims at urban white-collar workers, elite women and art lovers instead of the conventional parent-child family groups. Their high requirements for aesthetics, quality and culture are fully reflected in the design and presentation of the rural areas.





**The intervention of operation provides more life scenarios for citizens.**

A series of theme displays with art, culture and fashion imprinted in their genes, using exquisite flower fields as the background, greatly meet the needs of consumers for outdoor experiences and social activities. Providing sufficient water and electricity interfaces and pre-setting scene layouts in hardware meet the requirements of being "practical" better.





**At present, the park has achieved 100% building rental rate.**

After the project was completed, more than 30 fashionable and trendy activities were held, including tent camp festival, flash coffee shop, summer theme art installation, unplugged music festival and creative life market. The popular activities have created diverse economic value. Venue rental and event hosting have brought continuous blood-making function to the project. The huge flow of people brought by the project has also provided more business opportunities for vendors.



# 5 Environmental interpretation and education system



On a small scale, the park is endowed with warmth and fun. We have designed a complete interpretive system for popular science of the site and maximized the performance of the original nature of the scene.





**Vivid visual identity and lively education system.**

Continuing the core spirit of the pastoral wild fun project, applying the minimalist concept to subtract the design, the large scale of the logo system highlights the recognizability of the park, such as: maze garden greenhouse, wetland park, lawn theater, etc., to guide tourists to more experience space.