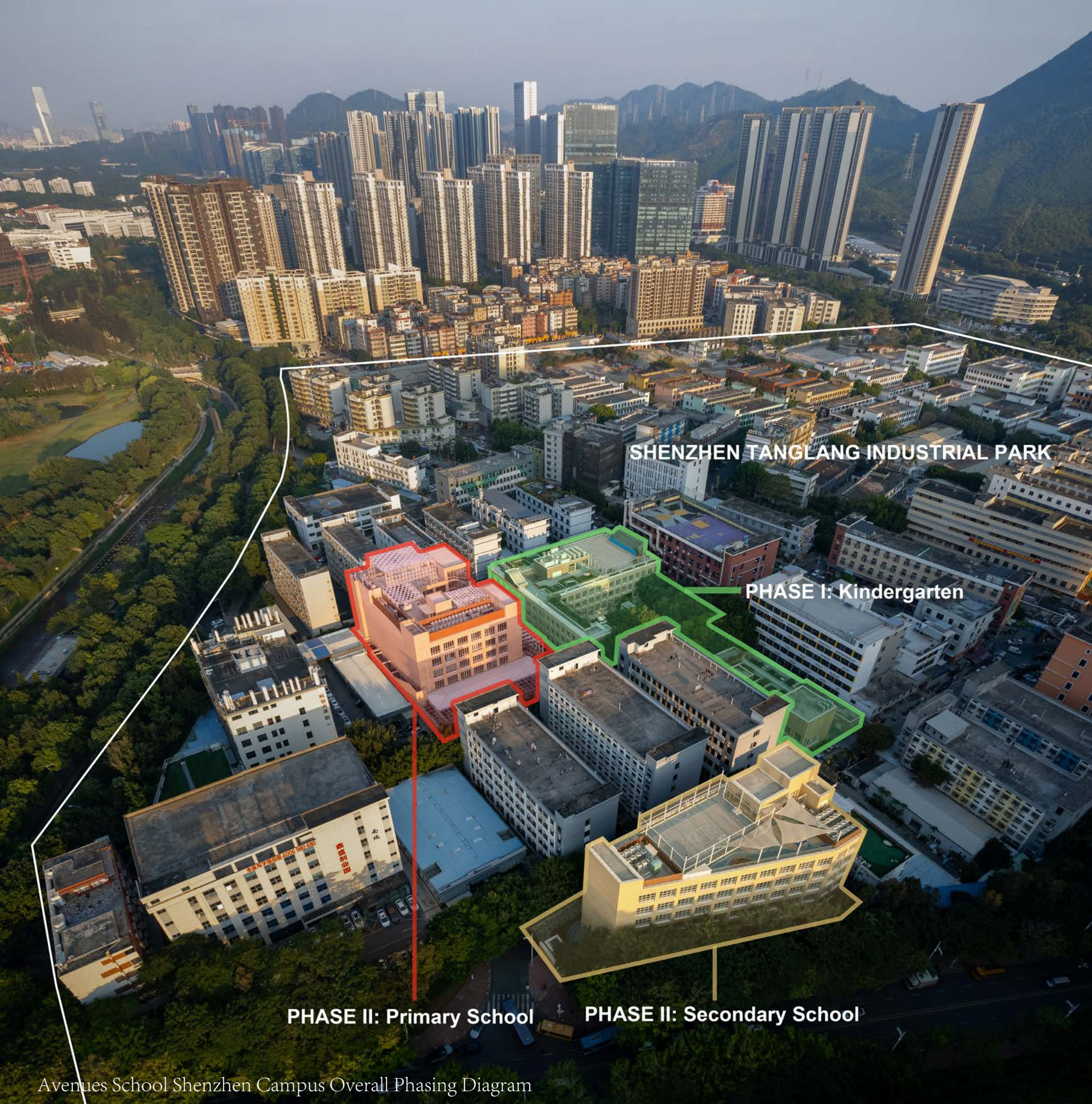


An aerial photograph of a modern school campus at dusk. The central building is a multi-story structure with a warm, orange-brown facade and large windows that are illuminated from within. It features a central courtyard with a basketball court and a blue running track. The building is surrounded by other modern structures, including a large building with a white, grid-like facade and another with a grey, textured facade. The surrounding area includes trees, a road with cars, and other urban buildings. The overall atmosphere is modern and vibrant.

From An Old Industrial Park To A Modern Campus

AVENUES SHENZHEN PRIMARY AND SECONDARY SCHOOL



Avenues World School Shenzhen Campus is unique because it utilizes five old buildings in Shenzhen Tanglang Industrial Park and transforms them into a modern campus for kindergarten, primary and secondary schools.

The biggest challenge faced by us as the landscape architect of Avenues Primary and Secondary School is how to provide the playground, running tracks, sports courts etc. in an old industrial park to meet the school and Shenzhen Educational Bureau's requirements. Due to the extremely limited amount of outdoor space between the new school buildings and the old adjacent neighboring buildings, this is unlikely to happen.

In response, all the possible spaces on the ground floor between the school building's exterior wall and its neighboring buildings or perimeter fences, the flat roof of all the school buildings are fully utilized to create athletic tracks, sports courts and equipment play areas. Our design follows the theme of creativity, simplicity, naturalness, and fun. It adapts to existing conditions and transforms waste spaces into welcoming and elegant wonderlands that aim to stimulate children's exploration desires.

PHASE II: Primary School

PHASE II: Secondary School

Avenues Primary School



Old Industrial Park Building Before Renovation



Avenues Primary School Building After Renovation

Avenues Primary School

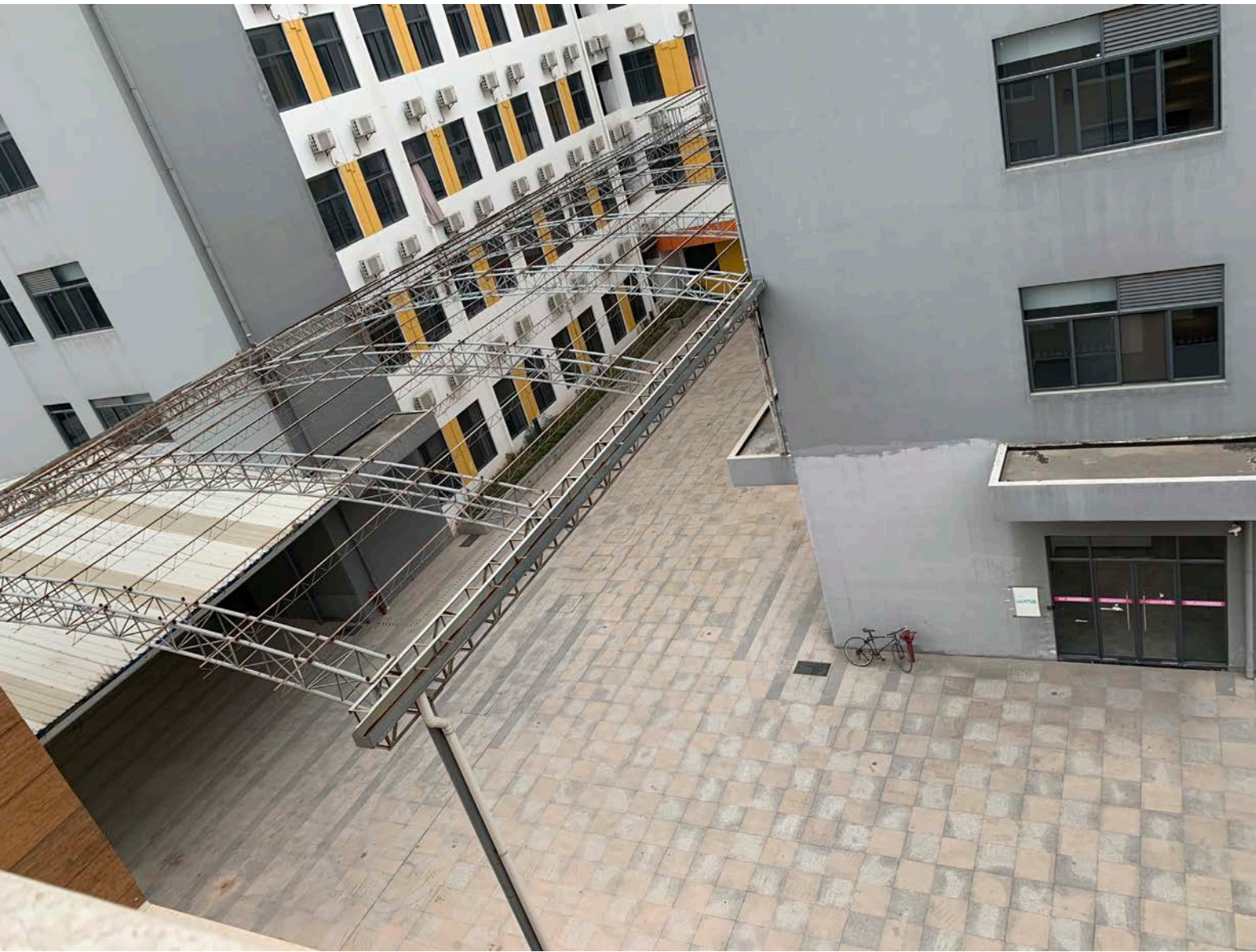


Old Industrial Park Building Before Renovation



Avenues Primary School Building After Renovation

Avenues Primary School



Old Industrial Park Building Before Renovation

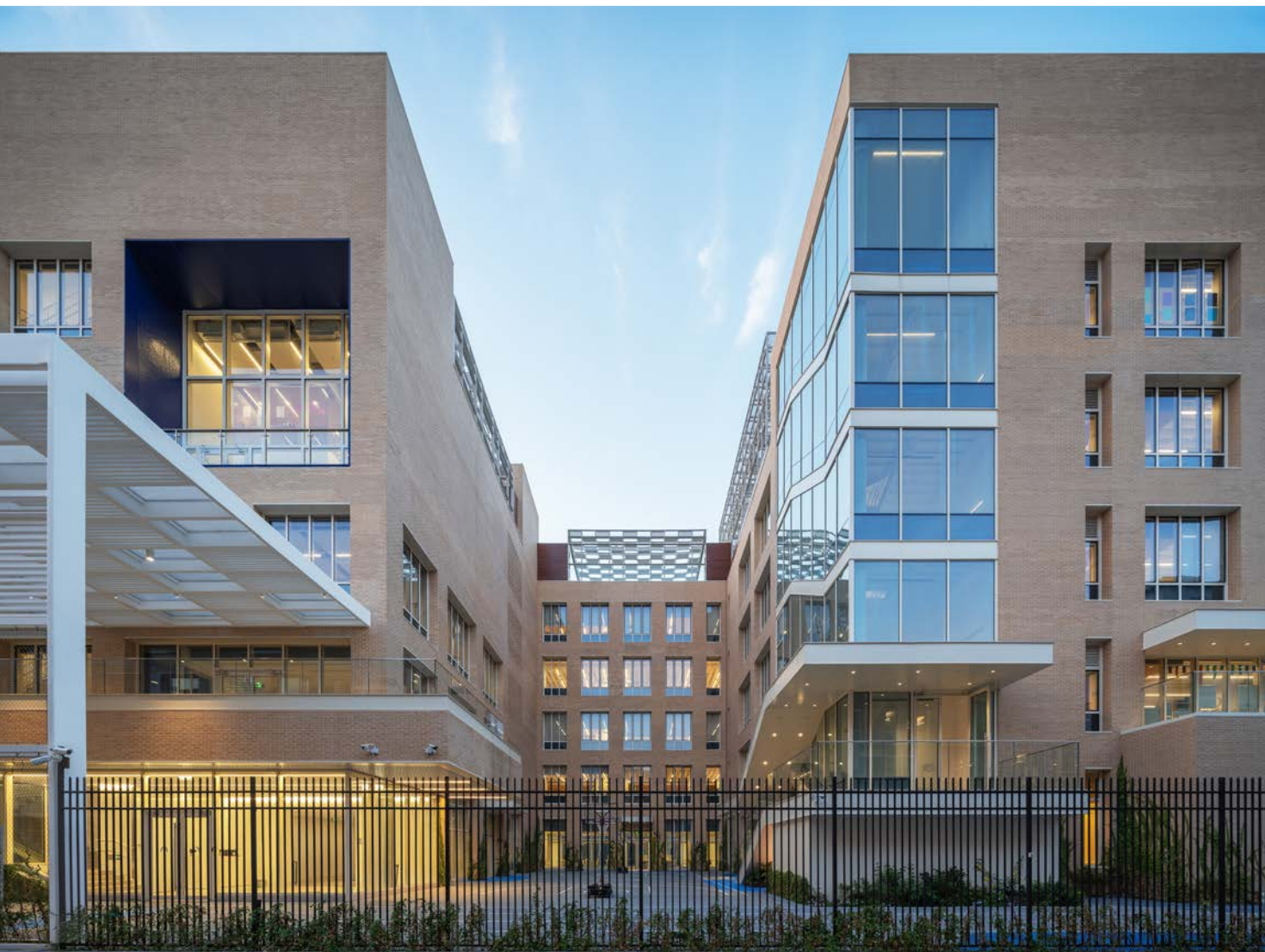


Avenues Primary School Building After Renovation

Avenues
Primary School



Avenues
Primary School



Avenues Primary School



ENTRANCE PORTAL

The south side of the primary school is a 4-meter wide one-way street with a narrow sidewalk where the school's main entrance is located. An entrance portal using plain concrete with a graphic logo of Avenues' letter "A" gives people an inspiring experience every day when entering and leaving the school.



Avenues Primary School



CLIMBING WALL

On the north side of the primary school, there is a 3.5-meter-wide linear space left between the primary school's main building and the perimeter fence wall. The landscape design utilized the concrete perimeter wall and transformed it into an attractive climbing wall. Students can explore the climbing space adjacent to the student canteen every day during recess time of school life.

Avenues
Primary School



Avenues Primary School

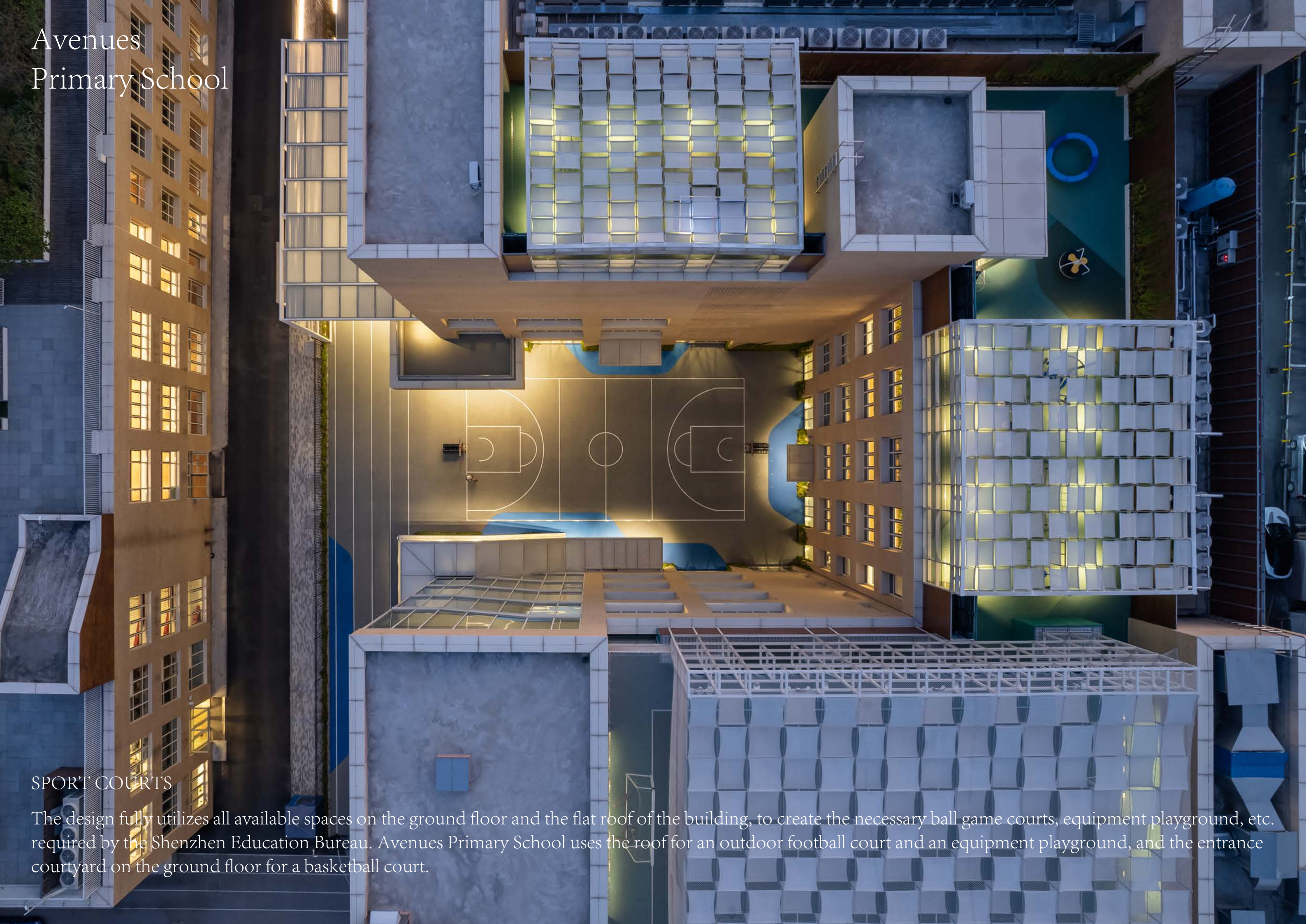
RUNNING TRACK

To meet Shenzhen Education Bureau requirements, a 200-meter loop track and a 100-meter straight track are set up around Avenues Primary School. The western and northern section of the loop track is completed by raising the ground floor of the building to allow the runway to pass through the bottom of the building. The eastern section of the loop track utilizes Langye 4th Road. It extends on both sides to form a 100-meter straight runway.

Avenues Primary School

SPORT COURTS

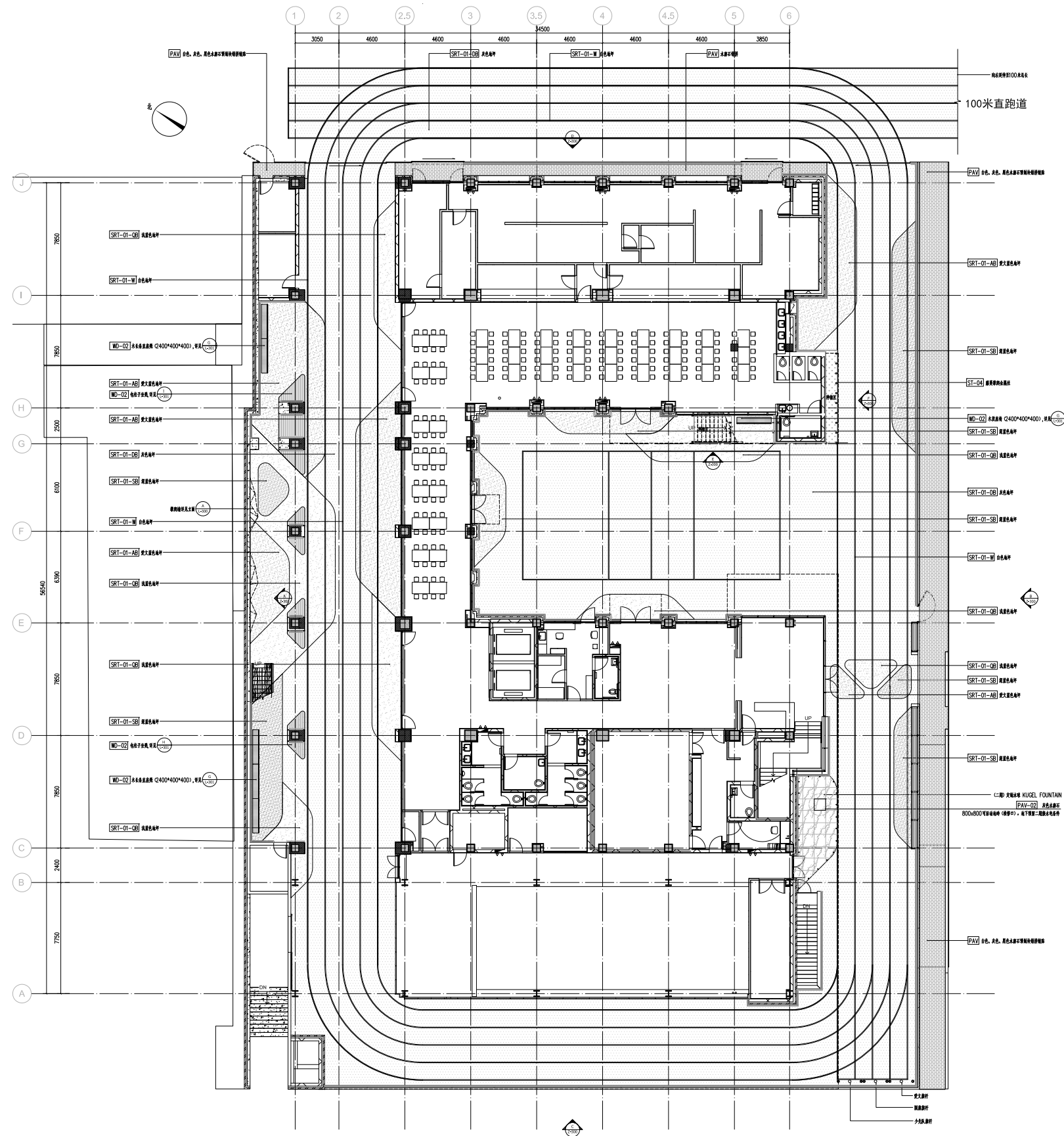
The design fully utilizes all available spaces on the ground floor and the flat roof of the building, to create the necessary ball game courts, equipment playground, etc. required by the Shenzhen Education Bureau. Avenues Primary School uses the roof for an outdoor football court and an equipment playground, and the entrance courtyard on the ground floor for a basketball court.



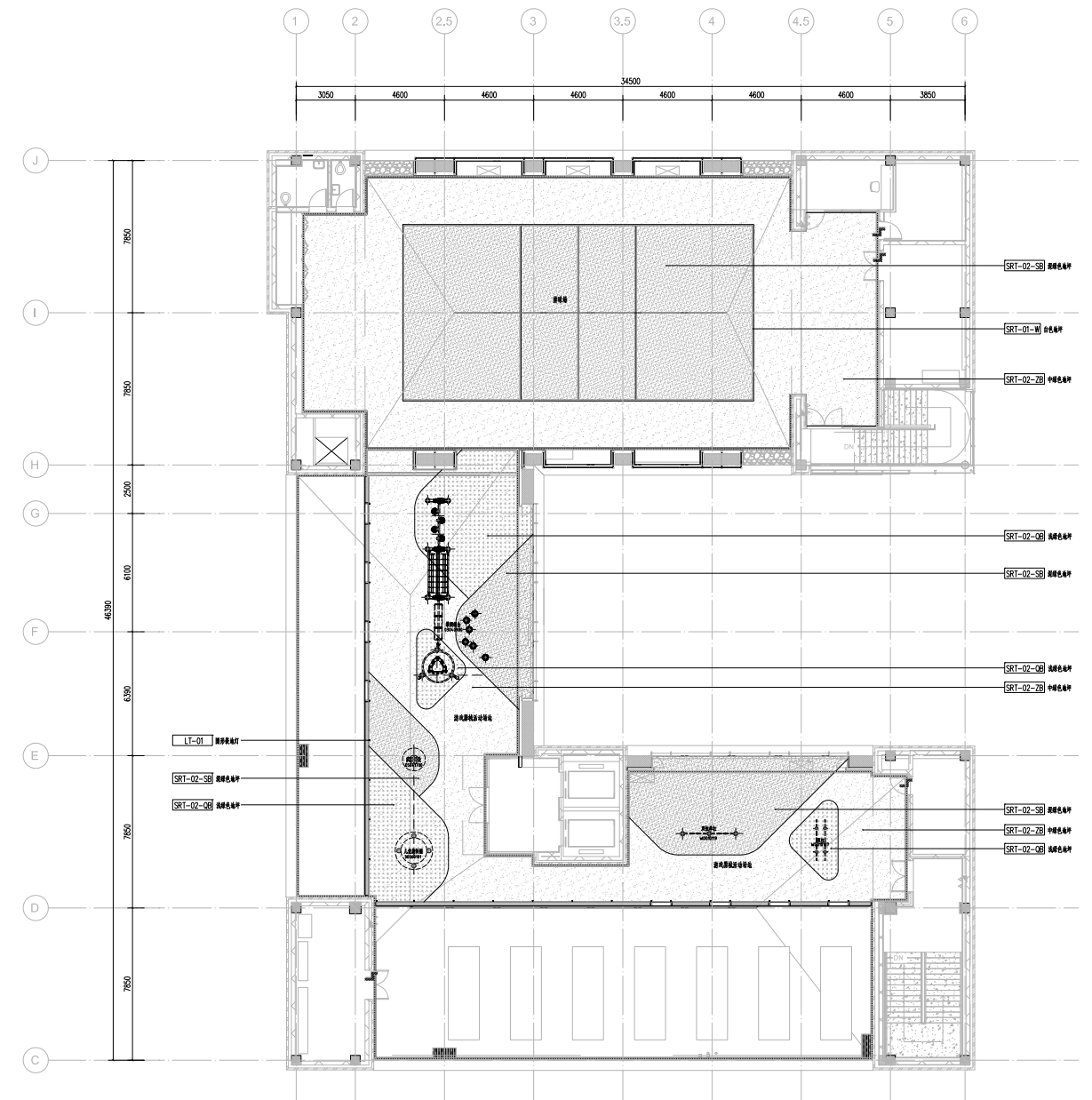
Avenues
Primary School



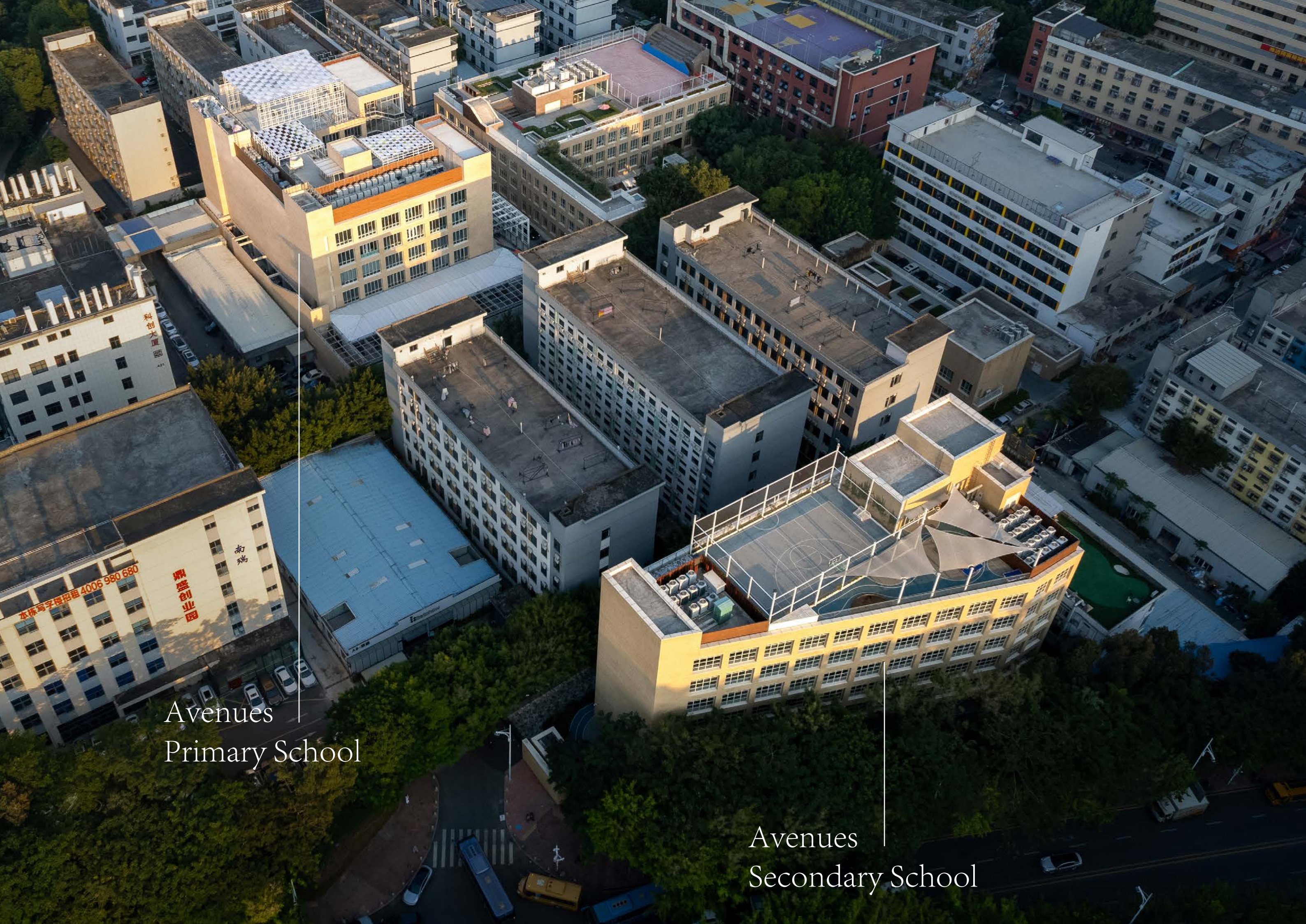
Avenues Primary School



Landscape Ground Floor Plan - Technical Drawing



Landscape Roof Plan - Technical Drawing



Avenues
Primary School

Avenues
Secondary School

Avenues Secondary School



Old Industrial Park Building Before Renovation



Avenues Secondary School Building After Renovation

Avenues Secondary School

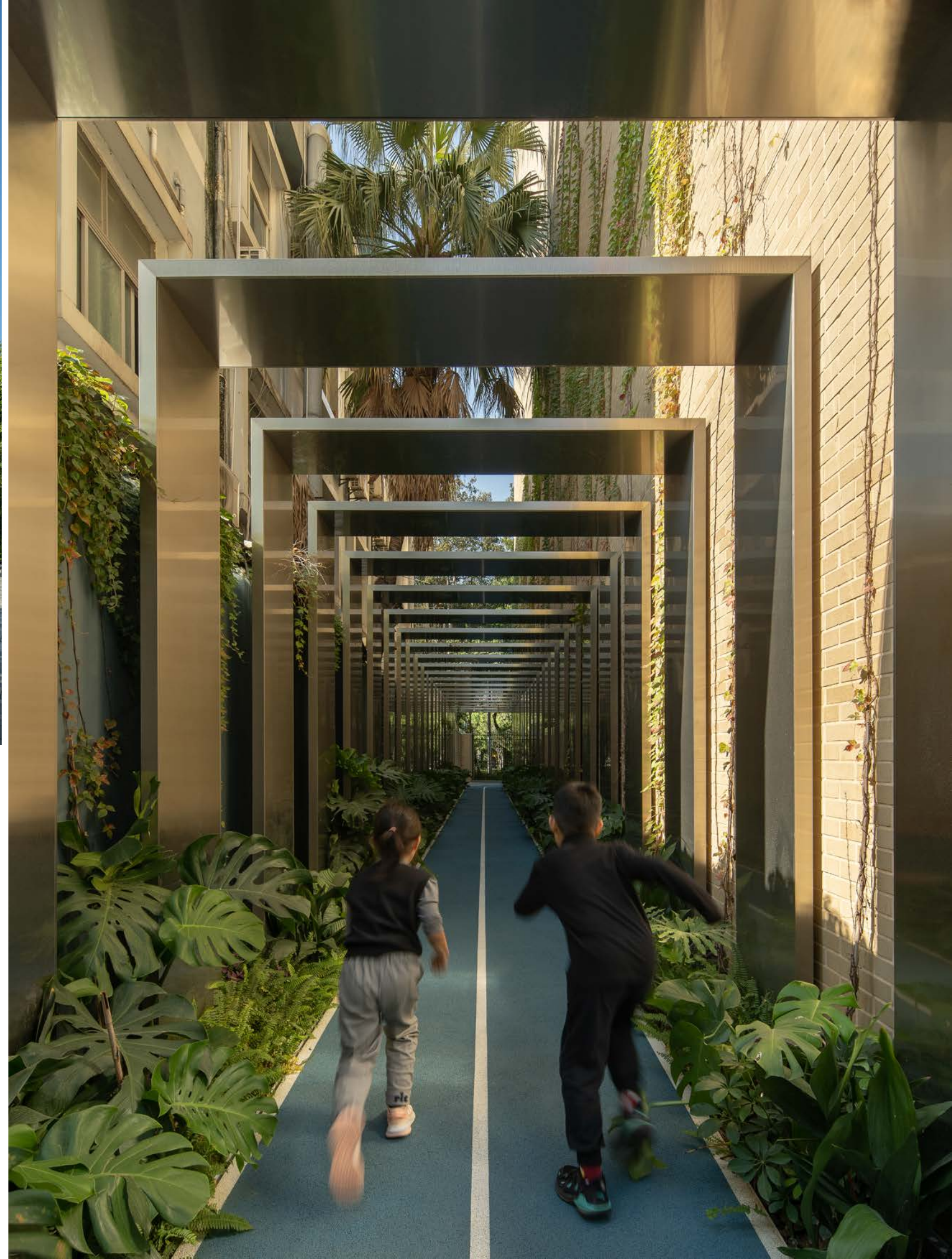


Avenues Secondary School



TIME TUNNEL

On the south side of the secondary school, there is a long and narrow space with a width of 3 meters and a length of 30 meters between the school building and the neighboring building. The landscape design takes full advantage of its spatial characteristics, introduces a simple and abstract U-shaped repetitive structure made of silver brushed stainless steel plate, and creates a "Time Tunnel" with light and shadow, providing children running in it with a unique space experience that can stimulate their exploration desire

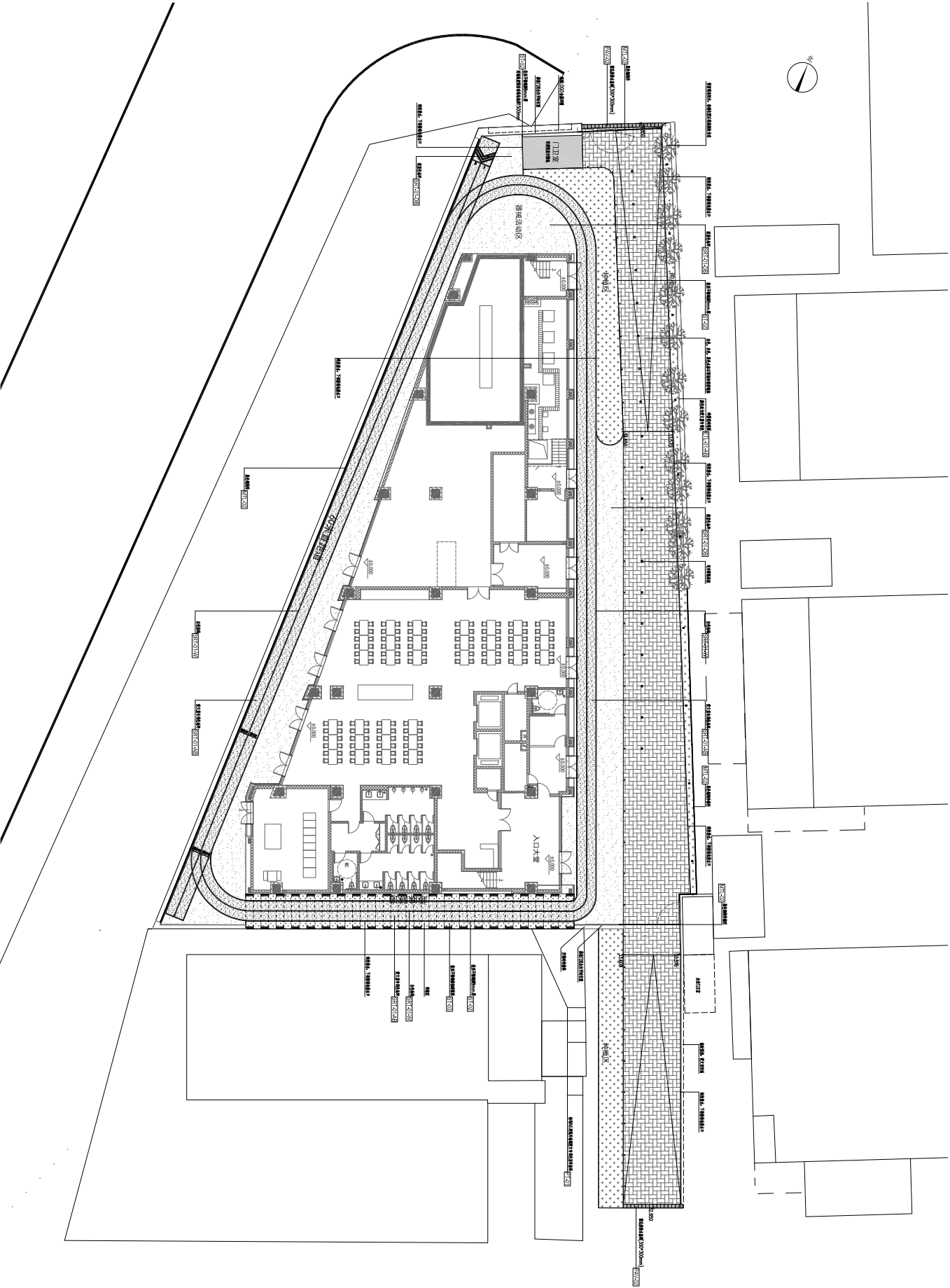


Avenues Secondary School

SPORTS FACILITIES

Avenues Secondary School utilizes all available spaces on the ground floor to create a 150-meter loop track and a 60-meter straight track. It also creates an outdoor volleyball full court/basketball half court plus an outdoor activity area on the roof. For the rooftop outdoor playground, the introduction of a shading system is also a major design feature, aiming to provide students with all-weather comfortable outdoor experiences in Shenzhen.

Avenues
Secondary School



Landscape Ground Floor Plan - Technical Drawing

