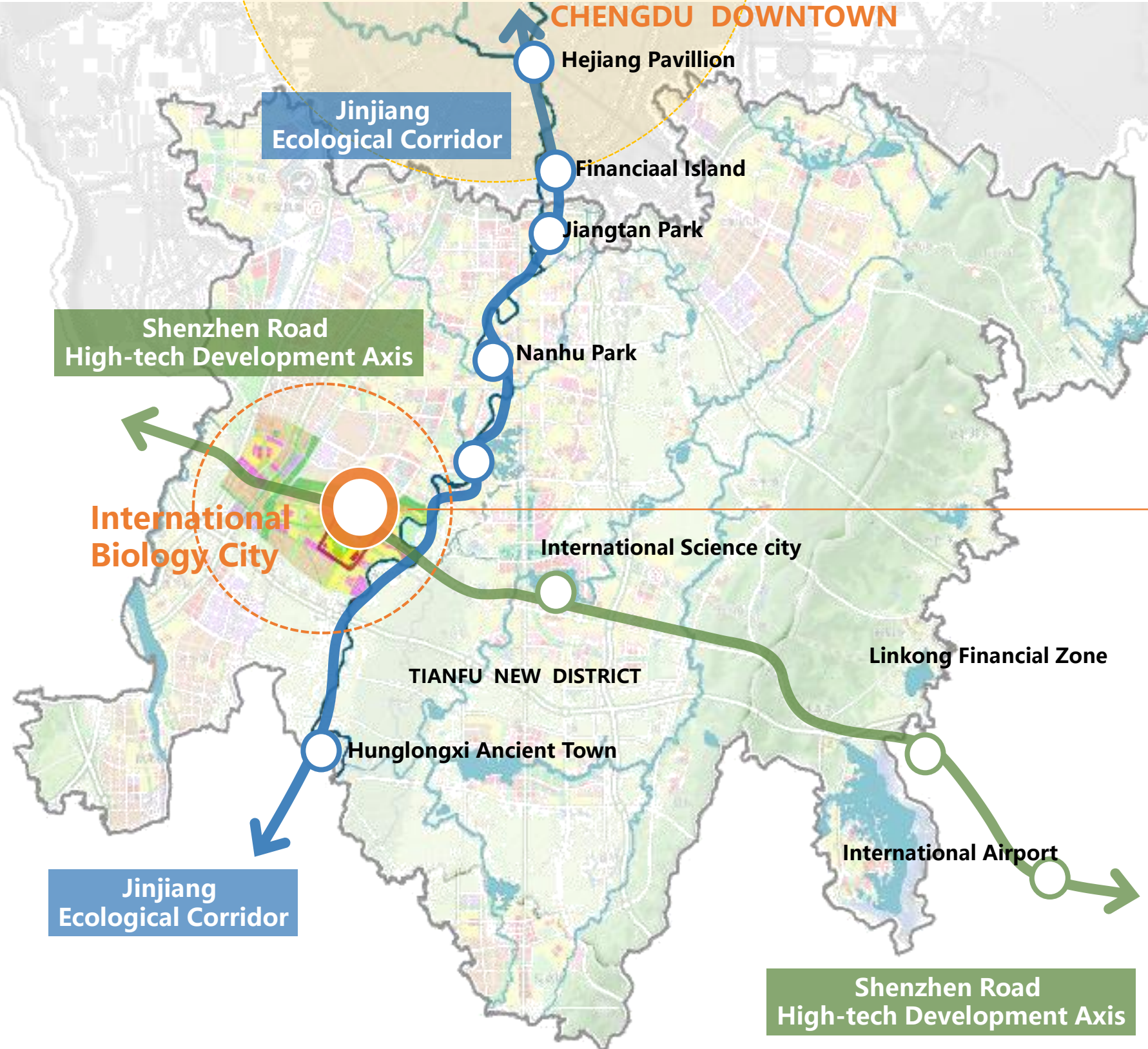


An aerial photograph of Yong'an Lake City Forest Park. The image shows a large, calm lake on the left, surrounded by lush green trees and grass. A winding path or bridge with orange railings curves through the park, leading towards the lake. In the background, a tall electricity pylon stands amidst the dense forest. The overall scene is a serene and well-maintained urban park.

YONG' AN LAKE CITY FOREST PARK



Location Project

Yong 'an Lake City Forest Park was originally a Yongan Reservoir. It is located in the central area of Chengdu International Biological City. It has a total of 206 hectares and 21 hectares of the water area with a rare virgin forest in Chengdu. It is not only an important node in the urban green corridor, but also an important function of the future central park in this new district to undertake urban green lungs and natural oxygen bars.

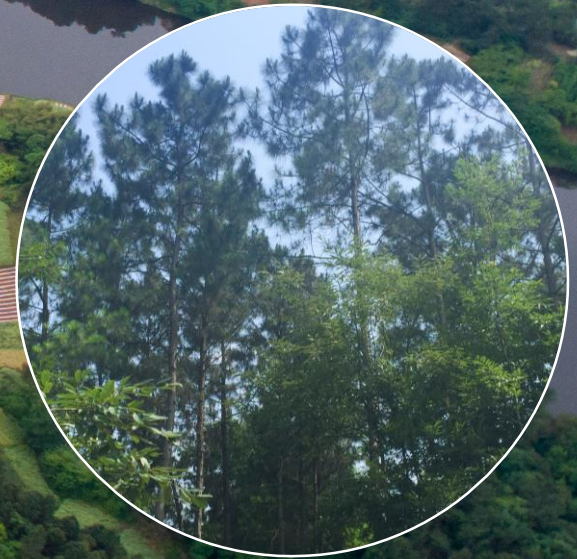


Context Investigation

When our team explored the site many times a few years ago, we were deeply impressed by this unique original landscape: Yong'an Lake has a rare landscape pattern in Chengdu Plain, surrounded by shallow hills of dense forests and reservoirs, and enjoys unique natural resources.



The space of the water bay is full of twists and turns, make the uneven lakeshore is full of joy.



The last primeval forest in Chengdu, with a natural pine forest composed of tens of thousands of pine trees.

Project Statement

Yong'an Lake City Forest Park is located in the core area of Chengdu International Bioscope. In the future, it will be used as the central park of this area to undertake the function of urban forest green lungs and natural oxygen bars. Relying on superior natural resources, through the principle of low interference and low intervention landscape renovation principles and activity implantation, a balance between ecology and landscape is constructed from different levels such as spatial scale, landscape form and artistic style. The ecological leisure display space of urban forests meets the needs of diverse people's activities, so that the Chengdu style "ecology" and "life" have a wealth of compound reactions in the good ecological context of Yong'an Lake.

Developing with a low impact model
Cultivate the sentiment of the context
Showcasing the most beautiful native scenery of Yong'an lake forest park

Overall Plan

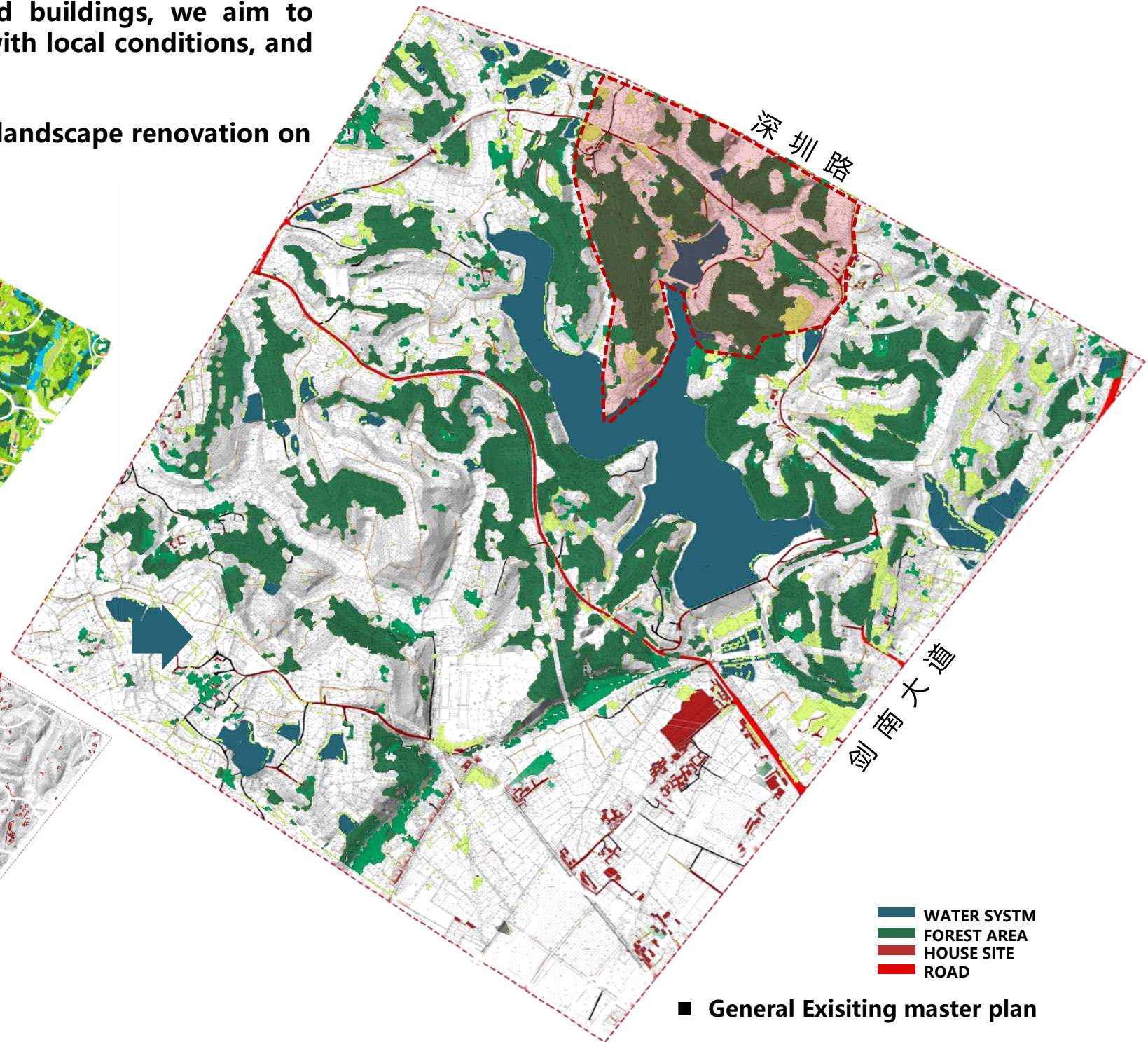
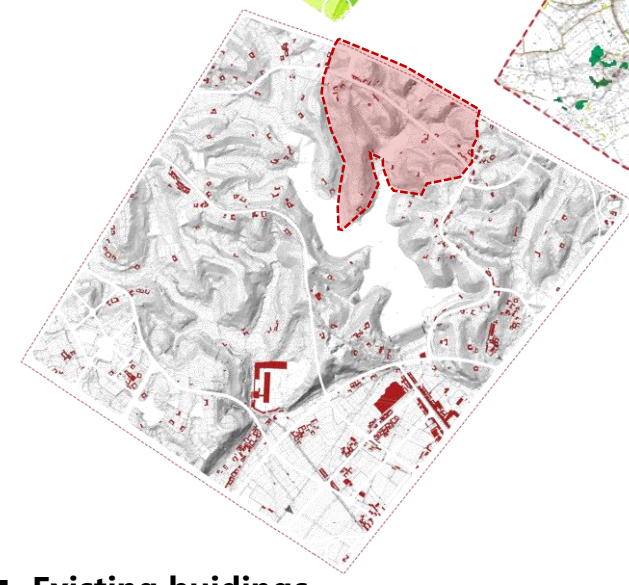
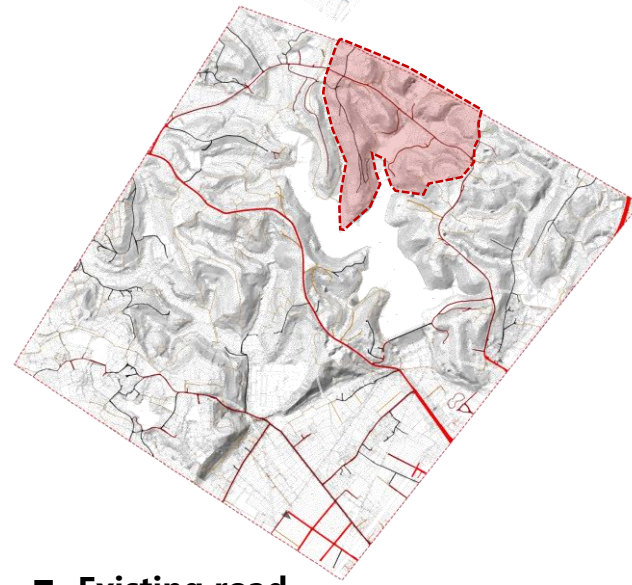
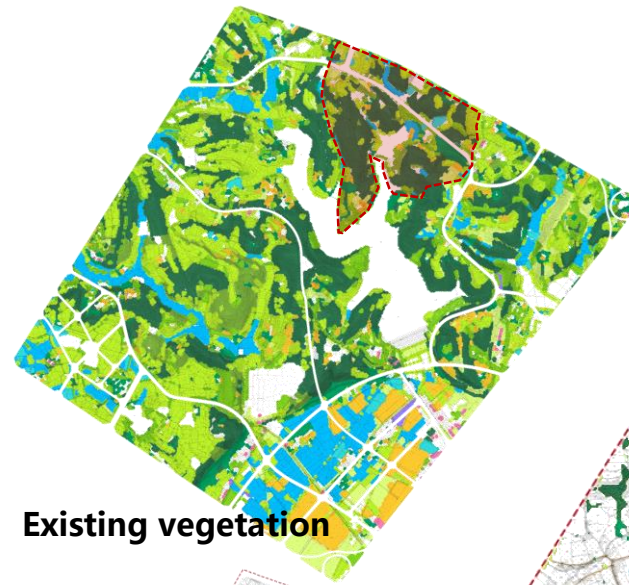
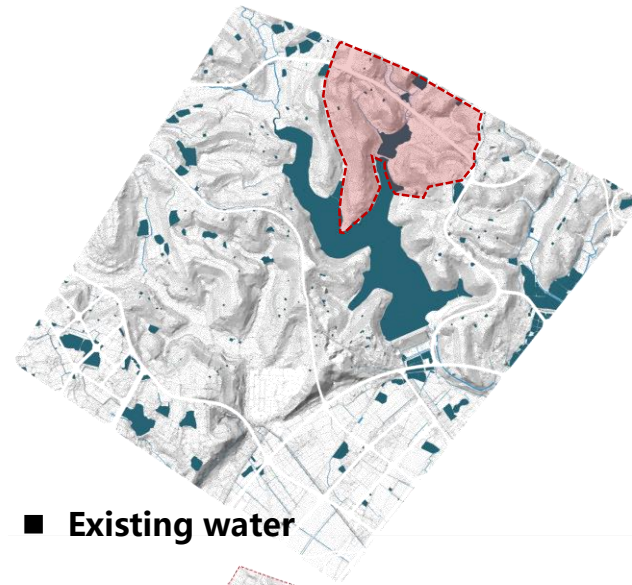
Design Time: 2016
Time for completion : 2021
Project Area: 56hectares (Demonstration Area)



Low interference and light intervention

Starting from the four elements of roads, vegetation, water and buildings, we aim to establish a balance between ecology and landscape in accordance with local conditions, and create an ecological and cultural exhibition space in the city.

Ensure the establishment of the principle of minimal intervention in landscape renovation on the basis of existing high-quality ecological bases.



Low Interference and Light Intervention

Road

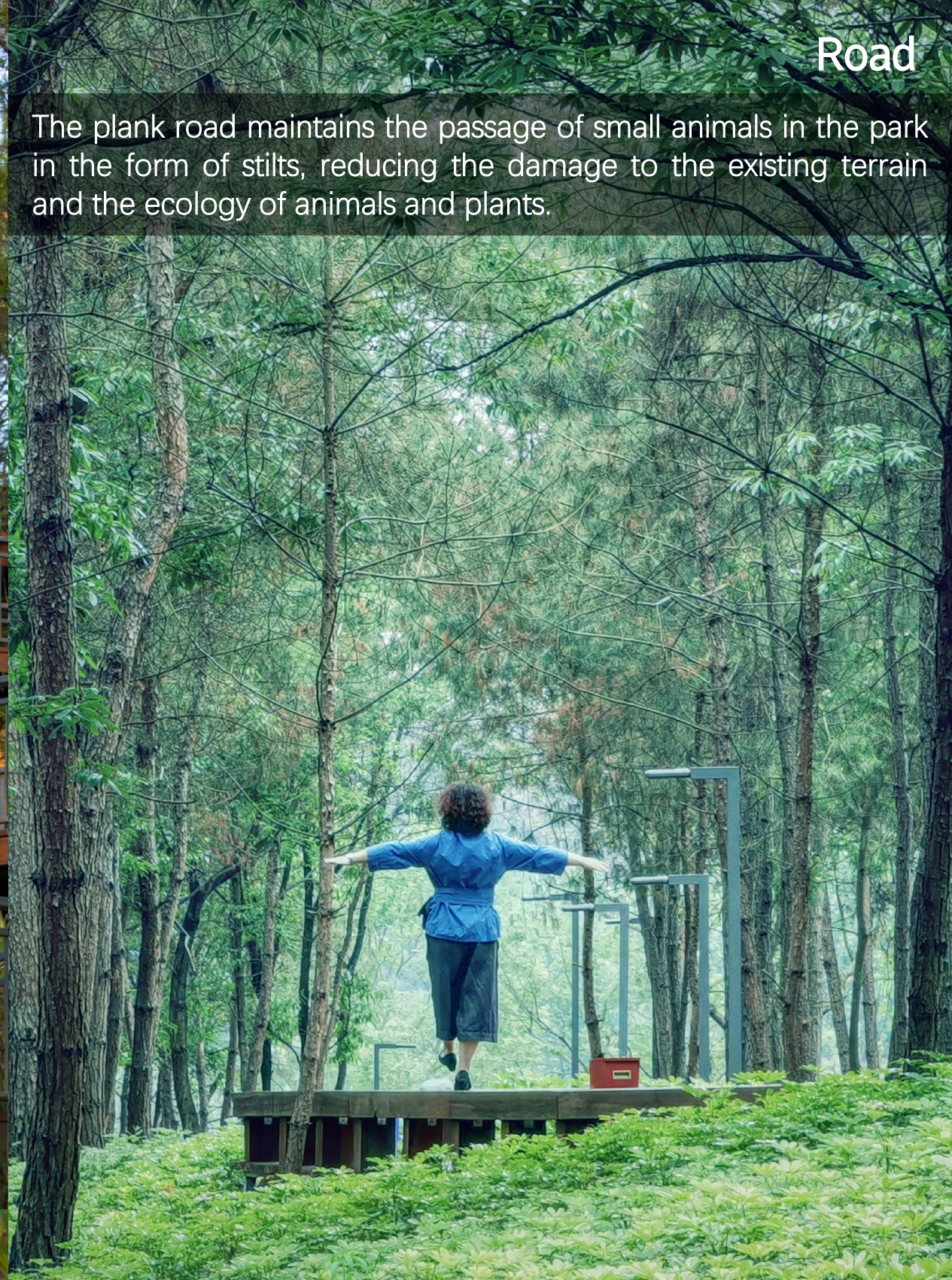
The road design fully respects the current roadbed, the utilization rate reaches 95%, and the earthwork volume of road engineering is close to 0.

Low Interference and Light Intervention



The planning route is based on the mountain and avoids the existing vegetation, accounting for 42% of all tour routes.

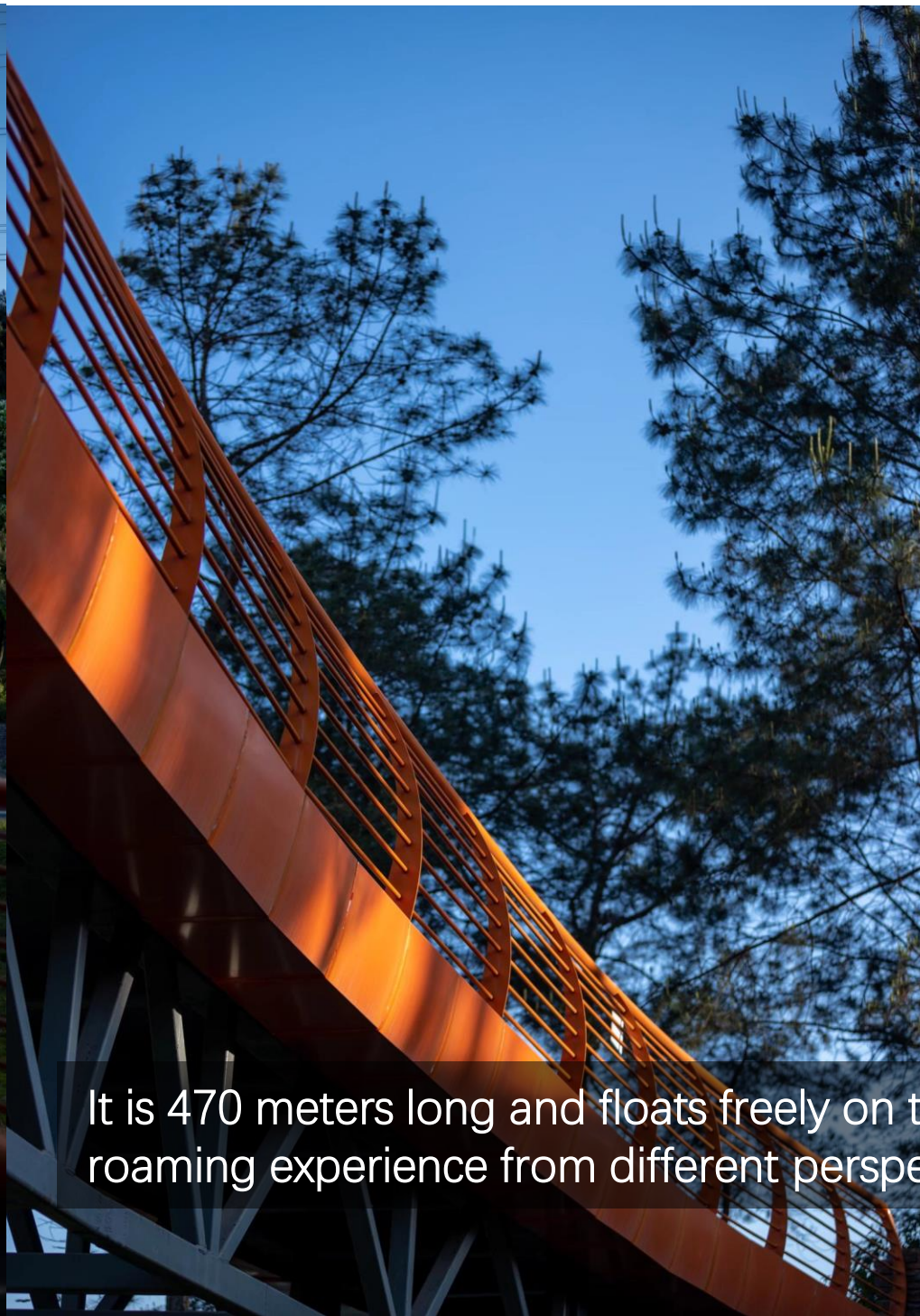
Road



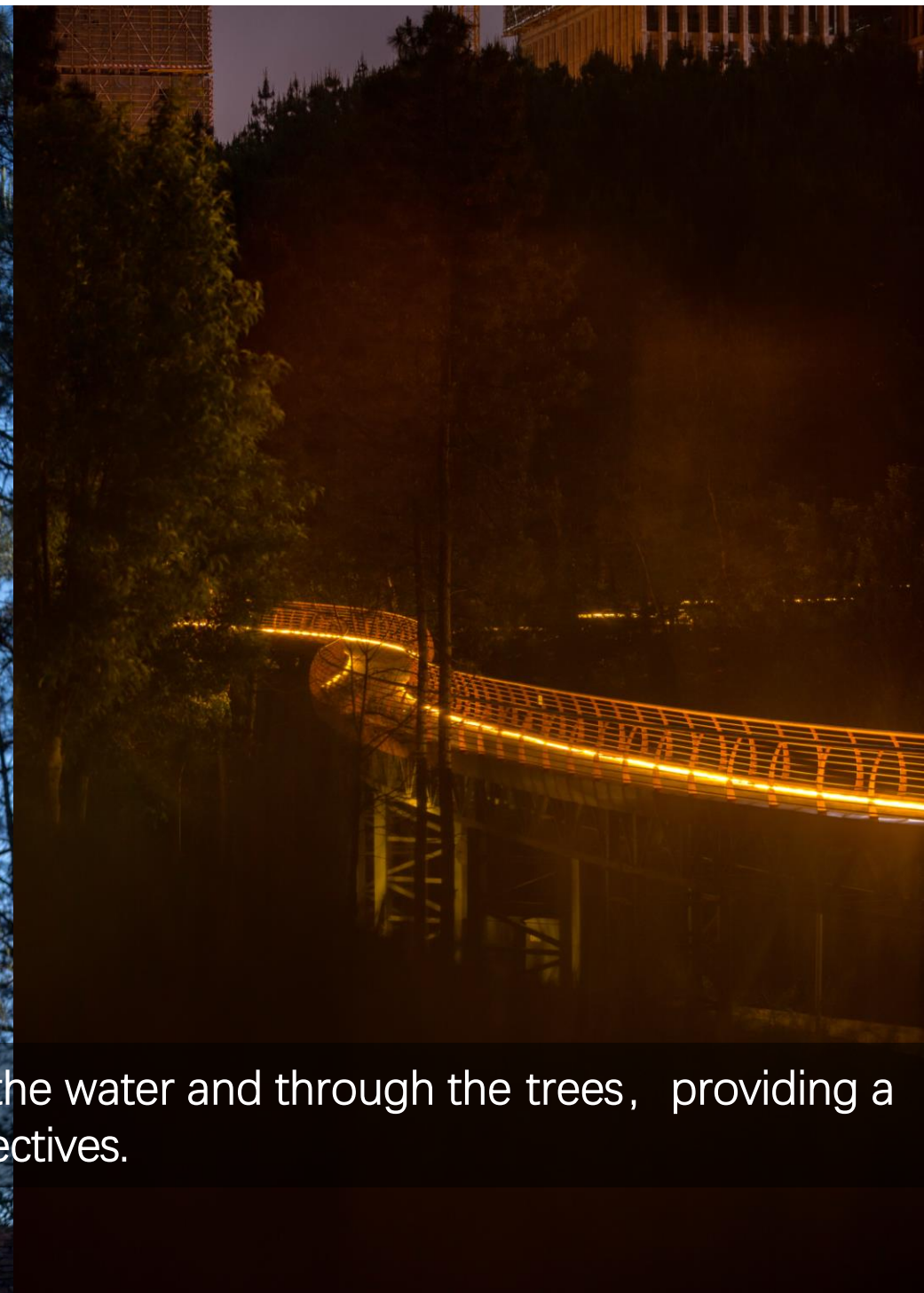
The plank road maintains the passage of small animals in the park in the form of stilts, reducing the damage to the existing terrain and the ecology of animals and plants.



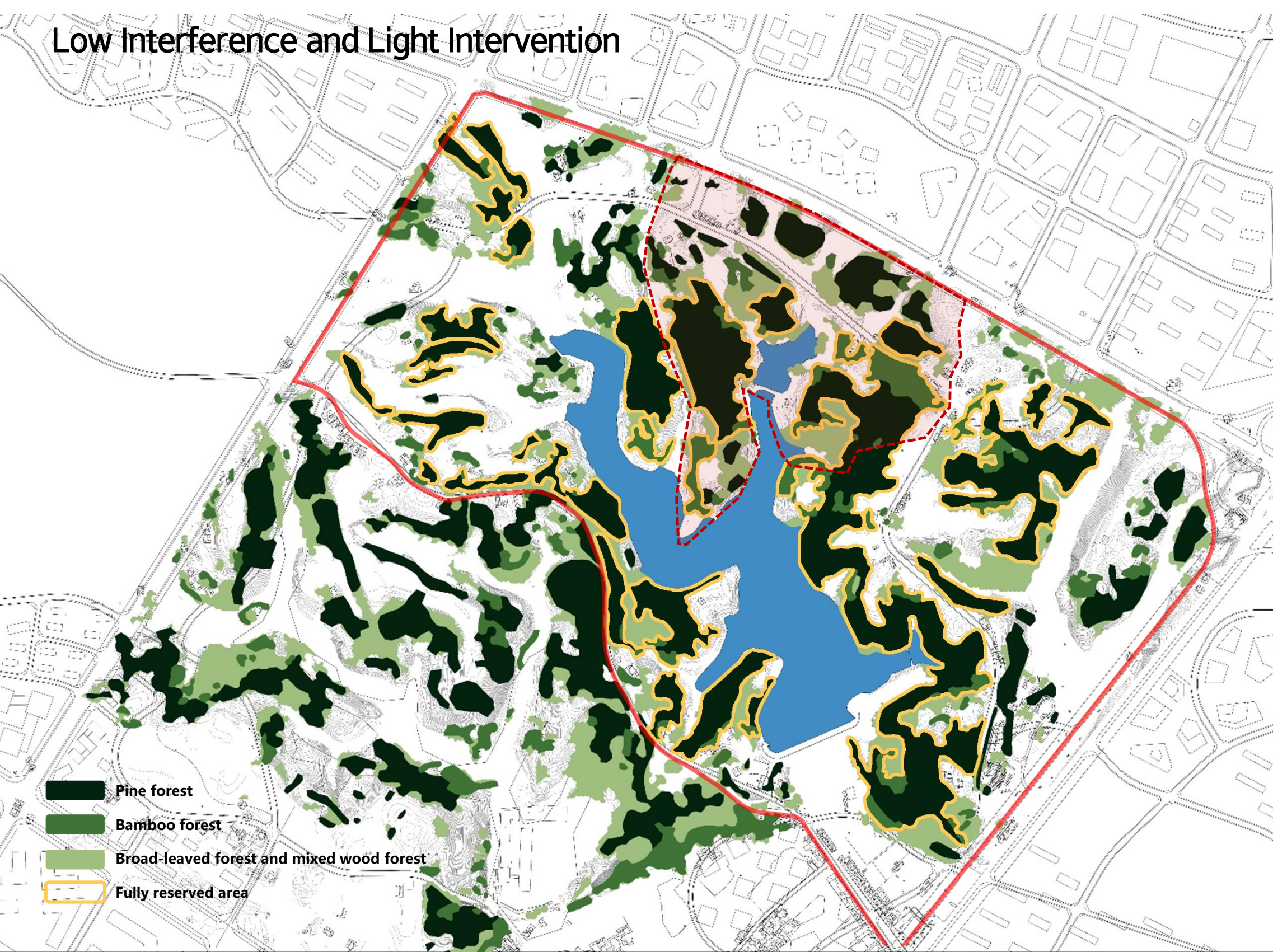
The trestle bridge efficiently connects various scenic spots while minimizing damage to the ecological corridor as much as possible.



It is 470 meters long and floats freely on the water and through the trees, providing a roaming experience from different perspectives.



Low Interference and Light Intervention



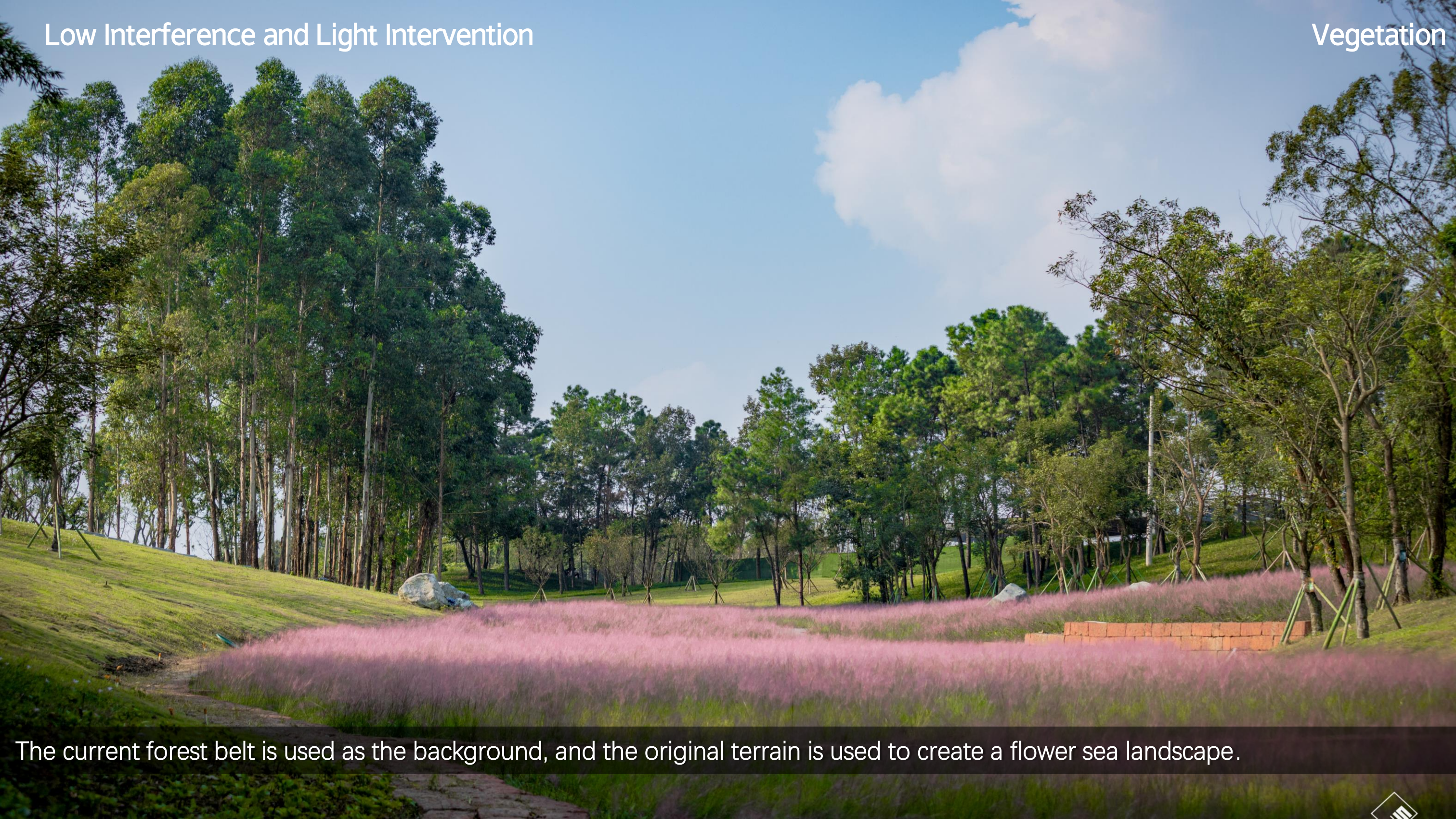
Low Interference and Light Intervention

Vegetation

90% of the original forests are reserved, and the vegetation coverage reaches 60% of the park area.



In the understory space of native pine and bamboo forests, ecological leisure spaces are created by sorting out weeds, planting low maintenance flower borders, and adding ecological wood platforms that have minimal impact on the current vegetation.

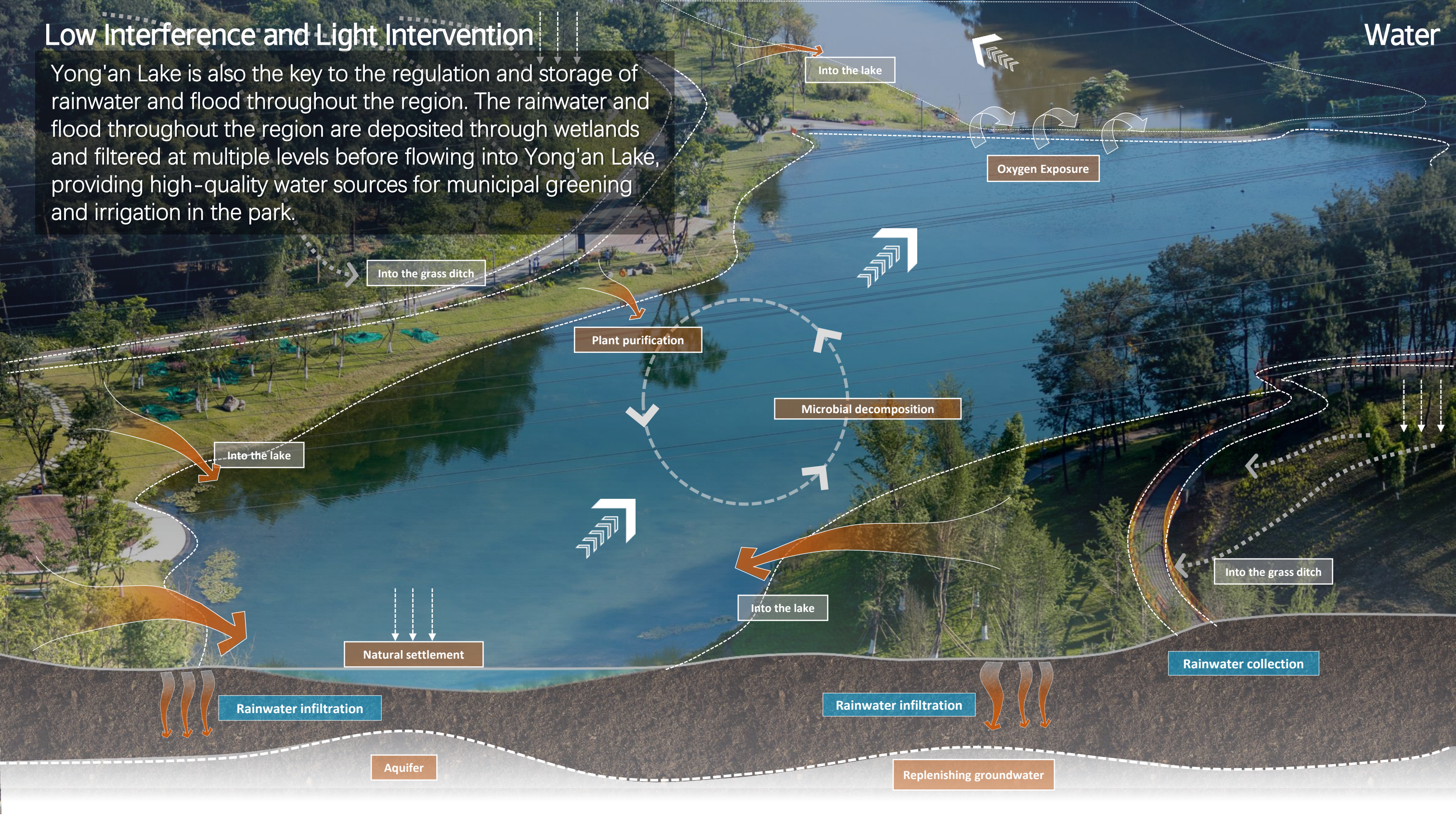


The current forest belt is used as the background, and the original terrain is used to create a flower sea landscape.



Low Interference and Light Intervention

Yong'an Lake is also the key to the regulation and storage of rainwater and flood throughout the region. The rainwater and flood throughout the region are deposited through wetlands and filtered at multiple levels before flowing into Yong'an Lake, providing high-quality water sources for municipal greening and irrigation in the park.





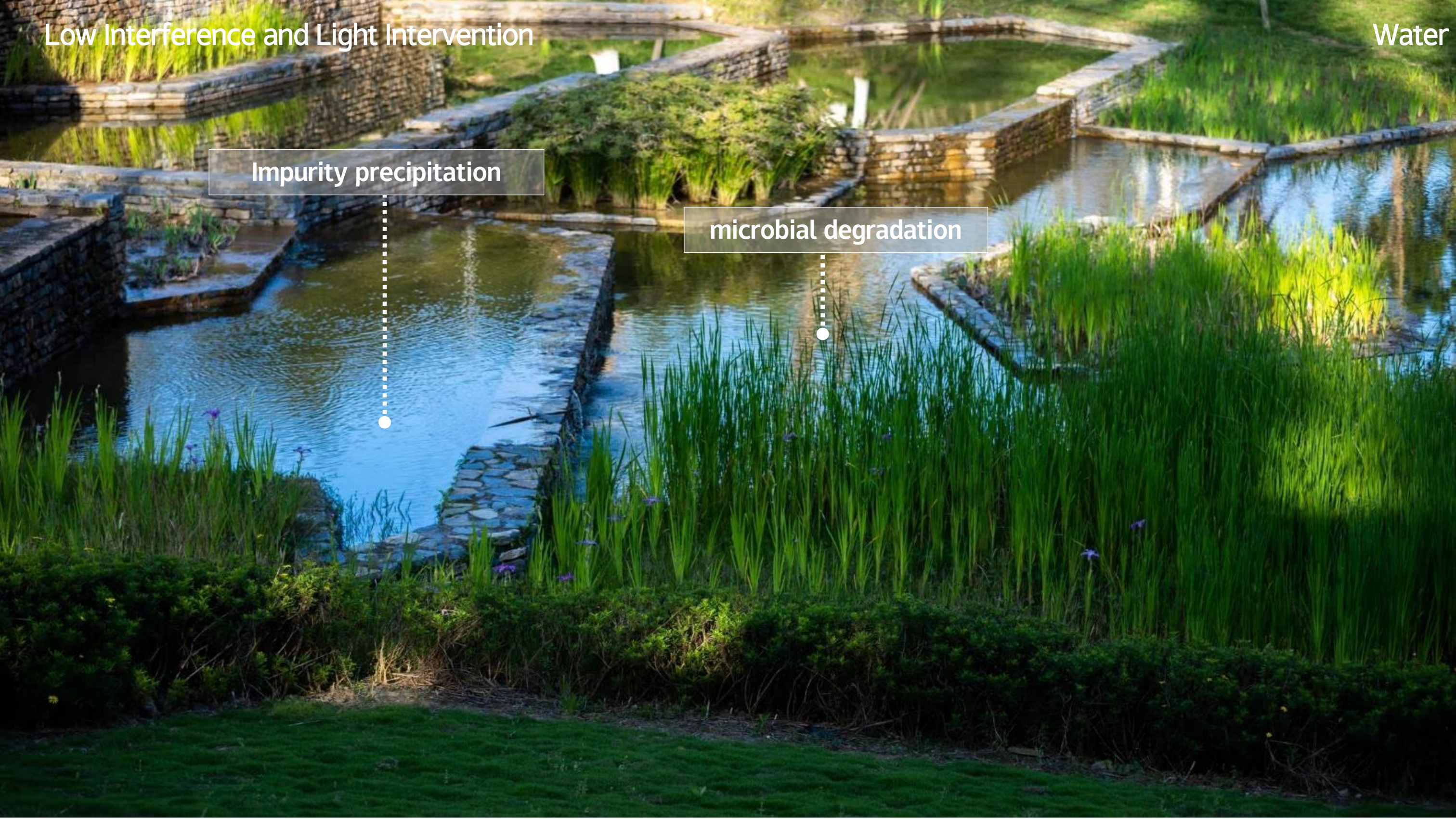
Water Control - Build a water purification system to make the inferior five types of water reach the second category of water.

Low Interference and Light Intervention

Water

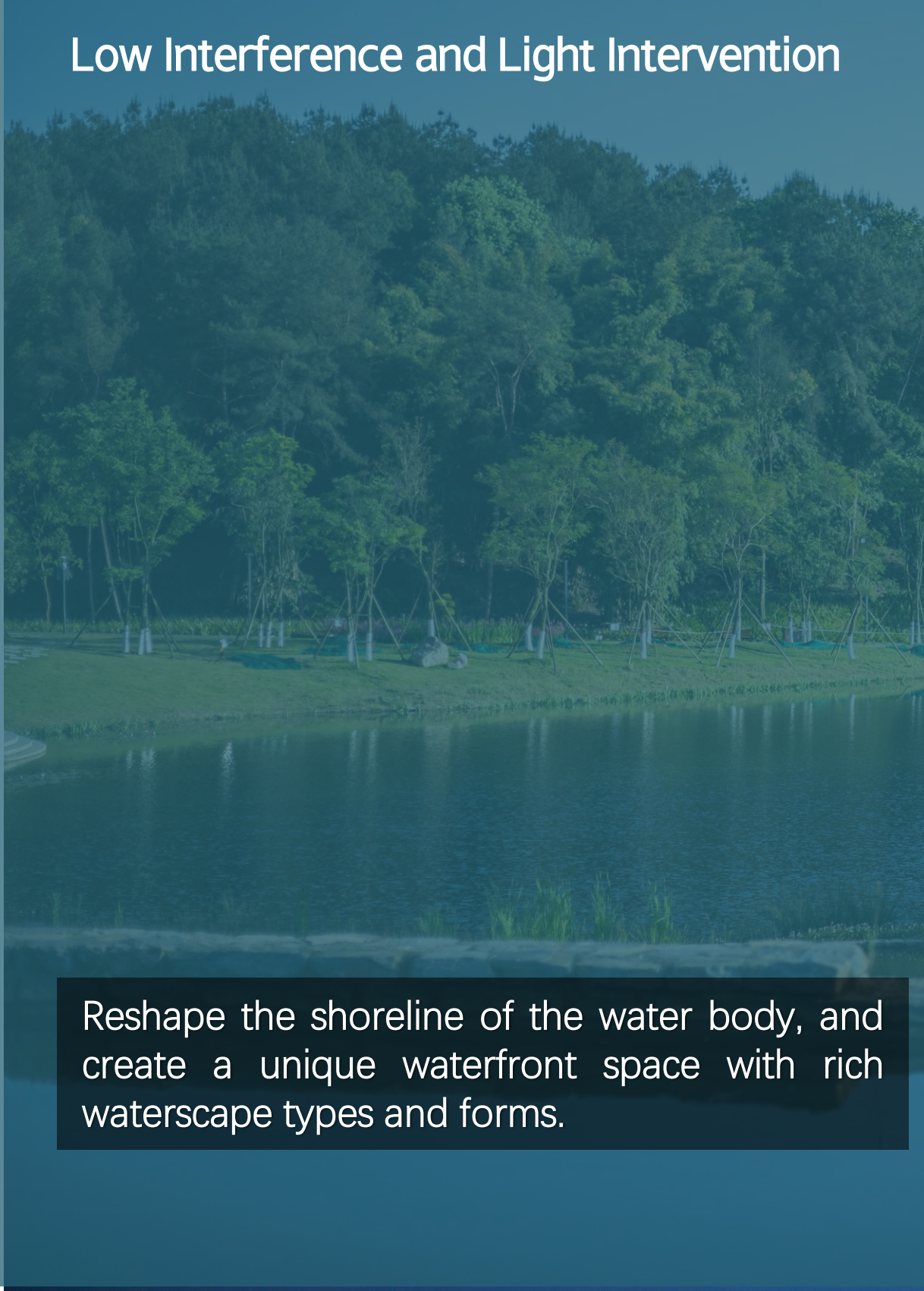
Impurity precipitation

microbial degradation

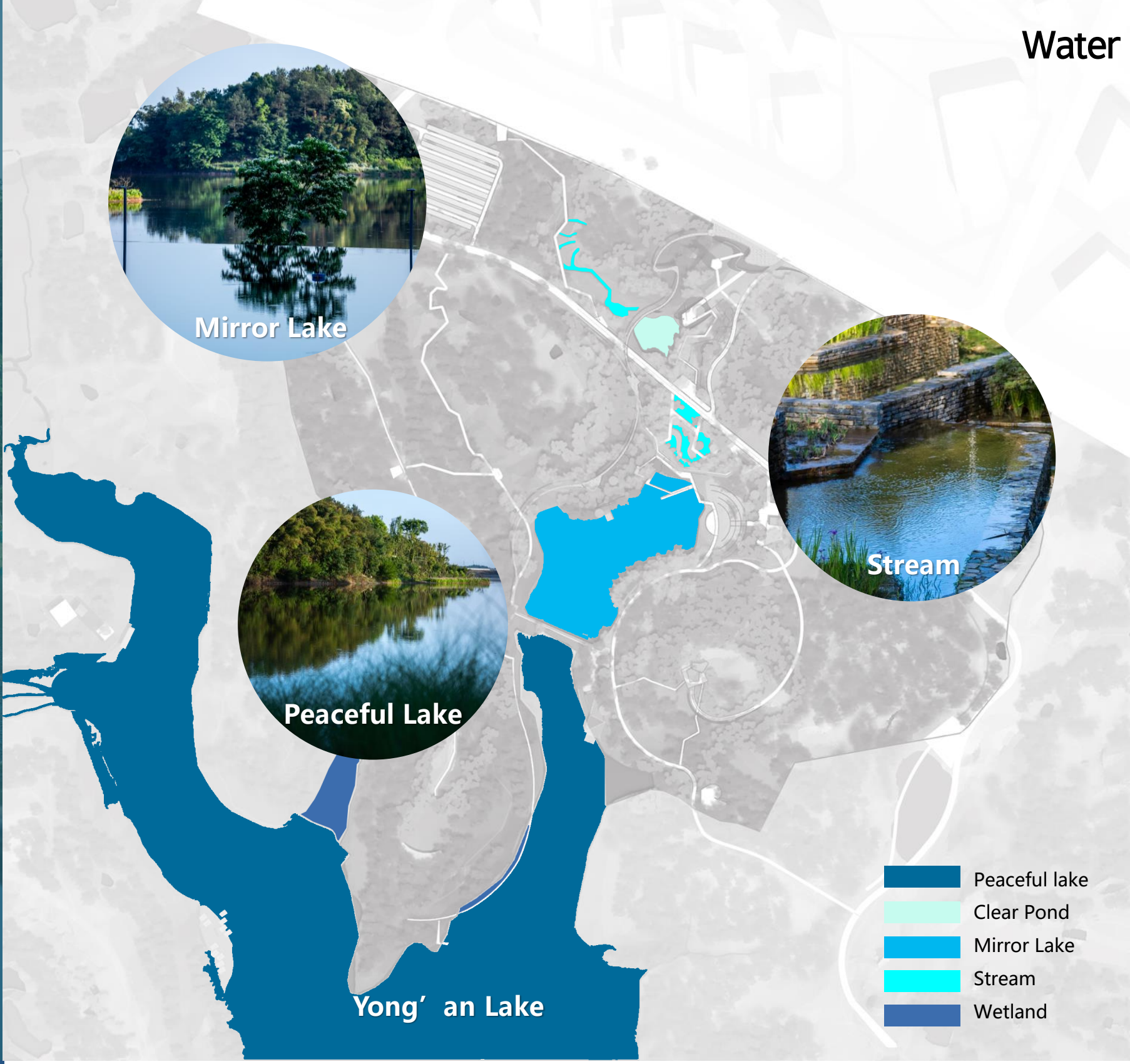


Low Interference and Light Intervention

Water



Reshape the shoreline of the water body, and create a unique waterfront space with rich waterscape types and forms.



Low Interference and Light Intervention



Water



The ecological lake area brings interesting water-friendly experience.

Low interference and light intervention

The architecture incorporates the contemporary expression of traditional Western Sichuan architectural vocabulary, using local materials and techniques such as earth walls, green tiles, and wooden structures, combined with the surrounding mountains, forests, and water colors, to create a beautiful painting

Buildings



永安湖



永安湖



Project Impact



It relies on a good ecological background to carry out various waterfront activities and meet the activity needs of all age groups. It can be seen that Chengdu style "ecology" and "life" are rich in combination reaction in the good ecological context of Yong'an Lake

Project Impact



The negative oxygen ion content in the park is at a high level, and the air quality is fresh, creating a "lung of Chengdu" and leading citizens to a green and healthy life.



Project Impact

A high-quality forest lake area in city
where water and mountains, forests and houses, and people and emotions blend together

永安