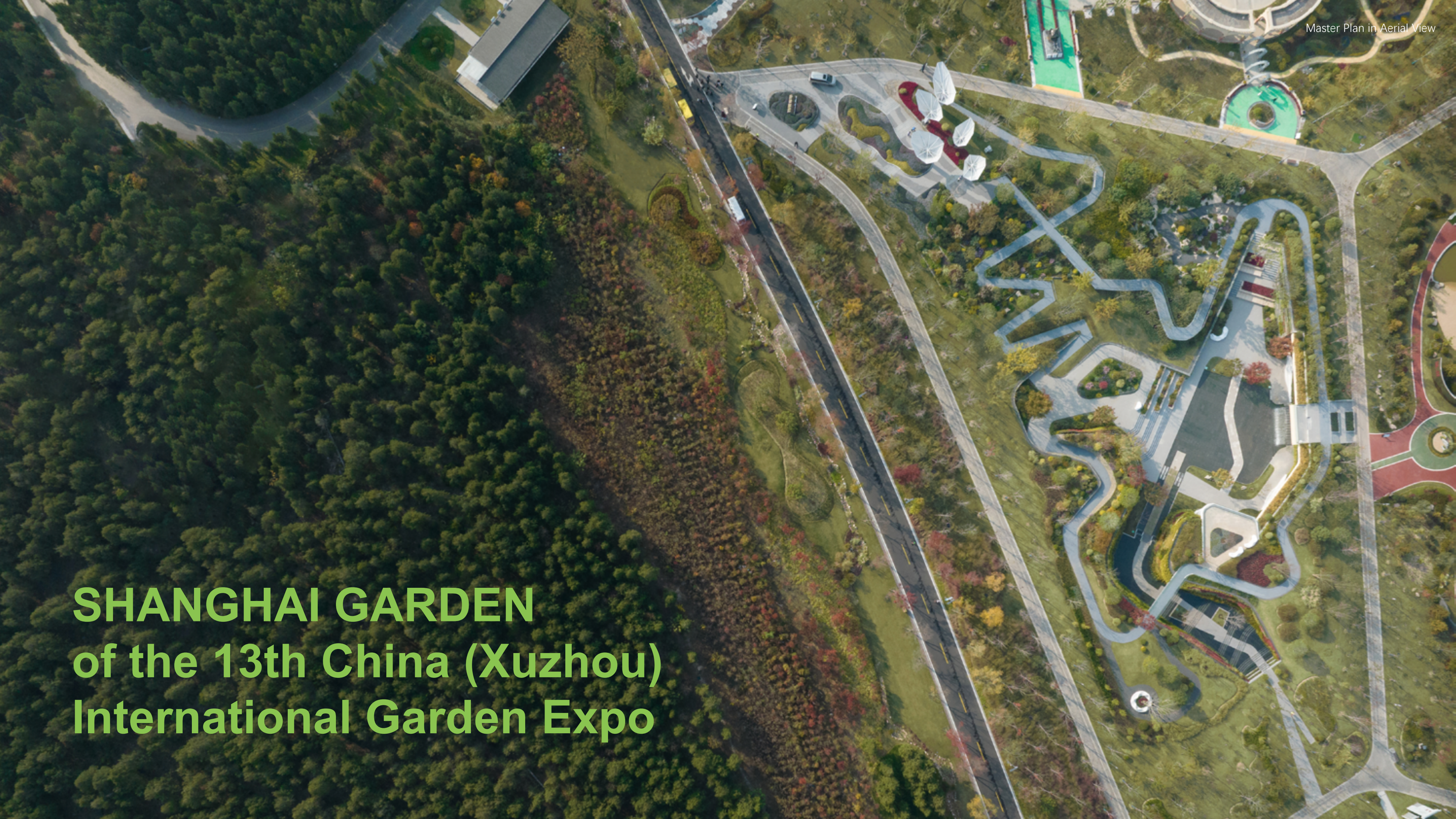


# SHANGHAI GARDEN of the 13th China (Xuzhou) International Garden Expo

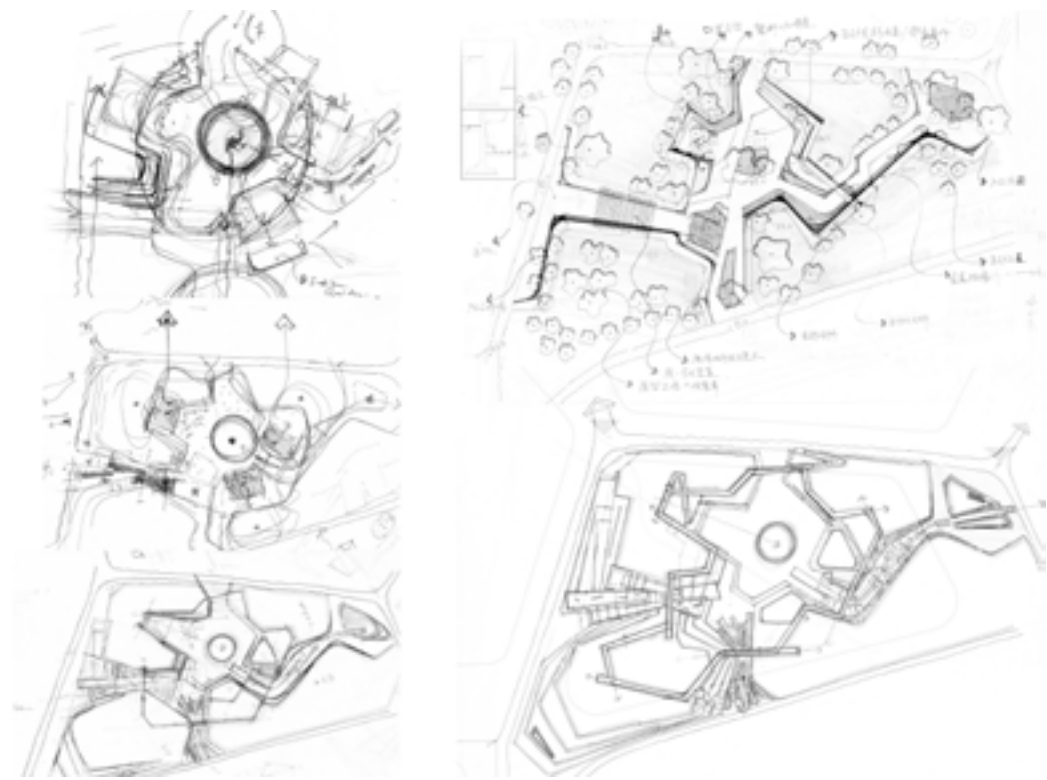




# Project Statement

## Project Overview

Covered an area of 7460, SHANGHAI GARDEN, which is the original design by Shanghai Landscape Architecture Design Research Institute Company Limited, is located in the northern part of the Garden Expo. The south side of SHANGHAI GARDEN is LVLIANG Hill. Its west side and north side are respectively adjacent to TIANJIN GARDEN and YANTAI GARDEN, and the east side leads to the main exhibition area of the "Poetic Canal".



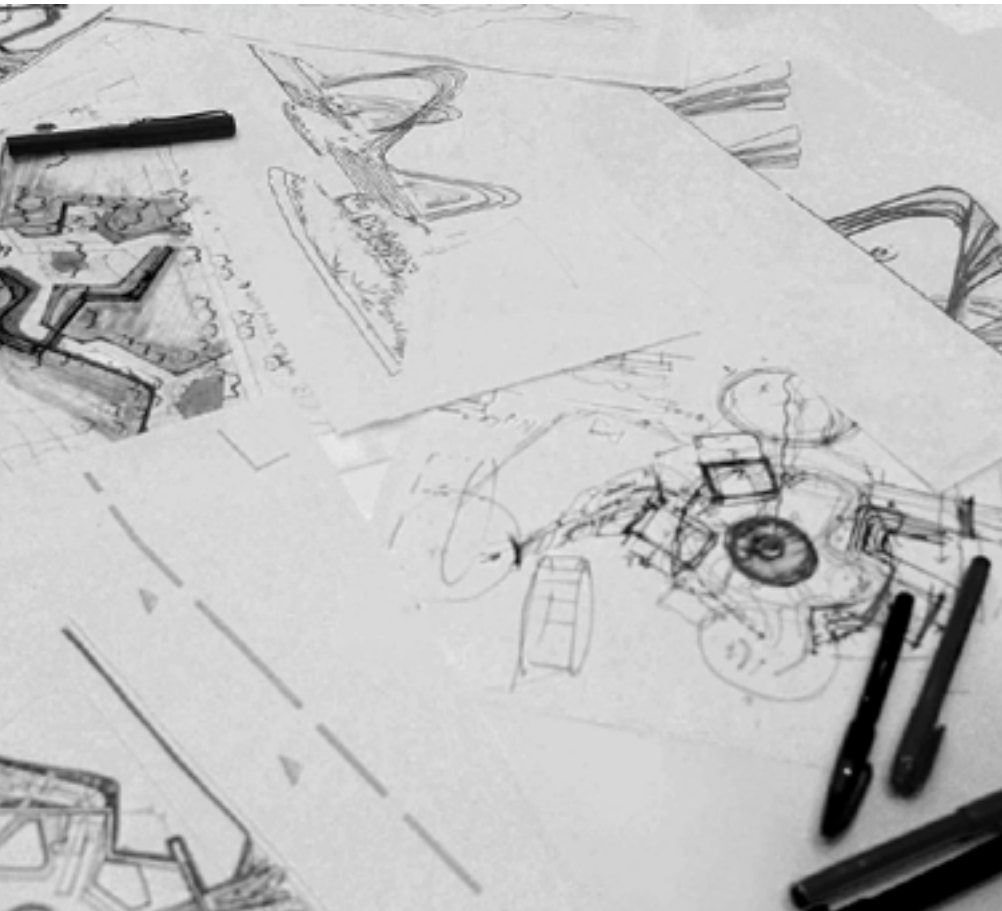
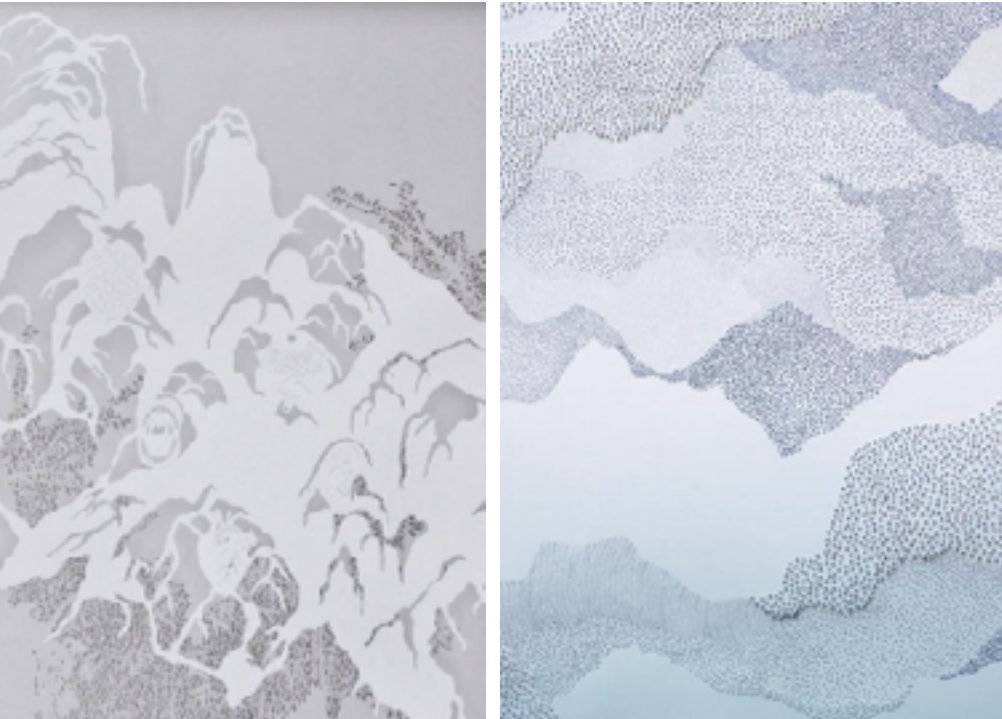
△ Sketch Drawing





# Design Imagination

"New Poetry of 'Shan Shui' Landscape" is proposed as the concept of SHANGHAI GARDEN after analyzing characteristics of both Xuzhou and Shanghai. Inspired by the local cultural characteristics of Xuzhou, the "Shan Shui" cultural image of Chinese gardens, and the unique spirit of Shanghai culture, the SHANGHAI GARDEN takes "New Poetry of 'Shan Shui' Landscape" as the theme. Modern innovative techniques are utilized to manage "Shan Shui", creating a future-oriented landscape.



Inspiration 1 - Elements of Xuzhou's Local Cultural



Inspiration 2 - Chinese Garden Cultural Intentions

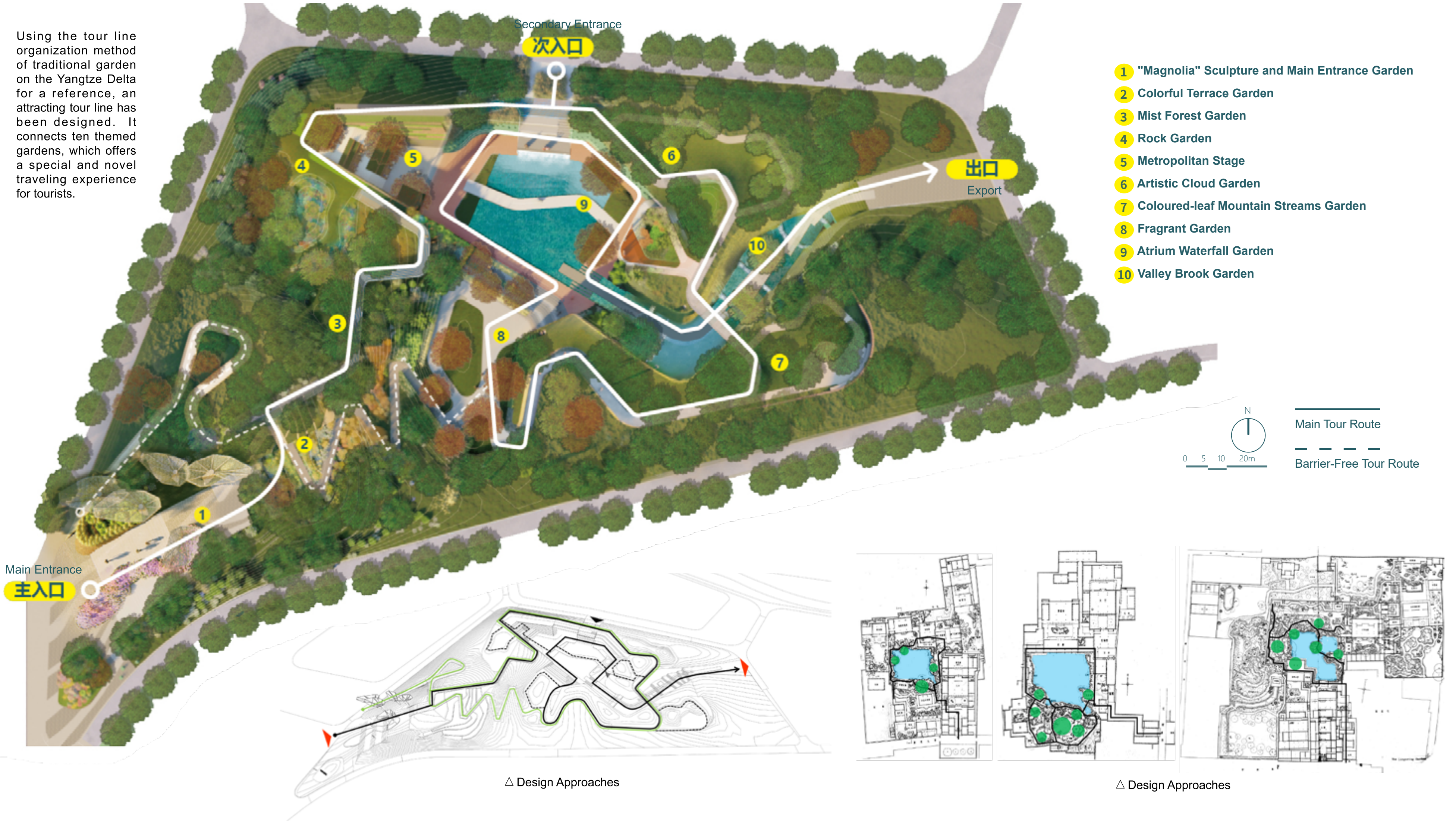


Inspiration 3 - The Spirit Of Shanghai's Unique Shanghai Culture





Using the tour line organization method of traditional garden on the Yangtze Delta for a reference, an attracting tour line has been designed. It connects ten themed gardens, which offers a special and novel traveling experience for tourists.

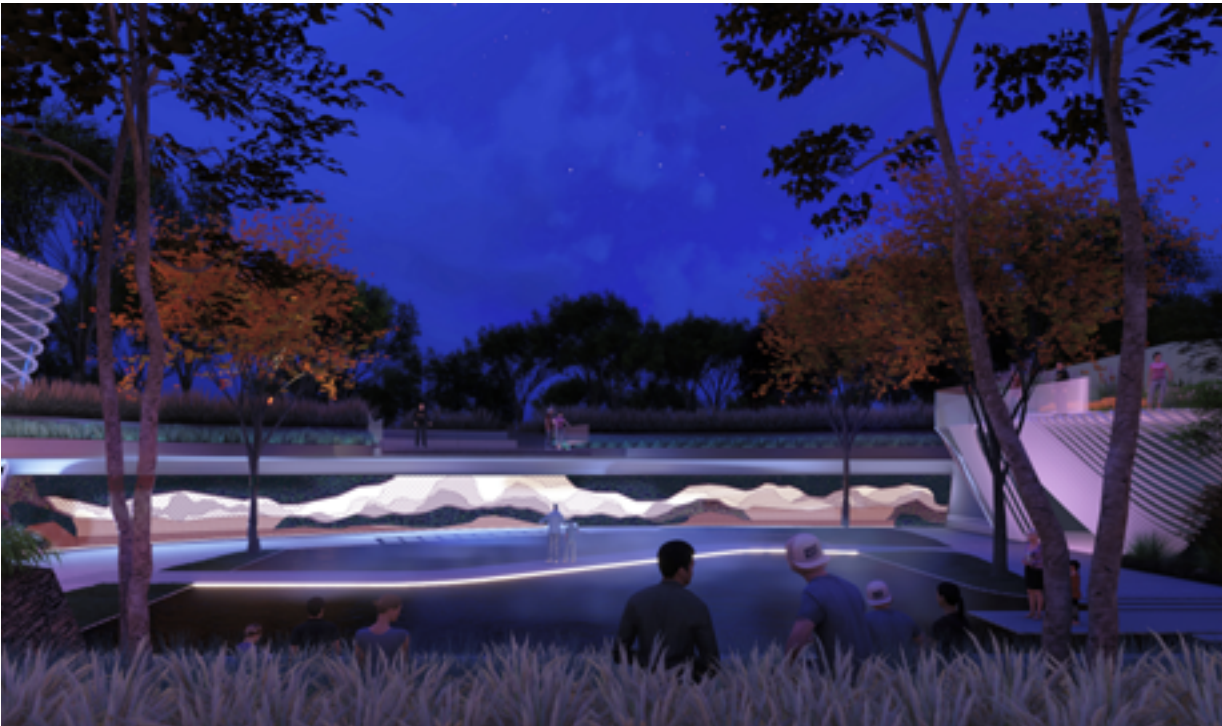




# Project Narrative

## Planning Research

SHANGHAI GARDEN of the 13th China (Xuzhou) International Garden Expo is centered on the theme of "Green City, Better Life", with the main theme of "Restoring Green Water and Green Hills, Building Beautiful Homes" to highlight the characteristics of "ecology, innovation, heritage and sustainability". It motivates the significant transition of Garden Expo from a professional exposition of garden greening to a complete exhibition of urban development and performs to create "Ecological Garden Expo, Cultural Garden Expo, Wisdom Garden Expo, and Sustainable Garden Expo".



"SHANGHAI GARDEN" is a division of the provincial GARDEN and is situated in the "Canal Corridor" planning district. The planning criteria for the design of SHANGHAI GARDEN include examining the harmonious relationship between people, the city, and nature; showcasing Shanghai's river and seascape; showcasing urban culture and technology civilization; showcasing the transformation and development of the city in the new era; and showcasing the good life of the city. The following are the planning control requirements:

(1) Technology showcase: sponge cities, sound and light technology, green wall technology, and next generation information technology.



△ Special Technology



△ Special Technology



△ Interactive Display Lighting-Ripple

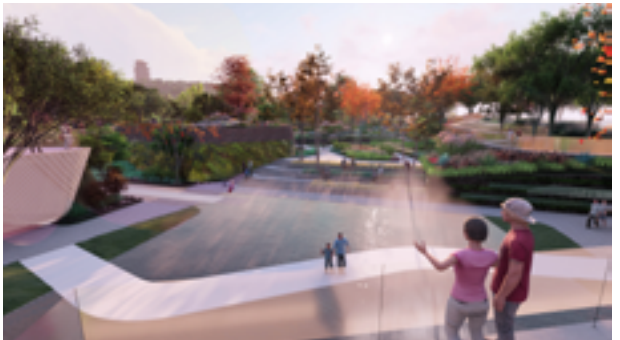


△ Interactive Display Lighting-Firefly

(2) Plant landscape: To create a delicate and natural landscape, make use of a range of flowering climbing plants in a fair amount with a blue and purple flower border.



(3) Reference color scheme: To depict the fashionable smart city landscape in the landscape vignette, it is advised to use the blue and purple system. The gray method is advised for garden pavement.



(4) Hard pavement: the ratio of hard pavement area to the total area of GARDEN  $\leq 40\%$



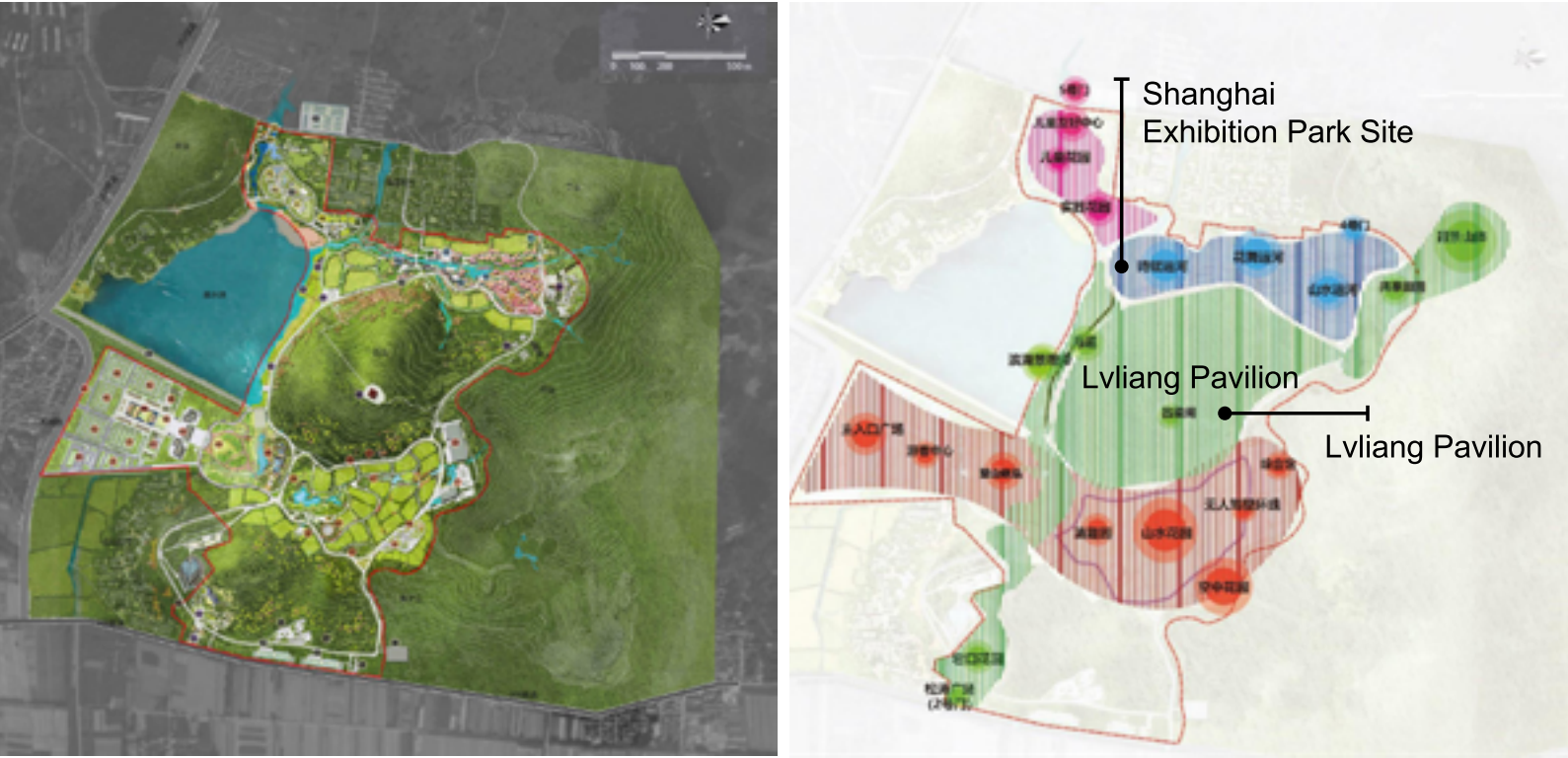
(5) Buildings and structures: modern and simple metal landscape frameworks and green wall decorations can be used, the building covers an area of  $\leq 300$  square meters, the main building layer  $\leq 2$  layers, height  $\leq 7$  meters (local breakthrough).





# Site Analysis

On the north side of Garden Expo, in the southwest corner of the "Poetry and Canal" theme area, is where you'll find SHANGHAI GARDEN. A mountain is to the south, the Rolling Jade Plaza and Tianjin GARDEN are to the west, not far from the reservoir, another city GARDEN is to the north, and the major "Poetry Canal" display location is to the east.



# Garded Scope

To continue the whole spatial experience and design aesthetic, it is necessary to take into account the red line of GARDEN, which is 7460 square meters, as well as various public spaces that extend to the four roadways, which are roughly 2843 square meters.



# General Plan



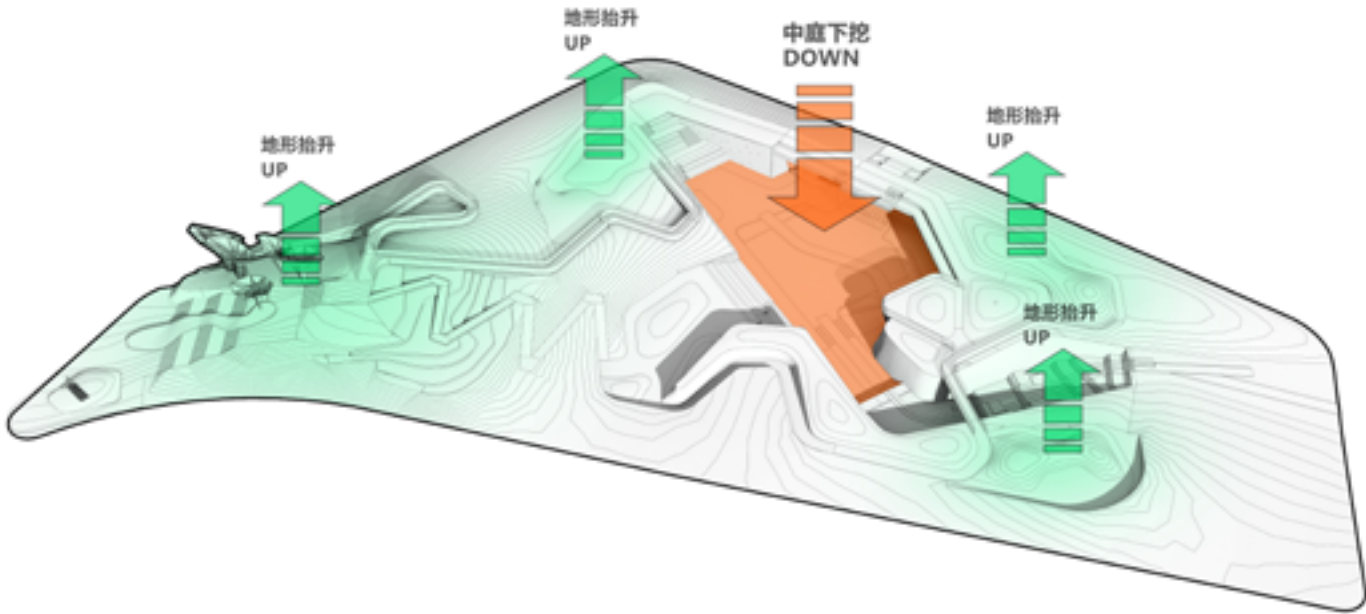
# Background





# The Spatial Generation

In order to create multifarious landscape experience in a limited space, the site is transformed from a monotonous plane space to a futuristic three-dimensional garden. By operating the topography, undulating landscape hillsides, sunken central courtyards, and misty flowing valleys are created, which altogether form the framework of SHANGHAI GARDEN.



△ Sunken Central Courtyard



△ Atrium Waterfall Garden



△ "Magnolia" Sculpture and Main Entrance Garden



△ Rock Garden



△ Mist Forest Garden



△ Valley Fragrance Garden



△ Colorful Terrace Garden



△ Artistic Cloud Garden

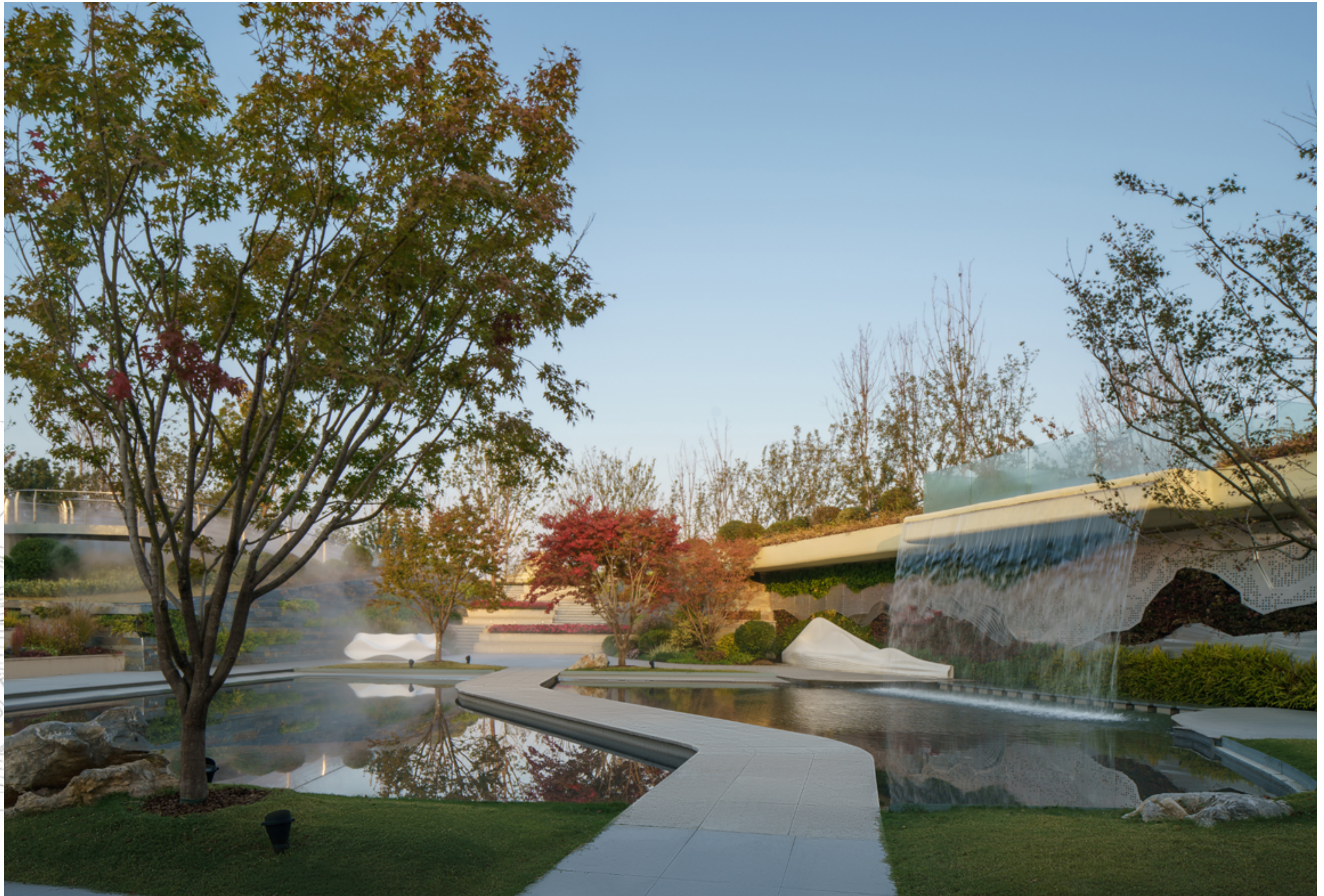
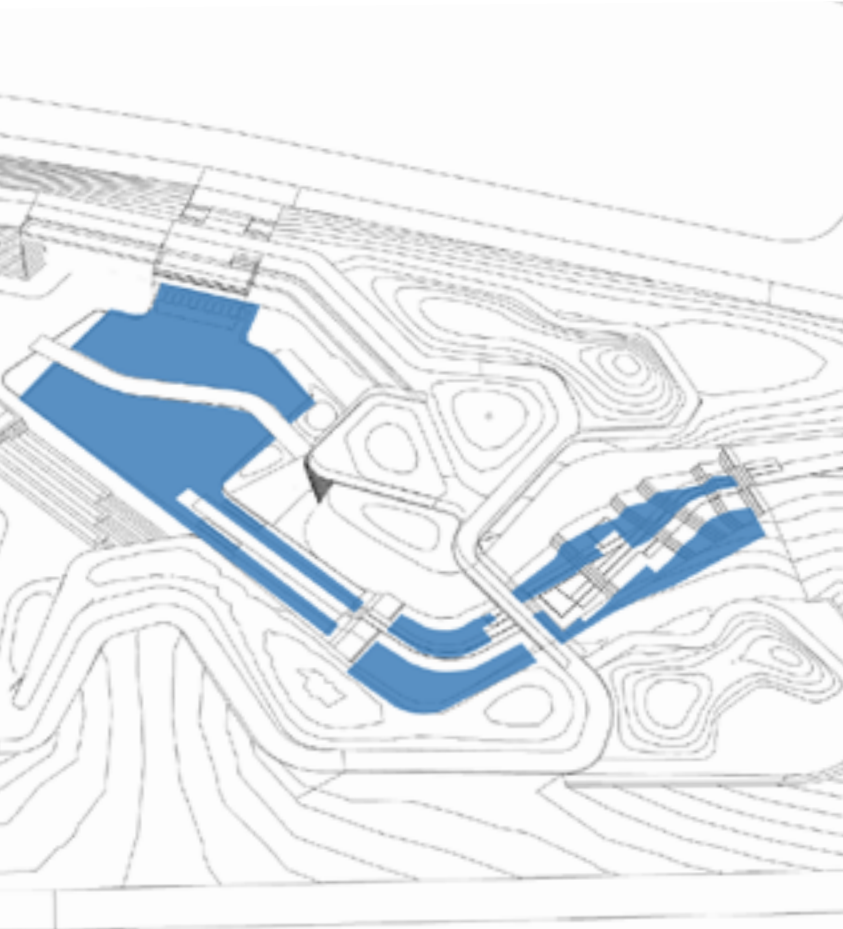


△ Mountain Streams Garden



# Integration

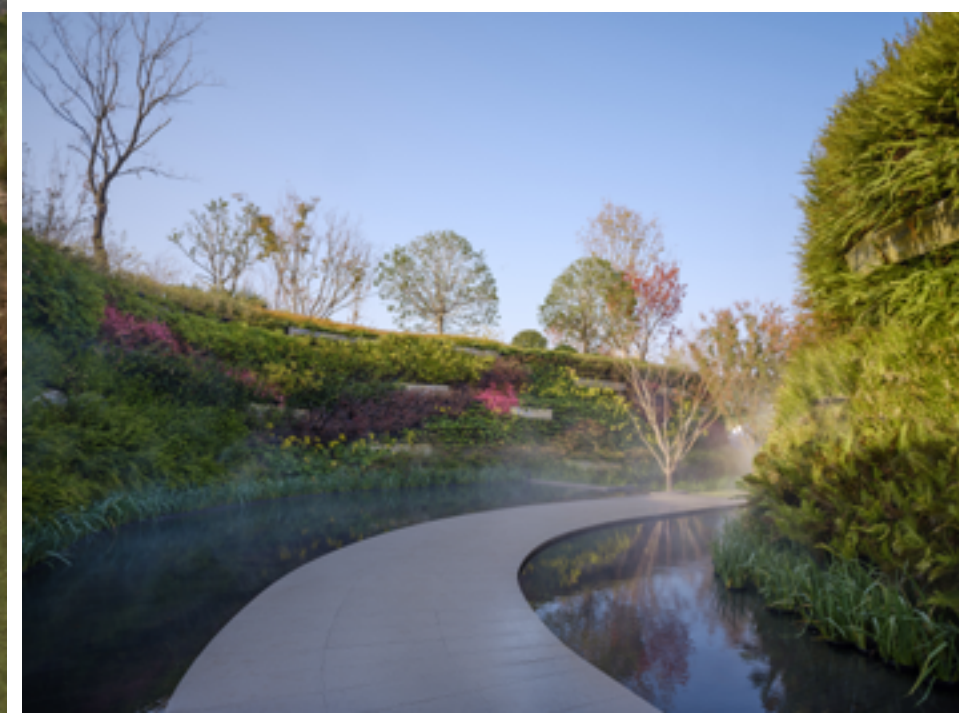
Based on the above framework, “Water” element is innovatively used to create different forms of “Water Landscape”, such as the Mirror Pool and Waterfall in the Central Courtyard, the Artificial Stream in the Flowing Valley, and the Surrounding Clouds and Mist, so as to interpret “Shan Shui Culture” and enhance the tourist experience. Physically interacted with the "light" elements, these diverse waterscapes can present an artistically dynamic image of light and shadow.







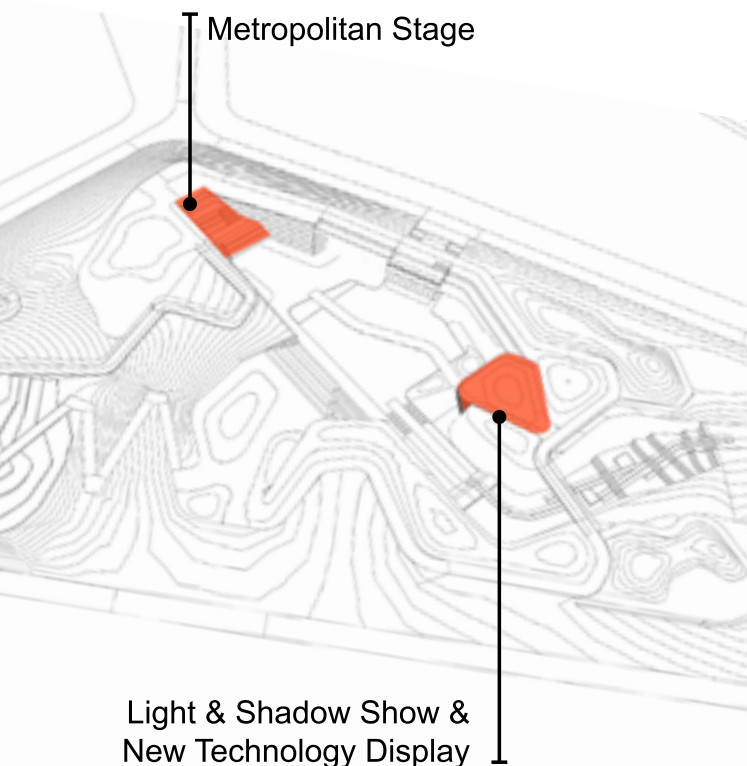






# Highlight

The Highlight of SHANGHAI GARDEN is also the landscape application of new technologies and materials, which create a dreamy and artistic atmosphere. Digital design and construction are used on the landscape wall on the north side of the garden, presenting a magnificent and innovative "Painting of New Poetry of 'Shan Shui' Landscape ". Meanwhile, streamlined 3D-printing seats are also integrated on the wall. The building called "Light and Shadow Show", on the east side of the garden, displays the procedure of the design and construction of SHANGHAI GARDEN for visitors. Its facade is formed by parametric design, which also represents superb construction techniques. In the meanwhile, creating mysterious and novel light and shadow effects.





Central Waterscape Wall



The 3D-Printed Landscape Wall And Lotus Bench of Tree Pond



Night view and Lighting



Theme Wall "Landscape New Fugue"



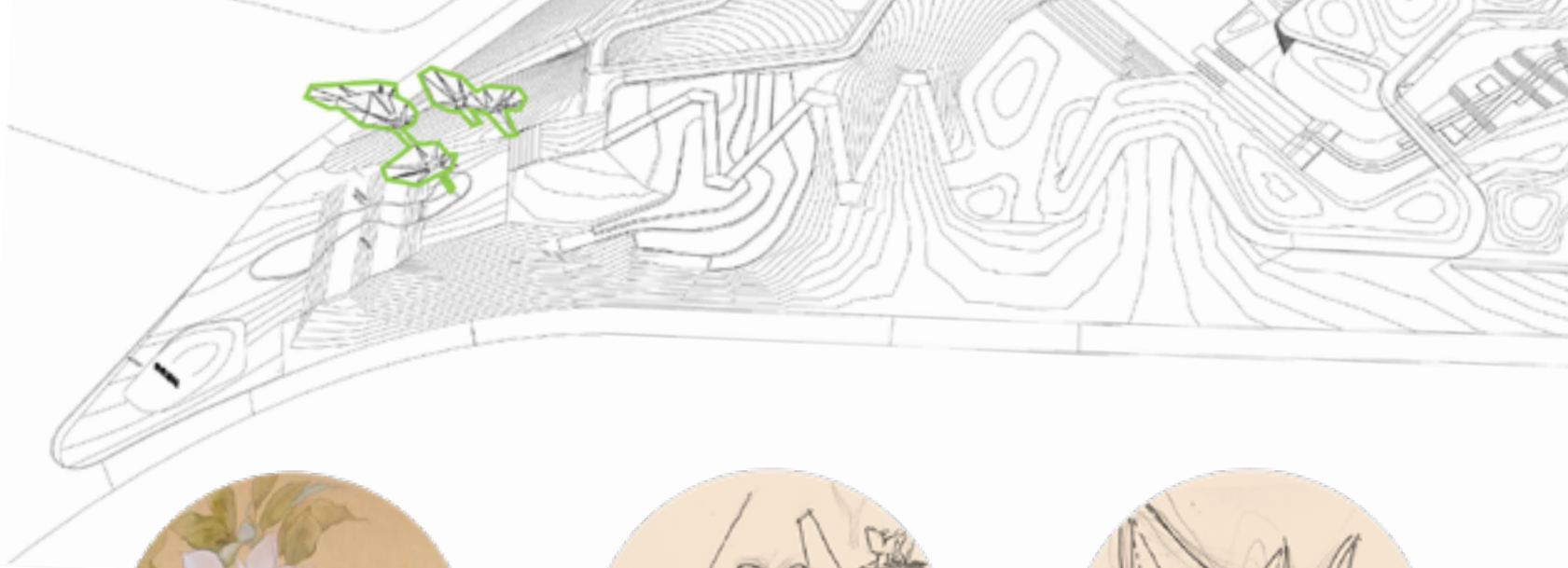
Light & Shadow Showground Grill Structure







"Magnolia" Sculpture and Main Entrance Garden



**1、Design Point**

The design adopts the shape of Shanghai's city flower, the white orchid, which symbolizes the pioneering and progressive spirit.



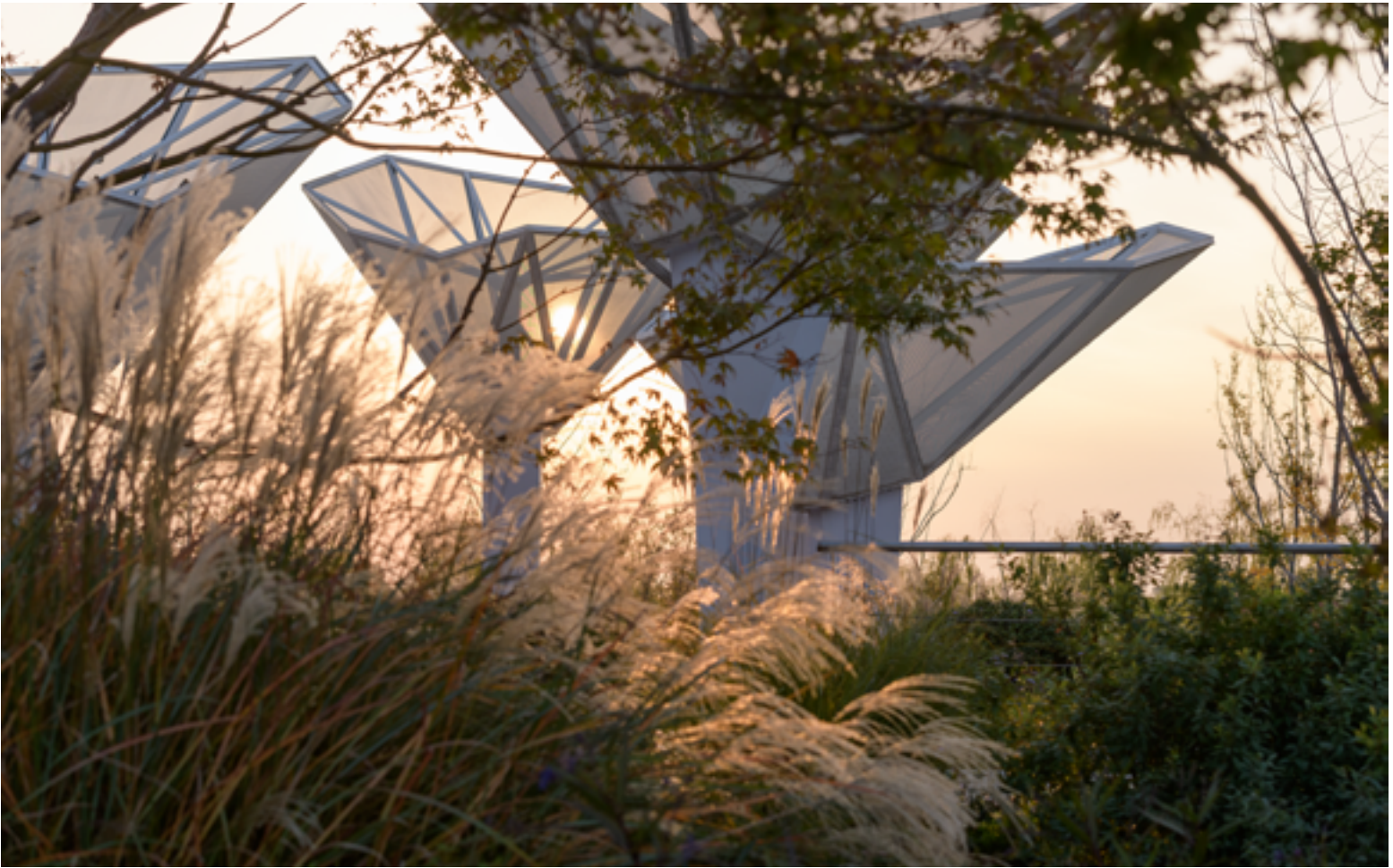
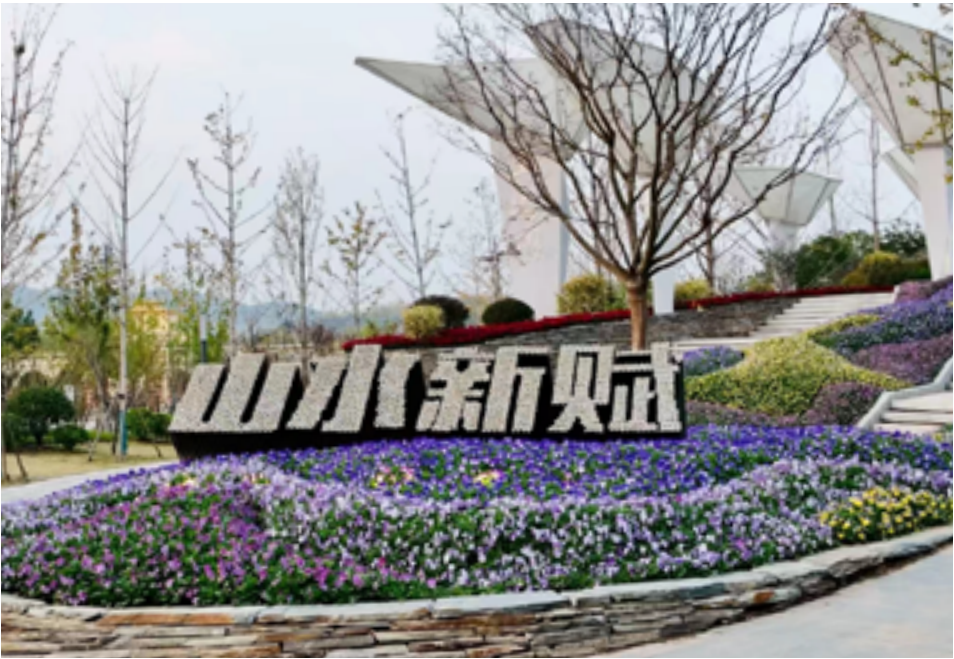
**2、Element Extraction**

The design extracts the elements of magnolia petals, using the petals of different sizes and forms into groups.



**3、Space Expression**

Combined with the entrance terrace space, using different height difference relationship to form a vertical staggered spatial relationship, emphasizing the sense of entrance ceremony.





# Five Theme Gardens

In addition, five theme gardens that work with the geography of the terrain are built up inside GARDEN. The park contains a vertical greening wall that serves a variety of greening and beautifying purposes.

A nice landscape impression must be guaranteed over the exhibition period, therefore post maintenance must be given careful consideration. Technically, the heating cable's heating principle is used to warm the roots or planting area of the plants. This creates an environment for plant growth around the roots of the soil that is unaffected by changes in the ambient temperature, prevents the soil from freezing, and eventually leads to normal growth and evergreening of the plants.



Dry rock garden



Artistic cloud garden



Colorful Terrace Garden



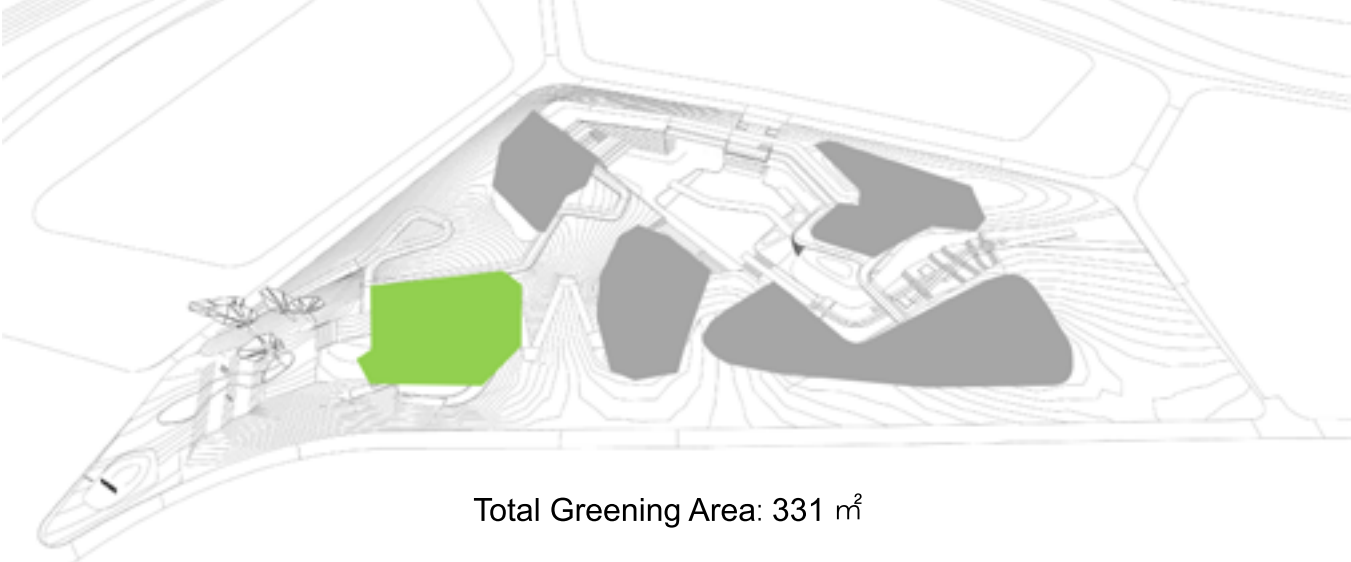
Valley Fragrance Garden



Mountain Stream Garden



# Colorful Terrace Garden: Hosta Flower Border

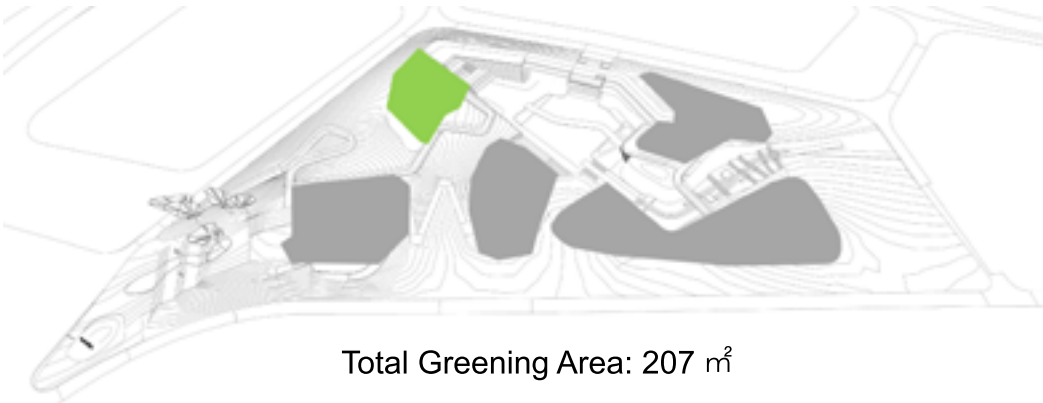


It is situated at the park's main entrance. Through the use of a terrace, a three-dimensional landscape environment is created. The room for growing blooming plants and different heights is mixed with the vegetation. Hostas of various hues and shapes are used to make vibrant blooming clusters. Large colored leafy trees that have been strategically planted provide a varied and rich environment, inviting people to engage with it and take their time to appreciate the beautiful and colorful garden.





# Dry Rock Garden: Rock Plants

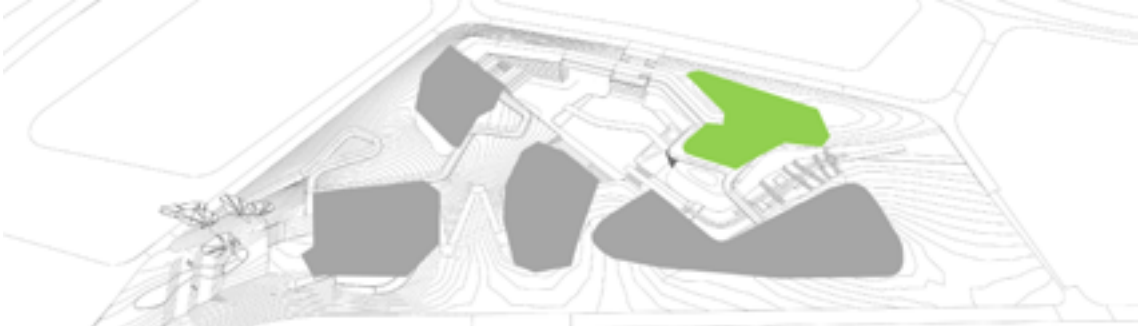


In order to create a unique scene and draw in people, it is situated in the urban stage area on the west side. An evergreen background is created using a skeleton of large bushes. Wintertime scenes with low, rocky ground cover plants and flower-like capsules are colorful. The scenic walls and steps on either side of the stage continue the motif of rocky plants to create a cohesive overall design.





# Artistic Cloud Garden: Patchy Ornamental Grasses and Modeling Plants



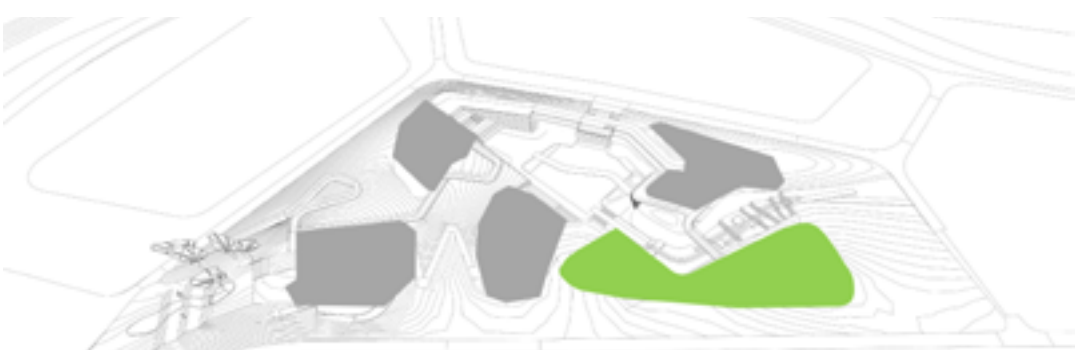
Total Greening Area: 422 m<sup>2</sup>

It is situated on the park's southeast edge and has a highly creative vibe. Usually utilized between September and October, decorative grass plants combine aesthetic elements with their cloud-like hue and texture to provide a hazy impression. Due to the poor performance of decorative grasses, evergreen modeling plants are used in their stead from November to December. In order to produce a hazy form and a landscape setting that blends art and amusement, it picks plants that are simple to trim.





# Mountain Stream Garden: Plants with Vibrant Foliage



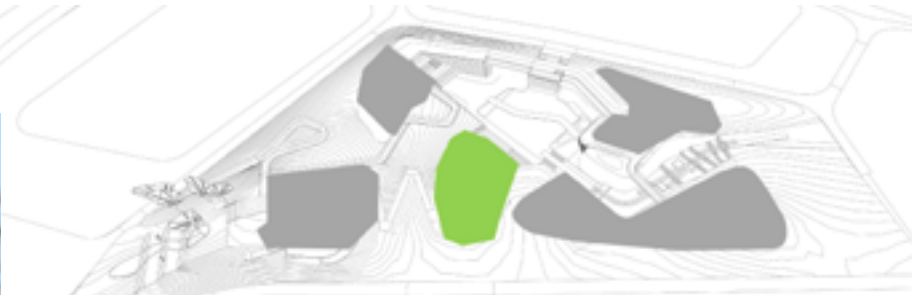
Total Greening Area: 620 m<sup>2</sup>

It is situated in the park's southeast region, transforming the topography into a microtopographic environment. The dominant keystone tree species is ginkgo, and red raspberry plants are scattered throughout to create a mountain stream forest. Even from a distance, the golden yellow color of autumn captures attention, and the red raspberry stems are employed as decorative points in winter. With the crimson trees, the snow's attractive white tone really pops. The landscape topography, sunlight, and woodland combine to create a peaceful ambiance.





# Valley Fragrance Garden: Aromatic Plants



Total Greening Area: 490 m<sup>2</sup>

It encircles the valley's interior recess. To frame the area, tall, colorful green trees are positioned vertically upward. At the platform's center, fragrant plants and modeling pines are placed. Maple leaves, pine leaves, grasses, and flowers all come together to create the feeling of traveling through a valley. The leaves are vividly colored in the fall, while the light and shadows dance delicately with the trees in the winter. Evergreen and floating from all perspectives is the core modeling pine.





