

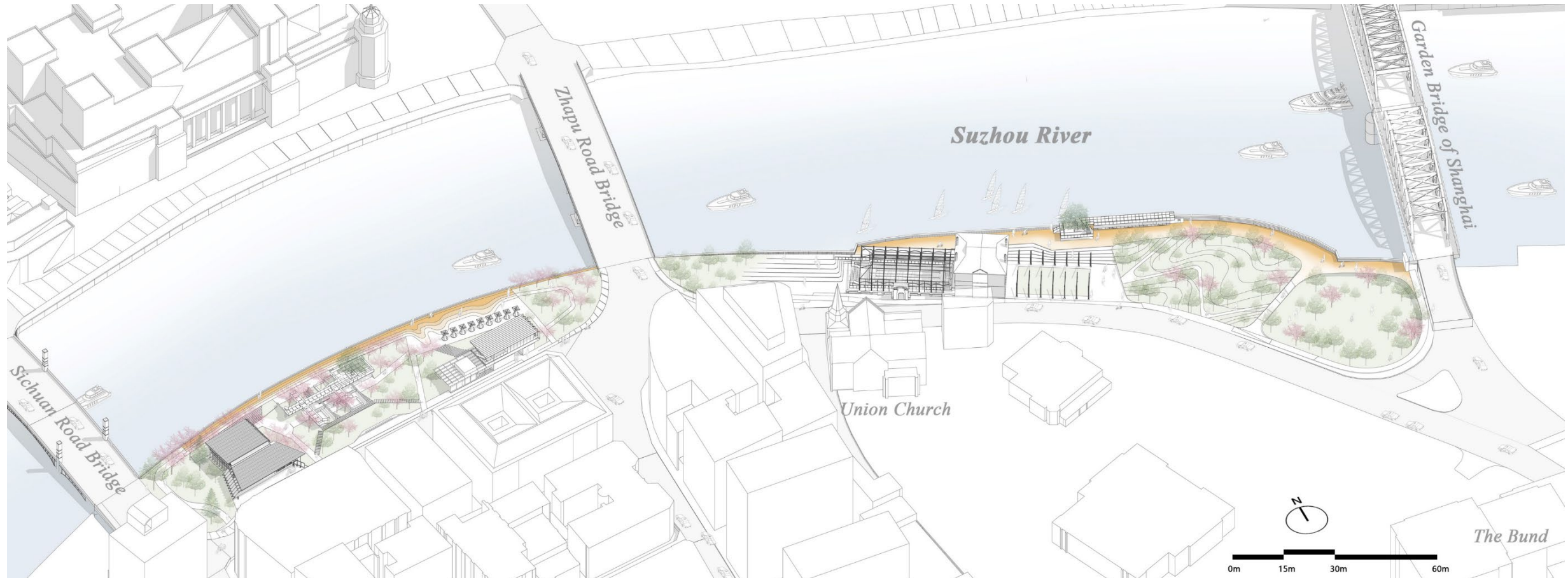


Landscape Regeneration of
Suzhou Creek Waterfront Public Space

Project Statement

The Revitalization of Public Space: A Case Study of the Bund Section of Suzhou Creek Waterfront in Shanghai

The Suzhou Creek, often referred to as the mother river of Shanghai, has played a crucial role in nurturing the national industry and sustaining various forms of life in Shanghai for over a century. However, the river has also endured severe pollution and was once considered a “back alley of the city.” Since the 1990s, efforts have been made to restore the river and revitalize the surrounding space. As a result, the river has gradually cleared, and the space has been transformed into a “Typical demonstration area for livable life in a mega-city.” The Bund section, located in Huangpu District at the confluence of the Suzhou and Huangpu Rivers, boasts a high concentration of historical landmarks and is considered the core section for continued transformation. The project aimed to **interpret “Shanghai’s historical urban-scape in a long scroll” and transformed this area from a “gray backside” to an “colorful urban living room,”** making it one of the most vibrant waterfront spaces. In the “post-epidemic era,” where encounters and shared experiences are more valued, this **historical yet modern, multifaceted yet open, urban yet natural space will provide healing for “people” through the restoration of memory, function, and nature.** The space will attract people to gather, regain confidence and strength, and experience peace and happiness.



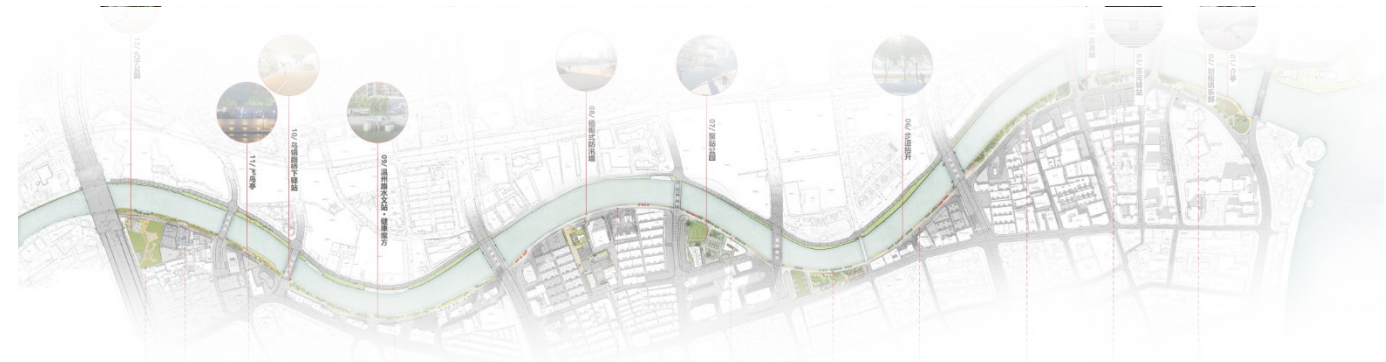
Design Concept and Strategy



Location Map

The Revitalization of Suzhou Creek: Interpreting Shanghai’ s Historical Urban-scape in a Long Scroll

Suzhou Creek, despite its recent decline, the river has a rich historical background. After a prolonged period of water quality restoration, the riverfront public space - particularly the Bund section at the confluence with the Huangpu River - is in need of revitalization. The concept of “Shanghai’ s historical urban-scape interpreted in a long scroll” was proposed to **present a continuous Shanghai “genius loci” in a contemporary context.**



Shanghai's Historical Urban-scape interpreted in a long scroll



A Refined Waterfront Leisure Belt



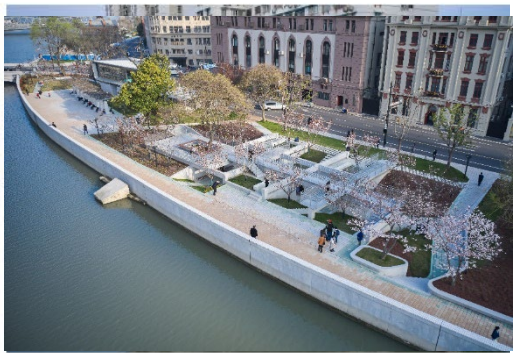
A Diverse Green Ecological Belt



An Elegant Artistic Landscape Belt

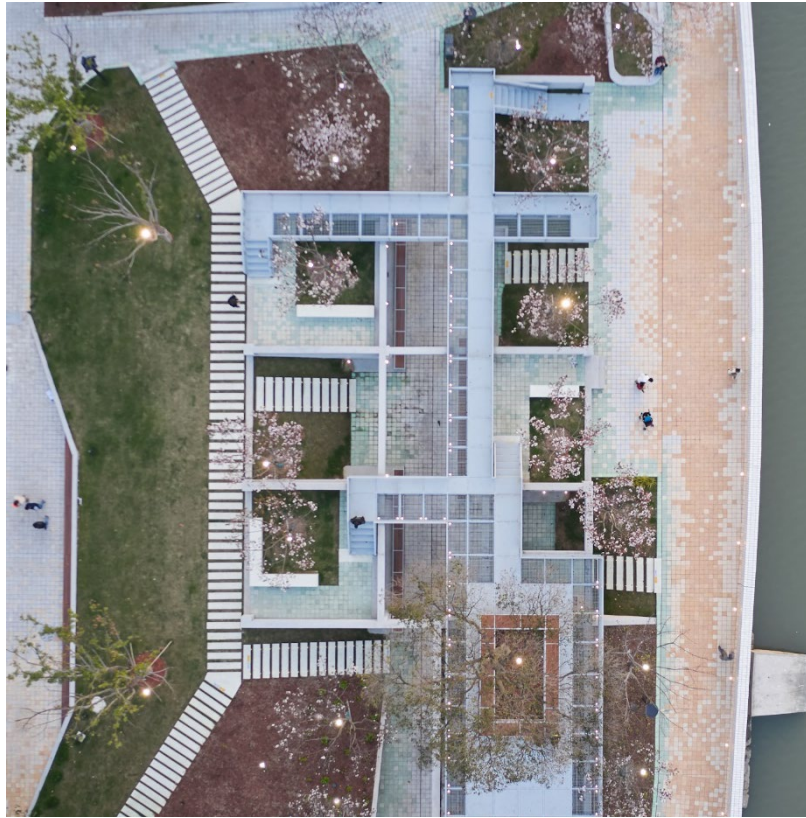


A Concentrated Shanghai Cultural Belt



A Composite Waterfront Fitness Belt

Innovative Project Design



• Systematic Architecture



• Layered History



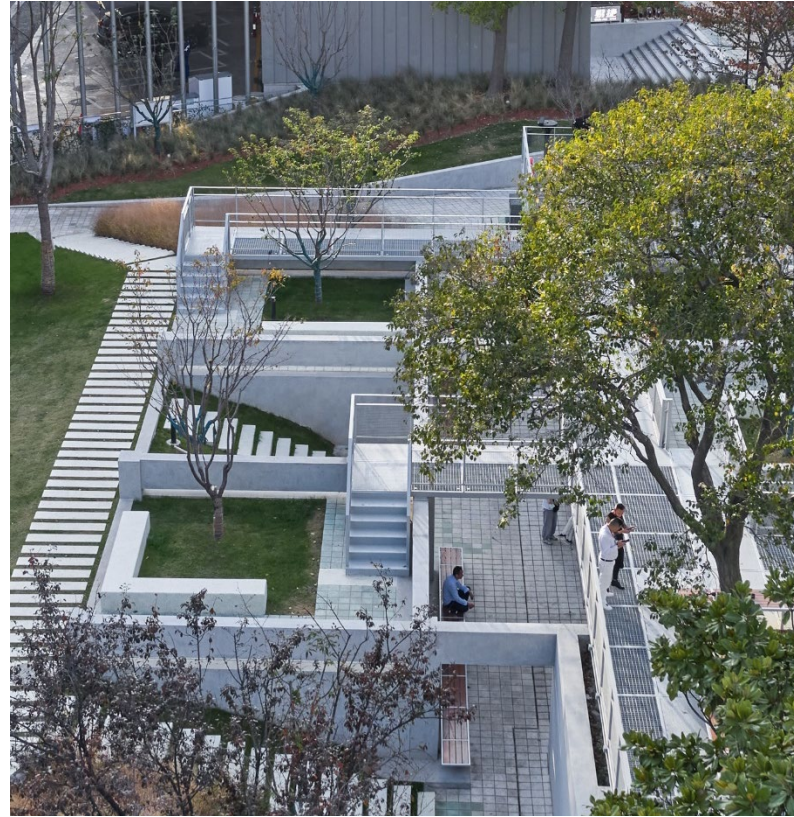
• Integrated Functionality



Innovative Project Design



• Interactive Waterfront



• Constructive Greening

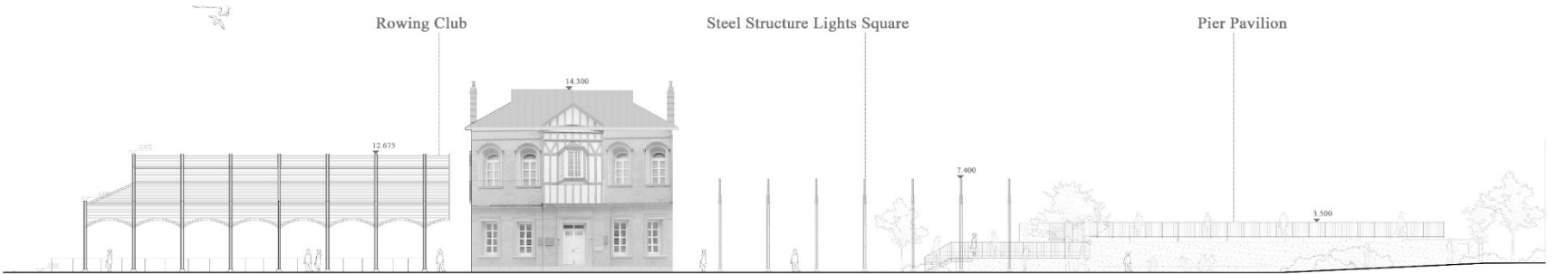
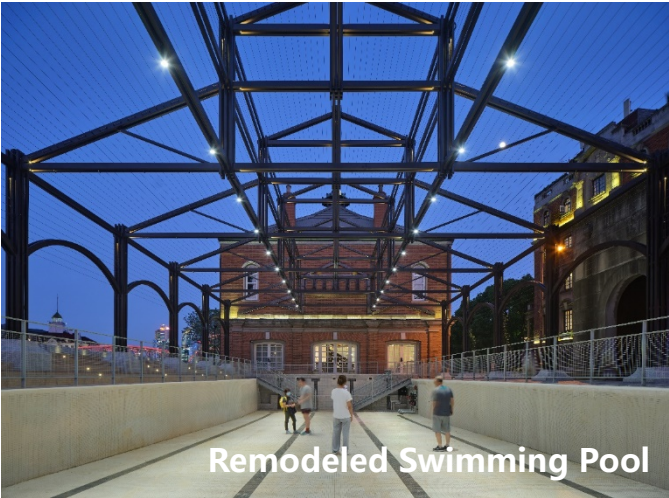


• Integrated Detailing





The Rowing Club



East Section 1 Elevation

The Rowing Club



Pier Pavilion



Demolished Highway with Preserved Pier



Pier Pavilion is Located along the Flood Control Wall of Suzhou Creek



Remaining Pier Structures with the Flood Control Wall



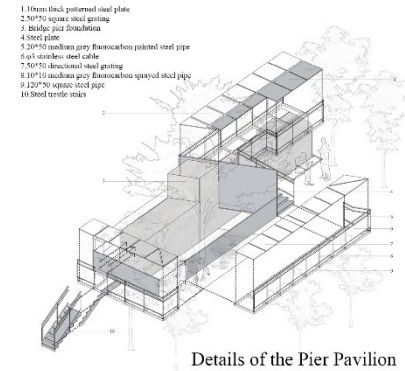
Pier Pavilion



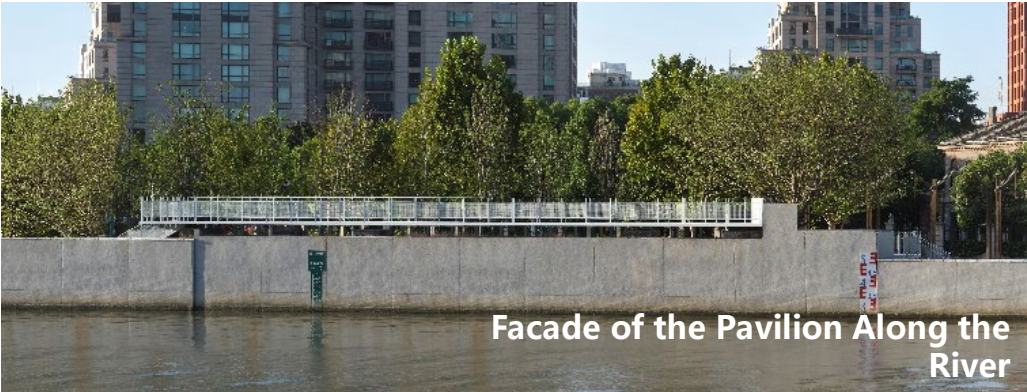
Looking at CBD from Pier Pavilion



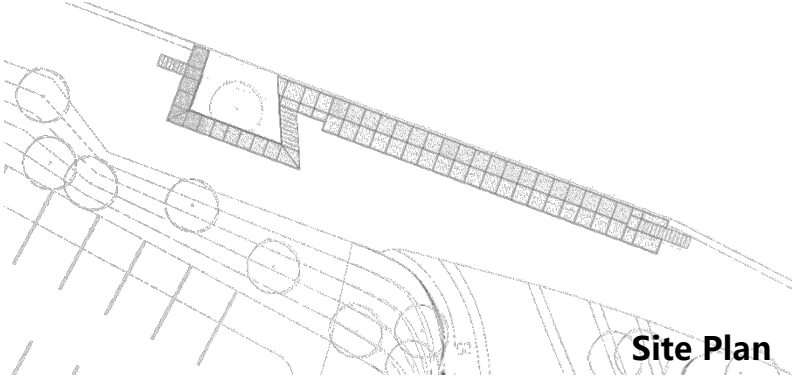
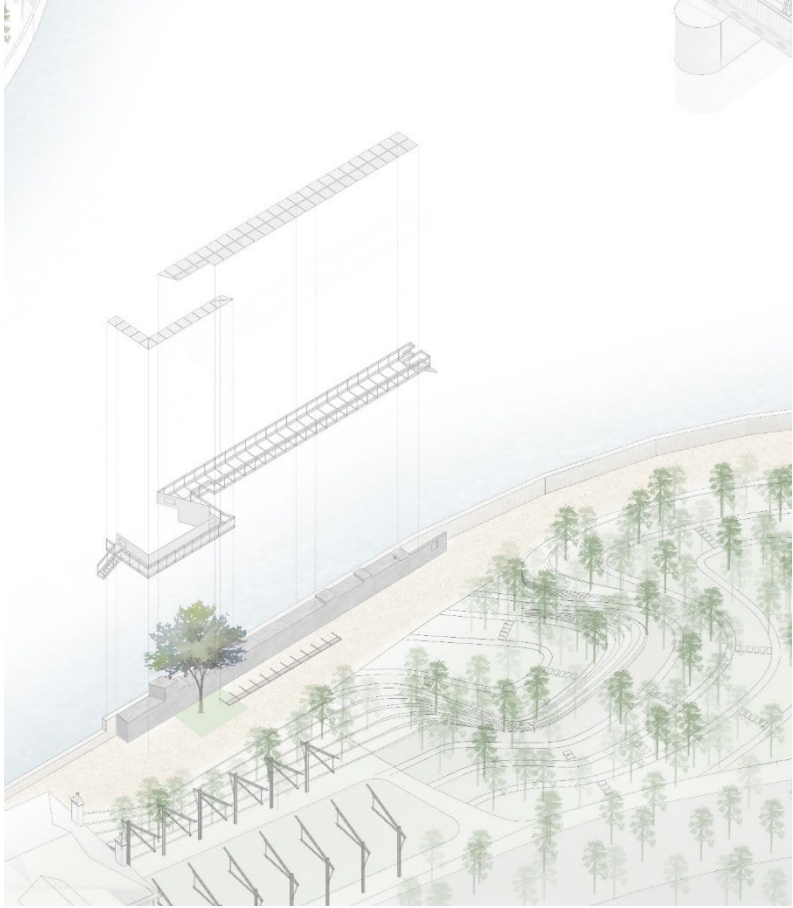
The Cantilevered Steel Long Pavilion Around a Tree



Details of the Pier Pavilion



Facade of the Pavilion Along the River



Site Plan

Leisure Station



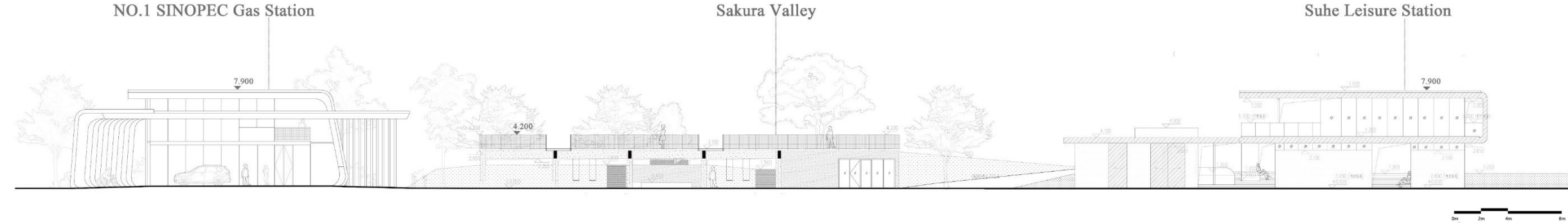
Before



After

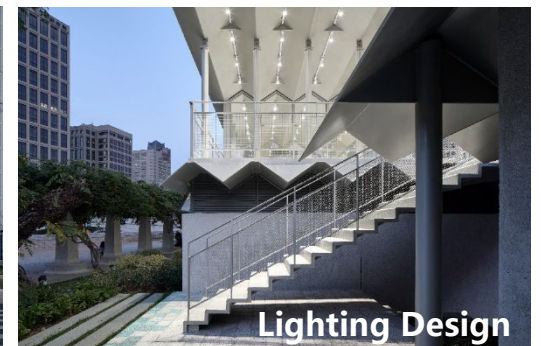
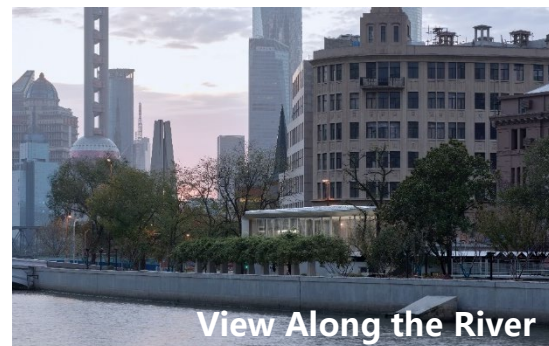
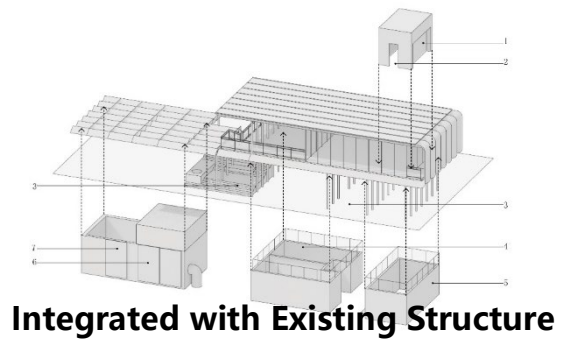


Vibrant Urban Life in Front of the Leisure Station

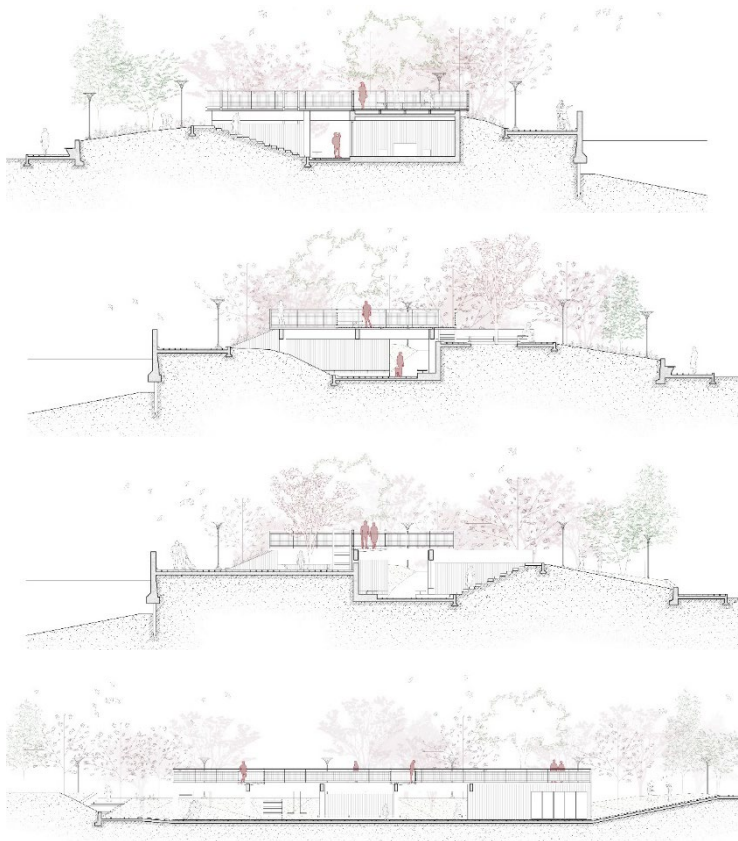


East Section 2 Elevation

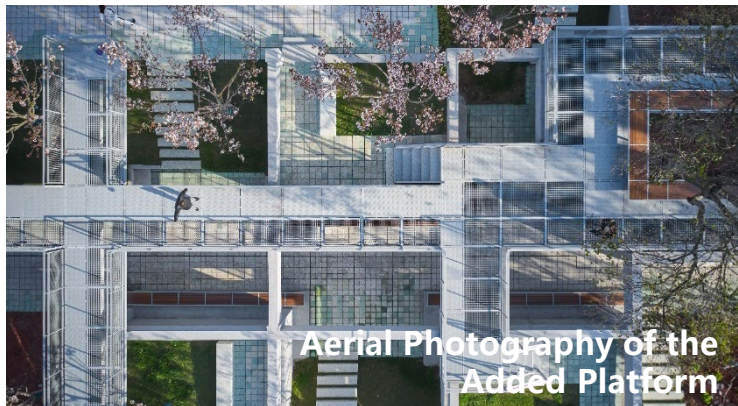
Leisure Station



"Sakura Valley"



A Bird's-eye View of Sakura Valley



Aerial Photography of the Added Platform



Before

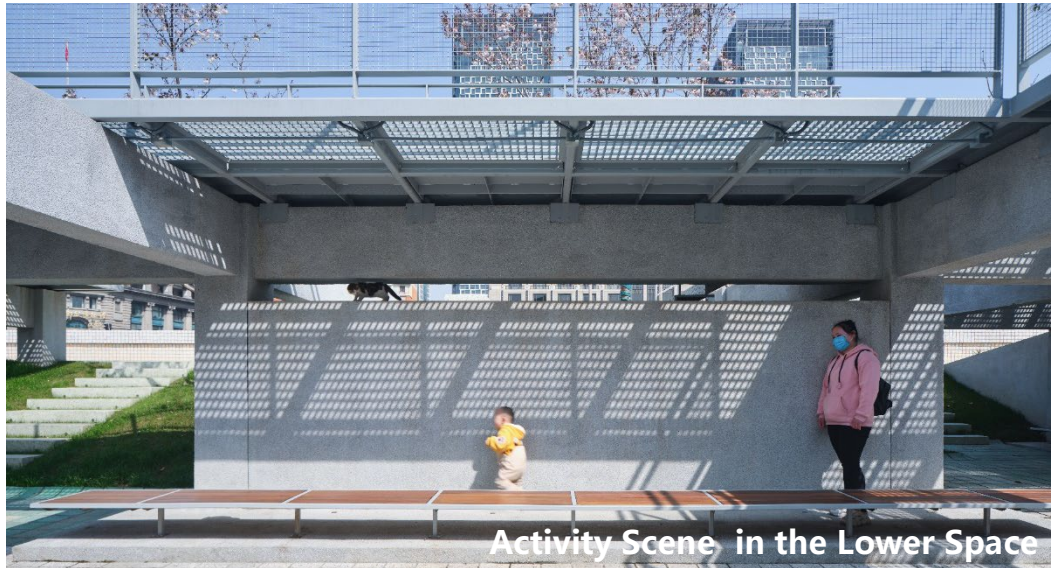


After

"Sakura Valley"



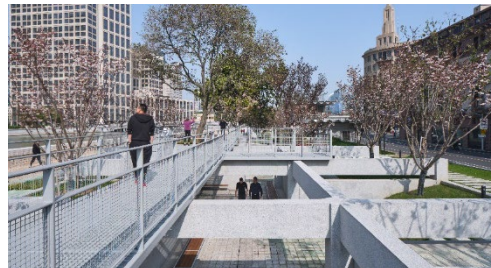
Activity Scene in the Upper Space



Activity Scene in the Lower Space

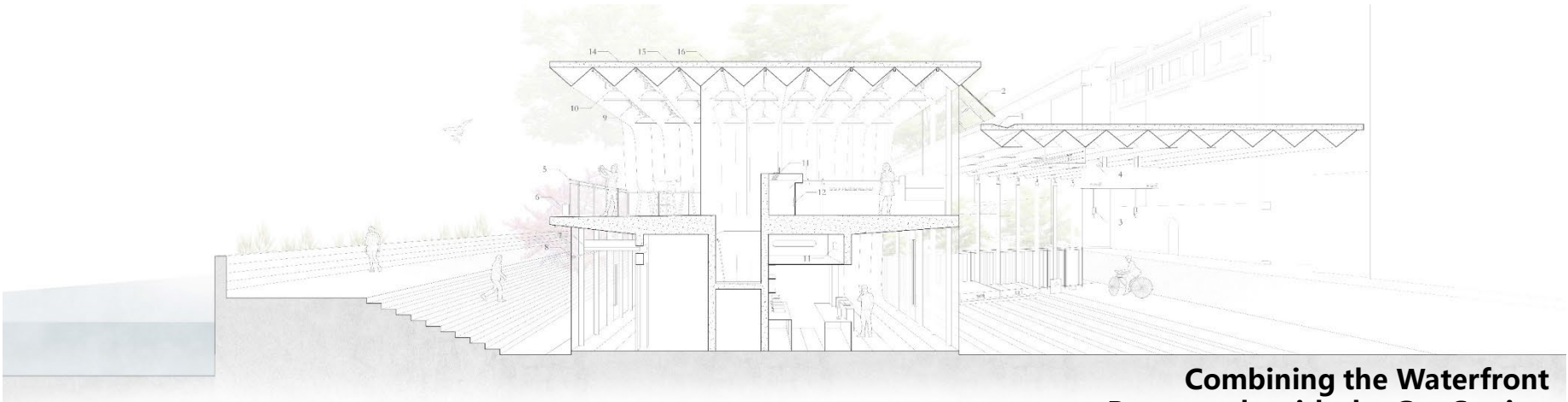
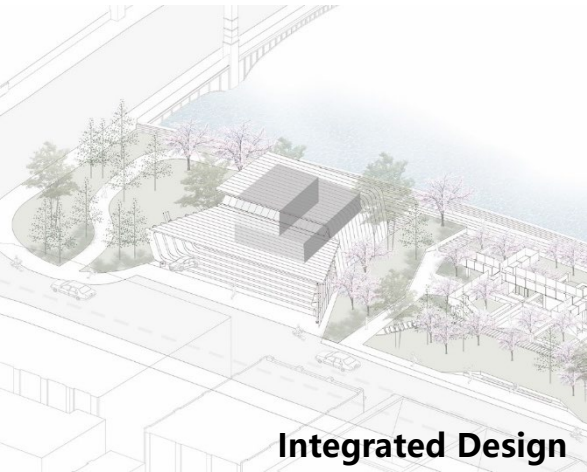


Landscape Intergrated with Building Structure

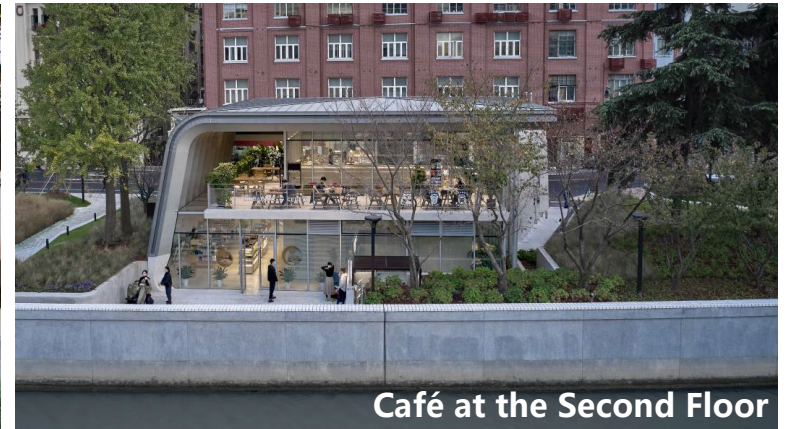


Platform of Upper Level to Enjoy Sakura and Suzhou Creek View

NO.1 Gas Station



NO.1 Gas Station



Sustainable Construction Details



a. Preserving and compactly utilizing existing structures on the site



b. Preservation of existing trees and restoration of preserved structures



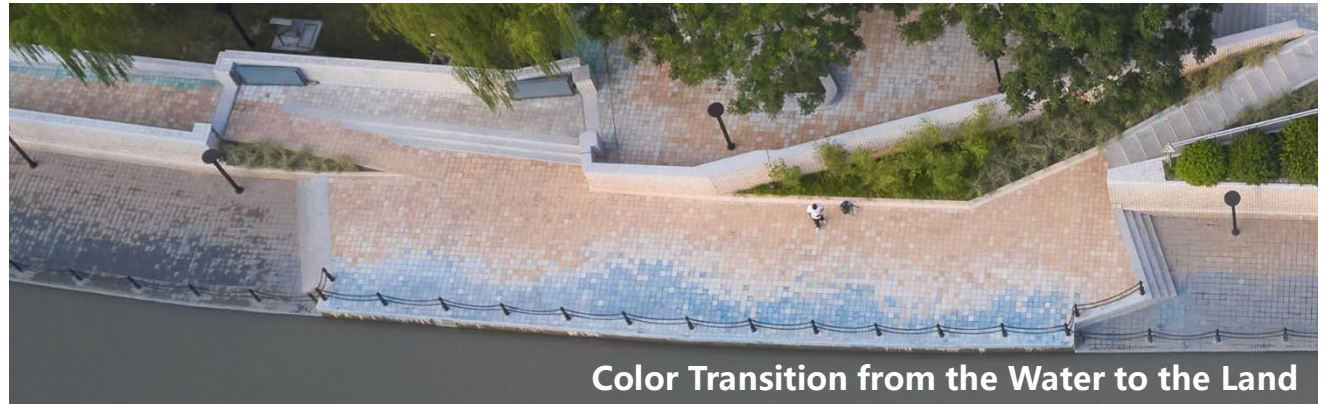
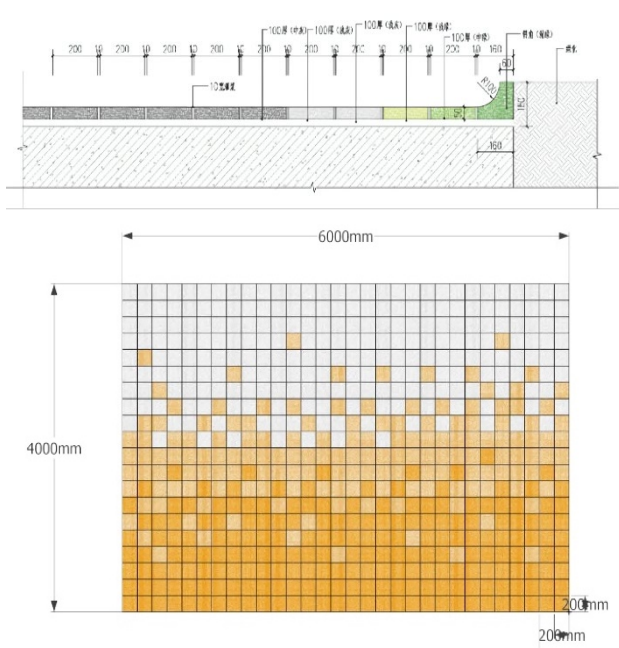
c. High quality riverfront public space to promote healthy living habits of public

a. Preservation and efficient utilization of existing structures on the site: The project maximizes the use of land and conserves resources by stacking the platform walkway on top of the bridge pier of the demolished Wusong Road Gate Bridge to form a meson pavilion. The steel structure frame is used to modernly recall the historical form of the rowing club and shelter the excavated swimming pool, which is repurposed as a sunken square. The original building structure frame is retained and transformed into a vertical Sakura valley by planting sakura trees. Additionally, infrastructure is utilized as amenities along the creek, including a cafe, leisure station, and viewing terrace.

b. Preservation of local trees and restoration of preserved structures: The abandoned maintenance gang house is opened up and its structural framework is preserved. Topographic ecological restoration is carried out, retaining all trees on the site and planting thematic plants to form a “vertical Sakura Valley” that cleverly creates diverse and ecological space experiences.

c. Promotion of healthy living habits through high-quality riverfront public space: The project, located at the confluence of Suzhou Creek and Huangpu River, has been upgraded into a continuous, permeable, and ecological riverfront “greenway”. It includes well-designed paving, rest amenities, and planting, becoming one of 46 kilometers of waterfront public space demonstrations on both sides of the Creek. This triggers leisure activities such as walking and jogging while enjoying wide open views along the river. It also attracts the public to reunite along the “Mother River” and adopt a low-carbon healthy lifestyle.

Paving Design



Color Transition from the Water to the Land

Socially Responsible Details

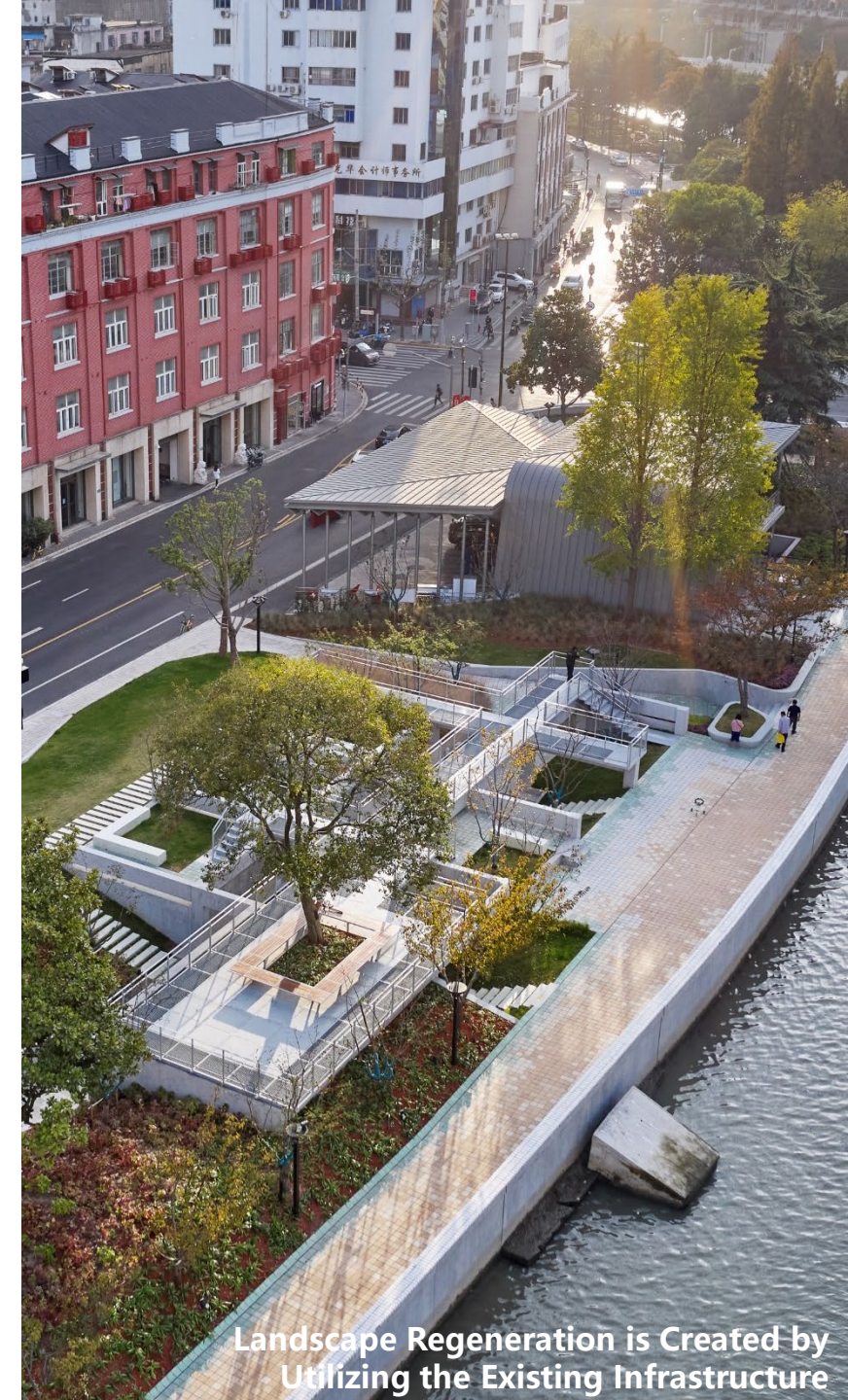


Activities around the Rowing Club



Leisure Programs above the Gas Station

- The core space, which was previously negatively enclosed, has been sorted out and opened up to rebuild the spatial connection with the city. This has created a public space that attracts **citizens of all ages and strengthens social fairness**.
- A sense of “**familiar strangeness**” is created through a series of detailed strategies that **awaken the city’s memories**. These strategies include the erection of a light pavilion facing the Oriental Pearl Tower, which activates the former piers; the excavation of an old swimming pool to create a sunken square sheltered by a permeable steel framework in retrospective forms of the historical building; the creation of colorful glass terrazzo mosaic outdoor pavement; the revival of “Shanghai cement” ; and the fixing of pool porcelaneous mosaic. These strategies take into account local **cultural memories, contemporary functional development, and sustainable development requirements**.
- **A new cityscape is created by utilizing infrastructure in a landscape architectural way**. The gas station is integrated with a landscape cafe function, while the pump house and trash compactor station are integrated with leisure functions. The former maintenance gang house is opened up and integrated with thematic plantation, enhancing use efficiency and inspiring innovative forms to create unique spatial experiences.



Landscape Regeneration is Created by Utilizing the Existing Infrastructure

User Experience and Feedback

The project fully satisfies the waterfront life requirements of the “Shanghai style scroll” in many aspects **such as city image, daily activities, and holiday recreation.** Overlooking CBD and The Oriental Pearl Tower, the waterfront space at the core of the Bund has been transformed into a **“colorful living room of the city.”**

Several urban events have been successfully hosted, including “Macau Week,” “2021 Shanghai International Rowing Invitational Tournament,” and “New Year’s Eve at the Bund,” enhancing the competitiveness of the city. The high-quality public space has **attracted residents and office workers from surrounding communities**, establishing a daily leisure waterfront lifestyle. **Tourists from all around Shanghai and even China** have seen this featured project, with its gas station cafe, rowing club pool square, and Sakura valley, as a hot spot and sometimes a “stage” for spontaneous fashion activities.

Photos on Social Media

