

# ***From Solo To Ensemble***

City Symphonic Stage Taking Rose As The Keynote





# CONTENTS

- Project Statement
- Project Narrative
- Project Background
- Master Plan
- Classification Of Chinese Rose
- Urban Resilience
- Green Engine
- Aerial View
- Entrance
- Chinese Rose Display
- City Stage
- Human Activities
- Traditional And Modern Architecture





## PROJECT STATEMENT

The project, located in Nanyang Urban-Rural Integration Demonstration Zone, drives the rapid and high-quality development of the surrounding district as **a green engine**, connecting the old city and the new district.

It breaks through the common mode of botanical garden and turns into **an open and sharing multifunctional park**. Various elements ensemble in this urban symphonic stage taking Chinese rose as the keynote.

Its construction has promoted a healthy urban hydrological cycle and contributed to biodiversity conservation, greatly enhancing the **urban resilience**.





# PROJECT NARRATIVE

## 【Location】

Project is located in Nanyang Urban-Rural Integration Demonstration Zone.

## 【Scope and Size】

Project is located in the south of the rose avenue, crane road, east of the airport north road, north of five east Nanyang rose garden junction area to surround close together. With a total area of about **920000** m<sup>2</sup>.

## 【Background】

Planning urban road network layout is clear, convenient. Relying on the perfect traffic system and city's main function to carry on the organic connection. On the north part of the site is the Chinese rose avenue, while on the south of it is the airport north 5<sup>th</sup> road, the west side is white river road. As the bridge, Yangtze River and Yellow River goes across the garden.

Green space system planning in the area surrounding the site planning of Baihe national wetland park and the Chinese rose garden. White river wetland park, white river on both sides of the landscape and Chinese rose garden constitute a subprime ecological corridor, the project is a connection point of it, which needs an overall consideration to realize the blueprint of " The city green, half city water ".

## 【Design Strategy】

Follow the people-oriented idea, take food, accommodation, travel, shopping and entertainment as the core, create a comprehensive destination integrating health/culture/entertainment/business/leisure. The park as a whole forms a structure of one axis, one center, two lakes and multiple points. In material place, the tour sequence is from the White River to the central water belt of the Tsukki East Garden. The landscape construction is carried out around five major content sections: urban vitality area, static viewing area, theme exhibition area, waterfront activity area and wetland experience area.

## 【Design Intent】

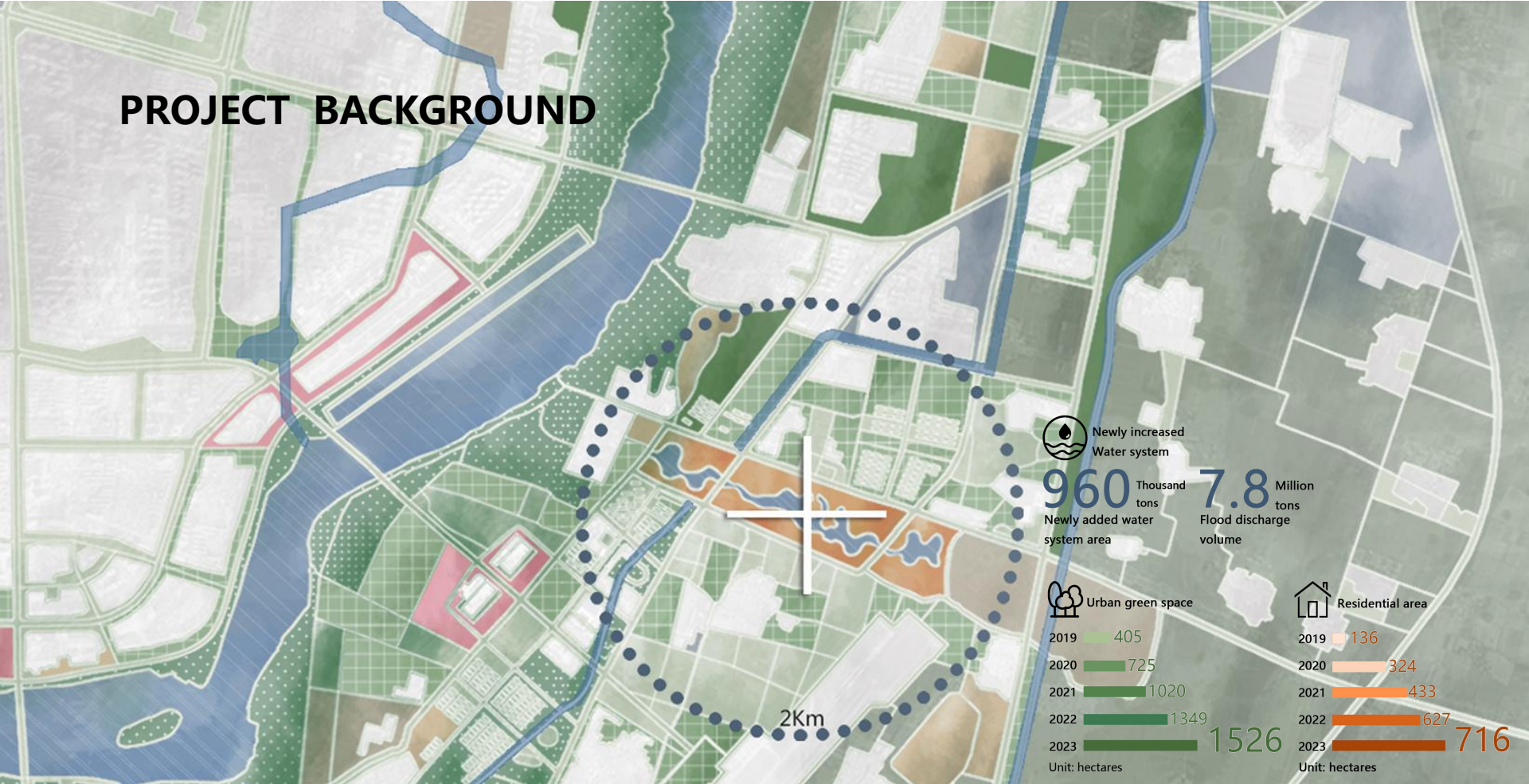
The connection and integration of the East-West Park will also become an urban streamer and green engine that drives the urban development of the demonstration area.

## 【Environmental Impact and Concerns】

The construction of the West Park of Yuejiyuan will stir up ripples in the Nanyang Urban and Rural Integration Demonstration Zone, the connection and integration of the East-West Park will also become an urban streamer and green engine that drives the urban development of the demonstration area. The construction of Yueji Garden not only brings visual impact and sensory enjoyment to the urban construction, but also transforms the surrounding area into a golden chrysalis butterfly, carrying the diversified functions of "Yijing", "Yi Live" and "Yi Shang", transforming the existing city into a green new city. Built with high-speed, nanyang, expand regional influence, Chinese rose garden will become the city tourism and the external image of the window. Chinese rose west park ecology, culture, landscape, service as the core plate and forms a line connecting the Chinese rose garden east landscape axis, echo each other at a distance of baihe national wetland park, forming a set of complete ecological system with local characteristics.



# PROJECT BACKGROUND



## [SITE]



**Nanyang** is located in the southwest of Henan Province and the border of Henan, Hubei and Shaanxi provinces. It gets its name because it is located in the south of Funiu Mountain and north of Hanshui River.

**The demonstration zone** of integration of urban and rural areas is located in the south bank of Baihe River in Nanyang city center. It is a composite functional area that embodies the overall development of urban and rural areas, industrial coordination and industrial and urban integration.

## [SCOPE]

The project is located in the area enclosed by the **south** of Rose Avenue, the **east** of Baihe Avenue, the **north** of the fifth Airport Road and the junction of Rose East Garden in Nanyang.

## [SCALE]

The total area is about **920000** m<sup>2</sup>.





# PROJECT BACKGROUND

## [NANYANG & CHINESE ROSE]

Comprehensive parks with Chinese roses as the theme are widely distributed in the world. Beauty mainly reflects the sense of ritual, and is closely related to life.

**New Ziglan** mainly reflects pastoral scenery, close to nature;

**The French** are romantic and delicate, reflecting the sense of atmosphere;

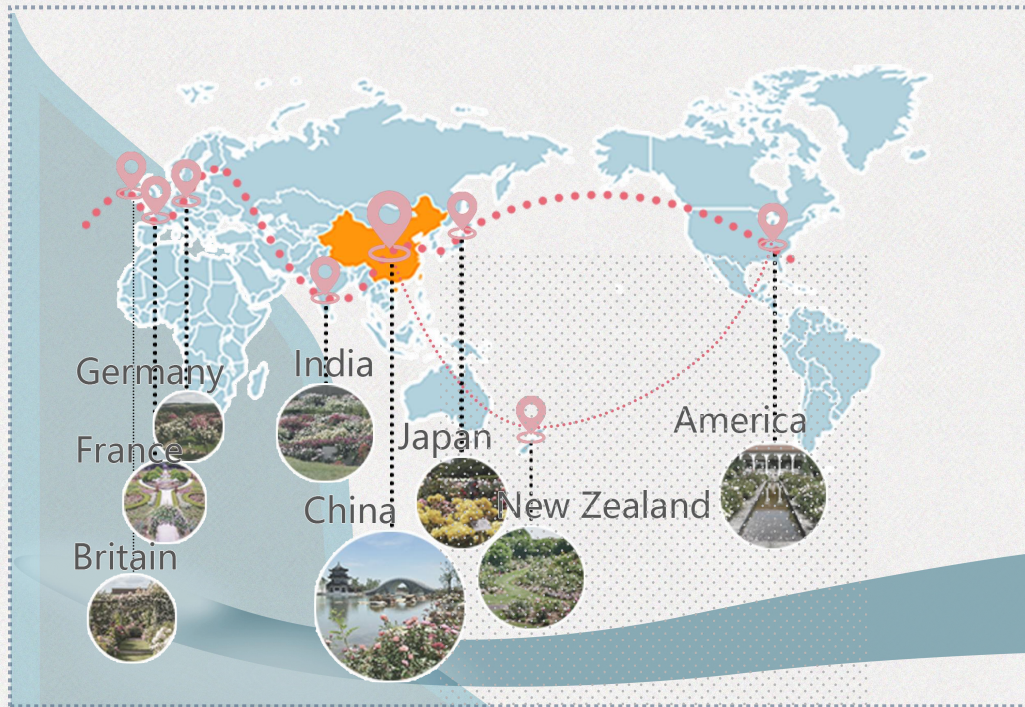
**The British** mainly reflect the sense of gravitas and rules;

**The Germans** mainly reflect the pure and elegant;

**The Japanese** mainly reflect the exquisite;

**The Indians** mainly reflect the colorful;

**The Chinese** mainly reflect the elegant "atmosphere", profound cultural heritage.



### City Flower

Early in 1995, the rose was named the city flower by the Nanyang City government



### The Land Of The Rose

In 2000, Nanyang City was named "the Hometown of Chinese Rose"



### WFRS Regional Convention

The venue for the 2019 WFRS regional convention



### Rose Exhibition

The Opening Coremony of the First International Rose Exhibition in 2023





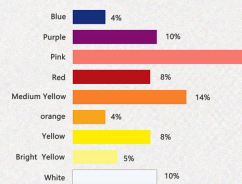
# MASTER PLAN

The project is located in an area enclosed by the south of Rose Avenue, east of Baihe Avenue, north of the fifth Airport Road and the junction of Rose East Garden in Nanyang. The total area is about 92 hectares. Follow the concept of people-oriented, with food, accommodation, travel, shopping and entertainment as the core, to create health, culture, entertainment, business, leisure integrated comprehensive destination. The park as a whole forms a structure of one axis, one heart, two lakes and more points.

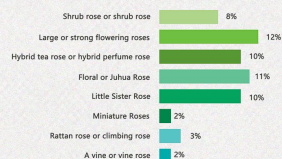
- 1. Entrance Square
- 2. Honeycomb Shaped Observation Deck
- 3. Sunny Beach
- 4. Sports Centre
- 5. Southwest Entrance
- 6. Sakura
- 7. Sunshine Pier
- 8. Blossom Garden
- 9. Family Centre
- 10. Herb Garden
- 11. Sunny Lawn
- 12. Riverside Boardwalk
- 13. The Main Entrance Square
- 14. Chinese Rose Island
- 15. Riverside High Street
- 16. Lookout Lake Pavilion
- 17. A Sea Of Chinese Roses
- 18. Blooming Flowers Square
- 19. Sun Lawn
- 20. Rest Area
- 21. Green Pines And Cypresses
- 22. Spongy Grass Theater
- 23. Garden Planning Exhibition Hall
- 24. Wetland Exhibition Hall
- 25. Peach Blossom Waterfront
- 26. Full Moon Square
- 27. Winding Bridge
- 28. Wetland Entrance
- 29. Waterfall Hemmed In Flowers
- 30. Shady Garden
- 31. Lounge Bridge
- 32. Profusion Of Roses
- 33. Checkerboard Square



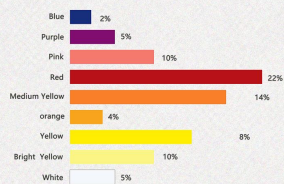
# CLASSIFICATION OF CHINESE ROSE



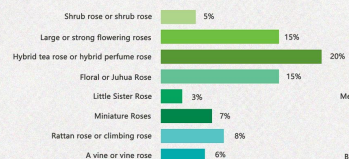
Rose flower color and proportion



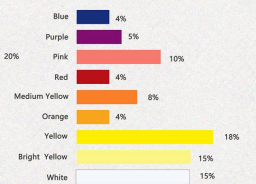
Classification and proportion of rose



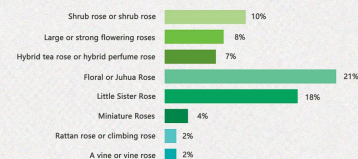
Rose flower color and proportion



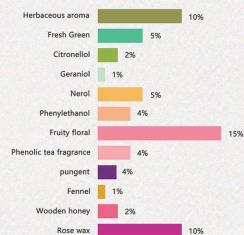
Classification and proportion of rose



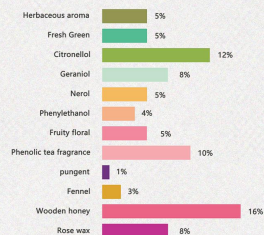
Rose flower color and proportion



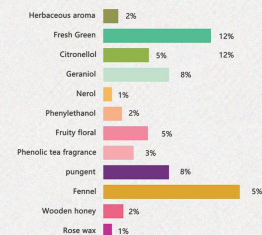
Classification and proportion of rose



Rose fragrance and regional content



Rose fragrance and regional content



Rose fragrance and regional content



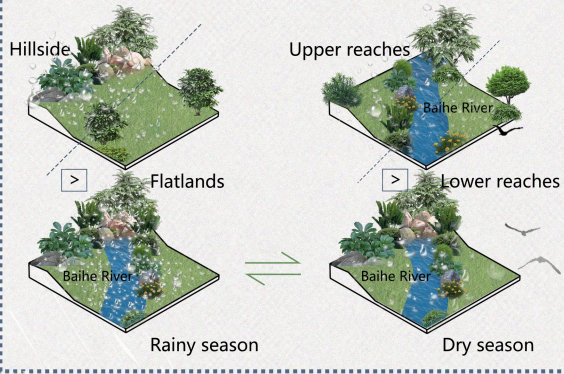


# URBAN RESILIENCE

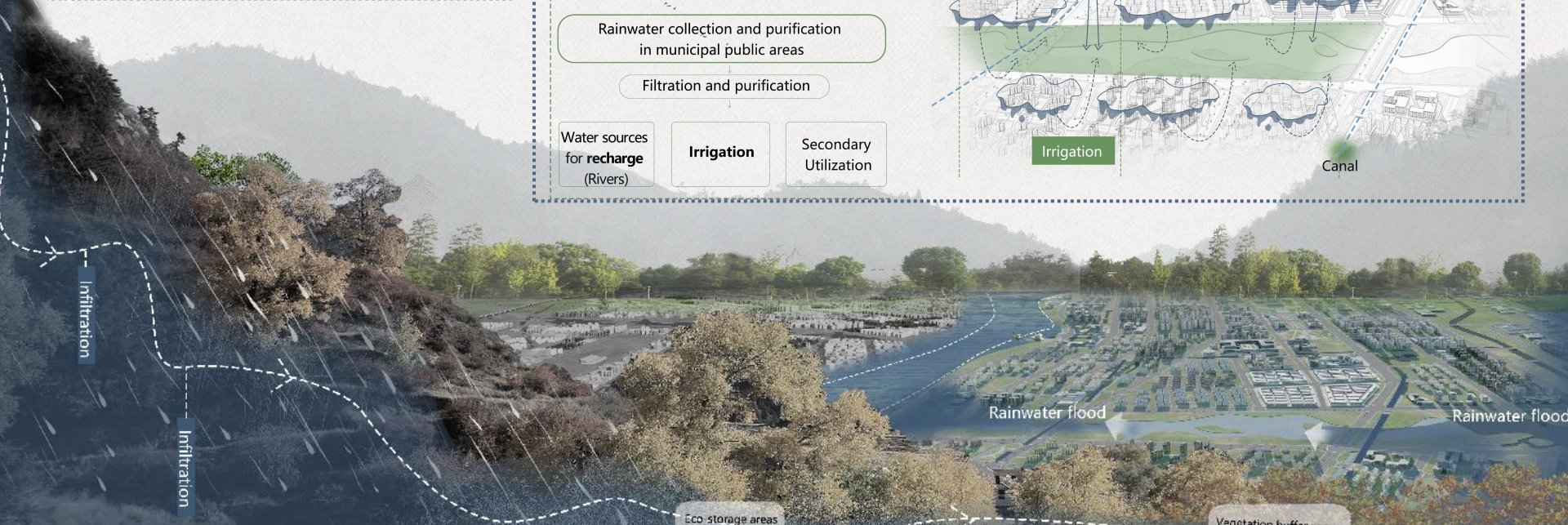
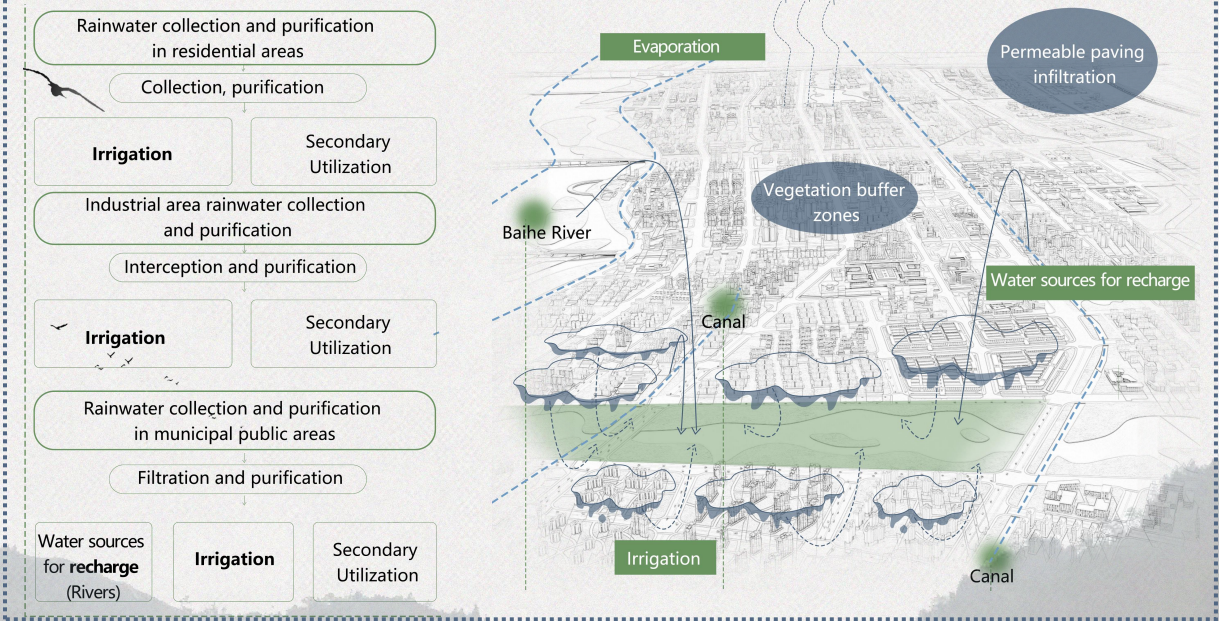
With the global climate getting warmer and warmer, extreme weather is occurring frequently around the world. For example, the heavy rain has been causing floods in many parts of the country. However, it could be an opportunity for us human beings. Nanyang City gives us an example of how it took advantage of the rainfall to stand the so-called "useless" water within the city.

According to official reports, the plains of Nanyang City and the lower reaches of the Bai River are more prone to rain and flooding.

### [Precipitation Analysis]



## [Urban Park Sponge System Analysis]

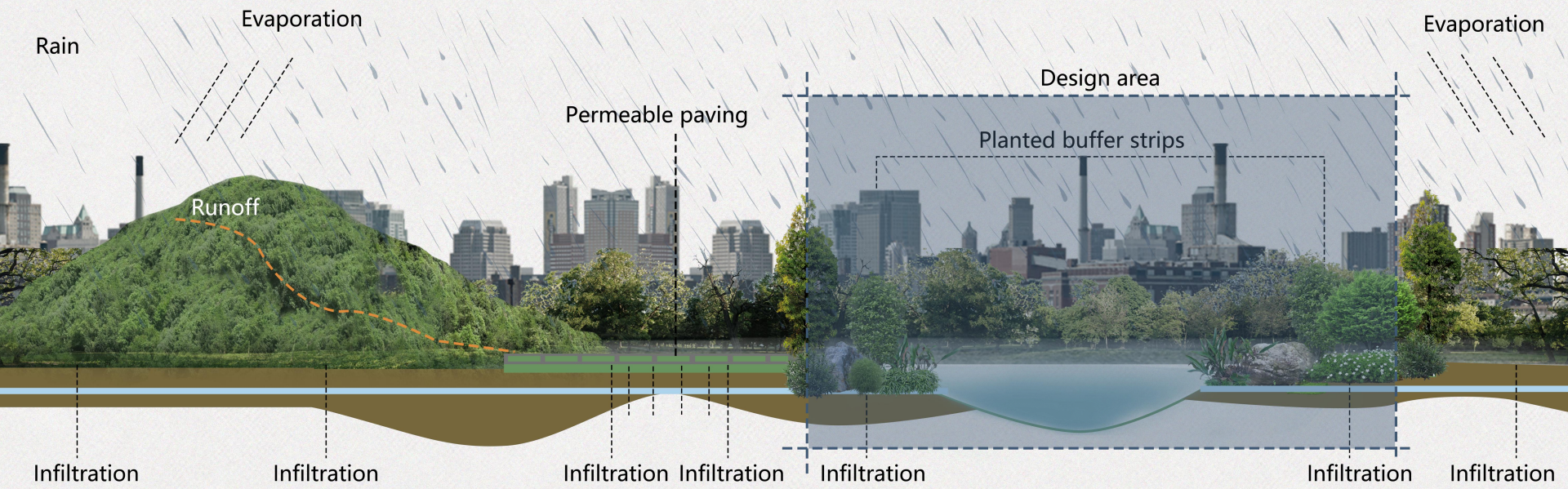




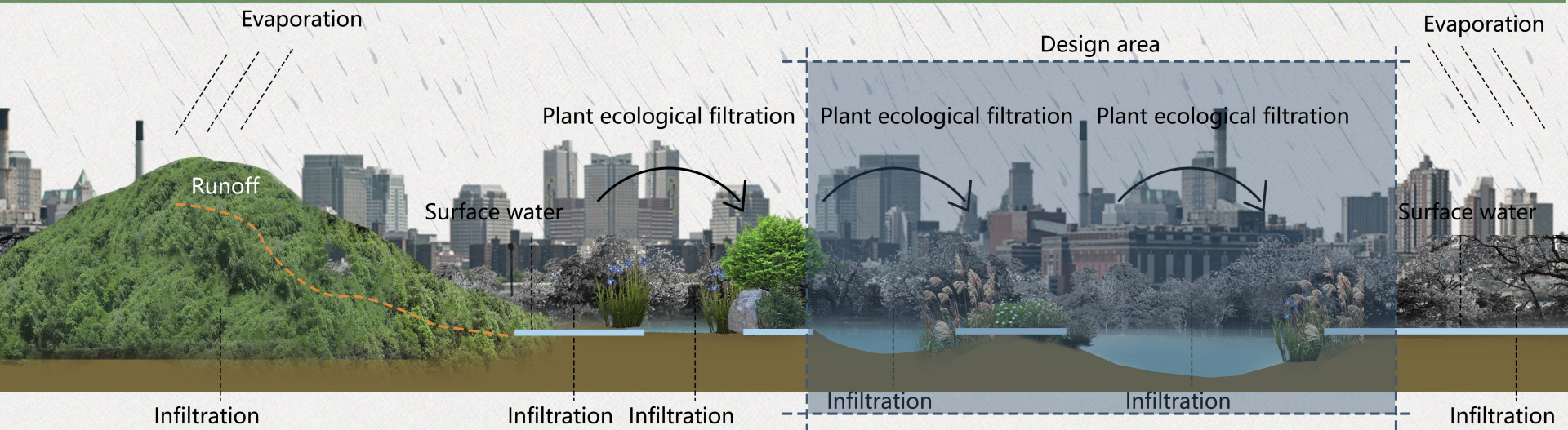
# URBAN RESILIENCE

Increase the permeability of the land using measures such as permeable paving

[Sponge City Land Analysis]



Use plants and other measures to filter and purify water

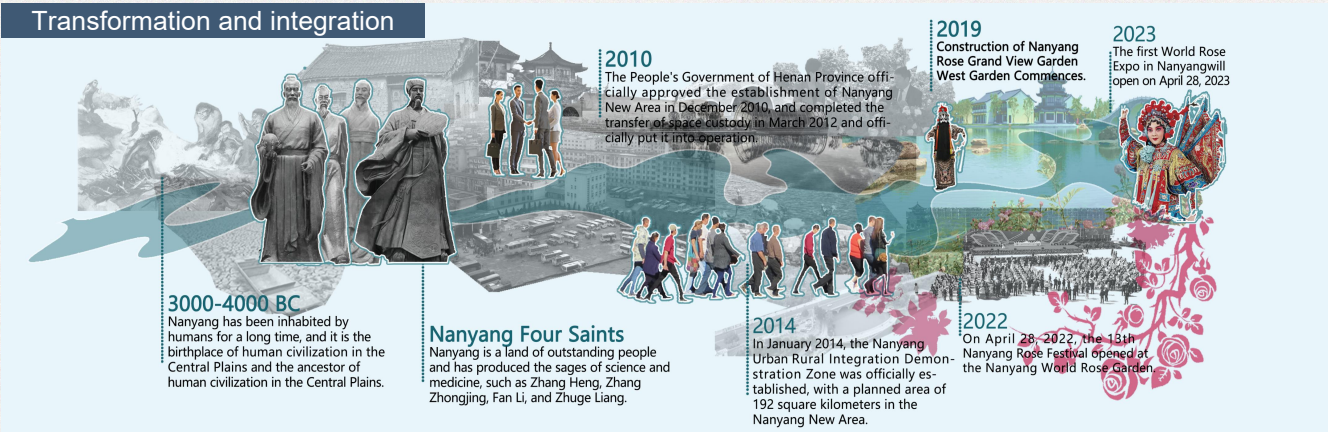




# GREEN ENGINE

After completion, the surrounding area takes on a new look, carrying the diversified functions of "scenery", "residence" and "business", transforming into a green new town.

## Transformation and integration



BEFORE

**WILDERNESS**  
**TRANSPORTATION**  
**SLUMS**  
**ROSE INDUSTRY**  
**POPULATION**

NOW

## Regional changes



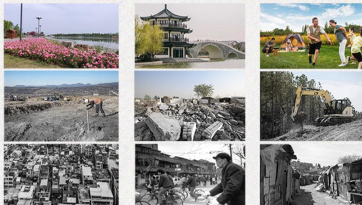
**Project Scope** Nanyang has become a large city with a population of over 10 million. The development of cities has made the relationship between humans and nature increasingly tense. The project is located in the eastern suburbs of the city, with backward rural areas, polluted and congested rivers, and constantly spreading slums, which pose great obstacles to the development of the city.

**Residential Community**

**Park Green Space**

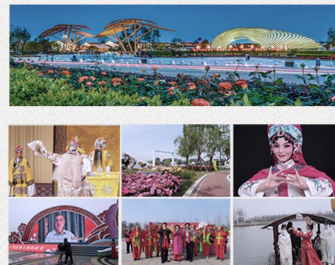
**Public Service Institutions**

**Slums**



## To culture

Henan Yu Opera is mainly popular in Henan Province, spreading traditional dramas from various parts of China and being one of the national intangible cultural heritage. Traditional cultural performances are often held here, enriching the residents' taste in life.



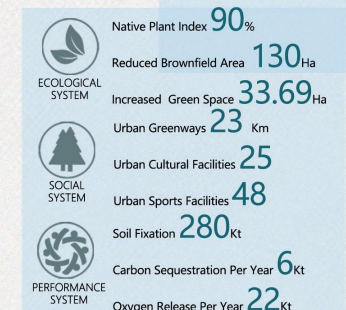
## To economy

With the construction of the project, 30000 job opportunities have been directly and indirectly added; Directly and indirectly driven nearly 20 billion yuan in investment; It has promoted the vigorous development of 12 industries, including electronic information, energy conservation and environmental protection, green building materials, green food, automotive manufacturing, biomedicine, modern light textile, new materials, and equipment manufacturing.



## To nature

The Plan has realized the site-specific management of landscape resources and fully released the ecological benefits of green spaces.





# AERIAL VIEW



As a new landmark of the city, the West Garden of Chinese Rose Garden forms a landscape axis with the main garden of Chinese Rose Garden. The White River runs through it, forming a local landscape belt and becoming the vitality center of the region.



# ENTRANCE

The main entrance adopts arched steel structure main truss, named "Swallow Homing Nest", to welcome every visitor here, hoping to become an indispensable part of the residents' life in Nanyang New City.





## CHINESE ROSE DISPLAY

As with Chinese rose as the theme of comprehensive park, west park with all kinds of rich Chinese rose varieties, in the provision of ornamental value, also provides the popular science education, making it the old - terrific landscape belt between new district.





# CITY STAGE

Build the city stage as an important hub for citizen's communication and entertainment, at the same time be the vitality core of the area.





# HUMAN ACTIVITIES

As a green engine in the surrounding area, the Chinese Rose West Park has become a host of numerous large-scale events, and has also attracted various tourists from home and abroad.





# TRADITIONAL AND MODERN ARCHITECTURE

Ancient buildings and modern structures are standing on different sides of the river with a bridge connecting them. Tourists shuttle between two sides, feeling the collision of ancient and modernity.

