



# Contemporary Translation of Traditional Landscape Spatial Prototype

## Design of Peach Blossom Lake Park



**Project name:** Contemporary Translation of Traditional Landscape Spatial Prototype——Design of Peach Blossom Lake Park

**Project address:** Hangzhou City, Zhejiang Province, China

**Area :** 200,000 square meters

**Category:** Culture and Traditions

## PROJECT STATEMENT

Peach Blossom Lake Park is a landmark project located in the core block of Dinglan New City, Hangzhou, Zhejiang province. The project is positioned as the backyard of the large urban residential area, with a total land area of about 200,000 square meters. Based on the local cultural heritage of "peach" inherited from the Song Dynasty to the present day, the park takes the concept of "A Dreamy Peach Paradise with Traditional Landscape Imagery" as the basis for its creation. The park is designed to be a peach culture themed park through the strategies of "the overall layout referencing traditional Chinese landscape paintings, the planting landscape space highlighting the culture of native plants, the three-in-one water purification system and the sponge city technological system, and the multi-function spaces that benefits the city public".

After the completion of the park, with its unique landscape resources, the area has attracted many commercial complexes, with an average of 50,000 visitors a day, which opens a new pattern of "park+commercial" development in the surrounding area. It also won the "19th Asian Games Carbon Neutral Forest", Hangzhou's "Newly constructed Beautiful Park", "The Most Beautiful Greenway in Hangzhou", "Quality Comprehensive Park" in Zhejiang Province in 2023, and many other honors.



# PROJECT NARRATIVE

## 1.CONTEXT

It is a landmark project located in the core block of Dinglan New City, Hangzhou, Zhejiang. The area is positioned as the backyard of the large urban residential area. It is designated as park green space and a parking lot with cultural facilities in urban planning.

Bordered by Gaoting Mountain to the north and Shangtang River to the south, the park is blessed with natural resources. Gaoting Mountain, known for its “peach culture”, gave birth to Hangzhou’s unique civilization. The custom of “viewing peach flowers on Gaoting Mountain” in Hangzhou dates back to the Song Dynasty, and is carried on to this day. On the basis of local cultural characteristics, this park integrates the inherited regional characteristics and the lives of citizens, and is named “Peach Blossom Lake Park”.

The park covers a total area of about 200,000 square meters, with a total building construction area on the ground of about 25,000 square meters. The water area is about 46,000 square meters, and the green area is about 130,000 square meters.

## 2.DESIGN CONCEPT

A Dreamy Peach Paradise with Traditional Landscape Imagery

By incorporating the landscape of surrounding hills and the existing waters, a sight-gallery from north to south is constructed, which connects the park and the urban landscape. The design emphasizes building a comprehensive urban culture park with multiple functions characterized by connection with mountain and waters, green space, culture, intelligence and innovation.

## 3.CORE STRATEGIES

### (1) Strategy I: Overall layout based on Chinese traditional landscape painting

- Conception: The overall layout is designed based on the poetic landscape imagery depicted in the poems and paintings in the Song Dynasty, incorporating the core scenic spots of “Two Peaches’ Spring Outgoing” and “Former Peach Flower Viewing Site of Emperor Gaozong” and other ten scenic spots including the “Dingqiao Bridge”.
- Layout: The park incorporates the landscape of Gaoting Mountain with its waters. On the north side of the park, the highest point of the park is constructed by taking advantage of topographic adjacency to the towering Gaoting Mountain, thereby integrating the views of the park into the urban landscape.



- Water Feature: Water is diverted into the park and connected as a whole. While guaranteeing the needs for flood discharge, rich water systems consisting of “stream, river, lake, island, and pond” is constructed, which creates a deep and rich shoreline space such as lake, green hinterland, cultural buildings, and city.
- Structure: Proceeding from the traditional reserved and composed cultural artistic conception, the overall style of the park is designed by combining the simple Song style with the local characteristics of dwellings Zhejiang-style houses, and organizes and connects the elements of mountain, waters, trees, stones, and roads, etc.

## **(2) Strategy II: Three-in-one water purification system and sponge city technology system**

- Sponge city technology system: In the construction of the park, the sponge city concept of “seepage, stagnation, storage, purification, utilization, and discharge” was adopted. The main measures included sinking of green spaces, structural permeable paving, use of permeable bricks and asphalt, drainage ditches with gravels, and landscape water system, etc. Rainwater is treated by various sponge ecological facilities in the park, and stored in the Peach Blossom Lake. The lake’s water ecosystem (submerged, floating, emergent aquatic plants, aquatic animals, microorganisms, etc.) is also used to purify rainwater. On sunny days, the water systems provide water for greening and irrigation of plants, which allows the recovery of rainwater resources. Therefore, the park was rated as a “typical case of sponge city construction in Zhejiang 2021” and listed as a “example of Hangzhou’s comprehensive promotion of sponge city construction” by the Ministry of Housing and Urban-rural Development.
- Three-in-one water purification system: The water area of the park is large, where different forms of water systems enrich the landscape hierarchies and interest. In order to ensure the excellent water quality of all water systems, the water is purified through “aquatic animal and plant ecological purification + park road integrated treatment technology + combined water circulation purification technology”. At the same time, water transparency observers, courtyard-type air-floatation water treatment device, and fountain aeration device, etc. have been added to provide a set of stable, efficient, and long-term water self-purification system for the Peach Blossom Lake, and all main indicators of water quality in the park have reached the Level-III standard of surface water.



### **(3) Strategy III: Shaping of a plant landscape space that highlights the local culture**

In the design, a lot of local materials were used. Through soil improvement, ecological restoration, and the shaping of diverse habitats, the use of local plants represented by peach trees reflects the ecologically and environmentally friendly nature of the project. Thousands of peach trees of about 20 selected suitable varieties were planted to create a “peach garden” that fully demonstrates the color, posture, and rhyme of peach trees in the traditional cultural artistic conception from multiple dimensions and scenes. With “peach trees” as the medium, a series of spaces with public popular science and diverse social functions have been created.

### **(4) Strategy IV: Creation of a vibrant green heart that benefits the city and the public**

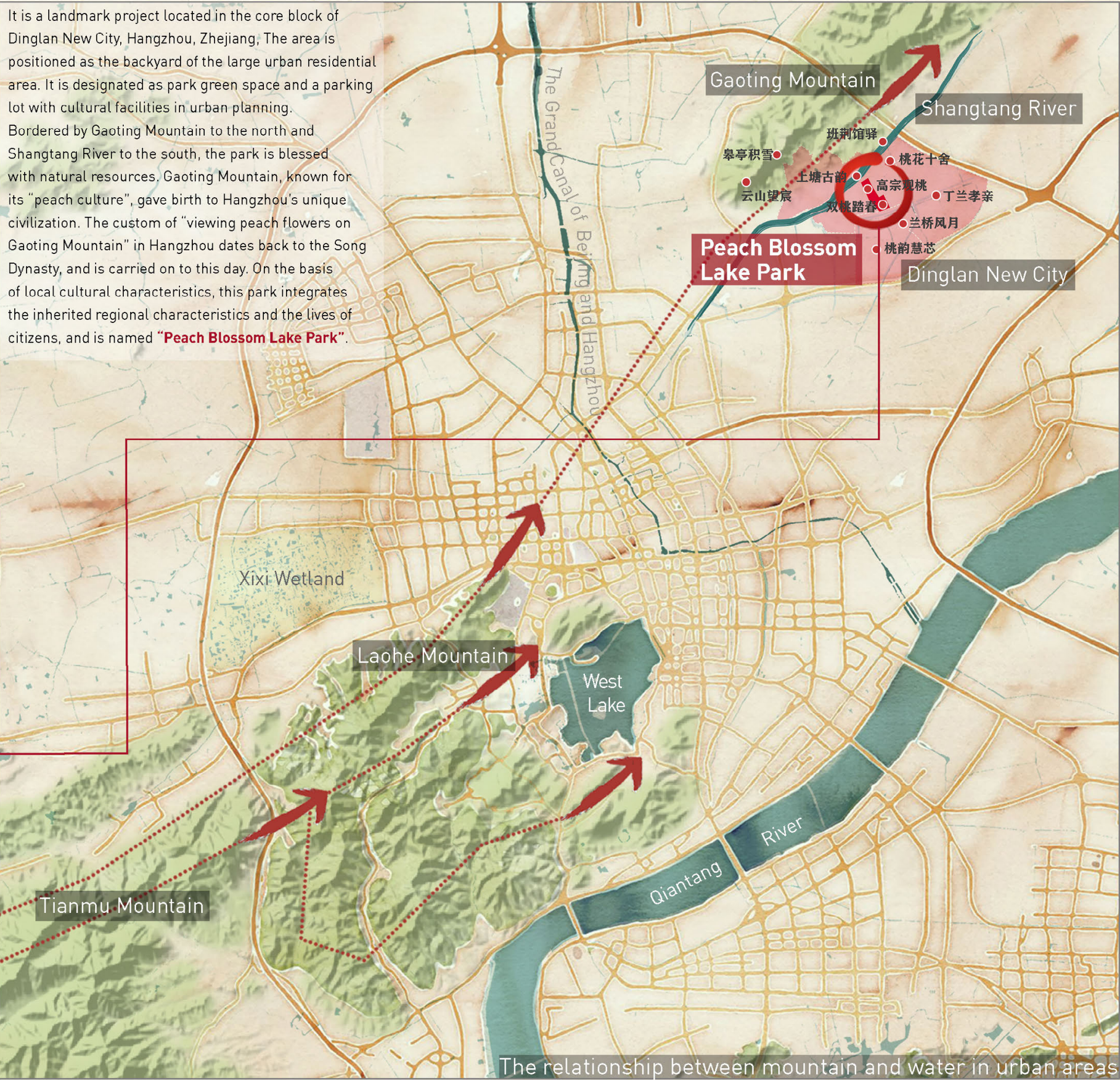
The Peach Blossom Lake Park integrates various urban service functions such as leisure, tourism, entertainment, cultural science popularization and fitness. Being an ecological and cultural park with composite urban functions, the park benefits residents in large areas nearby. They can enjoy the tranquility amidst the hustle and bustle of the city, and live a life “close to mountains, lakes, flowers and birds.”

## **4.ACHIEVEMENTS**

The design plan of the Peach Blossom Lake Park alone took 10 years, during which there were dozens of rounds of adjustments. After 4 years' construction, the park won many honors such as the “Carbon Neutral Forest of the 19th Asian Games”, the “Beautiful Park” in Hangzhou, the “Most Beautiful Marriage Registry in Hangzhou”, the “Citizen Lifelong Learning Experience Base” and the “High-quality Comprehensive Park” in Zhejiang 2023, and become a brand-new back garden of Hangzhou. Today, with its unique landscape resources, the area has attracted many commercial complexes such as Sam Member stores and Longfor Tianjie commercial block, with an average of 50,000 visitors a day, which opens a new pattern of “park+commercial” development in the surrounding area.



CONTEXT



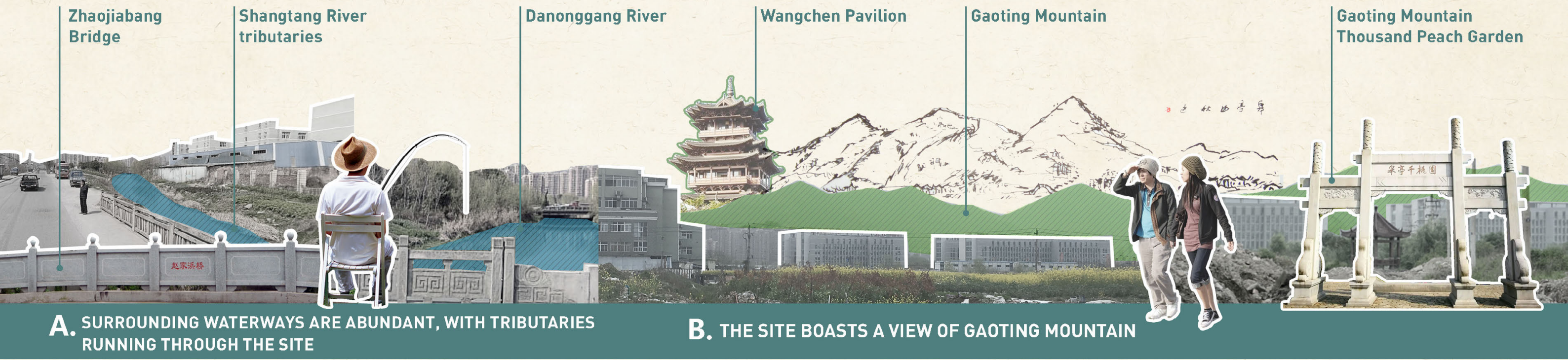
It is a landmark project located in the core block of Dinglan New City, Hangzhou, Zhejiang. The area is positioned as the backyard of the large urban residential area. It is designated as park green space and a parking lot with cultural facilities in urban planning. Bordered by Gaoting Mountain to the north and Shangtang River to the south, the park is blessed with natural resources. Gaoting Mountain, known for its "peach culture", gave birth to Hangzhou's unique civilization. The custom of "viewing peach flowers on Gaoting Mountain" in Hangzhou dates back to the Song Dynasty, and is carried on to this day. On the basis of local cultural characteristics, this park integrates the inherited regional characteristics and the lives of citizens, and is named "**Peach Blossom Lake Park**".

The relationship between mountain and water in urban areas



# EXISTING CONDITION

- **Convenient transportation:** The site enjoys an extensive public transportation system, with subway line 3 connecting to the main urban area, thus enabling better connection.
- **Complete supporting facilities:** The site is surrounded by hospitals, schools, sports and tourist centers, with complete supporting facilities for education, medical care and commerce.
- **Scenic spots:** 4A-level Scenic Spot Gaoting Mountain and Shangtang River (an important part of the Grand Canal, inscribed on the World Heritage List) fits with the site, helping gather popularity.





# DESIGN CONCEPT

## A Dreamy Peach Paradise with Traditional Landscape Imagery

**1 Peach Blossom Culture:** The theme of "Peach Culture" of the garden was inspired by the historical allusion of "Emperor Gaozong of Song admiring the beauty of peach flowers at Gaoting Mountain", and the present Thousand Peach Garden at Gaoting Mountain.

During the Southern Song Dynasty, peach trees were planted on both sides of Taohuawu at the foot of Gaoting Mountain. Every spring, peach blossoms form vibrant scenes like cloud brocades. Stunned by the beauty, Song Gaozong wrote poem reflecting the historical fact that the learned erudite people scramble to escape from the worldly life and live in seclusion in Gaoting.

During the Ming Dynasty, Hangzhou people had the custom of enjoying flowers in four seasons, such as "admiring Prunus flowers in West Lake, peach flowers at Gaoting Mountain, lotus at Lotus House, laurel in lakes and mountains, and chrysanthemums in Tea House". The peach blossoms at Gaoting Mountain have thus gained fame.

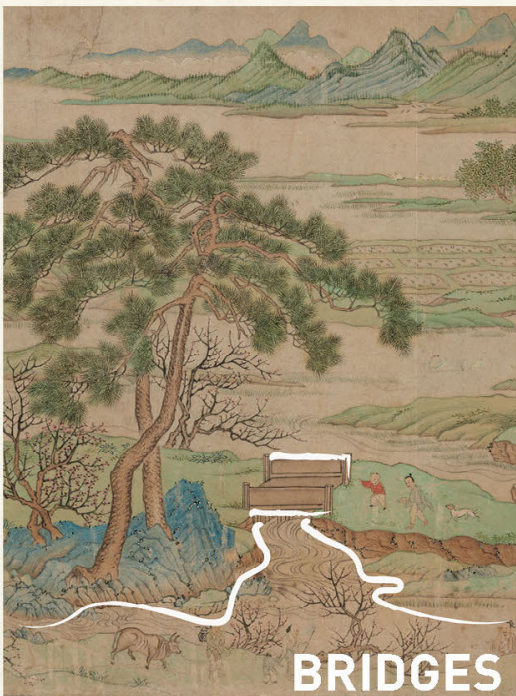
During the Guangxu period of the Qing Dynasty, the "peach flowers of Gaoting", along with the plum blossoms of Xixi and the reeds of Hezhu, became one of the three famous scenic spots in Hangzhou. People in the city traveled by boat from Shangtang River to Gaoting Mountain for an outing to view the peach blossoms.

Refined scholars in Hangzhou, taking the opportunity of admiring peach flowers, gathered at Gaoting Mountain to dispel bad luck and pray for good fortune, as well as floating the wine glasses on top for their drinking, which greatly enriched folk activities at the mountain.

Nowadays, peach blossoms, which are given a specific connotation, may predict spring, symbolize beauty, advocate seclusion, indicate love, or buddhist mood serving as a medium for cultural dissemination, such as holding cultural festivals.



**2 Scenery Pattern of Peach Blossoms:** Inspired by *An Idyllic Land of Peach-Blossom Spring*, various landscape elements are threaded together, forming a stunning scenery for people to recite poetry.





# PLAN

INNOVATIVE RESEARCH LAND

NEIGHBORHOOD CENTER

COMMERCIAL AND FINANCIAL LAND

COMMERCIAL AND FINANCIAL LAND

COMMERCIAL AND FINANCIAL LAND

Zhaojiabang Road

Zhaojiabang Road



0 25 50 100m

COMMERCIAL-RESIDENTIAL LAND

COMMERCIAL AND FINANCIAL LAND

Linding Road

Huandeng Road

Da Nong Gang Road

Danonggang River

Dingcheng Road

Dingcheng Road

COMMERCIAL-RESIDENTIAL LAND

RESIDENTIAL LAND

RESIDENTIAL LAND

- 1 The direction to subway entrance
- 2 Greening for corners
- 3 Sunken Plaza (Peach Blossom Lake Metro Station)
- 4 Peach Blossom Fan Stage
- 5 Double Lotus Pond
- 6 Misty Orchid Bridge
- 7 Peach Blossom Lake
- 8 Peach Blossom Island
- 9 Peach Blossom Garden
- 10 Language of Peach Blossom
- 11 Denggao Pavilion

- 12 Pavilions and Corridors
- 13 Lonesome Boat in the Wilderness
- 14 Thousand-foot Pond
- 15 Two Peaches' Spring Outgoing
- 16 Entrance and Exit of Underground Garage
- 17 Supporting buildings
- 18 Accessory occupancy
- 19 Yinghu Residence
- 20 Arch Bridge
- 21 Outdoor Parking Lot
- 22 Waterside Pavilion

- 23 Park Entrance
- 24 Peach Blossom Brook
- 25 Peach Blossom Slope
- 26 Inner Courtyard
- 27 Cultural Building
- 28 Restroom
- 29 Gaozong Enjoying Peach Flowers
- 30 Close planting
- 31 Overpass
- Boundary line of land
- Underground garage line scope

TOTAL LAND AREA OF **200,000M<sup>2</sup>**

TOTAL BUILDING AREA OF **25,000M<sup>2</sup>**

WATER AREA OF **46,000M<sup>2</sup>**

GREEN LAND AREA OF **130,000M<sup>2</sup>**



# AERIAL VIEW



Shuanglu Peach Blossom Island

Two Peaches' Spring Outgoing

Language of Peach Blossom

Thousand-foot pond

Peach Bank Chasing the Moon

Misty Orchid Bridge

Peach Blossom Fan Stage

Double Lotus Pond

Peach Blossom compound

Gaozong Enjoying Peach Flowers



# CORE STRATEGIES

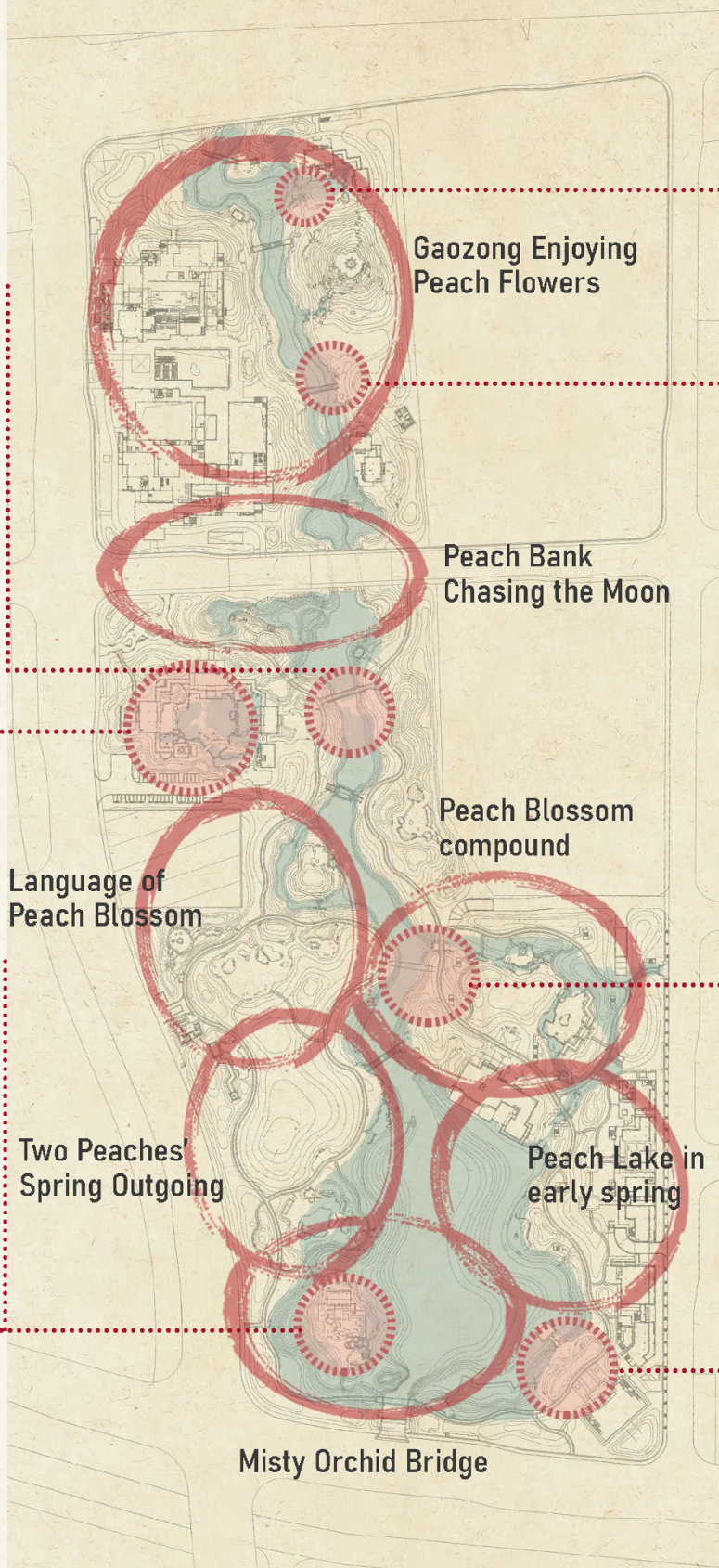
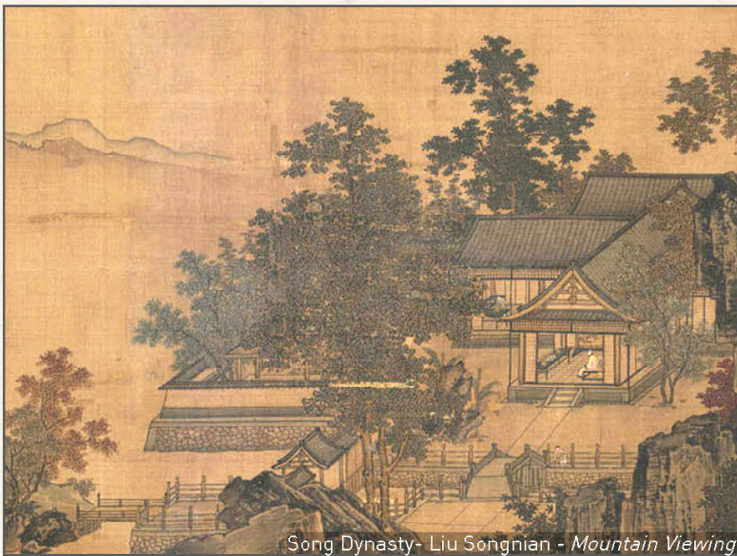
## STRATEGY I: OVERALL LAYOUT BASED ON CHINESE TRADITIONAL LANDSCAPE PAINTING

### STEP1 CONCEPTION: THE DESIGN DRAWS INSPIRATION FROM AN IDYLIC LAND OF PEACH-BLOSSOM SPRING AND POETIC LANDSCAPE DEPICTED IN THE POEMS AND PAINTINGS IN THE SONG DYNASTY.



An Idyllic Land of Peach-Blossom Spring is one of the masterpieces of Tao Yuanming, a litterateur of the Eastern Jin Dynasty. The essay follows the clue of the Wuling fisherman's whereabouts to depict the life of peace, joy, freedom and equality in the Peach Garden. Scenes absorbed by the design include:

- 中無雜樹、芳草鮮美、落英繽紛  
The peach grove is free from the mingling of brushwood, with the beautifully grassy ground covered with its rose petals.
- 林盡水源、山有小口、仿若有光  
At the end of the grove, a spring from a cave in the hill comes into sight. There seems to be a weak light in the cave.
- 豁然開朗、土地平曠、屋舍儼然  
After a dozen steps, it opens into a flood of light. There emerges a wide, level valley, with houses arranged in neat rows.
- 良田美池、阡陌交通、鵝犬相聞  
Fertile fields and beautiful ponds constitute a charming scene, with dogs and chickens running about.
- 不知有漢、無論魏晉、世外桃源  
In such a fictitious land of peace, it is easy to forget the existence of the outside world.





# CORE STRATEGIES

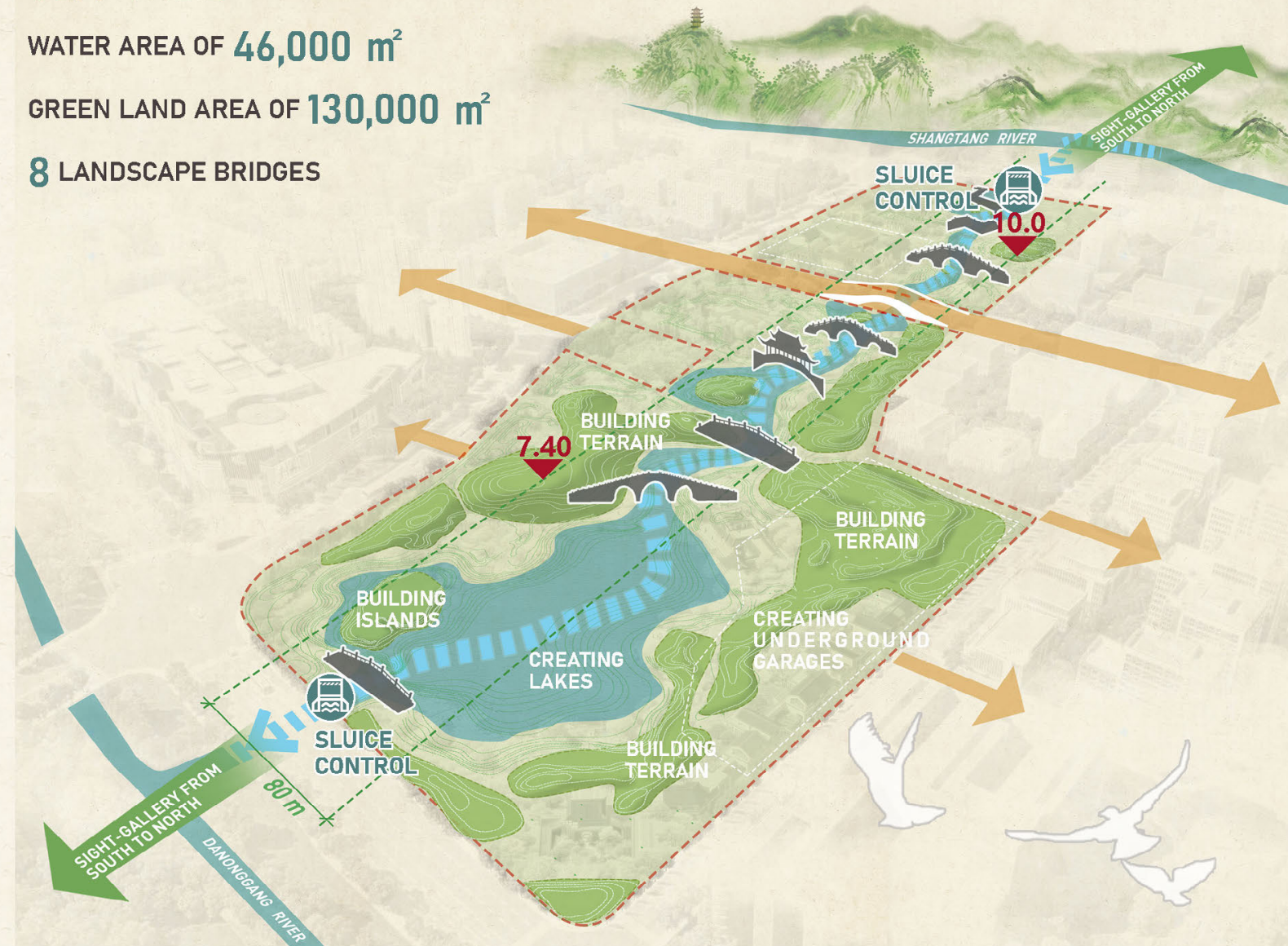
**STEP2 LANDSCAPE LAYOUT:**  
THE PARK INCORPORATES THE LANDSCAPE OF GAOTING MOUNTAIN AND CREATES NUMEROUS WATER FEATURES BY DIVERSION.

**80M-WIDE** SIGHT-GALLERY FROM SOUTH TO NORTH

WATER AREA OF **46,000 m<sup>2</sup>**

GREEN LAND AREA OF **130,000 m<sup>2</sup>**

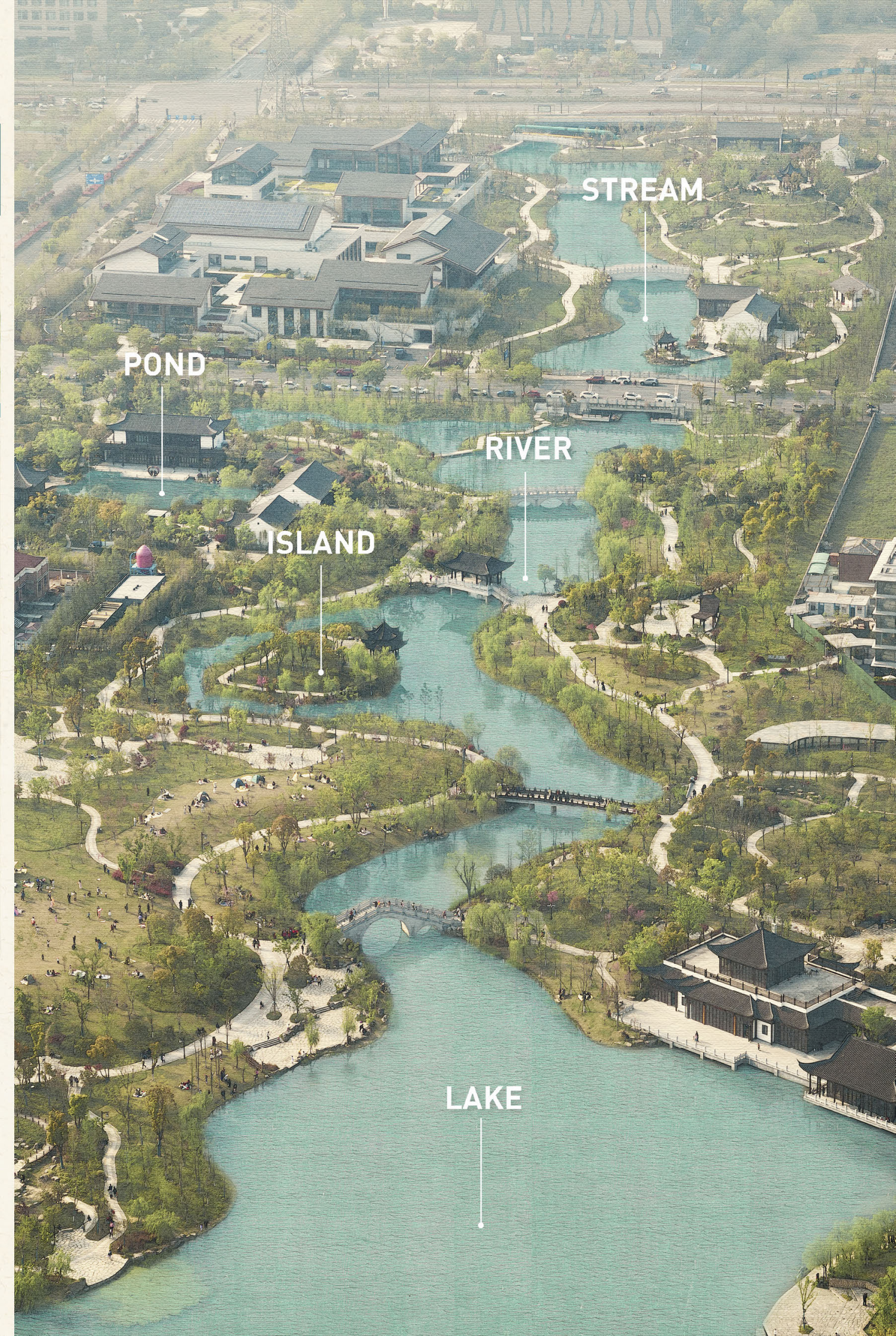
**8** LANDSCAPE BRIDGES



**LAYOUT:** The park incorporates the landscape of Gaoting Mountain with its waters. On the north side of the park, the highest point of the park is constructed by taking advantage of topographic adjacency to the towering Gaoting Mountain, thereby integrating the views of the park into the urban landscape;

**WATER FEATURE:** Water is diverted into the park and connected as a whole. While guaranteeing the needs for flood discharge, from narrow to wide, rich water systems consisting of “stream, river, lake, island, and pond” is constructed, which creates a deep and rich shoreline space such as lake, green hinterland, cultural buildings, and city;

**STRUCTURE:** Proceeding from the traditional reserved and composed cultural artistic conception, the overall style of the park is designed by combining the simple Song style with the local characteristics of dwellings Zhejiang-style houses, and organizes and connects the elements of mountain, waters, trees, stones, and roads, etc.

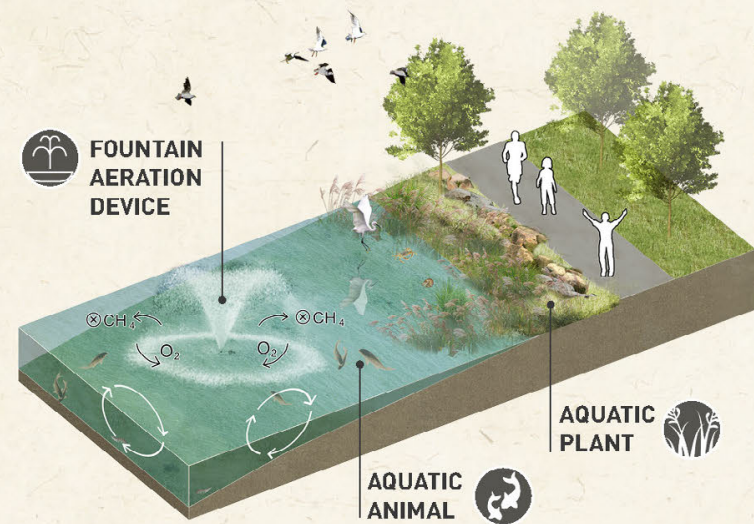




# CORE STRATEGIES

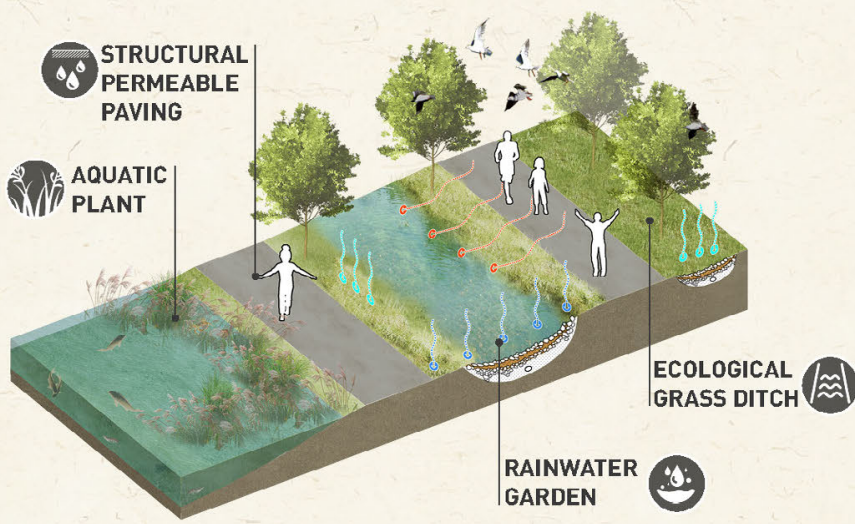
## STRATEGY II: THREE-IN-ONE WATER PURIFICATION SYSTEM AND SPONGE CITY TECHNOLOGY SYSTEM

### A. THREE-IN-ONE WATER PURIFICATION SYSTEM

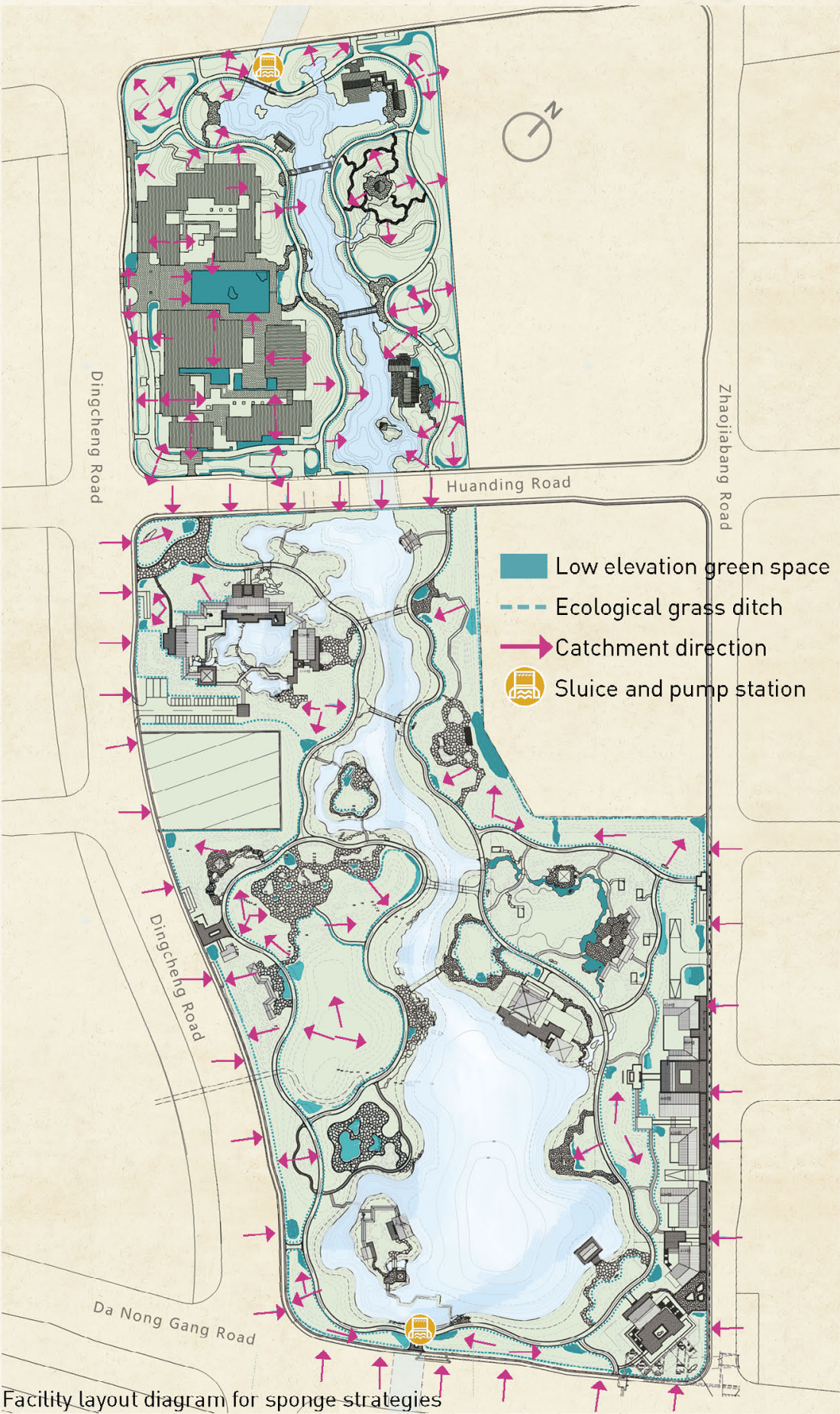
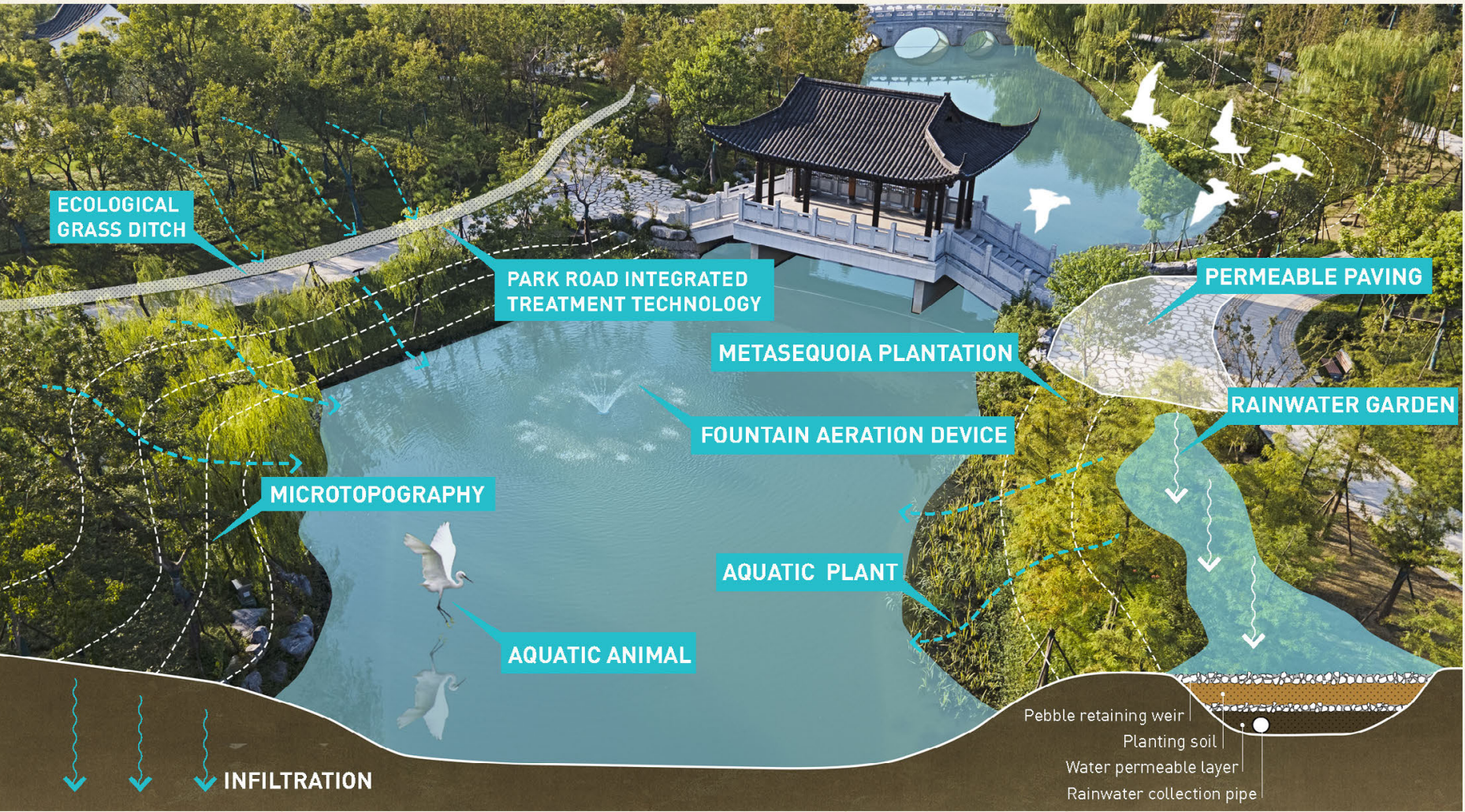


The water is purified through "aquatic animal and plant ecological purification + park road integrated treatment technology". At the same time, water transparency observers, courtyard-type air-floatation water treatment device, and fountain aeration device, etc. have been added to provide a set of stable, efficient, and long-term water self-purification system for the Peach Blossom Lake, and all main indicators of water quality in the park have reached the Level-III standard of surface water.

### B. SPONGE CITY TECHNOLOGY SYSTEM



In the construction of the park, the sponge city concept of "seepage, stagnation, storage, purification, utilization, and discharge" was adopted. The main measures included sinking of green spaces, structural permeable paving, use of permeable bricks and asphalt, drainage ditches with gravels, and landscape water system, etc. Therefore, the park was rated as a "typical case of sponge city construction in Zhejiang 2021" and listed as a "example of Hangzhou's comprehensive promotion of sponge city construction" by the Ministry of Housing and Urban-rural Development.

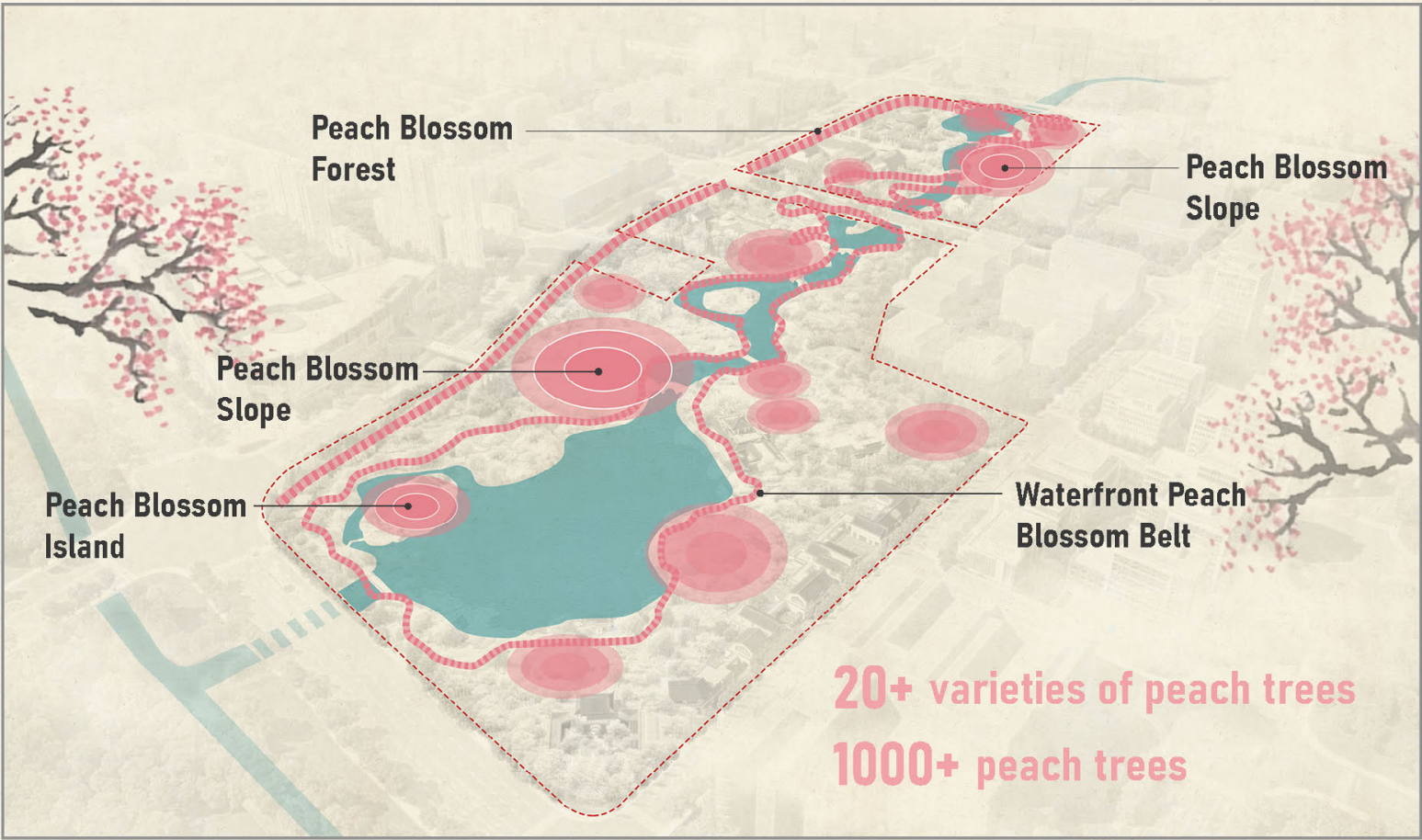




# CORE STRATEGIES

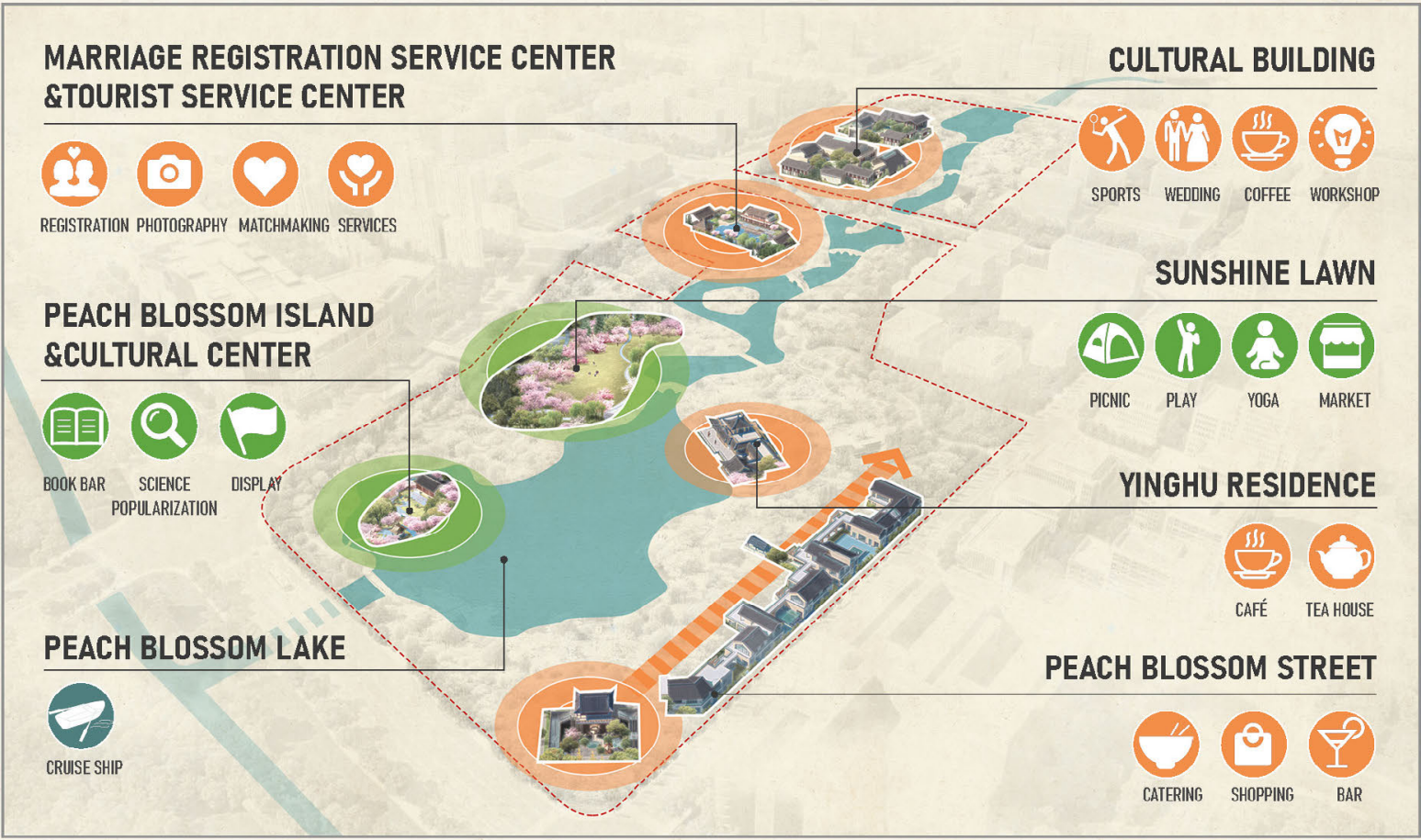
## STRATEGY III: SHAPING OF A PLANT LANDSCAPE SPACE THAT HIGHLIGHTS THE LOCAL CULTURE

In the design, a lot of local materials were used. Through soil improvement, ecological restoration, and the shaping of diverse habitats, the use of local plants represented by peach trees reflects the ecologically and environmentally friendly nature of the project. Thousands of peach trees of about 20 selected suitable varieties were planted to create a “peach garden” that fully demonstrates the color, posture, and rhyme of peach trees in the traditional cultural artistic conception from multiple dimensions and scenes. With “peach trees” as the medium, a series of spaces with public popular science and diverse social functions have been created.



## STRATEGY IV: CREATION OF A VIBRANT GREEN HEART THAT BENEFITS THE CITY AND THE PUBLIC

The Peach Blossom Lake Park integrates various urban service functions such as leisure, tourism, entertainment, cultural science popularization and fitness. Being an ecological and cultural park with composite urban functions, the park benefits residents in large areas nearby. They can enjoy the tranquility amidst the hustle and bustle of the city, and live a life “close to mountains, lakes, flowers and birds.”







“TWO PEACHES’ SPRING OUTGOING”





"PEACH LAKE IN EARLY SPRING"





"GAOZONG ENJOYING PEACH FLOWERS"



COURTYARD



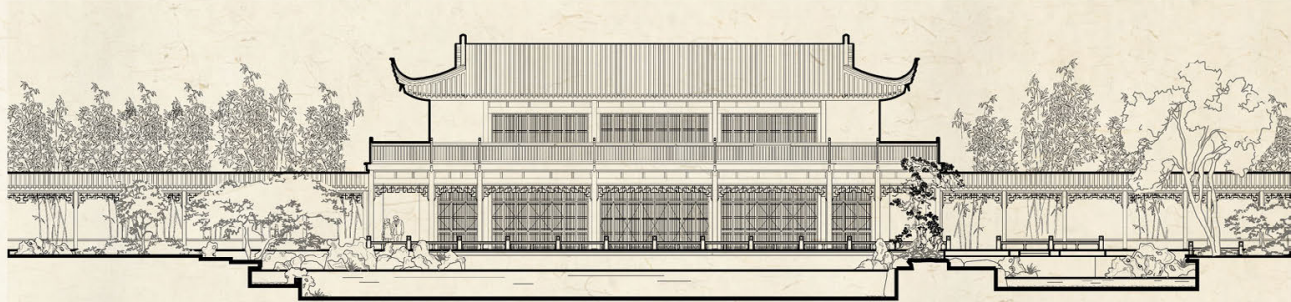


# COURTYARD



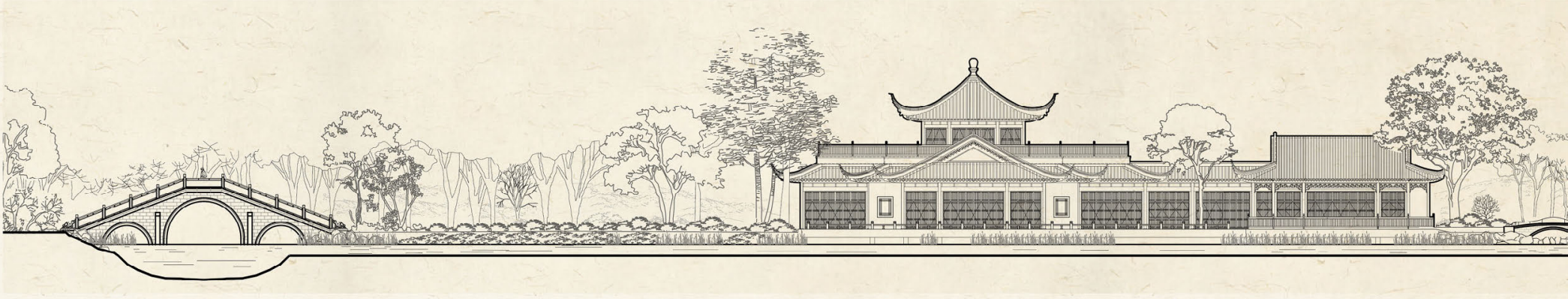


PAVILION



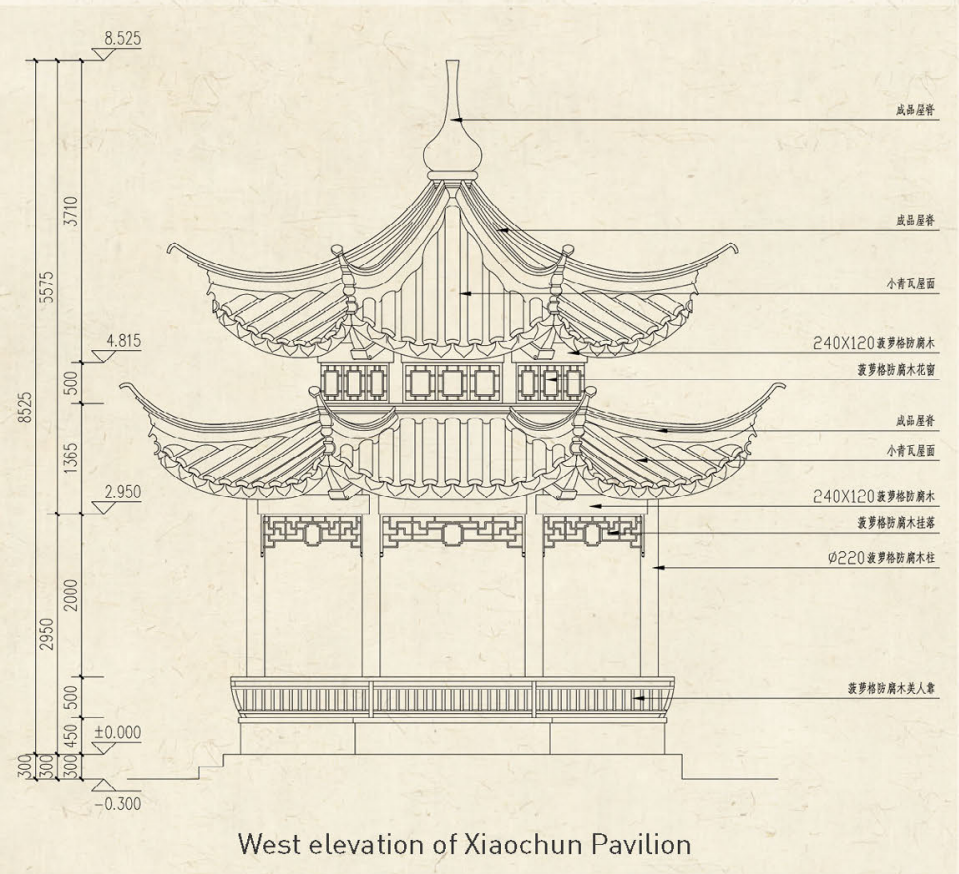


PAVILION





PAVILION



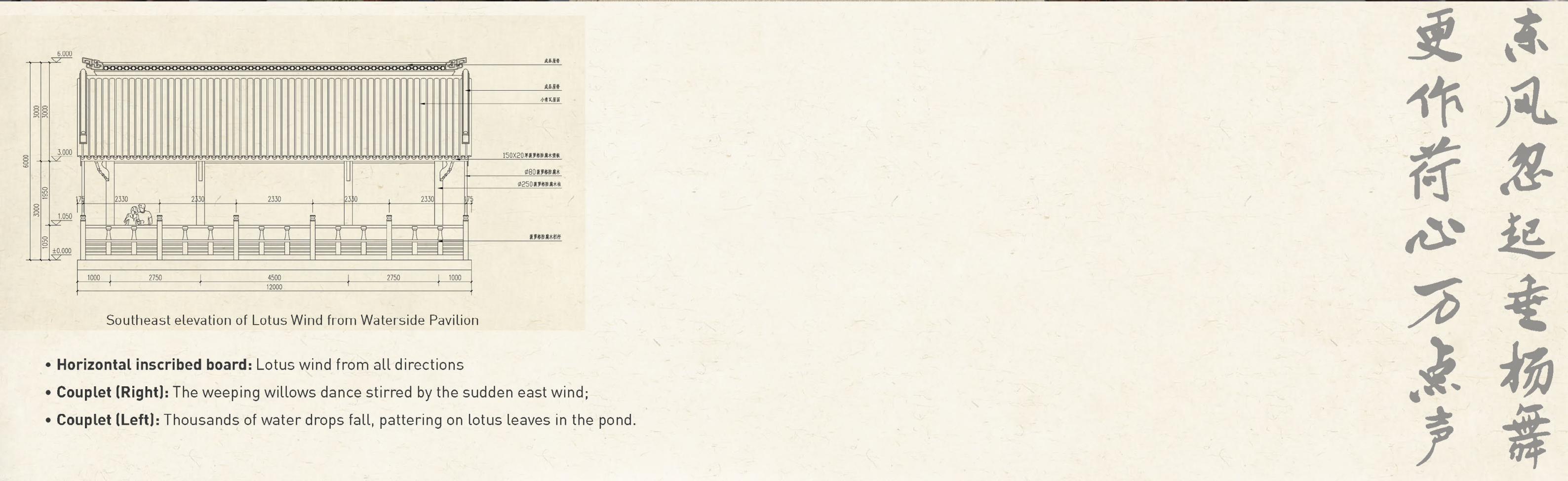
春江水暖鸭先知  
竹外桃花三两枝



- **Horizontal inscribed board:** Xiaochun Pavilion
- **Couplet (Right):** Beyond bamboos a few twigs of peach blossoms blow;
- **Couplet (Left):** When spring has warmed the stream, ducks are the first to know.



A wide-angle photograph of a traditional Chinese pavilion with a dark tiled roof and wooden structure, situated on a concrete platform over a body of water. The pavilion has a sign that reads "荷風四面" (Wind from all sides of the lotus). People are visible inside the pavilion and walking on the platform. The background shows modern buildings and a clear blue sky.



Southeast elevation of Lotus Wind from Waterside Pavilion

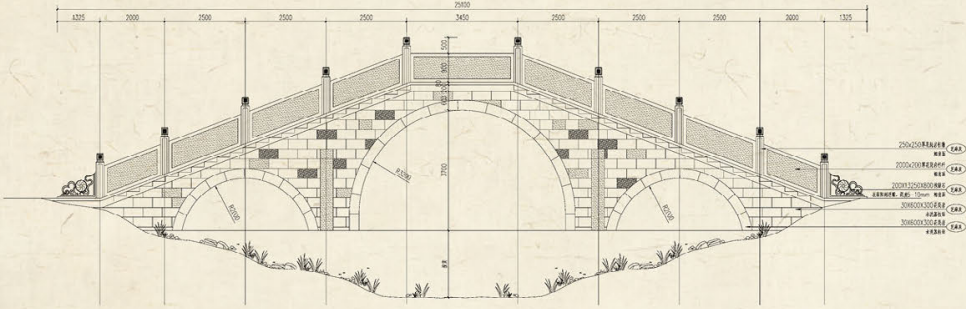
- **Horizontal inscribed board:** Lotus wind from all directions
- **Couplet (Right):** The weeping willows dance stirred by the sudden east wind;
- **Couplet (Left):** Thousands of water drops fall, pattering on lotus leaves in the pond.

- 
- Southeast elevation of Lotus Wind from Waterside Pavilion
- **Horizontal inscribed board:** Lotus wind from all directions
  - **Couplet (Right):** The weeping willows dance stirred by the sudden east wind;
  - **Couplet (Left):** Thousands of water drops fall, pattering on lotus leaves in the pond.



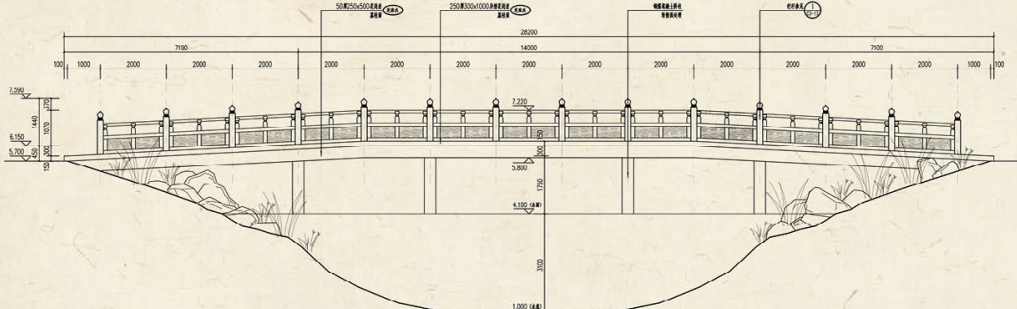
BRIDGES

落虹桥



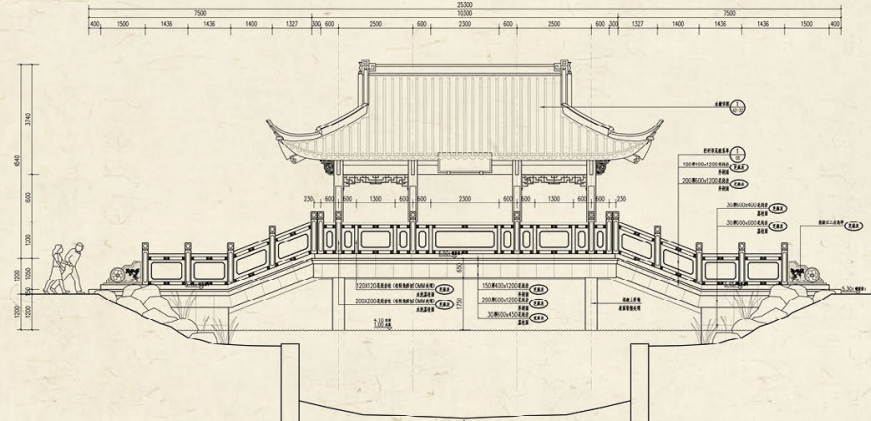
LUOHONG BRIDGE

玉露桥



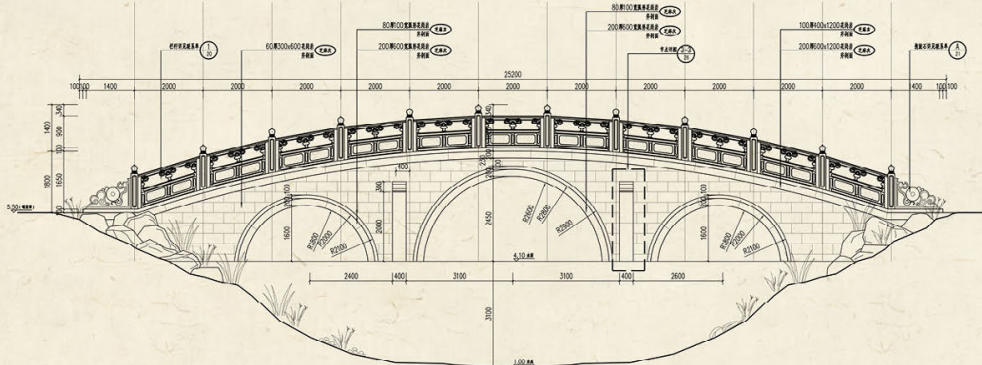
YULU BRIDGE

凌波桥



LINGBO BRIDGE

追月桥



ZHUIYUE BRIDGE





BRIDGES

追月桥



凌波桥





BRIDGES

落虹桥





DESIGN DETAILS





SCENERY AT FOUR SEASONS







ATTRACTING SAM'S CLUB, PARADISE WALK SHOPPING CENTER TO SETTLE IN  
**2 COMMERCIAL COMPLEXES**



DAILY VISITORS OF  
**50,000 PEOPLE**



THE PARK WON MANY HONORS SUCH AS  
THE "CARBON NEUTRAL  
FOREST OF THE 19TH ASIAN  
GAMES", THE "BEAUTIFUL  
PARK" IN HANGZHOU,  
THE "MOST BEAUTIFUL  
MARRIAGE REGISTRY IN  
HANGZHOU"



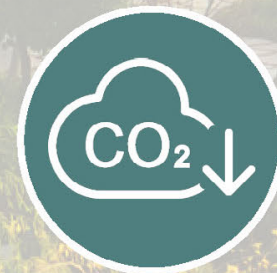
GREEN LAND AREA OF  
**130,000 M<sup>2</sup>**



WATER AREA OF  
**46,000 M<sup>2</sup>**



INCREASE NUMBER OF  
TREES ABOUT  
**8415**



CARBON SEQUESTRATION  
CAPACITY OF ABOUT  
**2,272 TONS/YEAR**