

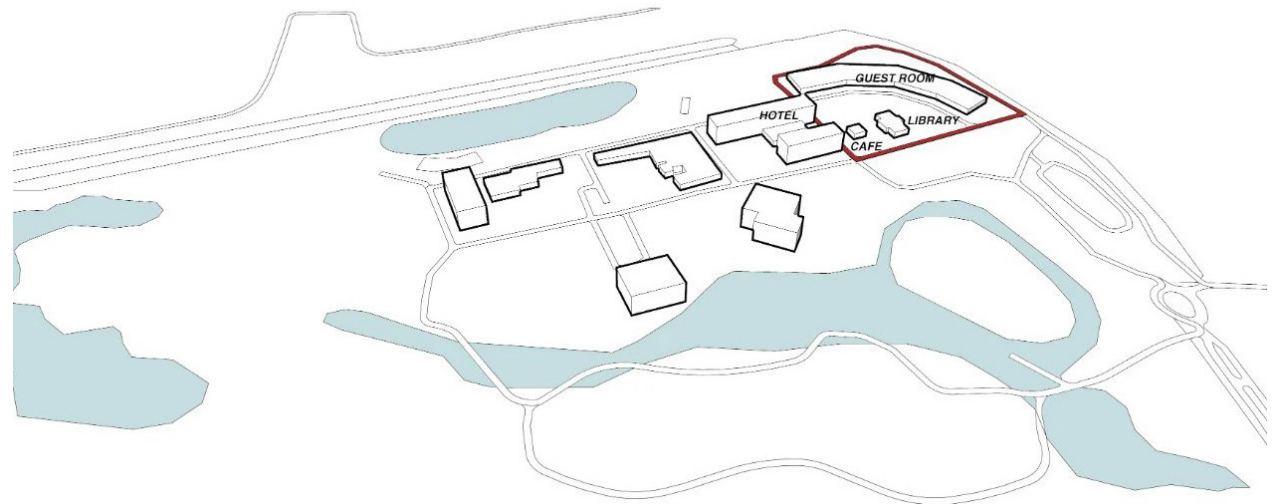


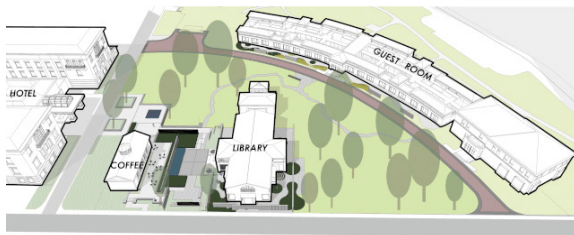
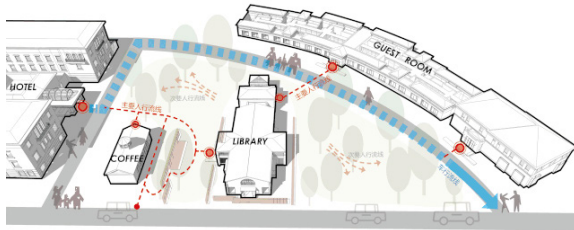
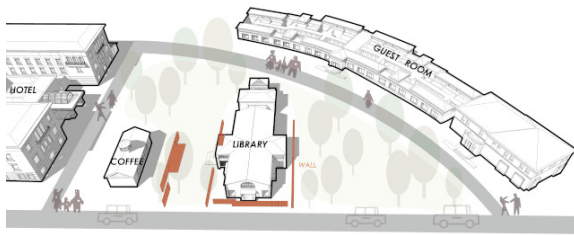
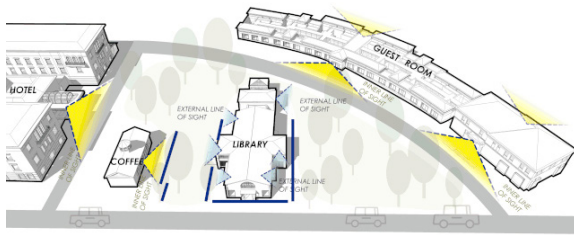
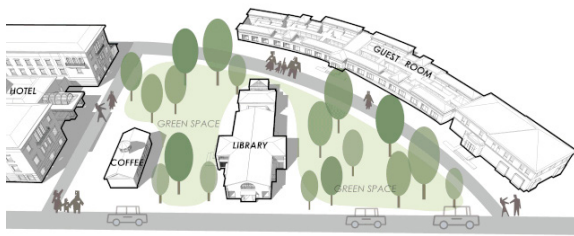
ORIENTAL LIBRARY

PROJECT OVERVIEW

The development is located at the intersection between Hotel Kapok and the Conference Center in Xiong'an New Area. Belonging to China Resources University, the fan-shaped site consists of a Chinese-style school building and a Pacific Coffee house. The landscape design is based on the new positioning of the building complex and its new way of operating, and also takes into consideration of the forty corkscrew willows on the site.

The involvement of landscape first considers the influence of the buildings on people: their functions determine the moments of quiet introspection of people within. Meanwhile, rather than present purposive landscape, we prefer to create landscape that is not only visible but also sensible. Therefore, we avoid the powerful intervention, making the newly-added landscape the thread running through the whole space.





After landscape intervention, the author firstly thinks about the human status caused by several buildings. The function of the building determines that the people in it are quiet and introspective. At the same time, different from the landscape that is dominated by traffic, or by function, or for the purpose of arousing strong emotions, in this site, the character of the landscape itself does not play the leading role, but becomes the leading line of the whole spatial character of coitus.



What's more, when surveying the site, we were excited to find the luxuriant tall trees which provide an ideal space for a favorable environment. Based on the site conditions, we gradually made our landscape plan and didn't cut down any tree until at length the project was completed.



SPATIAL EXTENSION

The main traffic lines are organized around the small school, based on which the internal spaces extend outwards in all directions. Built around the main buildings are several groups of low landscape walls, which present impressive garden views. On the one hand, the low walls block out the line of sight and increase the spatial levels. And the openings in the walls allow people inside the buildings to interact with people walking around. On the other hand, the openings are not designed in the upper but at the bottom of the walls, which make the tall trees visible and reserved.











CONTEXT-BASED DESIGN

The tall trees standing on the site become the main part of the outdoor landscape, based on which a new landscape system is built: landscape walls of moderate sizes are created without any interference in the space; traffic lines and the spaces are organized flexibly and separated naturally by different pavement materials or “plant walls”, providing distinctive space experiences.

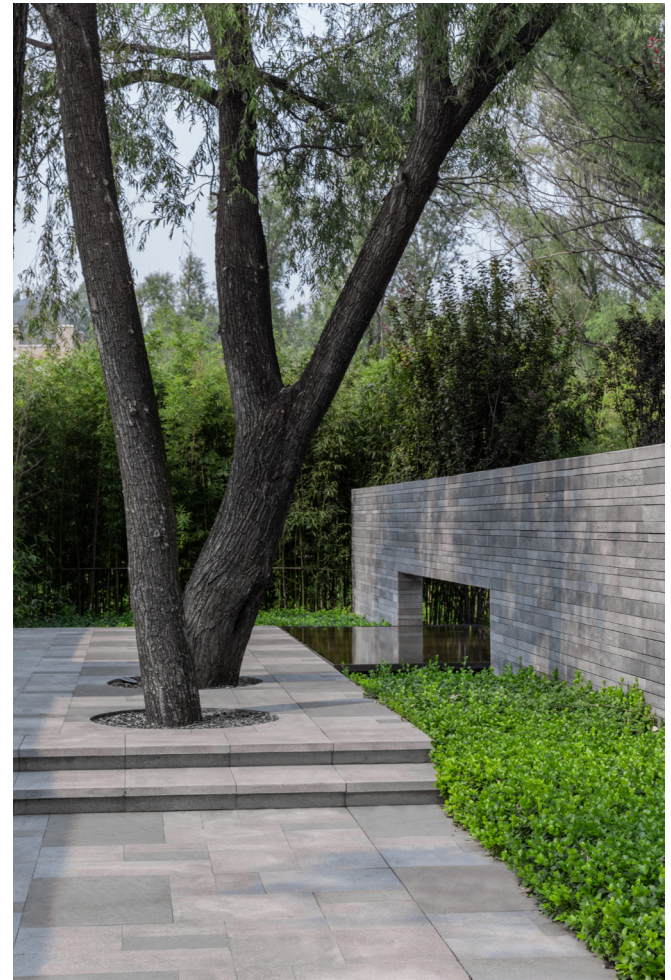












REDUCE LANDSCAPE SYMBOLS

In order to create a simple and relatively introverted environment and transform the “spatial impact” of landscape into an indirect penetration, we’ve tried to avoid the use of metal decorations and reduce the self-expressive landscape architectures as far as possible, which contributes to a unified facade texture. After repeated deletions and adjustments, the characteristic leafy area formed by the tall trees has eventually become the focus of the whole space.







During the design, the designers need to constantly remove self-expression from the space. At the same time, the site rewards the designers with great perception in space, which is a guidance on the design of scales and the selection of materials and plants. What we always believe is that a good landscape space is not created by designers alone but based on the characteristic of the space, the warmth of time and the state of people shuttling within.

