

PROJECT TITLE

# FROM OLD CANAL TO NEW LIFE - A PATHWAY TO PROSPERITY

BODU RIVER RENOVATION - XINGCHANG SOUTH ROAD TO XIXING ROAD

XINWU DISTRICT, WUXI, CHINA



## PROJECT STATEMENT

The renovation of the Bodu River is a pioneering case of urban renewal in Wuxi, with significant practical reference value. The design has gradually improved the ancient Bodu River into an important ecological, living and cultural corridor in the local region.

In the progress of updating and renovation, the entire road has been connected to form a continuous riverside greenway; the dead space under the bridge has been activated, all age friendly leisure and sports facilities have been added and it's been transformed into a colorful and vibrant space. The design has returned the riverside landscape to the citizens and infuse the open scenery into the surrounding communities. At the same time, the parking lot space of surrounding schools was shared, effectively utilizing the existing conditions to solve the difficulties of parking for residents.

This project is of great significance to the community residents living in the surrounding area. It is a successful case of co-construction with residents, surrounding schools, etc. The builders and designers fully listened to the requirements of the surrounding citizens and worked together with the people to transform the riverside landscape at their doorstep, winning unanimous praise from the surrounding residents.



BIRD'S EYE VIEW OF BODU RIVER (XINGCHANG SOUTH ROAD TO XIXING ROAD)



PROJECT NARRATIVE

Background

As the mother river of Wuxi Xinwu District, with a total length of 21 kilometers, the Bodu River basin runs through the entire Xinwu District and is an extremely important urban waterfront space. The scope of this phase for the project is 265,922sqm and starts from xingchang south road to xixing road. In general, the public facilities in this section are relatively lacking, and the water surface is narrow, resulting in a single urban spatial function.

The main areas on both sides of the river are high-density residential areas, with extremely high population density. There were few partition walls directly installed on the riverbank, and the green spaces along the river had been blocked for a long time, which not only led to the inability of the Bodu River Greenway to connect, but also, due to excessive closure, the riverbank had been in disrepair for a long time, the green spaces had lost their function, and illegal construction along the river occurred as well, which also caused hidden dangers to flood safety concerns.

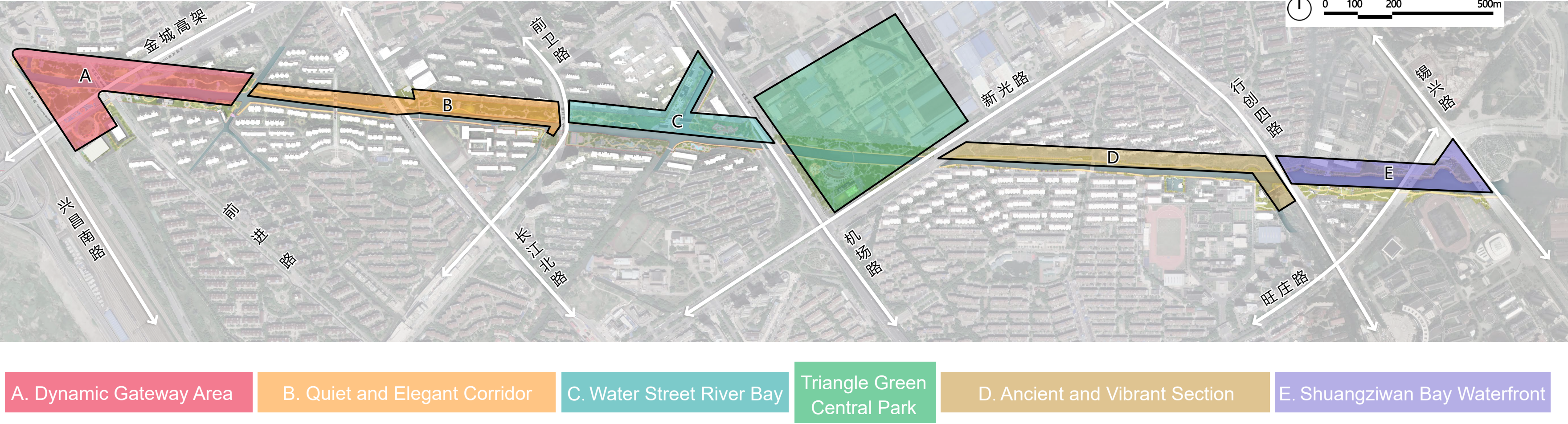
As the green line couldn't be connected, scattered green spaces only served a small number of people. More than 10 resettlement housing communities distributed on both sides are all over 20 years old, with a lack of green space, inadequate facilities for people's livelihood and a lack of basic needs of daily life and entertainment, constant conflicts caused quite often. There was an urgent need for systematic green space and service facilities for all age groups of people's livelihood.

OVERALL LANDSCAPE SITE PLAN



- |                                       |                            |                                |                        |                           |                       |                           |
|---------------------------------------|----------------------------|--------------------------------|------------------------|---------------------------|-----------------------|---------------------------|
| 01. Bodu Gateway Park                 | 03. Citizen Fitness Garden | 05. Community Botanical Garden | 07. Creek Water Street | 09. Children's Wonderland | 11. Fitness Trail     | 13. Ecological Waterfront |
| 02. Jincheng Cultural And Sports Park | 04. Ancient Tree Corridor  | 06. A Lush Forest And Green    | 08. Walk Trail         | 10. Central Green Space   | 12. Water Gate Square | 14. Shuangziwan Bay       |

FIVE FUNCTIONAL SECTIONS AND ONE FOCAL HEART



- |                         |                               |                           |                             |                                |                               |
|-------------------------|-------------------------------|---------------------------|-----------------------------|--------------------------------|-------------------------------|
| A. Dynamic Gateway Area | B. Quiet and Elegant Corridor | C. Water Street River Bay | Triangle Green Central Park | D. Ancient and Vibrant Section | E. Shuangziwan Bay Waterfront |
|-------------------------|-------------------------------|---------------------------|-----------------------------|--------------------------------|-------------------------------|

By identifying the unique features of the site, the design team and construction department have divided this linearly cramped waterfront space into five functional sections and one focal heart, which preserved the existing community triangular green space in the central part. The western part formed a Dynamic Gateway Area, a Quiet and Elegant Corridor and a Water Street River Bay, and the eastern part formed an Ancient and Vibrant Section and a Shuangziwan Bay Waterfront.





BRINGING CONVENIENCE TO LOCAL RESIDENTS  
BRIDGES TO CONNECT THE BREAKPOINTS, COMMUNITIES AND SCHOOLS



**PROJECT NARRATIVE**

**Propose Two Major Strategies:**

- 1. Greenway to form a chain  
Green spaces to connect into patches
- 2. Adjusting comprehensive overall functions  
Activating negative space

**Greenway Design:**

Through preliminary investigation, it was found that the public has a very consistent and deep expectation for the waterfront trail to achieve full connectivity as soon as possible. Behind the various breakpoints there lies a series of tricky problems.

Firstly, the existing green space in this section is fragmented. The designers and construction department have comprehensively sorted out the current situation of the walkway, and connected the greenway through different measures. The design was not limited to the same width scale, it set the width of the greenway according to the current situation, ranging from 2-3 meters.

Simultaneously the existing pedestrian bridge has been repaired and new pedestrian bridges have been added to connect the breakpoints. The greenway paving has been unified, using warm gray concrete materials. The team has also preserved and unified the railing of the revetment, painting the original messy and various railings in gray.







BRINGING CONVENIENCE TO LOCAL RESIDENTS  
BRIDGES TO CONNECT THE BREAKPOINTS, COMMUNITIES AND SCHOOLS



PROJECT NARRATIVE

Wall Renovation and Micro Updates:

Secondly, the surrounding areas of this section are mostly residential areas, with some residential areas extending directly to the riverbank, causing a disruption to the greenway. Some residential areas have walls standing by the river, leaving only narrow walkways, creating a cramped linear space and a poor walking experience.

Therefore, in the design progress, the walls were upgraded and renovated, the original diverse wall styles have been unified and it has created mosaic collages to match the exterior facade of the original residential area. In some areas, the walls and corridors were combined to form a shelter for shade and seating.



THE WALLS WERE UPGRADED AND RENOVATED, THE ORIGINAL DIVERSE WALL &RAILING STYLES HAVE BEEN UNIFIED





DESIGN CREATED MOSAIC COLLAGES TO MATCH THE EXTERIOR FACADE OF THE ORIGINAL RESIDENTIAL AREA  
IN SOME AREAS, THE WALLS AND CORRIDORS WERE COMBINED TO FORM SHELTERS FOR SHADE AND SEATING



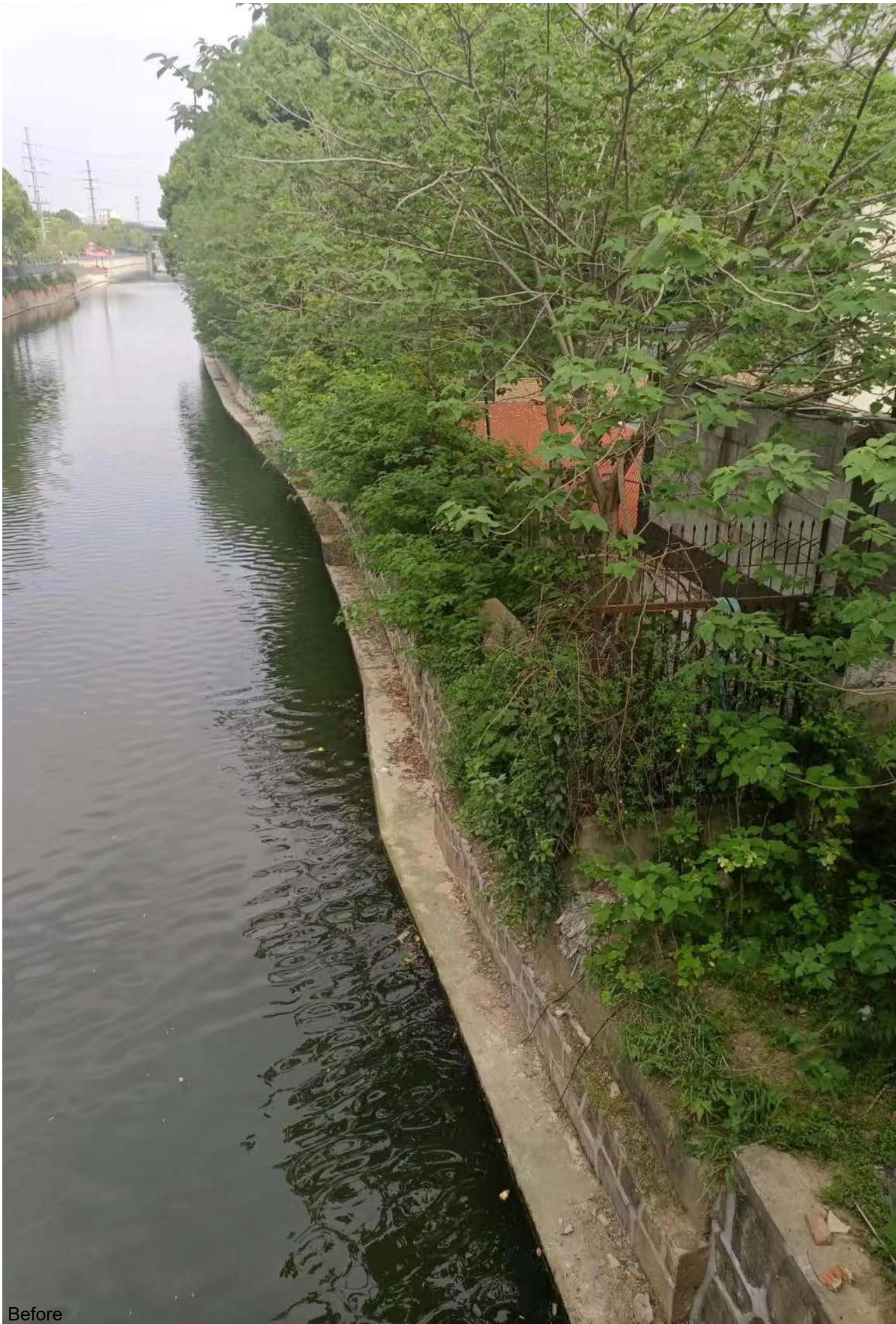
PROJECT NARRATIVE

Community Land Giving Way to Greenway Space:

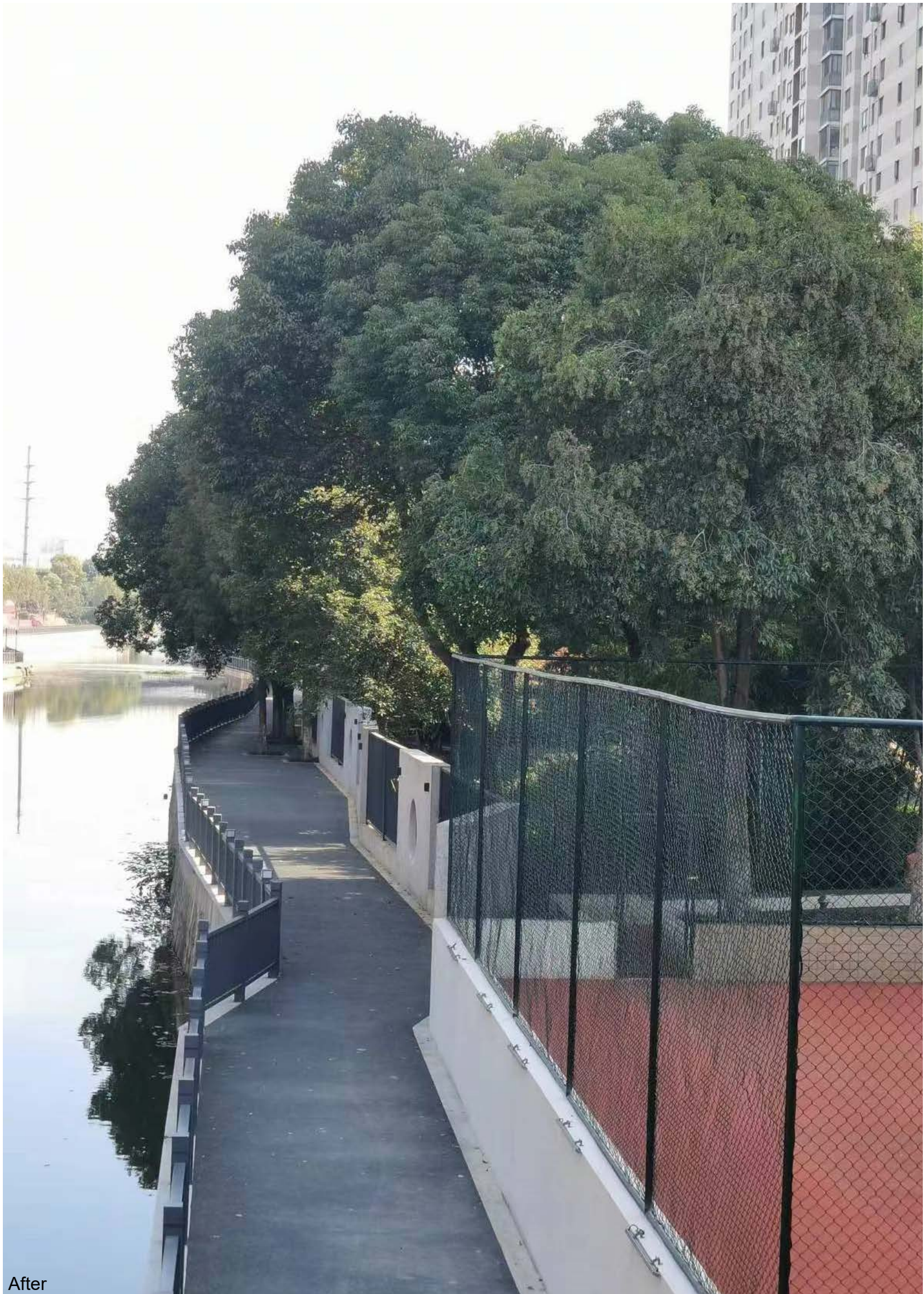
For the residential area that reached the riverbank, Van-ke Dongjun Community is a typical case.

After several rounds of communication with the community owners, the designer and construction department have moved the community boundary back by 3 meters, built a new partition wall, and made way for some public areas.

Among them, there were also some area inside the community that couldn't be retreated due to the existing tennis court. Design team utilized some space by using the original revetment overhanging for 2 meters, together with some remaining space outside, to form a 3-meter greenway space. It finally opened all the blockages.



Before



After

EXISTING TENNIS COURT RETREATED TO GIVE WAY TO GREENWAY SPACE





UNDER BRIDGE SPACE ACTIVATED TO BECOME A VIVID, SOCIABLE AND ENERGETIC WONDERLAND

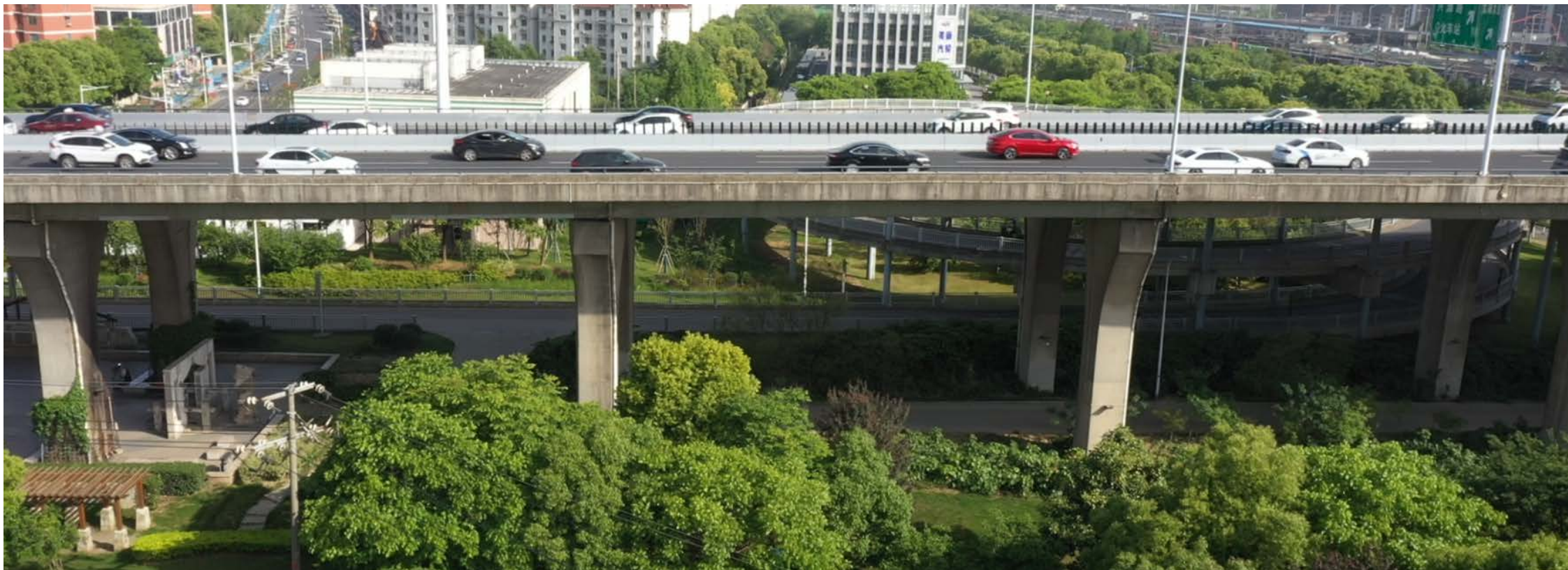


PROJECT NARRATIVE

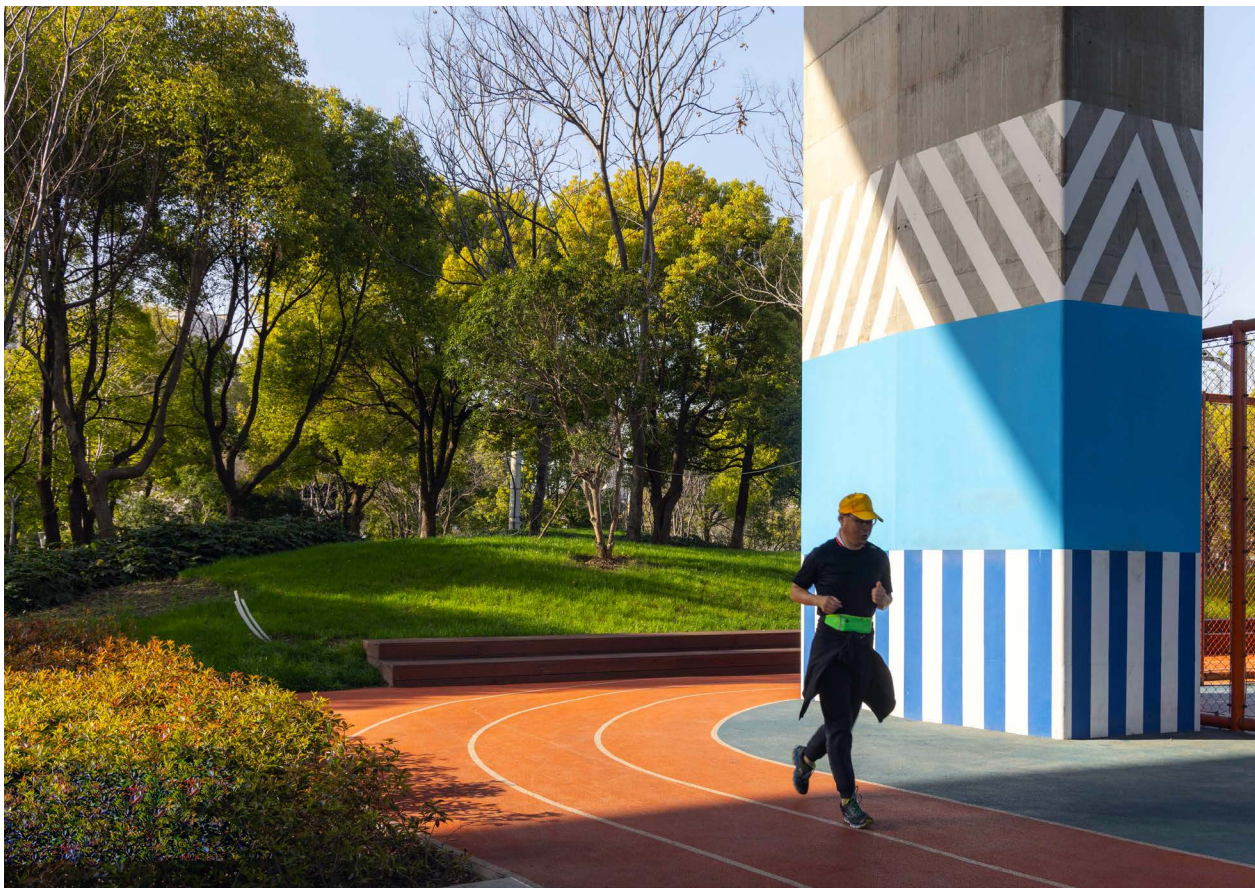
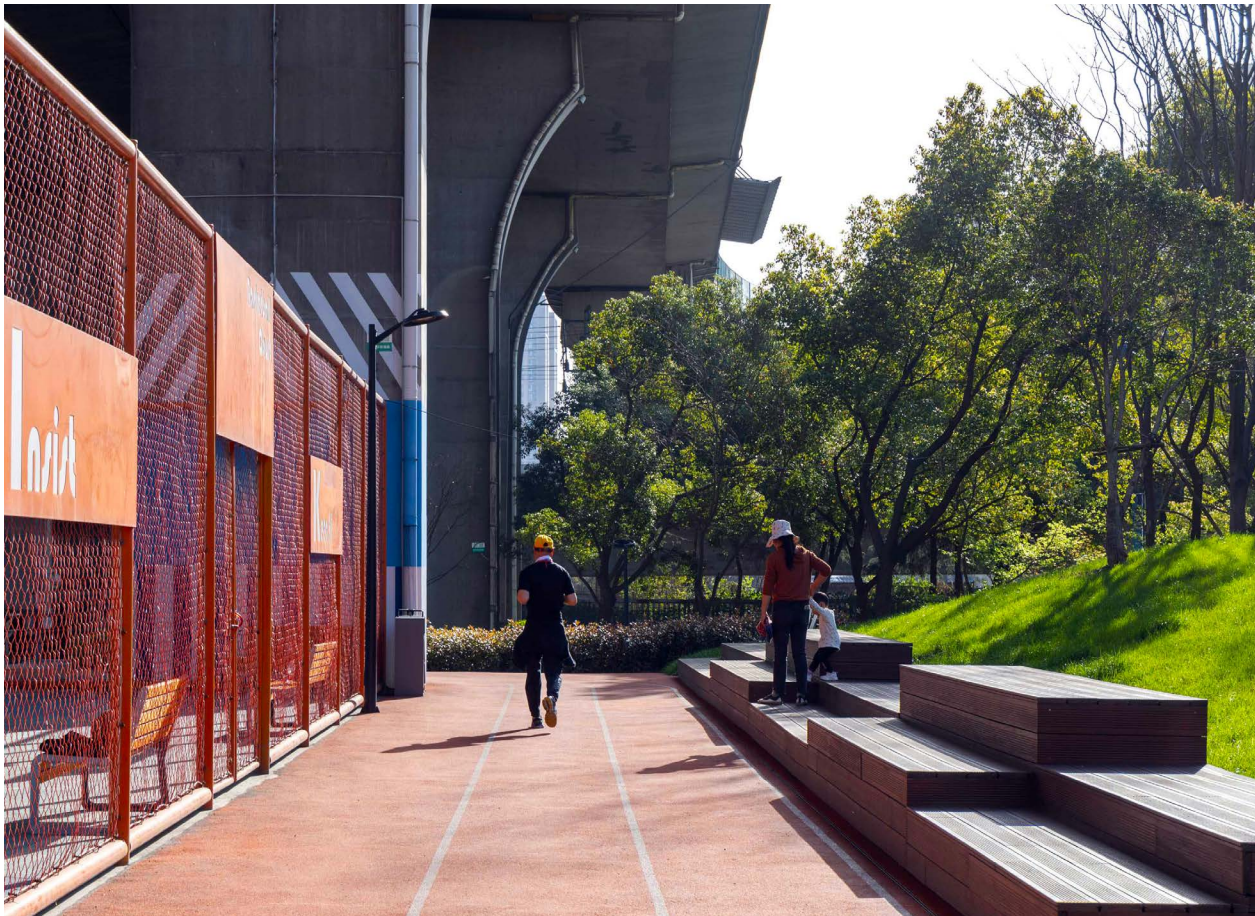
Under Bridge Space Activation

There are many negative spaces in the venue, especially the space under the bridge, mainly under the Jincheng Elevated Road in the Dynamic Gateway Area. Near Xingchang South Road, it used to be a non-motorized lane, and the plants on both sides were not growing well due to the year-round gloom.

The design team and construction department moved the original non-motorized vehicles to one side, released all the negative spaces on both sides of the river and adding functional spaces such as basketball courts, table tennis courts, circular runways, and citizen squares, etc. It connected the two green spaces in the north and south through the space under the bridge, forming an overall dynamic park. The southern green space has also added sports facilities such as tennis courts, which has transformed an abandoned space to a vivid functional space.



EXISTING ABANDONED SPACE BEFORE RENOVATION



UNDER BRIDGE SPACE ACTIVATION - TRANSFORMING ABANDONED SPACE TO A FUNCTIONAL SPORTSCOURT





UNDER BRIDGE SPACE ACTIVATED TO BECOME A VIVID, SOCIABLE AND ENERGETIC WONDERLAND





EXISTING LARGE TREES RETAINED WITH ADDED SUNNY LAWN TO CHANGE THE GRAY SPACE INTO A COLOURFUL SPORTS PARK



PROJECT NARRATIVE

Under Bridge Space Activation

The southern green space design followed the shape and texture of a circular bicycle bridge, which has retained the existing large trees and added a sunny lawn. In the previously dark space under the bridge, a circular runway has been added with interesting sculptures and colors, transformed the space into a circular energy field. Tennis court, service buildings, parking lots, etc. have been added along the road to attract tennis enthusiasts to come and exercise.

As a result, this gray space, which used to only provide a circular bridge for bicycles, has been transformed into a colorful energetic sports park.



SPORTS & SERVICE FACILITIES HAVE BEEN ADDED ALONG THE ROAD TO ATTRACT PEOPLE TO COME AND EXERCISE  
THE GRAY SPACE HAS BEEN CHANGED INTO A COLOURFUL SPORTS PARK





GREEN SPACE DESIGN FOLLOWED THE SHAPE AND TEXTURE OF THE CIRCULAR BICYCLE BRIDGE TO FORM A CIRCULAR ENERGY FIELD



## PROJECT NARRATIVE

### Under Bridge Space Activation

The space under the bridge located under Qianjin Road and Jincheng Elevated Road used to be a place where people spontaneously gathered and carried miscellaneous furniture to play chess. The venue was messy, the urban interface was extremely poor, and disputes often arose, making local management difficult.

The design has considered the current situation and didn't change the nature of it, it respected the original functions for the citizens here and has turned this under bridge space into a chess and card club.

During the construction process, community and public representatives have been invited to provide on-site guidance, customizing seats and chessboards for chess enthusiasts. Via arranging them neatly and logically, the team kept receiving high praise from the local communities.

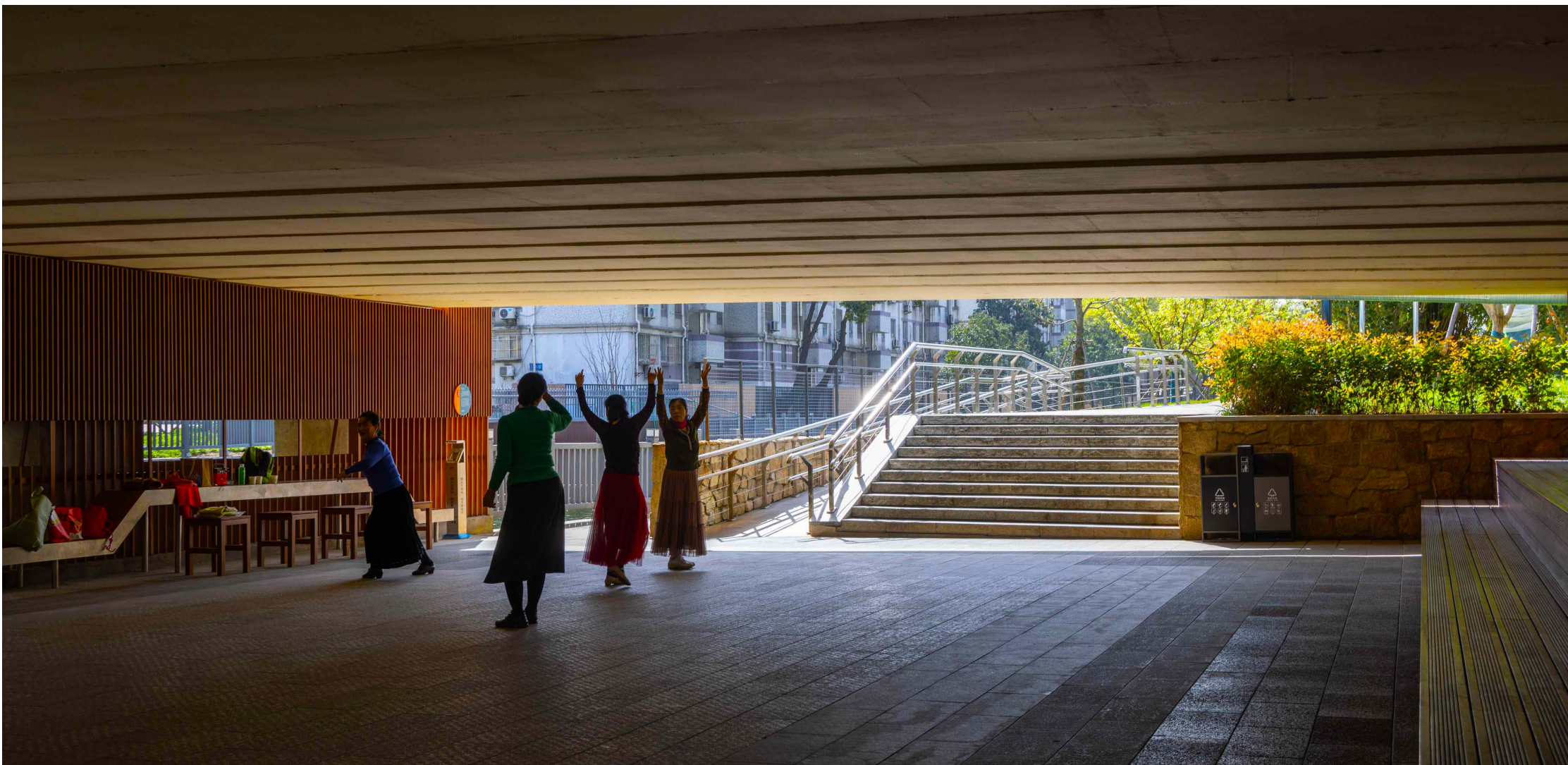
After it's completed, local people cherish their own outdoor space and spontaneously maintain the cleanliness of the space and facilities, which helped solving the problem of urban management from the root.

The entire space under the Jincheng Elevated Bridge has been transformed from a messy gray space to a dynamic and tranquil amusement park. A leisure activity venue that accommodates the elderly, children, and youth.

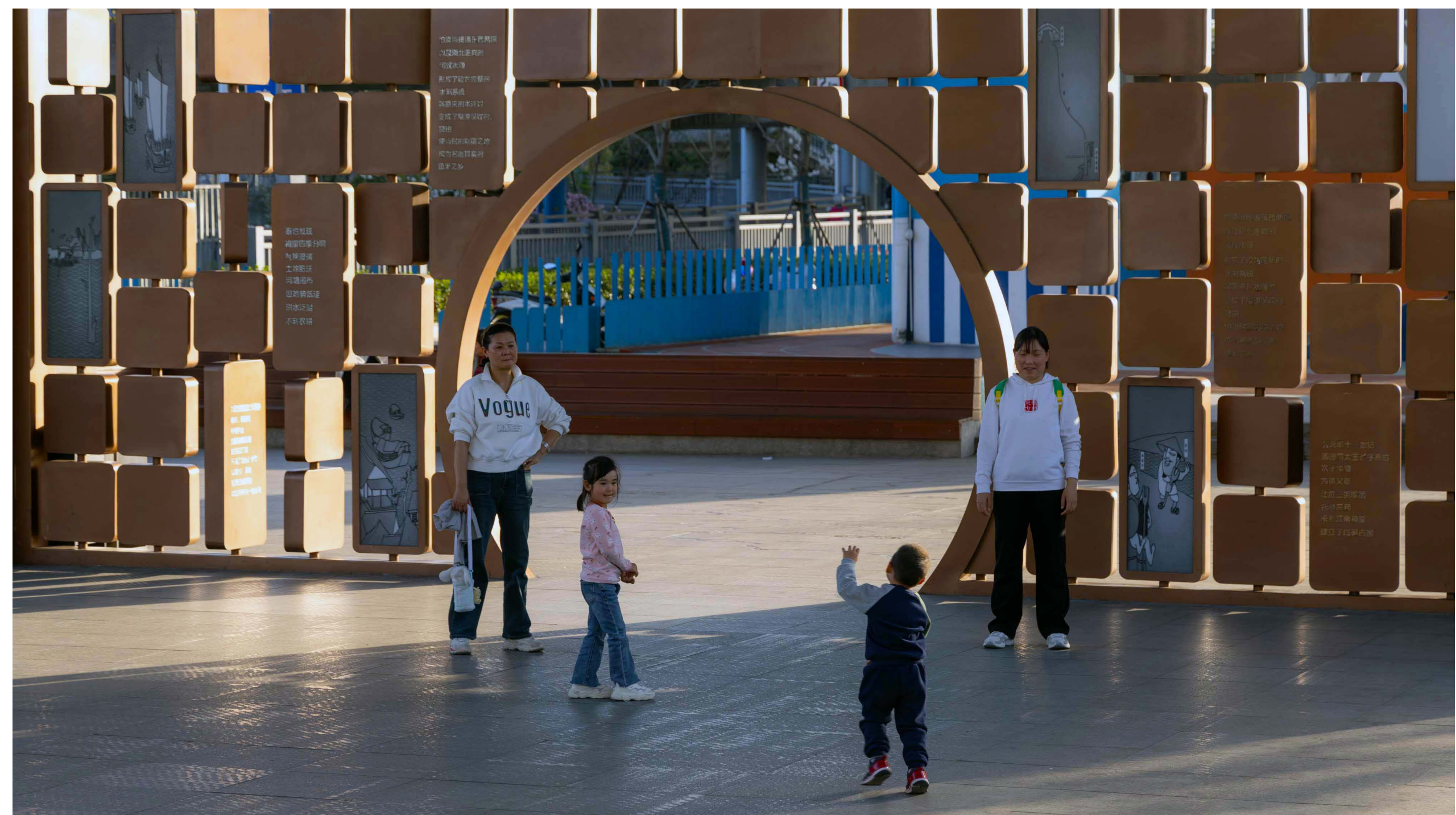


Before

THE ENTIRE SPACE UNDER THE ELEVATED BRIDGE HAS BEEN TRANSFORMED FROM A MESSY GRAY SPACE TO A DYNAMIC AND TRANQUIL AMUSEMENT PARK.







A LEISURE ACTIVITY VENUE THAT ACCOMMODATES THE ELDERLY, CHILDREN, AND YOUTH





THE DESIGN RESPECTED THE ORIGINAL FUNCTIONS FOR THE CITIZENS AND HAS TURNED THIS UNDER BRIDGE SPACE INTO A CHESS&CARD CLUB



## PROJECT NARRATIVE

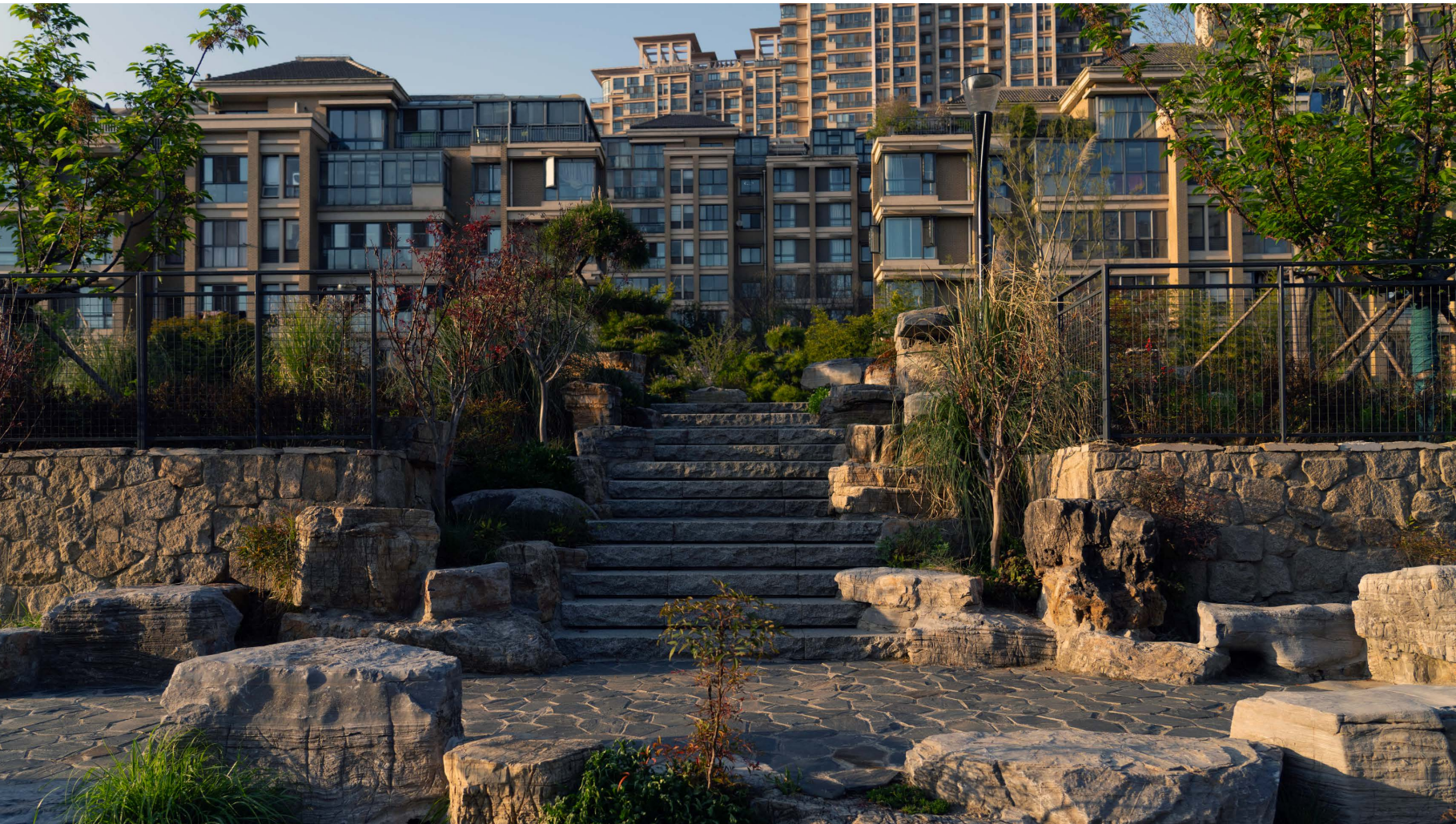
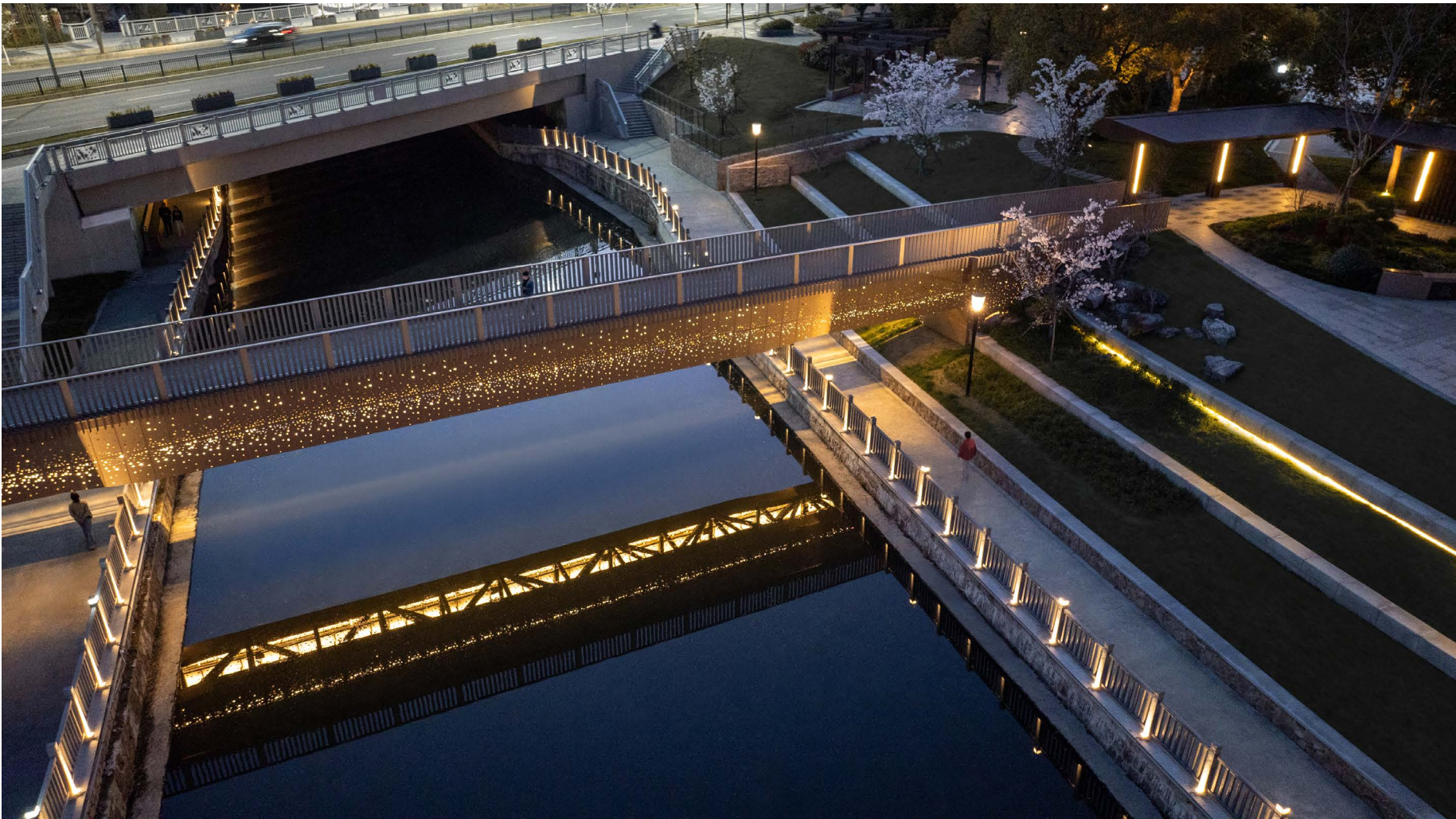
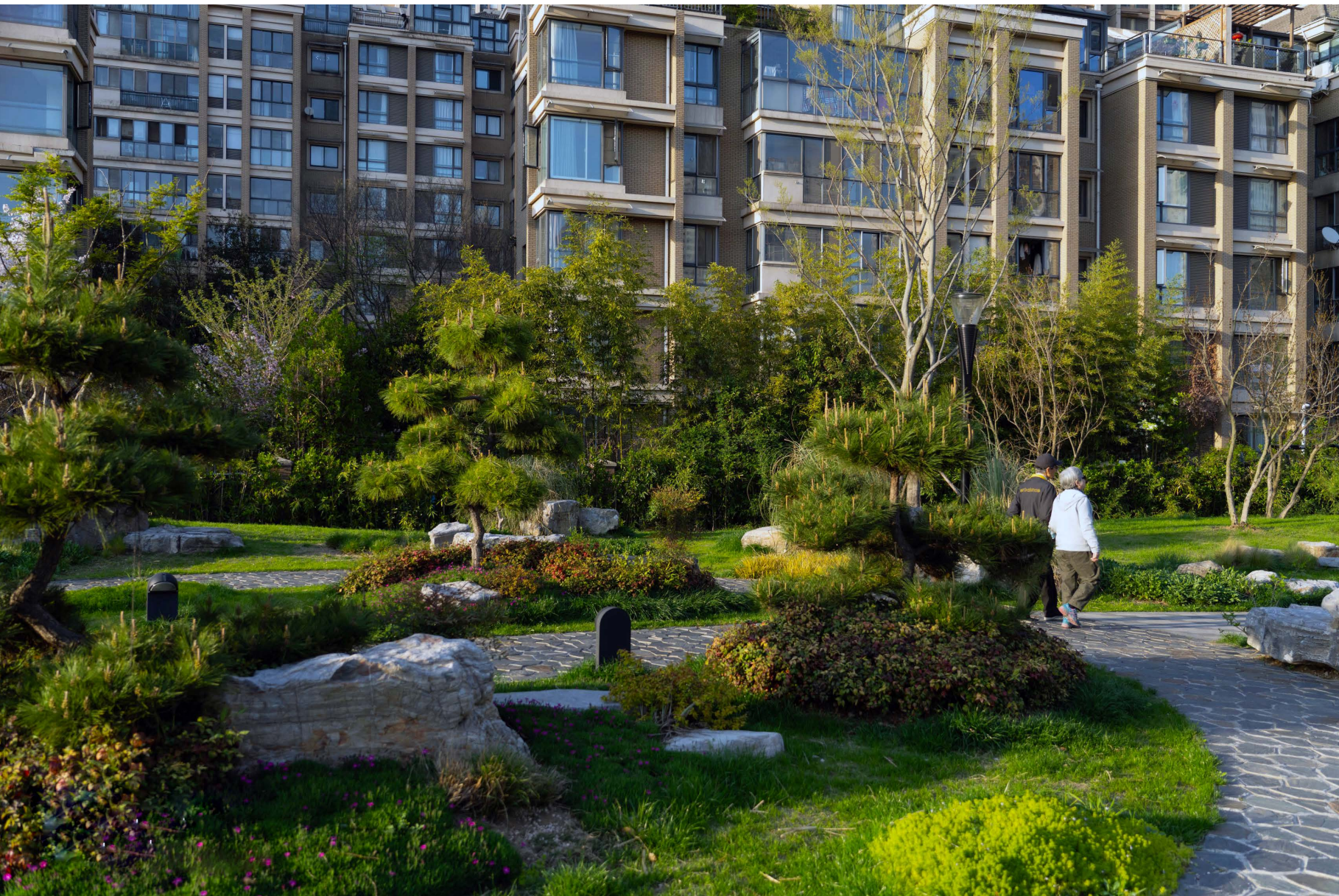
### Sharing Parking between Communities and Schools

Sharing parking between communities and schools nearby to solve the problem of difficult parking issue in the community

This renovation has included the renovation of a playground in the middle schools nearby, and underground parking lots have been set up under the playground. The surrounding residents can use this space to park, which help solving the insufficient parking in the old campus due to the retreat of the wall, and also providing more parking spaces for residents.

At the same time, pedestrian bridges have been added to effectively connect the community and the school. Residents can walk to the community through the pedestrian bridge after parking. Meanwhile, the old and dilapidated vertical revetment has been optimized and transformed into a two-stage revetment platform.

The original green space has been sort out and with the concept of “community botanical garden”, various plantings and flowers provided great leisure places for the locals.



PEDESTRIAN BRIDGES HAVE BEEN ADDED TO EFFECTIVELY CONNECT THE COMMUNITY  
OLD AND DILAPIDATED VERTICAL REVETMENT HAS BEEN OPTIMIZED AND TRANSFORMED INTO A TWO-STAGE REVETMENT PLATFORM





BRINGING CONVENIENCE TO LOCAL RESIDENTS  
BRIDGES TO CONNECT THE BREAKPOINTS, COMMUNITIES AND SCHOOLS





WITH THE CONCEPT OF "COMMUNITY BOTANICAL GARDEN", VARIOUS PLANTINGS AND FLOWERS PROVIDED GREAT LEISURE PLACES FOR THE LOCALS









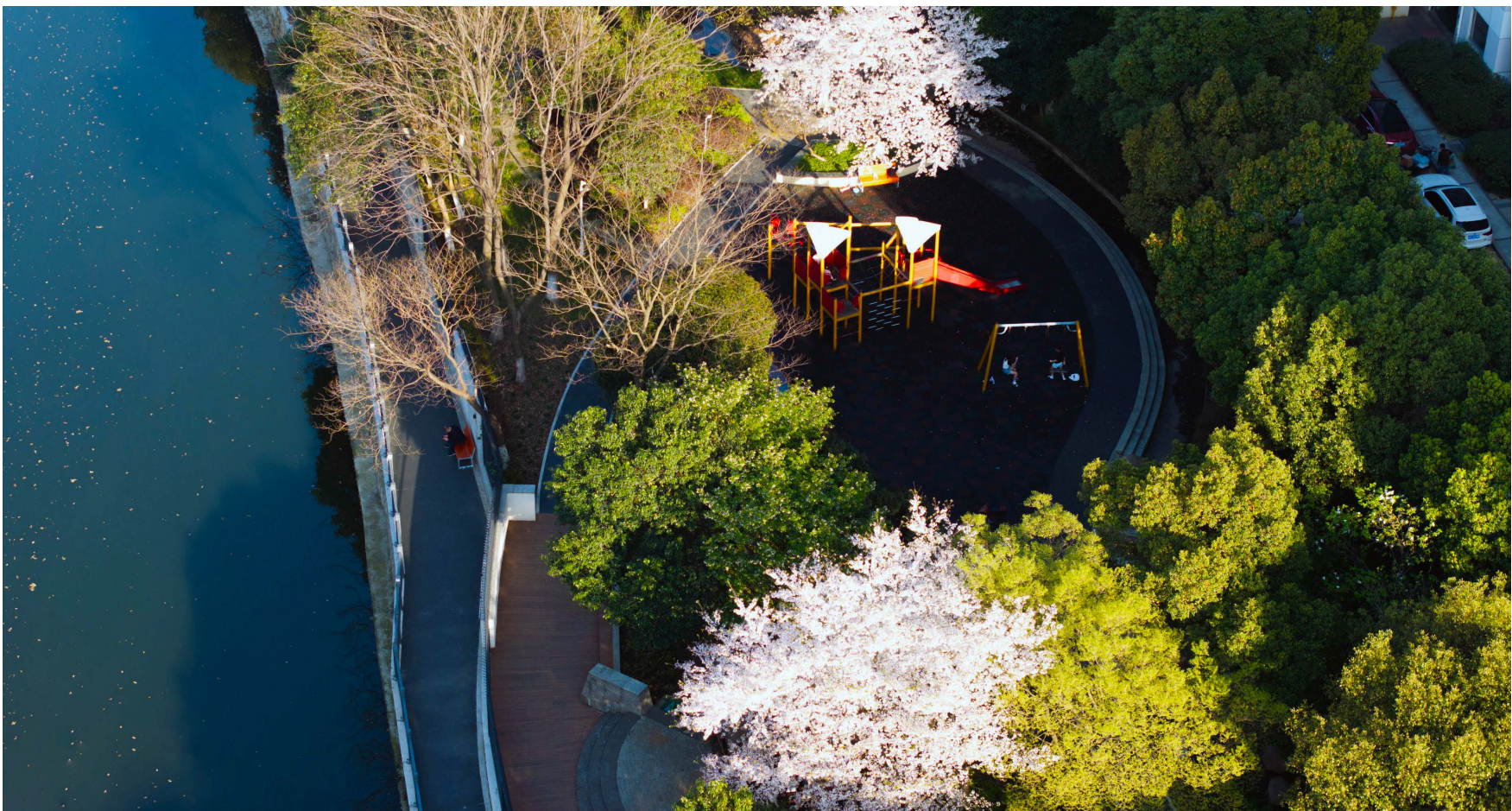
MULTIPLE CHILDREN'S PLAYGROUNDS TO MAKE UP FOR THE LACK OF PUBLIC HEALTH SUPPORT FACILITIES IN THE AREA



PROJECT NARRATIVE

Creating Functional Nodes  
& Supplementing Service Facilities

Considering the high proportion of resettlement housing communities along the line and the extreme lack of service facilities in old communities (especially for old people and children), the design team has chosen suitable locations to build multiple children’s playgrounds, commercial water streets, intelligent fitness stations, parking lots, etc., which help reducing the service radius, improving service facilities, and making up for the lack of public health support facilities in the area.



CHOSING SUITABLE LOCATIONS TO BUILD MULTIPLE CHILDREN'S PLAYGROUNDS, COMMERCIAL WATER STREETS, INTELLIGENT FITNESS STATIONS, PARKING LOTS, ETC. TO HELP REDUCING THE SERVICE RADIUS AND MAKING UP FOR THE LACK OF PUBLIC HEALTH SUPPORT FACILITIES.





PARK ENTRANCE VIEWED FROM XINGCHANG SOUTH ROAD

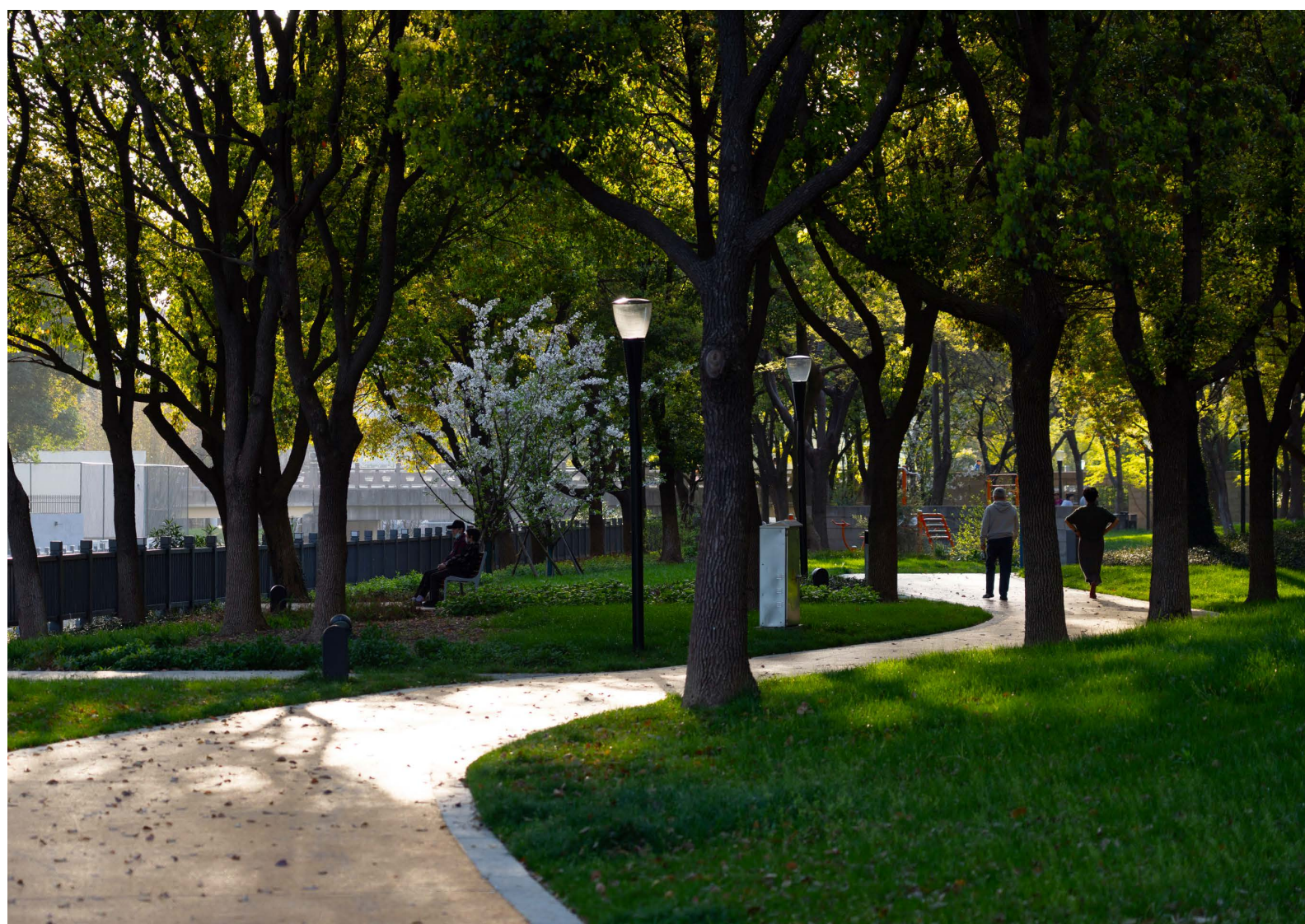




## PROJECT NARRATIVE

### Optimize the Site Ecological Content

The big trees are the soul of the old community. The project carefully preserved the trees on the site, while also sorting out the understory space, adding rain-water gardens, sunken wetlands, etc., to optimize the original ecological background.



OPTIMIZE THE ECOLOGICAL CONTENT OF THE SITE

