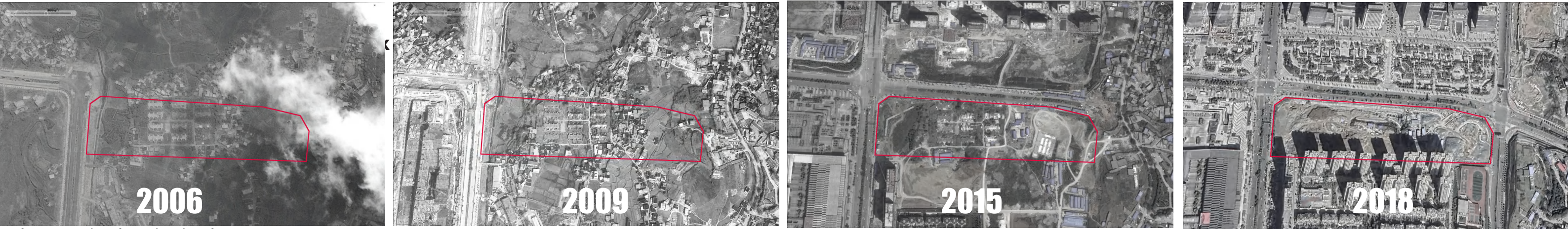


NATURAL ART RESPONDS TO URBAN CHANGE

MIDEA UNDER LIGHT PARK CENTRAL PARK + UNDERGROUND COMMERCIAL SPACE

The project is located in Guiyang City, China. The whole city is located in a mountainous area, and Guiyang is known as a small mountain city. It's karst landform, this unique geographical feature is the beautiful scenery of this city. However, in the past 20 years, the rapid development of cities and the construction of high-density business centers have gradually made people lose their memory of the mountain cities. In order to continue the memory of the place, we hope to respond to urban changes with natural art.

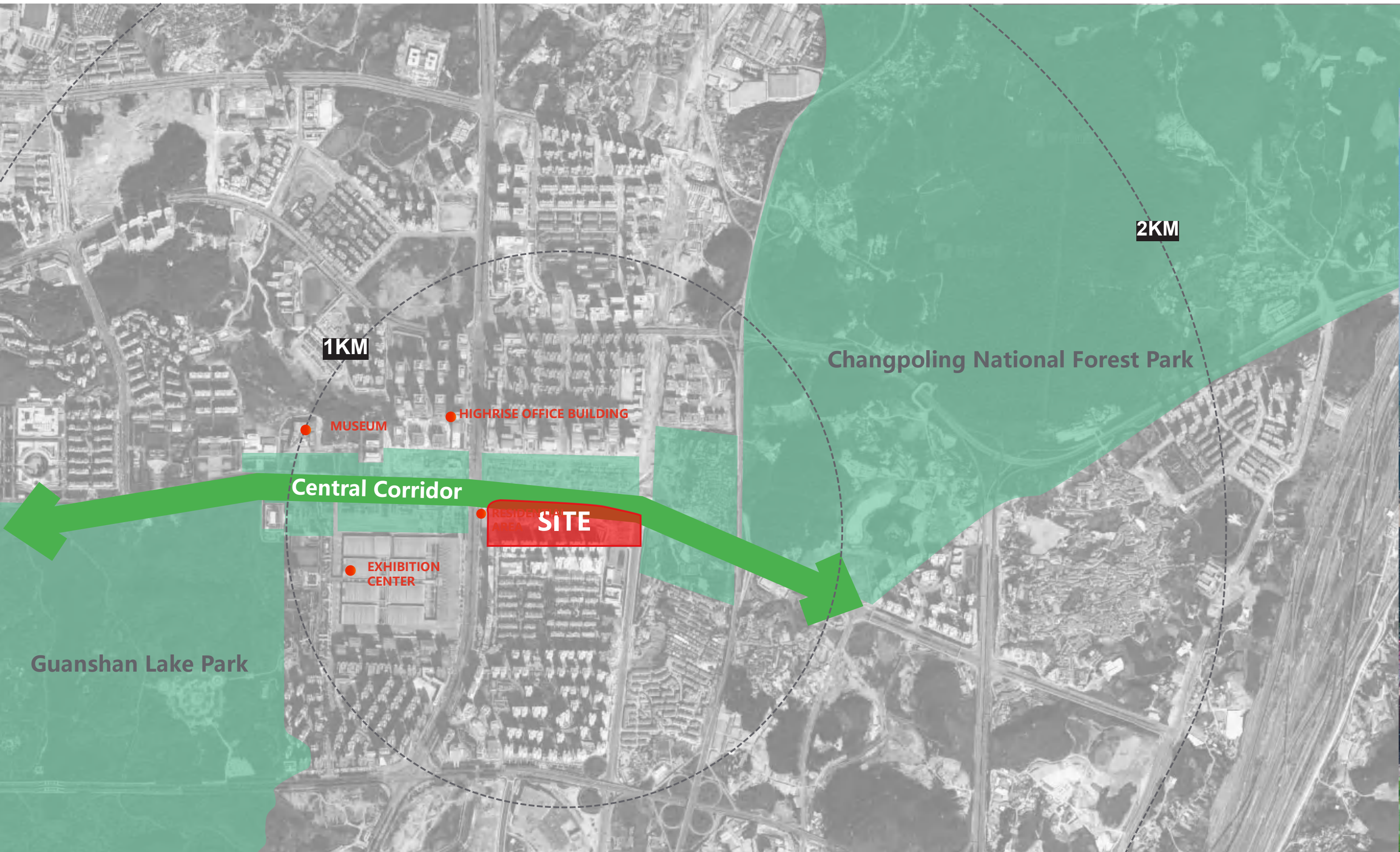
The project is a green space in the center of the city, total area is about 88153M². The local government hopes to endow the land with more commercial value by planning underground retail space. How to balance the relationship between commercial space and public green space is a major challenge of this project.



Changes in the city in the past 20 years



Part of the city's central green corridor



LINK TO THE CITY

As part of the green corridor in the city center, it plays a role in connecting surrounding open space.



MOUNTAIN
THE UNIQUE TOPOGRAPHY OF
THE CITY

CENTRAL BUSINESS DISTRICT

RESIDENTIAL
AREA

SITE
UNDER CONSTRUCTION

EXHIBITION CENTER

MUSEUM & LIBRARY

CENTRAL CORRIDOR

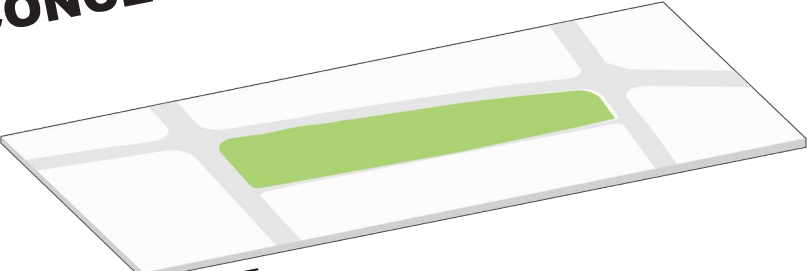
The Unique Karst Landform

where the city is located is a beautiful scenery of the city, but the high-density building development cannot feel this unique scenery in the city.

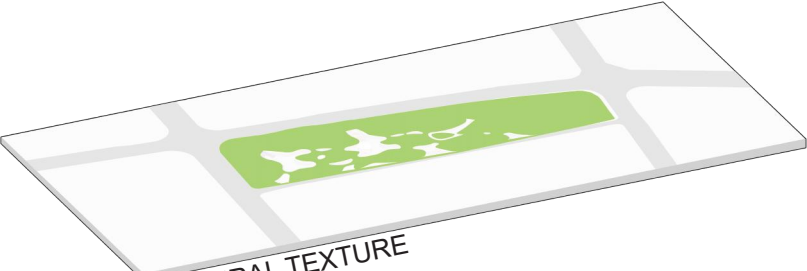
We hope to reflect the topographical characteristics of the city in the project



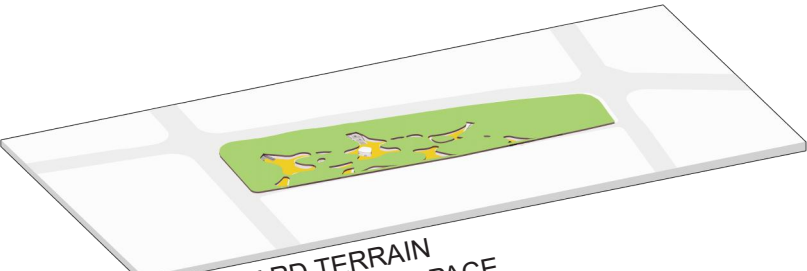
CONCEPT DIAGRAM



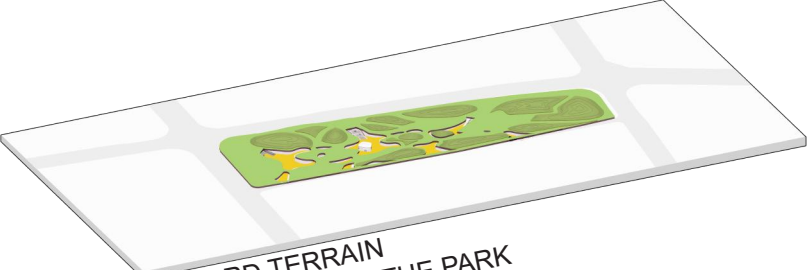
1 THE SITE



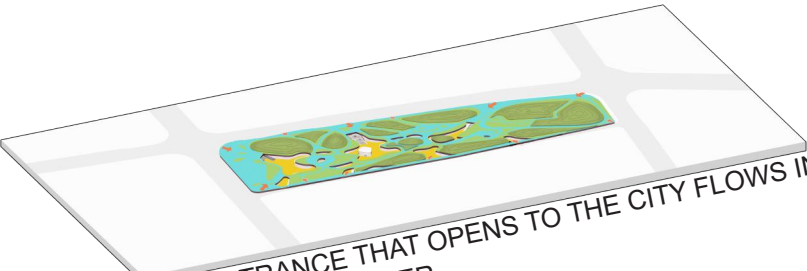
2 NATURAL TEXTURE



3 DOWNWARD TERRAIN AS UNDERGROUND SPACE



4 UPWARD TERRAIN AS LANDFORM IN THE PARK

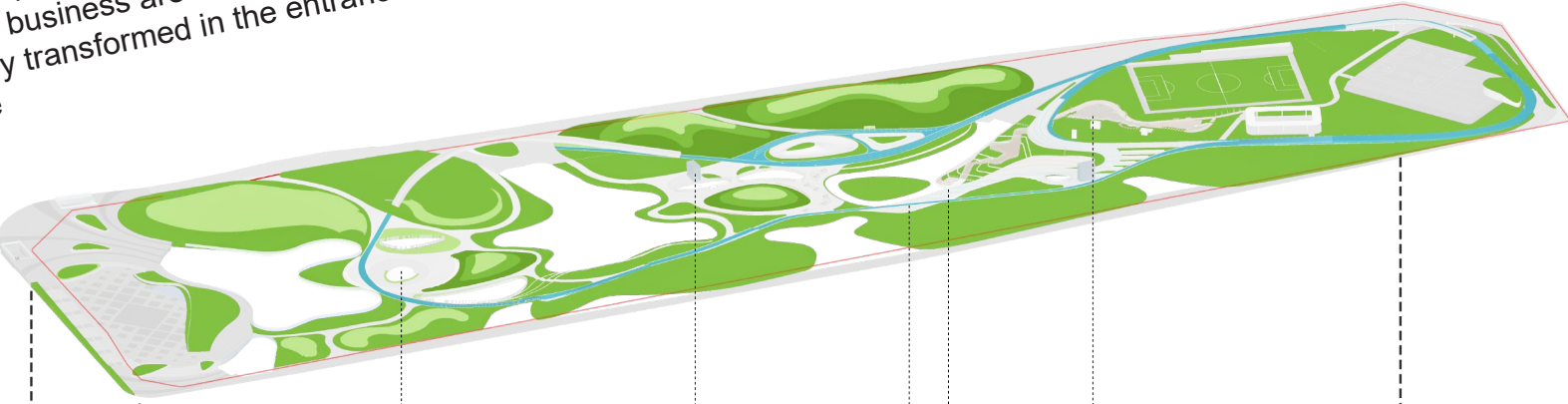


5 THE ENTRANCE THAT OPENS TO THE CITY FLOWS INTO THE SITE LIKE FLOWING WATER

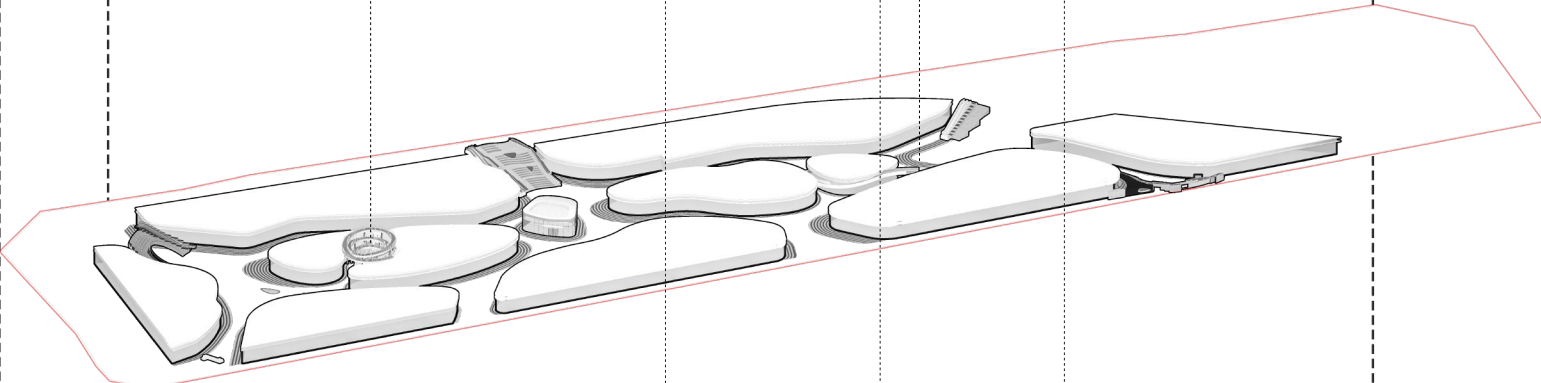
SPATIAL STRUCTURE

We don't want the park space to be overly commercialized. The park and the business are two independent moving lines, but they can be freely transformed in the entrance area and the core functional space

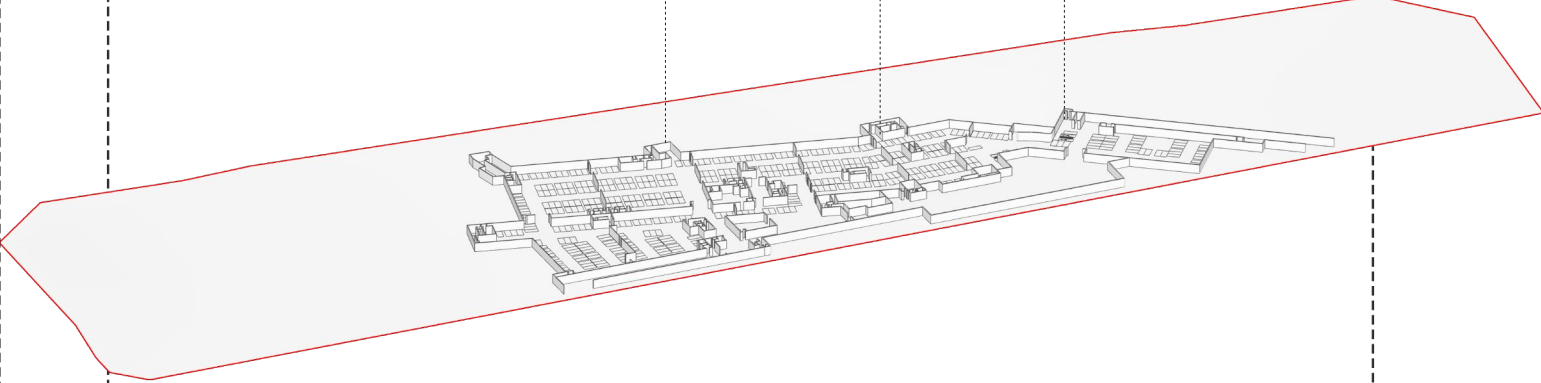
PARK LEVEL



COMMERCIAL SPACE



UNDERGROUND PARKING

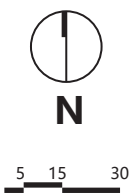


OVERALL LAYOUT

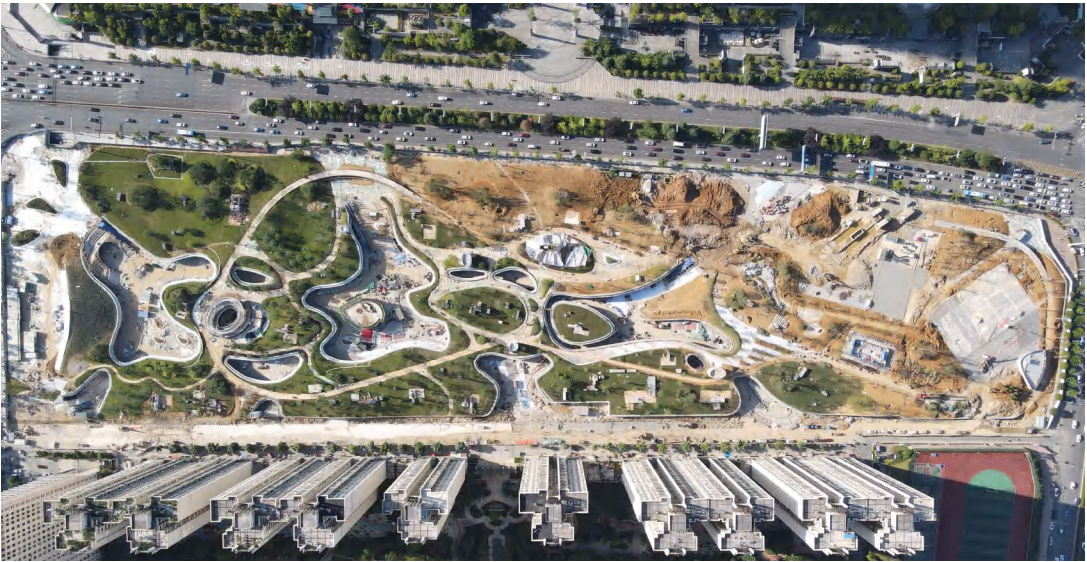


MASTER PLAN

- 1 Entrance
- 2 Running Path
- 3 Commercial Square
- 4 Spiral Ramp
- 5 Roller Skating Sports Area
- 6 Ball Court
- 7 Children Play



UNDER CONSTRUCTION







Landscape Bridge

is set at the main entrance of the commercial space so that the park path and the commercial path do not interfere with each other. At the same time, from the perspective of the city interface, the landscape bridge is also a landmark landscape of the city.



Running Path

The running path that runs through the entire park is also the only main loop of the park. In addition to providing a place for surrounding residents to exercise, it also connects the main spaces of the park in series.





The Spiral Ramp

The spiral ramp is not only a corridor connecting the upper and lower floors, but also a landmark landscape of the park



Rain Garden & Nature Play

The natural concave terrain forms a rain garden, and the natural stone and wood settings provide a natural place for children to play.



Roller Skating Space

This is an open roller skating area, which is multi-functional, not just roller skating, children can play together freely in this space



The relationship between parks and underground commerce

