

# Project Title

**INHERITANCE AND RESHAPING——IMPLEMENTATION OF HUMANIZED RENEWAL IN ZHANGJIABU PARK, XI'AN**

## Project Statement

The conversion of Zhangjiabu Park is a typical exploration of public space renewal that addresses the real needs of the public. Unlike demolishing the old park and rebuilding a brand-new park, this project started with the over 1,200 existing large trees on the site and created a higher-level ecological service circle through the “preservation-supplement-enhancement” approach. By integrating sports facilities and the leisure spaces most needed by citizens, it formed a sustainable park space of “ecology + living”, which serves nearly 200,000 community residents in the surrounding area and has revitalized the nearby community and commerce. This project fully demonstrates the maximization of ecological, social, and economic benefits.

# Project Narrative and Contents

## 1 Location

The base is located at the northern end of Xi’an, Shaanxi Province. It is one of the most densely populated areas and an important open space in Xi’an, covering an area of approximately 70,000 square meters. As a scarce open space, it is shaded by large trees and has an excellent ecological environment, a highly valuable “emerald”. The base was initially constructed in 1996 and is 28 years old. It has witnessed the urban development of northern Xi’an over the years and has left wonderful memories on the minds of numerous citizens. Therefore, its outdated spatial environment was incorporated into the renewal plan.

## 2 Surroundings and Population Analysis

The base is located in the political center of Xi’an, surrounded by multiple government agencies and associations. Additionally, there are 28 communities and 3 large comprehensive shopping malls (covering an area of 500,000 square meters for commercial purposes) adjacent to the base, and a population of up to 200,000 are within the 15-min pedestrian neighborhood. The space users come from the surrounding residential areas, including the elderly and young, with a significant increase in young and middle-aged visitors during holidays. The peak activity times are mostly at noon and in the evening. The needs of the population and their activity times are the foundation for the site’s renewal.

## 3 Current State and Problems

Although the site is the most important public space in the built-up area, it had been isolated from vitality due to the lack of socially just design, inefficient ecological services, and a gap in cultural memories.

Lack of social justice: The original site lacked social equity and justice as disadvantaged groups and special groups did not receive care and attention; the park’s visitors consisted only of a group of morning exercisers who only engaged in activities around the equipment. The landscape in the park was monotonous and uninteresting, unable to attract citizens.

Inefficient ecological services: The fragmented green spaces could not retain water, the pavements were impermeable, and water accumulated on rainy days.

Lack of cultural attributes: It gave no cultural memories and we could find no culture here.

# Project Narrative and Contents

## **4 Design strategy ——From an inefficient, uninteresting, god’s-eye-view axis to an ecological, interesting, and human-centered axis.**

### **I: Enhancing Ecosystem Services**

As one of the main near-nature spaces in the built-up environment, park green spaces are a provider of many ecosystem services. The biggest highlight of the park is the preservation of all the original 1,200+ large trees. By adding rich plant communities, the ecological service functions have been enhanced, more natural ecological circles and biospheres have been created, and the ecological benefits of the park are fully realized. After the conversion of the base, it has played a positive role in regulating the microclimate, supporting biodiversity, Low-intervention design, , and ecological education.

### **II: Fairness and Justice-Friendly Design**

Social equity and justice in park design emphasize that park facilities should be evenly distributed and inclined toward specific disadvantaged groups. The converted site is based on demographic profile research and provides equal and effective facilities for senior citizens, families, children, unemployed individuals, and people with disabilities. It is also equipped with friendly facilities such as washbasins, accessible ramps, lockers, and vending kiosks.

Senior citizens are regular visitors here. Their favorite activities include dancing, singing, and playing musical instruments. Their favorite sports are fitness, table tennis, and gate ball.

Young people appear with their families, and any place can be their stage. The park therefore provides diverse areas for rest and recreation.

The children’s space has been scientifically expanded by division based on age groups. It is not only kept away from dangerous areas with traffic but also has a reasonably increased area.

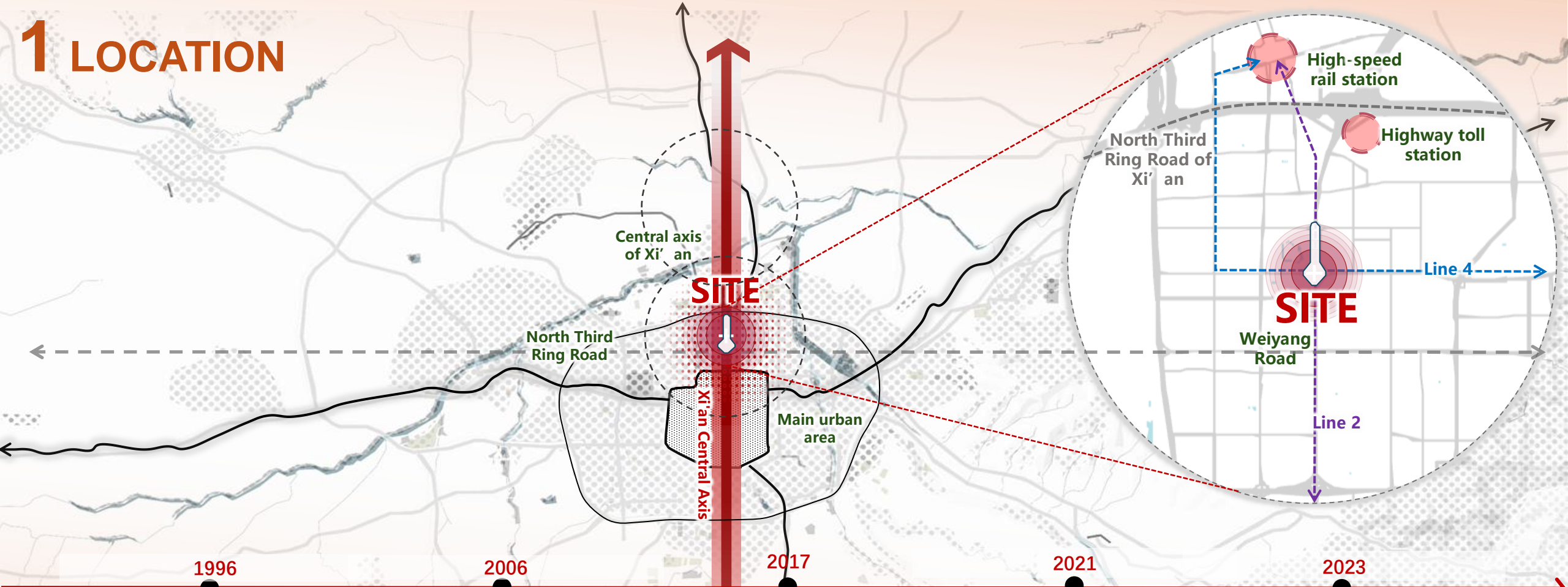
### **III: Urban Culture Design**

Zhangjiabu Park is transforming from a green isolated island with no culture into a civic park with urban cultural characteristics. The park has demonstrated multiple distinctive cultural landscapes, which have enhanced the park’s visibility and appeal. The ground interactive light show features an introduction to Xi’an’s culture, and the landscape pavilion opens its arms to the world, symbolizing openness and sharing. The designers hope this park can become a regional landmark and remain in people’s memories.

### **IV: Co-built and Shared by the Communities**

At the beginning of the project, forums with residents were held to listen to their real demands. This allowed the project to tap into the potential of the site while enhancing residents’ sense of belonging to the community and sense of fulfillment. In the advancement of the plan, a plan selection activity was organized where designers communicated with residents about multiple plans in depth, gathered opinions, and integrated and optimized these plans to ensure that the upcoming public space comprehensively and accurately would meet the residents’ needs.

# 1 LOCATION



1996

2006

2017

2021

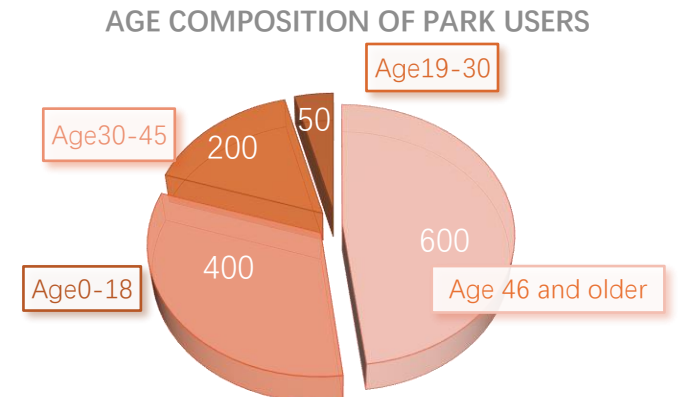
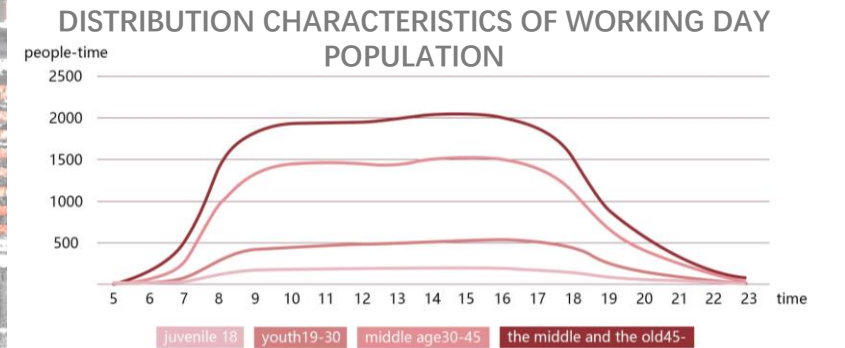
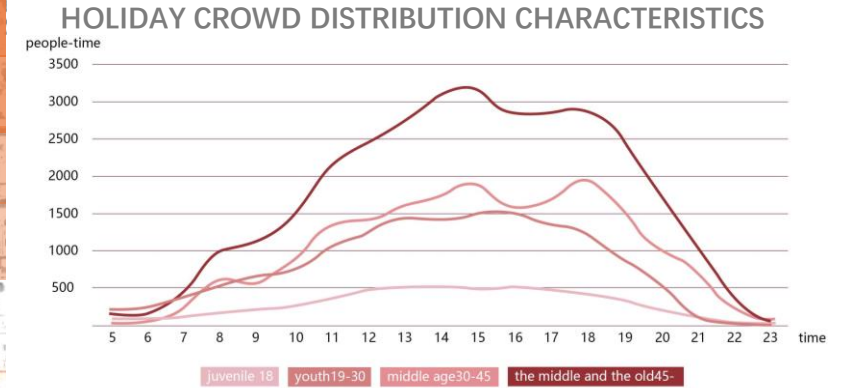
2023



The base is located at the northern end of Xi'an, Shaanxi Province. It is one of the most densely populated areas and an important open space in Xi'an, covering an area of approximately 70,000 square meters. As a scarce open space, it is shaded by large trees and has an excellent ecological environment, a highly valuable "emerald". The base was initially constructed in 1996 and is 28 years old. Therefore, its outdated spatial environment was incorporated into the renewal plan.



# 2 LOCATION





# 3 CURRENT STATE AND PROBLEMS



## LACK OF SOCIAL JUSTICE

01



## INEFFICIENT ECOLOGICAL SERVICES

02



## LACK OF CULTURAL ATTRIBUTES

03



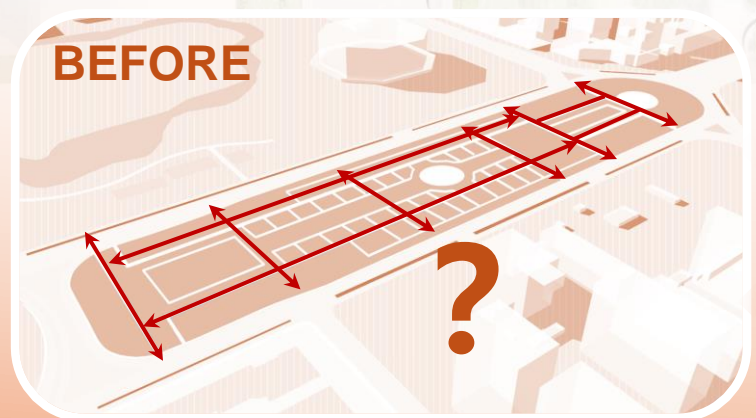
Although the site is the most important public space in the built-up area, it had been isolated from vitality due to the lack of socially just design, inefficient ecological services, and a gap in cultural memories.



# 4 STRATEGY

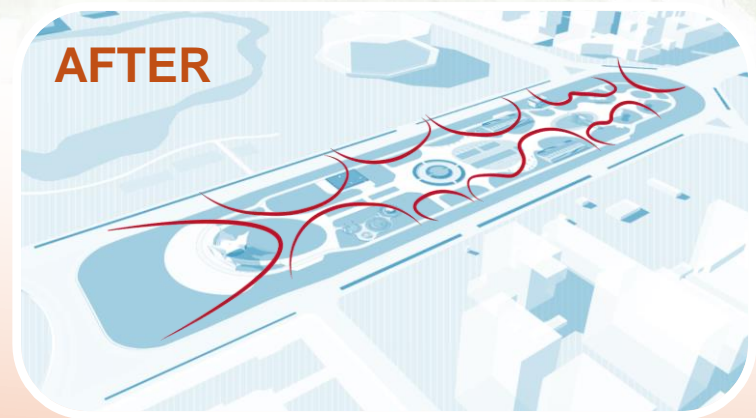


function		landscape	
01	Rainbow runway	10	Theme sculpture
02	Table tennis Court	11	City Gardens
03	Fitness area	12	Interactive water features
04	Chess and card area	13	Willow Garden
05	Children's area	14	Central Square
06	Activity square	15	Cherry blossom forest
07	Understory rest space	16	Sunny lawn
08	Gateball court		
09	Lounge area		



## 4 STRATEGIES TO

- I: ENHANCING ECOSYSTEM SERVICES
- +
- II: FAIRNESS AND JUSTICE-FRIENDLY DESIGN
- +
- III: URBAN CULTURE DESIGN
- +
- IV: CO-BUILT AND SHARED BY THE COMMUNITIES



FROM AN INEFFICIENT, UNINTERESTING, GOD'S-EYE-VIEW AXIS TO AN ECOLOGICAL, INTERESTING, AND HUMAN-CENTERED AXIS.



# 5 ENHANCING ECOSYSTEM SERVICES

1200

RESERVED TREES

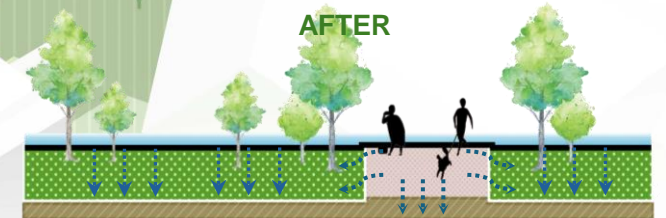
sycamore×4

44,000M<sup>2</sup>

INCREASE GREEN SPACE AREA

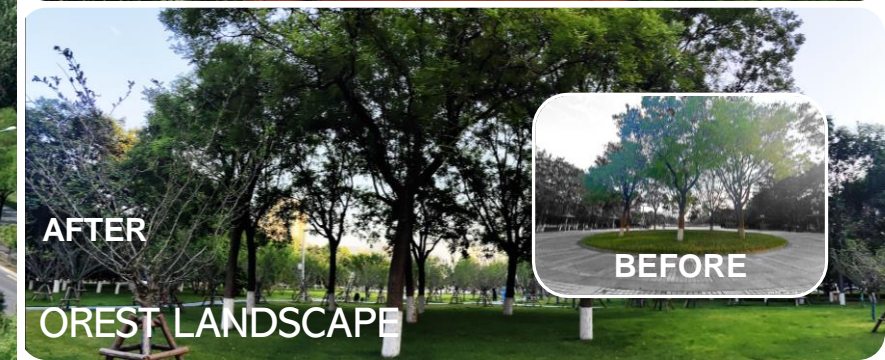
40,000M<sup>2</sup>

TRANSFORMING ECOLOGICAL PAVING



As one of the main near-nature spaces in the built-up environment, park green spaces are a provider of many ecosystem services. The biggest highlight of the park is the preservation of all the original 1,200+ large trees. By adding rich plant communities, the ecological service functions have been enhanced, more natural ecological circles and biospheres have been created, and the ecological benefits of the park are fully realized.







# 5 ENHANCING ECOSYSTEM SERVICES



COEXISTENCE BETWEEN HUMANS AND NATURE



PARTICIPATING ECOLOGY





# 5 ENHANCING ECOSYSTEM SERVICES

Adjusting  
microclimate

$CO_2$

$O_2$

Low-  
intervention  
design

Ecological  
education

Biodiversity  
and  
microclimate

After the conversion of the base, it has played a positive role in regulating the microclimate, supporting biodiversity, Low-intervention design, and ecological education.



ADJUSTING MICROCLIMATE



SUPPORTING BIODIVERSITY



SUPPORTING BIODIVERSITY



ECOLOGICAL EDUCATION

石榴树  
(Pomegranate trees)  
千禧系列，石榴属落叶灌木或小乔木，一般树高3-5米，全株可长到10米，枝条常具刺，幼枝有鳞片无毛，老枝近圆筒形，叶簇生为对生，长圆状披针形，深绿色，嫩芽为红或淡黄色；花期为5-6月，花冠白色；果实为核果，通常深红色或紫红色，有时白色，肉质白色，种子多数，肉质种皮为淡红色或乳白色。



# 6 FAIRNESS AND JUSTICE-FRIENDLY DESIGN



Social equity and justice in park design emphasize that park facilities should be evenly distributed and inclined toward specific disadvantaged groups. The converted site is based on demographic profile research and provides equal and effective facilities for senior citizens, families, children, unemployed individuals, and people with disabilities.

## ETHNIC DANCE TRADITIONAL TIBETAN DANCE IN CHINA



## SYMPHONY ORCHESTRA THE PERFORMANCE STAGE IN NATURE





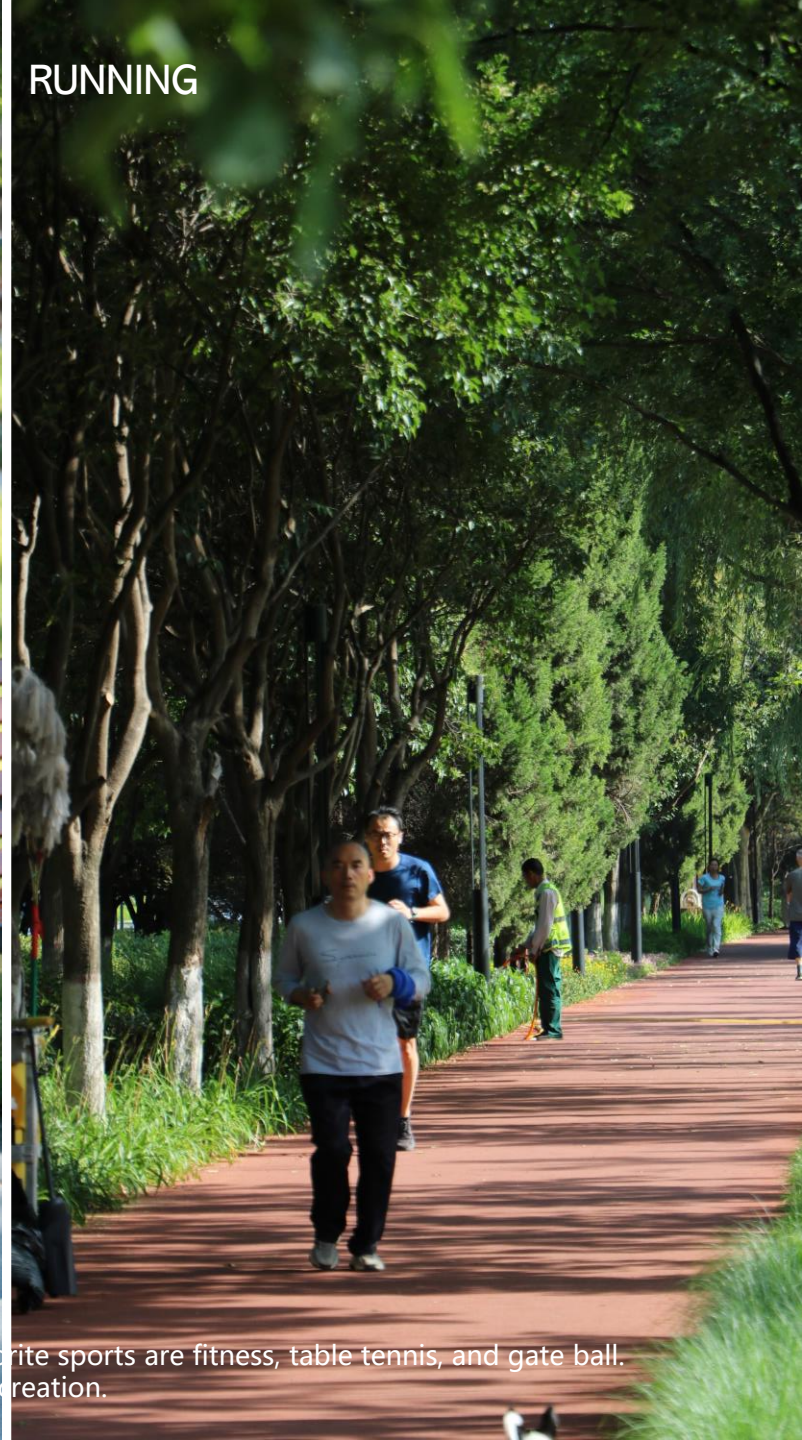
# 6 FAIRNESS AND JUSTICE-FRIENDLY DESIGN



GATE BALL SPORTS



LEISURE WALK



RUNNING

Senior citizens are regular visitors here. Their favorite activities include dancing, singing, and playing musical instruments. Their favorite sports are fitness, table tennis, and gate ball. Young people appear with their families, and any place can be their stage. The park therefore provides diverse areas for rest and recreation.



# 6 FAIRNESS AND JUSTICE-FRIENDLY DESIGN



The underground of the central square is a substation, and the above ground is a multifunctional activity area

## FITNESS ACTIVITIES



## PLAY TABLE TENNIS





# 6 FAIRNESS AND JUSTICE-FRIENDLY DESIGN

The children's space has been scientifically expanded by division based on age groups. It is not only kept away from dangerous areas with traffic but also has a reasonably increased area.

Area 100 square meters  
A play area for young children

Area 200 square meters  
Play area for older children

Area 90 square meters  
Comprehensive gaming area

Area 50 square meters  
parental care area

renovation design

1  
Nature

Natural touch  
Natural colors

2  
Dynamism

Brave attempt  
Climbing exploration

3  
Artistic

Interactive stage  
Talent display  
Creative thinking

4  
Home

Personally exploring  
Interactive facilities



# 7 URBAN CULTURE DESIGN



Zhangjiabu Park is transforming from a green isolated island with no culture into a civic park with urban cultural characteristics. The park has demonstrated multiple distinctive cultural landscapes, which have enhanced the park's visibility and appeal. The designers hope this park can become a regional landmark and remain in people's memories.



ZHANGJIABU PARK LOGO



RUNWAY PATTERN



XI'AN THEME CULTURAL



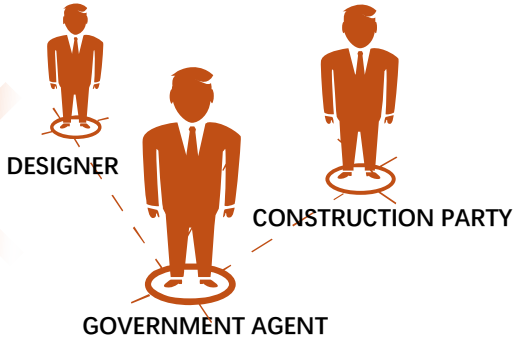
XI'AN THEME PROJECTION



# 8 CO-BUILT AND SHARED BY THE COMMUNITIES



PUBLIC PARTICIPATION



DESIGN UNDER  
PUBLIC FEEDBACK



SELECT AND OPTIMIZE  
MULTIPLE OPTIONS



ACCOMPANYING  
DESIGN



LOW-IMPACT  
CONSTRUCTION

FOCUSING ON PUBLIC NEEDS

MULTI-PARTY PARTICIPATION  
IN REVISION

CO-BUILT BY COMMUNITIES

HIGH-LEVEL AND HIGH-  
STANDARD CONSTRUCTION



STREET INTERVIEWS

SITE INVESTIGATIONS

CONCEPTUAL DESIGN

REVISION BY MULTI-  
PARTY

DESIGN PUBLICITY  
FOR OPINIONS

CONSTRUCTION  
GUIDANCE



At the beginning of the project, forums with residents were held to listen to their real demands. This allowed the project to tap into the potential of the site while enhancing residents' sense of belonging to the community and sense of fulfillment. In the advancement of the plan, a plan selection activity was organized where designers communicated with residents about multiple plans in depth, gathered opinions, and integrated and optimized these plans to ensure that the upcoming public space comprehensively and accurately would meet the residents' needs.



# 9 OVERALL IMPRESSION

2.1 HECTARES  
WILLOW GARDEN

1.6 HECTARES  
CENTRAL SQUARE

1.1 HECTARES  
GATEBALL COURT

1.0km  
RAINBOW RUNWAY

0.2 HECTARES  
TABLE TENNIS COURT

0.25 HECTARES  
CHILDREN'S AREA

0.3 HECTARES  
SUNNY LAWN

28 REVITALIZED SURROUNDING COMMUNITIES

60 NEW FACILITIES

90% RESPONDENTS SATISFIED WITH THE LEISURE EXPERIENCE

200,000 ATTRACTING PEOPLE WITHIN THE 15-MIN PEDESTRIAN NEIGHBORHOOD