

IFLA AAPME Awards 2024  
A. Built Categories - 8. Social and Community Health

# REJUVENATE EVOCATIVE ANCIENT SZE MAU CHUNG WATERSIDE SCENES OF WELL- COMMUNAL MULTI-CULTURE AND LIFE SHARING PROMENADE

Liwan District, Guangzhou City, Guangdong Province, China





# PROJECT TITLE

Rejuvenate Evocative Ancient Sze Maa Chung Waterside Scenes Of Well-Being:  
Communal Multi-Culture And Life Sharing Promenade,  
Liwan District, Guangzhou City, Guangdong Province, China

## PROJECT STATEMENT

Sze Maa Promenade is a urban rejuvenation project, located at *Rainbow Community* of Liwan District, western Guangzhou City, China. It is the birthplace of 'Liwan', which Cantonese means 'Lychee Water Bay': scenes of densely waterways, ponds and sloughs abound, fragrant trees, its flourishing, and residing villages. With urban sprawl, radical era of municipal investments caused the mishandled relationship of environment and people, our design aims to repair it. Once water village life of well-being has turned into densely populated blocks decay, facing challenges of scarce public space and infrastructures, lacking resilient space, missing culture characteristics, and community bonding.

The renewal design has traded off communal space use, daily subtle activities, native old trees living space, equal access, etc. By creating humanized infrastructures, exploring sharing value of stock space, reinterpret water life scenes and embrace community participation, promenade of multi-culture, life sharing and resilient micro activity space is created. Community engagement of open forums and residents' decision-making meetings run throughout, enhancing sense of cohesion and belongings. Today Sze Maa Promenade is a place where community yearns for daily, carrying the healthy and inclusive community with education, natural aesthetics, survey and reminiscent history alongside the waterway.





# PROJECT NARATTIVE AND CONTENTS

## SITE LOCATION,SCOPE AND BACKGROUND

The Ancient Guangzhou features ‘water city’ with densely waterways, where our site is the one. Located in Liwan District, western Guangzhou City, Southern China, the bimillennial Sze Maa watercourse, was essential broad way where commerce, civilian ships and troops entered ancient city from the west estuary of the Pearl River. Ponds and sloughs abound in every low spot through waterways, villages resided, villagers planted lychee trees on both sides. ‘Liwan’ where the site located means ‘Lychee Water Bay’ in Cantonese, featuring the regional water culture birthplace, where red-cloudy fruit and blooming fragrance overflowing for the time.

Running through 1.77-kilometers, as partial remaining 6-7-kilometers ancient waterway, the site carries changes of regional water civilization. Its current waterfront, containing water, covers an area of 65000 -square-meters, with average-width of 10 meters. Many poets and painters describes poetic landscape of the water city in their works. For ordinaries, it provides livelihood: ships from the west estuary dock here, where distribution center for agriculture and sideline products trading, with flourishing, countless ships trading, making the place "masts like forests", vibrantly.

## STATUS SURVEY

In the last three decades, urban sprawl cased waterway shrunk or even disappeared. The radical era of economic expansion has brought huge infrastructure investments, which has caused mishandled relationship between people and environment, witnessed surroundings from prosperity to decline. We aims to repair it. Once waterside well-being has turned into blocks decay with enclosed green land, inaccessible to water transversely, unattractive linear landscape at glances, no desire for resting and disconnection between site and blocks. It faces challenges of scarce public spaces, infrastructures, also unsustainable space utility, lacking culture characteristics, identity, and weak social bonding.

Repairing doesn’t simply remove rigid upper square and restore waterway in the interstitial space of overdeveloped district. While control within budgets, design has traded off demand for aged communities, subtle groups’ activities , native old trees living spaces, equal access, comprehensive communities, aborinigality, and ignored human needs, in terms of communal life services, space sharing, culture and social bonding. We strives to optimize stock space with minimal interventions, enabling space value, restore cultural connotation, and address problems of scarce public spaces, inconvenient life service to stimulate vibrant waterside life.

## CREATE CONVENIENT INFRASTRUCTURES

Poor communal infrastructures reflected in: no certain-scale gardens nearby, scarce activity space, no certain-routines to stroll and lacking convenient facilities. To resolve, project has renewed 3.54-kilometers walking-loop and 2.72-kilometers jogging trails, under limits of cramped space. It also clarifies traffic flows of people and vehicles. The linear landscape infuses ample and continuous strip stone-seating of around 1980 meters. Moreover, design has neutralized the height difference and enriched vertical space. Partial strip ladder stool acts as retaining soil, digesting the steep slope to water, and pro-nature urban furniture, convenient to people and promotes people gathering. Furthermore, segmented design among blocks along promenade concentrates on equal access among blocks, convenient life routines, and subtle behaviors of individuals or groups. Hence, renewal strip belt is formed. The humanized infrastructure have greatly improved the communal life service.

## EXPLORE SHARING VALUE OF STOCK SPACE

Humdrum spatial interface manifested in boring water-facing scenes, monotonous green space, disorder passage with unlcuid traffic and onefold space with inflexible and single function. Design has fostered community inclusion and diversity by exploring sharing value of stock space. Totally, it has revitalized around 23221-square-meters waterfront space area. Specifically, it adapts to the height difference, it reconstruct the boundary space length and breadth, activates entry access, and maximally enriches cramped space. Besides, design makes facilities compatible, increase use frequency, balance spatial allocation, enhance value of space sharing.

There are two typical interfaces neutralizing entry height-difference. One is enriching the steep grass slope, to form a wavy-flow-line planting pond terrace, which appropriately satisfies the growth-space of native trees, leaving the viewing points, and its streamline-shape is flexible to spatial avoidance, to stay rather than merely walk through. The other is implanting multi-layered grass steps with low intervention in enclosed grass slope, while retaining spatial value of eco-benefits, placing urban furniture that interacts with trees and faces water. Moreover, compatible traffic has reshaped spatial orders, allowing residents who stroll, jog, gather in the gradient space to act.

## REINTERPRET WATERSIDE LIVE SCENES & LIFESTYLES

Lacking cultural identity and characteristics manifested in fading unique life scenes and missing lifestyles of residing and gathering flourishing waterside. Based on the bimillennial history of Liwan in ‘water city’ where ‘densely waterways like lanes’, design infuses historical stories happened in Sze Mee, Rainbow Community into venue in modern ways to inherit to its residents and revitalize lively scenes residing water.

Firstly, we preserves vigorous growing fragrant tress of erstwhile ‘Lychee Water Bay’, it creates more visual focus around nature with picturesque ‘red cloudy’ shady and greenery watersides with intoxicating aroma. Then we renewed enclosed green land, add gentle grass slope to neutralize height difference, create pro-water opportunities, which brings cozy shady biophilic promenade and resting place that attract more people closer to nature. Moreover, cluttered ground covers that blocks roots were cleaned to highlight vitality, and interactive space with trees. Furthermore, we consulted scholars of local Water Heritage Museum for many times, sorted out representative imprints of Sze Maa about historical changes, Inlet villages, dragon-boat culture, ancient Rainbow Bridge but relics, old trees, simplified them into illustrations, and embedded into alongside signboards. It reinterprets venue elements and corresponds ongoing activities, which reinvigorate culture vitality, arouses awareness of site identity characteristics and spirits.

## ENBRACE COMMUNITY PARTICIPATION

The weak relations of site and community presented sense of alienation with no identity, no affiliation of surroudings and lacking popularity with no desire to gather and stay. Also, Sense of possessing water and green space is extremely weakened, even of detachment. To address these, dedesign offers sustainable educational base to enhance community enlightening, then increases recognition and lasting concerns on site. Besides, it create flexible and diverse micro activity-spaces that respect individuals or groups difference of blocks. Design has renewed Inlet Village Platform, Dragon Boat Platform, Tree Root Platform, Shady Platform, Bird Rearing Platform, Banyan Platform, Rainbow Terrace Planting Pond, Sponge Infiltration Grass Terrace, Grass Steps Platform and Rainbow Cultural Plaza to embrace resilient communal activity-spaces as possible, facilitating communal interactions, bonding and reducing division and antagonism, then promoting community inclusion. Preserving existing nature resources, designers rationally balanced relationship between ecological-interests space and human-activity spaces. Renovation of Micro diversified activity space is essential to enhance communal interactions.

Most importantly, project organizes and encourages community participation of residents’ decision-making meetings, open forums, workshops and embrace multi-cooperation throughout process, including water-related enterprises, governments, social organizations, caring enterprises, scientific research institute, education, environmental protection and health organizations, and other social welfare organizations. It enhances autonomy and rights to speak of co-constructing and co-protecting community environment. Consequently, residents as parts of it achieves sense of belonging, communal responsibilities and cohesion.

## CONCLUSION

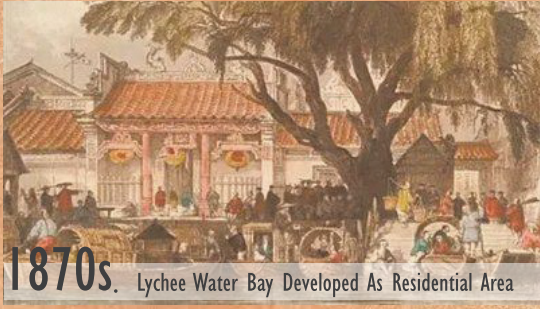
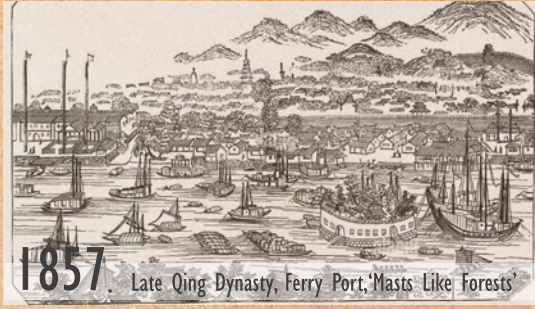
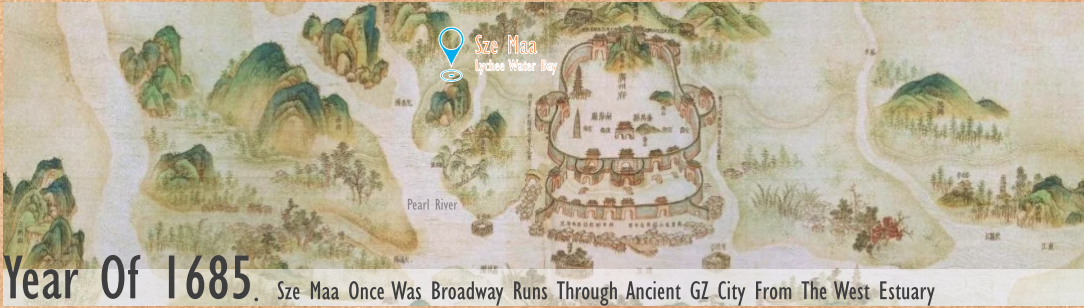
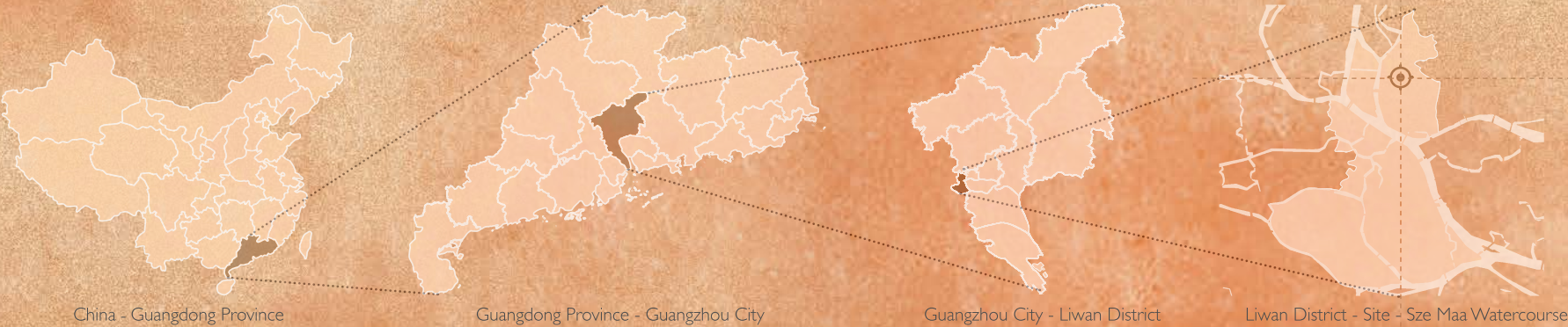
Sze Maa once was a natural waterway in west outskirts of ancient Canton, where picturesque scenes of red fruits, green trees, bridges, flowing water with boats sailing, merchants drinking tea by the windows or enjoying splendid view on attic, footsteps, barking, peddlers yelling, punters smiling to greet, boatmen selling Sampan Congee under the bridge, waterside market is bustling.

Although present Sze Maa no longer has function of shipping, the renovated promenade plays roles in improving urban water conservancy, livable environment and enhancing community co-construction, cultural recognition, community values, and inheriting regional culture. Today it is a place where community yearns for daily, carrying healthy, inclusive life sharing community of education, natural aesthetics, study and reminiscent history alongside.



# SITE LOCATION & BACKGROUND

The Ancient Guangzhou features **‘water city’ with densely waterways**, where our site is the one. Located in Liwan District, western Guangzhou City, Southern China, the **bimillennial Sze Maa Watercourse**, was essential broad way where commerce, civilian ships and troops entered ancient city from the west estuary of the Pearl River. Many poets and painters describes poetic landscape of the water city in their works. For ordinaries, it provides livelihood: ships from the west estuary dock here, where distribution center for agriculture and sideline products trading, with flourishing, countless ships trading, making the place **"masts like forests"**, vibrantly.



City And Suburbs Of Canton, German Architect Schnook, The 33<sup>th</sup> Year Of Emperor Guangxu Of The Qing Dynasty, Surveying And Mapping In 1907, Stored In Guangzhou City Archives





### Southern And Northern Dynasties (AD420-589)

At that time, the water was deep and wide. Xi YANG, the Guangzhou governor, and Sidao LIU , a rebel, fought a fierce battle on the water here.

### Song Dynasty (AD960-1279)

A descendant of Confucius migrated and settle there, when the colorful Rainbow Bridge across the wide water above the watercourse, what natives called "long bridge" , which reflects its momentum and the scene of open water.

### Ming and Qing Dynasties (AD1368-1912)

When king of Pingnan, and king of Jingnan, captured Guangzhou, the soldiers who submit to King Pingnan often bathed their horses by the river, hence the name "Sze Maa" means""Washing Horses" in Cantonese, which has been used to this day.

### The Eastern and Western Han Dynasties (BC202-220)

The ship of Lu JIA, a thinker, politician and diplomat of the Western Han Dynasty, sailed down the Pearl River and entered the Zengbu River, landed near the present West Port, and built a mud town on sides, planting lychee and lotus, from which 'Lychee Water Bay' was named, this is also the site of Sze Maa Watercourse.

### Tang Dynasty (AD618-907)

Sediment of The Pearl River scoured into plains, ponds and sloughs abound in every low spot, through densely watercourses, patterns of rural settlements formed. Villagers adapt to the natural conditions to build pond bases where numerous fruit trees and aquatic crops were planted.

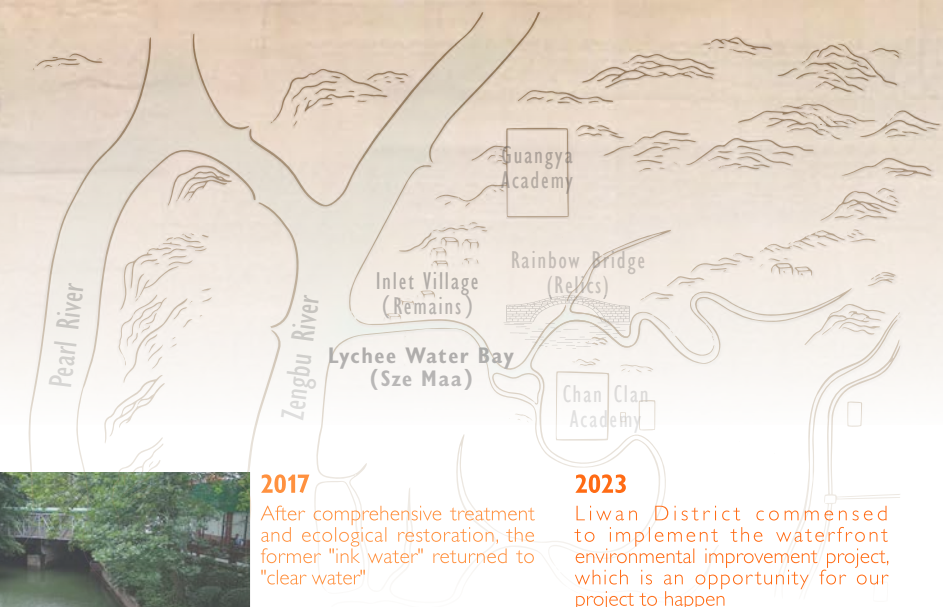
### Yuan Dynasty (AD1271-1368)

Before the Yuan Dynasty, the road into the city running through Rainbow Bridge, The Rainbow Bridge (today's relics) is connected with the avenue into the city.

## TIMELINES & IMPRINTS

Sze Maa once was a natural waterway in west outskirts of ancient Canton. Ponds and sloughs abound in every low spot through waterways, villages resided, villagers planted lychee trees on both sides. 'Liwan' where the site located means 'Lychee Water Bay' in Cantonese, featuring the regional water culture birthplace, where red-cloudy fruit and blooming fragrance overflowing for the time.

In the last three decades, urban sprawl cased waterway shrunk or even disappeared. The radical era of economic expansion has brought huge infrastructure investments, which has caused mishandled relationship between people and environment, witnessed surroundings from prosperity to decline. The life of nearby residents has been greatly affected, which has also become barriers that restrict the high-quality development of urban communities.



### 1970s

There were still fish and shrimp in the water; people can still swim there.

### 1980

The decision makers sacrificed the ecological space of the watercourse, and some of the waterway inlets were covered and hardened to be used as a gathering square for citizens in dense blocks.



### 2017

After comprehensive treatment and ecological restoration, the former "ink water" returned to "clear water".

### 2023

Liwan District commenced to implement the waterfront environmental improvement project, which is an opportunity for our project to happen

### 1960s

The water was still drinkable. Shores were covered with mud and farmland, where cabbages were growing.



### 1978

With urban sprawl, excessive discharge of domestic garbage and sewage, Sze Maa Watercourse has been seriously polluted, and the water has turned black and stinky. Due to the construction of modern high-rise buildings alongside, the splendid natural scenery has been destroyed.



### 2016

Sze Maa Watercourse is listed as one of the first batch of 35 black and smelly waterways in Guangzhou.

### 2019

The government has started to implement the pollution diversion project, and the industrial wastewater in the urban area has been continuously reduced, and the water quality has been basically improved.



# SITE CONTEXT

Running through 1.77-kilometers, as partial remaining 6-7-kilometers ancient waterway, the site carries changes of regional water civilization. Its current waterfront, containing water, covers an area of 65000-square-meters, with average-width of 10 meters.

In 2022, the aging population of Liwan District reached 29.31%, ranking first in the city. There are 4,566 elderly people living alone in Liwan District, accounting for 20.88% of the total number of elderly living alone in 11 districts of the city, accounting for the largest proportion. The site also retains many original old trees, as well as historical sites that once occurred around Sze Maa, retained villages, and records of wisemen and scholars.

length of **1.77km**.

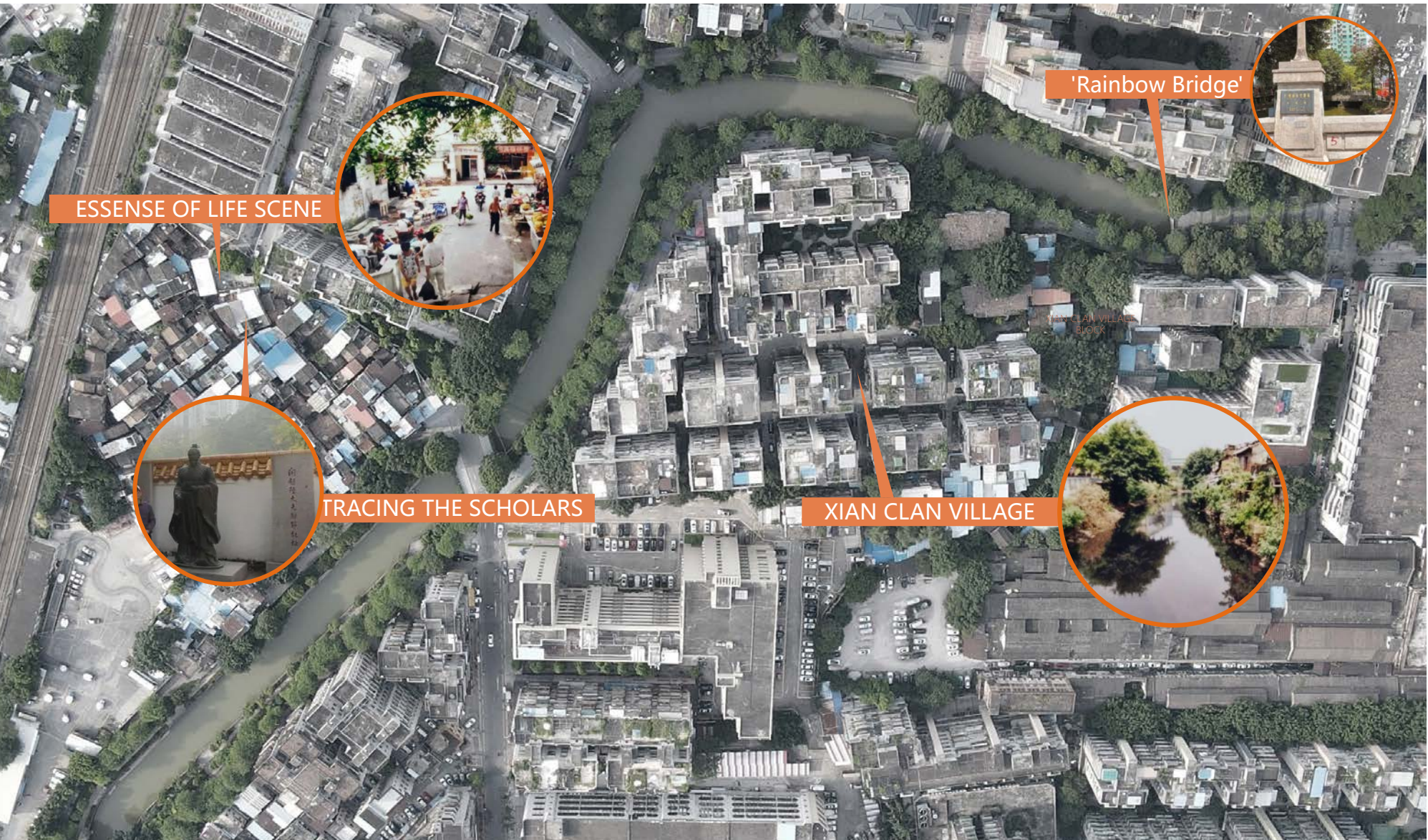
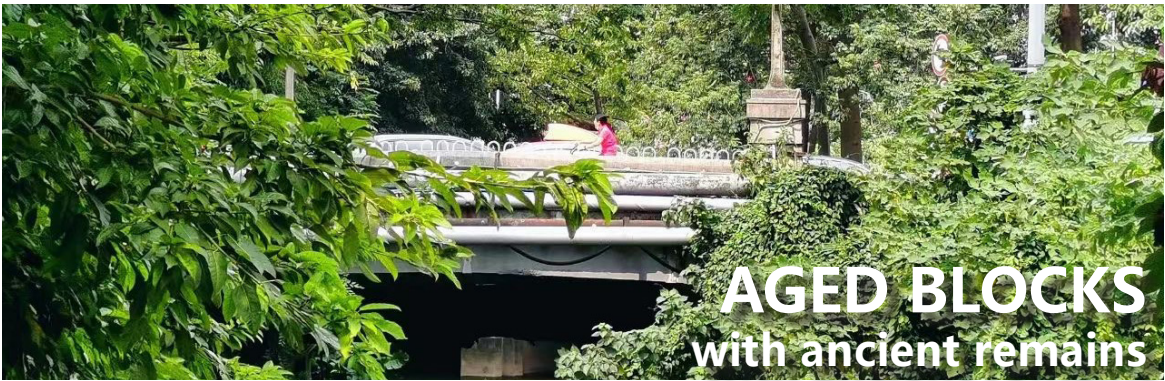
areas of **65000 m<sup>2</sup>**,  
containing water area.

average-width of **10m**.

Liwan District aging population **29.31%**.

**4,566** elderly people living alone,  
accounts for **20.88%** of the elderly living alone

ranked **1<sup>st</sup>** among 11 districts of the city.



- POOR SPAIAL EXPERIENCE few space type, narrow passageway, haphazard paving, poor hydrophilicity
- LACK OF FACILITIES dehumanizing facility, incomplete facilities
- DISORGANIZED INFRASTRUCTURE bare, old and broken facilities, inconsistent style
- PARTIAL WATERLOGGING high side stones prevent rainwater from flowing out and the road from collecting water
- FEATURELESS ELEMENTS Lack of integration and embodiment of cultural elements and regional characteristics



# KEY PROBLEMS

In the last three decades, urban sprawl has caused waterway shrunk or even disappeared. The radical era of economic expansion has brought huge infrastructure investments, which has caused mishandled relationship between people and environment, witnessing the alongside from prosperity to decline. We aims to repair it.

Once water village of well-being has turned into old blocks decay with almost enclosed green land, inaccessible to water transversely, unattractive linear landscape at a glance, no desire for resting and disconnected between site and blocks. It faces not only challenges of scarce public spaces and infrastructures, but also sustainable space utility, lacking culture characteristics, identity, and weak bonding between site and residents within community.



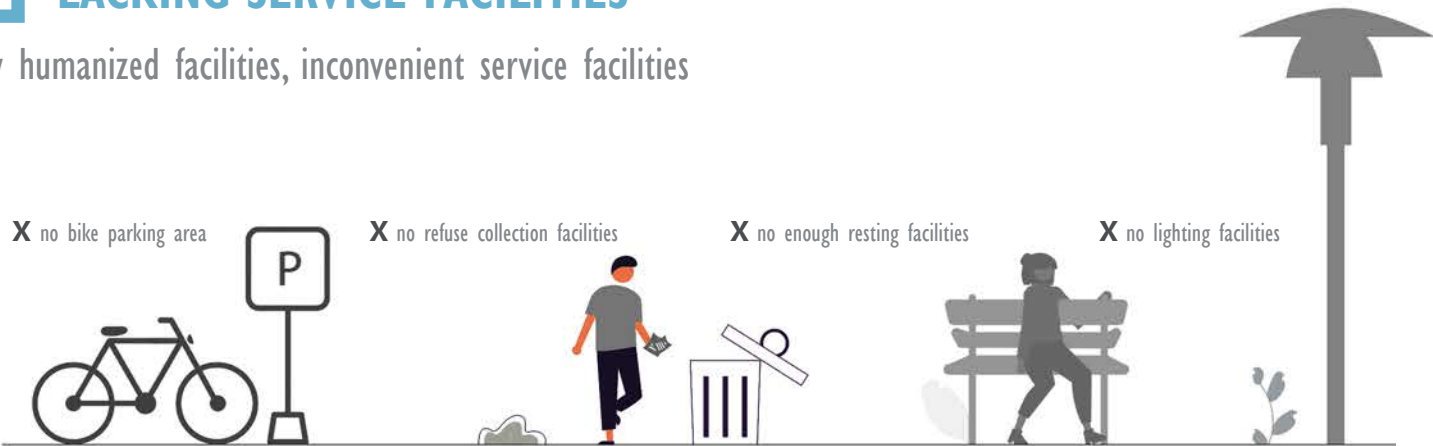
## SCARCE SPACE & INTERFACE

monotonous space type, narrow sidewalk, sundry & messy paving type, Poor hydrophilicity



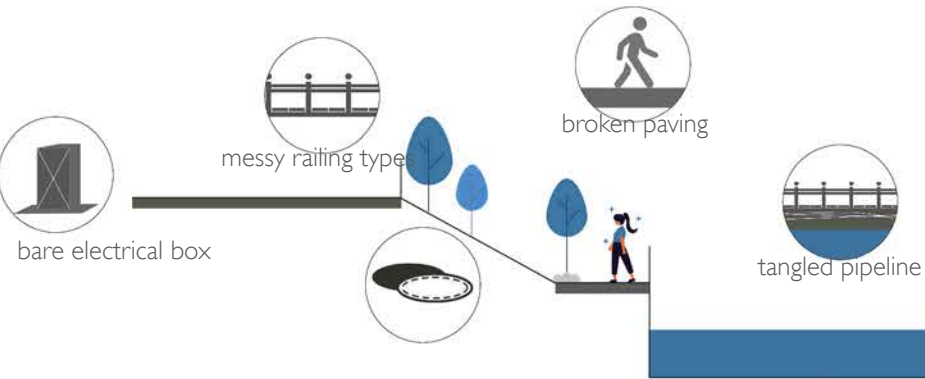
## LACKING SERVICE FACILITIES

few humanized facilities, inconvenient service facilities



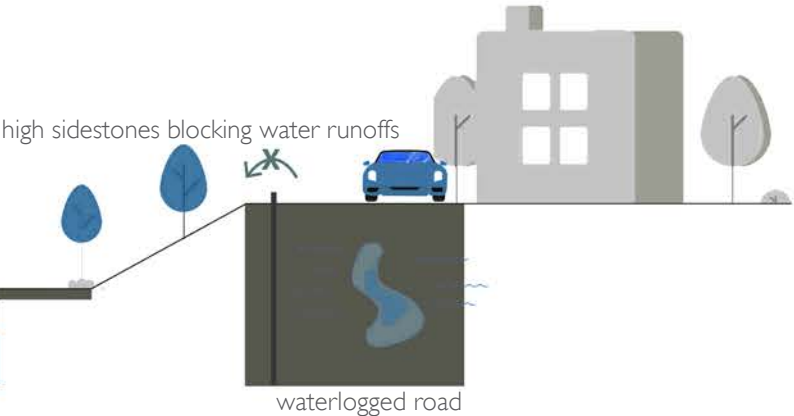
## DISORDER & CRUMBLING INFRASTRUCTURE

exposure facilities, badly damaged, inconsistent style combination



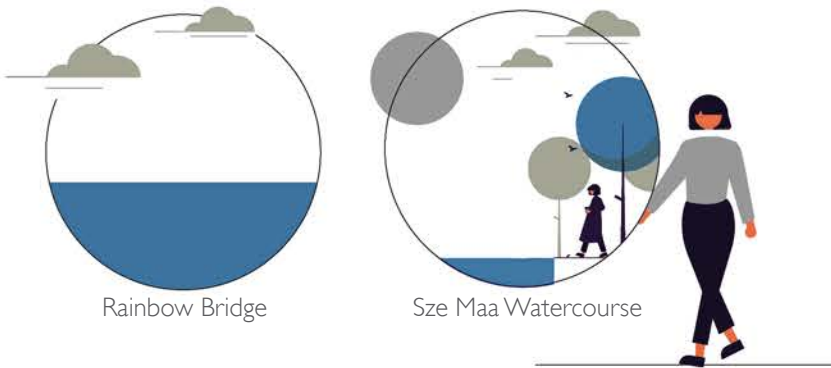
## WATERLOGGING OF PARTIALS

high sidestones blocking rainwater ouflows, waterlogged pavement



## MISSING CULTURE CHARACTERISTICS WEAK CONNECTION OF BLOCKS

lacking cultural elements, no visual imprints infusion presents no attraction & perceptions getting closer to water





# DESIGN STRATEGIES & METHODOLOGIES

## 1 PUBLIC SERVICES

POOR INFRASTRUCTURE & FACILITIES

- ⚠ Scarce Activity Spaces & No Certain Scale Gardens In Neighbours
- ⚠ No Certain Routine Place to Stroll
- ⚠ Lack of Pleasant Infrastructures & Facilities

### CREATE CONVENIENT INFRASTRUCTURES

- 1.1. Connect Continuous Riverine Promenade Loop & Jogging Trail Among Blocks
- 1.2. Embed Sufficient And Lengthened Resting Bench Into Linear & Coherent Landscape
- 1.3. Segmented Green Corridor with Equal Access & Motion Trails & Subtle Acts & Humanized Care Among Blocks



HUMANIZED INFRASTRUCTURES  
FACILITATE  
CONVENIENT LIFE SERVICES

## 2 FAIR SHARING

SCARCE SPATIAL INTERFACE

- ⚠ Humdrum Interfaces: Tedious Water-Facing Scenes & Monotonous Waterside Green Space
- ⚠ Disorder Passage: Mixed & Unlucid Traffic
- ⚠ Onefold Spatial Function: Inflexible & Single Function

### EXPLORE THE SHARED VALUE OF STOCK SPACE

- 2.1. Obey Altitudes, Reshape Interface Length & Breadth, Enrich Cramped Space
- 2.2. Optimize & Compound Passages, Clarify Spatial Order
- 2.3. Compatible Facilities, Balance Spatial Allocation, Enhance Spatial Values, Embrace Space Sharing, Increase frequency of use



SHARED SPACES  
FOSTER  
COMMUNAL DIVERSITY & INCLUSION

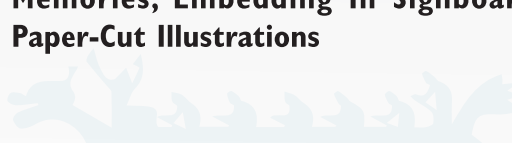
## 3 VENUE CULTURE

MISSING VENUE CULTURE

- ⚠ Fading Life Scenes: Picturesque Residing Water Living Scroll & Its Pro-Nature Context
- ⚠ Missing Native Lifestyle: Gatheing Activities Brought By Riverine Superiority & Flourishing

### REINTERPRET WATER VILLAGE LIVE SCENES & LIFE STYLES

- 3.1. Back To Dream Waterland: open Up Enclosed Greenland, Embed Grass Slope Steps To Embrace Pro-Nature Water Life
- 3.2. Reserve Reminiscent Trees With Blooming & Fruity Fragrance Along 'Lychee Water Bay'
- 3.3. Evocative Shady Old Trees: Remove Cluttered Covers blocking Roots, Highlight Historical Imprints, Social Spaces, & Tree Vitality Blending With New Landscape
- 3.4. Yesterday Once More: Abstract Old Scene Memories, Embedding In Signboards As Paper-Cut Illustrations



CULTURAL REVITALIZATION  
IMPROVES  
COMMUNITY VITALITY

## 4 COMMUNITY RELATIONS

WEAK SOCIAL BONDINGS

- ⚠ Sense Of Alienation & No Identity & Affiliation Of Site Context
- ⚠ Lack Of Popularity & No Longings To Gather & Stay

### ENBRACE COMMUNITY ENGAGEMENT

- 4.1. Offer Sustainable Multi-Possible Education Base Of Landscape Space To Enhance Community Values & Responsibilities
- 4.2. Promote Diverse Fusion, Create Resilient Micro-Activities Spaces To Promote Interactive Fusion, Ease Social Antagonism
- 4.3. Allocate Relations Of Original Trees & Activity Space, Enhance Interaction Between Landscape & Community.
- 4.4. Introduce Community Participation, Encourage Residents' Decision-Makings & Multistakeholders Cooperation To Enhance The communal Autonomy Of Construction & Spatial Discourse Rights.



ENHANCED COMMUNITY PARTICIPATION  
PROMOTES  
COHESION & SOCIAL BONDINGS

REJUVENATE THE ANCIENT WATERY LIFE SCENES OF COMMUNITY WELL-BEINGS:  
CREATE MULTI-CULTURAL & LIFE SHARING PROMENADE FOR COMMUNITY HEALTH



# SITE PLAN

The entire renewal size maa promenade is continuously connected to form a 3.54 Km walking loop and a 2.72 Km running track, and the waterfront will connect the social spaces of the old and new streets and blocks, transforming the waterfront into a greenery corridors of life sharing.

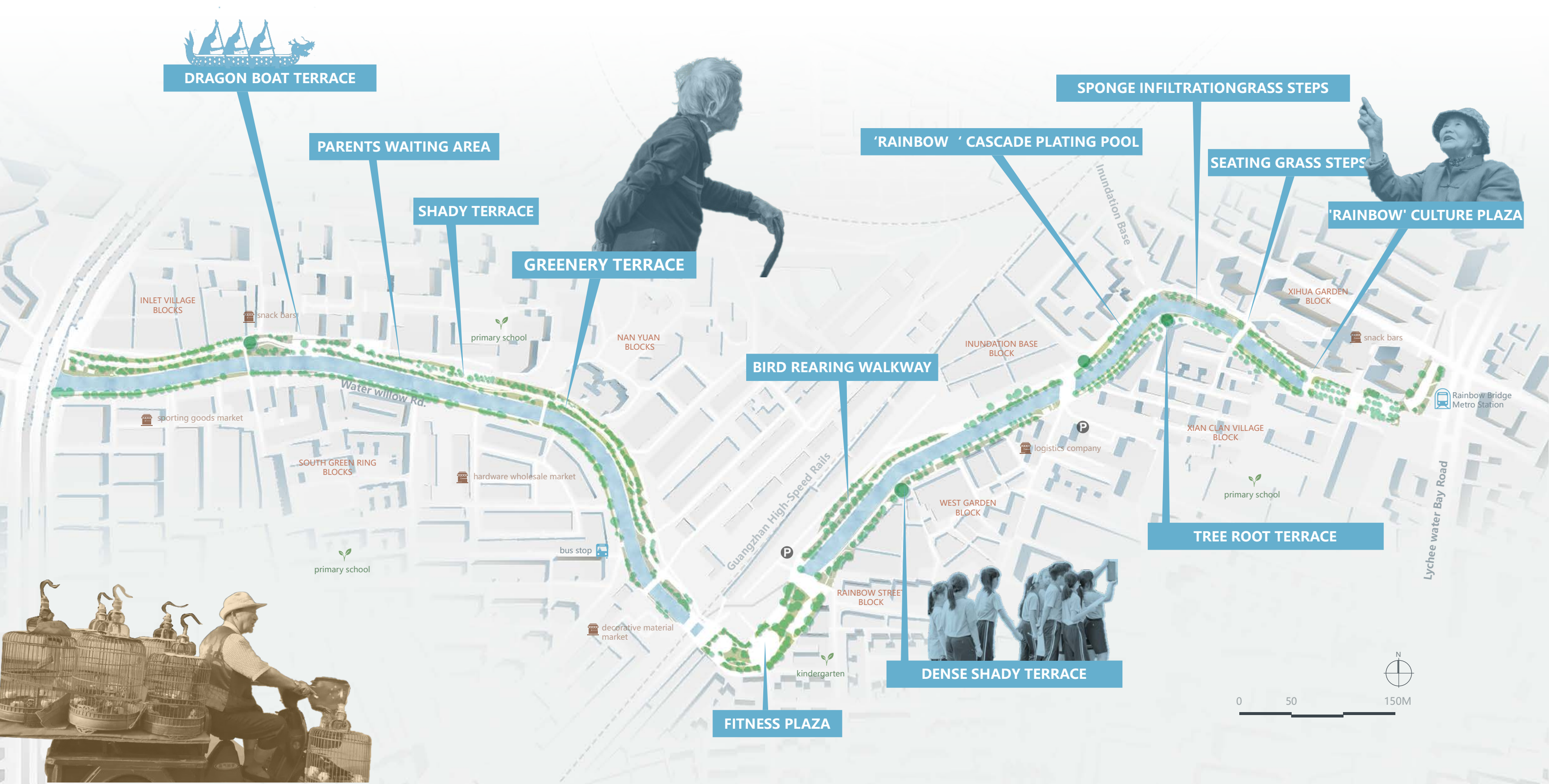
Design has renewed Inlet Village Platform, Dragon Boat Platform, Tree Root Platform, Shady Platform, Bird Rearing Platform, Banyan Platform, Rainbow Terrace Planting Pond, Sponge Infiltration Grass Steps Space, Grass Steps Platform and Rainbow Cultural Plaza to embrace resilient multi communal activities spaces for community as possible, which facilitates communal interactions of residents, social bonding and reduce blocks division and antagonism, then promote cultural diversity of site and community.

Revitalize Waterfront Space Area **23221 m<sup>2</sup>.**

Run Through Jogging Trails **2.72 km.**

Renew Walkway Loop **3.54 km.**

Embed Continuous Strip Seating **1980m.**





# STRATEGY I: CREATE CONVENIENT INFRASTRUCTURES

- 1.1 • Connect Continuous Riverine Promenade Loop & Jogging Trail Among Blocks

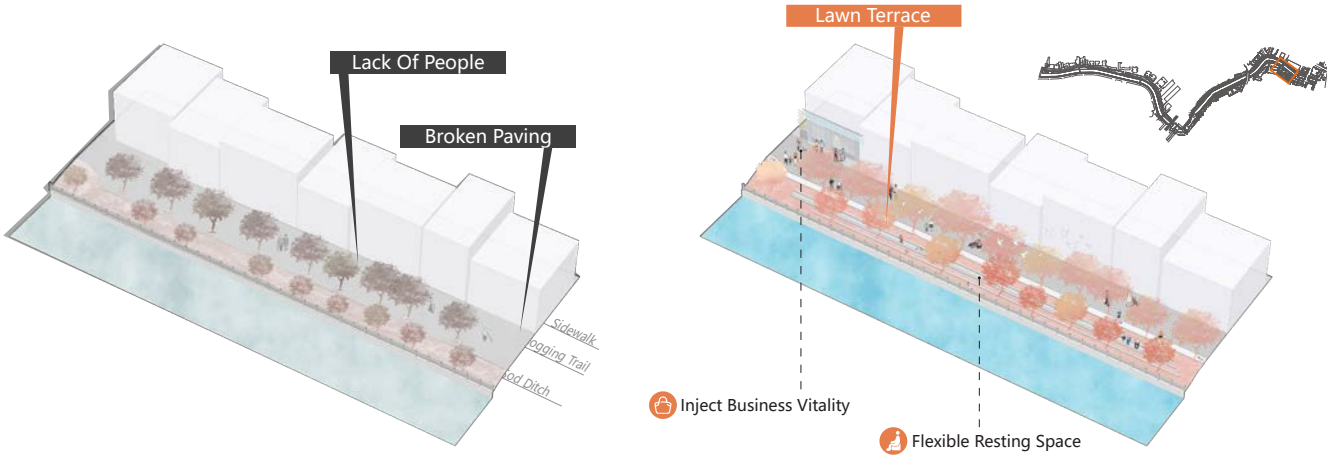


- 1.2 • Embed Sufficient And Lengthened Resting Bench Into Linear & Coherent Landscape



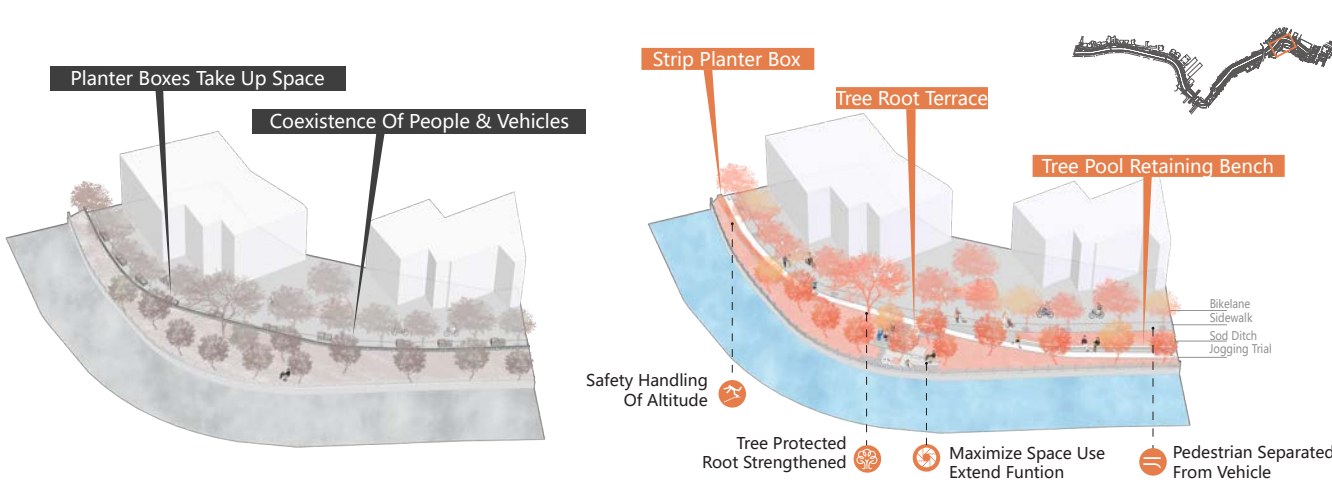
# STRATEGY I: CREATE CONVENIENT INFRASTRUCTURES

## 1.3 Segmented Green Corridor With Equal Access & Clarified Traffic flowlines & Subtle Acts Concerns & Humanized Care Among Blocks



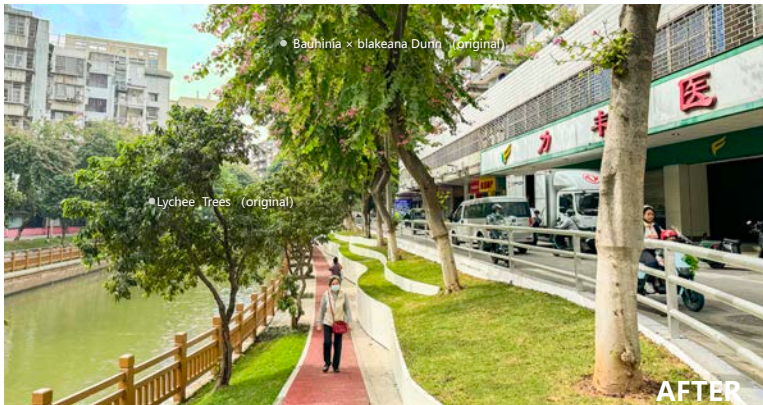
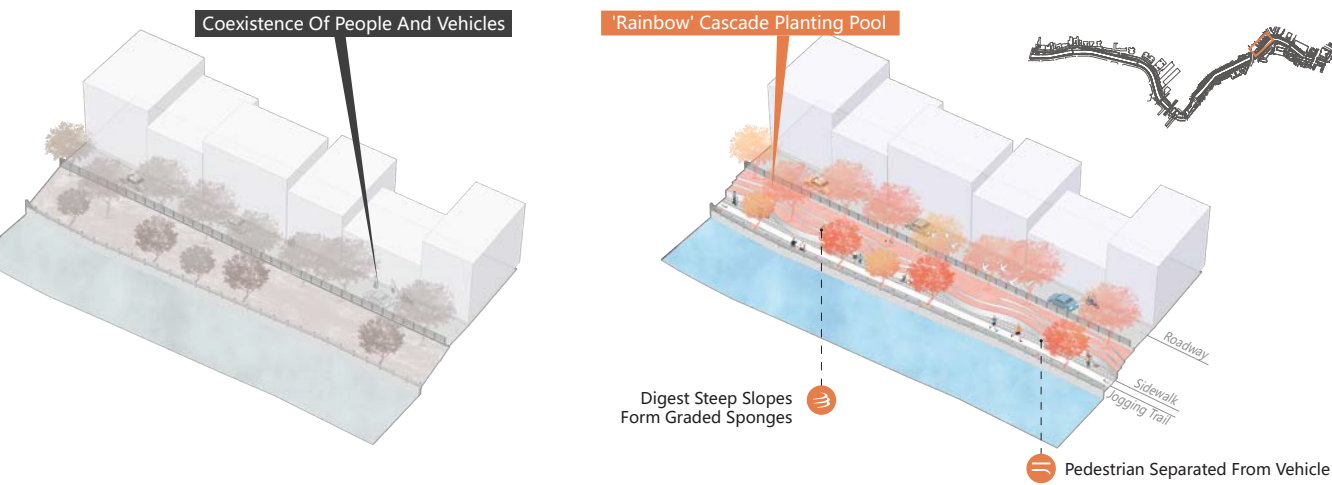
TYPICAL SEGMENTED DESIGN CONTRAST 1:

The high sidestones along the road are removed, and the gentle linear steps are embedded in the grass slope to penetrate the surface runoff serving as a rest bench and a micro-activity space, gradually differentiate activity trajectories.



TYPICAL SEGMENTED DESIGN CONTRAST 2:

Flower boxes that blocked people's access to the water were cleared, leaving room for a clear distinction between walking and jogging paths.



TYPICAL SEGMENTED DESIGN CONTRAST 3:

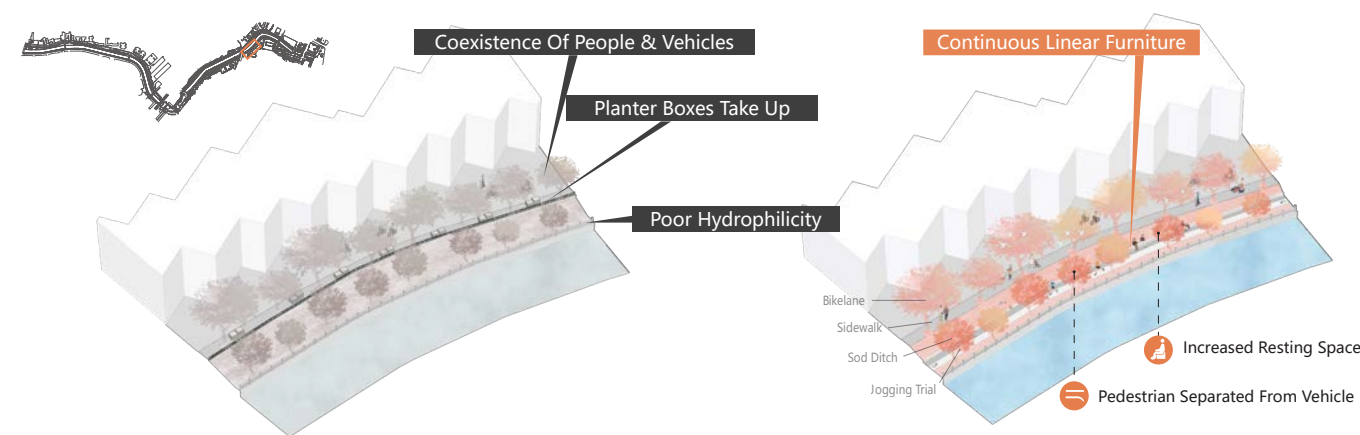
Pedestrian and vehicle traffic are divided, and the steep closed bushes are replaced by terraced planting ponds. The line of sight to the waterfront is opened, enriching the interface between the block and the waterfront and the interest of stepping into it.



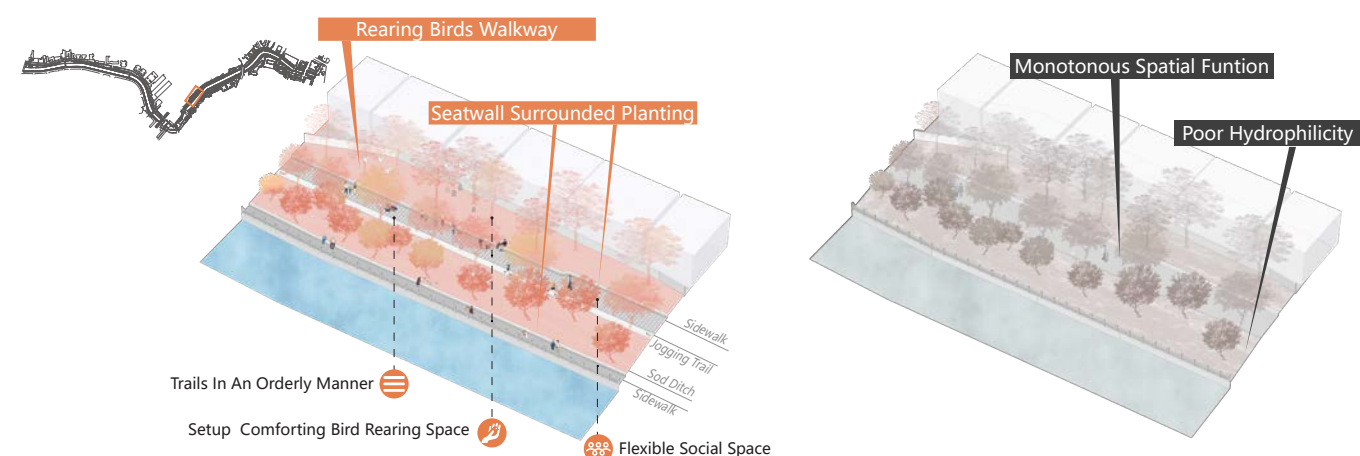
# STRATEGY I: CREATE CONVENIENT INFRASTRUCTURES

## 1.3. Segmented Green Corridor With Equal Access & Clarified Traffic flowlines & Subtle Acts Concerns & Humanized Care Among Blocks

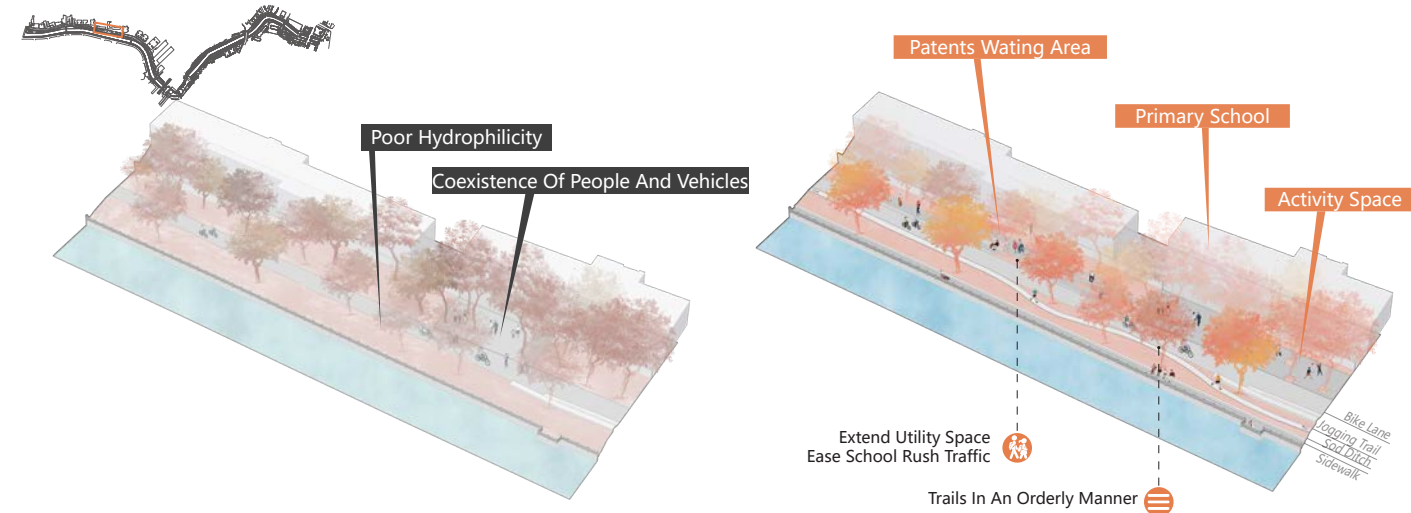
TYPICAL SEGMENTED DESIGN CONTRAST 4:



TYPICAL SEGMENTED DESIGN CONTRAST 5:



TYPICAL SEGMENTED DESIGN CONTRAST 6:



The addition of continuous stone benches plays a role in retaining the soil, restricting the space to define the new rest space, and is also a very convenient urban furniture, residents can enjoy and rest as they go through.



The orderly hierarchical design of the road enriches the level of the cramped space, and the locally enlarged linear space becomes a new activity corridor space, allowing more interesting community character activities to merge and collide.



The closed and inaccessible ground space is cleared, forming a flexible activity tree-array space, and the traffic mixed with people and vehicles is clarified, making the entrance space of the community primary school safer, and leaving a variety of possible Spaces for parents to stay and wait for gathering and chatting.



## STRATEGY 2: EXPLORE THE SHARED VALUE OF STOCK SPACE

### 2.1

#### • Adjustment Height Difference, Reshape Interface Length & Breadth, Enrich Cramped Space

The design adapts to the height difference, reconstruct the boundary space length and breadth, activates entry access, strip interface, and optimizes and maximally enriches limit space. Besides, design makes facilities compatible, increase frequency of use, balance spatial allocation, enhance spatial value and embrace space sharing. There are two typical integration of interface with certain height difference. One is to implant multi-layers grass steps with low intervention in the enclosed grass slop, while retaining spatial value of ecological benefits, placing urban furniture that interacts with trees and faces water to get closer to residents.

The other is to enrich the steep grass slope, to form a stepped wavy flow line step planting pond, which appropriately satisfies the growth space of the native trees, leaving the viewing points, and its shape of streamline is flexible and resilient to spatial avoidance, to stay rather than merely walk through.



## STRATEGY 2: EXPLORE THE SHARED VALUE OF STOCK SPACE

### 2.2 • Optimize & Compound Passages, Clarify Spatial Order

Compatible Traffic Spaces Has Reshaped The Spatial Orders, Allowing Residents Who Stroll, Jog, Gather In The Gradient Space To Act.



### 2.3 • Compatible Facilities, Balance Spatial Allocation, Enhance Spatial Values, Embrace Space Sharing, Increase Frequency Of Use

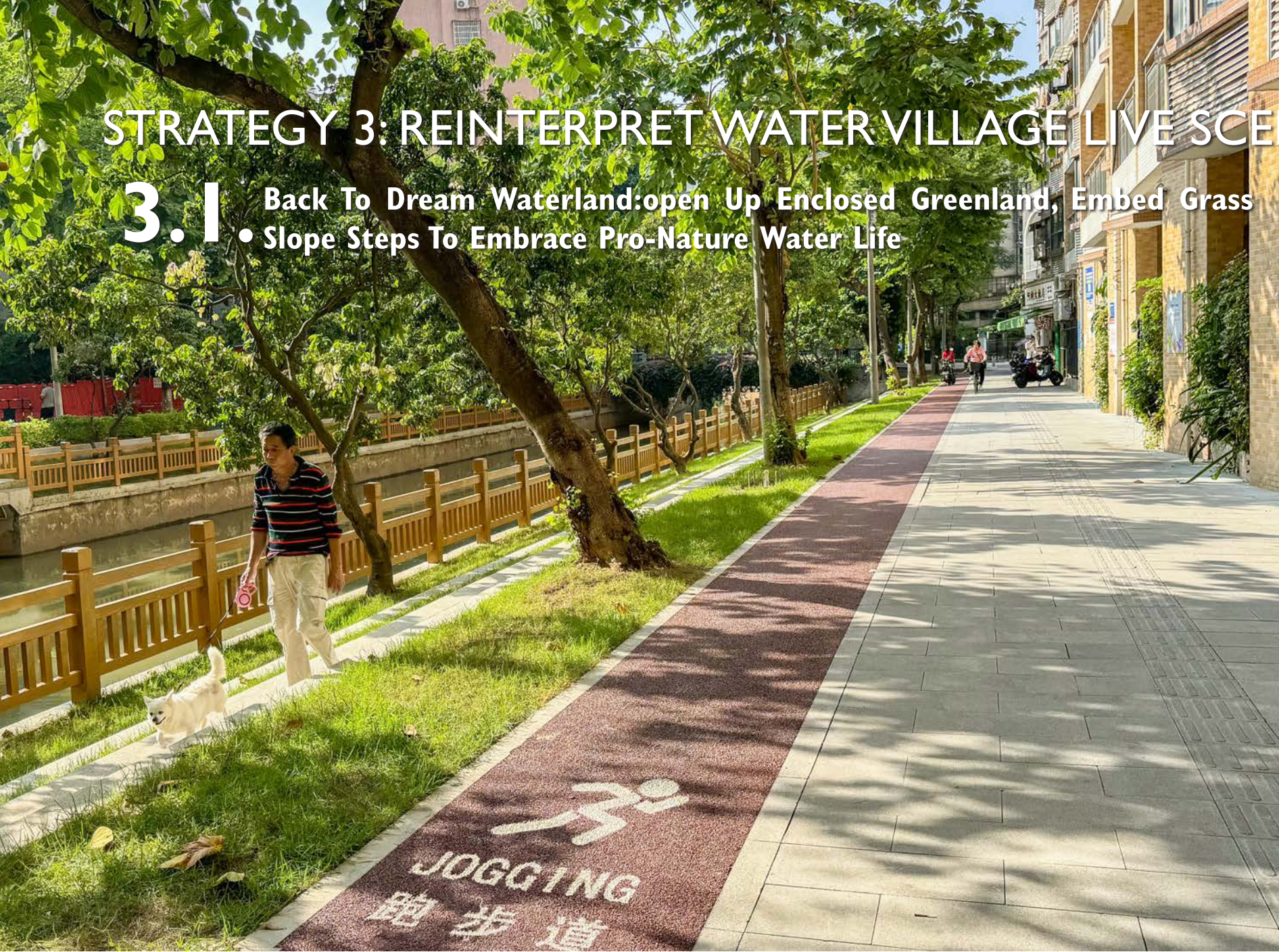
Design makes facilities compatible, increase frequency of use, balance spatial allocation, enhance spatial value and embrace space sharing.



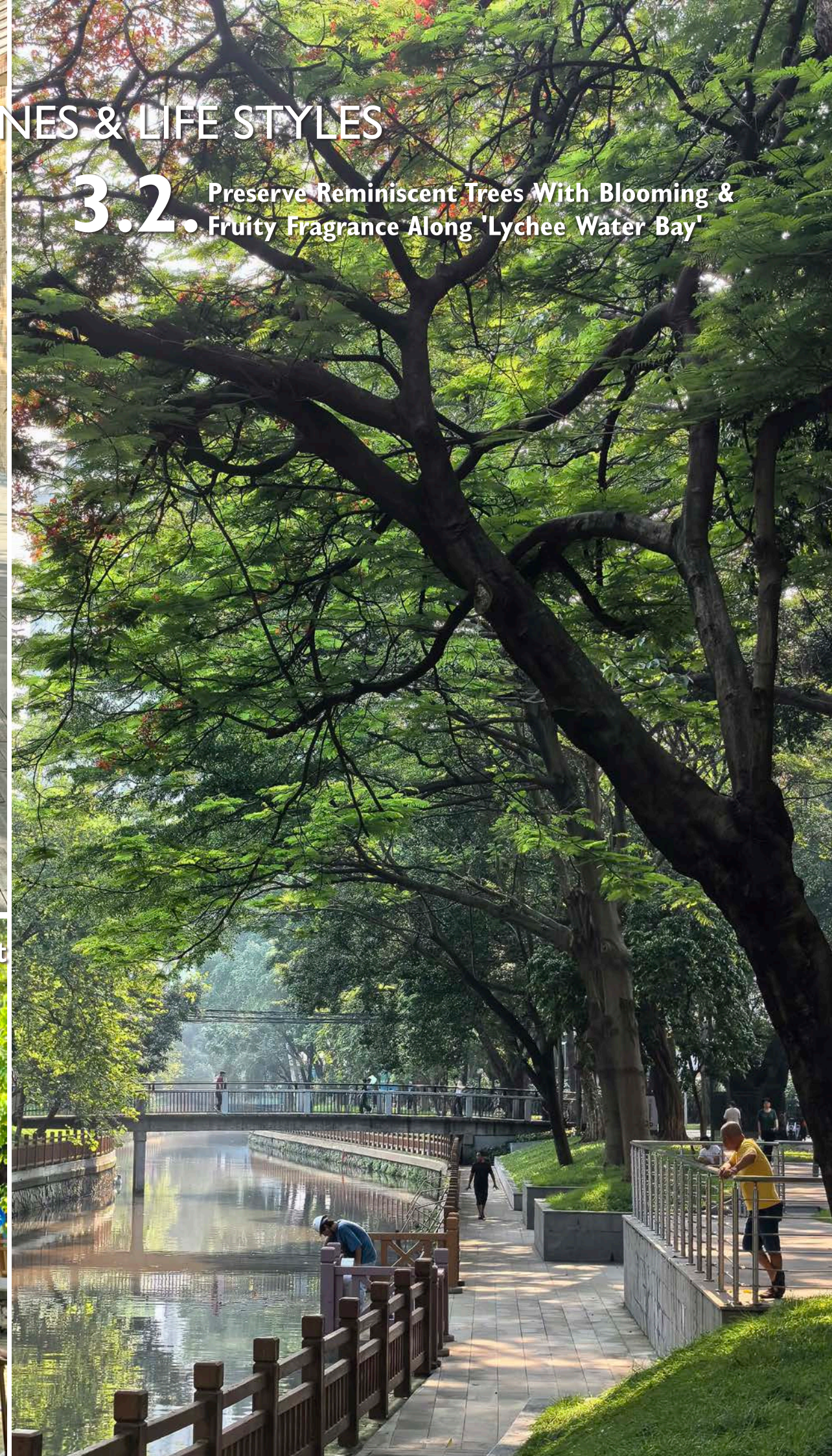


## STRATEGY 3: REINTERPRET WATER VILLAGE LIVE SCENES & LIFE STYLES

### 3.1 Back To Dream Waterland: open Up Enclosed Greenland, Embed Grass • Slope Steps To Embrace Pro-Nature Water Life



### 3.2 Preserve Reminiscent Trees With Blooming & Fruity Fragrance Along 'Lychee Water Bay'

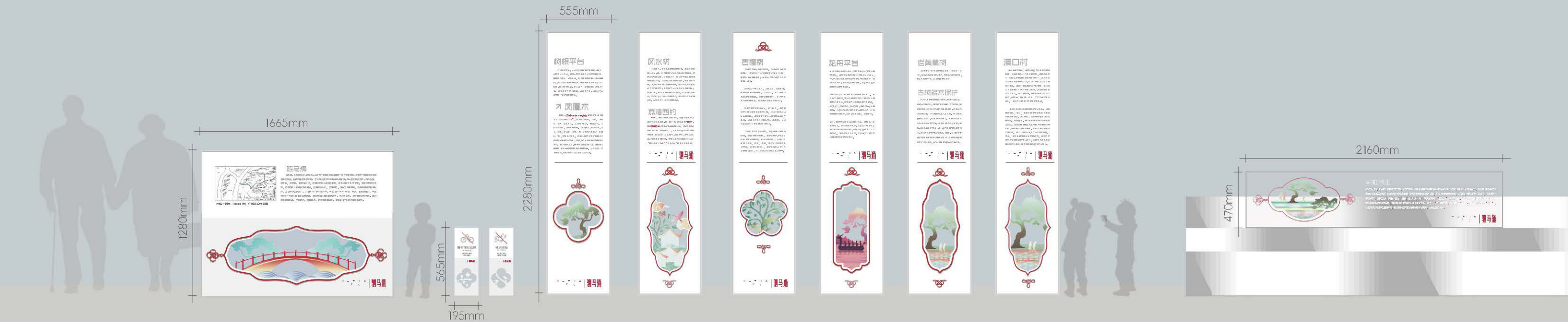


### 3.3 Evocative Shady Old Trees: Remove Cluttered Covers blocking Roots, Highlight Historical Imprints, Social Spaces, & Tree Vitality Blending With New Landscape





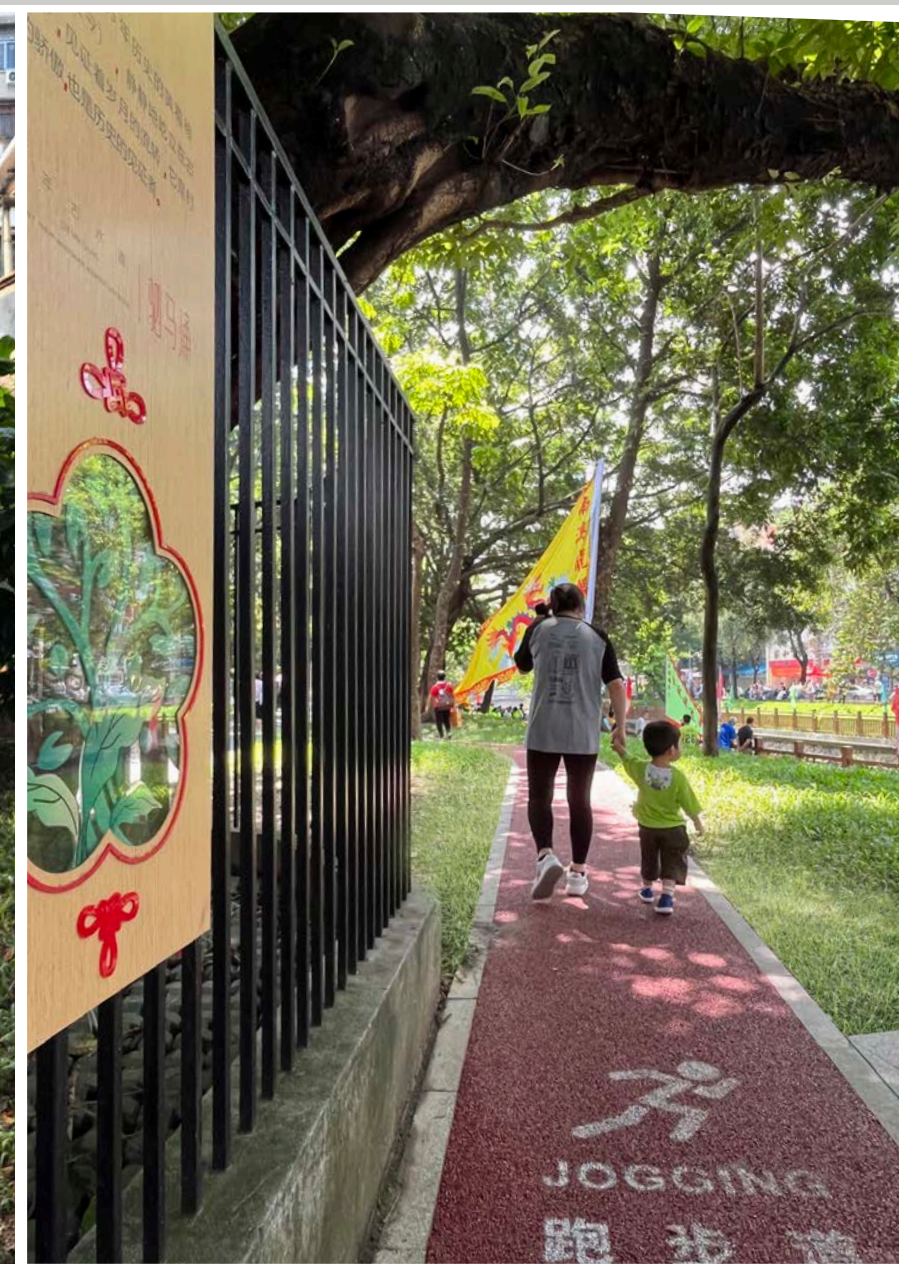
# STRATEGY 3: REINTERPRET WATER VILLAGE LIVE SCENES & LIFE STYLES



## 3.4 Yesterday Once More: Abstract Old Scene Memories, Embedding In Signboards As Paper-Cut Illustrations



Elements of the rainbow bridge and the alongside fragrant trees, inlet village and native century-old trees.





# STRATEGY 4: ENBRACE COMMUNITY ENGAGEMENT

## 4.1 • Offer Sustainable Multi-Possible Education Base Of Landscape Space To Enhance Community Values & Responsibilities

▲ The site has become a sustainable and important water activities and water education heritage base, with participants: water experts from the District Water Conservancy Bureau, Rainbow Street Office, Urban Social Work Service Center, Sze Maa Volunteer Service Team, Rainbow Street City Environmental Health Station, Urban New Life Environmental Protection Promotion Association, Water Resources Research Institute, and community school students.

## 4.2 • Promote Diverse Fusion, Create Resilient Micro-Activities Spaces To Promote Interactive Fusion, Ease Social Antagonism

▼ ▲ The linear waterfront microspace can be a micro-classroom for inspiring residents or a place for teasing pet birds that elderly people yearn for every day.





# STRATEGY 4: ENBRACE COMMUNITY ENGAGEMENT

## 4.3 • Allocate Relations Of Original Trees & Activity Space, Enhance Interactiona Between Landscape & Community.

Fully based on the existing good forest and water foundation, the designer rationally distributes the balanced relationship between ecological interest space and human activity space; highlights and strengthens the use space of various groups and the growth space of native trees, and enhances the relationship between landscape and community human and nature.

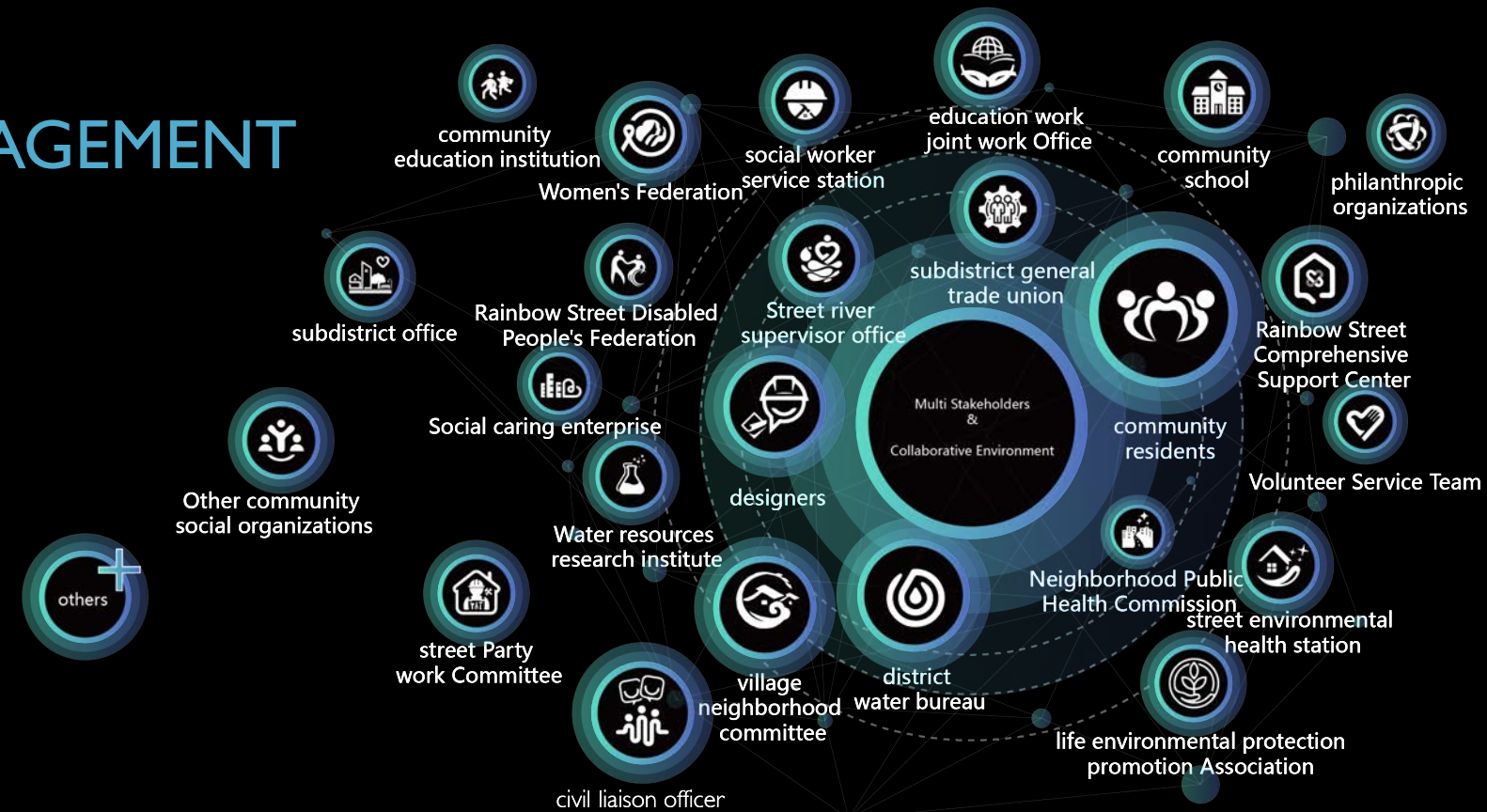




# STRATEGY 4: ENBRACE COMMUNITY ENGAGEMENT

## 4.4. Introduce Community Participation, Encourage Residents' Decision-Makings & Multistakeholders Cooperation To Enhance The communal Autonomy Of Construction & Spacial Discourse Rights.

the project organizes and encourages community participation of resident's decision-making meetings, open forums, workshops, etc., and embrace multi-stakeholders through process, including water-related enterprises, governments, social organizations, caring enterprises, scientific research and education organizations, environmental protection and health organizations, and other social welfare organizations. It enhances the autonomy and rights to speak of constructing and protecting community environment. In long term, residents as parts of it achieves sense of belonging, communal responsibilities and social cohesion.



Residents' decision-making meeting about design scheme of phased objectives.



Designers, experts and construction workers are on site to discuss follow-up issues after completion.



Stakeholder representatives holding project meetings after regular site status survey.



Volunteers from the water department were on site to solicit public opinions



Civil Liaison Officer & Volunteers were on site to solicit public opinions.



The designer regularly presents and explains the Sze Maa Promenade renewal strategy, concept, and community construction concept to the public at the venue, so that the shared design is known by more residents within the Rainbow Community.







CONVENIENT LIFE SERVICES

TO CHASE



TO STROLL



TO SEE



TO RUN




TO PLAY & SOCIALIZE ...

HUMANIZED INFRASTRUCTURES  
FACILITATE CONVENIENT LIFE SERVICES




# COMMUNITY DIVERSITY & INCLUSION OF LIFE SHARING



On the eve of the Dragon Boat Festival, villagers gather at the renewal dragon boat platform to cheer for the village dragon fleet, celebrate and record the annual festival of worshipping the dragon ancestor and praying for good luck and warding off evil spirits. Residents along the road reflected that at this time last year, people in the village could not get close to the water to watch the dragon boat races as they do now, and when the green space was closed, there were not so many places to stop along the Sze Maa Watercourse, "what a change!" they said, with joy and satisfaction.

**SHARED SPACES**  
**FOSTER DIVERSITY & INCLUSION**



In the village of Inlet, which is as old as the earliest waterside settlement in Sze Maa watercourse, villagers gather on the renovated Inlet Village micro-space platform, where a number of activities are being held, including a seminar on the revitalization of beautiful countryside, a small painting exhibition of the community primary school depicting the beautiful countryside, and a booth of community volunteers to instruct dragon boat culture to residents. And guide the villagers to participate in the village's traditional dinner activities. The shared space promotes imperceptibly promotes diversified infusion and community interaction. The barrier between people is opened, and the space rich in energy field is awakened.





# COMMUNITY VITALITY

The preserved flower trees and fruit trees, the outstanding vitality of the ancient trees, and the intentionally amplified micro-activity space integrated into the nature provide a convenient community hydrophile interface conducive to cultural transmission, a coherent and rich hierarchical community flowlines, and the revival of the water village life scenes of gathering along the renewal promenade. The ancient water village culture is returning in a new collision way. Residents who might not otherwise have crossed paths meet here



**CULTURAL REVITALIZATION  
IMPROVES VITALITY**



# COMMUNAL MULTI-CULTURE AND LIFE SHARING



Sze Maa used to be a natural waterway in the outskirts of ancient Canton, where picturesque scenes of red fruits, green trees, bridges and flowing water with boats and ships sailing, businessmen drinking tea by the window, rich merchants enjoying splendid view on its front attic garden, dogs barking, feet clogging, peddlers yelling, punters smiling to greet, rafters selling livelihood Sampan Congee under the bridge, the farmers' market is bustling.

Although the present Sze Maa no longer has function of shipping, the renovated promenade strip belt plays a role in optimizing urban water conservancy, improving ecological livable environment of the area, enhancing community co-construction, enhancing cultural recognition, community values, and inheriting regional water culture. Today Sze Maa Promenade is a place where community yearns for daily, carrying the healthy, inclusive and life sharing community of education, natural aesthetics, study and reminiscent history alongside the waterway.



Sze Maa Alongside Tree Awareness Coursework



# COMMUNAL MULTI-CULTURE AND LIFE SHARING PROMENADE

Water conservancy related enterprises, government agencies, community social organizations, caring enterprises, scientific research and education organizations, environmental protection and health organizations and other social welfare organizations actively participate in the community activities on the renewal site. This strengthens the autonomy and self-voice of the construction and protection of the community environment.

# 46 +

## DIVERSIFIED & MORE

TYPES OF ACTIVITY



This is the easternmost point of our project, the entrance of the Rainbow Bridge into the site. Under the building, the breakfast shop share the outside terea with the waterfront section, residents passing by here would like to have a bowl of sampan congee that was unique to the boatman's family at the edge of the Lychee Water Bay, where our site located. Passersby of blocks and the welcome neighborhood brisket snack bar in the arcade along the road. The renovation filled with the smell of beef brisket, makeshift lights and chatter. The old town is in the vibrant essence of life again.

