

The image shows a scenic landscape of Yanqi Lake. In the foreground, there is a wooden railing with vertical slats, suggesting a viewing platform or walkway. The lake is calm and blue, surrounded by lush green trees and vegetation. In the background, there are large, rugged mountains under a clear blue sky. The overall scene is peaceful and natural.

THE INFRASTRUCTURE CONSTRUCTION PROJECT OF PUBLIC TOURISM IN YANQI LAKE ECOLOGICAL DEVELOPMENT DEMONSTRATION ZONE IN BEIJING

■ Project Statement

The project plot is located on the west and north sides of Yanqi Lake, Huairou District, Beijing. The mountain twists and turns, excellent view, overlooking the panoramic Yanqi Lake. The project scale is about 15 hectares. The purpose of the project is to provide an infrastructure for people to climb mountains and view the scenery of Yanqi Lake, which is in line with the existing sightseeing service facilities of Yanqi Lake and in line with the overall planning of Yanqi Lake ecological development Demonstration area. The project improves the functional structure of the area and provides Beijing residents with a good place to visit on weekends. Yanqi Lake ecological Development Demonstration Zone is rich in ecological resources. In the construction, ecological protection should be strengthened to build a Beijing-efficiency ecological tourism demonstration zone.

■ Project Narrative and Contents

Background

The project is located in Yanqi Lake Ecological Development Demonstration Zone of Huairou District. The project is located within the 60-minute traffic circle of Beijing, and the traffic is very convenient. The mountains where the hiking trail is located include Hongluo Mountain in the west and Jundu Mountain in the northwest. The two mountains are adjacent to Yanqi Lake, with a wide vision and good viewing effect. There is a current ditch along Red Snail Hill. It's perfect for hiking trails.

Design Features

The landscape experience of the hiking trail is dominated by ecological nature. As far as possible, local rubble and natural wood are selected, and important natural landscape stones along the way are retained and borrowed. Viewing nodes are arranged in the position of good view and excellent scenery. The rest nodes are mainly arranged in well-shaded and flat terrain. The design combines the needs of people, and arranges corridor, pavilion and other facilities under the premise of disturbing the current natural mountain as little as possible. And combined with the retaining wall layout appropriate amount of seats.

- **Intervene less and borrow more**

Using the current abandoned ditch foundation, build wooden trestle road. Make use of the current situation, save cost and facilitate construction.

- **Hidden in the mountains**

The present mountain has a large number of green planting. The design hides the trail in the forest while reasonably avoiding the current planting.

- **Follow the direction of the mountain**

The current mountain terrain is more tortuous. Design to follow the contour line, reasonable layout of hiking trails.

- **Set the platform according to the visual field**

According to the current mountain shape, select the area with a wider vision and flat terrain to build the viewing and rest platform to form a good viewing effect.

Technical essentials

- **Respect nature**

The principle of route selection insists on reducing the interference with nature and concealing the trail in the forest. The design adheres to the natural ecology, minimizes the damage to the mountain, and forms a hiking trail system compatible with the current mountain and surrounding landscape.

- **Thematic conception**

The theme of the project is to talk to wild geese in the mountains. The whole line winding along the mountainside layout, like the brow of the mountain general, full of poetic feeling.

- **Channel utilization**

The present natural condition of the mountain is good. At the top of the hill is an aqueduct, built in the 1970s and now abandoned. Route selection is based on the aqueduct and combined with the aqueduct for historical and cultural display.

- **Elevation analysis**

The vertical elevation difference of climbing route fluctuates greatly. The vertical variation range of the western mountain road is 92-251 meters above sea level. The vertical variation range of the northwest mountain road is 93-253 meters above sea level. The route selection of hiking trails should avoid steep areas. Considering the viewing effect, the area with a slope of 20-40° is the most suitable for trail construction. Landscape nodes should be arranged between 200 and 300 meters.

- **Traffic organization**

Project transportation organization on the premise of safety, according to the mountain trend, as far as possible to achieve convenient and easy. There are as many as 13 entrances and exits for people of different ages and different needs to choose sightseeing routes. Formed a free and optional more traffic streamline system.

- **Planting design**

Plant cultivation mainly depends on replenishment and repair. Repair disturbed vegetation along the trail route, using plants that are already on the mountain. At the same time, according to the direction of the line, the color leaf trees are planted to form the mountain color leaf tree landscape. Create a good mountain planting habitat.

SITE ANALYSIS

The project is located in Yanqi Lake Ecological Development Demonstration Zone of Huairou District. The project is located within the 60-minute traffic circle of Beijing, and the traffic is very convenient.

The mountains where the hiking trail is located include Hongluo Mountain in the west and Jundu Mountain in the northwest. The two mountains are adjacent to Yanqi Lake, with a wide vision and good viewing effect. There is a current ditch along Red Snail Hill. It's perfect for hiking trails.



Jundu Mountain
(328m above sea level)

Hongluo Mountain
(273m above sea level)

Xiangyang Channel

Ancient Locust Tree Park

Beijing Aerospace Training Center

Peacekeeping Center

Visitor Center

Dream of Red Mansions
Ancient Capital Cultural Park

Yanqi Island

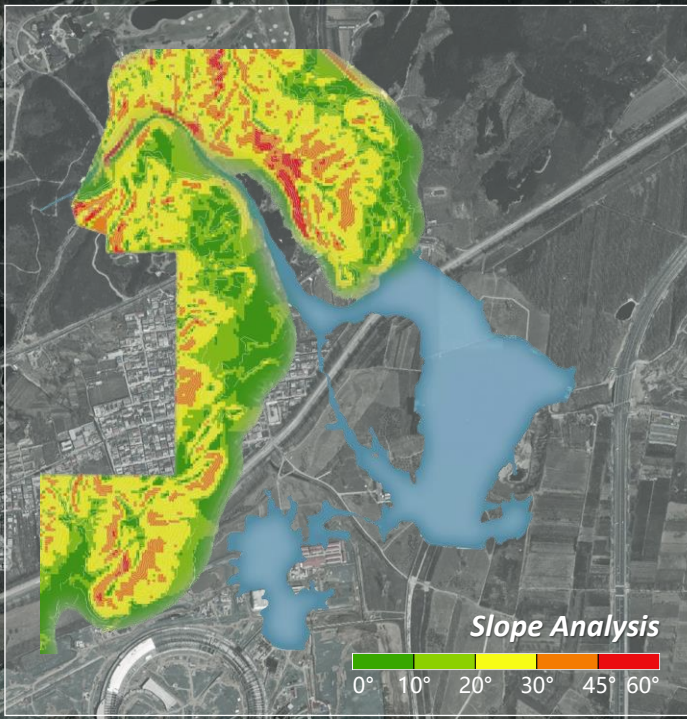
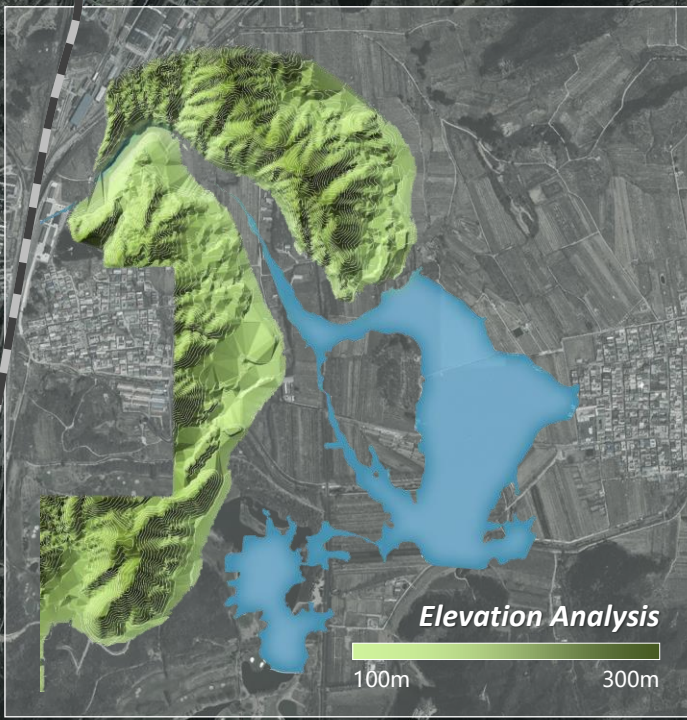
Yanqi Lake
(water level 84m)

Sunrise Kempinski Hotel

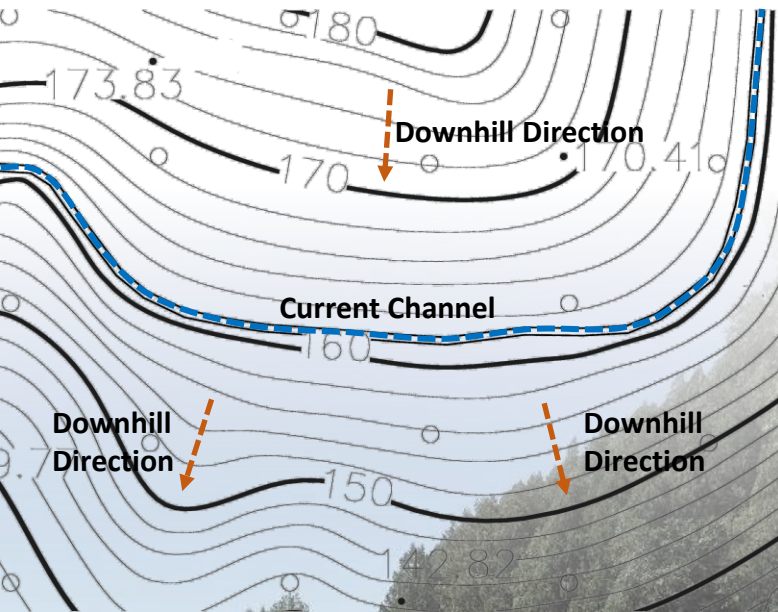
Yanqi Lake West Road

Jingjia Road

Jingjia Road

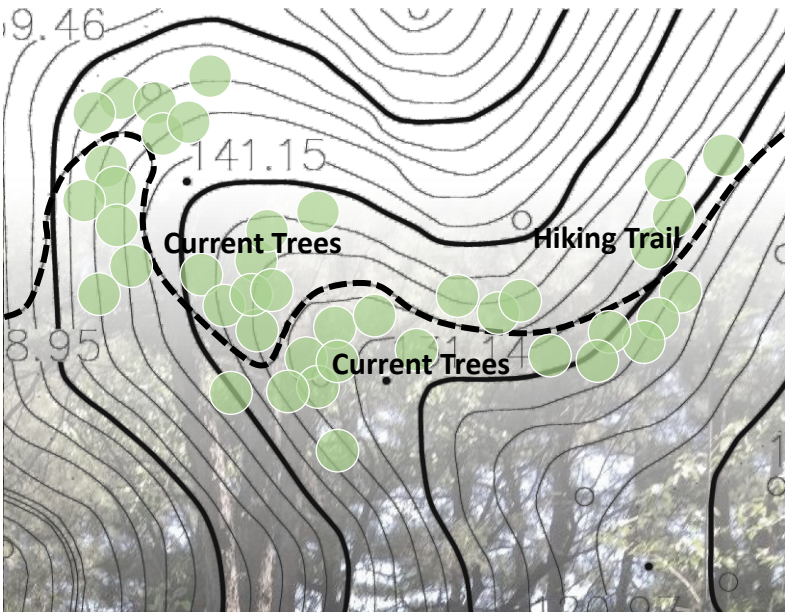


STRATEGY



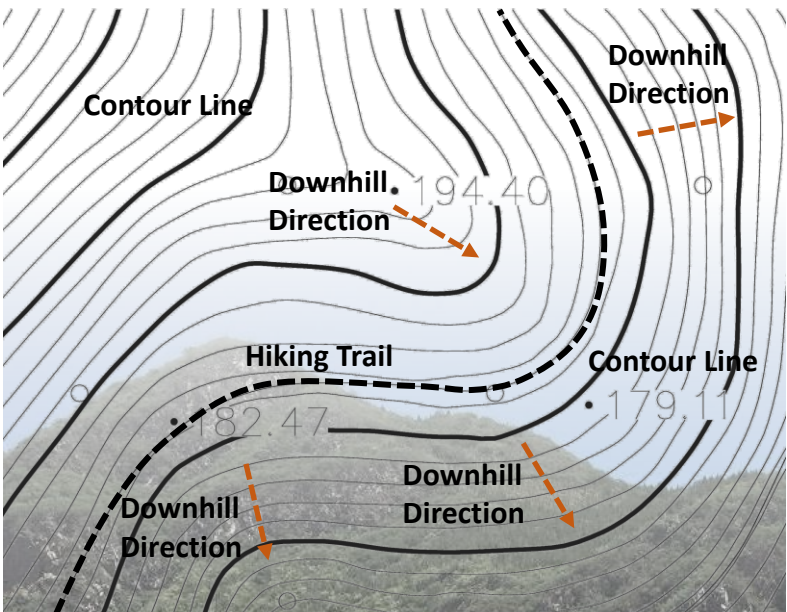
Intervene Less and Borrow More

Using the current abandoned ditch foundation, build wooden trestle road. Make use of the current situation, save cost and facilitate construction.



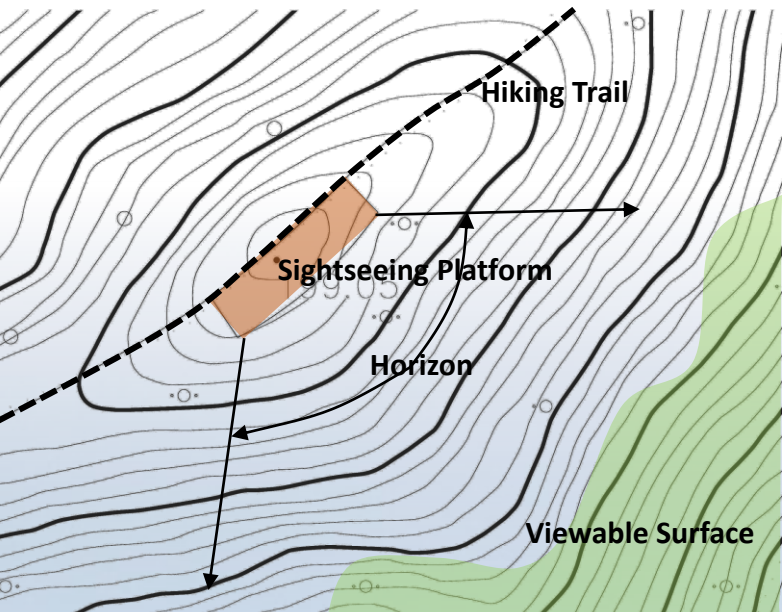
Hidden in the Mountains

The present mountain has a large number of green planting. The design hides the trail in the forest while reasonably avoiding the current planting.



Follow the Direction of the Mountain

The current mountain terrain is more tortuous. Design to follow the contour line, reasonable layout of hiking trails.



Set the Platform According to the Visual Field

According to the current mountain shape, select the area with a wider vision and flat terrain to build the viewing and rest platform to form a good viewing effect.

MASTER PLAN

The project scale is about 15 hectares. The design is compatible with the existing sightseeing service facilities of Yanqi Lake and the overall planning of Yanqi Lake ecological development Demonstration area. The project provides Beijing residents with a good place to visit on weekends. Yanqi Lake gets its name as the place where wild geese migrate. The designed hiking trail is an important part of the tour route around Yanqi Lake. The design extracts the migration process of wild geese as the design core throughout the whole route.





OVERALL EFFECT

The landscape experience of the hiking trail is dominated by ecological nature. As far as possible, local rubble and natural wood are selected, and important natural landscape stones along the way are retained and borrowed.

ROUTE ANALYSIS

According to the current situation of the natural mountain, the project designed three kinds of sightseeing trails, a total of 8 kilometers. The design also provides 52 viewing Spaces of different sizes. In order to meet various needs and respond to emergencies, a number of uphill and downhill routes and entrances are planned. Formed a free and optional more traffic streamline system.

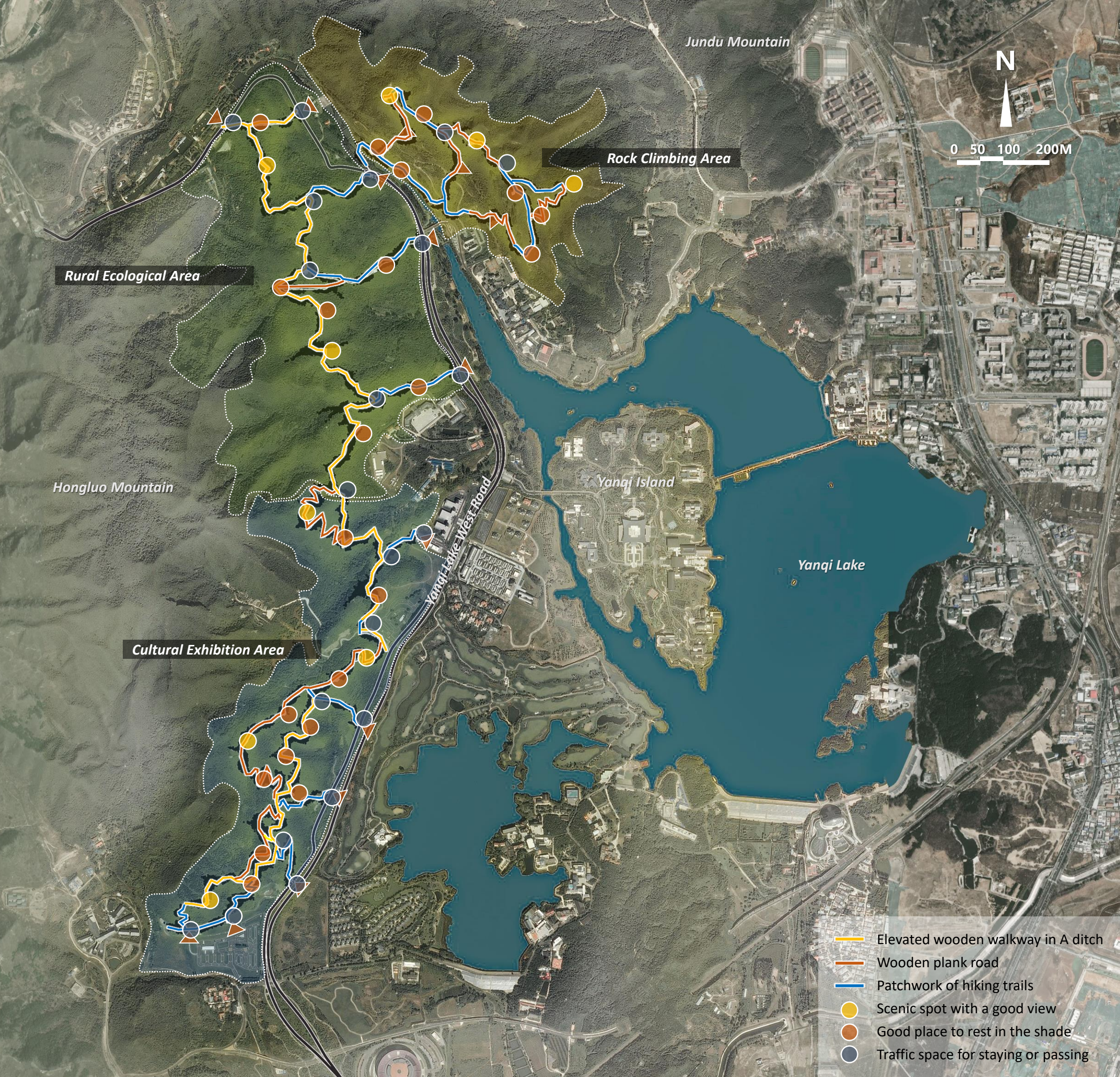
- 9

SCENIC SPOT WITH A GOOD VIEW
- 22

GOOD PLACE TO REST IN THE SHADE
- 21

TRAFFIC SPACE FOR STAYING OR PASSING
- 8km

HIKING TRAIL WITH A VIEW OF THE MOUNTAIN AND LAKE



- Elevated wooden walkway in A ditch
- Wooden plank road
- Patchwork of hiking trails
- Scenic spot with a good view
- Good place to rest in the shade
- Traffic space for staying or passing

PROJECT PROCESS



Tidy Up The Site



Transport Stone



Masonry Wool Stone Walls



Keel Laying



Poured Concrete



Installation Of Railings



Lay A Road Of Broken Flagstones



Lay Wooden Walkways



Lay A Wooden Walkway Over Ditch



Mounting Seat



Lay Out The Rest Area



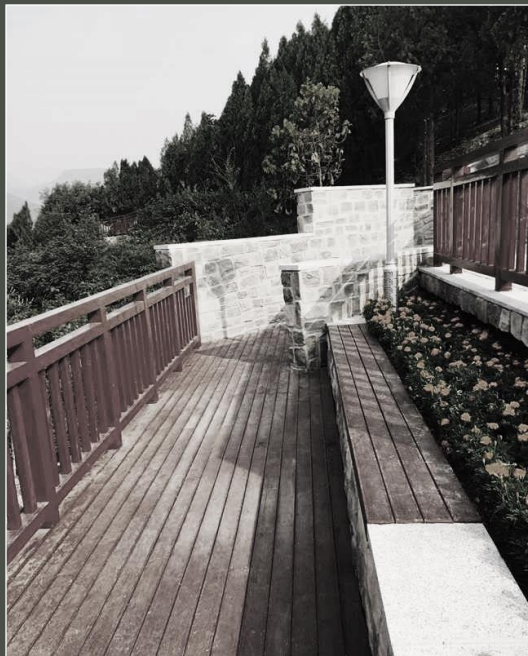
Supplementary Tree



Sow Grass Seed



Completion Of Trestle



Completion Of Landscape Site



RESPECT NATURE

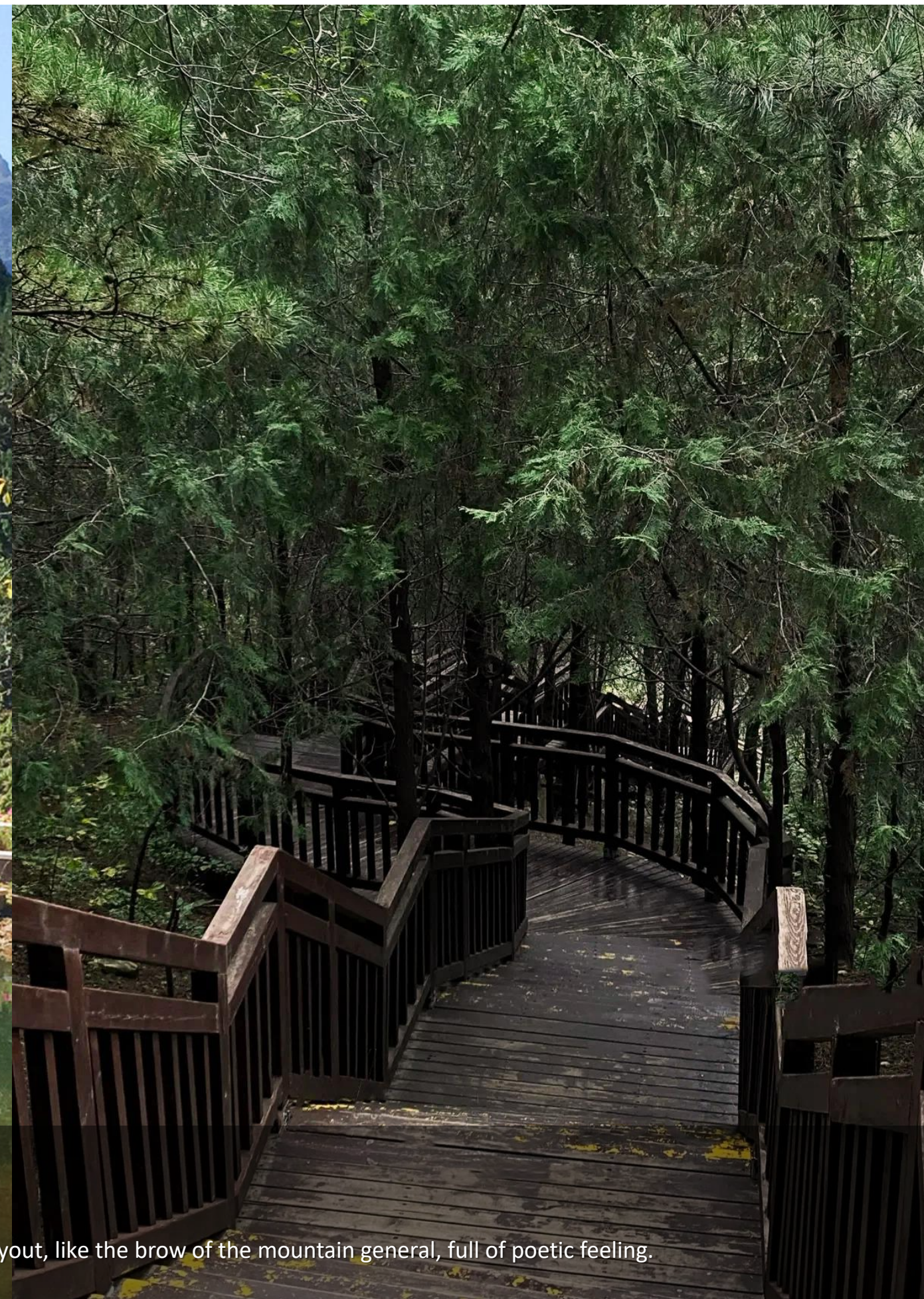
The principle of route selection insists on reducing the interference with nature and concealing the trail in the forest. The design adheres to the natural ecology, minimizes the damage to the mountain, and forms a hiking trail system compatible with the current mountain and surrounding landscape.





THEMATIC CONCEPTION

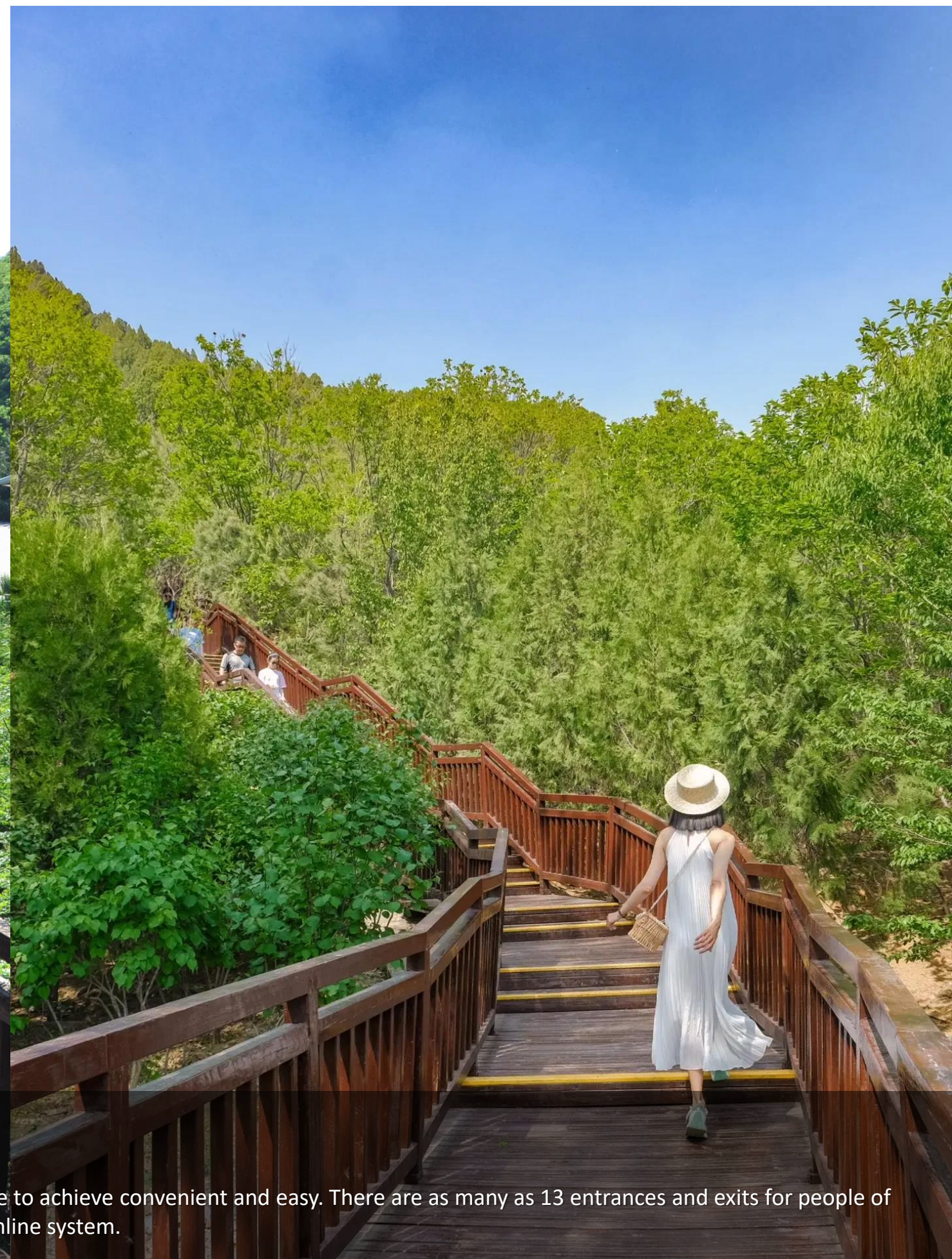
The theme of the project is to talk to wild geese in the mountains. The whole line winding along the mountainside layout, like the brow of the mountain general, full of poetic feeling.





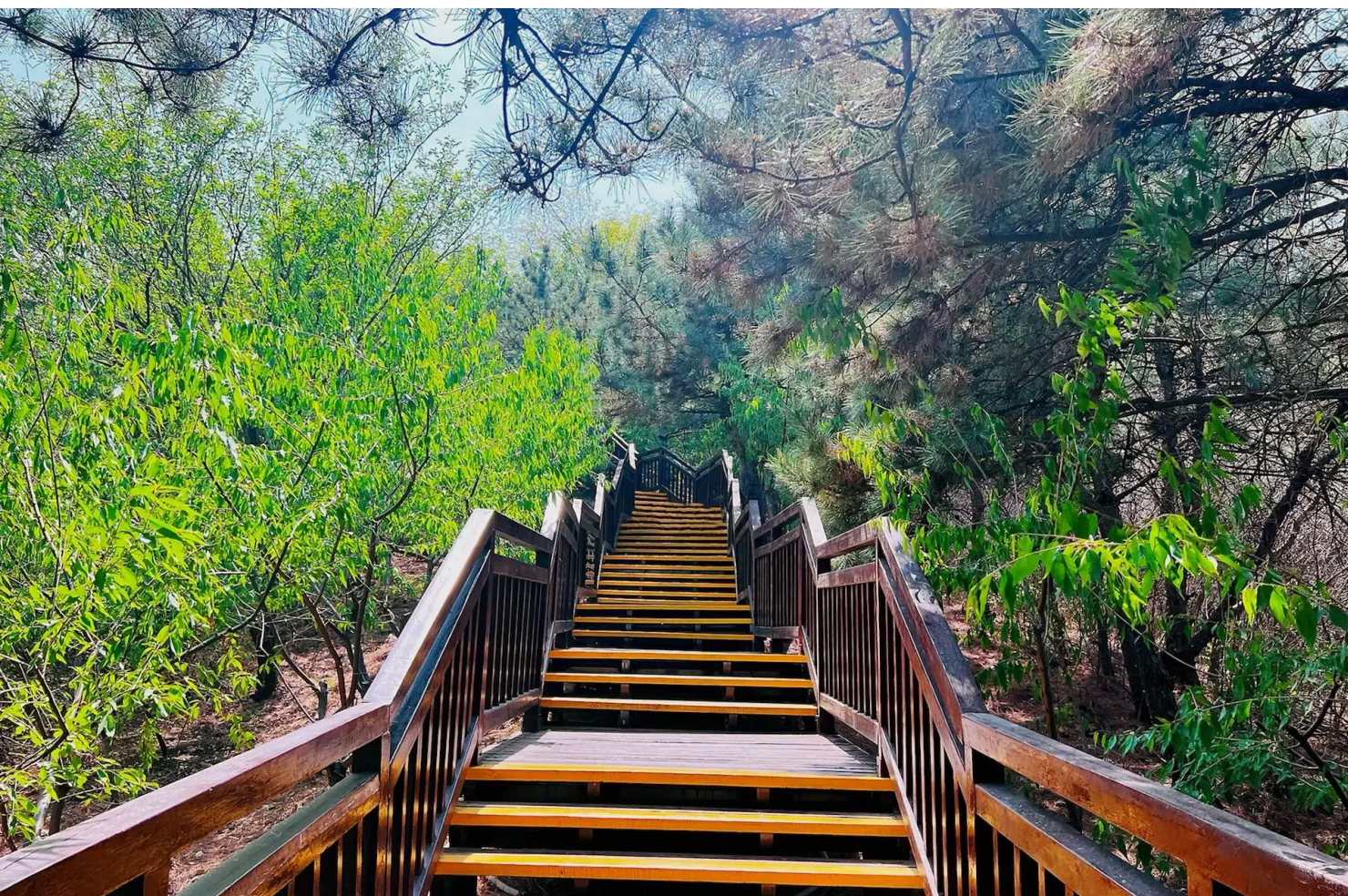
CHANNEL UTILIZATION

The present natural condition of the mountain is good. At the top of the hill is an aqueduct, built in the 1970s and now abandoned. Route selection is based on the aqueduct and combined with the aqueduct for historical and cultural display.



TRAFFIC ORGANIZATION

Project transportation organization on the premise of safety, according to the mountain trend, as far as possible to achieve convenient and easy. There are as many as 13 entrances and exits for people of different ages and different needs to choose sightseeing routes. Formed a free and optional more traffic streamline system.

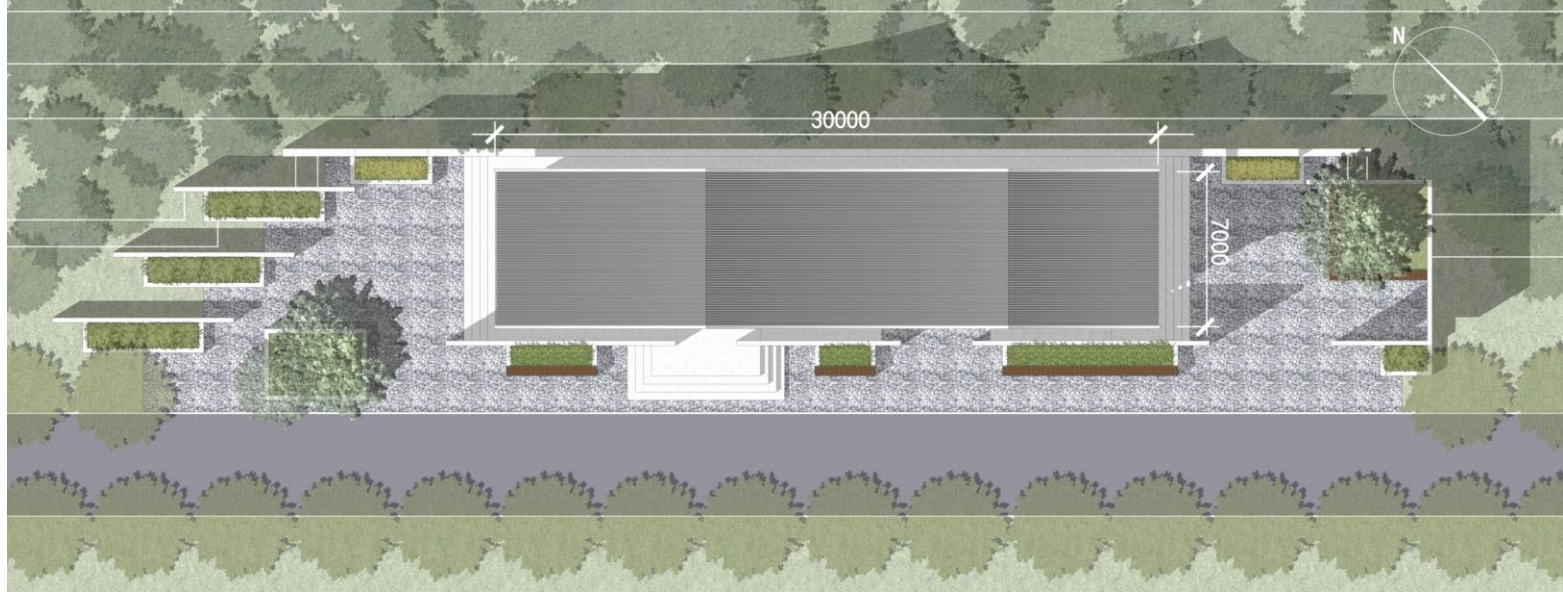
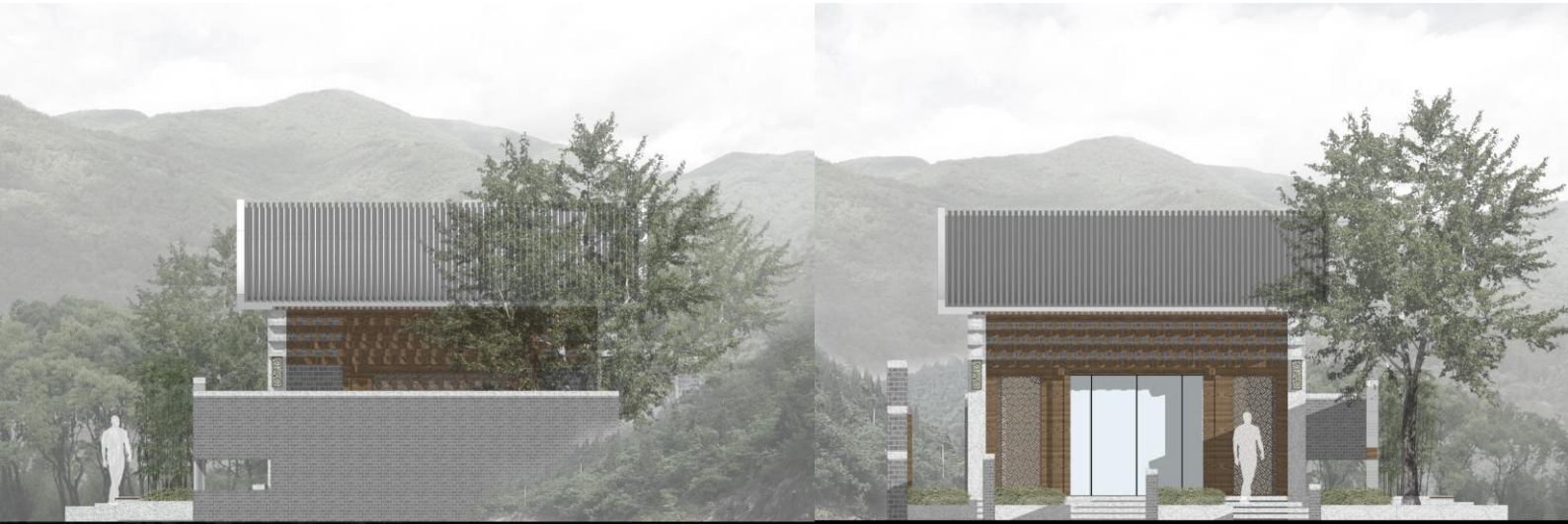


PLANTING DESIGN

Plant cultivation mainly depends on replenishment and repair. Repair disturbed vegetation along the trail route, using plants that are already on the mountain. At the same time, according to the direction of the line, the color leaf trees are planted to form the mountain color leaf tree landscape. Create a good mountain planting habitat.

ARCHITECTURAL DESIGN

The construction of supporting tourism service facilities is carried out in the current construction area. The design satisfies the tourist service facilities such as public toilets (built in accordance with the standards of tourist attractions, which can guarantee the use in winter), sales kiosks and supply points.





CONCLUSION

The whole design improves the tour structure of Yanqi Lake and connects with the service facilities around Yanqi Lake. The design makes up for regional weaknesses and forms a complete public tourism infrastructure system. The project will open up the whole surrounding mountains of Yanqi Lake, making the lake viewing and sightseeing experience reach a new height.