



# Cultural Inheritance of Lingnan(Guangdong) Canal Town

**Lantern Lake Municipal Park**

Foshan City, Guangdong Province, China



## Three Features



### Connect the City Nodes

Integrate the place's natural heritage of mountain and water into contemporary city building by making the thousand lantern lake join the Foshan river and constructing a continuous waterfront pedestrian system and landscape corridor to realize the comprehensive connection of the shoreline space.



### Vibrant Waterfront Destination

Celebrating the authentic local culture by combining drainage infrastructure and urban place making, Lantern Lake Municipal Park is a vibrant waterfront destination for diverse activities.



### All-day Experience

Lantern Lake Municipal Park provides an active public gathering space that transitions from day to night with unique streetscape and lighting night scene containing cultural connotations.



## PROJECT STATEMENT

Lantern Lake Municipal Park is located in Guicheng Street, Nanhai District, Foshan City, Guangdong Province, China, covering an area of about 26.9 hectares. Construction started in February 2013 and completed in December 2020. Since its opening, the park has been widely praised by the public and has become one of the hottest and most popular waterfront parks in Foshan. The park with a life scene of "New Lingnan(Guangdong) Canal Town" has attracted talents and industries, and has realized a win-win development in which landscape value drives economic growth.

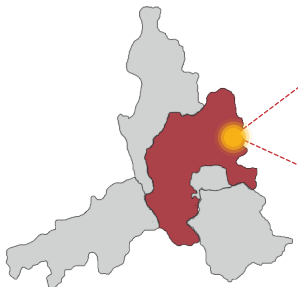
### Location:



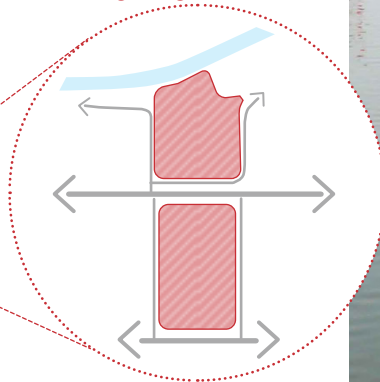
Guangdong, China



Foshan, Guangdong



Nanhai, Foshan



Size: 26.9ha



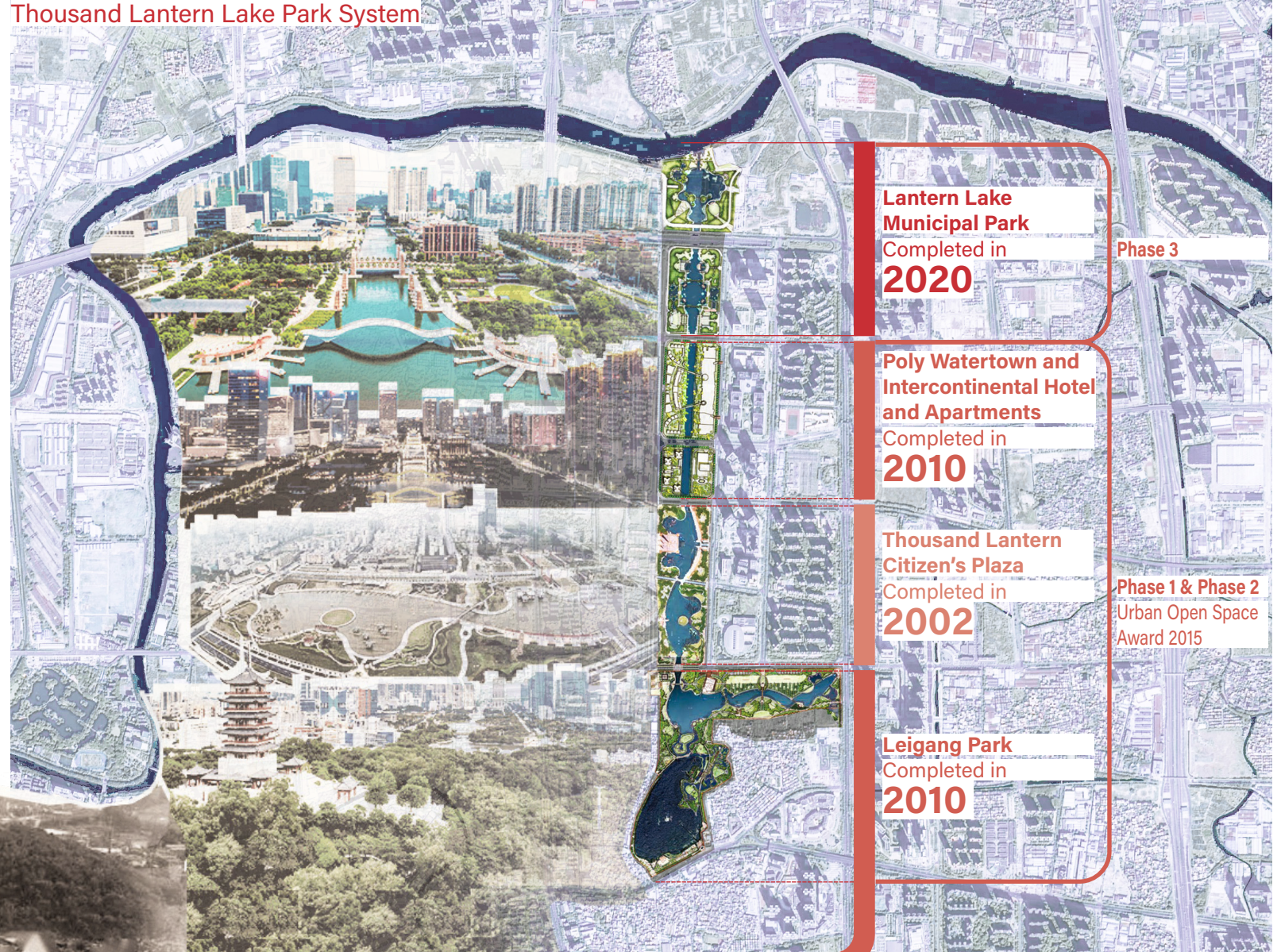


## Project Background

Nanhai District is a traditional canal town in Lingnan, the attachment to water is rooted in people's mind in Lingnan. The Lantern Lake Municipal Park is the third phase of the thousand lantern lake park system on the central axis of Nanhai District which has written a legend of urban development since the construction began in 1999.

Inheriting the design concept of the thousand lantern park system, the Lantern Lake Municipal Park integrates cultural elements of traditional canal town in Lingnan into contemporary city building and cultivates the image of "New Lingnan (Guangdong) Canal Town" and stimulates the inner vitality of a city and builds a place for people to communicate with each other. The construction of the Lantern Lake Municipal Park is undoubtedly another major measure to improve the overall level of urban public culture and the competitiveness of urban brands.

Thousand Lantern Lake Park System



90s



## Project Target

# "Cultural Inheritance of Lingnan(Guangdong) Canal Town"

Integrating the cultural elements of traditional canal towns while endowing them with modern connotations, the combination of traditional canal town and modern city will create New Lingnan(Kwangtung) Canal Town, which plays an important role as an urban living room with intertwined blue and green,vitality and resilience.



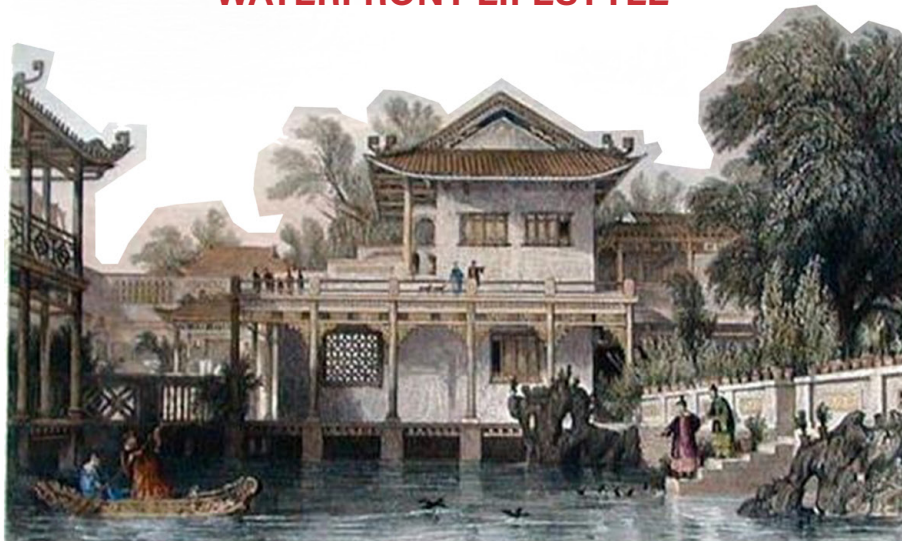
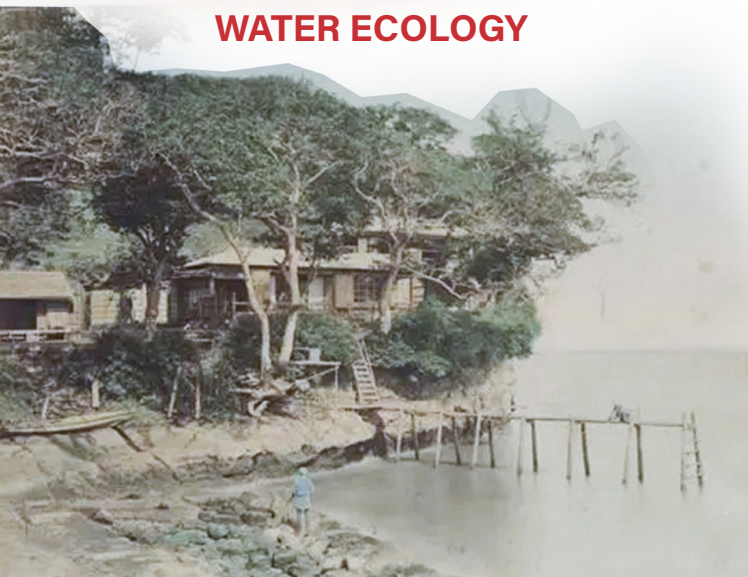
**WATER ECOLOGY**



**WATERFRONT LIFESTYLE**



**WATER ECONOMY**

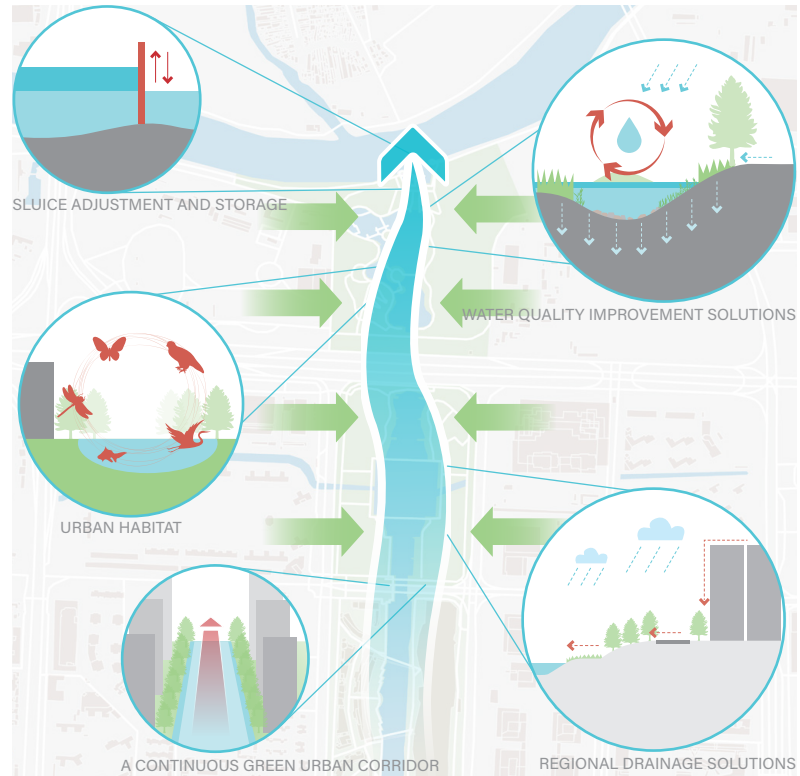




## Overall Strategy: Activating Water + Activating Land + Activating City

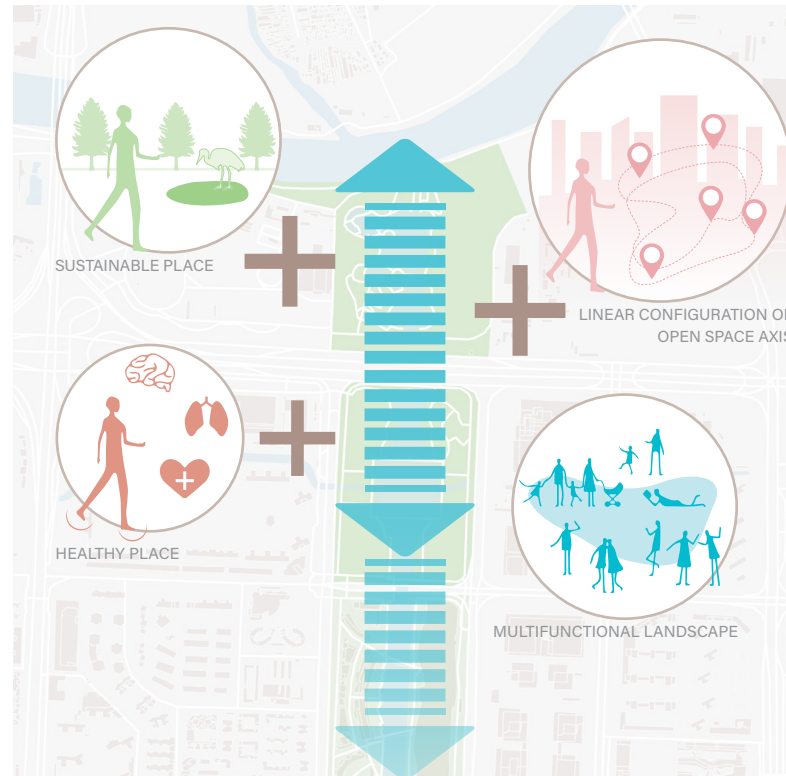
### Activating Water

Through the adjustment and storage of sluice, the water system is connected with the current Foshan waterway, and the intertwined green and blue networks form a robust and resilient ecosystem, improving the spatial resilience of the water system, and activating biodiversity.



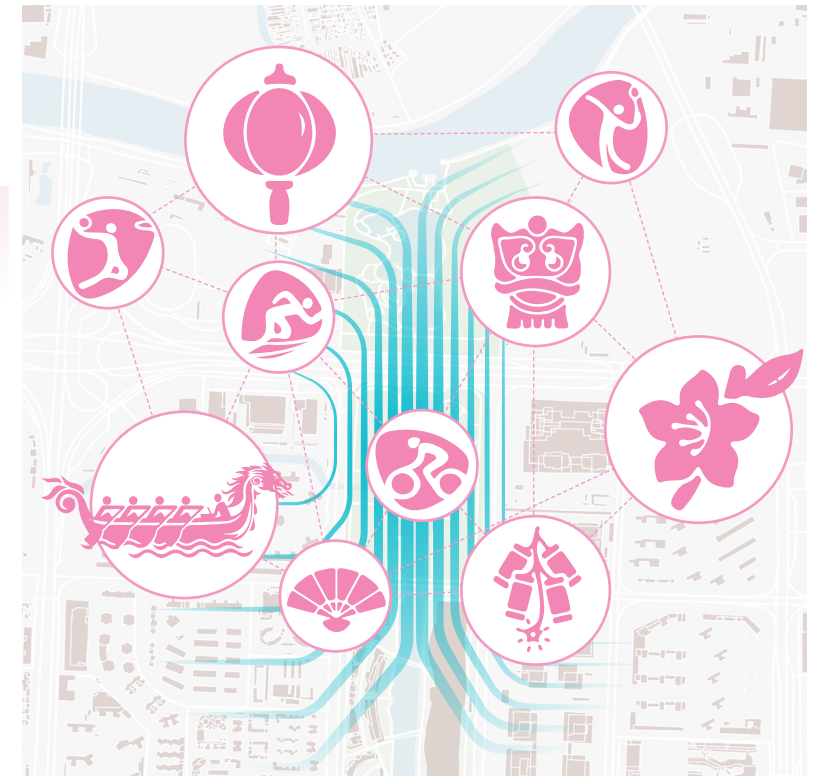
### Activating Land

Taking the water space of the Thousand Lantern Lake Park's water system as an important landscape element in the core area, it creates a comfortable, beautiful, Intertwined green and blue urban public space.



### Activating Culture

Develop traditional leisure and entertainment, embody the traditional water culture of the Pearl River Delta, recover the lost regional style and historical tradition, provide a variety of activities to attract tourists, and enhance the vitality of the city.





Master Plan



Legend

- |                                     |                            |
|-------------------------------------|----------------------------|
| 01 Lighthouse and Management Room   | 24 Xiaoyu Lane             |
| 02 Footbridge                       | 25 Celebration Square      |
| 03 Thousand Lanter Sluice           | 26 Guanhu Corridor         |
| 04 Lanter Lake Cultural Square      | 27 Sunrise Gate            |
| 05 Foshan Waterway Gazebo           | 28 Lighthouse              |
| 06 Floating Pier                    | 29 Dragon Boat Pier        |
| 07 Existing Chimney (reserved)      | 30 Three Holes Bridge      |
| 08 Welcoming Steps                  | 31 Waterscape Plaza        |
| 09 Welcoming Pier                   | 32 Bus Stop                |
| 10 Fuhai Ponds                      | 33 Public Toilet           |
| 11 Fuyuan Canal                     | 34 Aquatic Plant Revetment |
| 12 Public Toilet                    | 35 Children's Playground   |
| 13 Heming Mount                     | 36 Lingkong Pavilion       |
| 14 Dome Arena                       | 37 Crescent Gate           |
| 15 Shanyue Pavilion                 | 38 Lotus Pavilion          |
| 16 Renqiao Five Islands             | 39 Huipeng Pavilion        |
| 17 Underpass of Haiba Road          | 40 Sunset Plaza            |
| 18 Hui Fang Mount                   | 41 Lotus Pond Cafe         |
| 19 Guanlan Peak                     | 42 Sunrise Plaza           |
| 20 Fangcao Lawn                     | 43 Exercise Plaza          |
| 21 Terminal Tower and Power Station |                            |
| 22 Shanlin Tea Garden               |                            |
| 23 Thousand Lanter Water Pavilion   |                            |

Design Notes:

The project takes " Cultural Inheritance of Lingnan(Guangdong) Canal Town " as the vision, excavates Lingnan important cultural element in order to create a city waterfront park with local cultural characters.The earthwork in the site is balanced locally, the excavation and filling are used to shape a rich landscape and terrain system. Based on sound ecological underpinnings, the design uses restoration techniques and nature as a catalyst for healthy living where man and water exist in equilibrium.



## Construction Display-Social Benefits

The Lantern Lake Municipal Park provides a high-quality activity venue for the public in Nanhai District. Since its opening, it has held hundreds of large and medium-sized public cultural activities, such as festival light shows, orienteering pedestrianism activities, dragon boat race, etc., with more than one million participant. As a result, it has promoted the progress of social civilization effectively in Nanhai District.



Light Show



50KM Pedestrianism



Orienteering Pedestrianism Activity at Night



>1million

PARTICIPANT



## Construction Display: Festival & Special Events

It is a favorite place for all the important community ceremonies and festivals and is heavily used on a daily basis as a valuable piece of open space and as a destination for people from surrounding cities in the province.

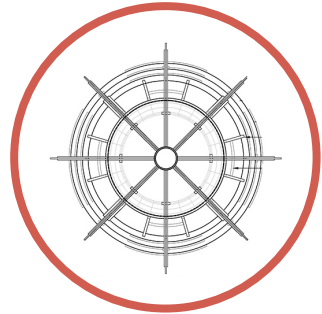




## Construction Display: Light Show



lantern



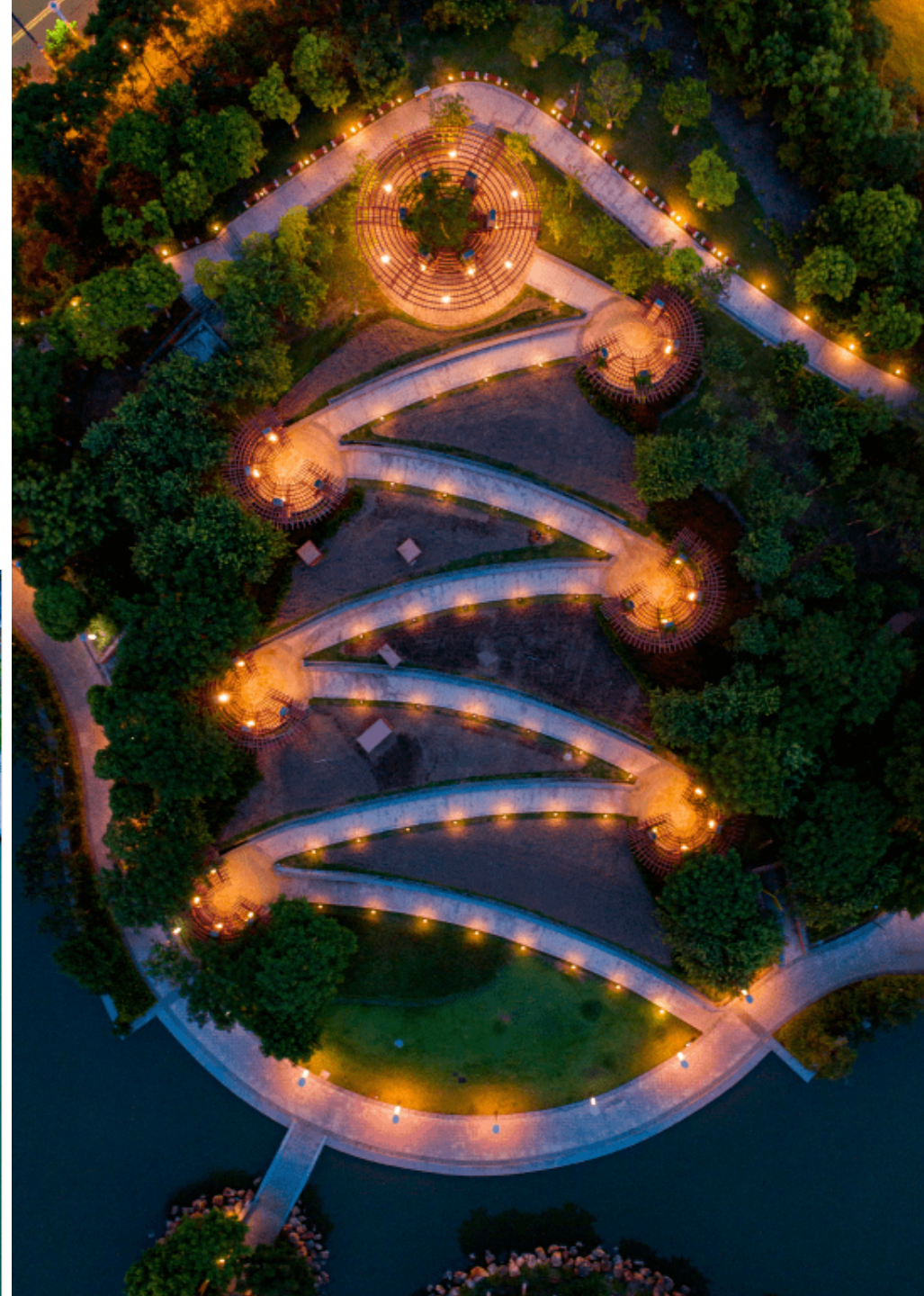
Thousand Lantern Water Pavilion Design



Landscape Lighting



The design of pavilions in the Lantern Lake Municipal Park continues the modern design and combines the shape with the aesthetic feeling of traditional lantern in Lingnan areas. These pavilions are like pearls, bright and attractive at night.





## Construction Display: Light Show

During the day, the three holes bridge is an interesting large-scale bridge in the city, while at night it becomes the carrier of large-scale light show, and plays a role of a memory point and symbol with great tension in the whole area.





## Construction Display: Dragon Boat Pier



Dragon Boat Stand



Dragon boat Race



Boating



The completion of Dragon Boat Pier not only upgrades the environment of its adjoining community, but also reestablishes the historical imprint of Lingnan back to community life, bringing a new cultural and living experience to the neighborhood and visitors.



## Construction Display: Ecology Benefits

About 75,000 square meters water has been purified after renovation in the Lantern Lake Municipal Park. The lake's capacity of storage and cultivation of water refines a lot, which greatly improves the water regulation function during the rain season and at the same time the stability of the ecosystem. Meanwhile, the self-purification capacity of the system has been improved as the result of the underwater forest and Taxodium distichum forest.



Underwater Forest



Ecological Waterfront



Connecting Water System





ANTERN LAKE MUNICIPAL PARK

## Construction Display *Taxodium distichum* Forest



Pavilion in Lingnan Style



Boardwalk



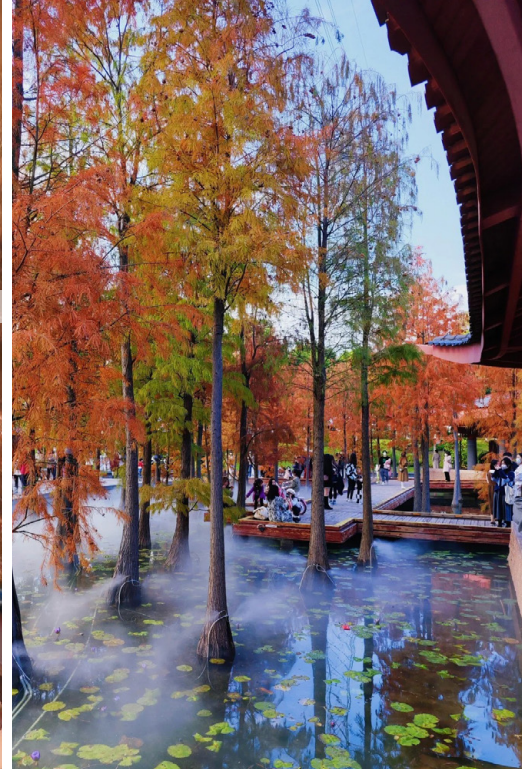
Waterfront

The pavilions in Lingnan style, winding boardwalks and waterfront enable visitors to have more places to rest for watching *Taxodium distichum* forest.



# Construction Display Taxodium distichum Forest

Pavilions and platforms are carefully placed to provide attractive focal points.





## Construction Display Flower Show



Spring Festival



May Day



Weekend



The sea of flowers encourages people to approach the beautiful nature.



## Construction Display Flower Show

The sea of flowers improves the happiness of citizens by different sceneries in four seasons.





## Construction Display

# Muhlenbergia capillaris

The romantic sea of Muhlenbergia capillaris has become a seasonal iconic check-in point attracting a lot of popularity.





## Construction Display-Economic Benefits

By the end of 2022, the financial high-tech zone around the Lantern Lake Municipal Park has attracted more than 200 financial institutions, more than 8 billion dollars cumulative investment and more than 3.4 million square meters office area.



Nanhai Wanda Plaza



Ipark Shopping Center



Commercial Corridor



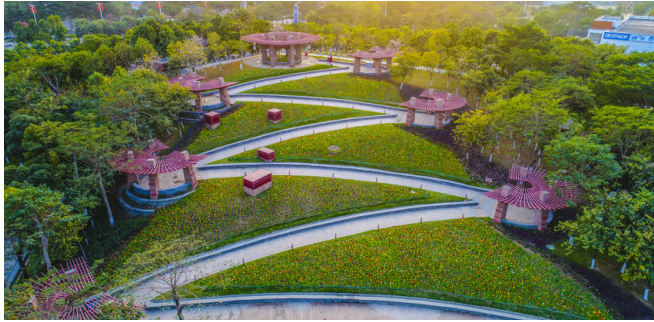
>200  
FINANCIAL INSTITUTIONS

>80 billion \$  
INVESTMENTS

>340ha  
OFFICE AREA



## Construction Display-Details



Garden Path



Plank Road



Thousand Lantern Gallery



Thousand Lantern Pavilion



Dragon Boat Pier



Railing



Thousand Lantern Water Pavilion



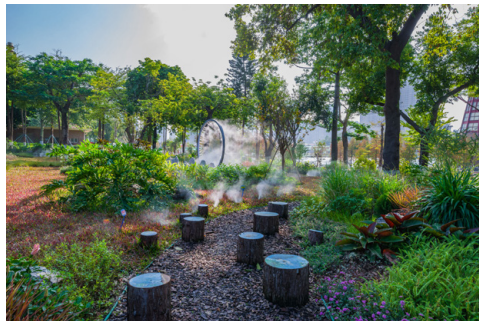
spherical Light in Pavilion



spherical Lights on Square



The Ring of Mist



Plum Pile



Wood Piles Adventure



Recreational Facilities



Sculptures in the Garden