



WEAVING HERITAGE LOOP

FARRER PARK FIELD & FARRER PARK ARENA, SINGAPORE

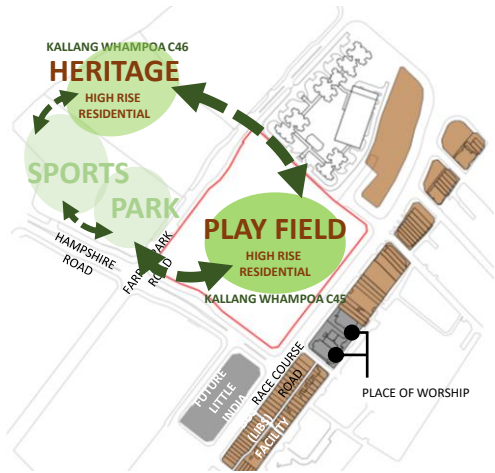
PROJECT STATEMENT:

Farrer Park Field & Farrer Park Arena is a public housing development strategically located in city central and proximity to many nodes. The site, renowned for its rich sports heritage, features an existing boxing gym within which is slated for repurposing and preserved during the design stage.

To create a cohesive estates, a seamless jogging track is weaved through both the high-rise plots, as well as the new public sport facilities and the new common green park. Inside the precinct, the jogging track meander through and connect the various precinct facilities/ spaces and landscape areas to activate the spaces and enhance the visual and social experience of the community. The track draws inspiration from the site's historical "loop" shapes, from its origins as a horse racing course to former sports tracks.

The development serves as a platform to focus on a recollection of activities, leisure and entertainment, sustain the community landscape that ties historic memories with the rejuvenated new urban communal space, focusing on residents' physical, mental, and social needs across different life stages. It aims to support overall health and well-being, contributing to an active, vibrant community rooted in history, creating a unique, cohesive, and dynamic public housing environment.

PROJECT NARRATIVE AND CONTENTS



LOCATION

FARRER PARK FIELD & FARRER PARK ARENA is strategically located along Farrer Park Road, Singapore. It is further surrounded by various transportation nodes and is in proximity to the Farrer Park MRT and Farrer Park Primary School. In addition, there is an existing boxing gym in Farrer Park Arena which inherited the site's rich history of the site as a sports hub in the region. The boxing gym will be repurposed by SportSG in the future.

The masterplan integrates a seamless jogging track, threading through high-rise plots, new public sports facilities, and a central green park.

SIZE & SITE

FARRER PARK FIELD - KWC45		FARRER PARK ARENA - KWC46	
SIZE	: 3.92 ha	SIZE	: 2.31 ha
UNITS	: 1274 flats	UNITS	: 569 flats
FACILITIES	: Childcare Centre, Roof garden, Hardcourt, Eating House	FACILITIES	: Childcare Centre, Roof Garden, Hardcourt, Indoor Pickleball Court



FARRER PARK FIELD (KWC45) & FARRER PARK ARENA (KWC46)

PROJECT NARRATIVE AND CONTENTS

Social Space Social Gathering

1842

Horse racing
and cattle
grazing

Grassland Habitat

1942

1960

Sports Hub

Active Exercise
Lifestyle

2024
FUTURE?

CONTEXT INVESTIGATION

LEARNING FROM HISTORY

Farrer Park has a rich and multi-faceted history, being the site of Singapore's first racecourse established in 1843, which later served as a public racing ground and rifle range. The first flight demonstration in Singapore also occurred here in 1911.

Since the 1950s, Farrer Park has been vital to Singapore's sporting heritage, providing facilities like a track and field stadium, swimming complex, boxing gym, and tennis center. It has also hosted numerous social and community activities, including football and rugby matches

DESIGN VISION

The landscape design aim to preserve the "charm of the old" by ensuring the genius loci remains legible and tangible. The design embrace the nostalgia while interpreting it to create a space that enables active lifestyle, social spaces, as well as enhancing nature & biodiversity.

ACTIVE LIFESTYLE

Integrating back
Farrer Park sports culture

GRASSLAND HABITAT

Enhancing nature and
biodiversity

Melting Pot of Site Spirits

SOCIAL SPACES

Creating opportunities for the
community to meet and interact

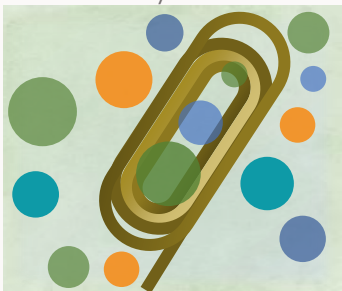
Enriching communal spaces through preserving Genius Loci

DESIGN APPLICATION

THE TRACK



Throughout history, there is a distinct shape of racecourse with its nearby amenities



Recollection of activities, leisure & entertainment



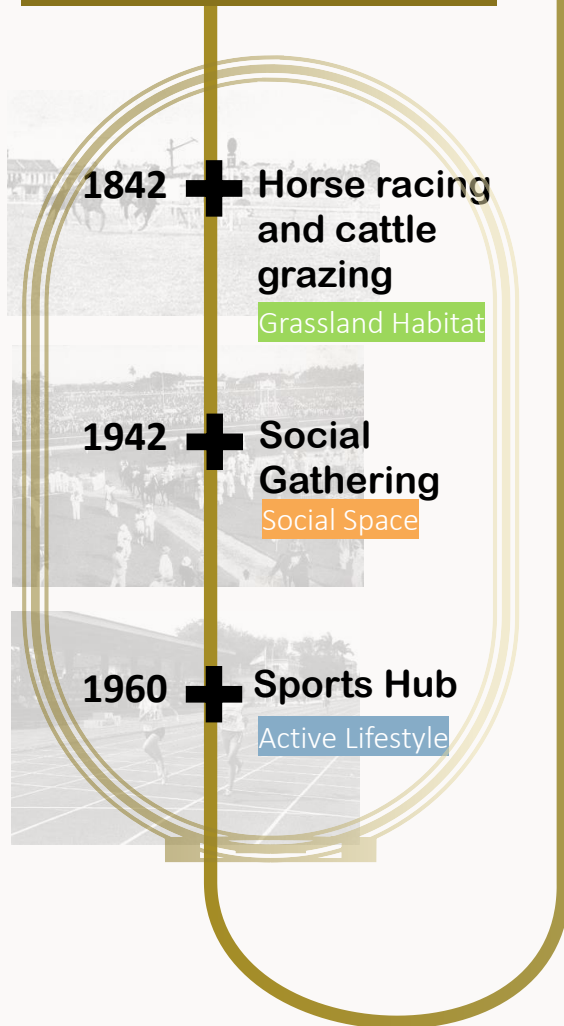
Landscape that ties historic memories with urban communal spaces that sustain the community

TRANSLATION OF THE "LOOP"

SOCIAL SPACE

Communal spaces such as community garden, lawn, and shelters are placed to create opportunities for the community to meet and interact comfortably.

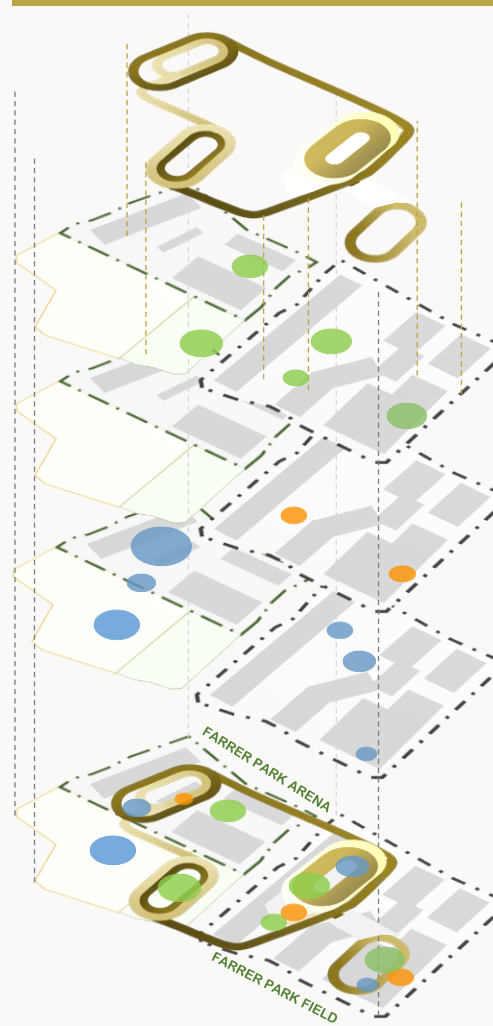
FP MULTI-LAYERED HISTORY



ACTIVE EXERCISE SPACE

Integrating back the sports culture by weaving multiple active point inside the landscape such as playground, and fitness station for both adult and elderly. They are located closely to one another to endorse multi-generational play.

MELTING POT OF SITE SPIRITS



GRASSLAND INSPIRED LANDSCAPE

The landscape space enhance the nature and biodiversity of the site and the surrounding and forms a seamless connection to the neighboring plots.

DESIGN APPLICATION



THE TRACK



GRASSLAND INSPIRED



SOCIAL SPACE



ACTIVE EXERCISE



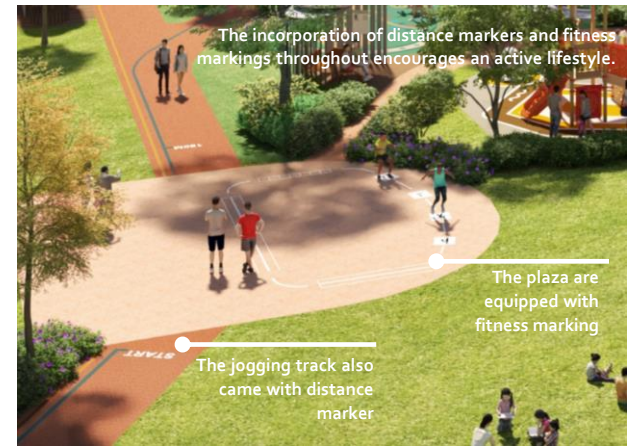
SITE PLAN



FARRER PARK FIELD & FARRER PARK ARENA

landscape design takes inspiration from the past. It is located on a site with a repository of cultural and social memory of the city, in Farrer Park area, Singapore. The looped jogging track serves as a central element, seamlessly intertwining historical memories with contemporary urban communal spaces, fostering a connection between the past and present. The jogging track weaves *Farrer Park Fields* (Kallang Whampoa C45), the sports precinct and park, *Farrer Park Area* (Kallang Whampoa C46).

The design language are strongly influenced by the "loop" shape commonly found over the years in the site, from the oldest horse racing course to one of the race track in the sport house once housed there. The landscape design also take a resident-centred approach and focuses on planning and designing around residents' physical, mental and social needs across different lifecycle stages. With a broader goal of supporting overall health and well-being, the carefully crafted design aims to contribute to a more active and vibrant community in the mature town, rooted in history.



ROOF GARDEN

The design aims for a lush and sustainable environment with a minimum 4.5 Green Plot Ratio, 50% Landscape Replacement, and 45% Green Cover. To achieve this, it incorporates a sky garden on the Multi-Storey Carpark (MSCP), a green roof on the Childcare Centre building, and a vibrant green facade.

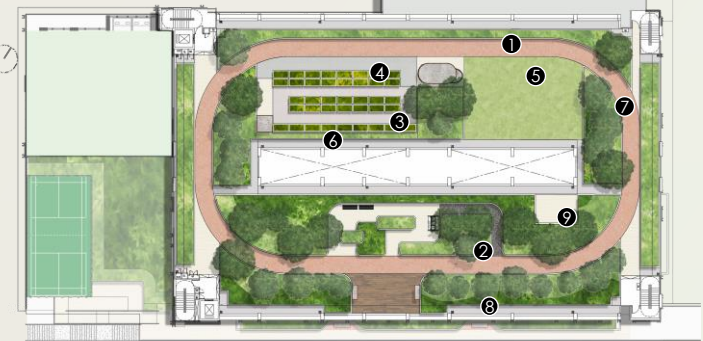
3 COMMUNITY GARDEN



The community garden offer more than just greenery; they foster community spirit and environmental stewardship. By converting the top levels of MSCPs into lush green spaces filled with vegetation and communal gardening plots, residents are provided with a serene sanctuary to connect with nature and each other. These gardens not only enhance biodiversity and mitigate urban heat but also promote sustainable living practices.

FARRER PARK ARENA

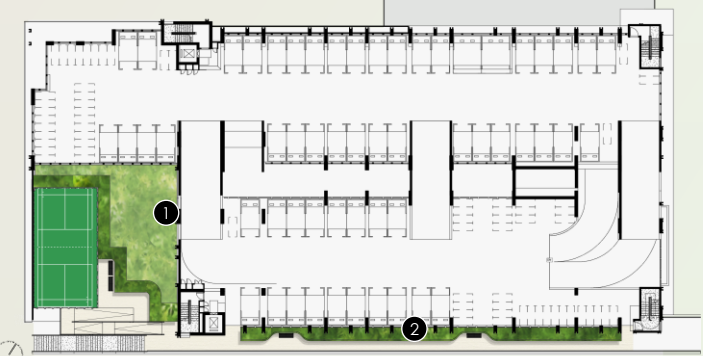
MSCP ROOFTOP



LEGEND

- 1 JOGGING TRACK
- 2 FITNESS STATION
- 3 COMMUNITY GARDEN
- 4 SHELTER
- 5 LAWN
- 6 VIEWING DECK

MSCP 2ND FLOOR

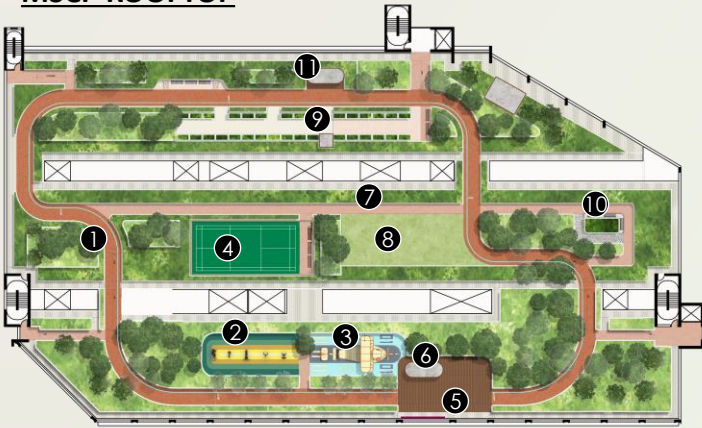


LEGEND

- 1 HARDCOURT
- 2 PARK VIEW
- 3 DECK

FARRER PARK FIELD

MSCP ROOFTOP



LEGEND

- 1 JOGGING TRACK
- 2 ADULT FITNESS CORNER
- 3 PLAYGROUND
- 4 HARDCOURT
- 5 HERITAGE DECK
- 6 DECK SHELTER
- 7 GARDEN WALK
- 8 MULTI-PURPOSE LAWN
- 9 COMMUNITY GARDEN
- 10 SENSORY WALK
- 11 COMMUNITY SHELTER

Across from the heritage deck is the historic and charming row of shophouses on Race Course Road. The design includes heritage boards to explain the significance and history of these beautiful structures.

5 HERITAGE BOARD



PLAYGROUND

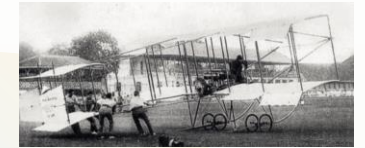
To promote three-generational bonding among the elderly, adults, and children, the design thoughtfully placed fitness stations and playgrounds close to one another. There are designated fitness stations for the elderly and adults, ensuring that each age group has appropriate facilities. Similarly, the children's playgrounds are divided into areas suitable for different age groups: one for children aged 2-5 years and another for those aged 5-12 years.



**Running Track inspired
Playground
For 5-12 years old**



**Horse Racing inspired
Playground
For 2-5 years old**



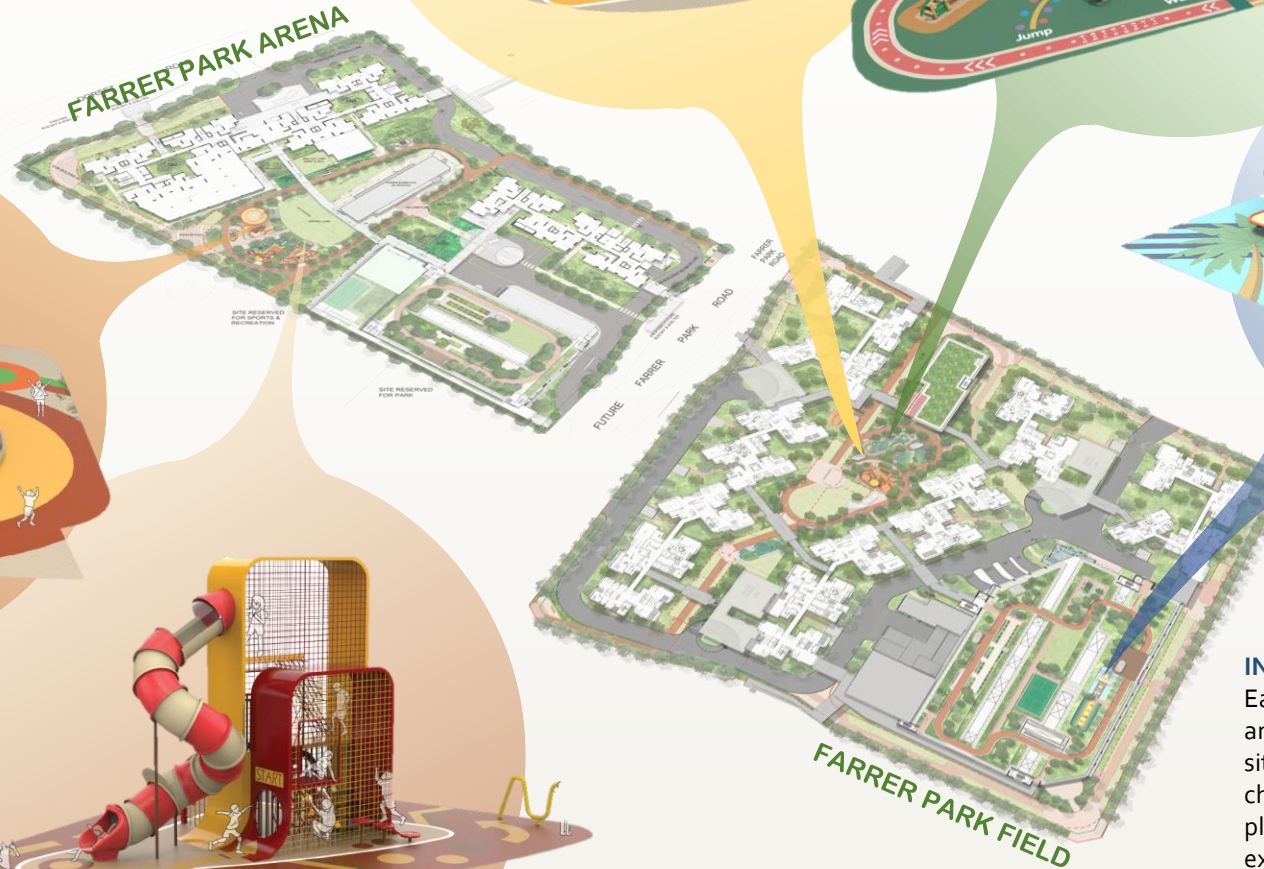
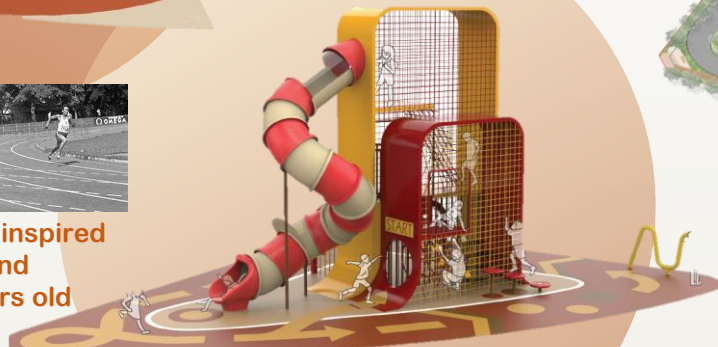
**Power-flight inspired
Playground
For 2-5 years old**



**Horse Racing inspired
Playground
For 2-5 years old**



**Running Track inspired
Playground
For 5-12 years old**



INTRODUCING SITE HISTORY TO KIDS

Each playground is designed to reflect the activities and historical moments that once took place on the site, preserving its rich heritage and introducing children to their country's history. Additionally, each playground features storyboards or infographics that explain the historical inspiration behind its design, allowing visitors to appreciate and learn about the site's past while enjoying the facilities.

SOFTSCAPE

Tree planting is meticulously planned to provide ample shade along footpaths and around facilities such as playgrounds and fitness stations. The selection of tree species is designed to enhance and rejuvenate the habitat quality of the existing ecosystem while diversifying the range of ecosystems and plant species. Emphasis is placed on prioritizing native species to support local biodiversity, and invasive species are strictly avoided.

COMMON PLANTING AREA

In line with surrounding neighbourhood



*Diospyros
buxifolia*



*Citharexylum
spinosum*



Dyera costulata



*Flacourtia
inermis Rukam*



Bridelia ovata

Low maintenance

ROOF GARDEN

Small Trees



*Kopsia
fruticosa*



Lawsonia inermis



Leea rubra



*Mussaenda
erythrophylla
'Dona Luz'*



Hamelia patens

Sensory Plants

Lush Planting

GRASSLAND INSPIRED PLANTING ZONE

Upright structure



*Cassia
fistula*



*Citharexylum
spinosum*



*Cymbopogon
citratus*



*Stachytarpheta
indica*



*Vetiveria
zizanioides*

SENSORY GARDEN

Sensory texture



*Coleus
amboinicus*



Ixora 'Pink Dwarf'



*Nycanthes
arbor 'tritis'*



*Melaleuca
linariifolia Çlarat
Tops*



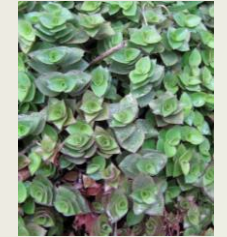
*Lantana camara
'Spreading Sunset'*

Soothing colours

Fragrant smell

The rain gardens effectively manage stormwater runoff by capturing and filtering rainwater, reducing flooding, and improving water quality. These gardens enhance the aesthetic appeal of the estates, promote biodiversity, and educate residents on sustainable living practices, contributing significantly to environmental sustainability and the livability of the communities.

RAIN GARDEN



Callisia repens



Phyllanthus cochinchinensis



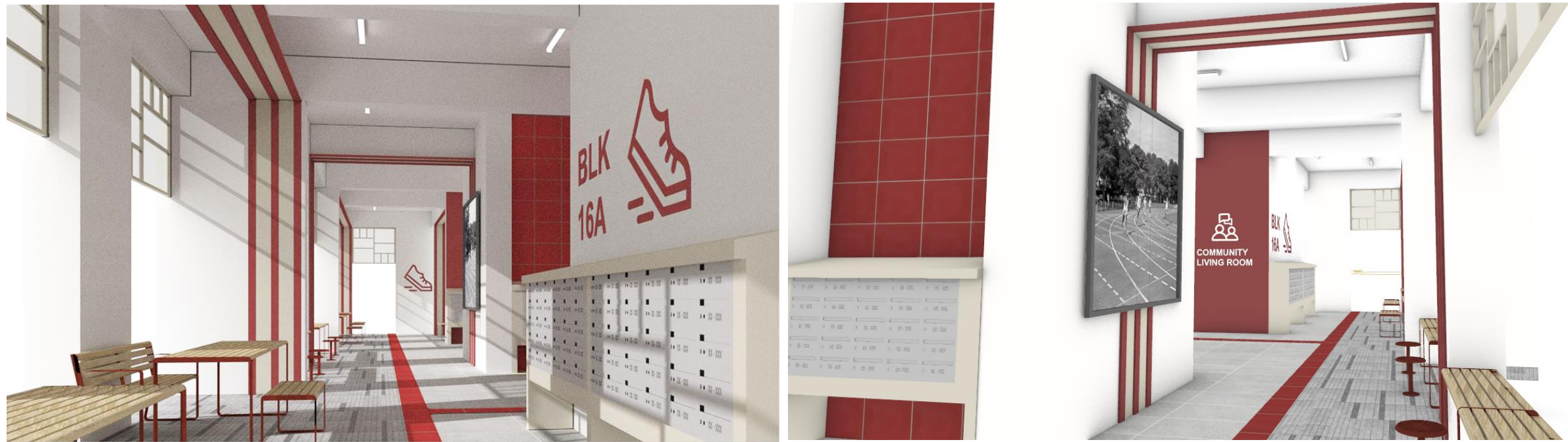
*Asystasia gangetica
variegata*

FARRER PARK FIELD (KWC45)



COMMUNITY LIVING ROOM-KWC45

FARRER PARK FIELD takes inspiration from the past. The design of the void deck is inspired by a jogging track, features bold strip lines and sport logos on each block, creating a dynamic and athletic atmosphere.



SPORT LOGO





POWER
RUNNING
HOCKEY

FARRER PARK ARENA (KWC46)

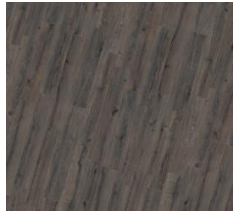


COMMUNITY LIVING ROOM-KWC46

FARRER PARK ARENA takes inspiration from the past. It is located on a site with a repository of cultural and social memory of the city.



MATERIAL PALETTE



TIMBER
LOOKALIKE
TILES



BEIGE
PORCELAIN
TILE



WHITE
PORCELAIN
TILE



BEIGE ALUM.
PERFORATED
CEILING



GREY ALUM.
PERFORATED
CEILING

MURAL OF FAMOUS ATHLETES FROM VARIOUS FARRER PARK SPORTS CENTRES

