

IFLA AAPME Awards 2023  
Award Categories-Parks and Open space IFLA Member

PROJECT BINDER  
**A New Development Mode of  
Integrating Industry and City:  
Shenyang • Gyoen Park**  
**Shenyang,china**

**Project Name:** Gyoen Park

**Project Address:** Quanyun Road, Hunnan New District, Shenyang City

**National City:** Shenyang City, Liaoning Province, China

**Area:** 2.8ha

**Yeas of Compietion:** 2021 (completed project)

**Award Category:** Parks and Open space IFLA Member

## PROJECT STATEMENT

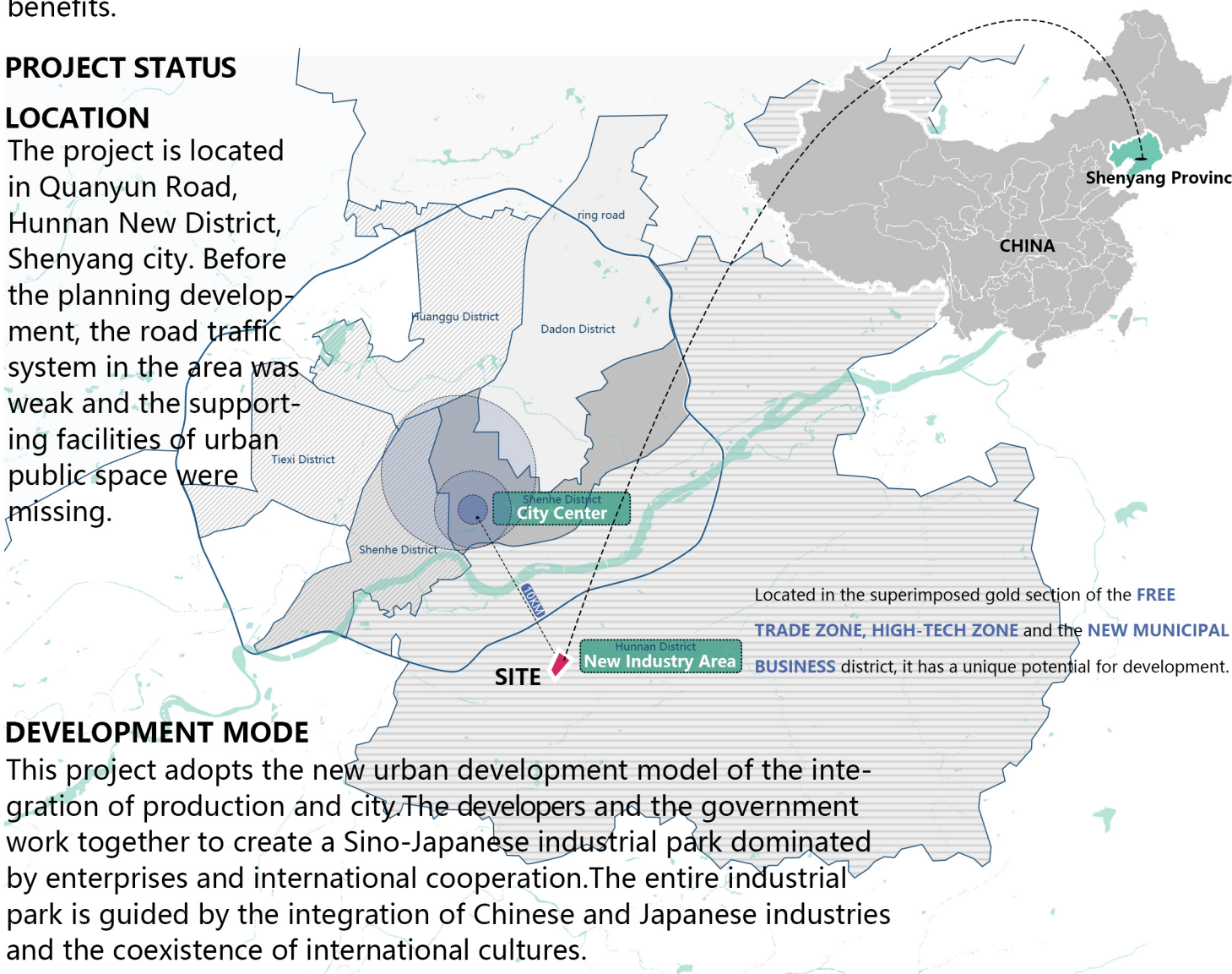
We have been exploring the benign relationship between man and nature in the city, eager to take the park-like urban and rural ecological pattern and style as the prerequisite for construction, and develop new urban areas with the urban development logic of city-people-production

We hope to build the urban skeleton through public space, making it the backbone of urban activities. By providing more high-quality ecologically sustainable scenes and abundant outdoor space, citizens will be attracted to settle here, thereby bringing actual regional economic benefits.

## PROJECT STATUS

### LOCATION

The project is located in Quanyun Road, Hunnan New District, Shenyang city. Before the planning development, the road traffic system in the area was weak and the supporting facilities of urban public space were missing.



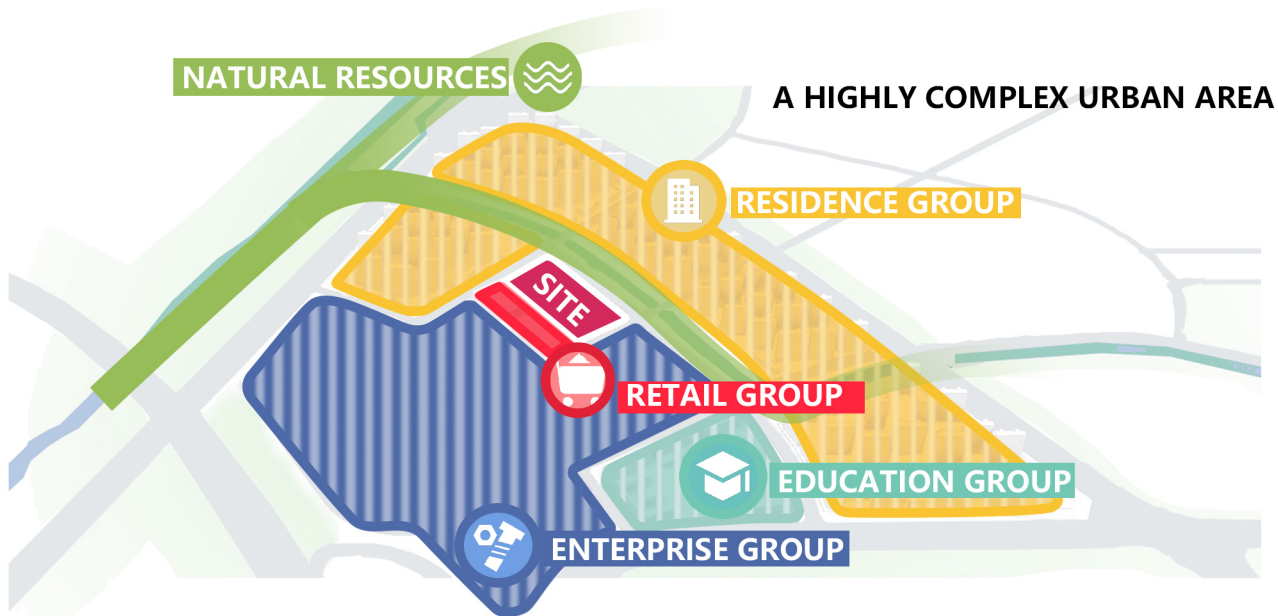
### DEVELOPMENT MODE

This project adopts the new urban development model of the integration of production and city. The developers and the government work together to create a Sino-Japanese industrial park dominated by enterprises and international cooperation. The entire industrial park is guided by the integration of Chinese and Japanese industries and the coexistence of international cultures.



## REGIONAL PLANNING

The site is wrapped by residential land, enterprise parks, commercial land and educational land which means It is a highly complex urban area. At the same time, it is also adjacent to the urban river, shouldering important ecological responsibilities



## PROJECT VISION

### AN ECOLOGICAL SPACE

We take ecological sustainability as the first concern, and build a park urban system around urban green space for office and residence. Encourage and promote more people to walk into the urban green and get close contact with nature.



### A FAIR URBAN SPACE

We are not satisfied with providing the basic services of the park, but fully consider the long-term effectiveness and sustainability of the public green space, carefully organize nature and culture, actively respond to the needs of various types of people around, and make it a truly fair and friendly public space. The close connection between the park and enterprises is another favorable factor for the long-term implementation of the project. The boundaries of the two will permeate each other, thus enriching the diversity of social relations and activities.



#### Citizens' expects

- Oxygen-rich environment
- Family activity space
- Convenient life and peripheral facilities



#### Employee expects

- Outdoor office environment
- Daily fitness activities
- Relieve work pressure



#### Developers expects

- Set up enterprise brand
- Obtain economic benefits



#### Government expects

- Show the image of the area
- High-quality public activity space
- Ecological green corridor node



#### School expects

- Students' outdoor classroom
- A safe neighborhood
- Extra outdoor activity space



#### Retail expects

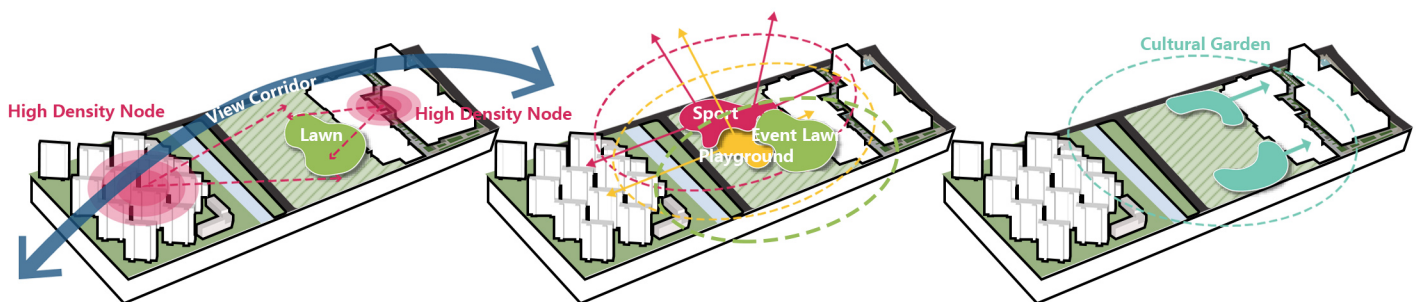
- Internet Celebrity Park attract people
- A comfortable shopping environment
- Business activities can be

## DESIGN STRATEGY

At the beginning of the project, the two largest ecological elements were fully concerned, one is the 2.8 hectares urban green space resources, and the other is the water resources connecting the tributary of Baitabao River. We take ecology as the first vision, build it as low as possible, and form the core of the design for a diverse plant community.



We use the least steel and concrete for construction, and use the simple combination of flowers, trees, water and stones to express most of the scenes. In addition, we also pay attention to the public and cultural attributes of the park as an urban space, which will bring richer living experience, improve the happiness index of residents in the surrounding communities, provide more convenience of life, and convey the humanistic care of the city. embody the urban spirit of park ecology, health, sports and art.



### Create View Corridor

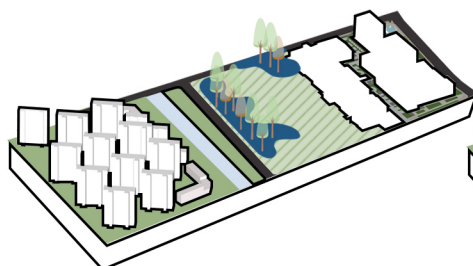
Create a visual corridor through the large lawn to create a low-density landscape feeling in a high-density city

### Provide Active Programs

Provide active programs to create a vibrant Hub to attract everyone

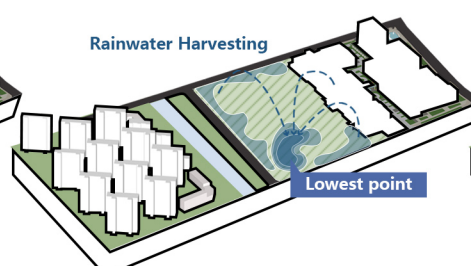
### Implant Cultural Imprints

Parks and commerce are closely linked, and culture and nature are skillfully integrated to create business cards for industrial areas, businesses, communities, and urban areas



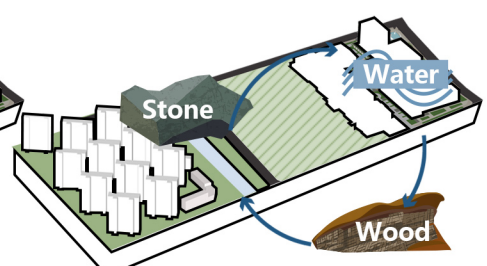
### Ecological Conservation Area

A complete forest belt is formed near the river channel, and trees of different sizes are planted to simulate the natural forest morphology and grow with the park over time



### Stormwater Management

The excavation and filling create a height difference in the site, with the sports field and commercial front square at the high point, and the water plaza at the low point

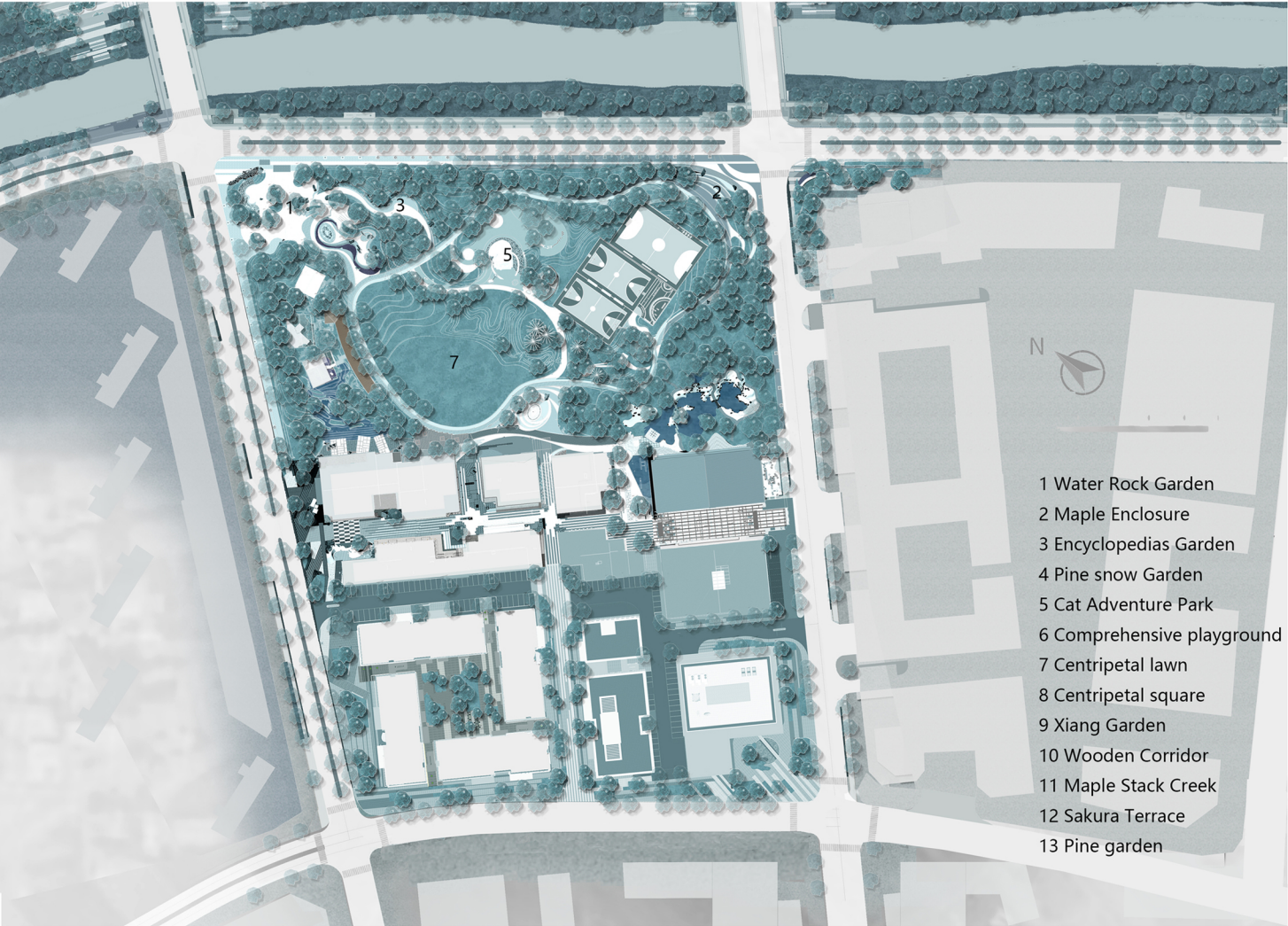


### Natural Texture Elements

Create the most natural feeling with a natural warm texture



MASTERPLAN



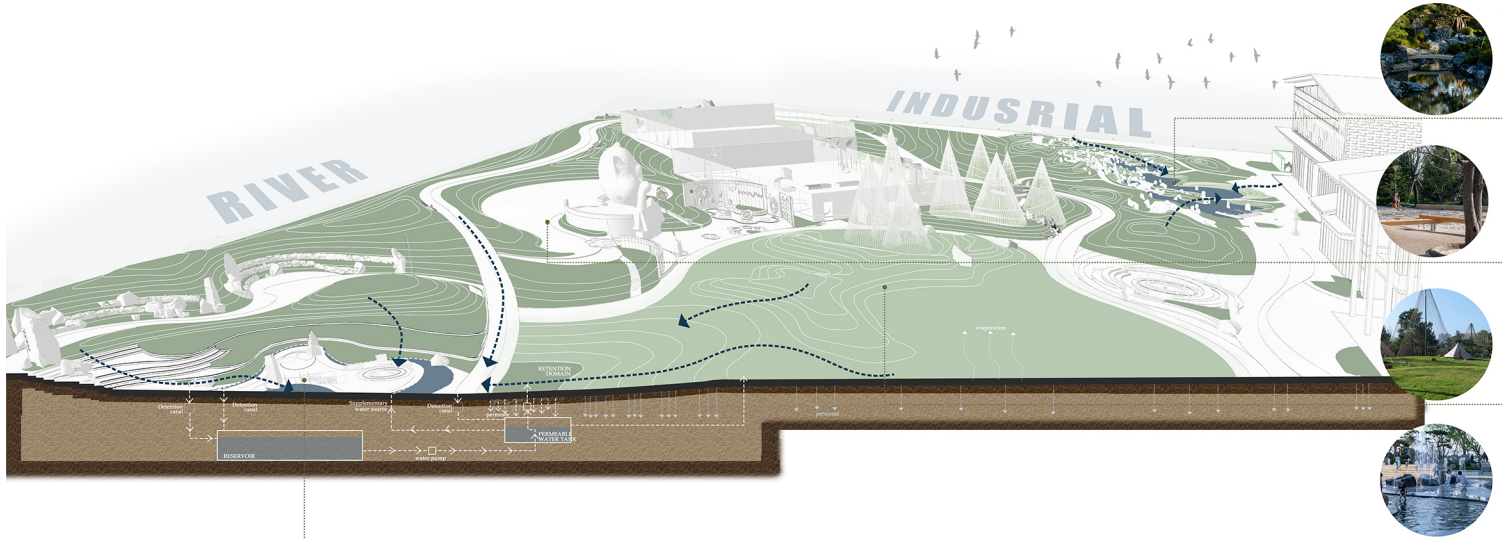
AERIAL VIEW





## PARK ELEMENTS-VERTICAL

The site grading & landform design is the first important order. The excavation and filling are balanced by the earthwork of the site, and the site experience and path experience are controlled through the terrain. The highest part of the earthwork can reach 2.5m, which brings a rich experience of entering the second important entrance of the park, step square and staggered playground. Control the ups and downs of the path, or pick up steps or climb gently, which increases the fun of walking. The rich terrain and the use of sponge materials have created a sustainable water circulation system, ensuring the growth of the park.



**WATER ROCK GARDEN:** The combination of natural elements, flowing water forms and natural stones forms a 1500m<sup>2</sup> citizen square. Two venues with different elevations are set up vertically, and the walls are paved and built to minimize artificial traces. The ground fragmentation and the paving that simulates the stream naturally join together. The stream fountain facing the "Mingxin" Sunshine Lawn is composed of artistically composed scenery stones, which is a choice for the surrounding residents to play in the stream in summer.



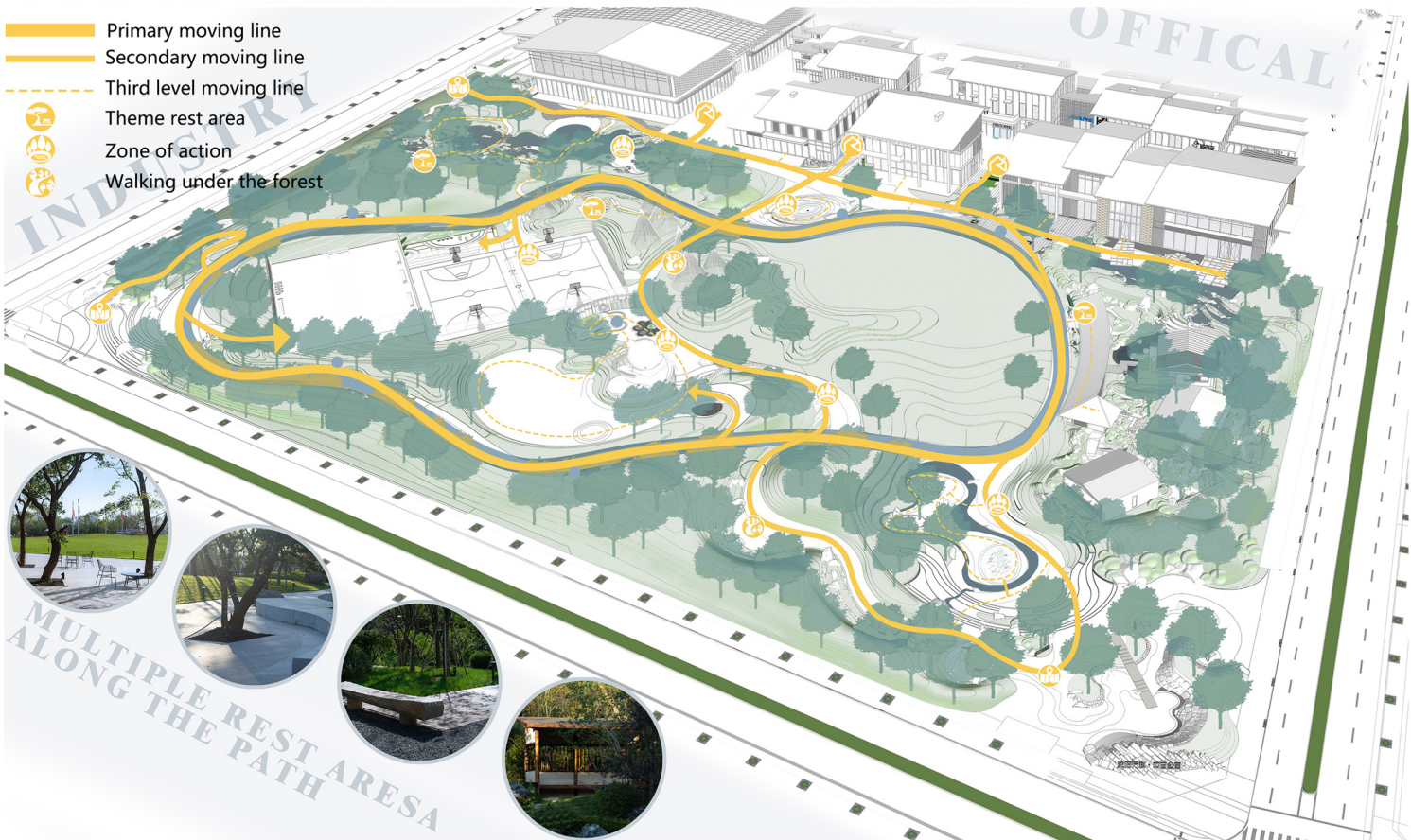


The actively raised elevation forms a natural scene at the corner that can rest with the steps. The red maple forest is used as the background forest on the steps, and the flower Manchurian ash biting the steps is formed. The color of autumn is a very important consideration.



### PARK ELEMENTS-PATH DESIGN

The whole park consists of an 800m healthy pedestrian road as a first-class road network connecting all the scenes of the park. It is close to the commercial and roaming cross streets, and the average road width is about 3.5m; The secondary road network as the connection between sites is controlled at about 3M; The tertiary road is about 1.8m. here are a certain number of recreational areas along the road, and the materials of the seats are carefully selected. The recycled old stone seats are a good choice for summer transfer time. The theme pavilion is formed by recombining the original building materials, and the flexible combination of chair forms and commercial reuse is used to maximize the utilization of resources.





The wooden Corridor around the "Mingxin" lawn is the only path with complex structure in the park. The single slope direction of the wooden corridor blocks the dazzling sunshine in the west, provides spacious seats facing the lawn, and deliberately lowers the line of sight, so as to control the quiet rest place.

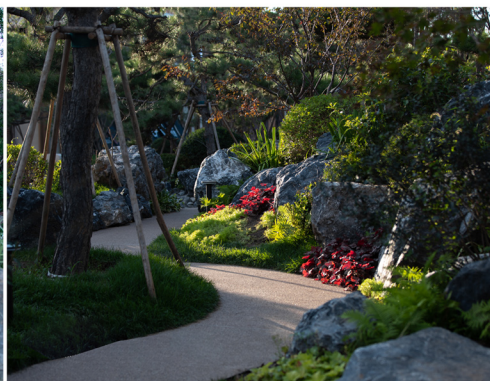




## PARK ELEMENTS-ECOLOGICAL COMFORT AND TIMELINESS



We hope that when we enter the park, the residents will get lost in the garden and choose different paths. The wild plant communities along the 800 meter path are always matched. Secondly, botanical gardens with different themes are set up, or they cross the path or purposely form local gardens. With the alternation of wither and glory and the change of the four seasons, we try to find the unique beauty of each season. Spring in the north is the time to look forward to color. The bright green of willows and the light powder of cherry blossoms in early spring encourage everyone to go out of the room. Autumn is a unique strong color. The falling snow in Shenyang also shows its vigor and strength through pine forests. 122 kinds of plant materials suitable for Shenyang are selected for the whole park, including 20 kinds of trees, 76 kinds of shrub ground covers and 27 kinds of herbs. 6000 square meters of sunshine lawn is also controlled to ensure the presentation of different colors in different seasons. Establish a healthy growth ecosystem for insects and birds, and choose to build small nests for insects and birds. Walking into the park along the road, you can feel the temperature drop obviously when you are in green. In summer, by measuring the temperature inside and outside the park at 15:00 p.m., you are glad to see the change of temperature difference of 5 to 6 degrees.



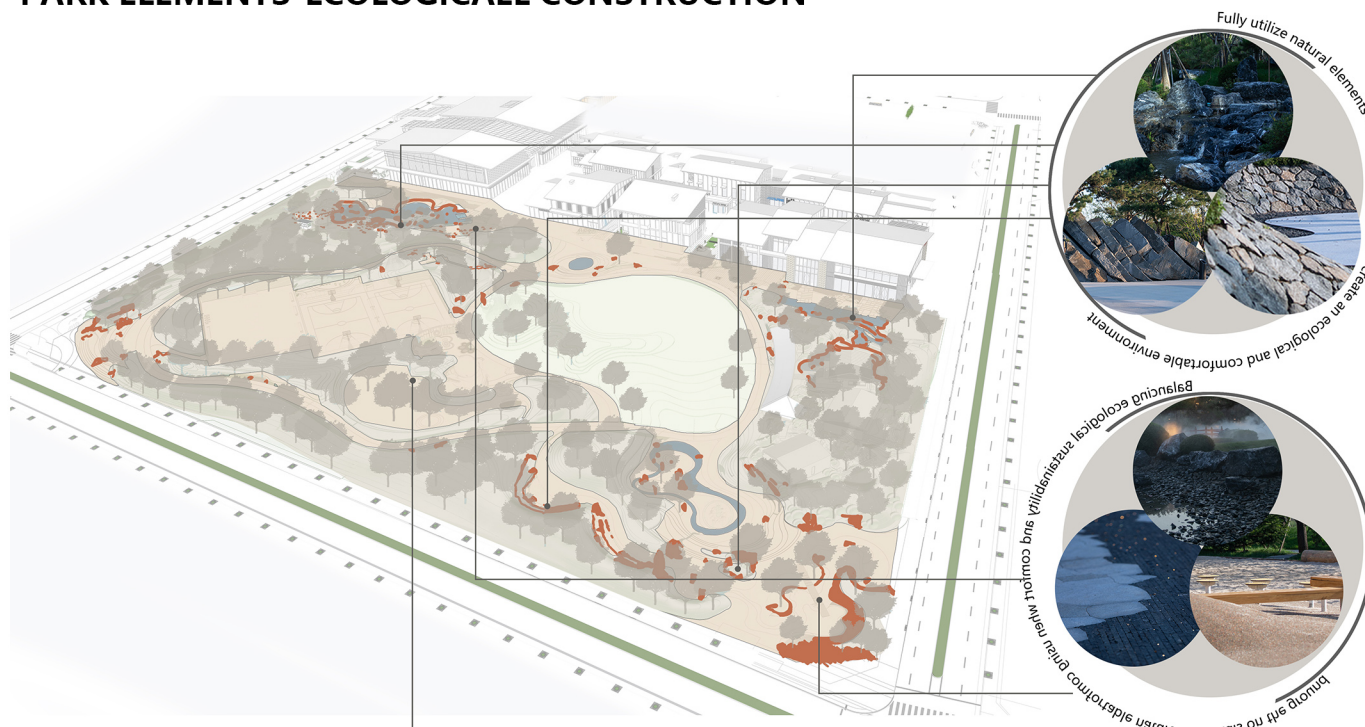
FOUR SEASONS ADD PARKS

Japanese Craftsmanship - Snow Suspension  
Protecting Plants in Winter

Plant Growth



## PARK ELEMENTS-ECOLOGICALL CONSTRUCTION



The creation of ecological parks is more for the sustainable growth of the site. Soft materials such as permeable bricks, sand, stones, etc. are used, and the boundaries of soft water features bring nature to this reinforced concrete city. Use simple combinations of flowers, trees, water, and stones to express most of the scenes. Create an urban open space where you can spend time in nature. Hydrophilicity is the essence of people's hearts, and multiple forms of waterscape design penetrate into activity spaces, bringing agility and vitality into the park



Eco-elements and comfortable environment



## LONG TERM EFFECTIVENESS OF THE PARK

The function selection of the park has been repeatedly demonstrated for many times. After summarizing the actual experience data of the built and put into use public parks, Vanke finally determined the activity function with strong viscosity and high audience. It includes 1500 square meters of citizen square, 1500 square meters of commercial fountain square, family natural wild luxury cat theme park, two blue courts and a football field, 6000 square meters of sunshine lawn, including a cultural memorial garden, and 6000 square meters of Japan garden, which is the surprise of the whole park. Strive to let citizens leave home, office and online world, establish a healthy outlook on life, and attract visiting residents with natural beauty and interesting functions.

## CHILDREN' S AMUSEMENT PARK





**SPORTS STADIUM**



**SUNSHINE ACTIVITY LAWN**





## COMMERCIAL ACTIVITY SQUARE



## THEME GARDEN



## THEME GARDEN

Time is the best proof. Gyoen Park will become the most dynamic and vital public space in this area. It will bring richer living experience, improve the happiness index of residents in surrounding communities, provide more living convenience, convey the humanistic care of the city, and embody the urban spirit of ecology, health, sports and art of the park.