



INTERWEAVING NATURE · Αύρα

IFLA ASIA-PAC LA Awards 2024

Awards Categories-Social and Community Health

Project Binder

Project Name : Interweaving Nature · Αύρα

Project Address : Wuhan, Hubei, China

Area (sq.m) : 55000 sq.m

Year of Completion : 2023

PROJECT STATEMENT

The name of the project is derived from a Greek word “Αύρα”, which means “breeze”, a natural breeze in the morning and dusk. We hope to design a naturally meandering green valley in such a natural and romantic land of Huashan, Wuhan. Lakes and peninsulas, city and nature, the breeze flows freely, returning natural flavor and free breathing to the real life.

The landscape naturally spreads, grows and intertwines in Huashan Peninsula, perfectly blurring the boundary between architecture and landscape. The indoor and outdoor areas are connected by a boundaryless cloud corridor, which dynamically interprets the space-sharing function, creates an open and inclusive landscape, links the circulation with the landscape, and additionally increases the space utilization rate. The design provides an all-aged space. In the open floor, communication space, fitness space for the youngster, playground for the kids and recreational garden for the elderly, combining dynamics and statics, constructing an ideal space filling with strong sense of rhythm.

Shadows, seasonal aspects turn the design of the residential area into a topic of urban art, “natural, free, artistic” Αύρα lifestyle, provides people with a living space where you can breathe freely and feel the vitality.

PROJECT NARRATIVE

Located in the naturally romantic land of Huashan in Wuhan, the project evolves like the growth of a tree's roots. Here, nature mingles with the breeze, art intertwines with everyday scenes, creating a rich tapestry of life.

The landscape axis extends from central park like the sprouting roots of a grand tree, spreading, growing and intertwining across Huashan Peninsula according to the laws of nature. This natural network ultimately weaves a unique living space between the city and the lake. As the seasons change and all things grow, the roots continuously spread, creating a harmonious resonance between humans and nature.

The cloud corridor running through the main axis of the site also serves as an art gallery, threading together various elements. Here, the natural scenery unfolds before visitors like exhibits: Chinese tallow forests, artistic courtyards and serene gardens. Light and shadow, color and texture, ever-changing artistic scenes await explorations.

When living is woven into nature, it reflects life itself. The essence of nature, the inspiration of life, and the emotions of living are amplified in the pristine landscape. In this setting, a free and inclusive lifestyle emerges, making us cherish the overlooked beauties and the nurturing of our spirit.

PROJECT LOCATION AND SITE GENERATION

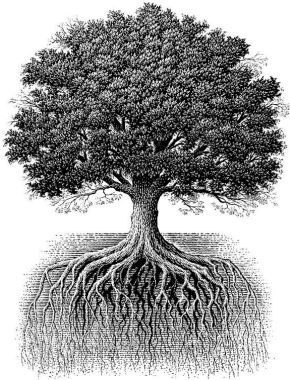
Project Location

The project is located in the ‘Huashan Peninsula’ Eco-City in Wuhan, Hubei Province, China. The overall regional planning context is that of an ecological and cultural new area, rich in surrounding ecological landscape resources and embraced by the natural resources of the lake peninsula. It is approximately one hour’s drive from the city center.



Root System: Central Park

The landscape emanates from Central Park, like the growth of a tree’s root system.



Artistic Clues

Spanning across the site, guiding the exploration of the scene



Ecosystem

Root System Spreading



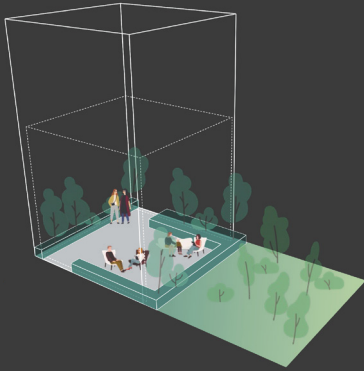
All-Age Functionality

Creating an All-Age-Friendly Functional Environment

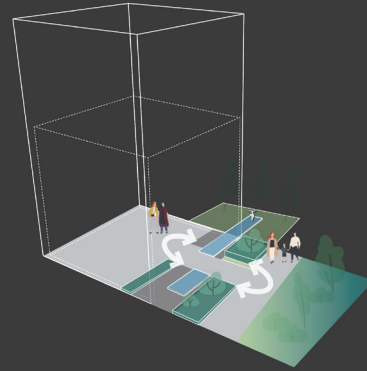


DESIGN STRATEGIES

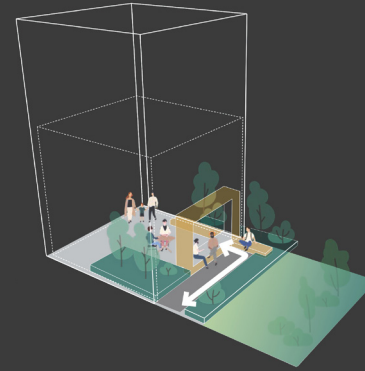
Boundless Space Harmonious Integration of Interior and Exterior



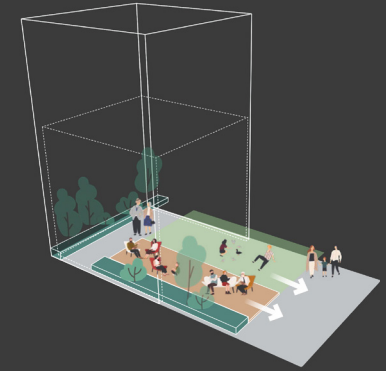
Envelopment



Mirroring



Connection



Outreach



Exclusive Garden / Overlook



Elevated Floor / Shelter



Exclusive Garden / Overlook



Cloud Corridor / Shelter



Scenic Park / Overlook

DESIGN STRATEGIES

Interweaving Nature



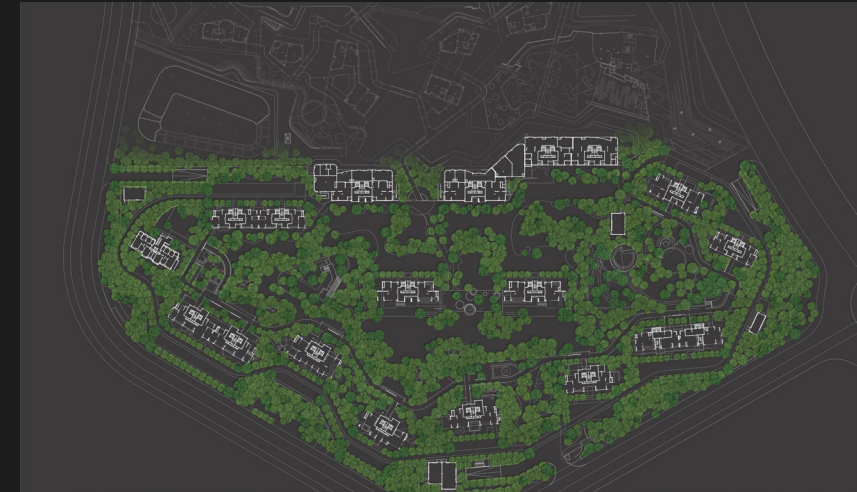
Scenic Island

Exclusive Living Garden



Scenic Network

Forest-style Living



Picturesque Landscape

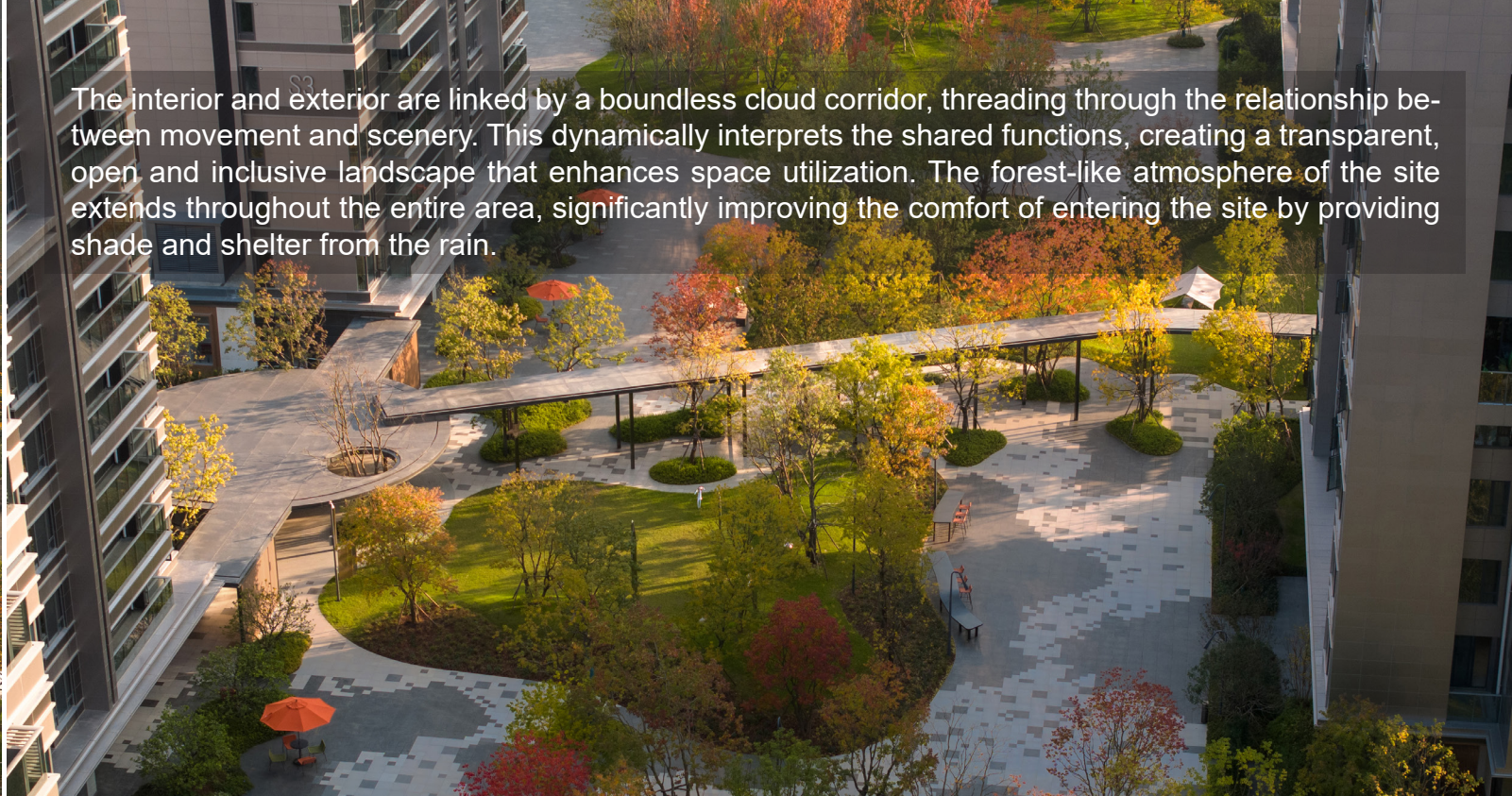
Immersive Scenic Experience

SITE PLAN & AERIAL VIEW



BOUNDLESS CLOUD CORRIDOR

The interior and exterior are linked by a boundless cloud corridor, threading through the relationship between movement and scenery. This dynamically interprets the shared functions, creating a transparent, open and inclusive landscape that enhances space utilization. The forest-like atmosphere of the site extends throughout the entire area, significantly improving the comfort of entering the site by providing shade and shelter from the rain.



BOUNDLESS CLOUD CORRIDOR—JAPANESE-STYLE GARDEN

Amidst the intertwining scenery of flowers, grass and trees, a hollowed-out corridor weaves through the garden. This dreamlike and enchanting boundless space offers pedestrians an intimate and immersive landscape experience.



OPEN FLOOR DESIGN

Starting from the interior of the building, the landscape seems to grow out of the building base, transparently revealing its roots. The interior and exterior coexist and grow together, with elevated floors and landscape design being considered as a whole, permeating each other, blurring the boundary between the architectural and landscape spaces. The youth exchange space in the open floor not only meets the requirements of spatial enclosure and scene transition but also extends scenes and functions to the surrounding landscape, enabling the community to overlap more flexibly in a dynamic space.



SUNKEN COURTYARD

Simple lines in the sunken courtyard are incorporated with appropriate texture changes. Rational and emotional visual collision and reconciliation created by corrugated stainless steel, glass tiles, and illusion glass constitute a multi-scenario artistic space in the courtyard.



SEASONAL VARIATIONS OF PLANTS



Like the growth principles of all natural things, everything follows the trajectory of time. The Chinese tallow tree roots downward and grows upward, displaying a spectrum of red, orange, yellow, and green throughout the year. A tree for all seasons.

OUTRO

Shadows and seasonal aspects turn the design of the residential area into a topic of urban art, “natural, free, artistic” Αύρα lifestyle, provides people with a living space where you can breathe freely and feel the vitality.

