

An aerial photograph of a modern rooftop garden. The central area is a patio paved with grey and white square tiles in a checkered pattern. Several white lounge chairs with black frames are arranged on the patio. A person in a red dress is sitting in one of the chairs, reading a book. The garden is surrounded by lush greenery, including various shrubs, trees, and large blue hydrangeas. The overall atmosphere is serene and modern.

A Healing Garden

NATURAL JEWEL

, Chengdu , Sichuan , China

PROJECT PROFILE

Rapid urbanization in China brings with it emotional illnesses caused by fast pace and strong pressure, which, luckily, can be cured by social interaction. Outdoor space plays a key role in social interaction, the design of which, therefore, should take into consideration individuals' psychology, emotional appeals and requirements for outdoor environment. Reshaping of the landscape will highlight the "openness" of the neighborhood space, providing more opportunities for natural and social interactions. Chengdu, a first-tier city in China with a permanent population of more than 20 million, has a fast-paced and high-intensity working and living mode that promotes the rapid development of social economy, but also leads to the increase of mental stress and negative emotions. In the Healing Garden of Natural Jewel, the designer creates different spaces with pleasant scales, colors and plants for social interactions, which can not only heal the heart but also encourage social interactions.



PROJECT STATEMENT

The project is located in Jinniu District, Chengdu, the capital city of Sichuan Province, China. The economic strength of Jinniu District ranks first among all districts and counties in Chengdu, and its economic aggregate accounts for about 1/9 of the whole city. However, behind the prosperity is the fact that people are forced to lead a fast-paced and high-intensity life, which results in the increasingly indifferent social relations and less interpersonal communication. The emotional and mental illnesses have become a big concern especially in high-end communities. Though the high-quality residential environment ensures privacy and separate space, it also brings less neighborhood communication and a sense of emptiness in the heart. Through in-depth analysis of individuals' psychology, emotional appeals and requirements for outdoor environment, the design team reshaped the landscape and created a platform for resource and information sharing as well as exchange of thoughts and emotions. The shaping of landscape spaces will effectively break the shell of indifference between individuals. Limited as the space is, it not only brings a great visual beauty but also helps to deal with some social issues.

Design idea: the design of the Healing Garden creates social spaces with different scales, colors and plants, which will meet the requirements for various social interactions, and lead to more active and positive social communications.

Design approach: Covering nearly 5,000 square meters, the site is divided into three linear healing gardens, which, easily accessible, are independent and integrated with each other as well. The healing gardens, with their independent spaces, are defined as the urban farm garden, the meditation garden and the social garden. All of them are aimed to heal the hearts, repair the relationships and help to deal social issues.

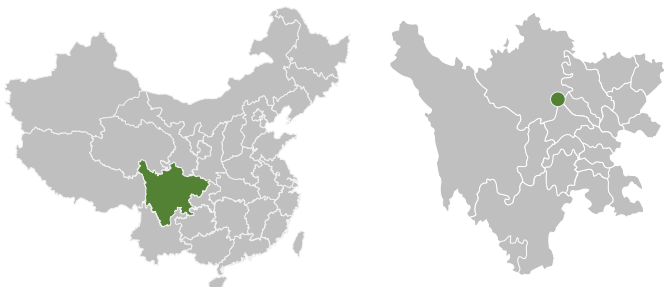
Urban Farm Garden: Covering an area of about 90 square meters, the garden is designed to be an urban farm for education and communication. A public neighborhood space serves as a platform for resource and information sharing as well as thoughts exchange. The interaction between people helps to achieve a better understanding and build a relatively stable social network. In the future, part of the flower beds in the garden will be used as farmland for children to experience farming. Courses such as plant and insect cognition and farming practice will be organized by the community committee or the property management company. In this way, families with children will gather together and know each other better. To create a relaxed atmosphere, green plants serve as the background, and a large number of globular plants such as privet, *Buxus sinica*, hydrangeas and *Juncus effusus* are employed to bring senses of security and peace. The square tiles in two shades of gray on the ground are paved in the pattern of “田”, a Chinese character means farmland. Two different colors will also make the space more dynamic.

Meditation Garden: This garden is about 75 square meters, providing meditation space for those who need to be alone and allowing them to gain energy and peace from a quiet environment. Studies have shown that when people meditate, their brain waves calm down, their mood becomes calmer and their muscles relax. As a result, they will unconsciously change the negative personalities and behaviors, and their memory as well as the ability to think and create will improve. We hope the garden will provide a space where people can find peace through meditation. With the concept of “a healing garden”, the space will allow people to relieve stress with pleasant plants design and space scales. High walls shelter the garden from the outside world, forming a free and quiet semi-enclosed space. Since smell is the fastest to stimulate the brain, we planted osmanthus, rosemary, citron and other aromatic plants, which will make people calm down and relax themselves physically and mentally. In addition, plants such as hibiscus chrysanthemum, vermicelli, vermicelli, foxtail Asparagopsis and wolftail are added, allowing people to get close to nature and derive great pleasure by touching.

Social Garden: This 50 square meters garden will provide people who need social interaction and emotional bonding with a secure space for communication. The sofas are made to sink, so that the edges of the flower bed form an enclosed space, which will give people a sense of security. At the same time, the fragrance of the surrounding plants will soothe the tension and embarrassment. On the landscape wall, water cascades down, reminding people of the mountain and the waterfall. The sound of the flowing water forms a beautiful melody, which becomes a natural screen from the surrounding noises.

LOCATION

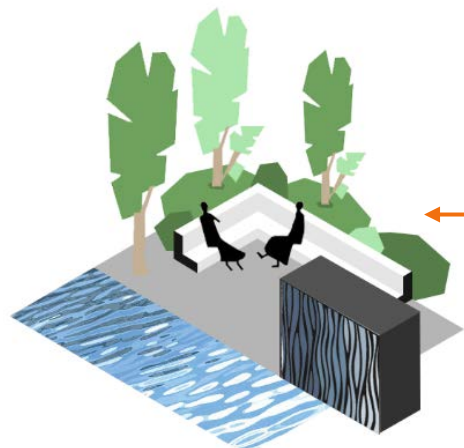
Ink Painting, as one of the brilliant Chinese culture creations, has formed an independent and complete system after thousands of years of development. Enjoying ideal location and natural resources, Yachts Villa, the landscape design of which has abstracted and employed the style and technique of Chinese ink painting, reinterprets this tradition in an innovative way. The design also reflects the real life, shows the national character, and features the characteristics of the times. Against the background of ink-painting-style pavement and well-organized plants, the landscape boasts fully curved surfaces, carefully-selected materials as well as sophisticated techniques. Also, the landscape team took the lead in making recommendations to other specialties, trying to guarantee the integrity and uniqueness of the project.



Chengdu , Sichuan , China



DESIGN CONCEPT



SOCIAL GARDEN

This 50 square meters garden will provide people who need social interaction and emotional bonding with a secure space for communication. The sofas are made to sink, so that the edges of the flower bed form an enclosed space, which will give people a sense of security.

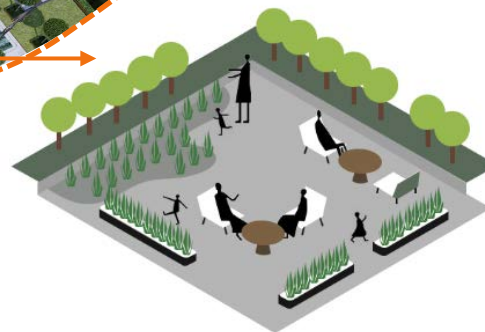


MEDITATION GARDEN

providing meditation space for those who need to be alone and allowing them to gain energy and peace from a quiet environment. We hope the garden will provide a space where people can find peace through meditation. With the concept of “a healing garden”, the space will allow people to relieve stress with pleasant plants design and space scales. High walls shelter the garden from the outside world, forming a free and quiet semi-enclosed space.

URBAN FARM GARDEN

In the future, part of the flower beds in the garden will be used as farmland for children to experience farming. Courses such as plant and insect cognition and farming practice will be organized by the community committee or the property management company. In this way, families with children will gather together and know each other better.



DESIGN CONCEPT

To create a relaxed atmosphere, green plants serve as the background, and a large number of globular plants such as privet, Buxus sinica, hydrangeas and Juncus effusus are employed to bring senses of security and peace.



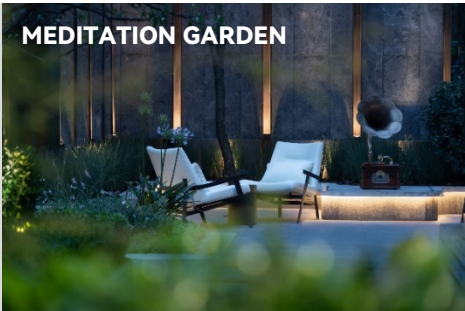
EYE(COLOR)

NOSE(SMELLING)

BODY(FEELING)



Since smell is the fastest to stimulate the brain, we planted osmanthus, rosemary, citron and other aromatic plants, which will make people calm down and relax themselves physically and mentally. In addition, plants such as hibiscus chrysanthemum, vermicelli, vermicelli, foxtail Asparagopsis and wolftail are added, allowing people to get close to nature and derive great pleasure by touching.



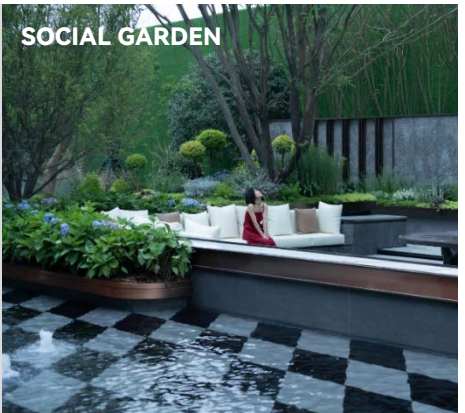
EYE(COLOR)

NOSE(SMELLING)

BODY(FEELING)



On the landscape wall, water cascades down, reminding people of the mountain and the waterfall. The sound of the flowing water forms a beautiful melody, which becomes a natural screen from the surrounding noises.

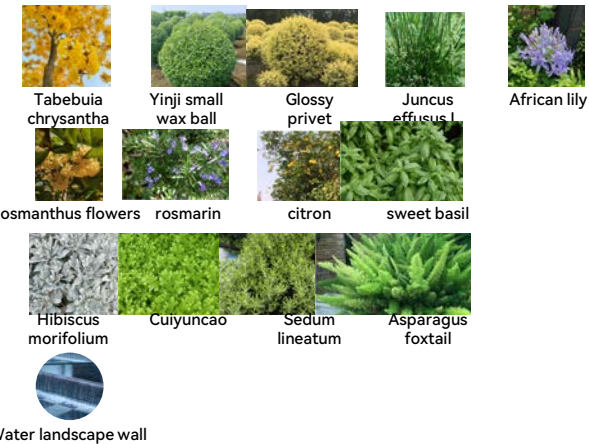


EYE(COLOR)

NOSE(SMELLING)

BODY(FEELING)

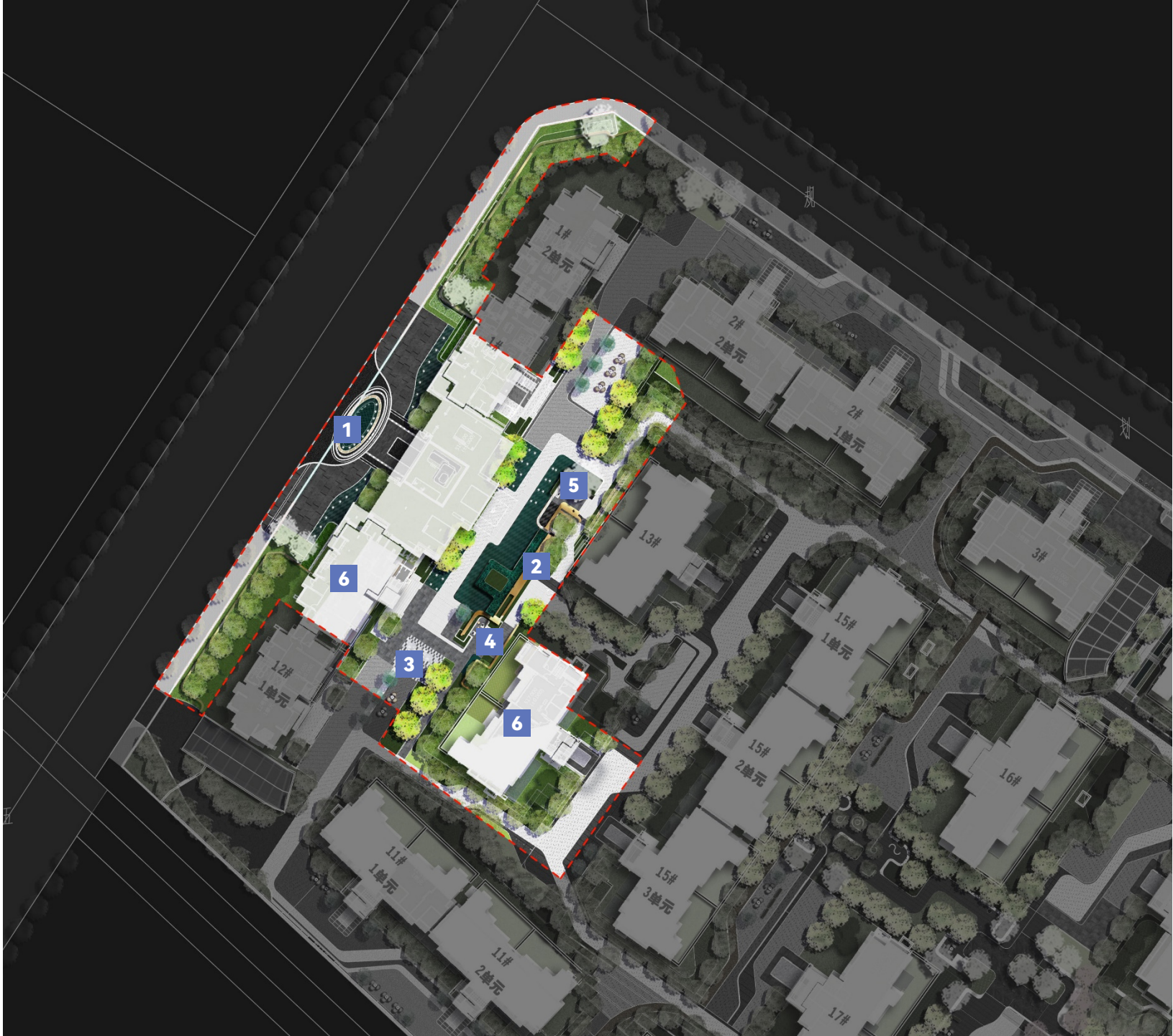
EAR(HEARING)



MASTER PLAN

ANNOTATION NOTES

- 1 Entrance gate
- 2 Scenic Wall Water View
- 3 Urban Farm Garden
- 4 Meditation Garden
- 5 Social Garden
- 6 Residence



PROJECT APPRECIATION

The project is located in jinniu district, Chengdu, Sichuan, China. Its economic strength ranks first in all districts, cities and counties in Chengdu, and it is one of the most prosperous areas in Chengdu. The 42-meter gate at the entrance of the project shows ceremony and dignity, which matches the prosperity of the outside world.

Hotel drop-off entrance, gorgeous waterscape is located in the central axis symmetrical position, focusing on the line of sight. The design hopes to create a fashionable and luxurious external exhibition surface, but after entering the interior, it finds a relaxed environment, and the huge contrast brings more surprises.



PROJECT APPRECIATION

The main axis landscape wall continues some features of the frontcourt, but more plants are added to create a luxurious garden temperament. As the visual focus of the transitional space, the landscape wall not only bears the visual interest of pedestrians, but also links three garden spaces.



PROJECT APPRECIATION

URBAN FARM GARDEN

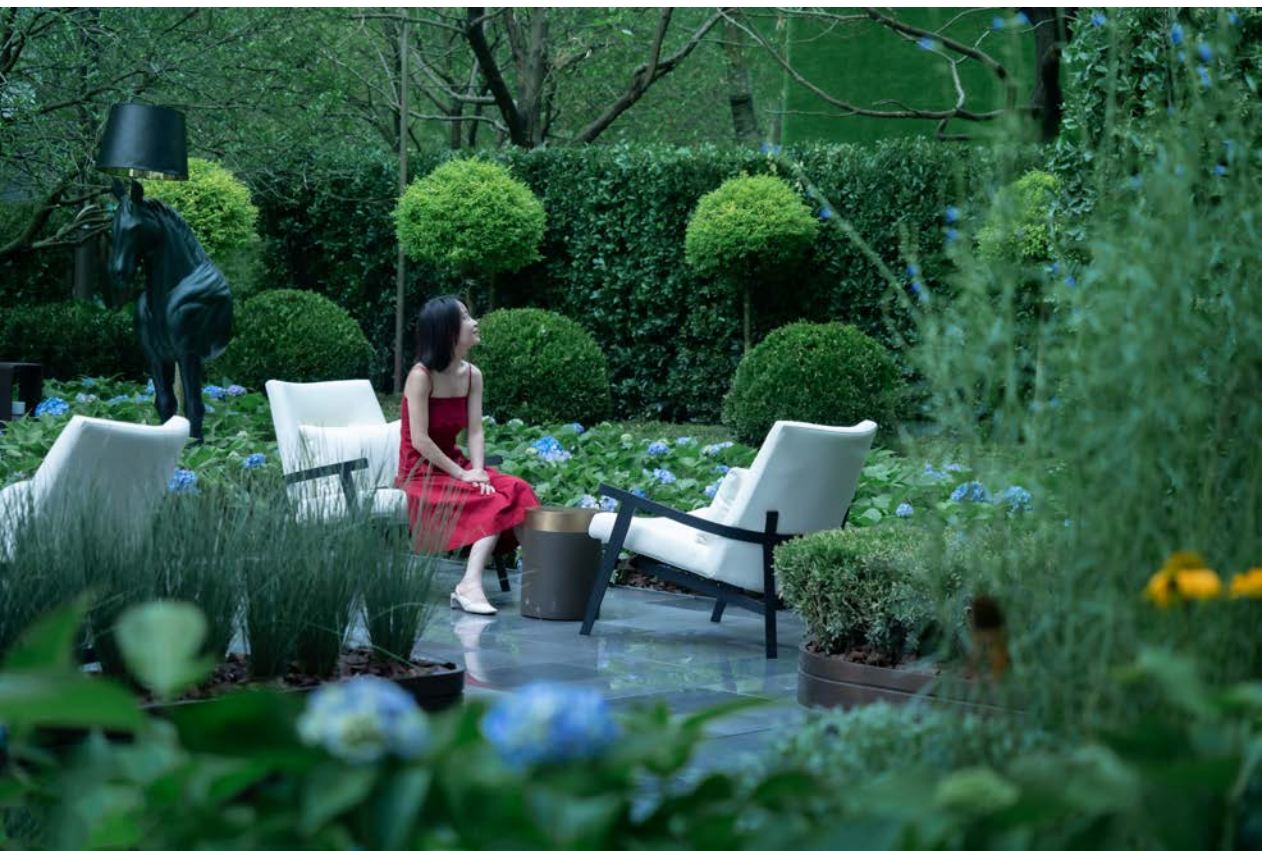


Through children's education, children-centered community families are brought together, so that different families can get to know each other and create a communication scene.



PROJECT APPRECIATION
URBAN FARM GARDEN

The use of green and regular modeling plants brings people a comfortable mood and makes communication begin here.



PROJECT APPRECIATION

MEDITATION GARDEN

Providing meditation space for those who need to be alone and allowing them to gain energy and peace from a quiet environment.



PROJECT APPRECIATION

MEDITATION GARDEN

Aromatic plants and plants with special hand feel are distributed in the senses, which makes people feel pleasant stimulation in the sense of smell and touch and produces a calm and comfortable response.



PROJECT APPRECIATION

SOCIAL GARDEN

The sofas are made to sink, so that the edges of the flower bed form an enclosed space, which will give people a sense of security.



PROJECT APPRECIATION

SOCIAL GARDEN

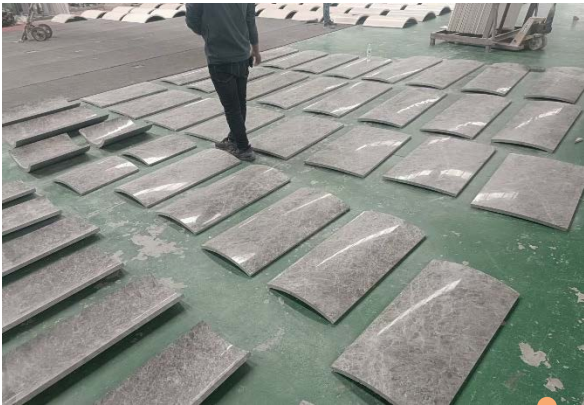
Add a scene space with interactive participation and experience. The sound of running water on the wall simulates waterfalls in nature, while shielding the noise inside and outside, making the conversation between people in the garden more pure.



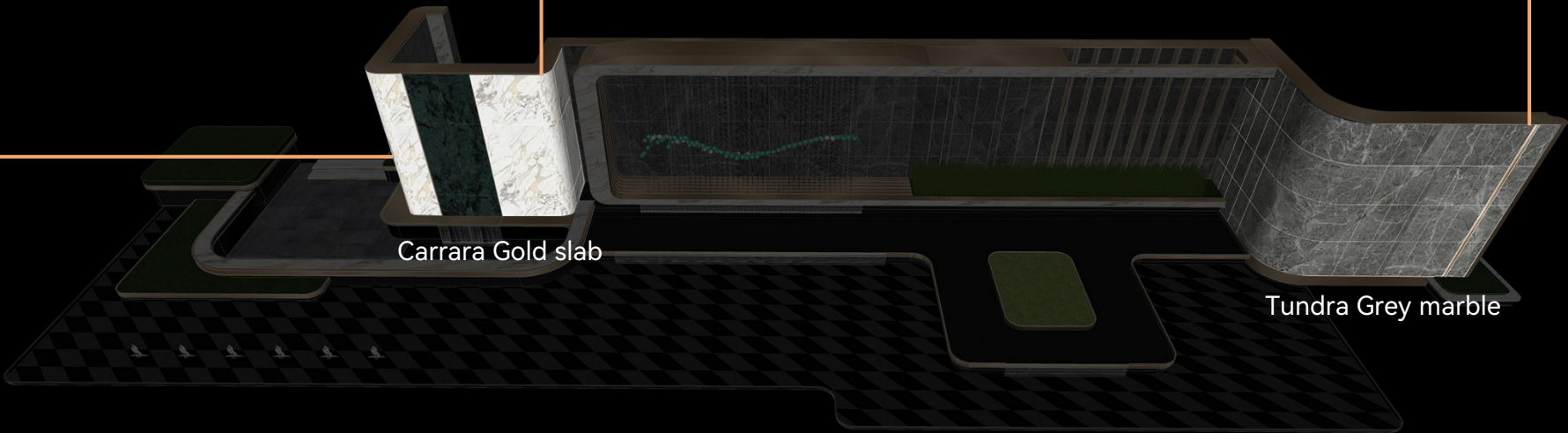
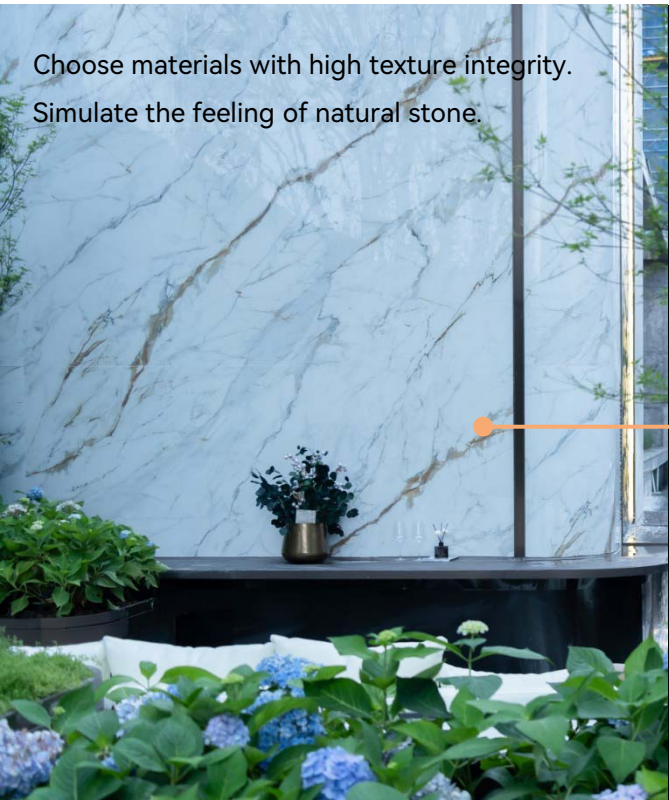
CONSTRUCTION TECHNOLOGY

The landscape walls are designed with rounded corners. To present a complete curved surface without traces of collage, Tundra Grey marble is selected and cut and processed into an arc. And considering durability for outdoor use, the surface is crystallized to increase its weather resistance. The white facing is made of carefully selected Carrara Gold slabs to ensure the uniformity and continuity of the texture.

Construction process-typesetting in advance



Choose materials with high texture integrity.
Simulate the feeling of natural stone.



Carrara Gold slab

Tundra Grey marble

CONSTRUCTION TECHNOLOGY

The eave of the waterscape is carefully designed and adjusted based on on-site simulation of cascade to ensure the best visual and auditory effect. Finally, the cornice size with a protruding part width of 2 cm and a recessed part width of 1 cm was selected.



Width of protruding part: 3 cm
Width of concave part: 1cm
Irregular running water, dry per share.



Width of protruding part: 3 cm
Width of concave part: 1.5cm
Irregular running water, dry per share.



Width of protruding part: 2 cm
Width of concave part: 1cm
Regular flow, full per share



To moderate the splash caused by height difference, the first-level facade is inclined to make the water slide down the wall; at the bottom, the deep concave metal water tank serves as a buffer against the water pressure, which controls the flow and sound of the water. When the tank is full, it overflows, forming the cascade.

