

Longtang Wet Lake Wetland Park, Chongqing , China

Project Statement

Chongqing Longtang Lake Wet Wetland Park is a landscape renovation project. Prior to the renovation, it lacked the vitality required for an urban public space, and due to the long-term lack of maintenance and operation, it was in a state of disrepair and old age, unable to provide an interesting and ecological park space for the surrounding citizens.

Landscape designers utilized the height difference of the original site and the open water to create nearly 10,000 square meters of children's play space, providing a place for children to play outdoors, which became the core attraction of the park. The characteristic play space and rich interactive scene experience greatly increase the park's vitality. It creates a fun-filled, ecological, child-friendly activity place for residents of the surrounding community, realizing social benefits and public value.

Project Narrative

Longtang wetland Park is located in the Lijia area of Chongqing, adjacent to Longfor commercial street. Through the pre-project research, we summarized the current situation of the field as follows.

First, the accessibility of the park is poor, and the entrance is weak. Inside the park, the main activity areas are connected by a running track around the lake, with large height difference between inside and outside, and low convenience; Second, the water area in the park accounts for 1/3 of the total area, but the hydrophilicity of the lake is weak, and the content of the activities is single; Third, the park lacks of thematicity in the various functional subdivisions of the park, and it only meets the basic needs of rest, and it lacks the thematic characteristics and the space for the activities that are attractive to the people. Based on the above status quo, the park, despite covering an area of 19 hectares, has a small service area and weak flexibility. In response to this, we have targeted the following aspects of landscape renovation and upgrading.

1. Shape the differentiation from the neighboring parks on the basis of the original vertical and functional relationships.

The Park has a large area, with natural resources such as Longtang Reservoir, woodland, slope, etc., and the site originally contains different themes and functional zones, which is a natural advantage for shaping a mountain children's park with strong functionality and participation, and also leads to the differentiated positioning of the project as "children's outdoor space for playing games and a mountain park for recreation and sports".

2.Mountain-inspired children's theme areas become the park's core attraction

Children's play is concentrated in the north side and east side, the north side uses the height difference to form interesting hill beach park and interesting shallow water park, the east side is the largest children's play area, through the energetic circle big climbing net, all kinds of fun swings, extra-long hill slides, exciting skateboarding park, huge circle theater and other children's facilities will be the wetland, the hill, skateboarding three major theme parks in series into an exploration of the fun of the path of play.

3.Adding space types to expand the radius of park services from the neighborhood to the city level

On top of the original functional structure of the park, the theme of each area is adjusted and upgraded to extend five major theme areas including beach play, wetland recreation, mountain sports, lakeshore loop and bazaar cloud corridor. Emphasis is placed on public participation to gather popularity and drive regional social and economic development.

4.Optimize the barge, increase the waterfront space of the trestle, and enhance the hydrophilicity of the landscape

The water area of Longtang Reservoir is more than 50,000m², we retained the original ecological wetland function of the lake and upgraded it, such as purifying the water, upgrading the plant regulation, optimizing the barge, and the water-friendly grandstand, to enhance the hydrophilicity of the landscape.



The park before the renovation had a small catchment area and weak spatial flexibility, despite its 19-hectare size.



Landscape site plan.



Mountain-inspired children' s theme areas become the park' s core attraction.



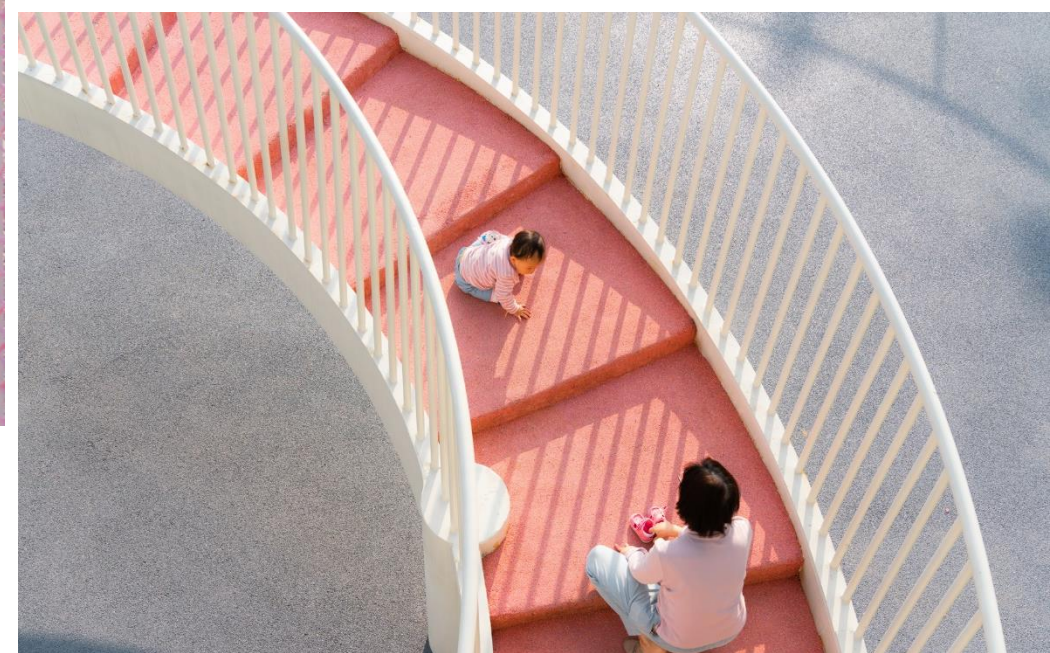
Main entrance.



Overall view of the mountain park.



The circumference of the circular climbing net in the mountain park is about 95m, with a climbing net on top and a swing below.



Details of the crawl net.



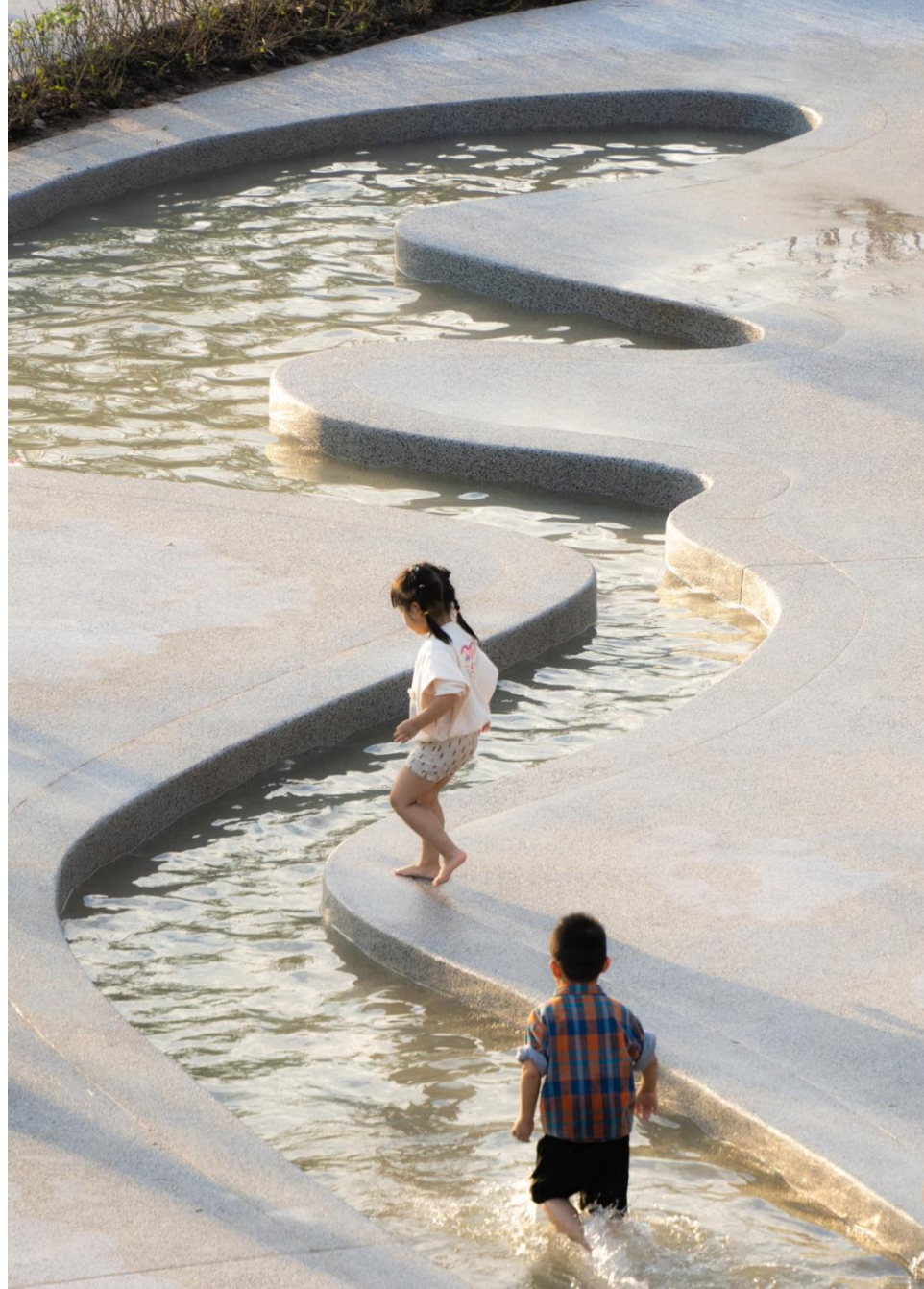
Overall view of the skate park.



People having fun at the skate park.



Water enjoyment park .



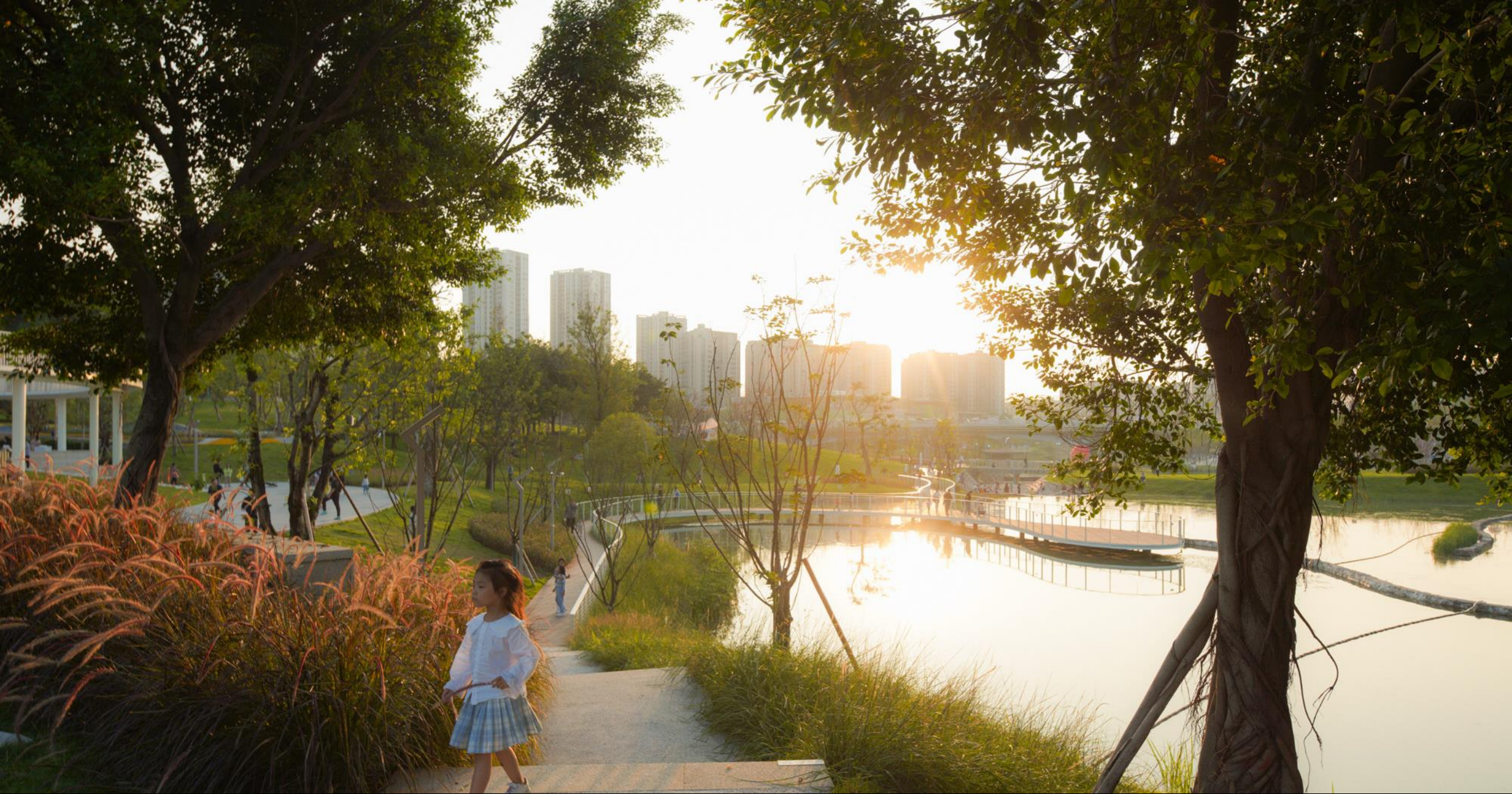
Water enjoyment park, The childrens' summer paradise.



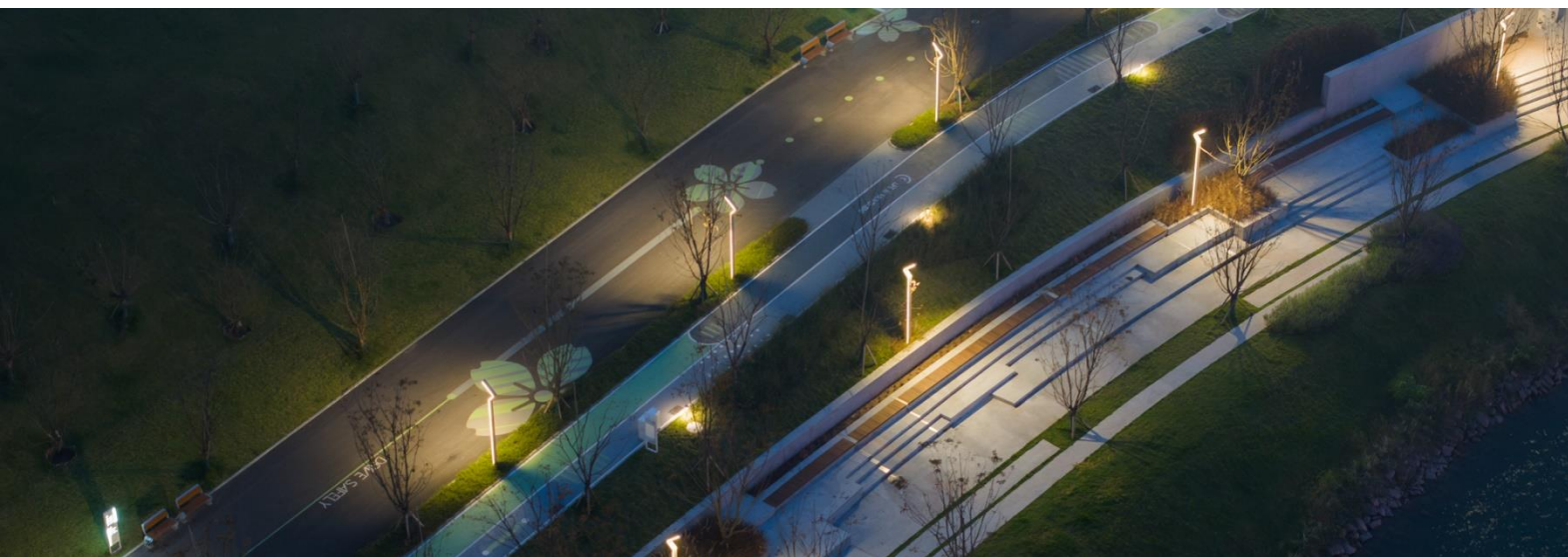
Fun and wacky slope and children' s beach area .



Landscape details of wacky slope area.



Preserved the original ecological wetland function of the lake.



In addition to the function of children' s play, Longtang Lake also includes wetland recreation, lakefront ring road and other functions.



Linkage with commercial, park and commercial veins are connected.