

Q: What is Hybris? = Enterprise multichannel e-commerce & product content management (PCM) software.

Q: What are the different eCommerce Solutions? =

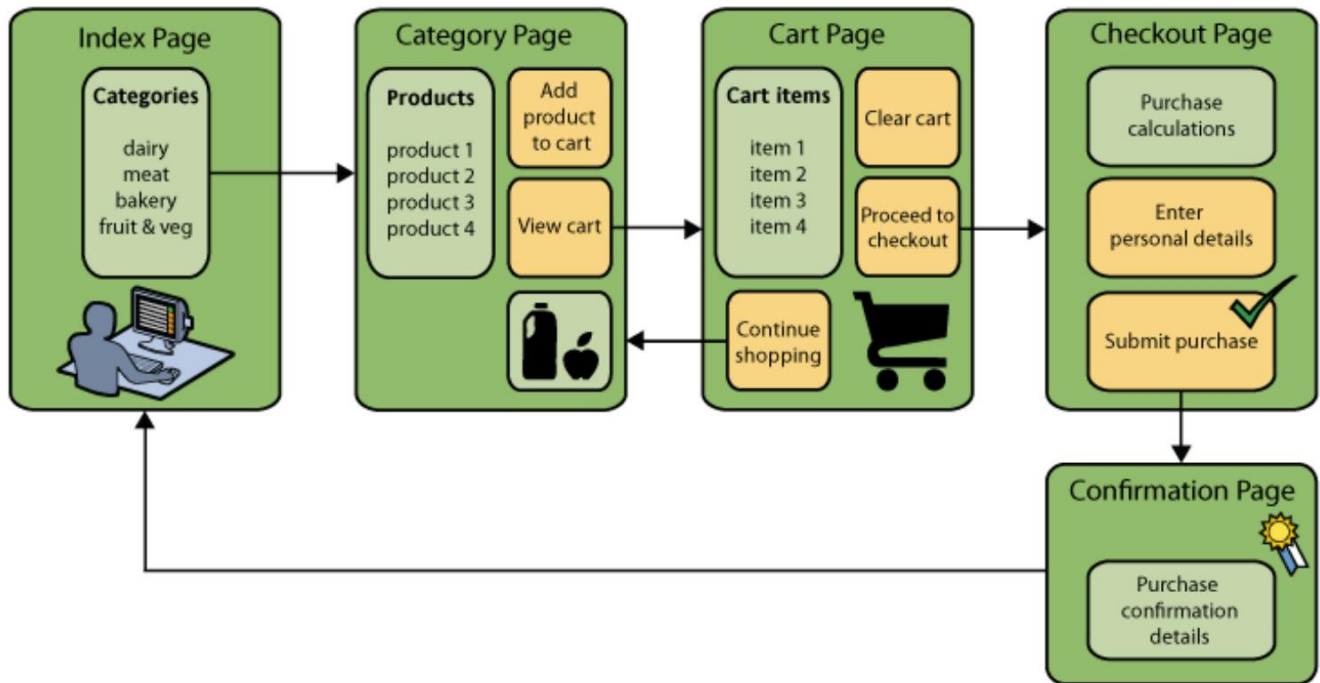
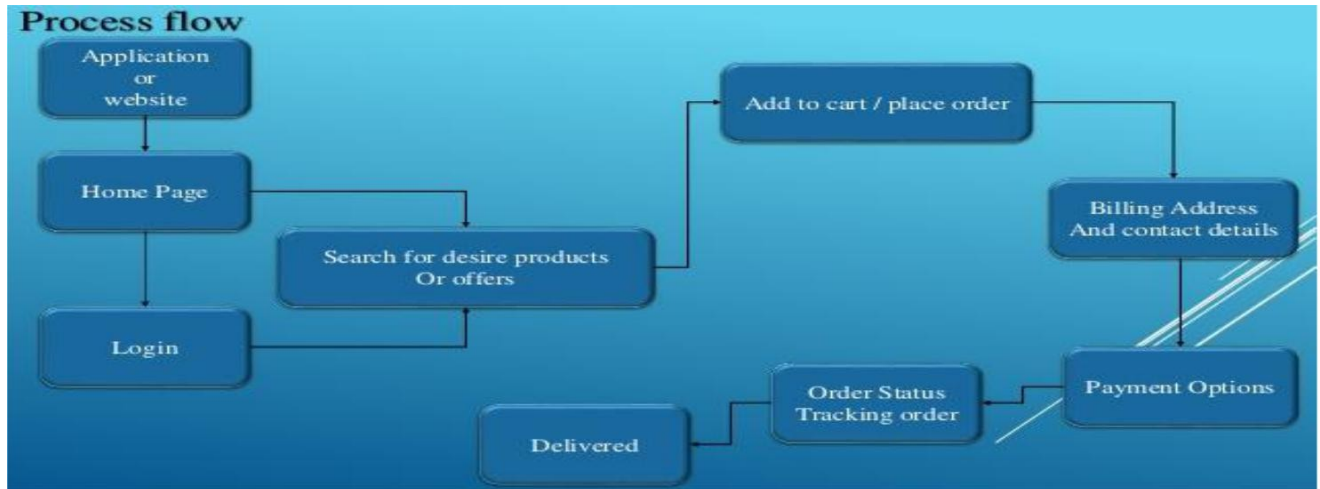
SAP - Hybris, Oracle - ATG, IBM -- WebS.Com, Open Source - Magento, and

Q: What is eCommence? = Buying & selling of products and services by businesses or consumers over the WWW.

E-Commerce Classifications =

- (1) B2B (McMaster, Fastena, **Dell**) = Companies doing business with each other
- (2) B2C (Flipkart/Amazon/**Dell**) = **Businesses** selling to public without human interaction (through s/w)
- (3) C2B (Elance.com) = **Consumers** post a project online, companies bid the project. Consumer reviews & selects the company.
- (4) C2C (Olx.com, eBay) = Place ADS online where individuals can buy and sell their goods
- (5) Business-to-Administration (B2A) (Social Security) = All transactions conducted online between companies and public administration.
- (6) Consumer-to-Administration (C2A) (Education, Taxes, Health) = All electronic transactions between individuals and public administration.

eCommerce Flow: -



Benefits with E-Commerce?

- Reduced Cost/Labor/Paper work/Errors in keying/Time
- Improved market analysis
- Lock in Customers.
- Instant worldwide availability
- Flexibility with efficiency
- New Markets.

Drawbacks of e-Commerce?

- Confidentiality issues
- Security issues
- Taxation issues
- Trust issues
- Credit card fraud
- Round-the-clock availability

What are the "Features on an E-Commerce Site"?

- Search Box
- Newsletter Subscription
- Good Navigation
- Good Return Policy
- Delivery Information
- Live Chat
- Shopping Cart
- Contact Information
- Catalogs & Products
- Customers & Orders
- Quality Images
- Product Zoom
- Good Payment Gateway
- Customer login & Registration
- News & Events
- Product Demos
- Business Logo
- Responsible Design
- Storefront
- Reporting
- Related Product
- Categories
- Privacy Policy
- Good Graphics
- Reviews
- Email a Friend Button
- Deals, Offers, Free
 - Loyalty Program
 - Pages & Blogs
- Taxes & Locations

Q: What are the Hybris Product Family?



Why only Hybris?

- (1) **Leader** -- Hybris is rated a Leader in digital commerce software
- (2) Speed of the Front Office (Customer web page rendering) / Back Office Work (**Cockpits**)
- (3) **Scale Up** -- Hybris is built on robust, agile and open Architecture and Technology
- (4) **Go Live Fast** -- Kick-start project in few months with Hybris Commerce Accelerator. Omni-Channel solutions are pre-configured for B2C and B2B, and for specific regions and industry
- (5) Advanced catalog management (**PIM, multi catalog**, attributes, bundles, etc.)
- (6) **Go Where Your Customers Are** -- Engage customers contextually & consistently across every touchpoint through our Omni-Channel offering
- (7) Multi / cross / **Omni channel** capabilities
- (8) **Take On the World** -- Go multi-site, multi-region and multi-currency with internationalization options embedded in our commerce software
- (9) **Be Flexible** -- Deploy our commerce software on premise, on demand, or as a managed service