

# Chrome Direct Print User Manual

## **Introduction**

“Chrome Direct Print” enables silent print to multiple printers without PDF download or user confirmation.



## **Chrome Direct Print**

### **Printer Options**

Type:  Designated Printer:

Type ▲	Printer ▲	Remove ▼
INVOICE	Brother DCP-7060D Printer	<a href="#">Remove</a>
LABEL	CutePDF Writer	<a href="#">Remove</a>
RECEIPT	Microsoft XPS Document Writer	<a href="#">Remove</a>

If designated printer not selected for specific format, Windows default printer will be used.

## **System Requirement**

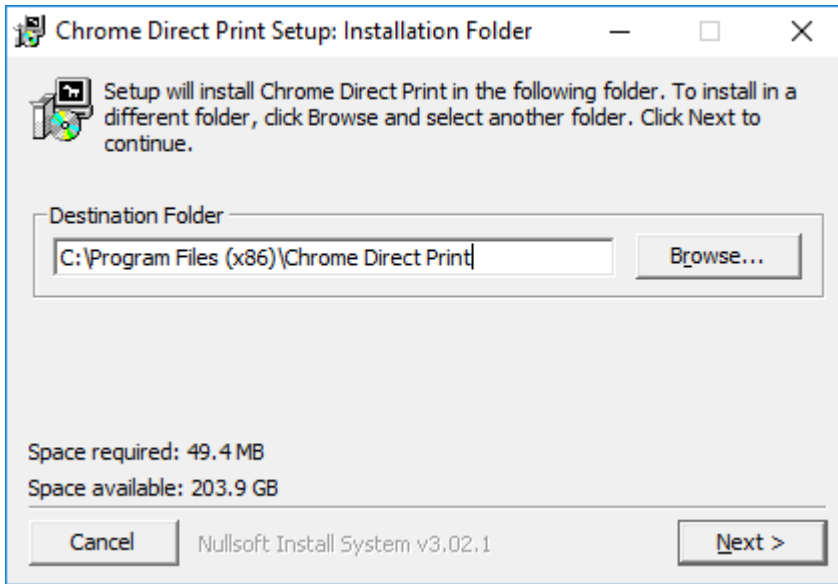
- Windows Vista or higher
- Intel Core i3 or equivalent
- 2GB of RAM
- Internet/Intranet Access to Web App
- Google Chrome 28 or later

## **Document Version**

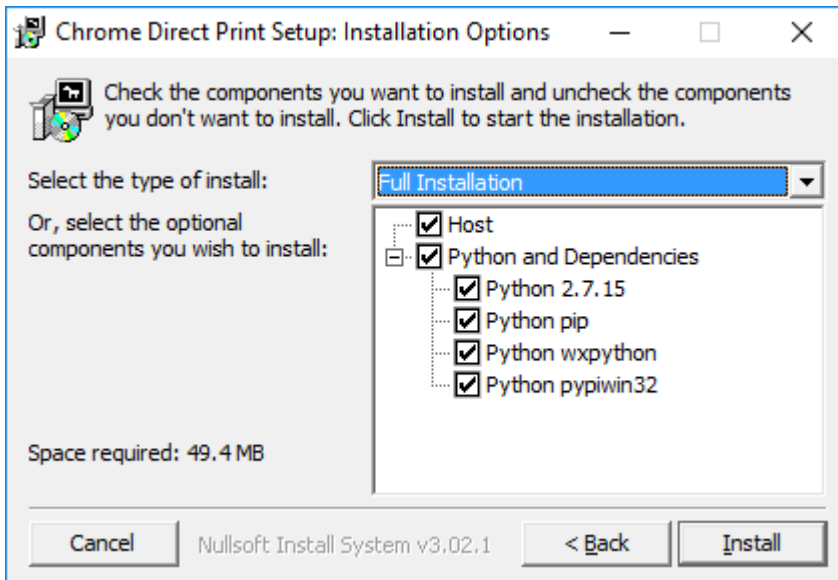
2.0.0 (2018-09-09)

## Installation

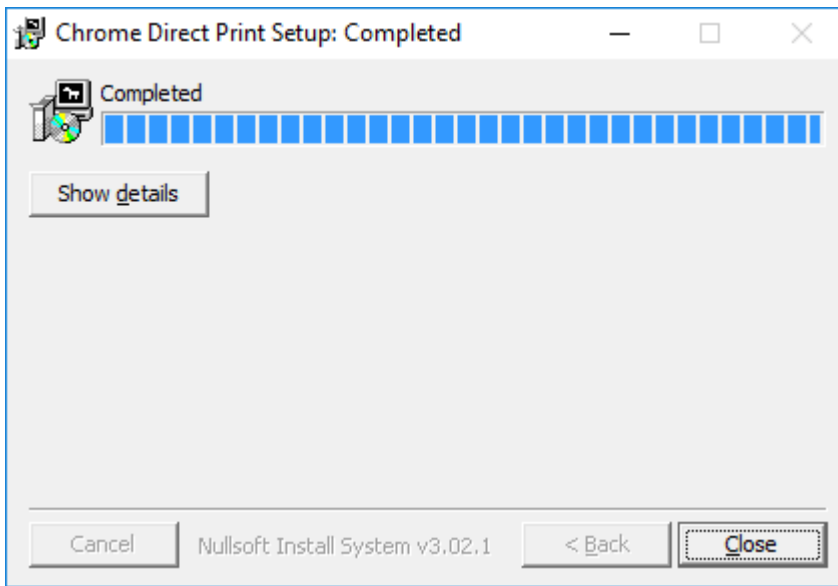
1. Launch Setup executable



2. Click "Next >"



- For new installation, choose "Full Installation".  
For upgrade, choose "Host Only"  
And click "Install", wait until installation complete, click "Close"



- Launch "Chrome", go to <https://chrome.google.com/webstore/detail/chrome-hardware-bridge/fnfkcaeloalplnglklappfjjeafakeo> and install "Chrome Direct Print" extension.
- Click "Options" on "Chrome Direct Print". Check if "Host Version" is shown correctly.  
Add printer mapping as needed.  
Enter "Type" according to your project setup.



## Chrome Direct Print

### Printer Options

Type:  Designated Printer:

Type	Printer	
INVOICE	Brother DCP-7060D Printer	<a href="#">Remove</a>
LABEL	CutePDF Writer	<a href="#">Remove</a>
RECEIPT	Microsoft XPS Document Writer	<a href="#">Remove</a>

If designated printer not selected for specific format, Windows default printer will be used.

- Setup completed.