

Patented
Carbon Block CBTECH

NanoMeshTM

Chemical & biological
Water purification
Solutions



- Introducing World's best POU (Point of Use) zero waste drinking water purification solutions. Conforming to NSF standards and exceeding USEPA standards.
- Removes **Arsenic III & V**, Heavy metals, Mercury, Lead and all other harmful chemicals.
- Removes sediments, chlorine, TOCs (Total Organic Carbons), bad taste and odours.

Ensuring complete Hydration and Essential Mineral intake

NanoMeshTM

NanoMeshTM water purification solutions

We proudly present the world's first Nano-technology based carbon block NanoMesh filtration system.

NanomeshTM equals custom-manufactured, worry-free microbiological removal. Unlike alternative water purification technologies, Nanomesh is neither constrained by power requirements nor compromised by the need for additional chemical additives. Instead, Nanomesh utilizes patented technology to enhance its already formidable carbon block, allowing for up to 6-factor purification of viruses, bacteria, and cysts.

The NanomeshTM filtration system is a commercial solution which evolved as a result of extensive research done by NASA and stake holders in various applications in diverse locations including the International Space Station.

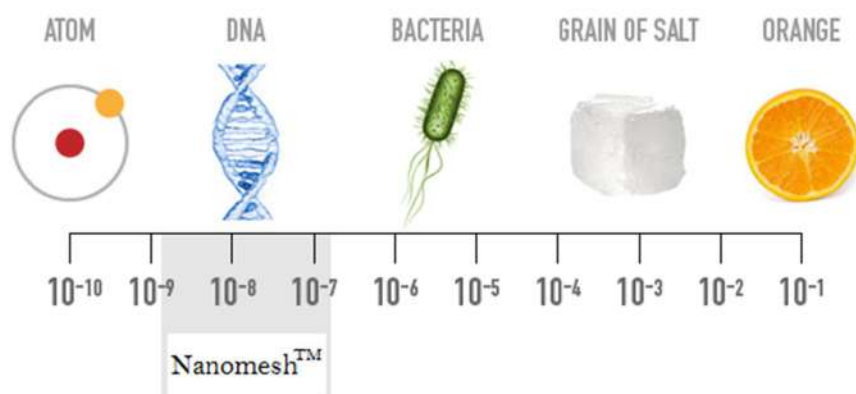


NanoMeshTM Properties:

- Microbial purification
- Reduction of all major contaminants (arsenic, heavy metals, pesticides, etc.)
- Water Retains Healthy Minerals
- No Disinfection by-products/DBPs (THMs, HAAs)
- No chemicals
- No power needed,
- Zero wastage of water
- No waiting
- Handles highly contaminated water

The Science

The NanoMeshTM is created by precisely manipulating atoms and molecules for fabrication of macroscale products. Dealing with dimensions and tolerances of less than 100 nanometres.

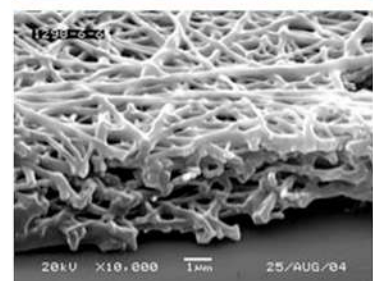
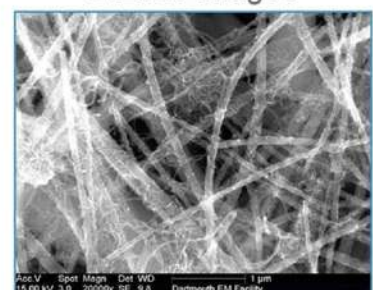


How It works!

- It has Small diameter
- less pressure drop
- Vast surface area
- More porosity
- Able to functionalize with many materials
- Easy to incorporate into filter media.

It purifies the water through mechanical filtration, physiochemical and electrochemical adsorption.

S.E.M. Images



Our **POU Systems**

We offer complete water filtration and purification systems with the following:

- Pure, mineral rich and healthy drinking water
- Zero Wastage
- 100% recyclable
- *Purifies from any source
- Microbial purification
- Reduction of other contaminants (metals, pesticides, etc.)
- No chemicals
- Can be run on gravity
- Can be also run on solar power and off grid locations.
- Handles highly contaminated water
- Mobile or static solutions
- Scalable and customizable as required.
- Manufactured with only Food grade material.
- No additional UV or UF equipments required

USES ANY SOURCE OF WATER. EVEN GREY WATER TO CONVERT TO PURE DRINKING WATER.



100-150 LPH



250-500 LPH



2500-5000 LPH

*No desalination. Sea water cannot be processed.



BSSWPE **Water Purification Equipment** **WaterBoxTM**

The WaterBox is fast, portable, easy-to-use, dependable and cost effective. It delivers pure, great tasting water in remote locations without the use of chemicals or heat. It is tested to and compliant with NSF P248 standards.

- Lightweight, rugged casing and freeze damage resistant components ensure long service life
- Setup is less than five minutes with immediate purification using no chemicals and delivering no wastewater
- Hoses and cartridges are easy to clean and replace Multi voltage power supply options adaptable to any field situation



BSSWPE **Water Purification Equipment** **WaterTapTM 100 -150 LPH**

- Lifetime product
(requires only filter change, when water flow starts reducing)
- Multi-stage in-line filter system
- Simple design & Easy installation.
- Immediate availability of pure drinking water.
- Requires no maintenance, no chemicals, no storage tank and no electricity.
- No waste-water is generated as a result of the purification process.
- Essential minerals are retained in the water.
- Zero wastage, No back-wash.

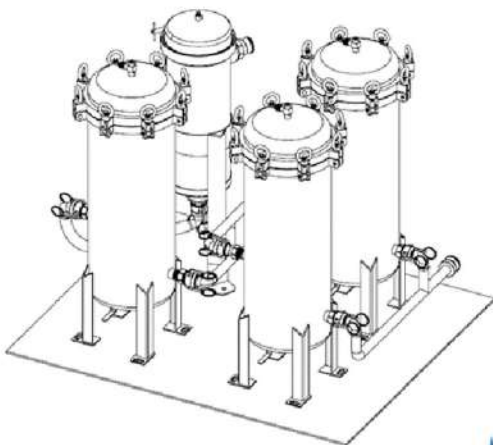


BSSWPE **Water Purification Equipment** **WaterTapTM 250-500 LPH**

- Lifetime product
(requires only filter change, when water flow starts reducing)
- Multi-stage in-line filter system with power efficient water pump.
- Simple design providing Portability and Easy installation.
- Immediate availability of pure drinking water.
- Requires no maintenance, no chemicals, no storage tank.
- No waste-water is generated as a result of the purification process.
- Essential minerals are retained in the water.
- Zero wastage, No back-wash.



BSSWPE **Water Purification Equipment** **WaterStationTM** **2500-5000LPH**



- Multi-stage in-line filter system
- Immediate availability of pure drinking water.
- No chemicals, No storage tank.
- Essential minerals are retained in the water.
- Zero wastage, No back-wash.
- Built-in smart grid technology - Can be operated via internet with IoT (Internet of things).

Height : 52" | Foot print : 40"x48" | Dry weight : 158 Kg | Flowrate : 2500 LPH (minimum)

Replacement

Filters

CB Tech NanoMeshTM filter cartridges provide the most efficient filter performance possible. The filters combine the highest quality, FDA-compliant raw materials with cutting-edge manufacturing methods resulting in unequaled performance.



CBTAD Filter



CBTAs Filter



CBTVOC Filter

The Carbon Block filters utilize a combination of mechanical filtration, electrokinetic adsorption, and physical/chemical adsorption to reduce a wide range of contaminants of health concern.

The replacement filters have been tested and certified to reduce Arsenic, chlorine, chloramine, tastes and odors, particulate matter, as well as cysts, VOCs, MTBE, trihalomethanes, heavy metals (lead, mercury) turbidity, certain pesticides and asbestos.

NanoMesh

Testing and certificates



Biological:

- Yale University • Stanford University • Seldon Nanotechnologies

Chemical:

- Lawrence Livermore National Laboratory • Chinese Academy of Sciences and Tsinghua University

NSF International Certified - The Public Health and Safety Organization which conducts product testing, inspection and certification.

CBtech is one of few companies that is NSF certified to reduce such a wide array of drinking water contaminants, including such classes as disinfection byproducts or gasoline additives – contaminants that can get into water sources through pollution or leaks.

- NSF/ANSI P231, P248 - Microbiological Water Purifiers
- NSF/ANSI 42 - Drinking Water Treatment Units - Aesthetic Effects
- NSF/ANSI 53 - Drinking Water Treatment Units - Health Effects
- NSF/ANSI 401 - Drinking Water Treatment Units - Emerging Compounds/Incidental Contaminants.

Contact:

BSS Materiel Limited (WPE Division)
Bharat Supply and Support of Military Materials & Equipment
email@bssm.limited www.bssm.limited
Fax # +91 (011) 47591576