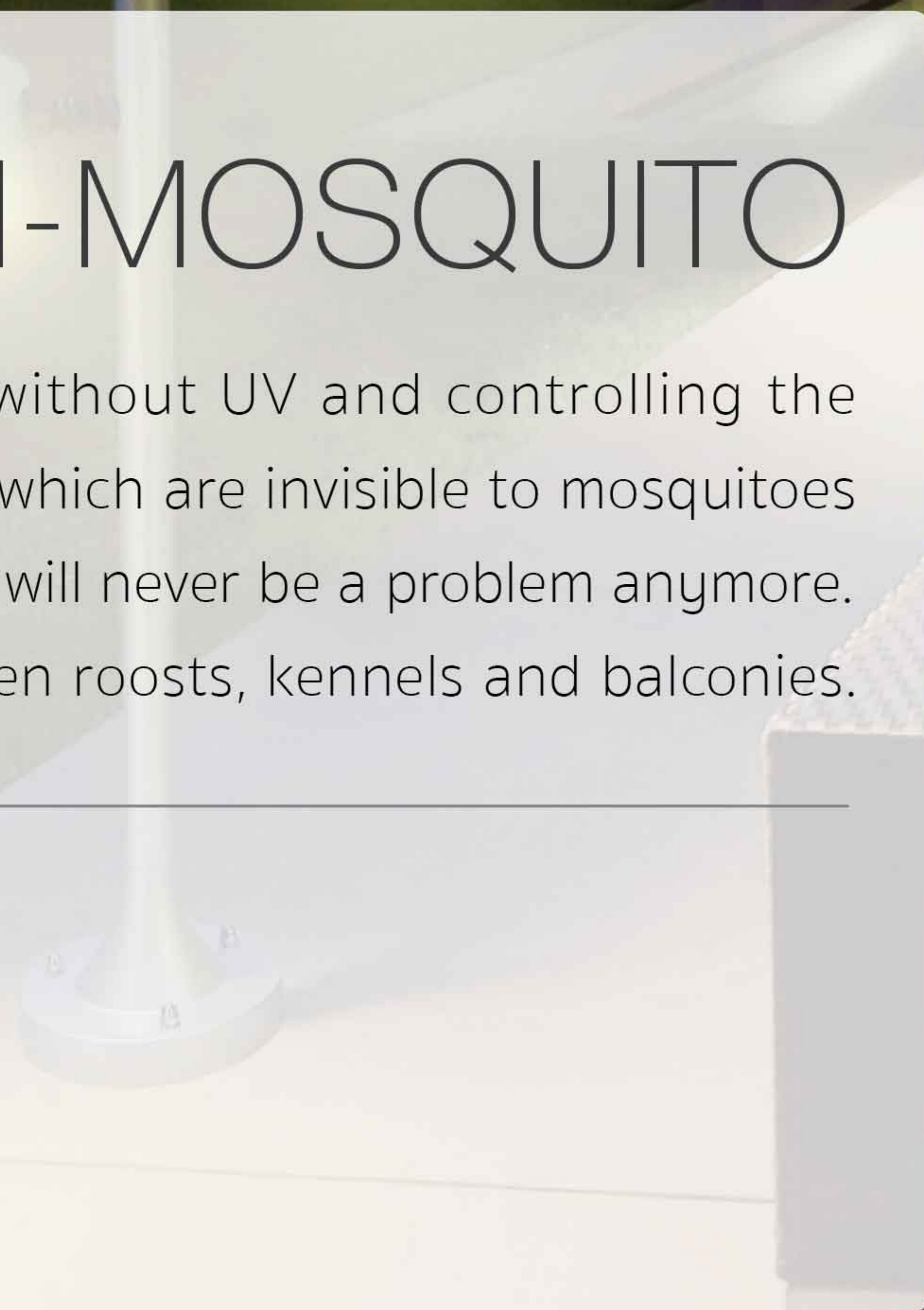


LED ANTI-MOSQUITO

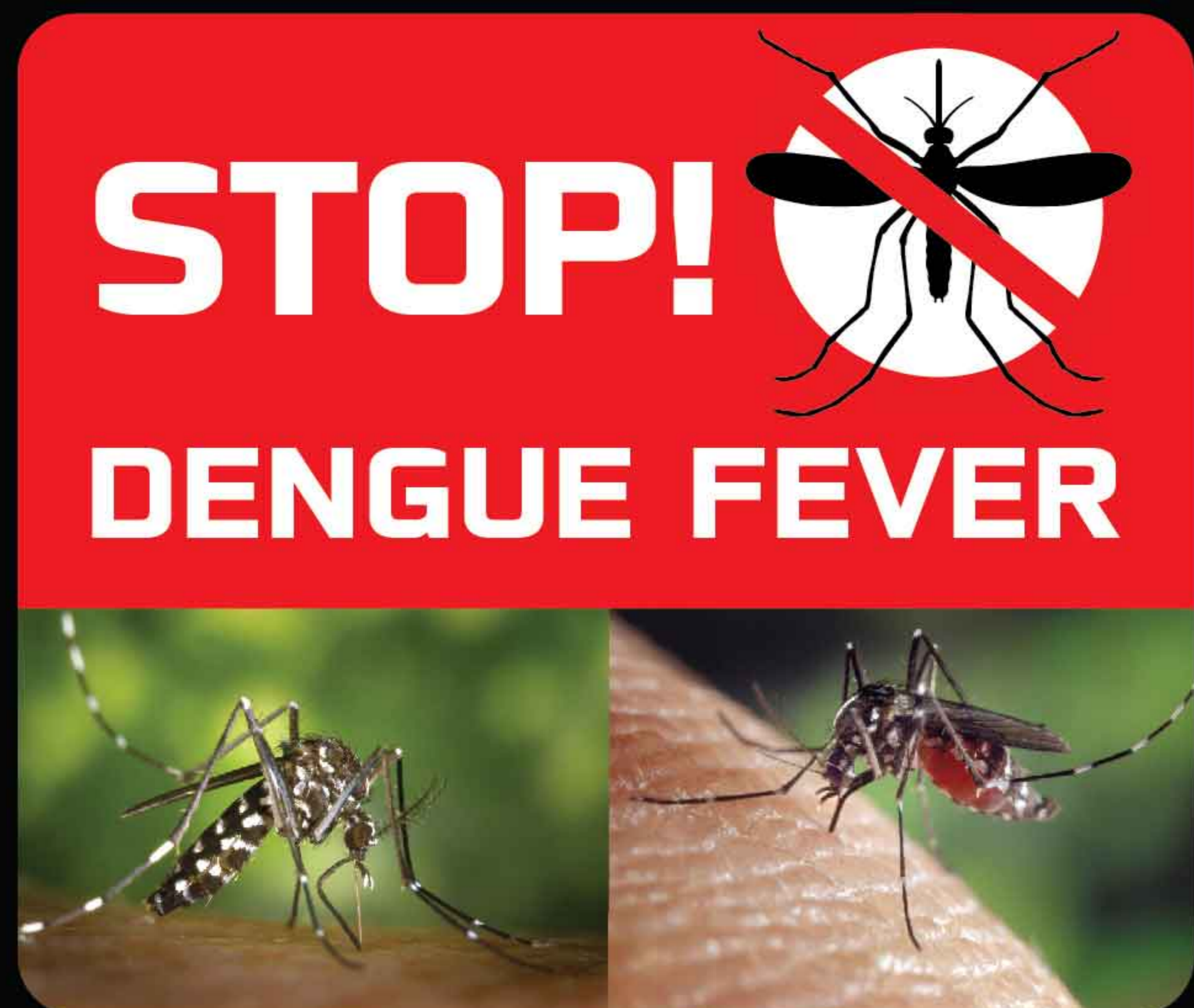
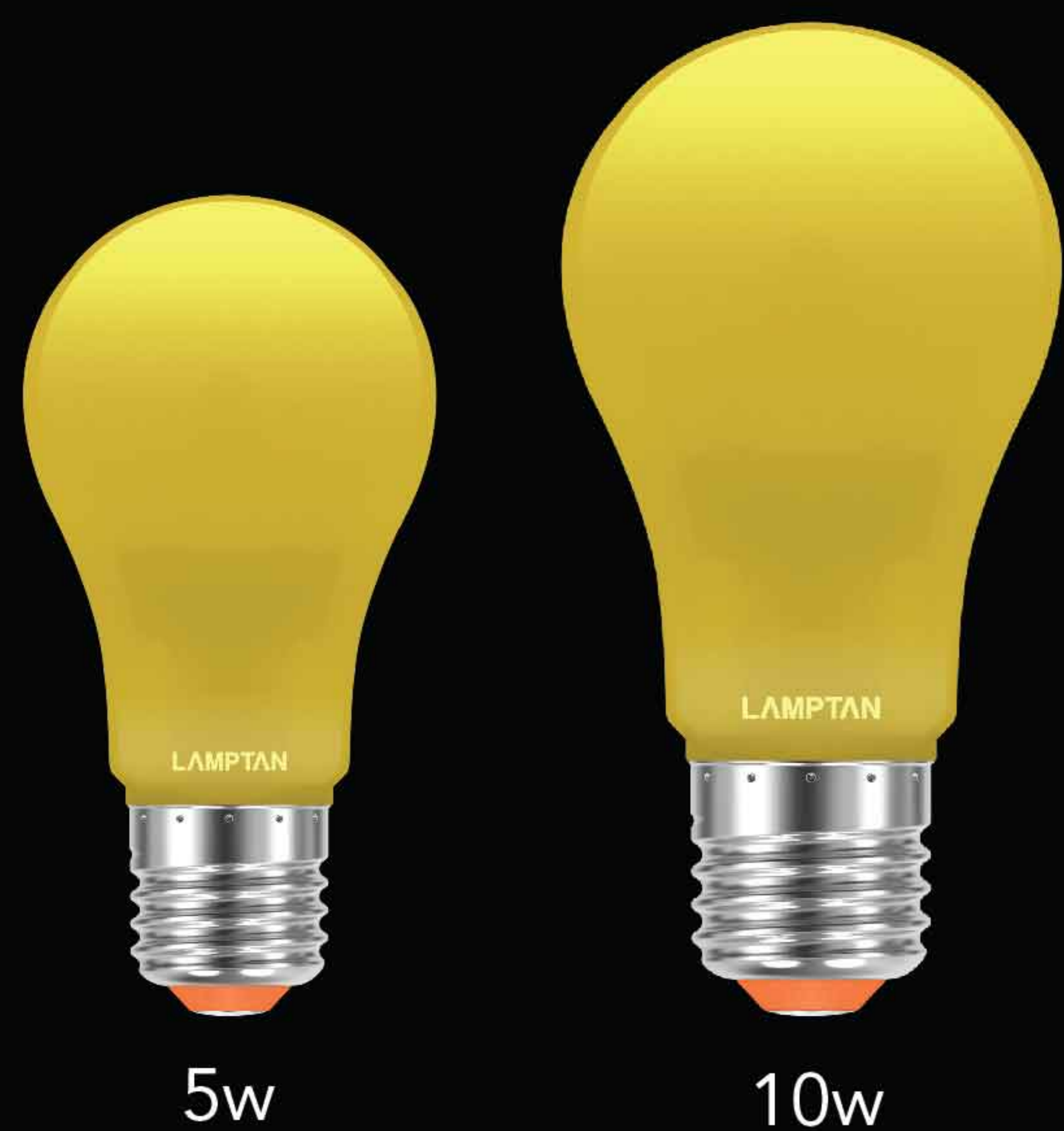


LED ANTI-MOSQUITO

With it emitting light without UV and controlling the light wave in the range which are invisible to mosquitoes and insects, these pests will never be a problem anymore. Perfect for farms, chicken roosts, kennels and balconies.



LAMPTAN



LED ANTI-MOSQUITO and others



LED ANTI-MOSQUITO SWITCH

LED U-TYPE ANTI-MOSQUITO

LED SPIRAL ANTI-MOSQUITO

Rate (W)	Voltage(V) Frequency(Hz)	Flux (lm)	Colour	Colour Temp (K)	RA	Power Factor	Beam Angle (degree)	Lifetime (hours)	Lamp Base	IP	Driver	Dimension (w x l x h : mm.)	Weight (g)	Package size (pieces : mm.)
5	220-240 50/60Hz	580	Anti-Mosquito	1800	-	>0.5	270	20000	E27	-	-	55x55x108	41.48	1pc : 57x57x118 10pcs : 120x291x126 100pcs : 297x606x260
10	220-240 50/60Hz	640	Anti-Mosquito	1800	-	>0.5	270	20000	E27	-	-	60x60x110	44.68	1pc : 62x62x120 10pcs : 130x316x128 100pcs : 322x656x264