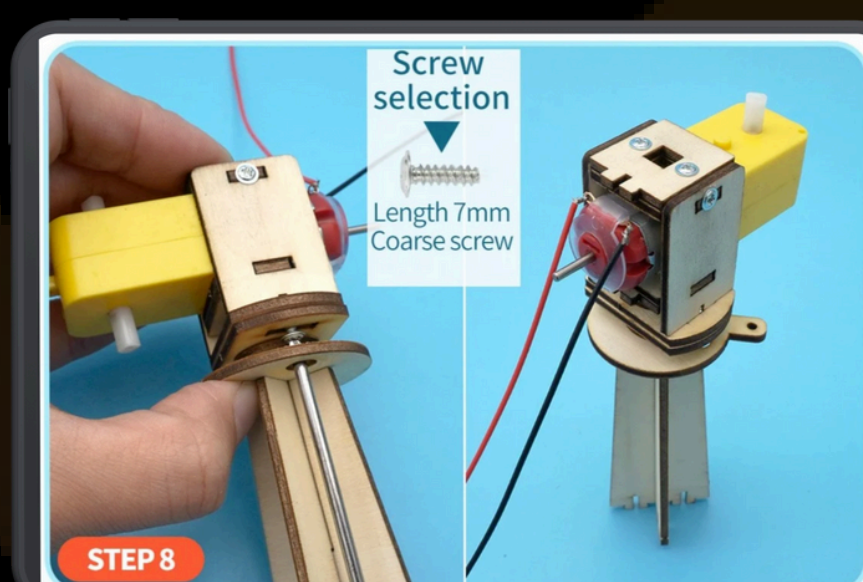
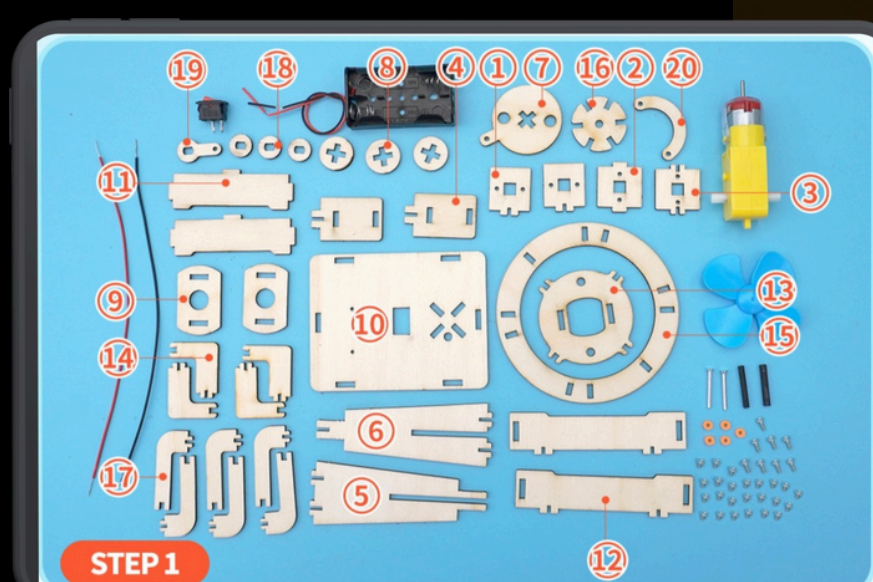
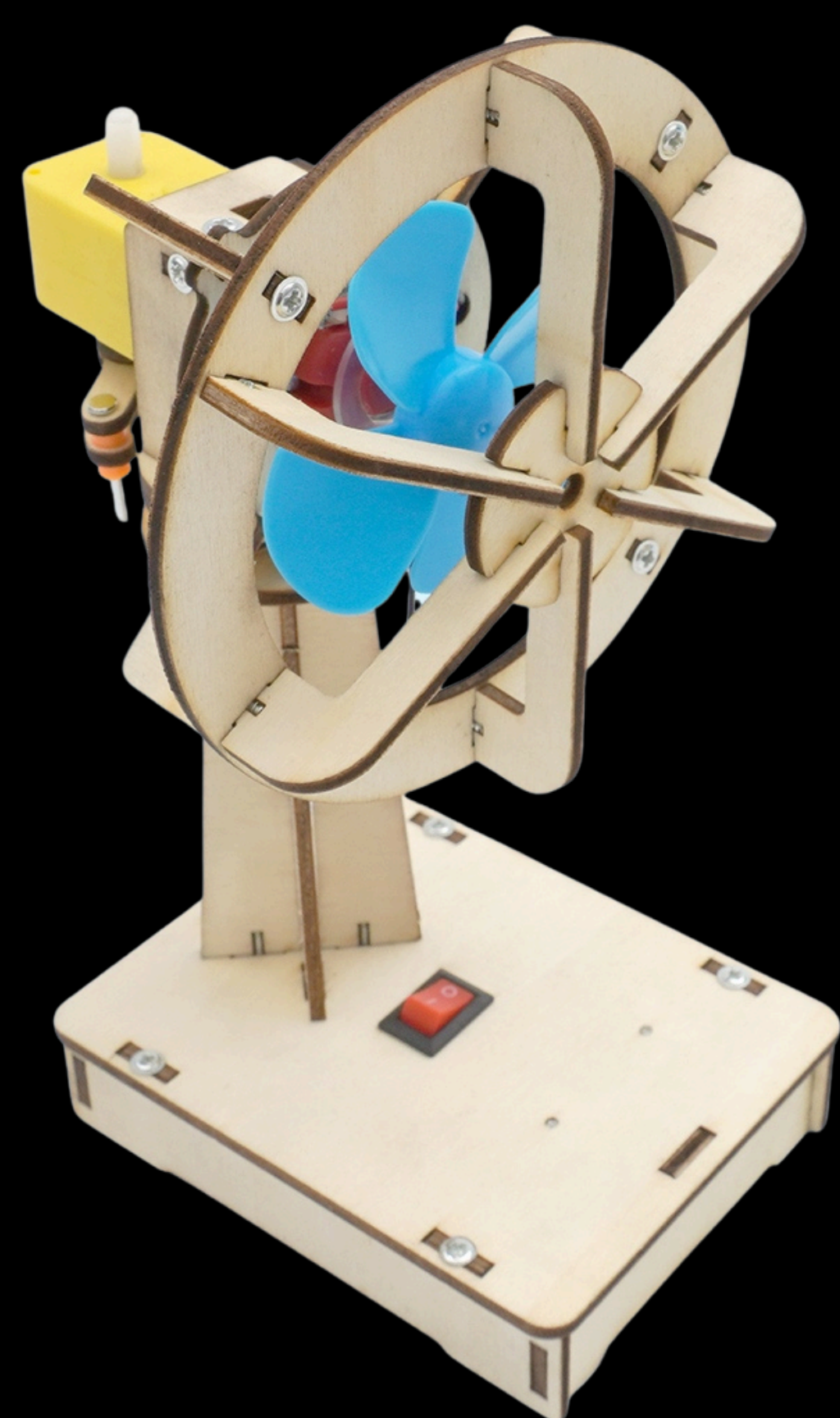


DIY OSCILLATING FAN

Assemble your very own oscillating fan and watch it spin and sway, just like a real one. This fun and educational kit is perfect for budding scientists and engineers of all ages. With easy-to-follow instructions, you'll be up and running in no time. Learn about electricity, mechanics, and engineering principles while creating a cool gadget to show off.



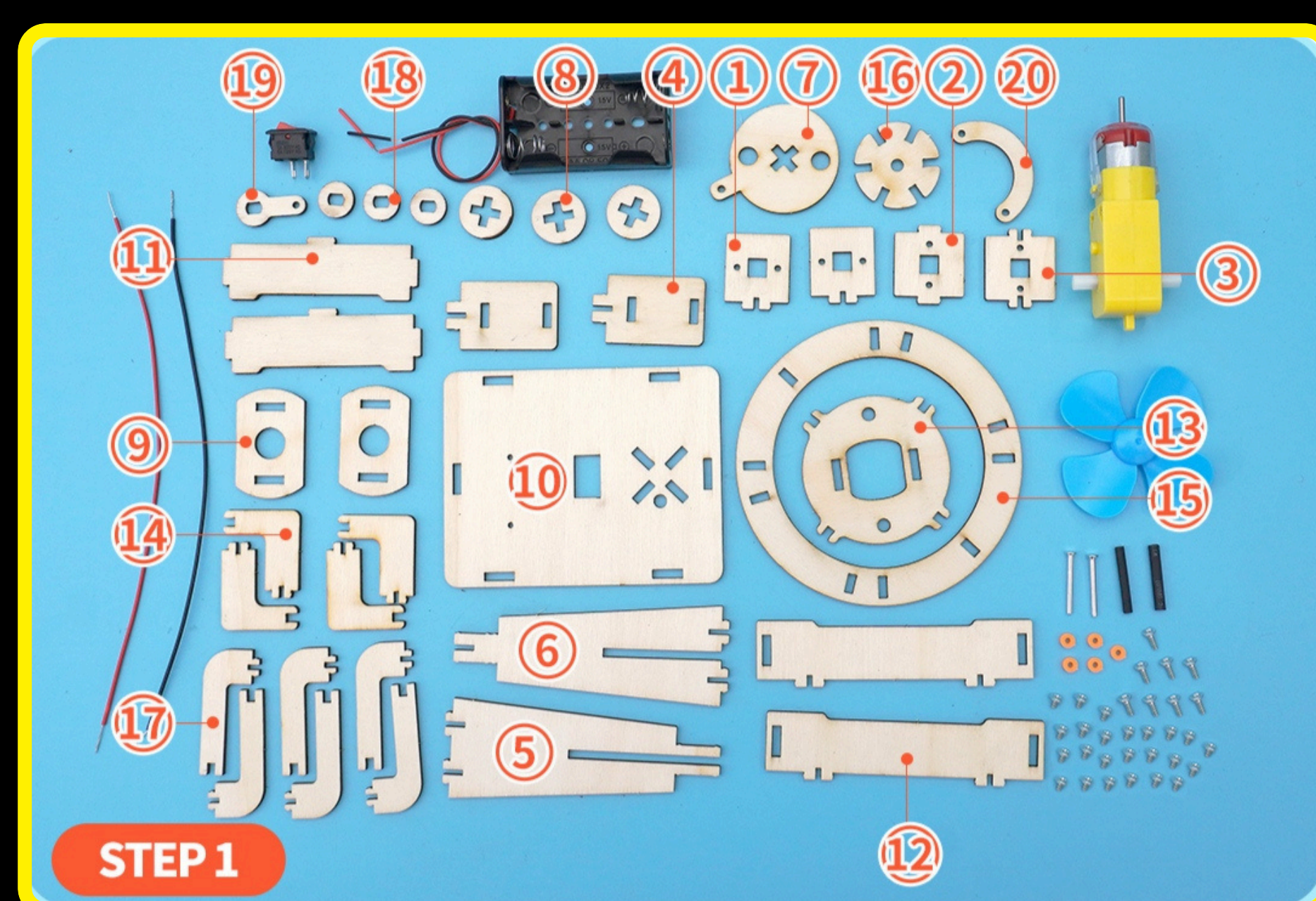
SAFETY FIRST

IMPORTANT! KEEP SAFE

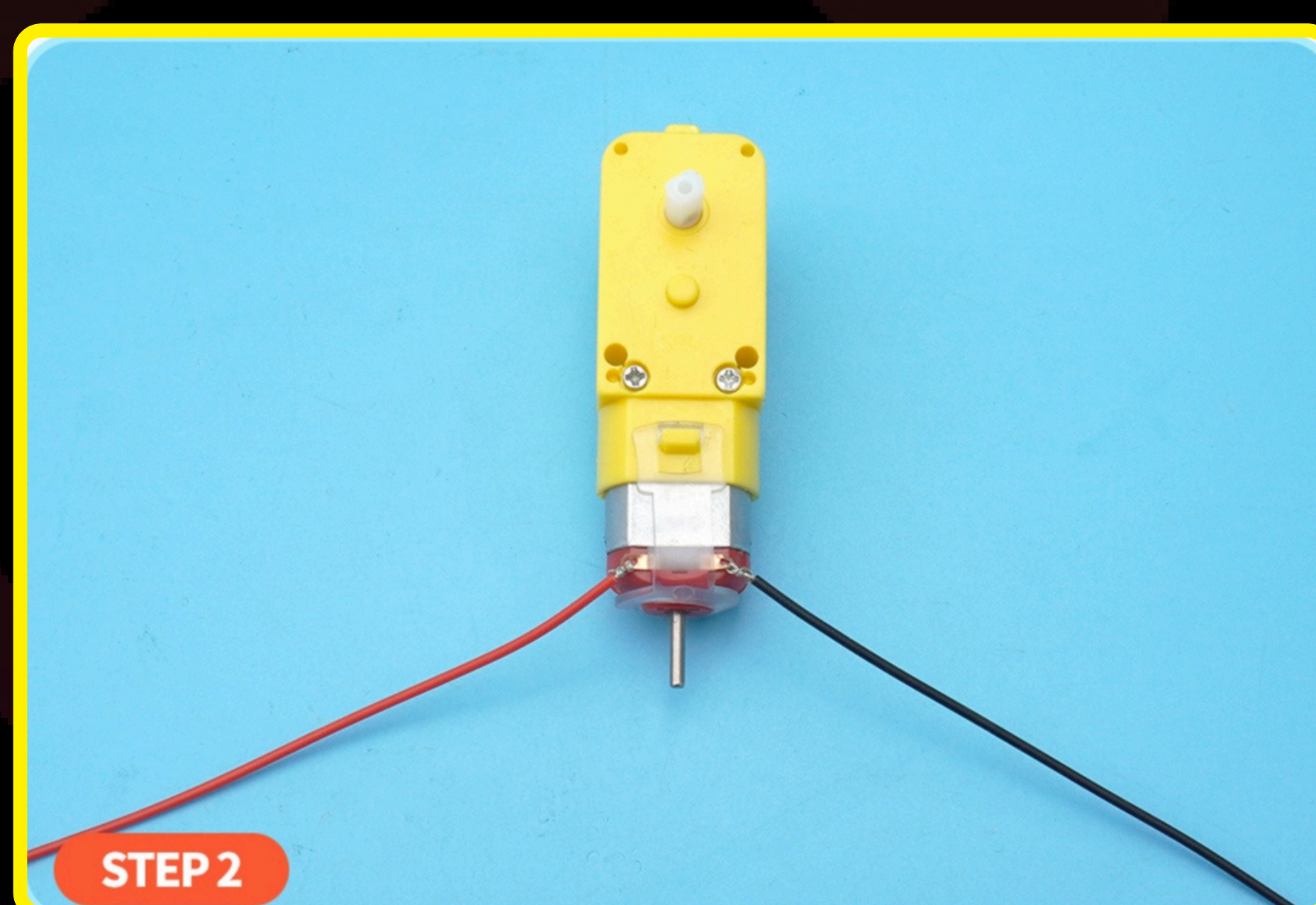
- Choking Hazard - This toy is not suitable for children under 3 years old. It contains small parts that could be a choking hazard.
- Handling Fire - Lighters are hot and can be dangerous. Always ask a grown-up to help you.
- Be careful when opening the pack! Small bits can go missing quickly. Losing these bits might stop your model from working.
- Don't build this alone! It's not safe to do it by yourself. Ask a grown-up like your mum, dad, or teacher to help.
- Read the instructions carefully. This will help you make your model. If you don't understand something, ask for help. It's okay to ask - it's part of learning!

THINGS YOU'LL NEED (NOT INCLUDED IN THE KIT)

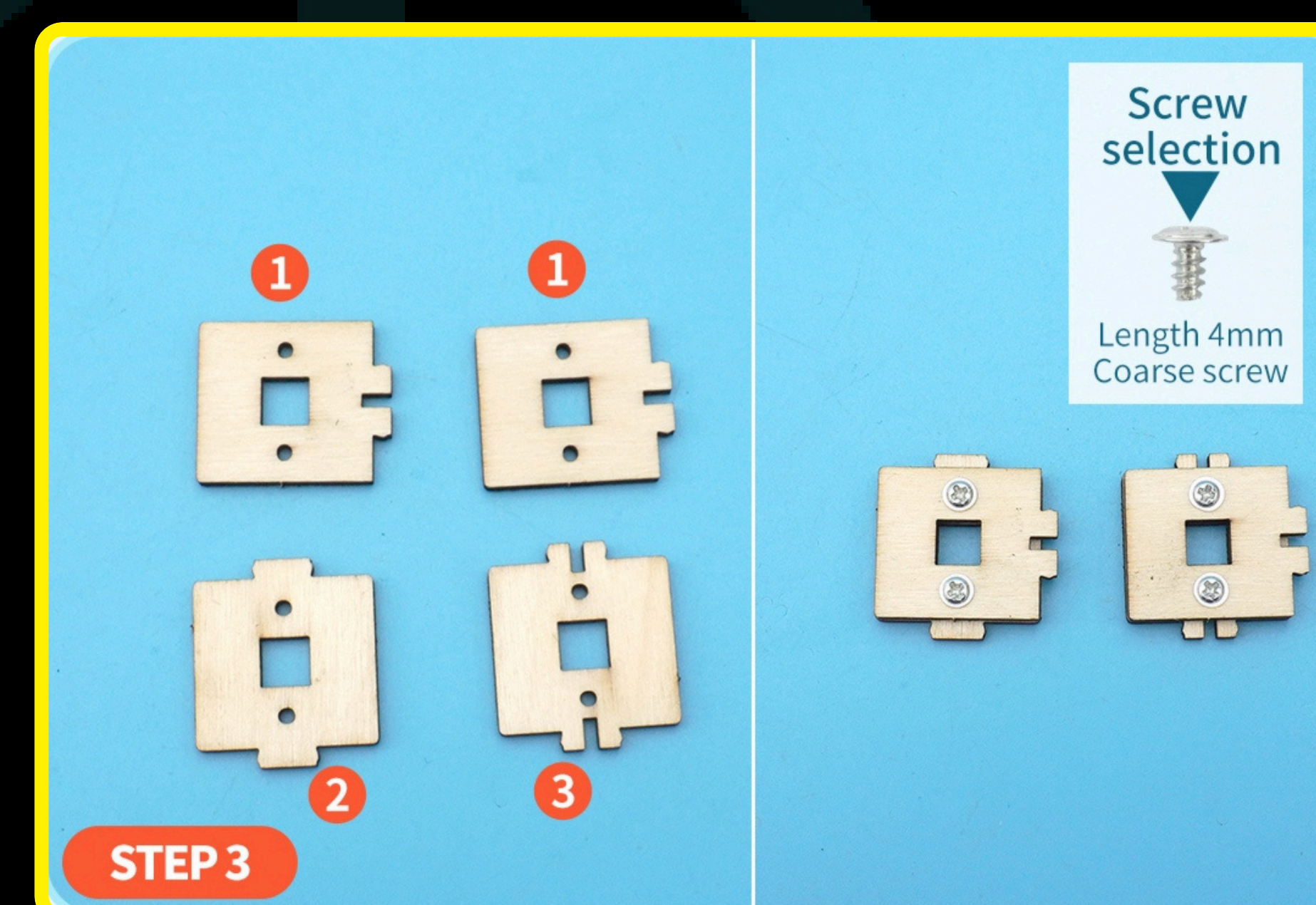
- Two (1.5V) AA batteries: These are the batteries that make your toy work!
- A Lighter: You'll need a lighter to shrink the heat shrinkable tube.



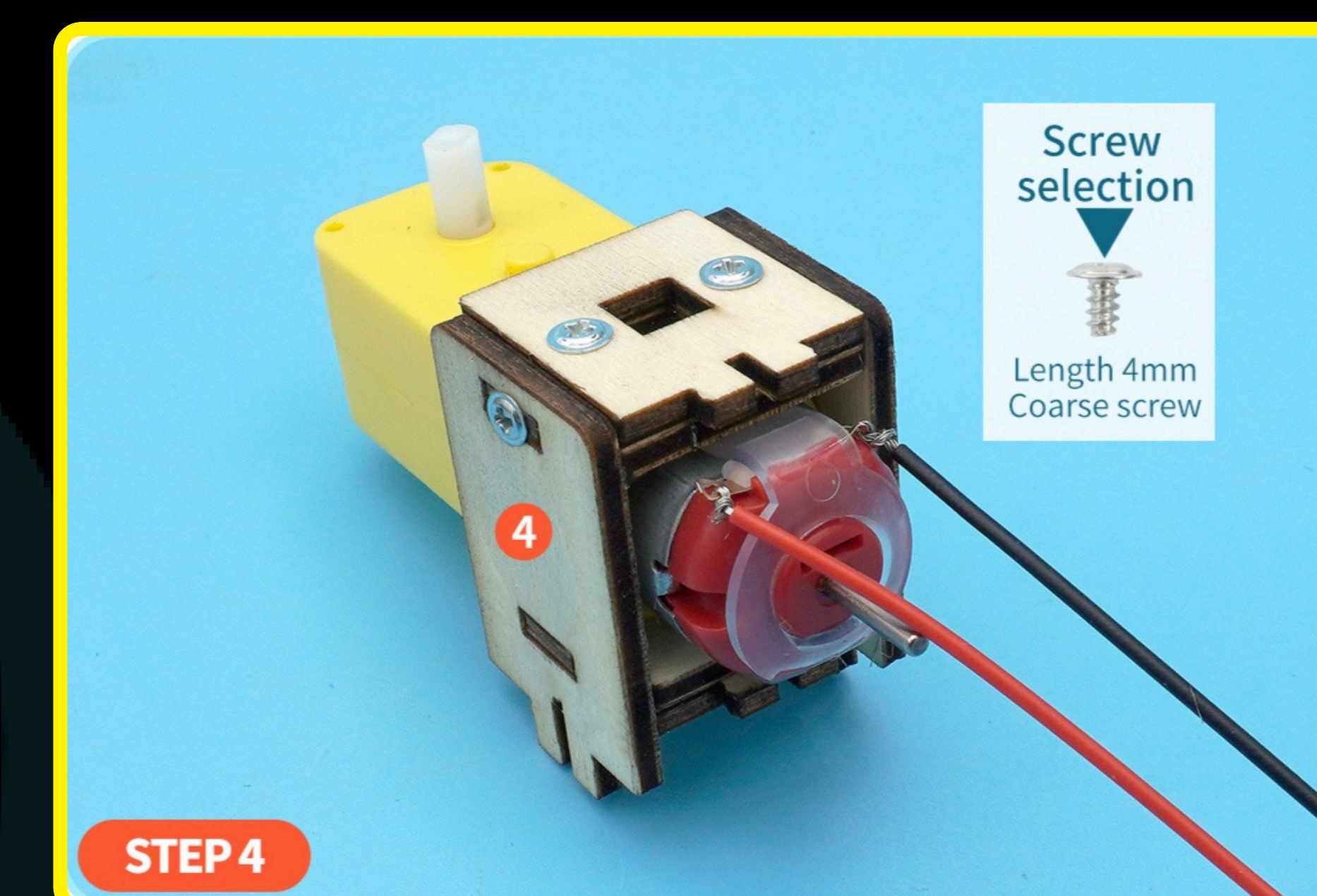
1. Prepare all the bits and gadgets in order



2. Take the two red and black wires that are 20cm long. Connect one end of each wire to each side of the motor, just like in the picture.

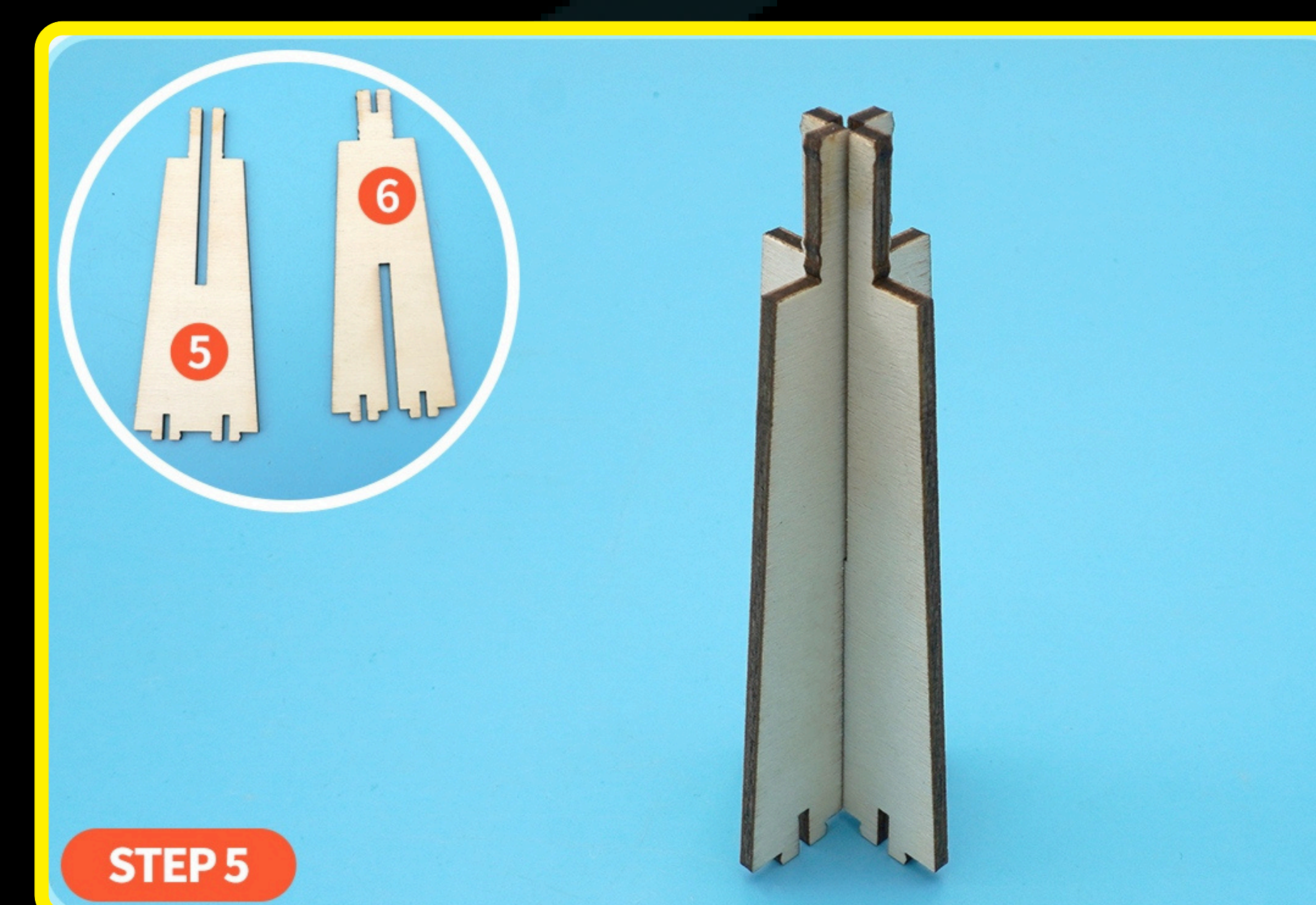


3. Use 4mm screws to install the two (1) boards on the boards (2) and (3) respectively.

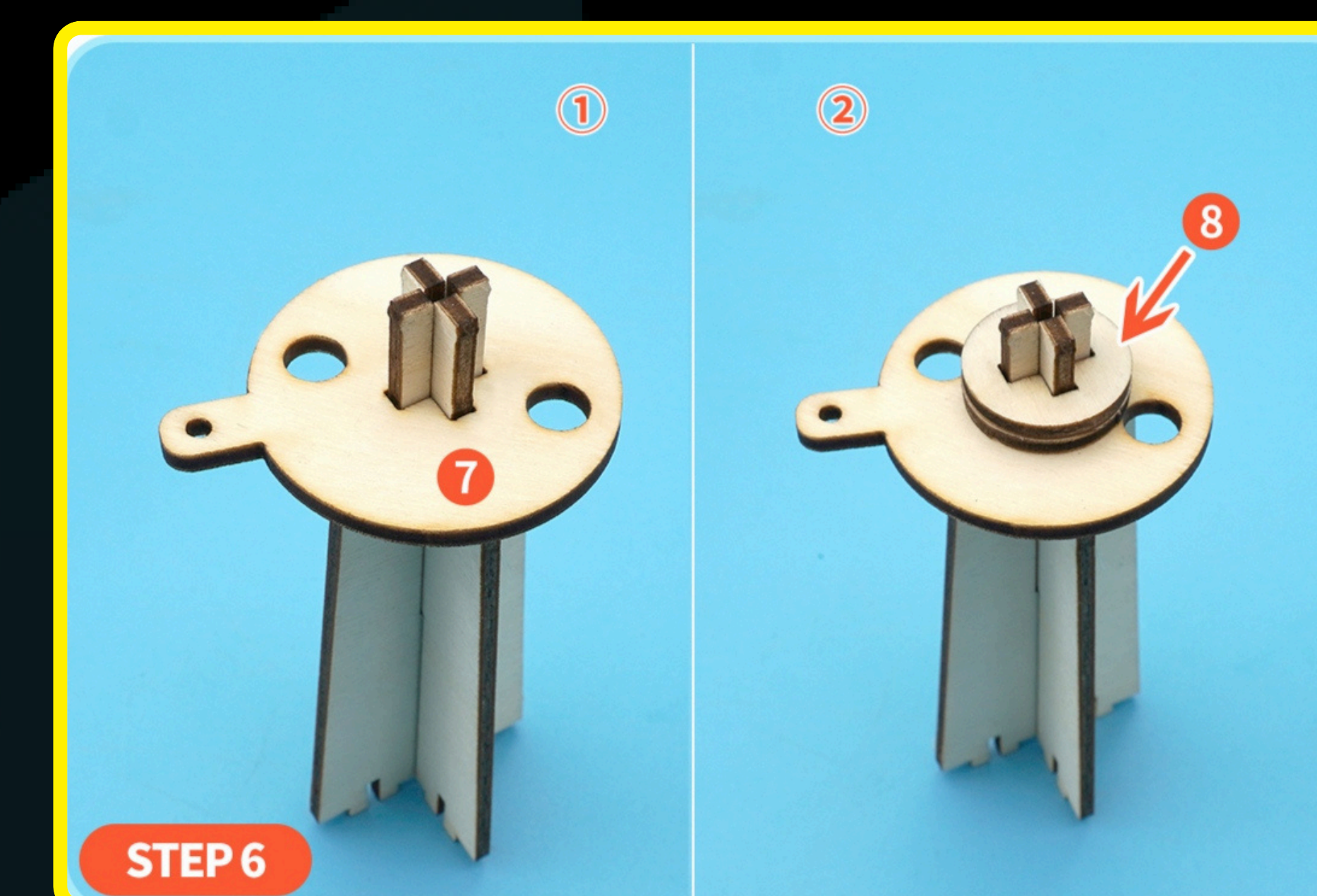


4. First, clamp the plates (2) and (3) to the motor, and then use 4mm screws to install the two (4) plates on the (2) and (3) plates respectively.

Note : check the orientation of the boards (1) & (4)



5. Install plate (6) on plate (5)

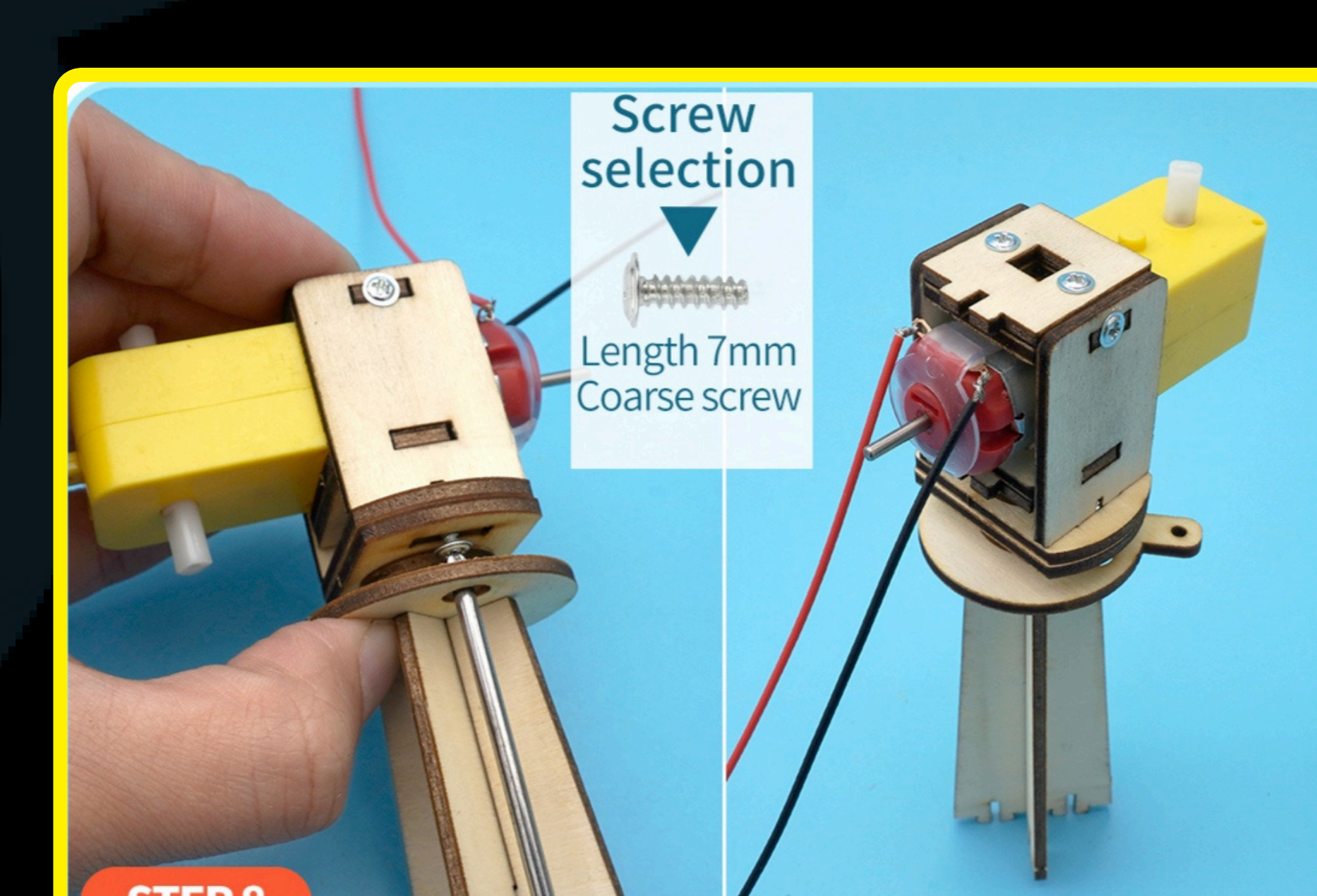


6. Install the (7) plate on (5)(6) as depicted in above picture 1.

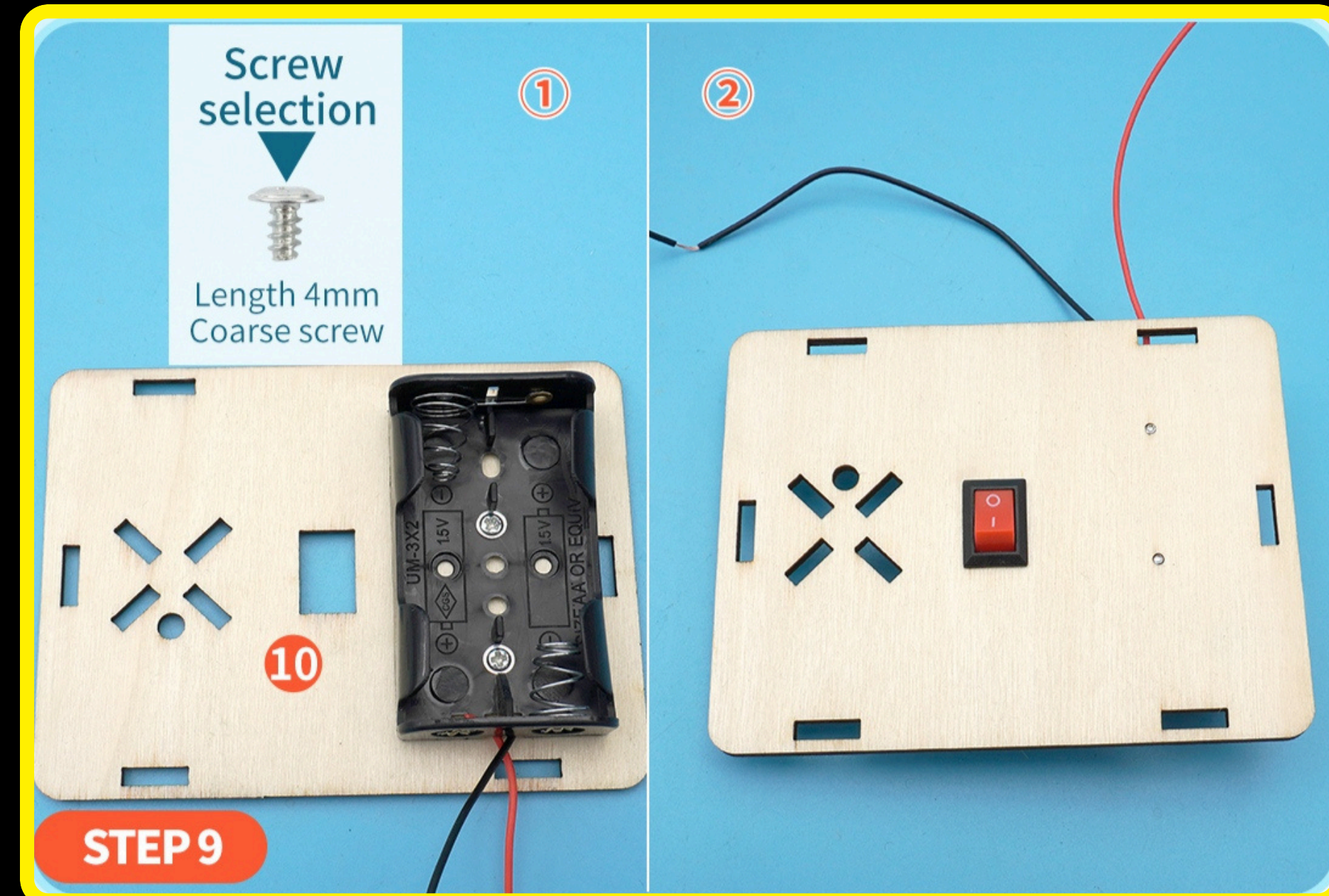
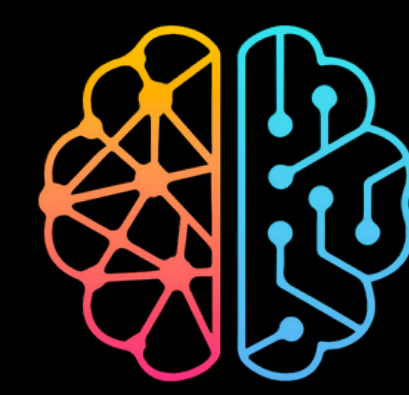
Then Install two (8) boards on (7) as depicted in a above picture 2.



7. Align the two (9) boards with the holes and install them on the two (8) plates. Then use a 7mm screw to install another (8) plate on the top.

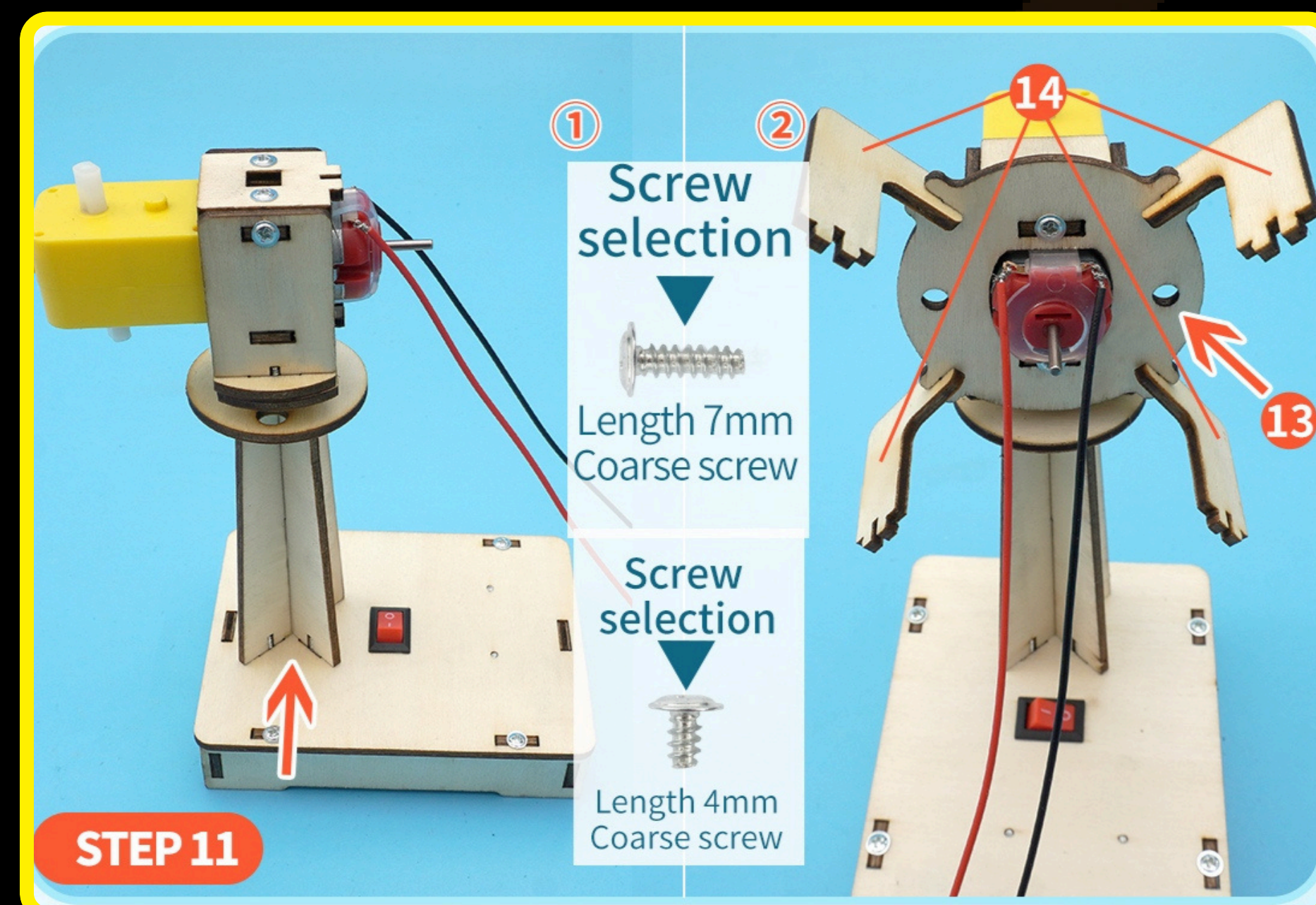


8. Use 7mm screws to install two (4) plates on (9) plate.



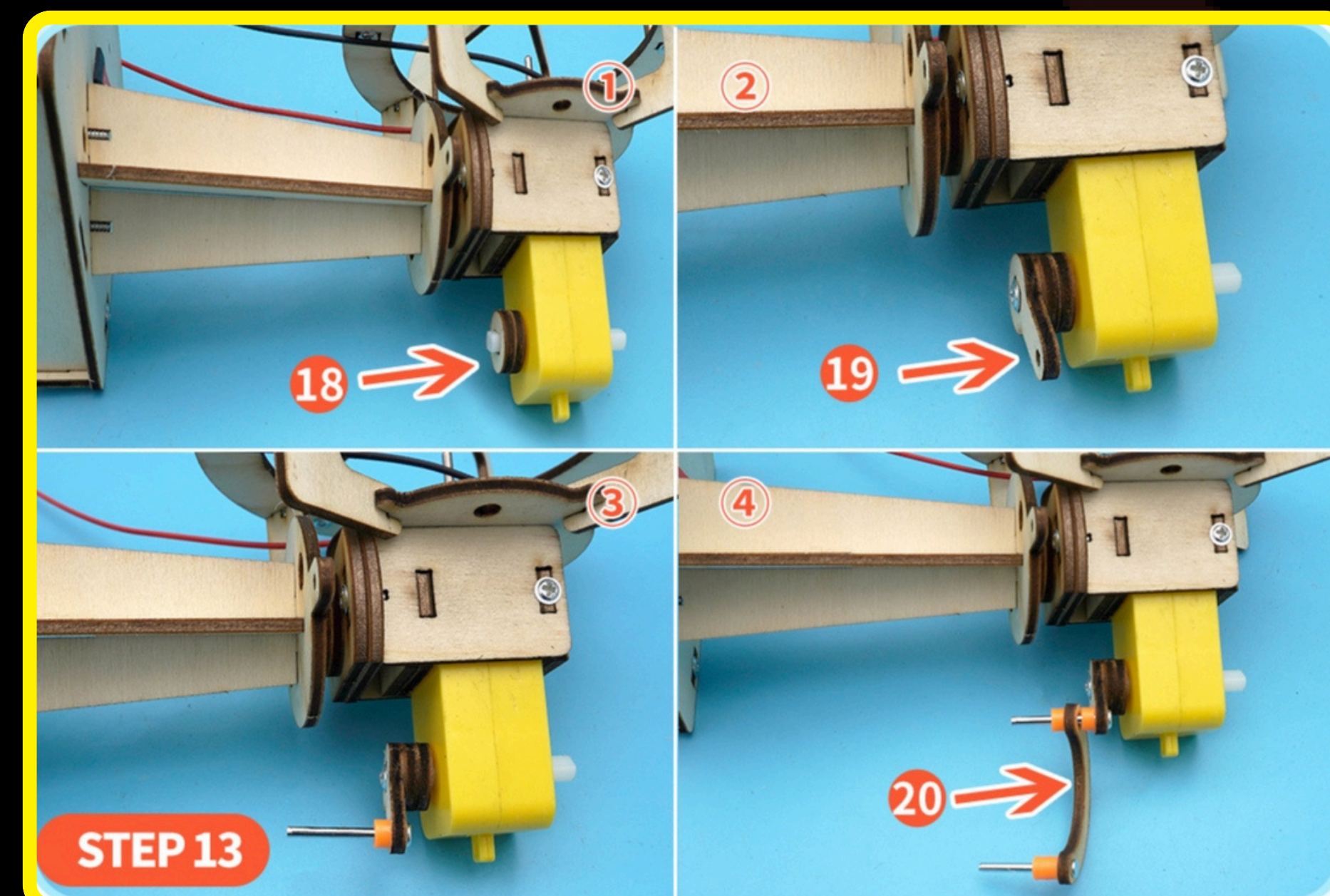
9. Use 4mm screws to install the battery box on board (10) as shown in picture 1.

Then install the rocker switch on board (10) as shown in picture 2.

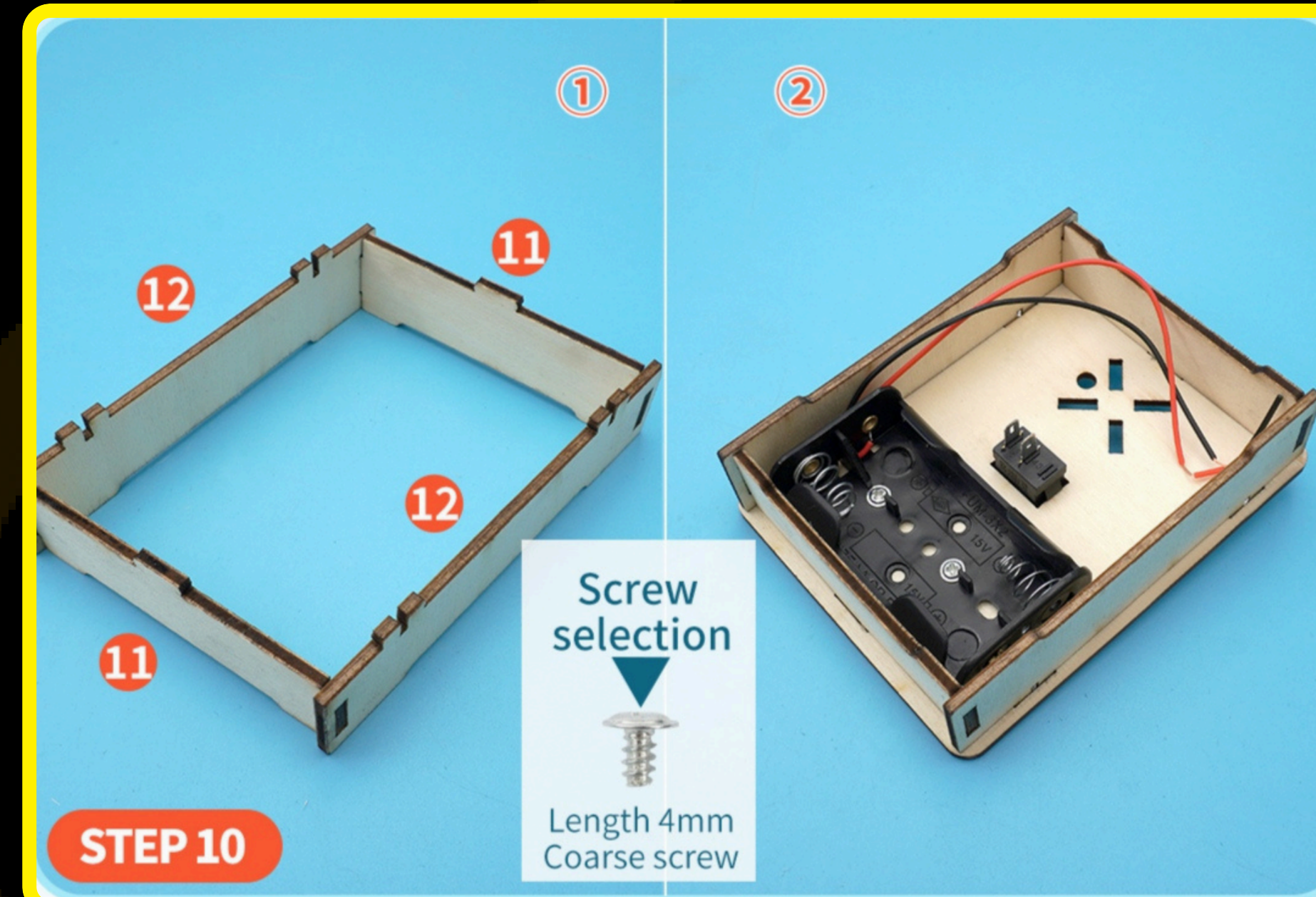


11. Use 7mm screws to install the plates (5) & (6) on the plate (10).

Then use 4mm screws to install plate (13) on two (1) plates, and then install four (14) plates on plate (13).

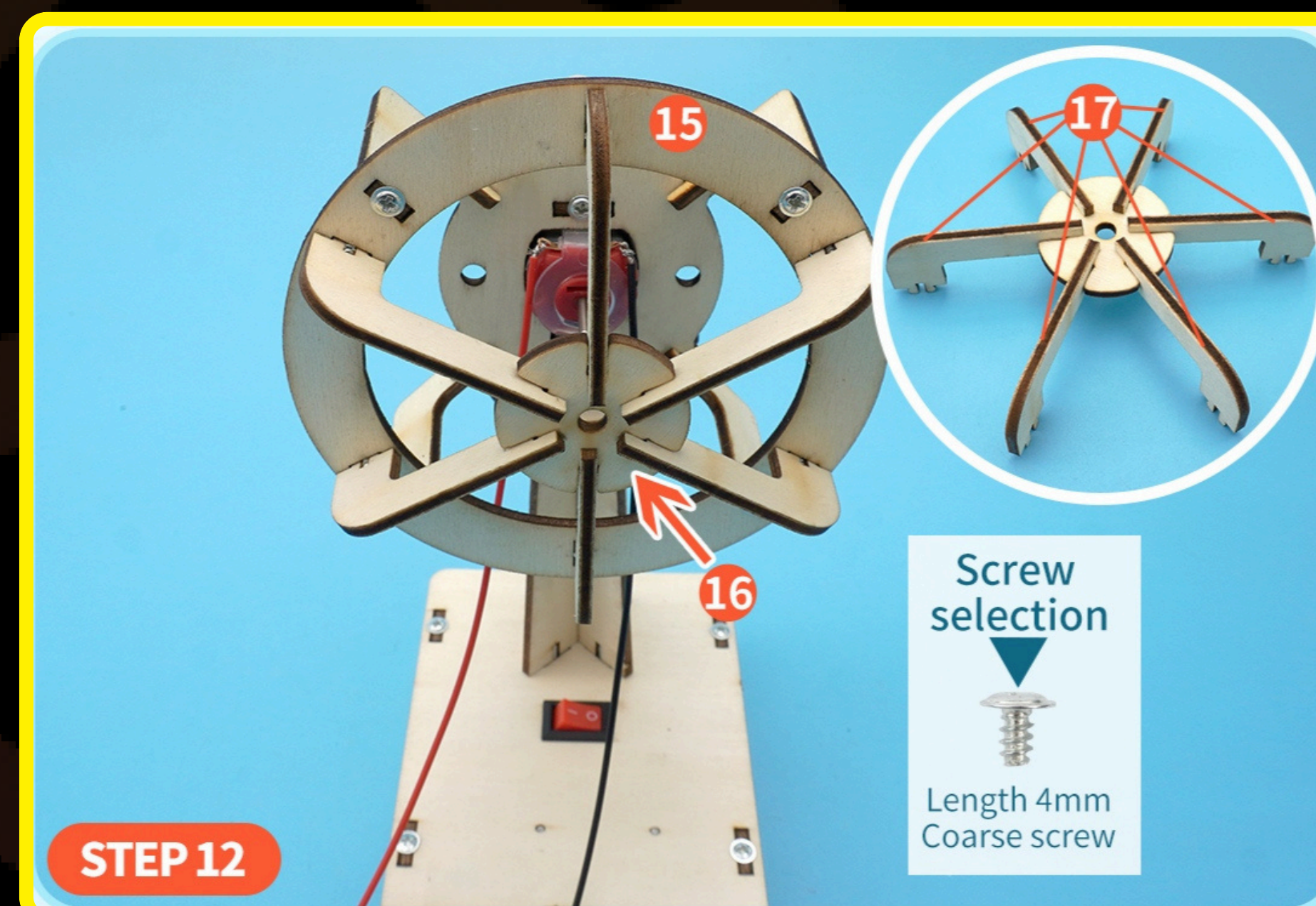


13. Step 1 : Install two (18) plates on the motor shaft.
Step 2 : Install plate (19) on the motor shaft with 4mm screws.
Step 3 : Pass a 2.1cm head nail through plate (19) and fix it with an orange fixing ring.
Step 4 : Install the (20) board on the 2.1cm head nail and fix it with an orange fixing ring, then pass a 2.1cm head nail through the (20) board and finally fix it with two orange fixing rings.

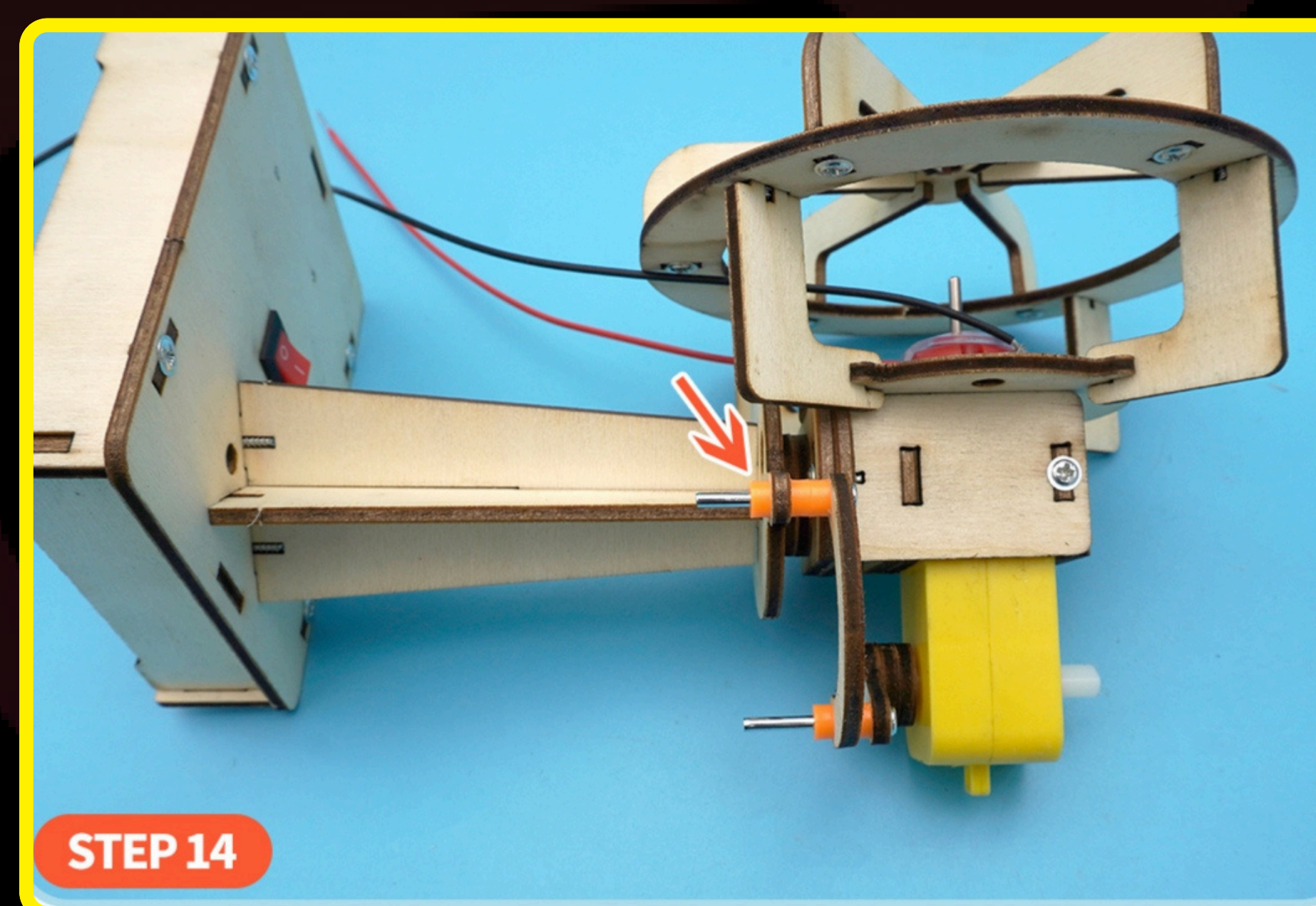


10. Install two (11) boards on two (12) boards as per figure 1.

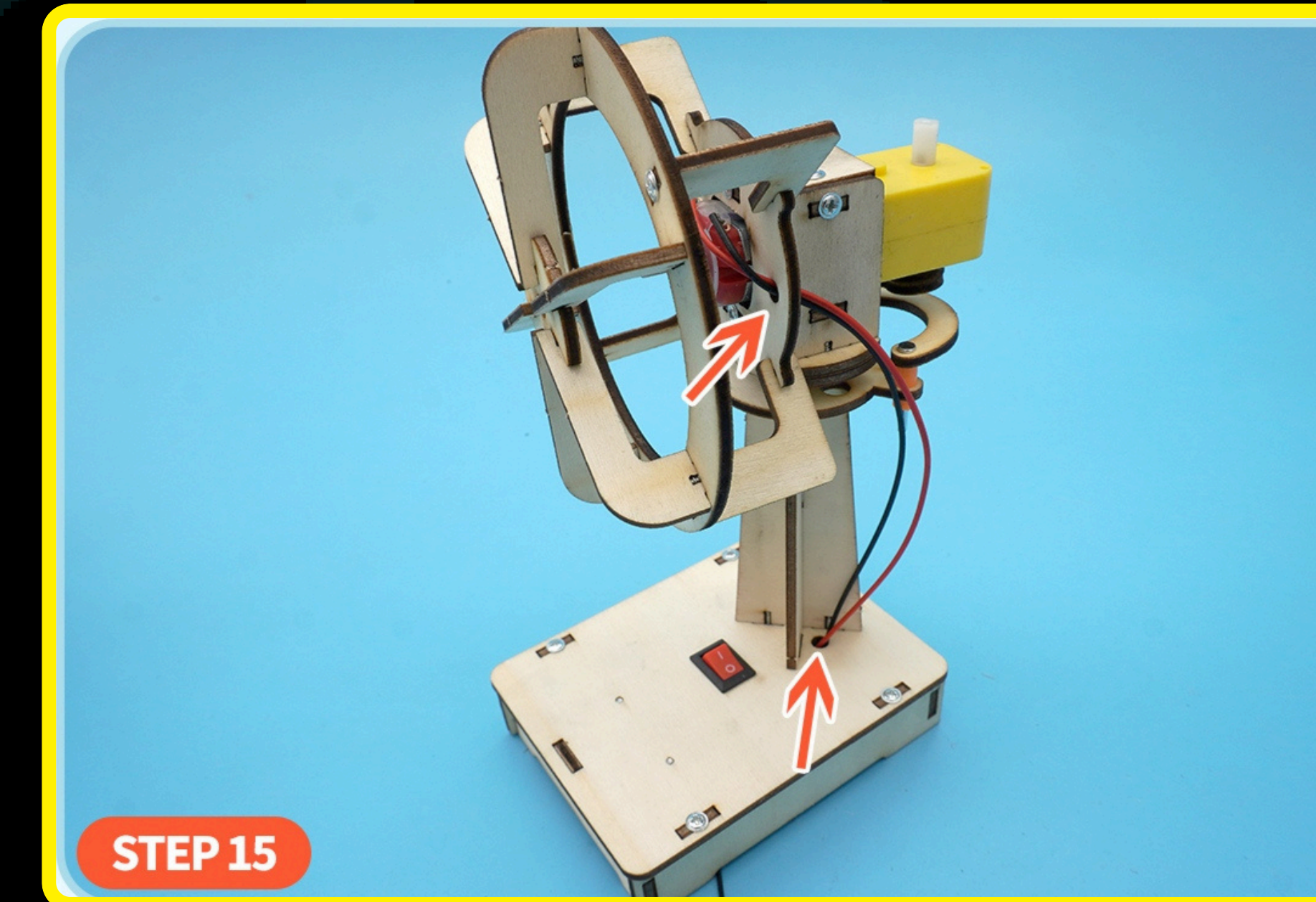
Then Install the (10) board on the combo of (11) & (12) boards with 4mm screws as shown in figure 2.



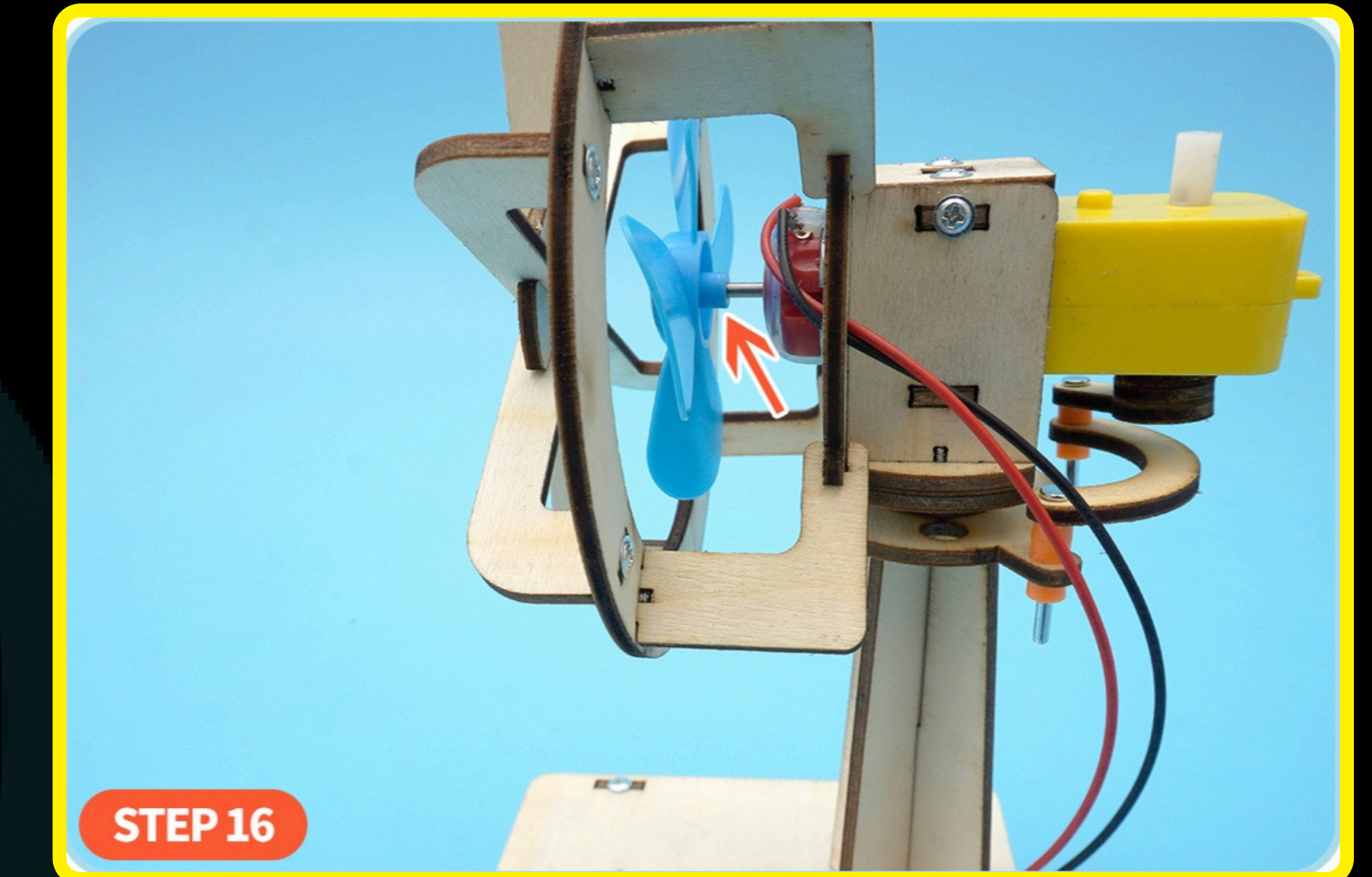
12. First, install the (15) board on the four (14) boards with 4mm screws, then install the six (17) boards on the (16) board, and finally install the six (17) boards on the (15) board with 4mm screws.



14. Pass the 2.1 cm head nail through the (7) plate, and then fix it with the orange fixing ring.



15. Pass two 20cm red and black wires through the holes of the plates (7) and (10).

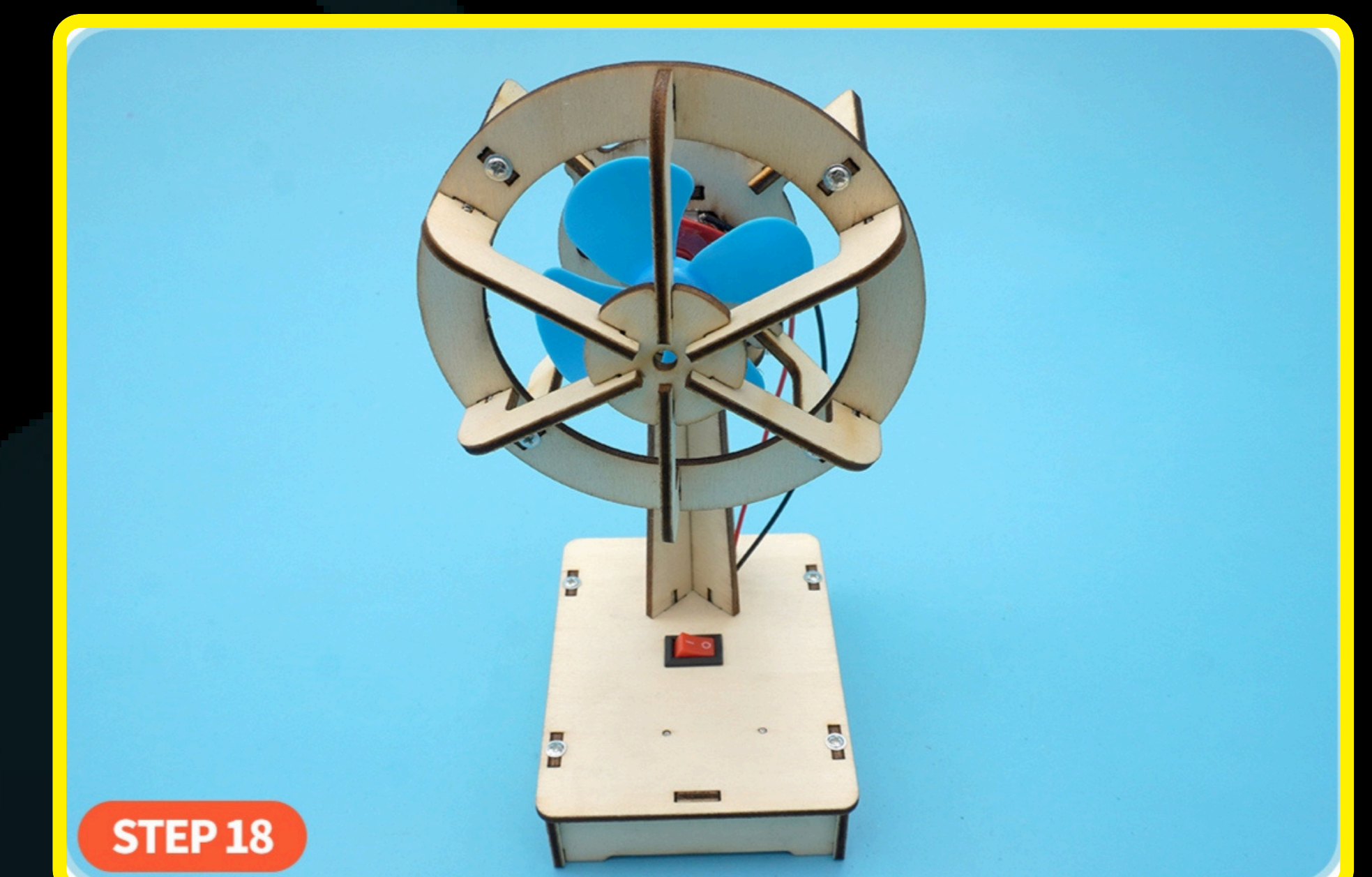


16. Install the fan blade on the motor shaft.



17. Step 1 : Connect the black battery box wire and the 20cm red wire to the rocker switch.
Step 2 : First put a heat shrink tube on the 20cm black wire, and then connect the 20cm black wire and the red battery box wire.
Step 3 : Completely cover the wire connection with the heat shrinkable tube, and then bake it with a lighter to shrink the heat shrinkable tube.

Note : Ask a grown-up to help you with a lighter, handle it with care to avoid burns.



18. The assembly of the oscillating fan is now complete! Install two AA batteries in the battery box, turn on the switch, and you fan should start working.



TROUBLESHOOTING

Fan is not working? Try these steps

1. Check whether the wires are attached as per the given instructions.
2. Make sure to use fresh batteries or the fan might not work owing to lack of sufficient power.
3. Make sure that you have followed instructions numbered [13] & [14]
4. After assembly and battery installation, if the generating wind blows backward, try reconnecting the wires as per the instructions provided as you may have connected opposite wires at some point.

