



GEE ESS ENGINEERING WORKS

ISO 9001:2015 CERTIFIED

FOR TOP PERFORMANCE USE "GEC" INDUSTRIAL CHAINS

Manufacturers & Exporters of Industrial Chains, Sprocket, Slats & Other
Sugar Machinery Parts.





ISO 9001:2015 CERTIFIED

GEE ESS ENGINEERING WORKS

About Us

Dear Technologist /Engineer,

As you are aware we are manufacturing high quality industrial chains and other sugar machinery parts since 1972. We have achieved many distinctions in manufacturing various types of chains , which used to wear out within the shortest period .

GEE ESS chains have followed a tradition. A tradition of identifying with the Technologist/Engineer, his needs and wants ,upholding his wants ,trying to find a solution to his each problem.

Today GEE EES is undergoing a transition. Growing onwards to give the engineers more sophisticated technology . We are evolving continuously to meet the changing technology ,changing needs with the changing times .

We are manufacturing the chains with a commitment to quality and excellence . Our chains are working nationwide without any down time in the plants because GEE ESS chains never let you down .

All chain parts duly hardened, tempered and ground followed by the chain assembly on hydraulic machines especially designed for chain fitting have provided us an edge to serve our clients with the best quality in class.

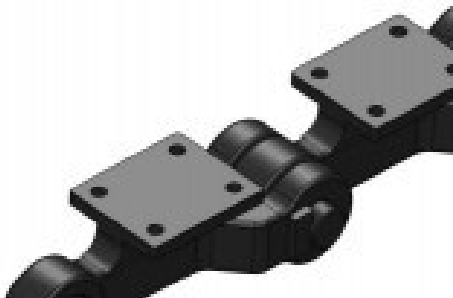


GEE ESS ENGINEERING WORKS

ISO 9001:2015 CERTIFIED

FORGED LINK CHAINS

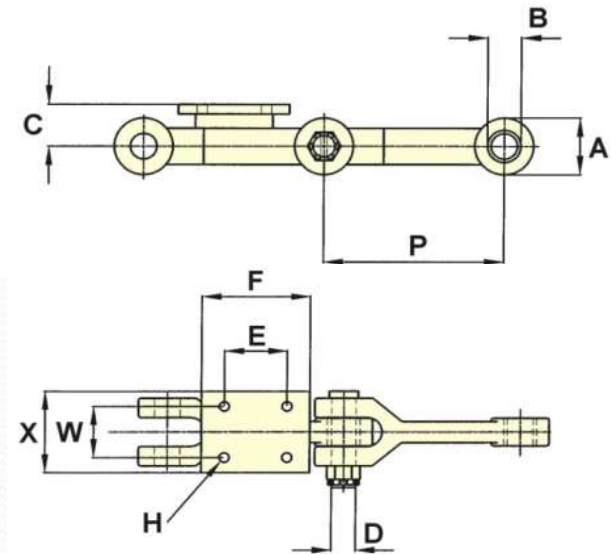
FORGED LINK Chains are manufactured from selected quality steels for forging of links and then heat treated to achieve maximum wear resistance. Pins & Bushes of stainless steel are used in these chains. Pins with locking nuts enable these chains to give trouble free operation and eliminates the down time losses. **VARIOUS TYPES OF FORGED LINKS MANUFACTURED ARE SHOWN FOR REFERENCE.**



ALL OTHER TYPES OF LINKS, AS PER DESIGN AND DRAWINGS OF OUR CLIENTS ARE MANUFACTURED TO SUIT THEIR APPLICATIONS & REQUIREMENTS.



**DIMENSIONAL TABLE FOR A FEW OF THE
CHAIN LINKS WHICH ARE IN REGULAR
PRODUCTION IS SHOWN HERE.
DIMENSIONS CAN BE CHANGED AS PER THE
CLIENTS' REQUIREMENT OF LINKS AND
THEIR DRAWINGS.**



CHAIN NO.	PITCH P	ALLOW. LOAD	U.T.S.	PIN DIA. D	SIDEBAR DEPTH A	BUSH DIA. B	C	E	F	BOLT DIA. H	W	X
F229	9.000		132,200	35MM	67MM	42MM	51MM	100MM	140MM	16MM	80MM	130MM
F304	12.000		194,000	45MM	100MM	57MM	74MM	108MM	187MM	16MM	92MM	127MM
F200	8.000		90,000	32MM	65MM	40MM	45MM					
F150	6.000		61,200	28MM	55MM	35MM	38MM					
F100	4.000		40,000	20MM	38MM	--	--					

Materials used for links are:

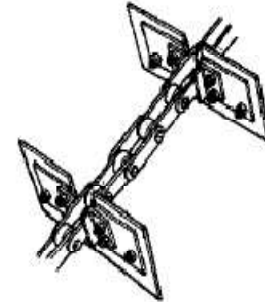
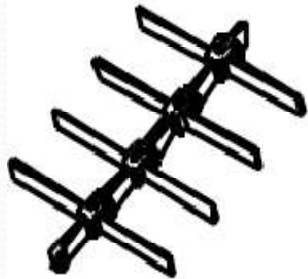
C 15; 18 Cr Ni 8; 20 Mn Cr 5; 14 Ni Cr 14; C 45; 42 Cr Mo 4

Materials used for Pins are:

AISI 410, AISI420, AISI 304, AISI 321, EN353, 20MnCr5

Typical materials handled include:

Cement • sand • glass cullet • fly ash • limestone • ores • coal • fertilizers • miscellaneous powders • flakes • granules and pellets



SOME TYPICAL FORGED LINK MODELS ARE SHOWN BELOW

