



RACKONE



RACKONE

SMARTRACK

19" ENCLOSURE SOLUTION

BROUCHERE



www.rackoneindia.com

   /rackoneindia.com



RACKONE SMARTRACK

19" ENCLOSURE SOLUTION

The RACKONE™ SMARTRACK is an innovative enclosure solution designed for small-and-medium segment customers and branch offices. Keeping in view the need for economical packaging, it can accommodate any standard 19" equipment.

Made completely of high-quality steel, with appealing aesthetics, SMARTRACK can be supplied in completely welded for safety of mounting equipment & product.

A smart choice today that will stand you in good stead tomorrow.

#justqualitythings

OTHER PRODUCTS



Power Cable



Power SMPS



BNC & DC



Cat-6 Cable

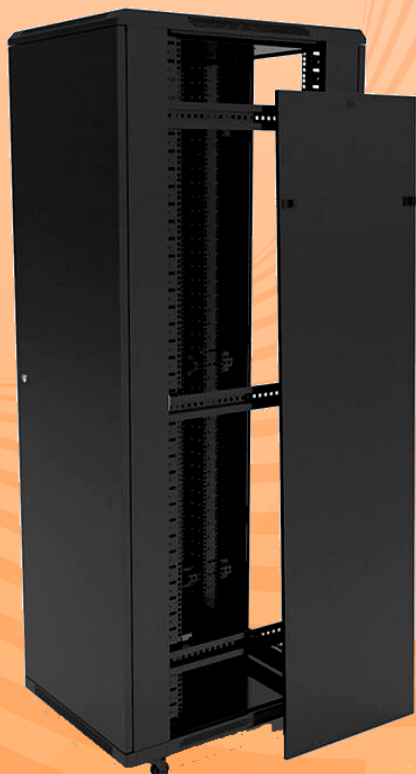


Spike Guard



www.rackoneindia.com

[Twitter](#) [Instagram](#) [Facebook](#) /rackoneindia.com



Features

- Conforms to DIN 41494 and EIA 310 standards
- Attractive styling to blend with office environments
- Supplied fully assembled or in completely welding
- Glass or partly perforated metal front door options
- Perforated rear door
- Top and bottom cover with cable entry provision
- Fully recessible 19" equipment mounting angle
- Ventilated top and bottom covers
- Cestor wheel with lock system for easy moving.
- Removable side panels with slam latches for easy access
- Load rating 250 Kgs, with 500 Kgs option

Material & Finishing :

- Made with 1.0mm & 1.2mm steel sheet
- Steel cabinet powder coated black (RAL 9003) or anthracite grey
- Steel door and glass door trims powder coated black (RAL 9003) or anthracite grey

Sizes:

17U To 42U (As On Order)

WIDTH :- 600, 800 & 1000 (in mm)

DEPTH :- 600, 800 & 1000 (in mm)

SIZE	HEIGHT _(mm)	SIZE	HEIGHT _(mm)
17U	750	27U	1200
19U	825	32U	1425
21U	900	36U	1625
24U	1015	42U	2050

Accessories:-

Available as on customer requirement (Optional):-

P.D.U :- 4,6 & 10 Socket with 5Amp & 15Amp with MCB & Non

Tray :- Half & Full Try As Rack Size & Customer Requirement

C.M. :- 24 & 48 port vertical & horizontal as per use

Fan :- 240v AC 5*5 cooling fan

Screw:- Wall & switch mount screw set





Features

- Conforms to DIN 41494 and EIA 310 standards
- Attractive styling to blend with office environments
- Supplied fully assembled or in completely welding
- toughened Glass or partly perforated metal front door options with lock system
- Cable entry provision at top & bottom with rubber protection at edges
- Fully recessible & also fix (optional as per size) 19" equipment mounting angle
- Fan Ventilated top & air cut designed both side covers
- Wall mount for easy installtion . (floor mount also available on order)
- Back side open & close both option available
- Load rating 20 Kgs, with 100 Kgs option



Material & Finishing :

- Made with 0.8mm & 1.0mm steel sheet
- Steel cabinet powder coated black (RAL 9003) or anthracite grey
- Steel door and toughened glass door trims powder coated black (RAL 9003) or anthracite grey

Sizes:

4U To 15U

WIDTH :- 530, 550, 600 (in mm)

DEPTH :- 430, 450, 600 (in mm)

SIZE	HEIGHT	SIZE	HEIGHT
4U	250	12U	570
6U	330	15U	690
9U	450		



Acessories:-

Available as on customer requirement (Optional):-

P.D.U :- 4,6 & Socket with 5Amp & 15Amp with MCB & Non

Tray :- Half & Full Try As Rack Size & Customer Requirement

C.M. :- 24 & 48 port vertical & horizontal as per use

Fan :- 240v AC 5*5 cooling fan

Screw:- Wall & switch mount screw set



RACKONE SMARTRACK

19" ENCLOSURE SOLUTION



Features

- For small networking, telecom and CCTV applications
- Attractive styling to blend with office environments
- Supplied fully assembled or in completely welding
- toughened Glass or partly perforated metal front door options with lock system
- Cable entry provision at top & bottom with rubber protection at edges
- Fan Ventilated top & air cut designed both side covers
- Wall mount for easy installation .
- Back side open & close both option available
- Sufficient perforation provided at side & front for ventilation
- Load rating 5 Kgs, with 30 Kgs option

Material & Finishing :

- Made with 0.8mm & 1.0mm steel sheet
- Steel cabinet powder coated black (RAL 9003) or anthracite grey
- Steel door and toughened glass door trims powder coated black (RAL 9003) or anthracite grey

Sizes:

1U To 4U (DVR)

WIDTH :- 300, 375, 400, 500 (in mm)

DEPTH :- 300, 375, 400, 450 (in mm)

SIZE	HEIGHT	SIZE	HEIGHT
1U	150	3U	200
2U	150	4U	250

Accessories:-

Available as on customer requirement (optional) :-

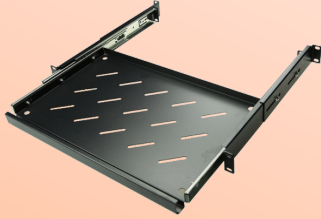
P.D.U :- 3 & 4 & Socket with 5Amp

TRAY :- 3U & 4U Have Inbuilt Try

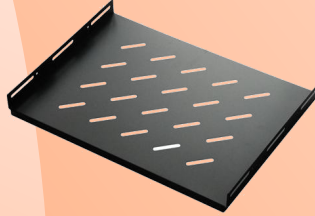
FAN :- 240v AC 5*5 cooling fan

SCREW:- Wall mount screw set





Caster Tray 19"



Full Tray 19"



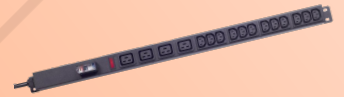
Half Tray 19"



Rack PDU (4,6 & 10)



PDU With MCB



Server Rack PDU



Cable Manager PVC



Cable Manager Metal



Cable Manager Open



AC Cooling Fan



Caster Wheel Tray



Mounting Screw

- RACKONE® Is A Registered Trademark.
- SmartRack Is A Tradename Comes Under RACKONE®
- All Picture That Displayed Here Just For Product Identification, Actual Product Much Differ from above Products.

