

About

Spath Peace Lily

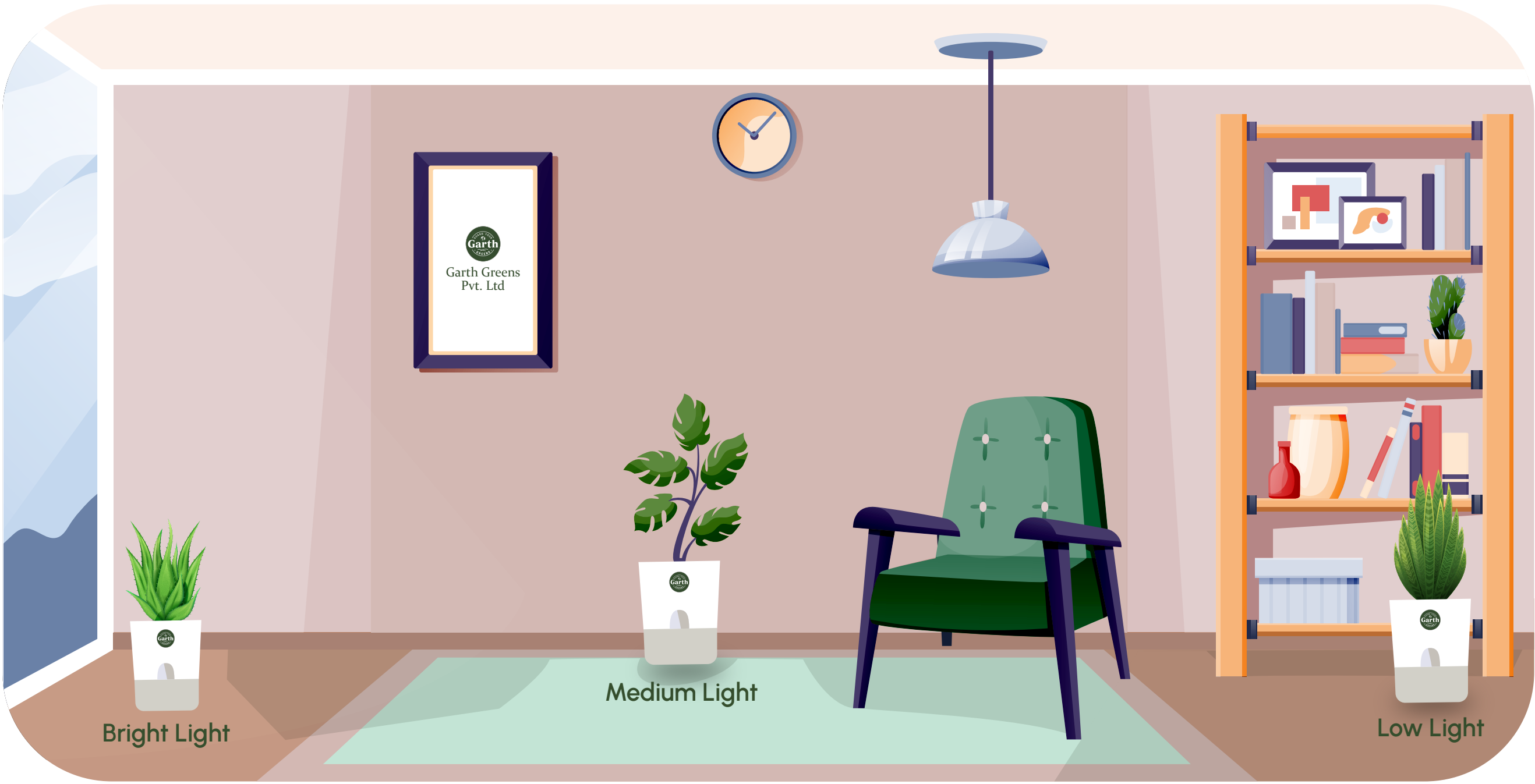
With its graceful white blooms and lush green leaves, the Peace Lily is a favorite for indoor spaces. Known for its air-purifying qualities, it brings beauty and tranquility to your home.

Origin

Native to tropical regions of the Americas and Southeast Asia.

Light

Thrives in low to medium, indirect light. Avoid direct sunlight, which can scorch the leaves. Ideal for dimmer spots in your home.



Water

Water about once a week, letting the soil dry slightly between waterings. Be cautious of overwatering, as it can cause root rot.

Humidity

Prefers high humidity but adjusts well to average household levels. Misting the leaves can help maintain optimal conditions.

Fun Fact:

During the 1970s, Peace Lilies were symbols of harmony and were often gifted as a sign of truce. Additionally, NASA confirmed their air-purifying prowess, making them silent, beautiful, and helpful housemates!

Signs of Distress:	Cause:	Solution:
Drooping leaves	Underwatering or overwatering	Water when the soil feels dry; Peace Lilies recover quickly from wilting.
Brown leaf tips	Low humidity or cold drafts	Increase humidity, avoid drafts, and use distilled water if tap water causes issues.

Placement

Peace Lilies enhance air quality and create a serene environment, making them perfect for.

Wealth Corner:

Place in a well-lit corner or on a side table with indirect light to add elegance and improve air quality.

Entrance:

Keep on your desk to foster focus and reduce stress for a productive workspace.

Work Desk:

Add to your bedroom to purify the air, reduce pollutants, and create a calming atmosphere.