

About

Fiddle Leaf Fig

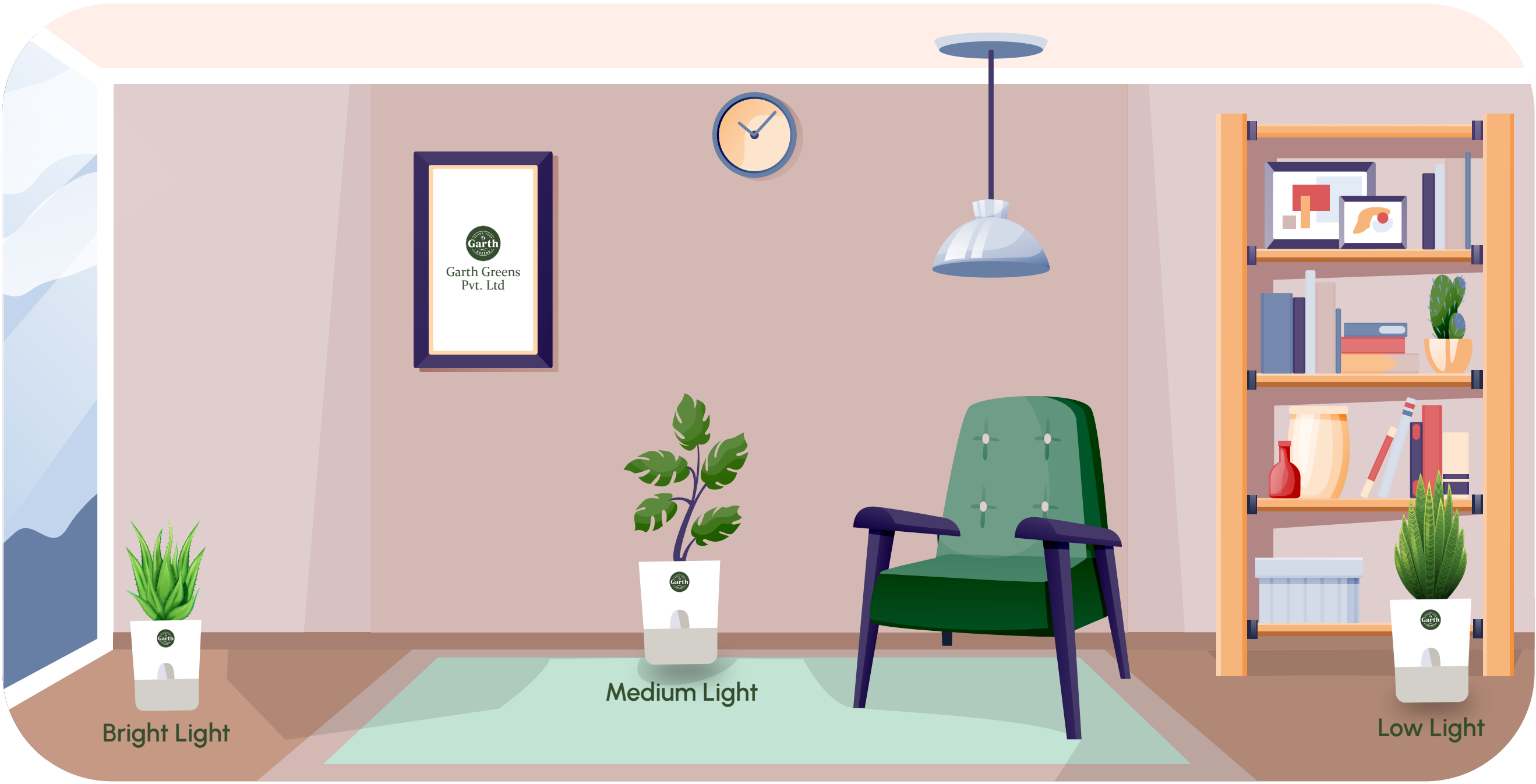
The Fiddle Leaf Fig is a bold and dramatic plant known for its large, glossy leaves that make a striking statement in any space. With its elegant form and lush foliage, it's a favorite among interior designers and plant enthusiasts looking to add sophistication and greenery to their home.

Origin

Native to the tropical regions of West Africa.

Light

Thrives in bright, indirect light but can tolerate some direct sunlight. Ensure it gets plenty of light to encourage strong growth, as it may struggle in low light conditions.



Water

Water every 1-2 weeks, allowing the topsoil to dry out between waterings. Be careful not to overwater, as the Fiddle Leaf Fig is sensitive to root rot. Ensure the pot has proper drainage to prevent waterlogging.

Humidity

Prefers high humidity but can adapt to average household levels. Regular misting or placing the plant near a humidifier can help keep the leaves vibrant and healthy.

Fun Fact:

The Fiddle Leaf Fig earned its name from the unique shape of its leaves, which resemble a violin or fiddle. It has gained popularity in recent years due to its dramatic look and its ability to instantly elevate a room’s decor.

Signs of Distress:	Cause:	Solution:
Yellowing leaves	Overwatering or insufficient light	Adjust watering frequency and ensure the plant is placed in a well-lit spot.
Brown leaf tips	Low humidity or inconsistent watering	Increase humidity and maintain a regular watering schedule.

Placement

The Fiddle Leaf Fig is perfect for adding bold style and positive energy to your home. Here’s where to place it.

Wealth Corner:

Position it in the southeast corner to enhance prosperity and bring a touch of tropical elegance.

Entrance:

Place near the entryway to create a grand, welcoming atmosphere.

Work Desk:

Keep on your desk to promote focus and creativity, while adding a fresh, natural element to your workspace.