

About

Broken Heart Plant

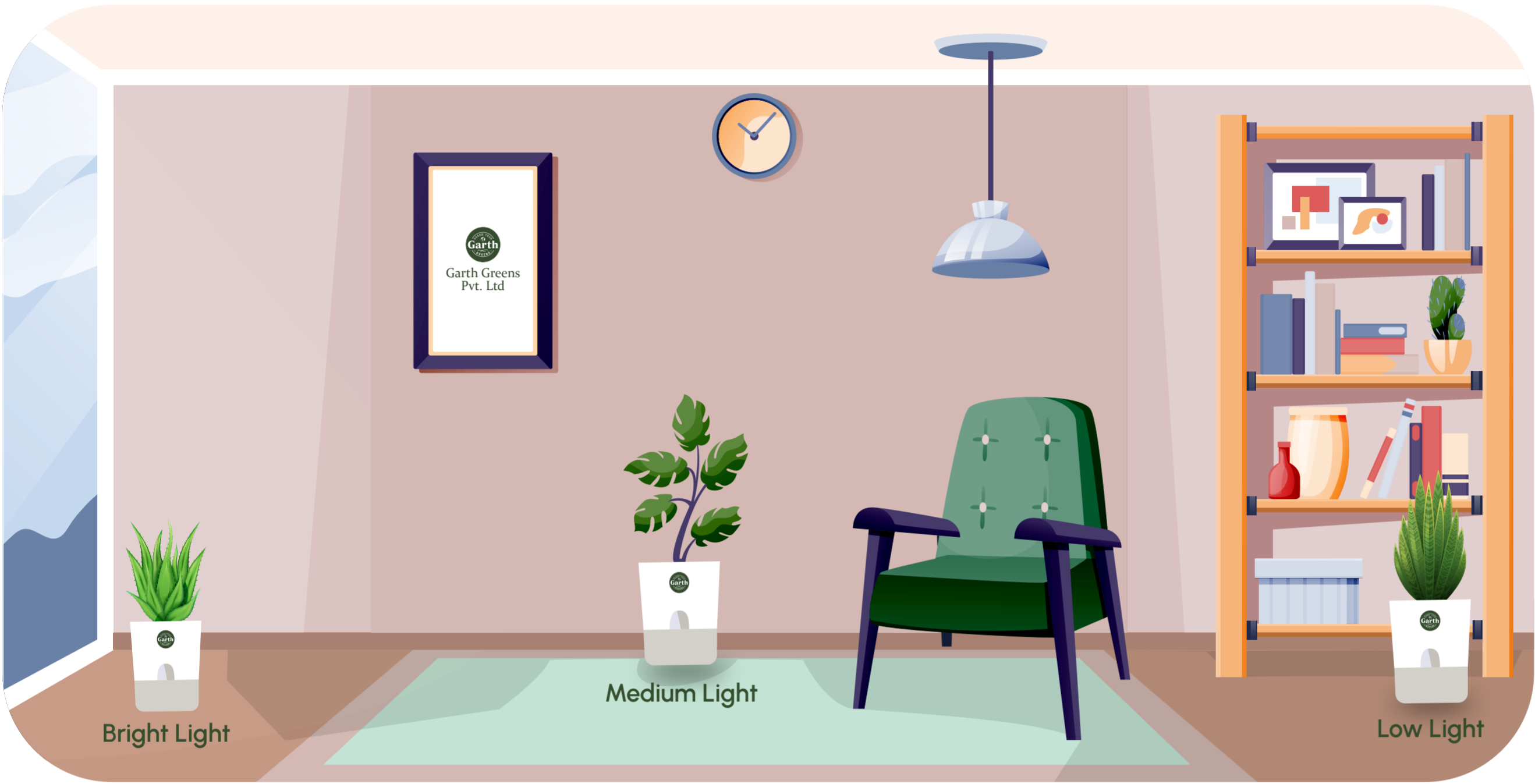
The Broken Heart Plant, with its unique heart-shaped leaves and vibrant colors, is a striking and symbolic addition to any indoor garden. Known for its dramatic beauty and ease of care, it adds a touch of romance and charm to your space.

Origin

Native to tropical regions of Southeast Asia.

Light

Prefers bright, indirect light but can tolerate some direct sunlight. Keep it in a well-lit spot to encourage vibrant foliage and blooming.



Water

Water every 1-2 weeks, allowing the soil to dry out slightly between waterings. Be cautious of overwatering, as this plant is susceptible to root rot.

Humidity

Thrives in high humidity but can adapt to average household levels. Misting the leaves can help maintain the humidity it loves.

Fun Fact:

The Broken Heart Plant gets its name from its heart-shaped leaves, which, according to legend, are believed to symbolize a broken heart. The plant's unique shape and vibrant blooms are often seen as a reminder of love and emotional healing.

Signs of Distress:	Cause:	Solution:
Yellowing or wilting leaves	Overwatering or underwatering	Adjust watering schedule and ensure the soil is well-drained.
Brown spots or edges on leaves	Low humidity or too much direct sunlight	Increase humidity and place in a location with indirect light.

Placement

The Broken Heart Plant adds beauty and symbolic meaning to any space. Here’s where to place it.

Wealth Corner:

Place it in a bright, indirect light spot to enhance energy and add elegance to your space.

Entrance:

Position near the doorway to welcome positive energy and a touch of romance.

Work Desk:

Keep on your desk to inspire creativity and emotional healing.