

About

Aglaonema White Plant

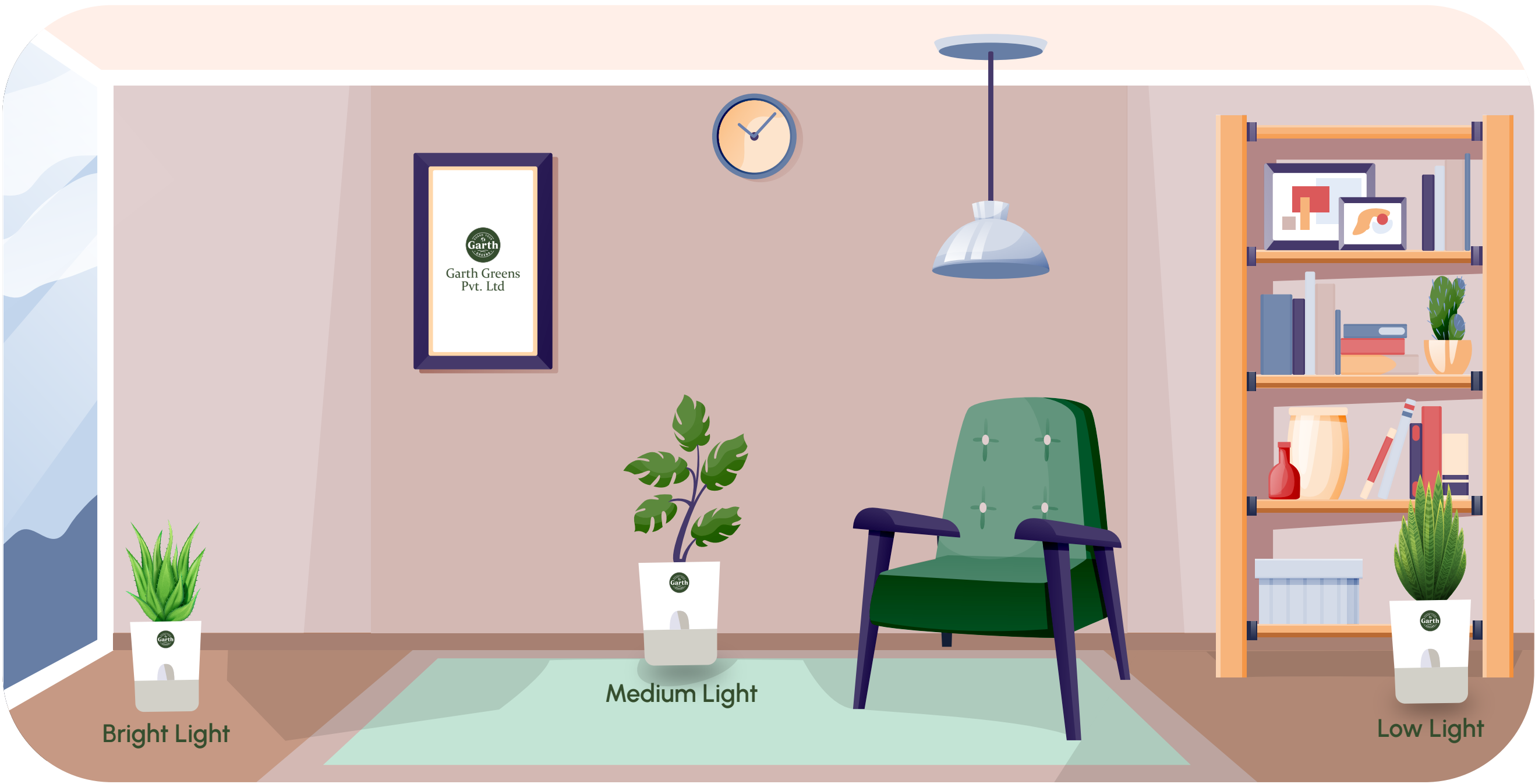
The Aglaonema White is an elegant and low-maintenance plant, renowned for its striking white and green foliage that brings a touch of sophistication to any space. Perfect for both beginners and experienced plant lovers, this plant thrives with minimal care, making it a popular choice for indoor gardening.

Origin

Native to tropical and subtropical regions of Asia and New Guinea.

Light

Prefers bright, indirect light but can tolerate lower light conditions. The white variegation in the leaves is most prominent in brighter light. Avoid placing the plant in direct sunlight, as it can scorch the leaves and dull the white markings.



Water

Water every 1-2 weeks, allowing the soil to dry out slightly between waterings. Overwatering can lead to root rot, so make sure the pot has proper drainage. If the plant is in a brighter light environment, you may need to water more frequently.

Humidity

Thrives in moderate to high humidity but can adapt to average household humidity levels. To keep the plant’s leaves glossy and vibrant, occasional misting or using a humidifier can help, especially in drier indoor environments.

Fun Fact:

The Aglaonema White is not only admired for its beauty but also for its air-purifying abilities. This plant helps improve indoor air quality by removing toxins, making it a great addition to your home or office.

Signs of Distress:	Cause:	Solution:
Yellowing leaves	Overwatering or insufficient light	Adjust watering habits and ensure the plant gets enough light.
Brown leaf tips	Low humidity or inconsistent watering	Increase humidity and establish a consistent watering schedule.

Placement

The Aglaonema White is perfect for enhancing any room with its striking color. Here’s where to place it.

Wealth Corner:

Place it in the southeast corner of your home or office to bring prosperity and positive energy.

Entrance:

Position it near the entrance to invite good fortune and a fresh, welcoming atmosphere.

Work Desk:

Keep it on your desk to encourage creativity and create a calm, focused work environment.