

WISER ODACE INSTALLATION MANUAL

Contents

- i. Unboxing and content description 2
- ii. Downloading and Launching “Wiser Lighting” Mobile Application..... 5
- iii. Pairing..... 6
 - a. Using Smart Switch.....6
 - b. Using the Mobile Application.....7
- iv. Walkthrough Wiser Lighting App.....9
 - a. My devices.....9
 - b. My Groups.....11
 - c. My Controllers.....11
 - d. Updates.....11
 - e. Settings.....12
 - f. Overview.....12

i) Unboxing and Content Description



The following are the items present.

- 1) Wiser Odace Bulb
- 2) Wiser Odace Smart Switch
- 3) User Manual

NOTE : In case the bulb is "Non Screwable" type, it will be required to convert the holder to "Pin Type" Holder. For this Use E27 to B22 Connector. Alternatively, G24-E27 can also be used depending on the type of requirement.

1) Wiser Odace Bulb



The kit will be available in the above variants which is White, Colour and the Aroma kit (from left to right)

2) Wiser Odace Smart Switch

This is the Switch used to control the operation of the bulb. The Switch has the following functions.



LEFT TOP:

- SHORT PRESS for ON/ OFF operations
- LONG PRESS for turning the device (bulb) connected to SMARTPHONE MODE.

RIGHT TOP:

- SHORT PRESS causes the bulb associated to the switch to change its intensity in steps (8% → 20% → 50% → 100%)
- LONG PRESS causes the intensity to change in continuous fashion.

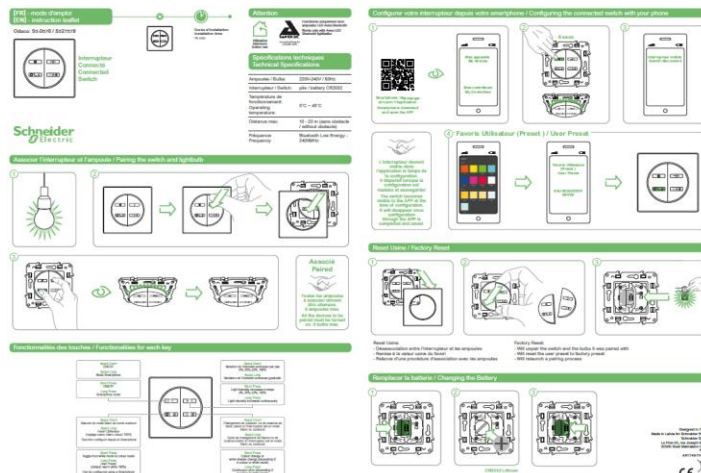
LEFT BOTTOM :

- SHORT PRESS used to toggle between white and coloured light
- LONG PRESS is used for pre-set colours. The Smart Switch operation allows you to pre-set only one colour as your favourite. To carry out this procedure,
 - During the pairing of the smart switch with the application, the application asks the user to select a pre-set colour of choice.
 - Having selected the colour of choice, the colour is added to the pre-set colour category.
 - Thus, when the button is LONG PRESSED, the respective pre-set colour will appear

RIGHT BOTTOM:

- SHORT PRESS colour shade changes
- LONG PRESS Continuous change in colours

3) User Guide



Installation manual is a part of the kit which can be used for guiding the user in installing and operating the product.

ii) Downloading and Launching the Wiser Lighting Mobile Application



This will require the user to go to the app store of the iOS / Android Smartphone. Having installed the mobile application, the following steps are to be followed

STEP 1 : User Registration

- The user is required to provide his login details i.e, the email id and password as part of the registration process.
- **NOTE:** In case the user wishes to operate the same device through another smartphone, he must use the same login details

STEP 2: Turn ON Bluetooth

- Throughout the operation of the application, it requires that the bluetooth of the associated smartphone be turned ON

STEP 3: Turn ON the associated electric switch

- Throughout the operation of the bulb, it requires the main power supply switch to be turned ON

These simple steps enable your phone to be paired with the available devices.

iii) Pairing

The pairing can be carried out in two ways i.e,

- a) Using the smart switch
- b) Using the mobile application

a) Using the smart switch.



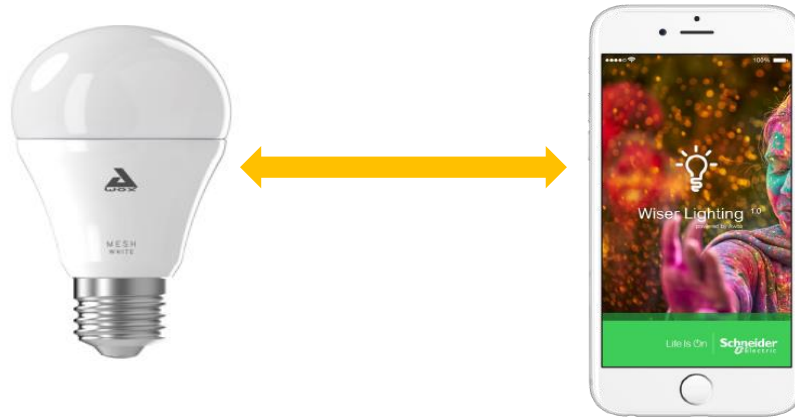
- The box contents i.e., the bulb and the switch that are a part of a unit come pre-paired. There is no pairing to be carried out in this case.
- In order to pair another bulb to the same switch, there is a pairing method to be followed.

STEP 1: Make sure the main power switch is turned on. The unpaired bulb will by default be set to RED colour until pairing

STEP 2: LONG PRESS the diagonally opposite buttons, i.e the TOP RIGHT and the BOTTOM LEFT for approximately 5 seconds or till the bulb blinks. The blinking indicates the pairing process is complete.

NOTE : Only 8 Bulbs can be paired to a Smart Switch.

b) Using the Mobile Application.



Having installed and registered, the mobile application is ready to be paired with any available devices given the Bluetooth of the smartphone is turned ON.

Pairing with mobile application can be carried out using the following steps.

STEP 1: After registering, the smartphone automatically detects the availability of the devices if it is in the range and asks to CONNECT or IGNORE.

STEP 2: On choosing CONNECT, the device can be assigned a name as per the user requirement and choose NEXT.


STEP 3: Further, there is a provision to add this device to pre-set rooms like Living Room, Bed Room etc. The user selects the room of choice and selects to NEXT.

STEP 4: The Bulb Blinks indicating the completion of pairing process.

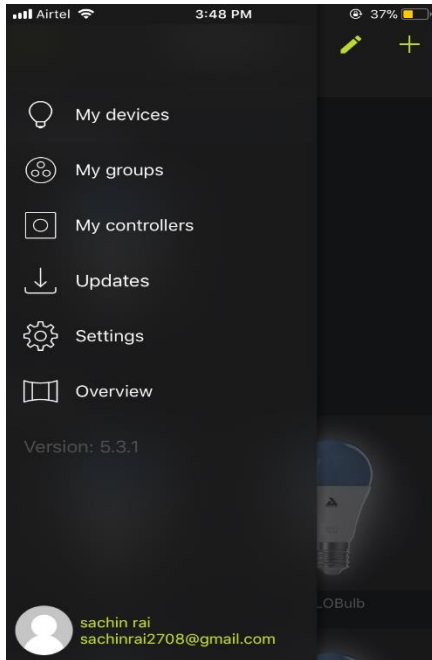
STEP 5: Other devices can be paired to the mobile application by using the "+" option at the TOP RIGHT end of the application page.

NOTE:

- i) Only 50 Bulbs can be paired using the mobile application. However, the procedure of pairing remains common to all

- ii) To UNPAIR the bulb, LONG PRESS on the bulb to be unpaired, Go to  option present in the TOP RIGHT corner of the mobile application page. This completes Unpairing of the bulb


iv) Walkthrough Wiser Lighting App.



The landing page of the Wiser Lighting App is as shown.

These are the various options available as a part of the application. This section of the manual will explain in detail the function of each of these options.

a) My Devices

- This option shows the list of devices that are connected to the Smartphone.
- Each of these bulbs can be edited using the  symbol at the TOP RIGHT corner of the page.
- On Selecting a bulb that is paired to the phone, there are various options to choose from the panel at the BOTTOM of the screen which involve
 - Favourites
 - Palette
 - Themes
 - Sequences
 - Disco
 - Diffuser (In case of the Aroma kit)

➤ Favourites

This option allows the user to have a custom list of colours which can be named and added to the list by name "COLORS" under the PALETTE option.

However, the app has a default list of colours that are already available.

The steps to add other shades to the list are as follows

STEP1: go to the PALETTE provided in the panel at the bottom of MY DEVICE option

STEP2: Select any colour of choice from the colour palette.

STEP3: Select the option that says "Add to Favourites" at the bottom of the PALLETE page.

STEP4: The user is provided with a provision to name the shade of his choice and choose OK. This adds the user's choice of colour to the PALETTE.

➤ Palette

This option allows the user to play with 16+ million shades of colour.

➤ Themes

This option allows the user to toggle between the pre-set themes

➤ Sequences

This option allows the user to toggle between the pre-set sequences.

➤ Disco


This is a unique option that programs the bulb to sync with the beats of the music. This option directly links the playlist of the mobile phone and syncs the bulb with the beats.

➤ Programs


This option allows the user to program the operation of the device as per his requirement. This option involves,

- a) Time Based Scheduling: This option allows you to operate the bulb to a required set time.
- b) Presence Simulator: Used to simulate presence in the building for a set time indicating the existence of people in that building.
- c) Dawn Simulator: Operates closely as an alarm device. It involves settings for Wakeup time, turn off time, duration for which light remains ON etc.
- d) Nightlight: Operations similar to Dawn simulator

b) My Groups

- This Option allows the user to group the paired devices as per his choice and allows the user to carry out all the operations at once to all the devices present in that group.
- The steps to be followed are mentioned below
 - Step1:** Go to MY GROUPS in the option dropdown of the mobile application.
 - Step2:** Go To “+” Button at the TOP RIGHT corner which enables the user to ADD new GROUPS.
 - Step3:** The User has the provision to name the group as per his choice.
 - Step4:** Following this, the user can select the devices that he wants to add to the group from the list of available devices.
 - Step5:** Go to  on the TOP RIGHT corner of the screen. Thus, a new GROUP is added.

c) My Controllers

- This Option shows the list of smart switches paired to the mobile application.
- To Pair the Smart Switch to the Mobile Application the following steps are to be referred to,
 - Step1: Go to MY CONTROLLERS in the dropdown list of options of the mobile application
 - Step2: Go To “+” Button at the TOP RIGHT corner which enables the user to ADD new CONTROLLER
 - Step3: Following the instructions prompted by the mobile app, LONG PRESS the TOP LEFT power button for 5 secs. The paired Smart Switch will appear on the screen automatically.
 - Step4: Following this, the pairing procedure remains the same.
 - Step5: Once the pairing is complete, the application allows the user to select the bulbs that are to be operated using the smart switch.
- To UNPAIR, LONG PRESS the controller and go to  at the TOP RIGHT corner of the screen.

d) Updates

- This option allows the user to know the available updates of the application.

e) Settings

- NOTE: Most of the options are yet to be developed for User Experience.

f) Overview

- This option contains the brief description of the app for better User Experience.



Switch more than just lights. #SwitchTheMood



Wiser Odace™ LIGHTING.

Life Is On



Life Is On

