

## **TROPICOOOL CCTV Mobile DVR**

- **4 Channel Mobile DVR**
- **8 Channel Mobile DVR**



### **Main Features :**

- **Metal Casing** ,strong hardware which sustains vehicle vibrations.
- **Water proof, Dust Proof, Tamper proof** metal housing.
- **Vibration & Shock Proof.**
- **High Temperature & Humidity Operation.**
- **Live Monitoring and tracking** - Real Time Data Access.
- **Inbuilt Super Capacitors** which gives back up of 30 sec to save buffer data immediately in case of power supply cut off because of an accident. This feature helps to capture important videos in an accident.
- **Smart Power management**- Power supply to all cameras including reverse camera & monitor is controlled by MDVR.
- **Vehicle Battery Protection** -Auto shuts down the MDVR device under low battery of vehicle. Never drains the vehicle battery and Ultra-low standby power consumption .
- **Short Circuit Protections** on Power Cable, Camera Cable to avoid fire caused by wrong wirings or short circuits during rain / accidents etc.
- MDVR has **Reverse camera trigger** and will show the rear view in Surveillance Monitor i.e. all in one solution. No need to buy separate reverse camera or Monitor MDVR shows Parking guidelines in Monitor for assisting driver in reverse gear.
- **Instant Playback** of video in 7" TFT Monitor , Which helps in getting immediate proof of any incidents found in vehicle.
- **SD Card lock** with Special key , no chance of losing SD card.
- Professional In-Vehicle power design, **9-32V DC Wide Voltage Range.**
- **4 Pin aviation** -Power and data in one single cable.
- ARAI Certified as per standard **AIS004 Part 3.**
- **20 Years of Expertise** in Camera Systems.

Technical Parameters:		
Item	Device parameter	Performance
System	Main processor	Hi3520DV200
	Operating system	Embedded Linux OS
	Operating language	Chinese/English
	Operating interface	GUI, Support mouse
	Password security	User password/Admin password
Audio & Video	Video standard	PAL/NTSC
	Video compression	H.264
	Image resolution	720P /960H/D1/CIF
	Playback quality	720P /960H/D1/CIF
	Compound mode	4CH/8CH 720P/4ch 960H/2ch 720P+2ch 960H
	Decoding ability	1ch 720P real time
	Recording quality	Class 1-6 optional
	Image display	Single/QUAD display optional
	Audio Compression	G.726
	Audio recording	Audio & Video synchronized recording
Recording & Playback	Recording mode	Manual/Alarm
	Video bit rate	Full frame 4096Mbps, 6 classes image quality optional
	Audio bit rate	8KB/s
	Storage media	SD card storage
	Video inquiry	Inquiry by channel/Recording type
	Local playback	Playback by file
Firmware	Upgrading mode	Manual/Automatic/Remote

upgrading	Upgrading method	USB disk/Wireless network
Interface	AV input	4ch aviation interface
	AV output	1ch VGA video output, 1ch aviation AV output
	Alarm input	4 digital inputs (2 Positive trigger, 2 negative trigger)
	SD card	1 SDXC High speed card (up to 256G)
	USB interface	1 USB 2.0 (support U disk/mouse)
	Ignition input	1 ACC signal
	UART	1 LVTTL Level
	LED Indication	PWR/RUN/SD/ALM
	SD card lock	1
	Debug port	1
Function extention	GPS	Support detecting antenna Plug in/Unplug/Short circuit
	WIFI	802.11b/g/n, 2.4GHz
	3G/4G	Supports CDMA/EVDO/GPRS/WCDMA/FDD LTE/TDD LTE
Others	Power input	9~32V DC
	Power output	5V 300mA
	Power consumption	Standby 3mA Maximum consumption 18W @12V 1.5A @24V 0.75A
	Working temperature	-20 --- 70°C
	Storage	720P 1G/h/channel 960H 750M/h/channel
	Dimension	142*152*32 mm

**Various MDVR Models:**

**MODEL : MR9504C**

4 Channel MDVR



- 4CH 720P SD MDVR
- AHD/Analog/TVI/CVI
- 720P/960H/D1/CIF optional
- 1 x SD(max.256G)
- 4 x Alarm Input
- Built-in GPS(optional)
- CVBS output
- Input Power : 9-36V DC
- Supports SD Card
- Built-in Super Cap
- Smart Power Management
- Short Circuit Protection
- Power consumption :  
Standby 3mA Maximum  
consumption 18W @12V  
1.5A @24V 0.75A
- Variants Available :  
MR9504, MR9504-SG,  
MR9504-WG

**MODEL : MR9704C**

8 Channel MDVR



- 4CH 720P HD SD MDVR
- AHD/Analog/TVI/CVI/IPC (optional)
- 720P/960H/D1/CIF optional
- 1 x SD (max.256G) + 1 x HDD (max.2T)
- 4 x Alarm Input
- 1 x Alarm Output
- 1 x LVTTTL(RS232/RS485)
- 1 x LAN port (6 PIN to RJ45) (optional)
- 3G/4G/WiFi/GPS(optional)
- VGA+CVBS output
- Power Input : 9-36V DC
- Built-in Super Cap
- Smart Power Management
- Short Circuit Protection
- Support UPS
- Supports Hard Disk
- Support awake remotely
- Power Consumption :  
Standby 3mA Maximum  
consumption 18W @12V  
1.5A @24V 0.75A
- Variants Available: MR9704-SG, MR9704-WG

**MODEL : MR9708C**

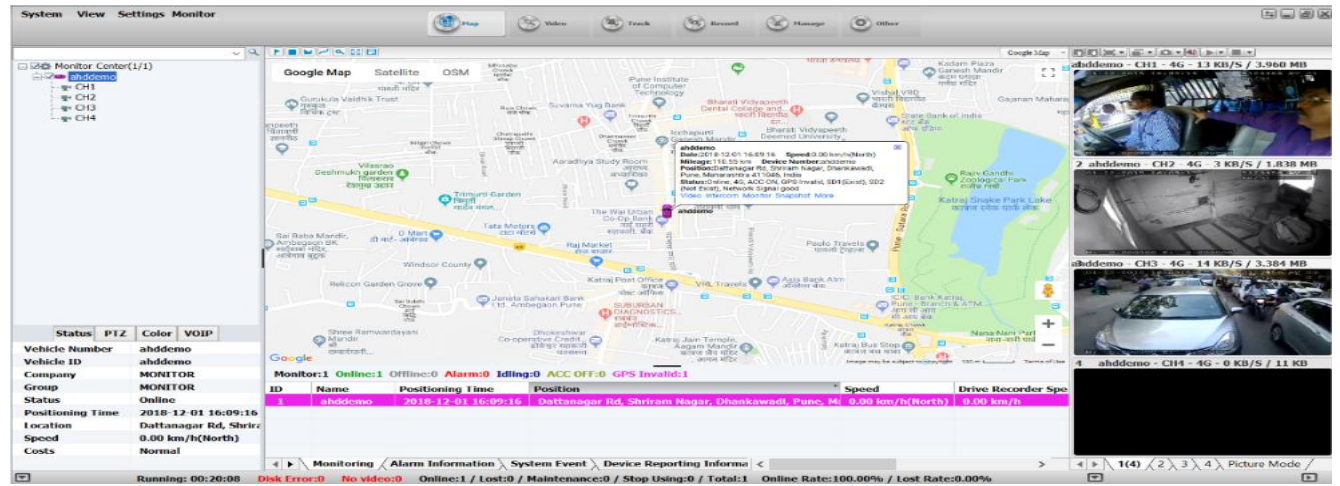
8 channel MDVR with Wi-fi + GPS + 4G



- 8CH 720P HD SD MDVR
- AHD/Analog/TVI/CVI/IPC (optional)
- 1080N/720P/960H/D1/CIF optional
- 1 x SD(max.256G)+1 x HDD(max.2T)
- 4 x Alarm Input
- 1 x Alarm Output
- 1 x LVTTTL(RS232/RS485)
- 1 x LAN port (6 PIN to RJ45) (optional)
- 1 x Disaster Recovery interface(USB,5PIN)
- 3G/4G/WiFi/GPS(optional)
- VGA+CVBS output
- Power Input : 9-36V DC
- Built-in Super Cap
- Smart Power Management
- Short Circuit Protection
- Support UPS
- Supports Hard Disk
- Support awake remotely
- Power Consumption :  
Standby 3mA Maximum  
consumption 18W @12V  
1.5A @24V 0.75A
- Variants Available:  
MR9708-SG, MR9708-WG

## CMSV6 Software:

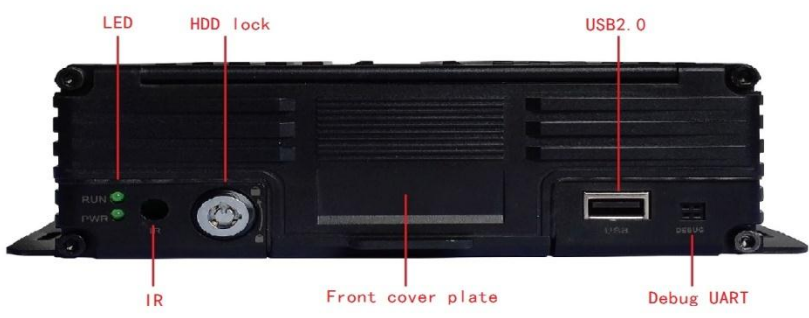
- Remotely Control vehicles at control centre.
- Supports Multiple Vehicles GPS location tracking and Monitoring.



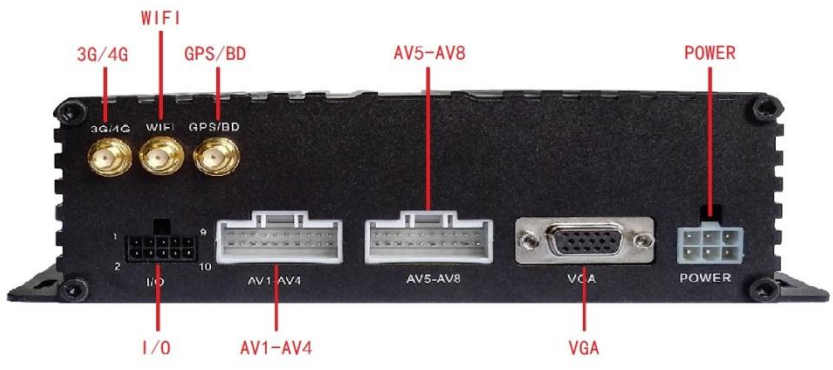
## Pictures of 4CH/8CH MDVR Front and Back Panel:

### 8 Channel MDVR:

#### Front Panel:

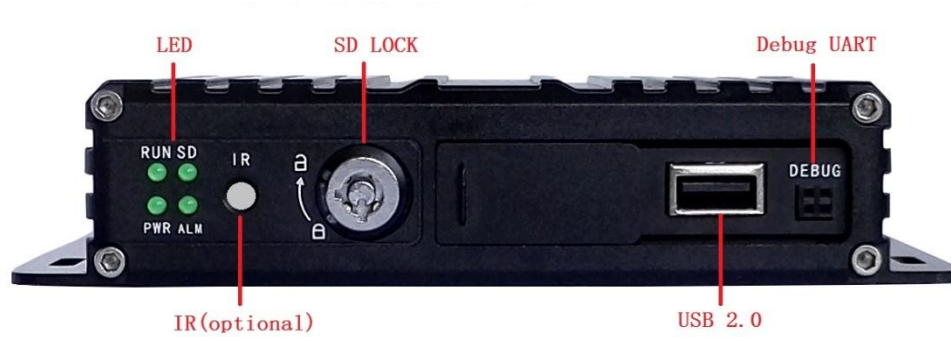


#### Back Panel:

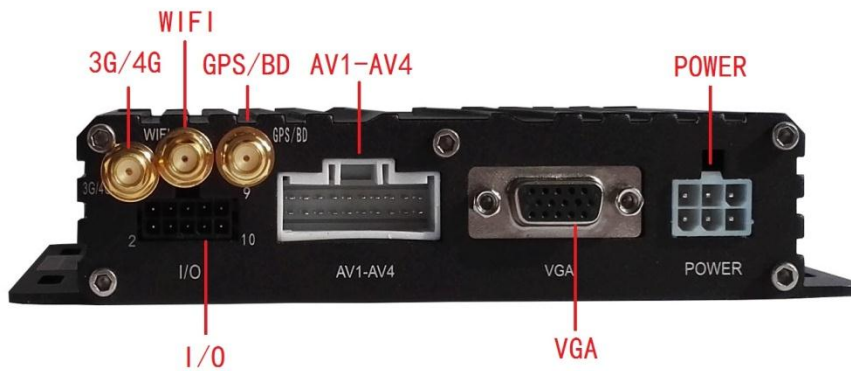


## 4 Channel MDVR:

### Front Panel:



### Back Panel:



A-1, Kumar Classics, Aundh, Pune - 411 007, Tel.: (020) 25881704, Fax: (020) 2588 0851

E-mail: [info@tropicoolindia.com](mailto:info@tropicoolindia.com)

Website: [www.tropicoolindia.com](http://www.tropicoolindia.com) **Tropicool Car Gadgets Pvt. Ltd.**

**Luxury & Safety On The Wheels ... For The People On The Move**