



Introduction to Seagrass

- 1) Identify the type of seagrass sample you have.
- 2) Prepare 1 or more slides of the different parts of the seagrass. Ex: leaf, rhizome...
- 3) Make a drawing of the sample you see with the Foldscope. Identify any parts of the cells that you can. Make notes about what you see and any questions that you have in the space below and on the back side of the paper.

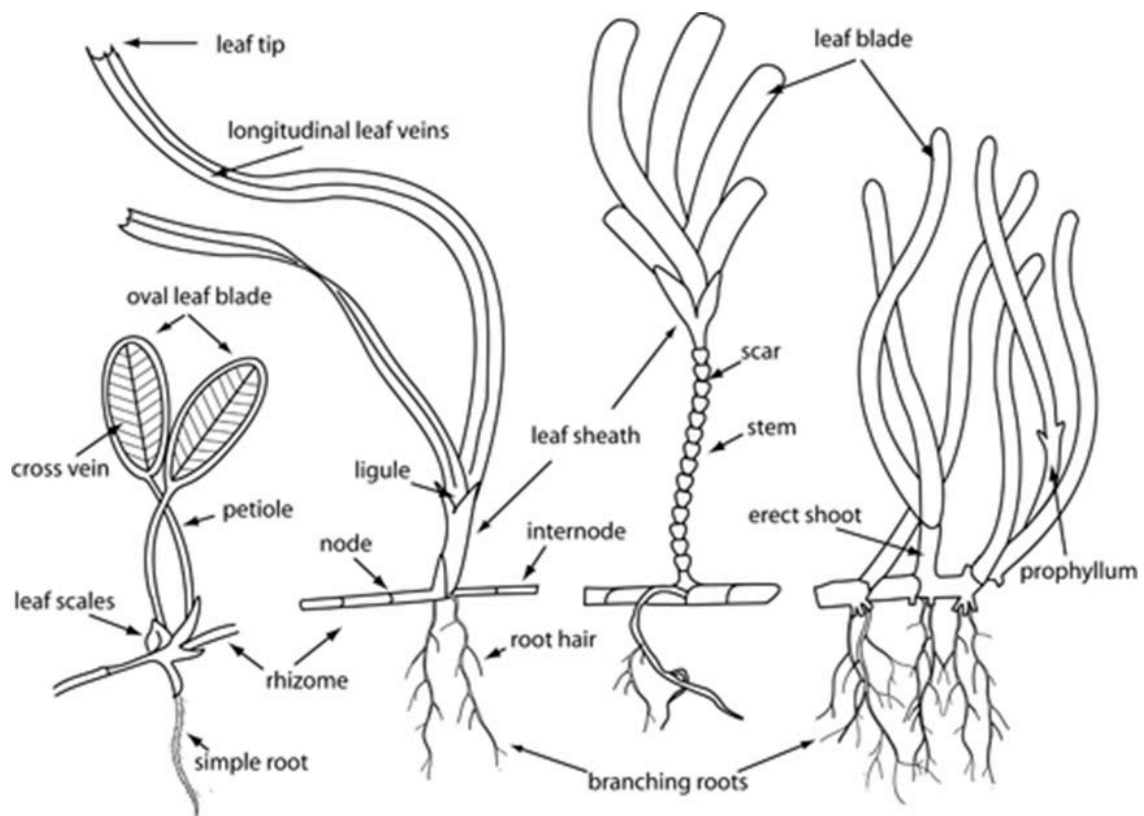


Illustration credit: World Seagrass Association for Conservation International



BIG BLUE
NETWORK