

A Specially Designed Initiative
to Encourage Young Talent by



TALLENTEX 2017 : (09, October 2016)

PAPER CODE

O



TALLENTEX

ALLEN'S Talent Encouragement Exam

2017

CLASS - 9th (IX)

Duration: 2 Hrs. | Maximum Marks : 320

Tallentex Roll No.

5

Answer Sheet No.

T

5

Please read the instructions carefully. You are allotted 5 minutes specifically for this purpose.

Things NOT ALLOWED in EXAM HALL : Blank Paper, clipboard, log table, slide rule, calculator, camera, mobile and any electronic or electrical gadget. If you are carrying any of these, then keep them at a place specified by invigilator at your own responsibility.

INSTRUCTIONS

1. This Booklet is your Question Paper. DO NOT break seal of Booklet until the invigilator instructs to do so.
2. Fill your TALLENTX Roll No. & Answer Sheet No. in the space provided on the cover page.
3. Carefully fill your **PAPER CODE** and present **CLASS** in space provided (**Serial No. 6 & 12**) of optical response sheet.
4. Please make sure that paper you received is of your class only.
5. The Answer Sheet is provided to you separately which is a machine readable Optical Response Sheet (ORS). You have to mark your answers in the ORS by darkening bubble, as per your answer choice, by using black or blue ball point pen.
6. After breaking the Question Paper seal, check there are **16 pages** in the booklet. This Question Paper contains 80 MCQs with 4 choices (Subjects: Physics: 15, Chemistry: 15, Biology: 15, Maths: 15 & Mental ability: 20).
7. Think wisely before darkening bubble as **there is negative marking for wrong answer**. Answer once marked by pen cannot be cancelled.
8. Marking Scheme:
 - a. If darkened bubble is RIGHT answer : 4 Marks.
 - b. If darkened bubble is WRONG answer: -1 Mark (Minus One Mark).
 - c. If no bubble is darkened in any question: No Mark.
9. If you are found involved in cheating or disturbing others, then your ORS will be cancelled.
10. Do not put any stain on ORS and hand it over back properly to the invigilator.
11. You can take along the question paper after the test is over.

ALLEN RESULT: JEE ADVANCED-2016

4 in Top 10 | 12 in Top 50 | 25 in Top 100 AIR



AIR : 2 Bhavesh Dhingra Classroom	AIR : 3 Kunal Goyal Classroom	AIR : 9 Gaurav Didwania Classroom	AIR : 18 Rohan Garg Classroom	AIR : 19 Animesh Bohra Distance	AIR : 23 Ritesh Goenka Classroom
AIR : 27 Vikrant Garg Classroom	AIR : 29 Sharvik Mittal Classroom	AIR : 33 Ishan Tarunesh Distance	AIR : 36 Naman Jain Classroom	AIR : 48 Sushil Khyalia Classroom	

Total Selections

3883

Classroom : 2857 | Distance : 1026

ALLEN RESULT: NEET (UG)-2016

7 in Top 10 | 35 in Top 50 | 58 in Top 100 AIR



AIR : 2 Ekansh Goyal Classroom	AIR : 3 Nikhil Bajiya Classroom	AIR : 4 Ashank Khaitan Distance	AIR : 6 Dyuti Shah Distance	AIR : 7 Japnoor Kaur Distance	AIR : 10 Utkarsh Anand Classroom
AIR : 12 Prakhar Bansal Classroom	AIR : 13 Lajjaben Patel Classroom	AIR : 15 Gurasis Singh Distance	AIR : 18 Swetank Anand Classroom	AIR : 19 Mahak Kr. Surana Classroom	AIR : 20 Prachi Singh Classroom

Total Qualified

33106

Classroom : 26198 | Distance : 6908

ALLEN RESULT: AIIMS-2016

8 in Top 10 | 25 in Top 36



AIR : 3



Lajjaben Patel
Classroom

AIR : 4



Het Sanjay Shah
Classroom

AIR : 5



Mridul Sharma
Classroom

AIR : 6



Dyuti Shah
Distance

AIR : 7



Aishvarya Gupta
Classroom

AIR : 8



Kushagra Pandey
Distance

AIR : 9



Ekansh Goyal
Classroom

AIR : 11



Ira Pachori
Distance

AIR : 12



Ritik M Goyal
Classroom

AIR : 13



Amol Sood
Classroom

AIR : 17



Ashank Khaitan
Distance

AIR : 19



Dhruvil D. Shah
Classroom

AIR : 20



Swetank Anand
Classroom

AIR : 21



Ankush Garg
Classroom

AIR : 23



Sanil Garg
Distance

AIR : 25



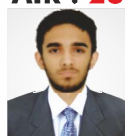
Aditya Agarwal
Distance

AIR : 27



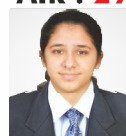
Vishal Saini
Distance

AIR : 28



Gurasis Singh
Distance

AIR : 29



Manavi Gupta
Classroom

AIR : 30



Anubhav Das
Distance

AIR : 31



Prachi Singh
Classroom

AIR : 32



Japnoor Kaur
Distance

AIR : 33



Ayush Jain
Classroom

AIR : 36



Sukriti Chaudhri
Distance

Total Qualified

602

Classroom : 405 | Distance : 197

ALLEN RESULT: JEE Main-2016

8 in Top 100 | 25 in Top 200 | 65 in Top 500 | 136 in Top 1000

AIR 30



Syamantak Kumar
Classroom

AIR 45



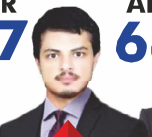
Mudit Surana
Classroom

AIR 47



Utkarsh G. Patel
Classroom

AIR 57



Bhavishya
Distance

AIR 68



Kapil Shobhnani
Classroom

AIR 71



Aman Bansal
Classroom

AIR 90



Ambatwar Ajinkya G.
Distance

AIR 95



Surya Suresh
Distance

AIR-105



Megh V. Thakkar
Classroom

AIR-112



Shashwat Agrawal
Classroom

AIR -127



Rohan Garg
Classroom

AIR -130



Aneey Ravindra Patil
Distance

AIR-132



Akash Bhardwaj
Classroom

AIR-137



Rahul Agrawal
Classroom

AIR-145



Sharvik Mital
Classroom

AIR-151



Shashwat Shivam
Distance

AIR-158



Ankit Dhanekar
Classroom

AIR-168



Sukriti Gupta
Distance

AIR-169



Georgi Joseph Boby
Distance

AIR-171



Rushikesh Vitthal
Distance

AIR-177



Koustav Yacha
Classroom

AIR-178



Rahul M. Chanduka
Classroom

26660

Students secured JEE Main
All India Ranks from all Courses of ALLEN

AIR-185



Gavali H. Abhiman
Distance

AIR-190



Atri Dutta
Distance

AIR-197



Vansh J. Chiripal
Classroom

Authenticity of Result : Power of **ALLEN**

TALLENTEX Success Power Session & Rewards Ceremony

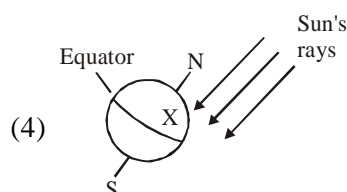
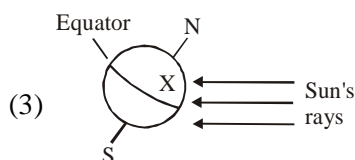
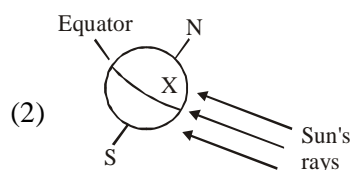
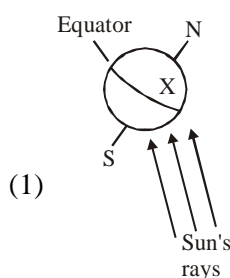
(29 November 2015)



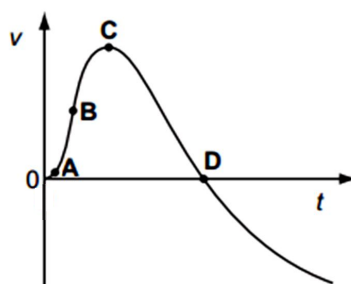
SECTION - A : PHYSICS

This section contains **15 Multiple Choice Questions**. Each question has four choices (1), (2), (3) and (4) out of which **ONLY ONE** is correct.

1. Which of the following diagrams best represents the angle at which the Sun's rays strike location X at noon on June 21?

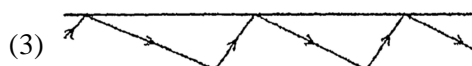
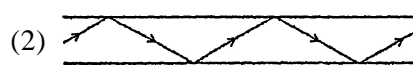
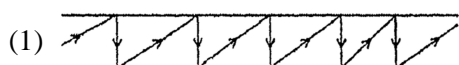


2. The graph shows how the velocity ' v ' of a firework rocket changes with time t . At which point on the graph does the rocket have the greatest acceleration?



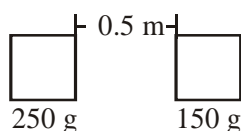
- (1) A (2) B (3) C (4) D

3. Which diagram correctly represents reflection of light along an optical fibre?

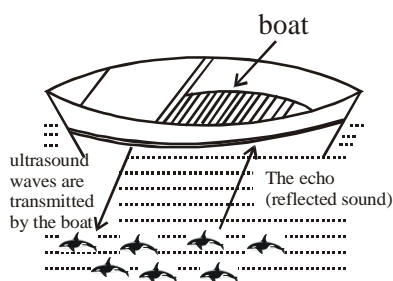


4. A bomb at rest explodes into two pieces of equal mass. Then the pieces will fly off
- (1) in the same direction with equal speeds (2) in the same direction with unequal speeds
- (3) in opposite direction with equal speeds (4) in opposite directions with unequal speeds
5. If the velocity of car is increased by 20% then the minimum distance in which it can be stopped increases by
- (1) 44% (2) 55% (3) 66% (4) 88%

6. A sound tone is produced in water, when it enters air
 (1) λ decreases, and f does not change (2) both λ and f increase
 (3) both λ and f decrease (4) λ increases and f does not change
7. What event will produce the greatest increase in the gravitational force between the two masses ?



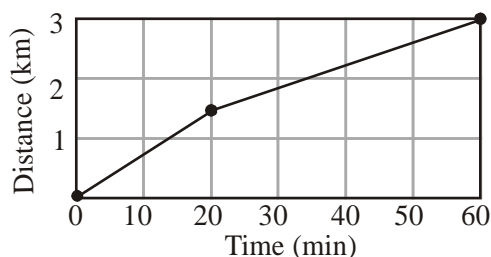
- (1) doubling the large mass
 (2) doubling the distance between the masses
 (3) reducing the small mass by half
 (4) reducing the distance between the masses by half.
8. The diameter of Saturn is almost ten times that of the Earth, yet its density is much less. This can best be explained by the fact that Saturn
 (1) is farther from the Sun (2) is a gaseous planet
 (3) has a shorter period of rotation (4) has a ring around its center
9. A fish finder sends ultrasonic waves down the water to determine the location of the fish.



The same principle of reflection of sound is used in

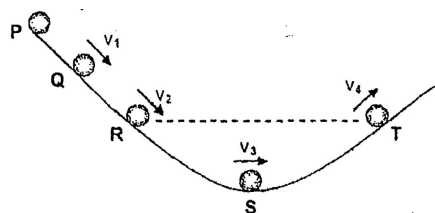
- (1) Sonic boom (2) Sonar
 (3) Echocardiography (4) Ultrasonography
10. If the density of earth increases by 20% and radius decreases by 20% then the new value of "g" on the surface of earth will be :
 (1) 0.8 g (2) 0.90 g (3) 0.96 g (4) g
11. A plane mirror forms a virtual image. The distance between Mahima and her image in a plane mirror is 10 m. How much distance should she move in order to get the distance of 5 m between herself and her image ?
 (1) 2.5 m away from the mirror (2) 2.5 m towards the mirror
 (3) 5 m away from the mirror (4) 5 m towards from the mirror

12. The graph below shows distance over time.



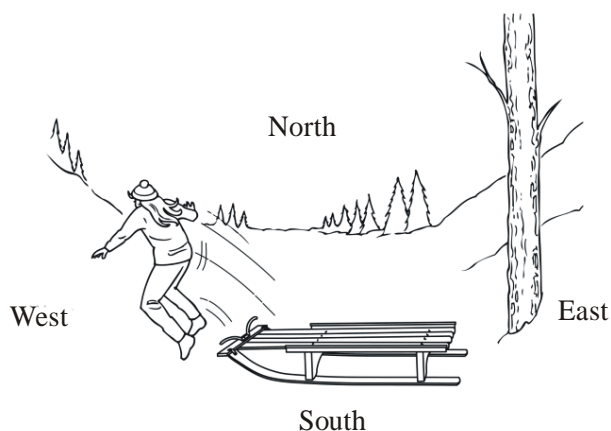
Which of these situations could be represented by this graph?

- (1) A student walks 1.5 km to a friend's house in 40 minutes. The two students then walk another 1.5 km to school in 20 minutes.
 - (2) A student walks 1.5 km to a friend's house in 20 minutes. The two students then walk another 1.5 km to school in 40 minutes.
 - (3) A student walks 1.5 km to a friend's house in 30 minutes. The two students then walk another 1.5 km to school in 30 minutes.
 - (4) A student walks 1.5 km to a friend's house in 20 minutes. The two students then walk another 1.5 km to school in 60 minutes.
13. P, Q, R, S and T are five points on a smooth curved rail. Point R is directed along point T as shown in the diagram.



A marble released from rest at point P slides along the rail. The speeds of the marble at points Q, R, S and T are v_1 , v_2 , v_3 and v_4 respectively. Then which of the following relation is correct?

- (1) $v_4 > v_3 > v_2 > v_1$
 - (2) $v_1 > v_2 > v_3 > v_4$
 - (3) $v_4 = v_2 > v_3 > v_1$
 - (4) $v_3 > v_4 = v_2 > v_1$
14. A student jumps off a sled toward the west after it stops at the bottom of an icy hill.



In what direction will the sled most likely move as the student jumps off?

- (1) North
- (2) South
- (3) East
- (4) West

15. The minute hand of a clock is 4 cm long. The average velocity of the tip of the minute hand between 11:00 am to 11:30 am is
- (1) 1.5×10^{-5} m/s (2) 4.5×10^{-5} m/s (3) 1.8×10^{-6} m/s (4) 3.5×10^{-6} m/s

SECTION-B : CHEMISTRY

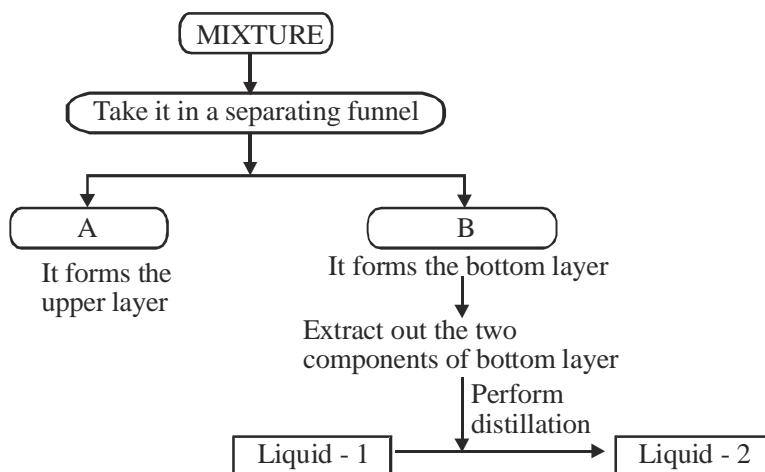
This section contains **15 Multiple Choice Questions**. Each question has four choices (1), (2), (3) and (4) out of which **ONLY ONE** is correct.

16. Arrange the different types of coal in the increasing order of their quality.
- (a) Lignite (b) Peat (c) Anthracite (d) Bituminous
- (1) acdb (2) dbca (3) badc (4) bcda
17. German silver is an alloy of
- (1) Cu, Ni and Sn (2) P, Cu and Ag (3) Cu, Zn and Sn (4) P, Cu and As
18. Element used for making solar cells, transistors and computer chips is
- (1) Phosphorus (2) Silicon (3) Iron (4) Sulphur
19. Total amount of heat produced by a fuel having calorific value of 30 kJ/kg was found to be 60,000 Joules. How much fuel was burnt ?
- (1) 2000 kg (2) 200 kg (3) 20 kg (4) 2 kg
20. Forest fire is an example of
- (1) slow combustion (2) rapid combustion
- (3) spontaneous combustion (4) explosion
21. The liquid and its vapours at boiling point are at equilibrium. The molecules of the two phases have equal
- (1) potential energy (2) forces (3) total energy (4) kinetic energy
22. The boiling points of diethyl ether, acetone and n-butyl alcohol are 35°C, 56°C and 118°C respectively. Which one of the following correctly represents their boiling points in kelvin scale?
- (1) 306 K, 329 K, 391 K (2) 308 K, 329 K, 392 K
- (3) 308 K, 329 K, 391 K (4) 329 K, 392 K, 308 K
23. The solubility of potassium chloride in water at 20°C is 34.7 g in 100 g of water. The density of solution is 1.3 g/ml. Calculate the % of mass/volume concentration of potassium chloride.
- (1) 25.76% (2) 33.49% (3) 24.7% (4) 1.3%
24. Which one of the following processes results in the formation of a new chemical compound ?
- (1) Dissolving common salt in water (2) Heating water
- (3) Heating platinum rod (4) Heating calcium carbonate
25. Water is used to extinguish fire because water
- (1) raise the ignition temperature of the burning substance.
- (2) lowers the ignition temperature of the burning substance.
- (3) cools the burning substance to a temperature below its ignition temperature.
- (4) conducts the heat.

26. The table shows the melting and boiling points of four pure substances.
Which substance is a liquid at room temperature and rapidly evaporates if left exposed to air?

Substance	Melting point/ $^{\circ}\text{C}$	Boiling point/ $^{\circ}\text{C}$
A	-100	-35
B	-7	58
C	-6	225
D	44	280

- (1) A (2) B (3) C (4) D
27. Goldsmith uses ____ zone of the flame for melting gold.
(1) Outermost zone (2) Middle zone (3) Innermost zone (4) Both (2) & (3)
28. Arrange the given combustible substances in decreasing order of calorific value.
(a) Hydrogen (b) Charcoal (c) Petrol
(d) L.P.G (e) Wood
(1) b c a d e (2) a d c b e (3) b a d e c (4) b a c e d
29. Which of the following statements is true about the evaporation of water from an open container?
(1) Evaporation is slower when there is a breeze.
(2) Evaporation takes place faster on a humid day.
(3) The process of evaporation gives off energy.
(4) Some water particles leave the surface and become part of the air.
30. Identify A and B in the given flow-chart.



- (1) (A)-Kerosene and Water, (B)-Common salt
(2) (A)-Oil and Water, (B)-Common salt
(3) (A)-Oil, (B)-Alcohol and Water
(4) (A)-Water, (B)-Common salt and Oil

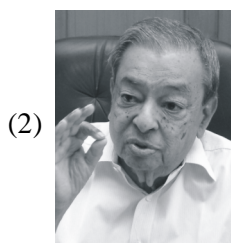
SECTION-C : BIOLOGY

This section contains **15 Multiple Choice Questions**. Each question has four choices (1), (2), (3) and (4) out of which **ONLY ONE** is correct.

31. Who is/are "Father of Green Revolution" ?



Norman borlaug

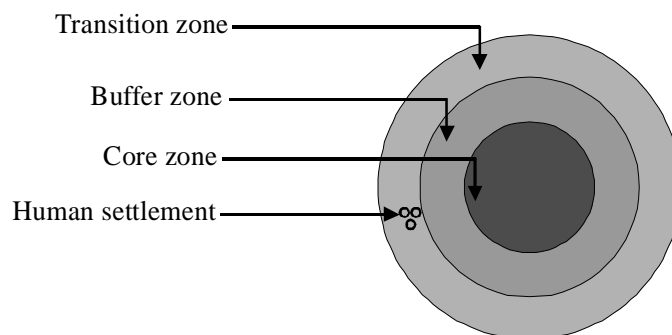


Dr. V. Kurein

(3) Norman borlaug and Dr. V. Kurein both are the Father of Green Revolution.

(4) None of these

32. Select the zone from the below image where no human activity is allowed.

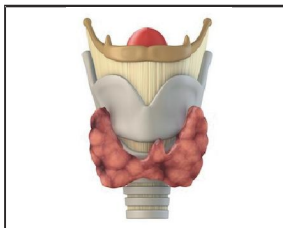


(1) Transition zone (2) Core zone (3) Buffer area (4) None of the above

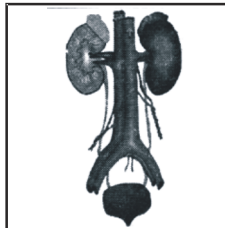
33. Shown here are some drawings of structures that are found in our bodies. They are all at different magnifications.



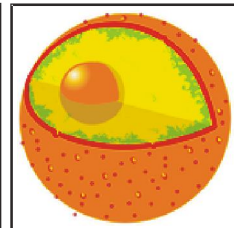
Blood vessel



Thyroid gland



Organs

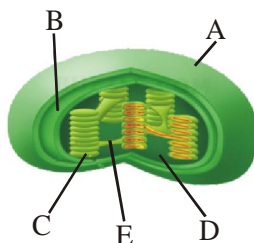


Nucleus of a cell

Which one of them is drawn at the highest magnification?

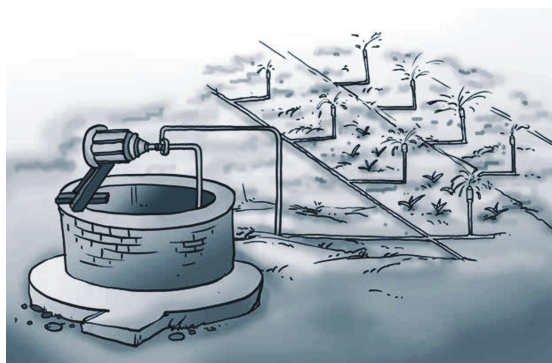
(1) Blood vessel (2) Thyroid gland (3) Organs (4) Nucleus of a cell

34. Identify A to E in the sectional view of a chloroplast given below.



- (1) A-Inner membrane, B-Granum, C-Outer membrane, D-Stromal lamellae E-Stroma
- (2) A-Outer membrane, B-Inner membrane, C-Thylakoid D-Stroma, E-Stromal lamellae
- (3) A-Thylakoid, B-Outer membrane, C-Stroma, D-Stromal lamellae, E-Granum
- (4) A-Outer membrane, B-Stroma, C-Inner membrane, D-Granum, E-Thylakoid

35. Which of the following option is correct regarding the diagram given below?



Sprinkler system of irrigation

- (1) It is useful for sandy soil and even land.
- (2) It is useful for loamy soil and even land.
- (3) It is useful for loamy soil and uneven land.
- (4) It is useful for sandy soil and uneven land

36. Find out the correct sentences about manure.

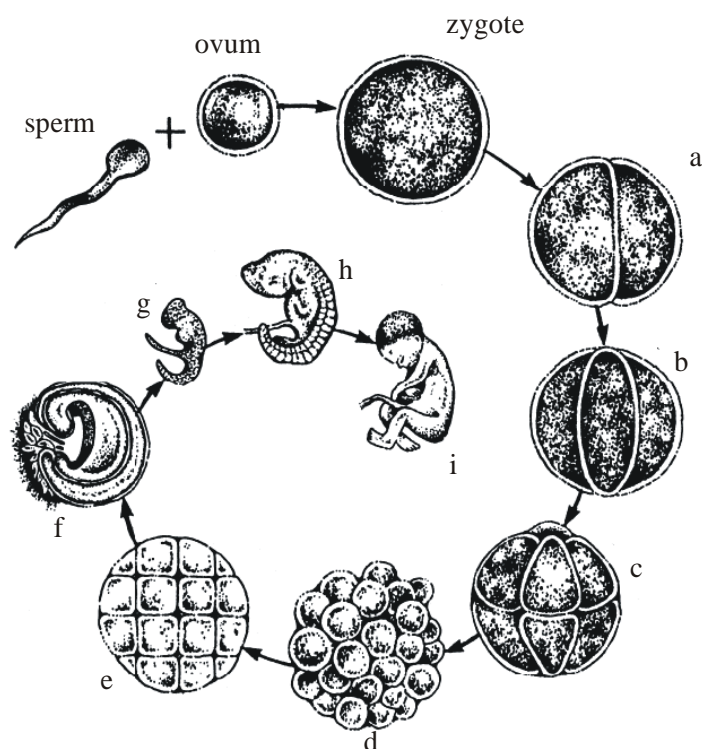
- (i) Manure reduces soil erosion.
- (ii) Manure improves the texture of soil by adding organic matter.
- (iii) Manure decreases water holding capacity.
- (iv) Manure decreases the number of friendly microbes.

- | | |
|--------------------|--------------------|
| (1) (i) and (iii) | (2) (i) and (ii) |
| (3) (ii) and (iii) | (4) (iii) and (iv) |

37. The Black Rhino is killed for its

- | | | | |
|-----------|---------|----------|----------|
| (1) Ivory | (2) Fur | (3) Horn | (4) Meat |
|-----------|---------|----------|----------|

38. The new baby's genetic / inherited material is carried in the



(1) sperm cell

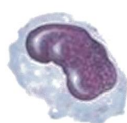
(2) ovum

(3) sperm cell and ovum

(4) sperm and body cell

39. Which of the following blood cells are phagocytic in nature?

Blood Cells



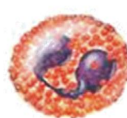
Monocyte



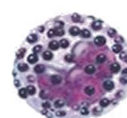
Lymphocyte



Neutrophil



Eosinophil



Basophil



Erythrocyte



Platelets

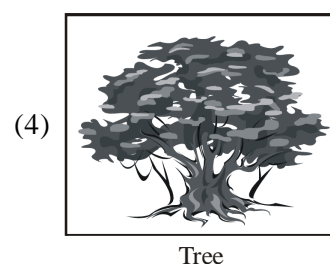
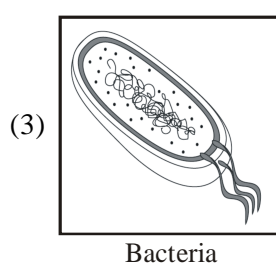
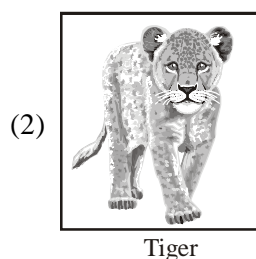
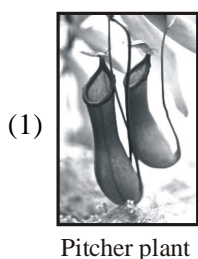
(1) Eosinophil and Basophil

(2) Erythrocyte and Monocyte

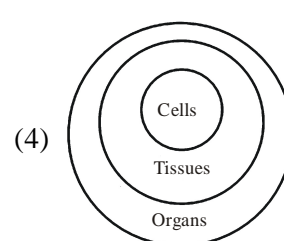
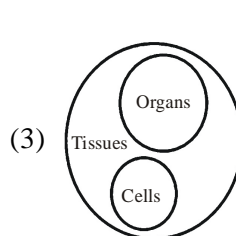
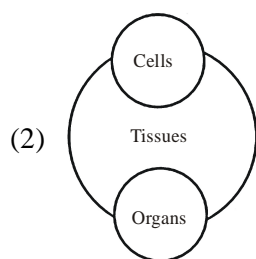
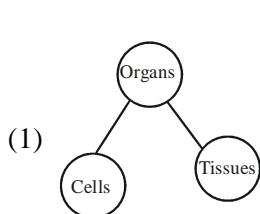
(3) Lymphocyte and Platelet

(4) Neutrophil and Monocyte

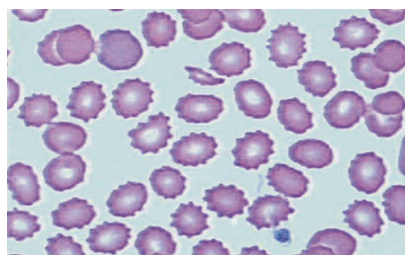
40. Which of the following practices involve in organic farming ?
- (1) Use of biofertilizers (2) Crop rotation
(3) Both (1) and (2) (4) Use of chemical pesticides
41. Use of contraceptive pills by female inhibits which step of reproductive cycle
- (1) Ovulation (2) Ejaculation
(3) Insemination (4) Fertilization
42. There are some microorganisms which decompose the waste products and remain of dead plant and animals. This helps in keeping the environment clean. Which of the following can do this ?



43. Which diagram best illustrates the relationship among the number of cells, tissues, and organs in a complex multicellular organism?

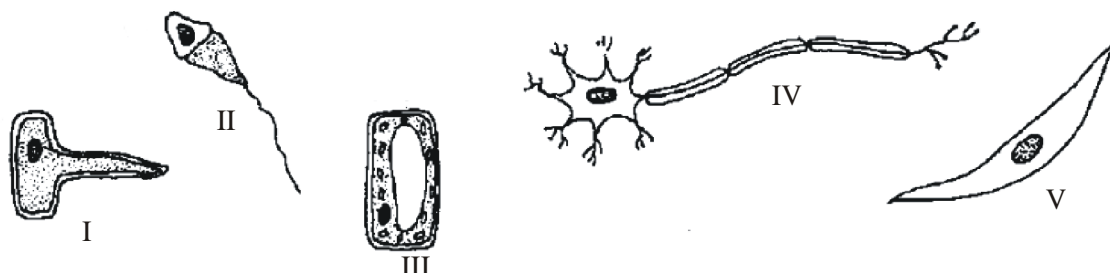


44. Study the diagram given below. In this diagram RBC's show crenation then this solution will be



- (1) Hypotonic (2) Isotonic
(3) Hypertonic (4) None of these

45. Living organisms are made up of building blocks called cells. They may differ in size, in the way they look and in what they are used for. Look at the pictures of different cells.



Which diagrams represent plant cells?

- (1) III and IV (2) II and V (3) I and III (4) I and IV

SECTION-D : MATHEMATICS

This section contains **15 Multiple Choice Questions**. Each question has four choices (1), (2), (3) and (4) out of which **ONLY ONE** is correct.

46. The unit's digit in the product of first 50 odd natural numbers is
(1) 0 (2) 5 (3) 7 (4) None of these
47. Find the quotient if we divide $x^7y - xy^7$ by $(x + y)(x^2 - xy + y^2)$
(1) $xy(x^3 + y^3)$ (2) $(x^3 + y^3)$ (3) $xy(x^3 - y^3)$ (4) $(x^3 - y^3)$
48. If $3^{x+3} \cdot 9^{2x-5} = 3^{3x+7}$, then the value of x is
(1) 3 (2) 4 (3) 6 (4) 7
49. Factorize : $p^2 + q^2 - a^2 - b^2 + 2pq + 2ab + p + q - a + b$
(1) $(p + q - a + b)(p + q + a - b + 1)$ (2) $(p - q - a + b)(p - q + a - b + 1)$
(3) $(p + q + a + b)(p + q + a - b + 1)$ (4) $(p + q - a - b)(p + q + a - b + 1)$
50. If $r^3 = 1728$ and $s = (6859)^{1/3}$, then $s^2 - r^2$ is
(1) 217 (2) 341 (3) 534 (4) 231
51. The number $107^{90} - 76^{90}$ is divisible by
(1) 61 (2) 62 (3) 64 (4) None of these
52. What is the value of $x^3 - 3b^{\frac{2}{3}}x + 9a$, if $x = \left(2a + \sqrt{4a^2 - b^2}\right)^{1/3} + \left(2a - \sqrt{4a^2 - b^2}\right)^{1/3}$?
(1) 12a (2) 13a (3) 14a (4) None of these

53. Find x : $[3 + \{2 + (1 + x^2)^2\}^2] = 144$

- (1) 1 (2) 0 (3) 5 (4) 6

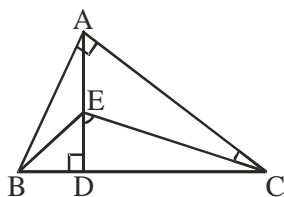
54. If a wire is bent into the shape of a square, then the area of the square is 81 sq. cm. When the

wire is bent into a semi-circular shape, the area of the semi-circle will be: (take $\pi = \frac{22}{7}$)

- (1) 22 cm² (2) 44 cm² (3) 77 cm² (4) 154 cm²

55. In $\triangle ABC$, if $\angle ABD = 64^\circ$, what is the measure of $\angle DEC - \angle ACE$?

- (1) 66°
(2) 64°
(3) 60°
(4) 54°



56. ABCD is a parallelogram in which $\angle DAO = 40^\circ$, $\angle BAO = 35^\circ$ and $\angle COD = 65^\circ$ where point O is intersection point of diagonals then $\angle ODC = \dots\dots\dots$

- (1) 80° (2) 105° (3) 25° (4) None of these

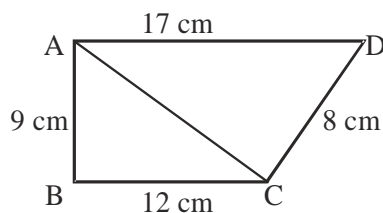
57. If two lines intersect X axis at $(-1, 0)$ and $(10, 0)$ and Y axis at $(0, 1)$ and $(0, 10)$ and intersect each other at $(4, 5)$ then find the difference between area of triangle formed by the lines along with X axis and area of triangle formed by lines along with Y axis.

- (1) $\frac{19}{2}$ sq units (2) 7 sq units (3) 14 sq units (4) None of these

58. Three pumps working 8 hours a day can empty a tank in 2 days. How many hours a day must 4 pumps work to empty the tank in 1 day ?

- (1) 13 hours (2) 12 hours (3) 10 hours (4) 9 hours

59. If the area of the quadrilateral ABCD ($\angle B = 90^\circ$) is $(a + 20\sqrt{b})$ cm² (where a is area of $\triangle ABC$), then the value of $a + b$ is



- (1) 54 (2) 63 (3) 85 (4) none of these

60. Factorize $(x + y + z)^2 - (x + y - z)^2$

(1) $2(x + y + z)(x + y - z)$

(2) $(x + y + z)(x + y - z)$

(3) $4z(x + y)$

(4) $(x + y + z)(x - y - z)$

SECTION-E : MENTAL ABILITY

This section contains **20 Multiple Choice Questions**. Each question has four choices (1), (2), (3) and (4) out of which **ONLY ONE** is correct.

61. Kunal travels 10 m from his shop and turns to his left. After that he turns to right from the crossing. After moving certain yards, he turns to left and again turns to left after moving some distance. Finally, he turns to right. If at final position he is facing North direction, then which direction he was facing while coming out of his shop ?

(1) South

(2) West

(3) East

(4) North

62. Two ladies and two men are playing a bridge game (cards) and are seated around a square table. No lady is facing towards East. Persons sitting opposite to each other are not of the same sex. One man is facing towards South. Which directions are the ladies facing ?

(1) East and West

(2) South and East

(3) North and East

(4) North and West

63. In a certain code language, QUEUE is written as Q22, and CHURCH is written as 1UR1. Which of the following would be most appropriate code for BANANA in that language ?

(1) B5A5

(2) 5N5A

(3) B55A

(4) BA5A5A

64. Kritik ranked 16th from the top and 29th from the bottom among those who has passed an examination. Six children do not participate in the examination and five failed in it. How many children are there in the class ?

(1) 40

(2) 44

(3) 50

(4) 55

65. Two equi dimensional cubes are joined face to face and are coloured red on all of their available open faces. One cube is then cut into eight equal smaller cubes and the other cube is cut into 27 smaller cubes. How many smaller cubes have two of their faces coloured ?

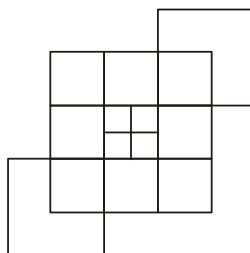
(1) 10

(2) 12

(3) 16

(4) 18

66. Find the number of squares in the given figure.



(1) 19

(2) 20

(3) 18

(4) 16

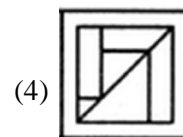
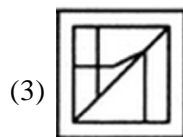
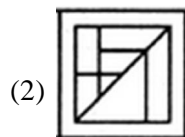
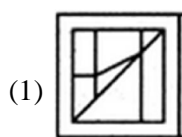
67. In a certain code KETTLE is coded as 252235, ROUGH is coded as 96378. What is the code of TALENT ?

- (1) 213562 (2) 251362 (3) 213552 (4) 251335

68. Find the alternative figure which contains figure (X) as its part.



(X)



69. A series of small letters is given which follow a certain pattern. However some letters are missing from the series. You have to find out the right set of letters from alternative that can be inserted into the blanks of the series.

_a_b_abaa_bab_abba

- (1) aaabb (2) ababb (3) babab (4) babba

70. Choose the box that is similar to the box formed from the given sheet of paper (X) :



(X)



(1)



(2)



(3)



(4)

- (1) 1 only (2) 1 and 3 only (3) 1, 3 and 4 only (4) 1, 2, 3 and 4

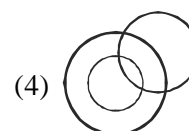
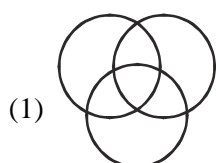
71. If a means +, b means −, c means × and d means ÷, then

16 c 12 b 6 d 2 a 17 = ?

- (1) 172 (2) 192 (3) 206 (4) None of these

72. Out of the four figures that follow, you are to indicate which figure will best represent the relationship amongst the three classes.

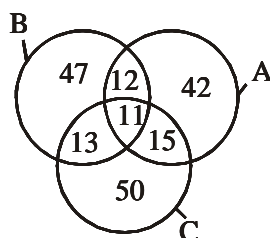
“Boys, Students, Athletes”



73. Find the missing character in the given figure.

6	7	17
8	8	20
2	3	?

- (1) 7 (2) 16 (3) 10 (4) 45
74. There are three circles A, B and C in the figure, which represents the number of students who got distinction in Physics, Chemistry and Mathematics respectively. The total number of candidates passed is 500. Observe the diagram given below and find out the total percentage of students who got distinction in all the three subjects ?

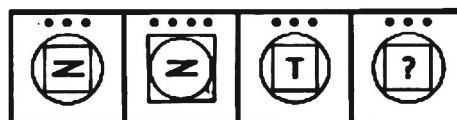


- (1) 7.2 (2) 5.2 (3) 3.2 (4) 2.2
75. Pointing to a woman, a girl said, 'She is the only daughter-in-law of the grandmother of my father's son'. How is the woman related to the girl ?
- (1) Sister (2) Cousin
(3) Mother (4) Aunt
76. Pick up from the answer figures, one which will continue the series to the problem figures.

Problem figures



Answer figures



(1) (2) (3) (4)

77. If $A + B$ means 'A is the daughter of B'

$A \times B$ means 'A is the son of B'.

$A - B$ means 'A is the wife of B'.

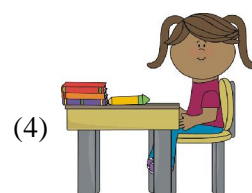
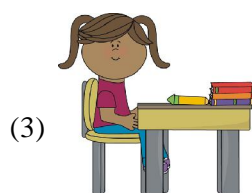
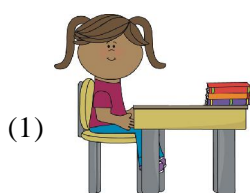
Given $T - S \times B - M$, which of the following is not true ?

- (1) B is the mother of S. (2) M is the husband of B.
(3) S is the daughter of B. (4) T is the wife of S.

78. Choose the Mirror Image of the given figure (X).



(X)



79. Find the missing number in the series.

13, 16, 22, 26, 38, 62, ?, 102

(1) 74

(2) 89

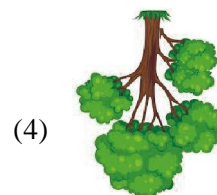
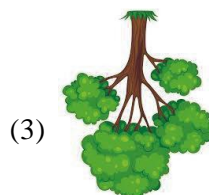
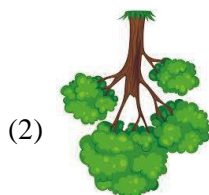
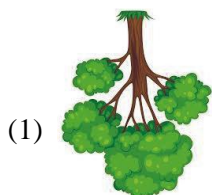
(3) 70

(4) 90

80. Choose the Water Image of the given figure (X).



(X)



SPACE FOR ROUGH WORK

ALLEN System



Orientation Session



Classroom Session



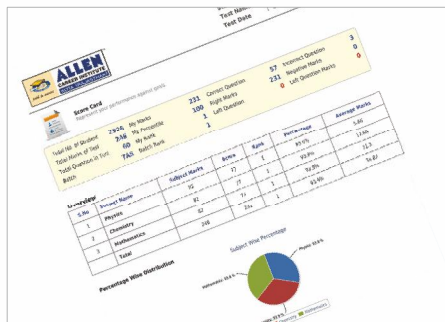
Prarthana



Open Session & Medal Distributions



Regular Test



Test Result - (CSAT)



Continuous Communication



Doubt Removal Counters



Online Practice Lab

Comprehensive Study Material	Ultimate Care	Board Work Sheets, Booklets
RACE : Regular Analysis through Continuous Exercise	Best Facilities	Expert Counselling



**संस्कार महोत्सव एवं
कल्याणोत्सव, कोटा**

ALLEN Students Bring Glory to Nation through their International Achievements-2016

International Chemistry Olympiad



48th International
Chemistry Olympiad
IChO-2016
TBILISI, GEORGIA



Silver Medal

SHARVIK MITTAL

International Physics Olympiad



47th International
Physics Olympiad
IPhO-2016
SWITZERLAND



Silver Medal

DIVYANSH GARG
(Classroom)

International Biology Olympiad



27th International
Biology Olympiad
IBO-2016
HANOI, VIETNAM



Gold Medal

LAJJA BEN PATEL
(Classroom)



Silver Medal

VIDUSHI VARSHNEY
(Classroom)

International Earth Science Olympiad



10th International
Earth Science Olympiad
(IESO) 2016
JAPAN



Silver Medal

AMARJIT VIKAS PANDE
(Classroom)

ALLEN Results : Pre-Nurture & Career Foundation (2015-16)

STAGES OF OFFICIAL OLYMPIADS MENTORED BY HBCSE

IJSO

STAGE 1

35 Selections in NSEJS
STAGE 2
16 Selections in INJSO
STAGE 3
3 Selections in OCSC
NISHANT ABHANGI
AYUSHMAN TRIPATHY
GAURANG
selected for IJSO 2016

International
Junior Science
Olympiad



IBO

STAGE 1

3 Selections in NSEB
STAGE 2
3 Selections in INBO
STAGE 3
3 Selections in OCSC
VIDUSHI VARSHNEY
Got Silver Medal In
IBO 2016

International
Biology
Olympiad

JEEVESH is the
youngest in the
country so far to
qualify stage-1 of
IBO

IChO

STAGE 1

1 Selection in NSEC
DHYEY SANKALP GANDHI
is the youngest in the
country so far to
qualify stage-1 of
IChO

International
Chemistry
Olympiad



IOAA

STAGE 2

RAYYAN SHAHID
selected in
INJAO 2016

International
Astronomy
Olympiad
Junior



IMO

STAGE 1

190 Selections
from Gujarat & 11 from
Maharashtra for RMO
through PRE RMO.
3 STUDENTS SECURED
100% MARKS
STAGE 2
14 Selections in RMO
for INMO

International
Maths
Olympiad



IESO

STAGE 1

NET – 6 Selections
Conducted by
Geological
Society of India

International
Earth Science
Olympiad



IJSO

IJSO-2015



12th International
Junior Science Olympiad
(IJSO) 2015
KOREA



Gold Medal

BHASKAR GUPTA
(Classroom)



Gold Medal

LAKSHYA SHARMA
(Classroom)



Silver Medal

VIDUSHI VARSHNEY
(Classroom)

International
Junior
Science
Olympiad

APTITUDE IN SCIENCE / MATHEMATICS

NSO

571 Selections in
NSO (Level-1)
NISHANT ABHANGI:
AIR-1 (Level-2)

NSO
National
Science
Olympiad

Conducted by
Science Olympiad
Foundation, New Delhi



STSE 2015

36 Selections for
Scholar Certificate
155 Selections for
Distinction Certificate

STSE
State Talent
Search
Examination

Conducted by
Rajasthan Board
of Secondary Education



NSTSE

232 Selections in
NSTSE (Level-1)
63 Selections in
NSTSE (Level-2)
NISHANT ABHANGI:
AIR-1 (Level-2)

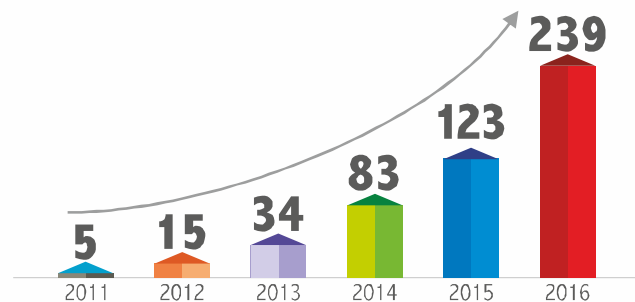
NSTSE
National
Science Talent
Search
Examination

Conducted by
Unified Council, Hyderabad



NTSE

239 Students
Selected
From **ALLEN**
NTSE 2016 (STAGE-2)



APTITUDE IN MATHEMATICS

NMTC

274 Selections in
NMTC (Prelim)
17 Selections in
NMTC (Final)

NMTC
National
Mathematics
Talent
Contest

Conducted by
Association of Mathematics
Teachers of India, Chennai



IMO (SOF)

370 Selections in
IMO (Level-1)

IMO
International
Mathematics
Olympiad

Conducted by
Science Olympiad
Foundation, New Delhi



UCO

140 Selections in
UCO (Level - 1)
59 Selections in
UCO (Level - 2)

UCO
Unified
Cyber
Olympiad

Conducted by
Unified Council, Hyderabad



SCIENTIFIC APTITUDE

BALSHREE HONOUR

14 Selections in
Balshree in Local Round
Rajasthan-7 | Gujarat-5
Madhya Pradesh-2)

Consist of
Plaque,
Citation,
₹15000 &
Literature set

Conducted by **National Bal Bhavan**

LANGUAGE PROFICIENCY

TRINITY GESE

38 Selections in
TRINITY GESE
Distinction : 21
Merit : 17

GESE
Grade
Examination
for
Spoken
English

Conducted by
Trinity College, London



WORKSHOP/CONFERENCES

NMC

9 Selections in NMC
Including Ranks
1,2,3 & 4

NMC
National
Maths
Conference

Conducted by
Association of Mathematics
Teachers of India, Chennai



APTITUDE IN INTELLIGENCE QUATIENT (IQ)

TECHNOTHLON PRELIMS 2015

20 Students (10 Teams)
Selected for Techniche

29 Selections for Silver Certificate
in Technothlon Prelims

Conducted by IIT Guwahati
Technothlon
the international school championship
...Inspiring Young minds!

TECHNICHE 2015

2 Students (1 Team)
KHUSHI TIBAREWAL
STUTI SHAH
won Junior Squad in Techniche

Conducted by IIT Guwahati
Techniche
Indian Institute of Technology Guwahati

TECHKRITI

7 Students (Including AIR-1 & AIR-3)
Selected in Techkriti

Conducted by IIT Kanpur
TSC

ALLEN Champion's Day 3rd Edition

(21 August 2016)



India's Unique
Self Nominated

CHAMPION'S HONOR AND MENTORING PROGRAM



Registrations Open

No Fee

No Examination

Just Nomination!



Helpline No. : 97998-45888, 97998-46888 | www.allenchamp.com

Corporate Office "SANKALP", CP-6, Indra Vihar, Kota (Rajasthan)-324005 Trin :+91-744-5156100 | E-Mail : info@allen.ac.in | www.allen.ac.in

Answer Key



Class- 9th (IX)

Held on : 09 October 2016

Q. No.	Ans.
1	3
2	2
3	2
4	3
5	1
6	1
7	4
8	2
9	2
10	3
11	2
12	2
13	4
14	3
15	2
16	3
17	1
18	2
19	4
20	3

Q. No.	Ans.
21	4
22	3
23	2
24	4
25	3
26	2
27	1
28	2
29	4
30	3
31	1
32	2
33	4
34	2
35	4
36	2
37	3
38	3
39	4
40	3

Q. No.	Ans.
41	1
42	3
43	4
44	3
45	3
46	2
47	3
48	4
49	1
50	1
51	1
52	2
53	2
54	3
55	2
56	1
57	1
58	2
59	2
60	3

Q. No.	Ans.
61	3
62	4
63	3
64	4
65	3
66	2
67	3
68	4
69	4
70	1
71	3
72	1
73	1
74	4
75	3
76	1
77	3
78	3
79	1
80	3