



Cover Page



ASSESSMENT OF WORK PARTICIPATION IN ALIPORE SADAR SUB-DIVISION OF SOUTH 24 PARGANAS DISTRICT, WEST BENGAL

Amit Kumar Pandit

Assistant Professor , Dept. of Geography, Jibantala Rokeya Mahavidyalaya

Abstract:

Changes in the size, composition and distribution of population are closely associated with the demographic structure of workforce. On the other hand, the workforce participation rates vary according to the stages of economic development, culture, sex-age groups. Indian economy is predominantly agricultural which contributes about one third to the total economy and employs more than half of the workforce. The agriculture is understandably not able to absorb a significant number of additional workers. However, with rise in modernization, urbanization and industrial development there is likely transformation in the occupational structure of Alipore Sadar Sub-division workforce. Industrialization, measured in terms of work force, is oriented to manufacturing sector or non-agricultural activities. Progress of electrification, transportation and communication networks in rural areas promotes agro processing industries in particular and economic activities in general.

Key words: Workforce, Development, Industrialization, Non-agricultural activities

Introduction:

The development of economic conditions of a region depends on stipulation of non-agricultural sector in terms of industries, trade and commerce. A huge involvement of population in non-agricultural sector of that region helps to rise up their living condition and purchasing power. Occupation implies trade or profession. It reveals the nature of economic progress of a country. It is related to agriculture, industry and services. Occupations depend up on the degree of economic development and sophistication of country. Occupational structure influences many aspects of population in a region. The occupational characteristics of population are reflected in the working force, dependency load, employment and unemployment. The industrial segments depend on availability of natural resources i.e. mineral resources, agro-based raw materials and human resources, good infrastructural facilities, well communication system, presence of port for import and export facilities. The phenomenal growth of industries in small scale sector has been a striking feature in economic development of the state of West Bengal and the Alipore Sadar sub-division in the district of South 24 Parganas as well.

Study Area:

The Alipore Sadar Sub-division of South 24 Parganas district lies between 22°12'41''N and 22°24'42''N latitudes and between 88°04'08''E and 88°20'45''E longitudes bounded by the river Hooghly in the West. Kolkata city in the North, eastern boundary is demarcated by part of Baruipur sub-division and southern boundary is demarcated by Diamond-Harbour sub-division. According to census 2001, Alipore sub-division had 1301955 persons (18.85%) and 14,90,342 persons (18.26 %) in census 2011 of total population of South 24 Parganas district and 427.43 sq.km.(4.29%) of the total area of the district South 24 Parganas. The sub-division has five community development blocks, namely i)Thakurpukur-Maheshtala, ii) Budge-Budge - I, iii) Budge-Budge - II, iv) Bishnupur – I and v) Bishnupur – II. At present there are 268 mouzas and 3 municipalities. Agriculture being the main source of livelihood still suffers from high salinity of water and poor irrigation facilities. Fishing is another important economic activity. Transport facilities are also very poor in this study area. There is no National Highway in the district and extension of State highways and important metalled roads is confined mostly in the northern half. Railway has connected the blocks of the southern part. Inaccessibility is still acute in most of the rural areas under the Alipore Sadar sub-division. The large and medium scale industries are mainly situated around Batanagar, Budge-Budge, Thakurpukur-Maheshtala, Bishnupur, Pujali, Amtala,

Birlapur, Kanyanagar, Bowali, Chata-Kalikapur, Kariadanga. Buta, Mayapur and Chingripota in Budge-Budge-I block, Burul and kamrabad in Budge-budge-II block, Joka-I, Austi and Chatta in Thakurpukur-Maheshtala block, kangarbaria and Bakhrahat in Bishnupur-II block have comparatively large number of small scale industries. Falta EPZ (Export Processing Zone) of this district is situated in the basin of Hooghly River at a distance of 55 kilometres from Kolkata. The export products of this EPZ include light engineering goods, jute items, leather items, handicrafts, jewellery goods and food preservation items.

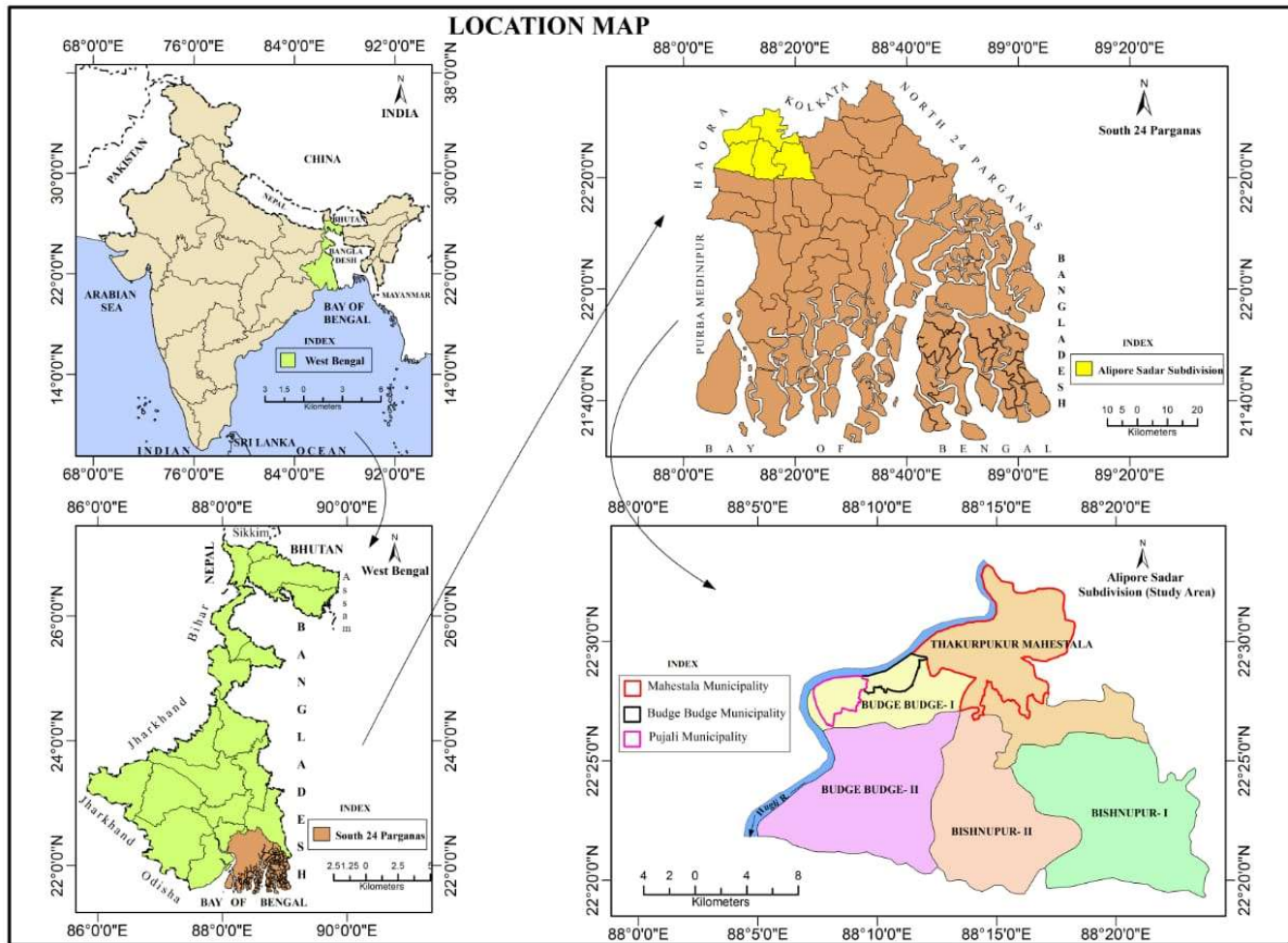


Fig.1

Objectives:

The district of South 24 Parganas is agrarian in nature and about 84% of the total population of the district is dependent of agricultural practices and 16% is dependent on non-agricultural activities. The study area, Alipore Sadar sub-division contains various non-agricultural activities. The prime objectives of the study are –

- To assess the natural and human resources available in the district for industrial exploration.
- To assess trends of population growth
- To assess the occupational pattern and work participation rate



Cover Page



DOI: <http://ijmer.in.doi./2023/12.10.82>
www.ijmer.in

Population Growth :

According to census 2001, Alipore sub-division had 13,01,955 persons (18.85%) and 14,90,342 persons (18.26 %) in census 2011 of total population of South 24 Parganas district and 427.43 sq.km.(4.29%) of the total area of the district South 24 Parganas. Industrial growth perhaps has the most auspicious impact on population. According to 2011 census , Alipore Sadar Sub-division had population of 1,49,0342 persons living in 243 inhabited villages and 39 urban centers. The Sub-division contains 18.26 percent of the total population of South 24 Parganas district. The decadal growth rate of population decreased by 12.64 percent during 2001- 2011 as against the country’s growth rate of 17.5 percent. As per 2011 census the literacy rate of the Sub-division with 72.46 percent is below the national average of 74.04 percent. Population of the rural areas accounts for 40.15 percent leaving 59.85 percent in urban centres.

Table 1:Distribution of Rural and Urban Population in Alipore Sadr sub-division of South 24-Parganas, 2001

Sub-Division / C.D.Block / M	Rural Population			Urban Population			Total Population		
	Male	Female	Total	Male	Female	Total	Male	Female	Total
Alipore Sub-Division	350310	328860	679170	328382	294403	622785	678692	623263	1301955
Thakurpukur-Maheshtala	56211	52923	109134	14306	13463	27769	70517	66386	136903
Bishnupur-I	99066	92579	191645	7614	7111	14725	106680	99690	206370
Bishnupur-II	91239	86130	177369	6792	6475	13267	98031	92605	190636
Budge-Budge-I	25301	23635	48936	27031	23978	51009	52332	47613	99945
Budge-Budge-II	78493	73593	152086	11505	9855	21360	89998	83448	173446
Budge-Budge(M)	-	-	-	41165	34366	75531	41165	34366	75531
Maheshtala(M)	-	-	-	202304	182962	385266	202304	182962	385266
Pujali(M)	-	-	-	17665	16193	33858	17665	16193	33858

Source: District Census Handbook of South 24 Parganas, 2001

Table 2: Distribution of Rural and Urban Population in Alipore Sadar Sub-division, of South 24 Parganas District 2011

Sub-Division / C.D.Block / M	Rural Population			Urban Population			Total Population		
	Male	Female	Total	Male	Female	Total	Male	Female	Total
Alipore Sub-Division	305627	292744	598371	456220	435751	891971	761847	728495	1490342
Thakurpukur-Maheshtala	45717	44463	90180	43435	42588	86023	89152	87051	176203
Bishnupur-I	104530	99855	204385	14187	13793	27980	118717	113648	232365
Bishnupur-II	71223	67756	138979	38380	37172	75552	109603	104928	214531



DOI: <http://ijmer.in.doi./2023/12.10.82>
www.ijmer.in

Budge-Budge-I	15040	14533	29573	42622	40713	83335	57662	55246	112908
Budge-Budge-II	69117	66137	135254	29453	27427	56880	98570	93564	192134
Budge-Budge(M)	-	-	-	39510	37327	76837	39510	37327	76837
Maheshtala(M)	-	-	-	229693	218624	448317	229693	218624	448317
Pujali(M)	-	-	-	18940	18107	37047	18940	18107	37047

Source: District Census Handbook of South 24 Parganas 2011.

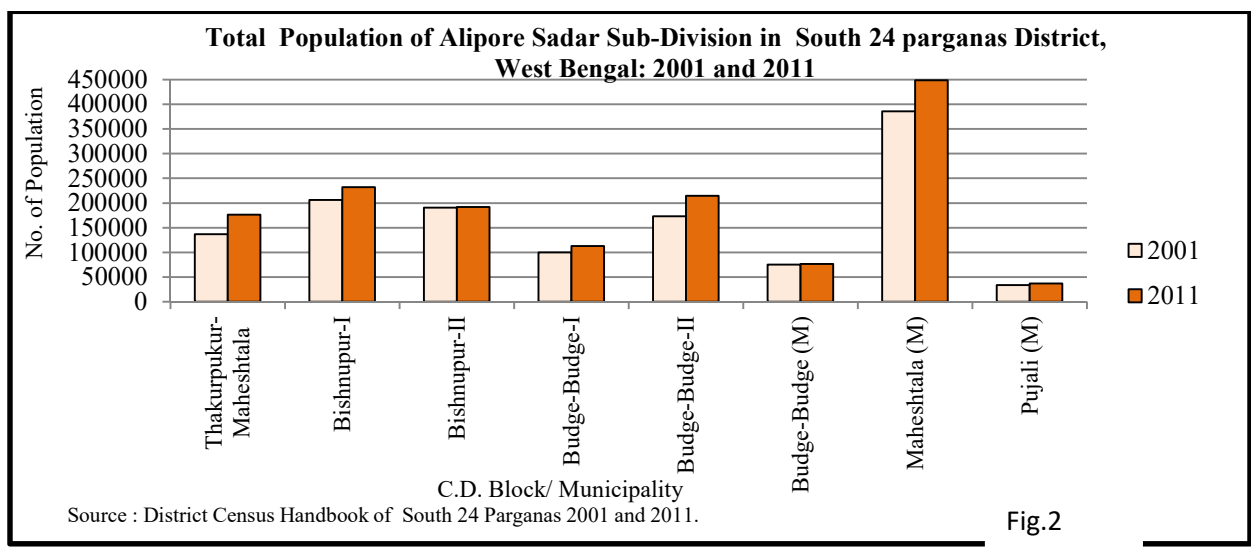
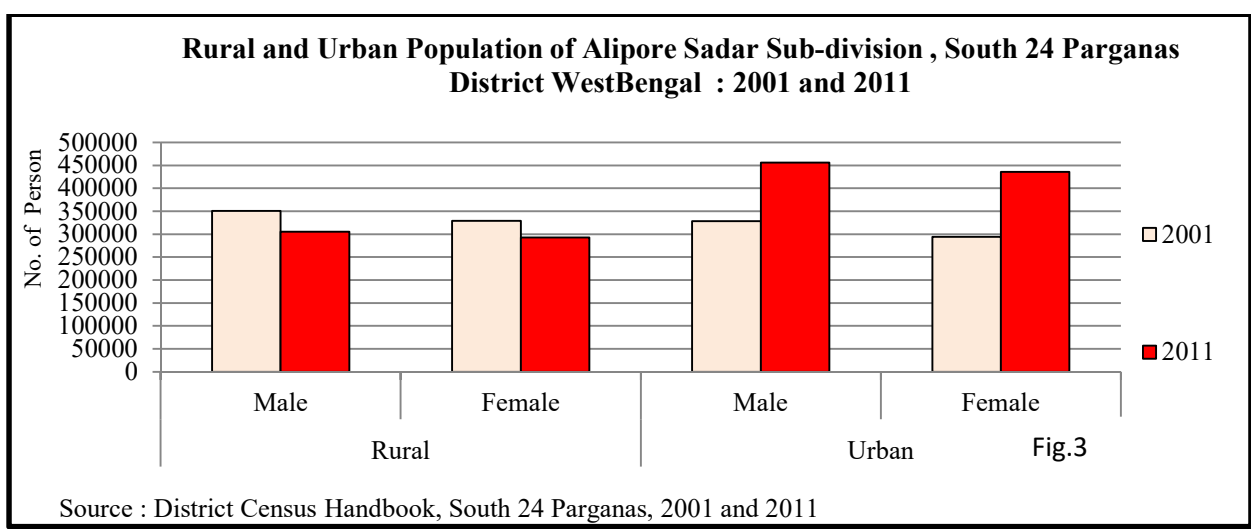


Fig.2

From the table vital facts and changing nature of demographic features of Alipore Sadar Sub-division for the past two decades are eminent. Bishnupur-I has the largest number of rural population(232365 persons) and Maheshtala municipality stands for biggest urban population(448317 persons). It is evident that the total population of Alipore Sub-division is amounts to 14, 90,342 (2011) compared to 13,01,955 in 2001.



Source : District Census Handbook, South 24 Parganas, 2001 and 2011

Fig.3



Cover Page



DOI: <http://ijmer.in.doi./2023/12.10.82>
www.ijmer.in

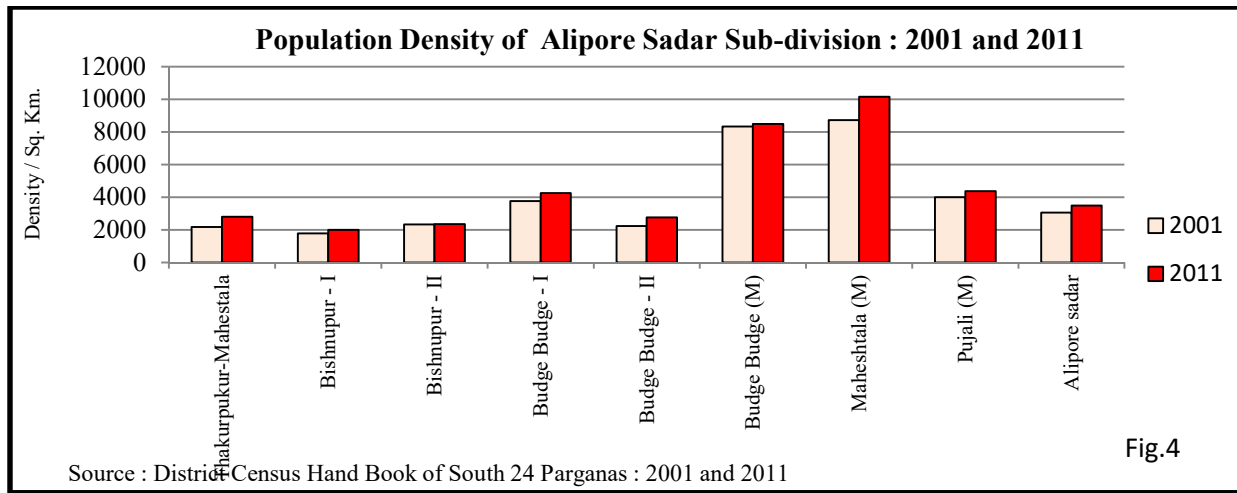
Table-1 and 2 shows the rural and urban population distribution in Alipore Sadar Sub-division of South 24 Parganas district in 2001 and 2011. Census 2001 indicates 52.17 percent rural population and rest of 47.83 percent were urban population in Alipore Sadar Sub-division. While in 2011 population of the rural areas accounts for 40.15 percent leaving 59.85 percent in urban centres. The decadal growth rate of rural male and female are decreasing and urban male and female population are increasing.

Table 3:Population Density in Alipore Sadar Sub-division, 2001 and 2011

C.D. block/ Municipality	Year	
	2001	2011
Thakurpukur-Mahestala	2170	2794
Bishnupur - I	1774	1997
Bishnupur - II	2333	2352
Budge Budge - I	3764	4253
Budge Budge - II	2224	2751
Budge Budge (M)	8337	8481
Maheshtala (M)	8720	10148
Pujali (M)	3988	4364
Alipore Sadar Total	3046	3487

Source : District Census Hand Book of South 24 Parganas : 2001 and 2011

The density of population in Alipore Sadar Sub-division rose from 2001 to 2011. 3,046 persons per square kilometre in 2001 while national average was 325 persons. 2011 witnessed 3,487 persons per square kilometre in 2011 against national average of 387 persons. It is seen that the entire subdivision has experienced a rising density during this decade.



Density of population (2011) in Maheshtala municipality was 10,148 persons per square kilometre. Population density is highest in the western portion of Alipore Sadar Sub-division. The municipal areas of Maheshtala, Budge-Budge and Pujali have more than 4,300 persons per square kilometre. The rural blocks have population density above 1,997 persons per square kilometre. Apart from the municipal areas all these blocks have developed small and medium scale industries and cottage industries at household level. Large scale industries are established in Budge-Budge in early 1900s. Transportation facilities and KMDA (Kolkata Metropolitan Development Authority) provides better opportunities for



Cover Page



DOI: <http://ijmer.in.doi./2023/12.10.82>
www.ijmer.in

livelihood which in turn has attracted huge population of sub urban and rural areas of Alipore Sadar Sub-division in south 24 Parganas district.

Table 4 : SC and ST population in Alipore Sadar Sub-division, South 24 Parganas 2011

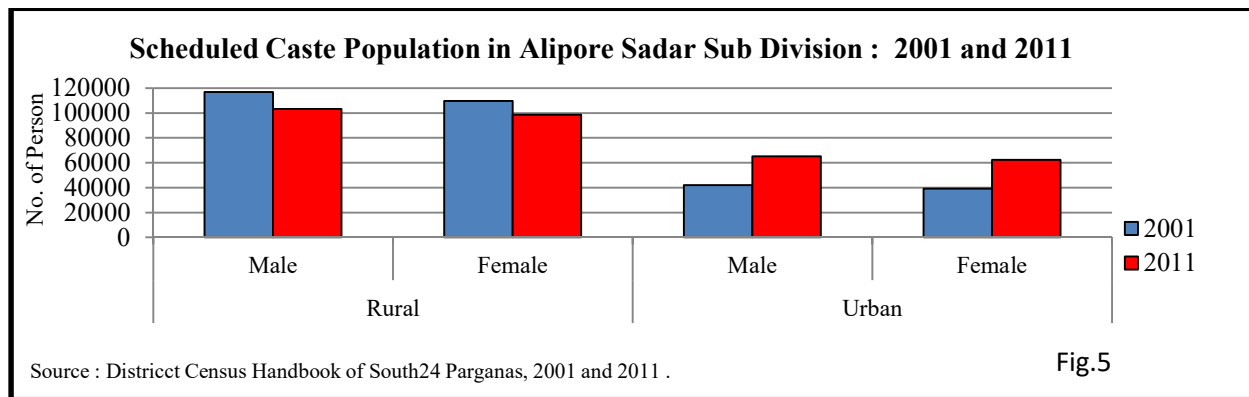
Sub-Division / C.D.Block / M	Scheduled Caste			Scheduled Tribe		
	Male	Female	Total	Male	Female	Total
Alipore Sub-Div.	168613	161187	329800	2093	2005	4098
Thakurpukur-Maheshtala	30943	29429	60372	262	243	505
Bishnupur-I	55526	52906	108432	48	52	100
Bishnupur-II	17114	16264	33378	43	44	87
Budge-Budge-I	11319	10664	21983	82	88	170
Budge-Budge-II	19582	18913	38495	119	143	262
Budge-Budge(M)	3567	3448	7015	52	51	103
Maheshtala(M)	27765	26880	54645	976	958	1934
Pujali(M)	2797	2683	5480	511	426	937

Source: District Census Hand Book of South 24 Parganas : 2011

Table 5 : Scheduled Caste Population in Alipore Sadar Sub-division, 2001 and 2011

Region	Sex	2001	2011
Rural	Male	116945	103389
	Female	109792	98747
Urban	Male	41957	65224
	Female	39196	62440
Alipore Sadar	Total	307890	329800

Source : District Census Hand Book of South 24 Parganas: 2001 and 2011



Source : District Census Handbook of South 24 Parganas, 2001 and 2011 .

Fig.5

Table-5 and 6 show Scheduled Caste and Scheduled Tribe population in Alipore Sadar Sub-division of South 24 Parganas District West Bengal, 2011 South 24 Parganas district is surrounded by Kolkata, Haora, North 24 Parganas and Bangladesh,



DOI: <http://ijmer.in.doi./2023/12.10.82>
www.ijmer.in

therefore the population characteristics are common in all areas. The inhabitants of the districts are composed of Bengali, Behari and aboriginal tribes. The decadal distribution of Scheduled Caste (SC) population has increased in urban areas but decreased in rural areas during 2001- 2011.

Table 6: Schedule Tribe population in Alipore Sadar , 2001 and 2011.

Region	Sex	2001	2011
Rural	Male	327	422
	Female	287	429
Urban	Male	1,420	1671
	Female	1,332	1576
Alipore Sadar	Total	3,366	4098

Source :District Census Hand Book of South 24 Parganas: 2001 and 2011

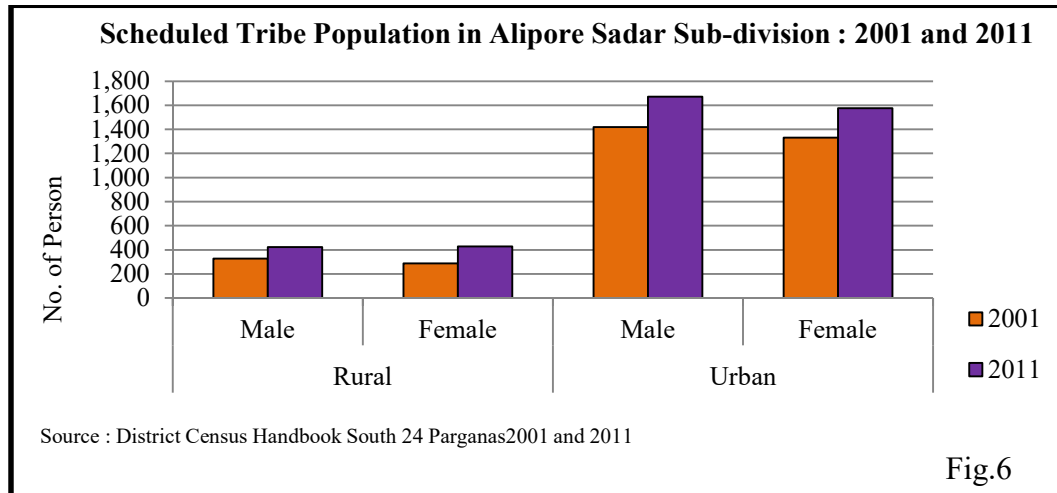


Fig.6

The decadal distribution of Scheduled Tribe (ST) population has increased rural and urban areas between 2001 to 2011.

Occupational Structure :

Occupation implies trade or profession. It reveals the nature of economic progress of a country. It is related to agriculture, industry and services. Occupations depend up on the degree of economic development and sophistication of country. Occupational structure influences many aspects of population in a region. The occupational characteristics of population are reflected in the working force, dependency load, employment and unemployment. Further, economic power of a country depends on the productive workers engaged in various economic activities.

In spite of that, occupational structure is a key component and manifestation of population composition. It gives a proper illustration of ratio of the working and non-working population in an area or a country. Occupational structure also influences the socio-economic development of an area. The spatial distribution of working and non-working population has been studied on the basis of data provided by the Census of India. This relevant data have its own utility and role in policy-decisions. The proportion of workers engaged in various occupations highlights economic and cultural surfaces of the society.



Cover Page



DOI: <http://ijmer.in.doi./2023/12.10.82>
www.ijmer.in

From times, immemorial man has been pursuing economic activities in one form or the other, because certain requirements of human life are so universal and so uniform that they must be fully met and admit no incomplete or intermittent satisfaction' (Brunhes, 1952). Initially, occupational development very much correlated with economic development. There is a close relationship between the development of an economy and the occupational structure. Economic progress is generally associated with certain distinct, necessary and predictable changes in occupational structure (Clark, 1940). Any change, therefore, in the occupational structure may be an indication of economic growth. In other words, the growth and prosperity of a region are largely dependent on the size of working population.

Table 7: Distribution of Main, Marginal and Non Workers in Alipore Sadar Sub-division, 2011

Sub-Division / C.D.Block / Municipality (M)	Main workers		Marginal workers		Non-workers		Total Population
	Number	Percentage	Number	Percentage	Number	Percentage	
Alipore Sadar Sub-Division	433656	29.10	111373	7.47	945313	63.43	1490342
Thakurpukur-Maheshtala	57987	32.91	9994	5.67	108222	61.42	176203
Bishnupur-I	62132	26.74	22108	9.51	148125	63.75	232365
Bishnupur-II	62827	29.29	17538	8.18	134166	62.54	214531
Budge-Budge-I	29476	26.11	10854	9.61	72578	64.28	112908
Budge-Budge-II	47820	24.89	21722	11.31	122592	63.81	192134
Budge-Budge(M)	22796	29.67	3269	4.25	50772	66.08	76837
Maheshtala(M)	141391	31.54	21644	4.83	285282	63.63	448317
Pujali(M)	9227	24.91	4244	11.46	23576	63.64	37047

Source : District Census Hand Book of South 24 Parganas , 2011

Table 7, shows workers and non-workers in Alipore Sadar Sub-division,2011

The workers are categorised into two main groups. The average main worker and marginal worker of Alipore Sadar sub-division were 29.10 percent and 7.47 percent. According to Census 2011 main worker was below 33 percent in selected blocks and municipalities of Alipore Sadar Sub-division. Marginal worker was below 11.50 percent and average non worker was 63.43 percent in Alipore Sadar Sub- division.

Work participation rate :

The temporal analysis of total workers of India explains that the work participation rate was 39.80 percent similar trend is observed in Alipore Sadar Sub-division also. The total, rural and urban work participation rate in Alipore Sadar Sub-division was lower than that of India in the same period. In Alipore Sadar Sub-division, only 36.57 percent of total worker was economically active in 2011. In comparison, the corresponding figure for Alipore Sadar Sub-division has decreased by 3.23 percent in 2011.

The temporal analysis of total workers of West Bengal explains that the work participation rate was 38.07 percent, similar trend is observed in Alipore Sadar Sub-division also. The total, rural and urban work participation rate for Alipore Sadar Sub-division was lower than that of the same period. In Alipore Sadar Sub-division, only 36.57 percent of total worker was economically active in 2011. In comparison, the corresponding figure for Alipore has decreased by 1.47 percent in 2011.



Cover Page



DOI: <http://ijmer.in.doi/2023/12.10.82>
www.ijmer.in

The temporal analysis of total workers of South 24 Parganas explains that the work participation rate was 36.32 percent. Similar trend is observed in Alipore Sadar Sub-division also. The total, rural and urban work participation rate for Alipore Sadar Sub-division was higher than that of South 24 parganas in the same period. In Alipore Sadar Sub-division, only 36.57 percent of total worker was economically active in 2011. In comparison, the corresponding figure for Alipore has increased by 0.25 percent in 2011.

Table 8 : Distribution of workers in Alipore Sadar Sub-division, 2001

Sub-Division /C.D.Block / Municipality (M)	Total Workers (TW)		Class of Total Workers							
	Number	Percentage	Cultivators		Agricultural Labourers		Household Ind. Workers		Other Workers	
			Number	Percentage	Number	Percentage	Number	Percentage	Number	Percentage
Alipore Sadar Sub-Division	416620	32	21786	5.23	52063	12.5	42917	10.30	299854	71.97
Thakurpukur-Maheshtala	46476	33.95	2601	5.60	5031	10.82	4181	9.00	34663	74.58
Bishnupur-I	67833	32.87	10456	15.41	17014	25.08	8982	13.24	31381	46.26
Bishnupur-II	62365	32.71	4123	6.61	10130	16.24	10918	17.51	37194	59.64
Budge-Budge-I	30096	30.11	667	2.22	4814	16.00	1464	4.86	23151	76.92
Budge-Budge-II	55289	31.88	3525	6.38	14123	25.54	4922	8.90	32719	59.18
Budge-Budge(M)	23734	31.42	28	0.12	124	0.52	348	1.47	23234	97.89
Maheshtala(M)	119654	31.06	358	0.30	417	0.35	11619	9.71	107260	89.64
Pujali(M)	11173	33.00	28	0.25	410	3.67	483	4.32	10252	91.76



Cover Page



DOI: <http://ijmer.in.doi/2023/12.10.82>
www.ijmer.in

Table 9 : Distribution of workers in Alipore Sadar Sub-division, 2011

Sub-Division / C.D.Block / Municipality (M)	Total Workers (TW)		Class of Total Workers							
	Number	Perce ntage	Cultivators		Agricultural Labourers		Household Ind. Workers		Other Workers	
			Number	Perce ntage	Number	Perce ntage	Number	Perce ntage	Number	Perce ntage
Alipore Sadar Sub-Division	545029	36.57	21895	4.02	50766	9.31	65727	12.06	406641	74.61
Thakurpukur- Maheshtala	67981	38.58	2320	3.41	2894	4.26	4080	6.00	58687	86.33
Bishnupur-I	84240	36.25	8342	9.90	15687	18.62	13718	16.28	46493	55.19
Bishnupur-II	80365	37.46	4787	5.96	10297	12.81	13705	17.05	51576	64.18
Budge-Budge-I	40330	35.72	1140	2.83	4762	11.81	4772	11.83	29656	73.53
Budge-Budge-II	69542	36.19	3896	5.60	16068	23.11	9136	13.14	40442	58.15
Budge- Budge(M)	26065	33.92	137	0.53	146	0.56	618	2.37	25164	96.54
Maheshtala(M)	163035	36.37	1104	0.68	659	0.40	18857	11.57	142415	87.35
Pujali(M)	13471	36.36	169	1.25	253	1.88	841	6.24	12208	90.62

Source : District Census Hand Book of South 24 Parganas , 2011

Different categories of workers in Alipore Sadar Sub-Division:

The analysis of total workers and percentage of different categories of workers in Alipore Sadar Sub-division explain that cultivators and agricultural labourers are decreasing and percentage of household industrial workers and other workers are increasing in 2001 and 2011 period in Alipore Sadar Sub-division. The people are mainly engaged in agriculture and agricultural labour. Cultivators (5.23%) and agricultural labourers (12.5%) both constitute 17.73 percent of total workforce in 2001 which is reduced to 13.33 percent in 2011. The decrease in number of cultivators is larger than increase in agricultural labourers. The household industry sector accounts for very small percentage (around 12.06%) both in 2001 and 2011 in Alipore Sadar Sub-division. The other categories of economic activities gave employment to 71.97 percent of workers in 2001 and 74.61 percent of workers by 2011.

Conclusion:

The above discussion clearly brings out the fact that in Alipore Sadar Sub-division women in general have lower participation in work as compared to males. This participation is conditioned by socio economic characteristics and geographical space. People's participation is an important factor for the successful implementation of any development



Cover Page



DOI: <http://ijmer.in.doi./2023/12.10.82>
www.ijmer.in

activities. It is important to note that the proportion of workers in agricultural sector in Alipore Sadar Sub-division has shown a decline over the last few decades. Consequently, the participation rate in secondary and tertiary sector has registered an increase. This indicates a shift of dependence of workers from farm based occupations to non-farm based ones, highlighting a sectoral shift in the economy of the country specially in decision making, implementation, monitoring, evaluation and sharing of the benefits of the development programmes. Urbanised areas like Budge Budge, Maheshtala and Pujali have a very large proportion of workers engaged in other services in consequence of large scale urbanisation and industrialization.

Bibliography:

- Bhagat, R.B and Das, K.C.(2008) Levels, Trends and Structure of Workforce in India: Census Based Study 1981-2001, International Institute for Population Sciences Govandi Station Road, Deonar Mumbai.
- District Census Handbook: South 24 Parganas, Vol- I & Vol-II (2001). Census of India.
- District Census Handbook: South 24 Parganas, (2011). Census of India
- District Human Development Report: South 24 Parganas,(2009) Development and Planning Department Govt. of West Bengal.
- District Statistical Handbook : South 24 Parganas (1994 to 2009), Bureau of Applied Economic and Statistics, Govt. of West Bengal, Kolkata.
- District Statistical Handbook : South 24 Parganas (2010 to 2011), Bureau of Applied Economic and Statistics, Govt. of West Bengal, Kolkata.
- Ganguly, D.(1979), Regional Economy of West Bengal : A Study of Urbanization, Growth Potential and Optimisation of Industrial location of West Bengal, Orient Longman Pvt.Ltd. Kolkata.
- India- People and economy, NCERT Books, www.ncert.nic.in/ncerts/l/legy201.pdf
- Thomas J.J. Labour and industrialisation in kerala, *Indian Journal of Labour Economics*, Vol. 46, No.4, pp. 575-92., June-December 2003