



Cover Page



DOI: <http://ijmer.in.doi./2022/11.05.07>

## THE MALLAMPALLY GRANITIC ROCKS MULUGU DISTRICT, TELANAGANA SOUTHERN INDIA

N. Rajeshwar, I. Panduranga Reddy, N. Ningam and R. Janaiah

Department of Geology

University College of Science, Osmania University

Hyderabad, Telangana, India

**Abstract:** The granitic rocks spread in Mallampally, Mulugu Districts of Telangana have attracted inadequate attention of the researchers made up of a variety of granitic rocks remains unclassified and a meaningful geochemical and petrogenetic study is yet to be taken up even after more than a hundred years of geological investigations.

The study area is covering the toposheet no. of 56 N/16 part of the Mallampally (18°04'15" N-79°47'20" E), area of the Mulugu District, wherein the lithological variants range from quartzmonzonite, granite, and syenites. This paper attempts at highlighting the geochemistry and petrogenesis of around Mallampally area, Mulugu district.

The granites are medium to coarse grained, inequigranular and porphyritic in texture. They are composed of K-feldspar (46-54% by Vol %) represented by orthoclase and microcline perthite, plagioclase (8-24%) and quartz (20- 36%). Mafic minerals include amphibole (1-9%) and biotite (1-6%) and accessories are magnetite, sphene, and apatite. Presence of discrete plagioclase grains in substantial proportions indicates subsolvus conditions of crystallisation of parental magma.

The rocks have high SiO<sub>2</sub> (64.54 – 76.70% by wt.), high K<sub>2</sub>O (5.51-6.40%) and low Na<sub>2</sub>O (0.13- 4.27%), CaO (0.04- 2.91%), with a calc-alkaline signature and low iron enrichment trend attesting to a typical of granites.

The chondrite normalised REE ratios of the syenogranites display LREE-enriched and HREE-depleted patterns and have a high LREE/HREE ratio that hints at the fractional crystallisation process as a major process. Further, the negative Eu anomaly indicates fractionation of feldspar. The rocks are originated from a LILE-enriched lithospheric mantle.

**Keywords:** Granite, K-feldspar, Geochemistry, REE, Mallampally Mulugu District, Telangana.

### Introduction

The granitic rocks spread over Mulugu Districts of Telangana have attracted inadequate attention of the researchers that is disproportionate to their predominance as the Precambrian crustal rocks. The association of granites and syenites across the Dharwar craton is not unusual and well entrenched in the literature and their coexistence in the field. An important process in the formation of granitic crust was the partial melting of basaltic lower crust/ subducting slab, which led to the formation of tonalite- trondhjemite-granodiorite (TTG) series of rocks in the late Archean period. Partial melting process of a variety of source regions that include subduction slab, mantle wedge and crust leading to the emplacement of a variety of granitoids in southern India since the Archaean cratons are dominantly constituted by TTG gneisses, greenstone belts, granulites and subordinate calc-alkaline granitoids, a study on these rocks would therefore portray geochemical evolution of magmatic rocks.

Magmatic rocks in the late Archaean are of particular importance because during this period when crustal reworking processes assumed increasingly dominant role leading to the generation of calc-alkaline granitoids, Extensive research has been undertaken to last four to five decades during understand the origin and evolution of early formed continental crust and the calc alkaline granitoids, that bear distinctive geochemical characteristic.

The genesis of granitoids took place through interaction of diverse sources including upper mantle, lower and upper crust, and subsequently derived melts (Condie et al., 1985; Allen et al, 1986; Newton, 1990; Stern and Hanson, 1991; Evans and Hanson, 1992). Since the granites mark the stabilization of the craton, and a comprehensive study of these rocks provides an insight in understanding the continental growth through the geological past.

Granitic rocks are widely spread in the Telangana that is a part of the western side of the intracratonic Mesoproterozoic Cuddapah basin. On the contrary, granites corresponding to the acidic magmatism together with the syenites of different levels of silica saturation (representing alkaline magmatism) and gabbros (representing the basic magmatism) have been studied in a satisfactory manner. The entire south eastern margin of India is believed to have experienced extensive rift-related magmatism around 1.9 Ga (French et al. 2008) and an important granite forming event occurred in Middle-Proterozoic (~1000-1400 Ma) in the Indian shield (Divakara Rao et.al. 1999). Preceding the Paleo-Mesoproterozoic granite magmatism, a major crustal accretion event, possibly related to mantle plume activity resulted in intrusion of composite magmas into mid-crustal levels, initiating anatexis of the surrounding crust in Dharwar craton (Jayananda, 1995, 2000).



In this paper, we present the petrographic and geochemical data of the granites of the Mallampally (18°04'15"N-79°47'20"E), in the Mulugu district, that is crucial in throwing light on the genesis of these rocks of the granitic suite of the rocks of the Mulugu in general.

### Field Setup

The present study area at Mallampally (Fig.1), Mulugu district of Telangana state being reported in detail for the first time is a part of the granitic complex of Precambrian age. The granitic terrain of the Mallampally area is composed of monzogranite, granite, and syenites.

The granites of Mallampally are massive and outcrops assume the shape of tors, knolls, inselbergs and conical mounds (Fig. 2 a – b); they are large bodies that extend for a few kilometers and frequently exhibit sharp contacts with monzogranite (Fig 2.c).

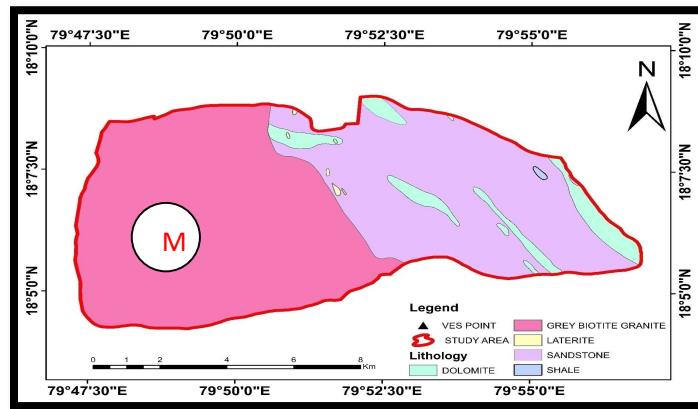


Figure 1. Geological map of Mallampally area showing distribution of different rock types.

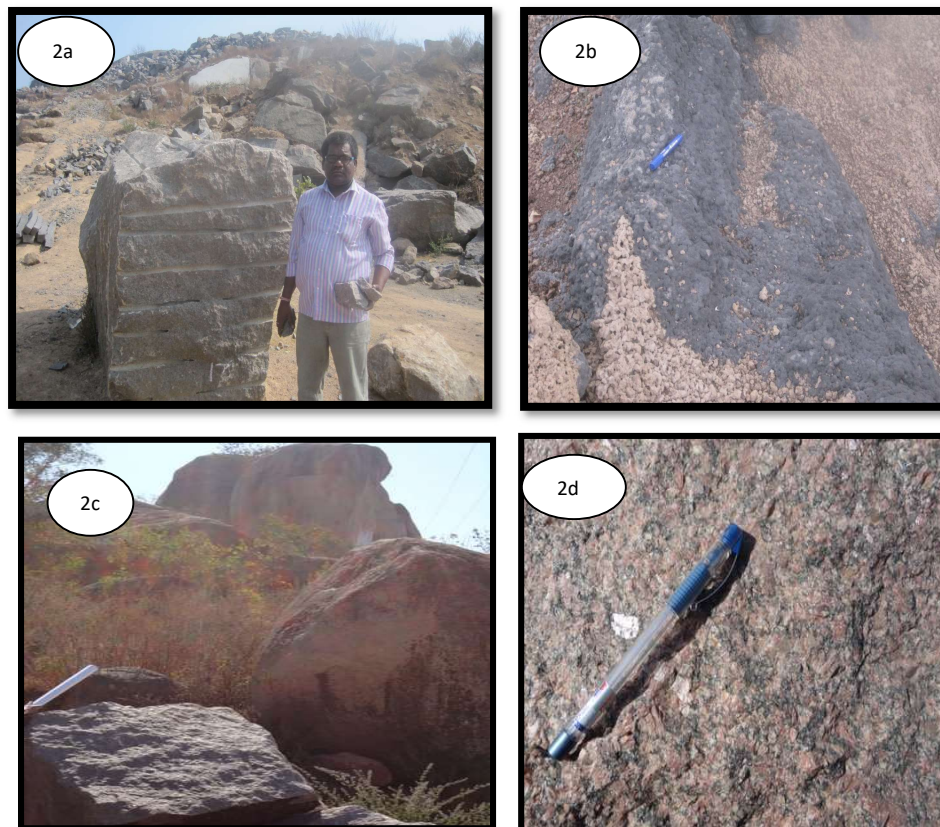


Figure 2. Field photographs depicting the nature and characteristic features of granites of Mallampally area,



They are often seen juxtaposed to sheets of granodiorites. Though the granites do not carry any evidence of deformation, at few places the amphibolites enclaves has been deformed to pygmatic folding (Fig.2d). The other prominent exposures of granites are noticed in the nearby areas neredpally, mg pally, rajpally, and katrapally. The granites are intruded by pegmatites that belong to two or three generations that run in different directions assuming different shape indicating nature of fluids.

### Petrography

The Mallampally granite is a leucocratic, with CI <30 and exhibits holocrystalline texture and is devoid of any gneissic fabric. The rock is medium to coarse grained and with equigranular and hypidiomorphic textures, dominated by K- feldspar (microcline perthite) and quartz followed by mafic minerals like amphibole and Biotite (Table 1). Microcline perthite (Fig. 3a) constitutes bulk proportion of the rock. Orthoclase perthite is found displaying vein and string perthitic patterns. (Fig.3.b) Plagioclase is present in substantial proportions and the discrete plagioclase is indicative of subsolvus crystallization of the rock.

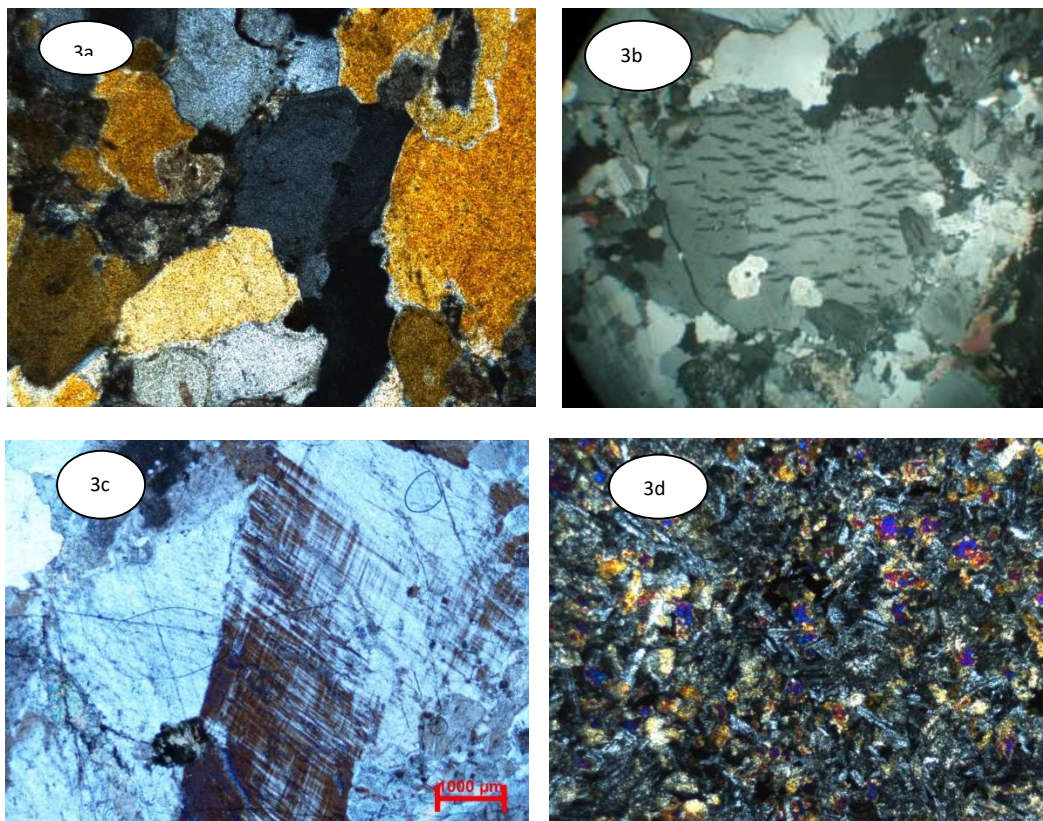


Fig.3. Photomicrographs of granites of Mallampally showing (a) anhedral quartz (b) orthoclase perthite with string pattern, (c) cross hatched twinning microcline perthite (d) hornblende in association with biotite

Anhedral quartz is seen as an independent phase in association with plagioclase and microcline and occasionally exhibits interstitial habit. Myrmekites and anti-perthites are noted at plagioclase-quartz/K-feldspar contact. The amphibole is noticed as large subhedral grains with two prominent sets of cleavages and occasionally alters to biotite. Primary biotite is seen as a discrete phase (Fig.3c) in the form of as flakes within the matrix and also as fine aggregates within the interstices. Thus the presence of both amphibole and biotite demonstrates the role of volatiles in the evolution of the granites of Mallampally. Apatite, zircon (Fig.3d), fluorite, calcite, magnetite constitutes the accessory minerals. In the QAP diagram (Streckeisen, 1967) the rocks fall in the fields of alkalifeldspar granite, syenogranite and quartz syenites feldspar (fig. 4a)

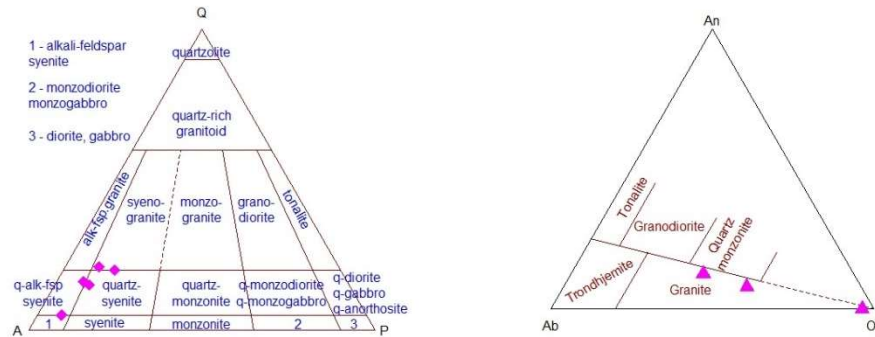


Fig. 4. (a) Plots of granites of the Mallampally area in the QAP 'modal' diagram (Streckeisen, 1967) and (b) 'normative' feldspar triangle (O'Connor, 1965)

Table.1. Modal compositions (Vol %) of granites and of Mallampally, Telangana.

S. No.	M/1	M/5	M/7	M/11	M/13
Quartz	23	22	25	22	30
K-Feldspar	58	48	44	46	52
Plagioclase	9	18	20	14	11
Hornblende	5	—	—	6	2
Biotite	1	8	7.5	4	2.5
Sphene	2.6	—	3	4	0.5
Magnetite	0.5	2.2	—	4	1.5
Apatite	0.4	0.8	0.5	—	0.5

### Geochemistry

The whole rock composition of the Mallampally granites was determined at the National Geophysical Research Institute, Hyderabad with the X-ray fluorescence spectrometer (XRF) (Philips Magi PRO model PW 2440 wavelength dispersive X-ray fluorescence spectrometer coupled with automatic sample changer PW 2540) and ICP-MS (Model: Perkin Elmer Scitex ELAN DRC II). The trace and RE elements were determined using 0.1% solution prepared by HF-HCl-HNO<sub>3</sub> acid decomposing procedures. The major element data of granites of Mallampally is provided in Table 2, and the trace and REE compositions are in Table 4. In the CIPW normative Ab-An- Or triangle diagram (fig 4b) and in TAS (fig 5a) the rocks of Mallampally fall in granite field.

In general, the granites of Mallampally have SiO<sub>2</sub> exceeding 60% with narrow range of variation from 68.02 to 76 wt%. The Al<sub>2</sub>O<sub>3</sub> also depicts a limited variation that ranges from 11.48 to 13.87% .and are metaluminous (Fig. 5b.) The granites exhibit K<sub>2</sub>O < Na<sub>2</sub>O and the high contents of Al<sub>2</sub>O<sub>3</sub> and K<sub>2</sub>O is attributed to K feldspar. The FeO<sub>T</sub> and MgO contents are low. The CaO content ranges from 0.87- to 2.80% is attributed to amphibole and plagioclase feldspar. The low abundances of compatible elements like Ni (6-30 ppm), Cr (197-267 ppm) and Co (2-7 ppm) suggest thatMallampallythe rocks represent evolved compositions. In the AFM diagram (Fig.6.a ) form a smooth and distinct trend that is characteristic of any subalkaline series, where in the magma does not show preferential enrichment in either MgO or FeO and with increasing differentiation, there is a drop in the concentration of MgO and FeO and the trend line moves towards alkali rich corner.The Differentiation index (DI) normative Or+Ab+Qtz+Lc+Ne) (Thornton and Tuttle, 1960) ranges from 98.04 to 99.67, supports limited differentiation by fractional crystallization. The granites have a rather high Ba and Sr and low Cr, Co, Ni, (6b) similar to granites differentiated from a mafic rich magma originating from a mantle source.



Cover Page



DOI: http://ijmer.in.doi./2022/11.05.07

Few of the granites are fall within the plate granite field (WPG). The tectonic discrimination diagrams exhibiting that these granites are intruded into the craton. Most of samples fall in the field of VAG and the reason may be attributed to the values of Y, Nb and Rb which are diluted by gathering of plagioclase feldspar (Pearce et al., 1984) (Fig. 7.4)

The granites of Mallampally have high LILE and HFSE and display a LREE enriched and HREE depleted patterns in the chondrite normalized plots (fig.7a) with Eu anomalies and thereby hinting at the role of plagioclase fractionation in the genesis of granites. In the spidergram (fig.7b), the spikes for Nd and Gd and troughs for Nb, Ta, Sr and Ti suggest “arc setting” for the Malampally area, the conspicuous Gd anomaly is apparently due to presence of ‘monazite’ in these rocks.

Table 2. Major element composition, ratios and CIPW norms of the granites of the Mallampally, Mulugu district, Telangana.

S. No.	M/1	M/5	M/7
SiO <sub>2</sub>	64.54	72.17	76.70
Al <sub>2</sub> O <sub>3</sub>	16.40	15.63	14.12
Fe <sub>2</sub> O <sub>3</sub>	3.63	0.99	1.55
MnO	0.04	0.01	0.03
MgO	1.33	0.25	0.21
CaO	2.91	1.07	0.04
Na <sub>2</sub> O	4.27	2.78	0.13
K <sub>2</sub> O	5.41	6.40	5.23
TiO <sub>2</sub>	0.60	0.05	0.57
P <sub>2</sub> O <sub>5</sub>	0.40	0.01	0.05
LOI	0.86	0.52	0.57

Table 3. CIPW Norm calculation for granites of Mallampally, Mulugu Area, Telangana.

S. No.	M/1	M/5	M/7	M/11	M/13
SiO <sub>2</sub>	70	69.91	69.07	68.29	69.33
TiO <sub>2</sub>	0.09	0.12	0.62	0.25	0.2
Al <sub>2</sub> O <sub>3</sub>	12.64	12.93	11.48	12.97	12.59
FeO	4.3	4.48	5.26	4.66	4.73
Fe <sub>2</sub> O <sub>3</sub>	0.48	0.5	0.59	0.52	0.53
MnO	0.01	0.03	0.05	0.02	0.03
MgO	0.11	0.18	0.55	0.28	0.2
CaO	0.87	1.06	2.8	1.55	1.39
Na <sub>2</sub> O	3.87	4.22	3.5	3.75	3.95
K <sub>2</sub> O	5.66	4.55	5.28	5.72	5
P <sub>2</sub> O <sub>5</sub>	0.03	0.05	0.47	0.08	0.06
Total	98.06	98.03	99.67	98.09	98.01
Na <sub>2</sub> O+K <sub>2</sub> O	9.52	8.77	8.78	9.46	8.95
K <sub>2</sub> O/ Na <sub>2</sub> O	1.46	1.08	1.51	1.53	1.21
Fe <sub>2</sub> O <sub>3</sub> +FeO	4.78	4.98	5.85	5.18	5.26
FeO/Fe <sub>2</sub> O <sub>3</sub>	8.96	8.96	8.92	8.96	8.92



Cover Page



DOI: <http://ijmer.in.doi./2022/11.05.07>

Table 4 Trace and REE. of Mallampally, Mulugu Area, Telangana.

S. No.	M/1	M/5	M/7
Sc	7.349	0.366	3.007
V	48.503	10.319	53.800
Cr	12.719	16.622	22.251
Co	5.259	2.695	4.091
Ni	2.111	2.266	0.972
Cu	4.038	4.245	10.525
Zn	53.292	55.746	77.736
Ga	20.599	12.581	8.177
Rb	134.196	106.119	67.190
Sr	667.648	379.512	56.961
Y	22.864	0.871	9.773
Zr	675.724	35.584	168.239
Nb	12.800	0.363	5.194
Cs	0.393	0.423	0.406
Ba	4001.146	2127.476	587.252
La	141.006	21.685	194.879
Ce	271.371	24.058	371.687
Pr	26.908	1.998	36.825
Nd	88.685	5.330	122.077
Sm	12.598	0.547	17.210
Eu	3.812	1.213	3.144
Gd	8.503	0.373	10.861
Tb	0.972	0.044	1.005
Dy	4.798	0.200	3.555
Ho	0.816	0.044	0.441
Er	1.954	0.124	0.854
Tm	0.298	0.034	0.136
Yb	1.608	0.173	0.667
Lu	0.253	0.031	0.100
Hf	15.936	1.168	4.379
Ta	0.586	0.097	0.383
Pb	33.993	24.805	25.501
Th	14.617	0.831	7.453
U	1.964	0.302	1.160

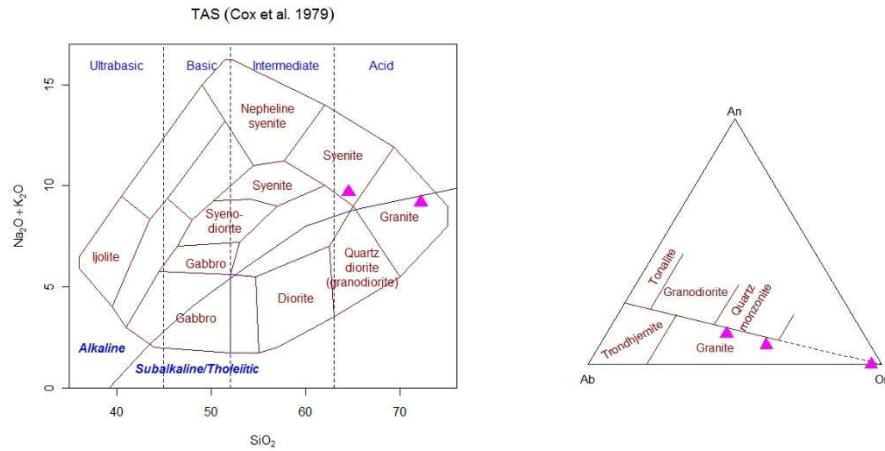
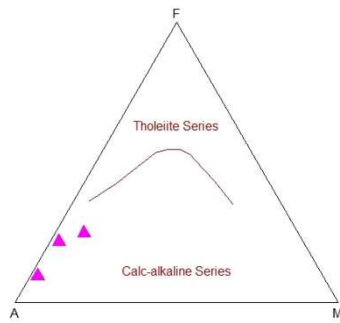


Fig. 5. Plots of granite samples of Mallampally in (a) TAS diagram (Cox et al, 1979); (b) Ab-An- Or diagram (Villasce et al., (1996)

AFM plot (Irvine and Baragar 1971)



R1-R2 (Batchelor + Bowden 1985)

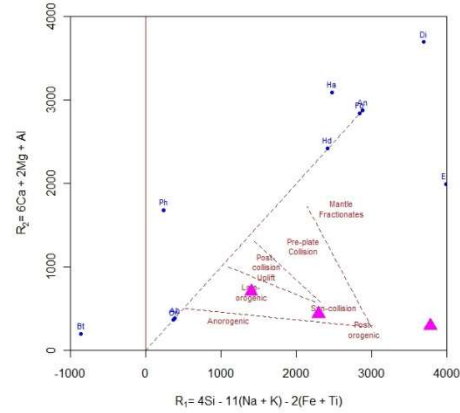
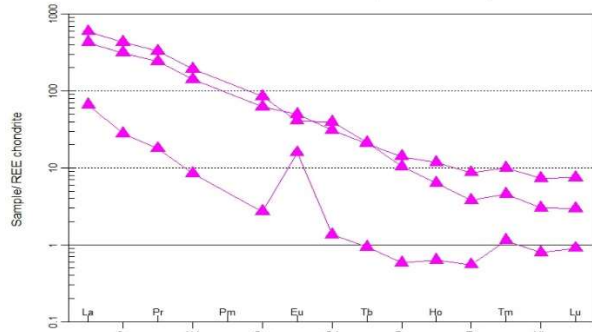


Fig. 6. Plots of granite samples of Mallampally in (a) AFM diagram (Cox et al, 1979); (b) R1- R2 diagram (pearce et al., (1984)

Spider plot – REE chondrite (Nakamura 1974)



Spider plot – Chondrites (Sun et al. 1980)

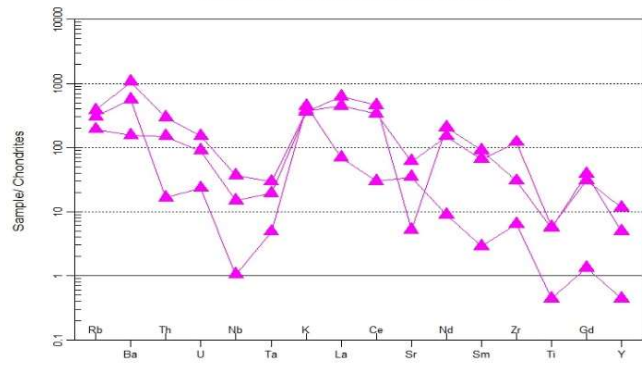


Fig.7. (a) Chondrite normalized REE plots and (b) Multielement spidergram (Mc Donough and Sun, 1985)for the granites of Mallampally , Telangana.



Cover Page



DOI: <http://ijmer.in.doi./2022/11.05.07>

## Conclusions

The Precambrian Mallampally granitic rocks are formed at mesozonal levels in the crust. The parental liquids are of mixed character and represent from “arc granites” through “withinplate granites” and “syn collisional granites” REE 0 X chondrite concentrations in a sample indicates that garnet is removed from the source liquid involving fractionation of feldspars with attend and accumulation of volatiles that lead to subsolus crystallization of feldspar.

## Acknowledgements

The authors thank the Director, CSIR-National Geophysical Research Institute (NGRI) Hyderabad and EVSSK Babu Principal scientist, NGRI for providing the facilities for carrying out analytical work. Thanks, UGC (New- Delhi) for awarding JRF under Rajiv Gandhi National Fellowship Scheme and Head, Dept of Geology, Osmania University for encouragement and lab facilitation.

## References

- Allen, P., Condie, K.C., and Narayana, B.L., 1985. Geochemistry of the prograde and retrograde charnockite-gneiss reactions in South India. *Geochim. Cosmochim. Acta*, 49, pp323–339.
- Condie, K.C., Bowling, G.P. and Allen, P., 1985. Origin of granites in an archean high – grade terrain southern India. *Contrib. mineral. Petrol.*, vol.92-103.
- Dharma Rao, C.V., Santosh, M. and Yuan-Bao,WU. (2011) Mesoproterozoic ophiolitic mélange from the SE periphery of the Indian plate: U–Pb zircon ages and tectonic implications.*Gondwana Res.*, v.19, pp.384-401.
- Miyashiro, A. (1978) Nature of alkalic rock series. *Contr.Mineral. Petrol.*66, pp91-104.
- Divakar Rao, V., Subba Rao, M.V., Ramarao, P. and Panthulu, G.V.C.,1994. Geochemistry age and origin of Perur granite, Chittoor districts, Andhra Pradesh. *Jour. Geol.Soc. India*. Vol.44, pp. 637-643.
- Jayananda, M. and Mahabaleswar, B., 1991. The generation and emplacement of the Closepet granite during late Archean granulite metamorphism in southeastern Karnataka. *Jour.Geol.Soc.India*.vol.38. pp.418-426.
- Jayananda, M., Moyen, J.-F., Martin, H., Peucat, I.-J., Auvray, B. And Mahabaleswar, B. (2000) Late Archean (2550-2520 Ma) juvenile magmatism in the Eastern Dharwar craton, southern India: constraints from geochronology, Nd-Sr isotopes and whole rock geochemistry. *Precambrian Res.*, v.99, pp.225-254
- Middlemost, E. A. K. (1985). Naming materials in the magma/igneous rock system. *Earth Sci. Rev.* 37, 215–224.
- Newton, R.C., 1990. Fluids and melting in the Archean depp crust of south india. In: Ashworth, J.R., Brown, M(eds), High-temperature and crustal Anataxis. Unwin Hyman, London, pp. 149-179.
- French, J.E., Heaman, L.M., Chacko, T., Srivastava,R.K ., 2008. 1891–1883 Ma Southern Bastar–Cuddapah mafic igneous events, India: a newly recognized large igneous province. *Precambrian Research*, 160, pp308–322.
- Frost, C.D., Chamberlain, K.R., Frost, B.R., Scoates, J.S.S., 2000. The 1.76 Ga Horse Creek anorthosite complex, Wyoming: a massif anorthosite emplaced late in the Medicine Bow orogeny. *Rocky Mountain Geology* 35, 71–90.
- Frost BR, Barnes CG, Collins WJ, Arculus RJ, Ellis DJ, Frost CD (2001) A geochemical classification for granitic rocks. *J Petrol*42, pp2033–2048
- O'Connor, J. T. (1965). A classification for quartz-rich igneous rocks based on feldspar ratios. In: US Geological Survey Professional Paper B525. USGS, pp79–84.
- Streckeisen, A., 1967. Classification and nomenclature of igneous rocks. Final report of an inquiry. *Neues Jahrb. Mineral., Abh.*, 107: pp144--240.
- Pearce JA, Harris NBW, Tindle AG (1984) Trace element discrimination diagrams for the tectonic interpretation of granitic rocks.*J Petrol* 25 : pp956-983.
- Vil lasec.a. C & Roge:rs. G. 1 998. Cruslal origin of peraluminous' granitic hol it hs of Cefllral Spain:petrological, geochemical and 'istopic (Sr, Nd). 43, pp 55-79.